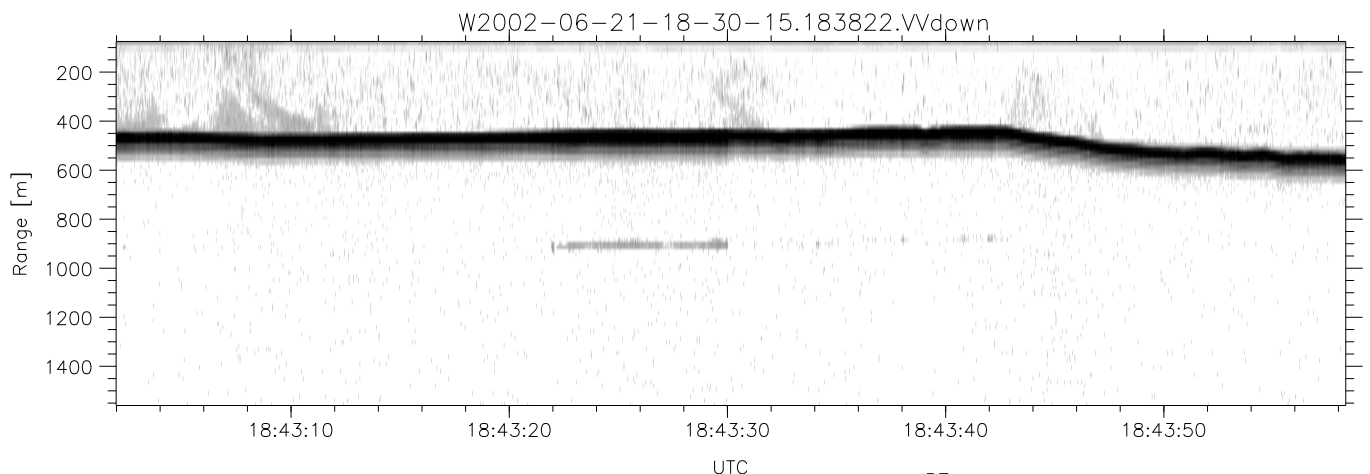
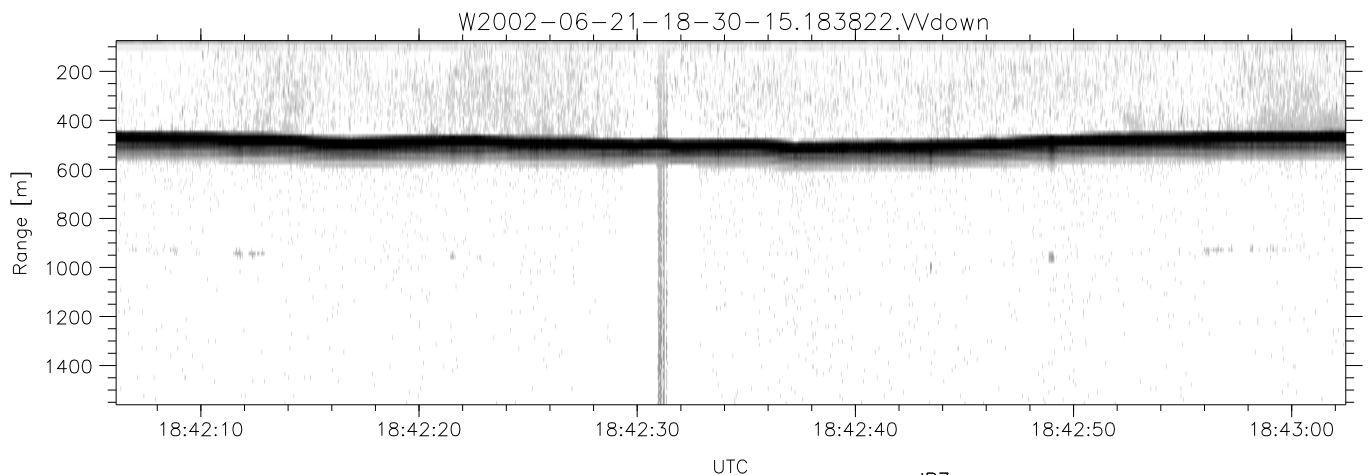
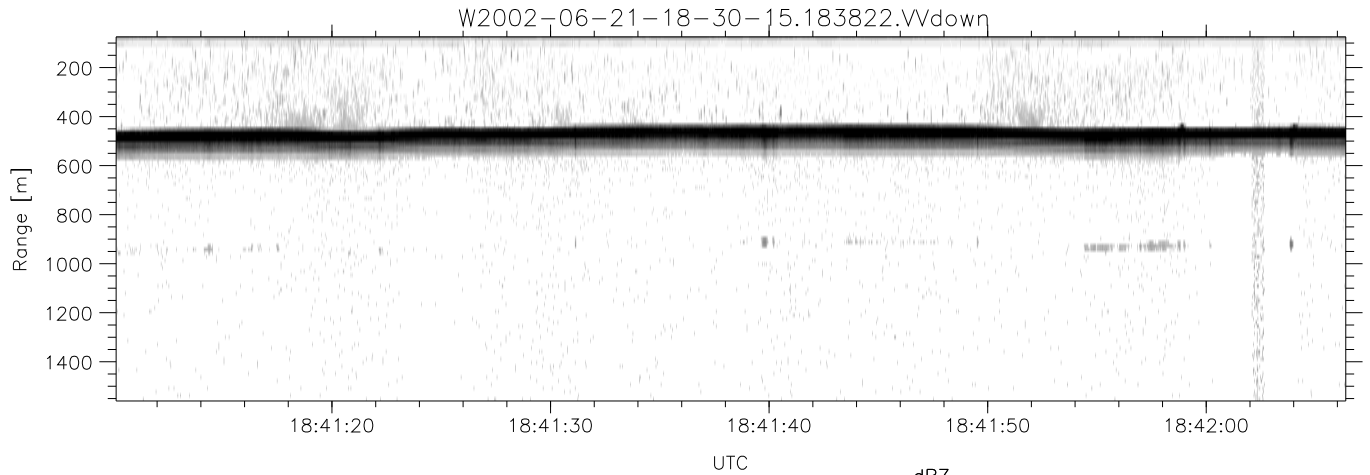


IHOP 2002 (dual-antenna config, modes 1,3,4,7) Data (cal: 49.0,50.0)

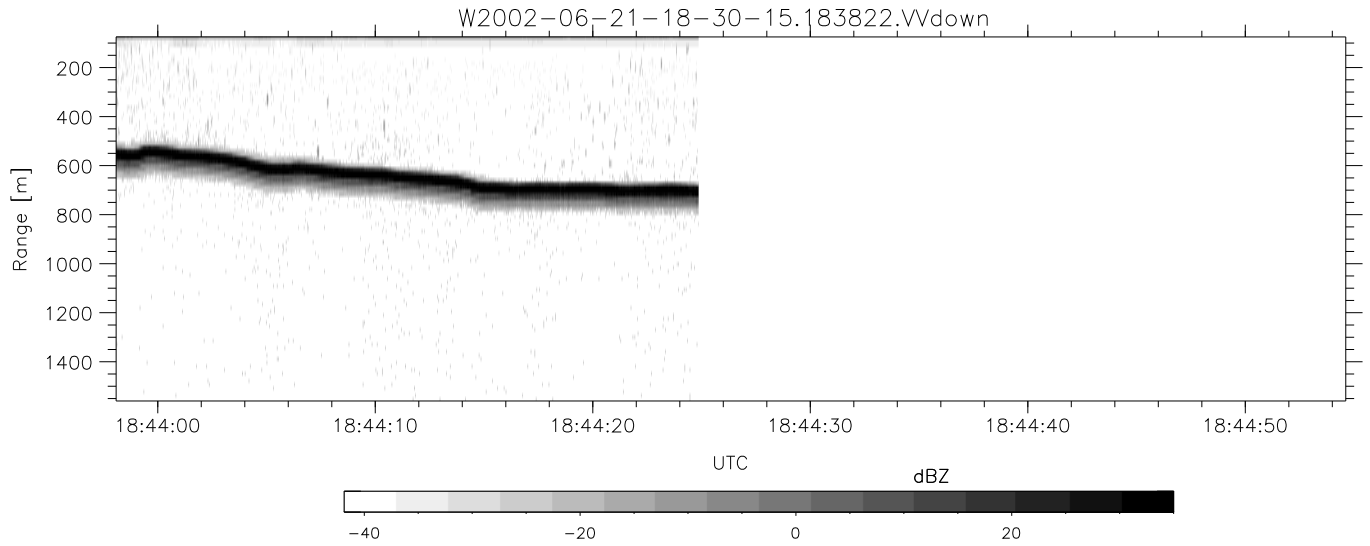
W2002-06-21-18-30-15 - PPMAG4	Min	Max	Mean	Std	Varc%	
IRIG:1,UTC: 18:30:01.77 to 18:44:24.85, Dur: 863s	hhN(dB)	-68.07	-62.60	-66.33	-75.81	11.3
TimeLngth: 863.07s, TimeInt: 29ms (34.1pps)	vvN(dB)	-67.76	-61.06	-65.61	-74.89	11.8
TimeCor=-13.0s, DSPDif(mn,min,mx):29,28,314	hhL(dB)	-10.57	-4.02	-6.48	-14.51	15.8
PPS(min,max,std): 25,36,2.20	vvL(dB)	-11.50	-2.49	-5.74	-11.00	29.7
Prof: 125 to 29556, NumProf(t/r): 29431/12362	ppN(m/s)	-12.80	12.47	-0.06	4.14	
ProcTime/Recs: 18:38:22-18:44:24/17069-29430	ppT(m/s)	-101.1	98.52	-0.45	32.69	
MxACQtime: 33ms; DRate: 190.9KB/s; Flags: 0, 0, 0	hh/vv(dB)	-NaN	46.29	-NaN	39.17	-166
Pulse: 275ns, IFilt: 5.0MHz; ppPol: HH HV VV	vh/hh(dB)	-38.85	-25.11	-32.44	-30.74	148.
TxPol: HHVV, PRF: 20 10 20 10 kHz	hv/vv(dB)	-NaN	-29.16	-54.18	-45.30	771.
Range: Delay 75m, Spacing 15m, Gates 100	hnjmp(dB)	-2.68	2.06	-0.09	-8.56	14.2
Ave. Pulses: 84, Rng/Prof Aspect@90m/s: 5.7	vnjmp(dB)	-2.26	2.19	-0.09	-8.57	14.2



IHOP 2002 (dual-antenna config, modes 1,3,4,7) Data (cal: 49.0,50.0)

W2002-06-21-18-30-15 - PPMAG4
 IRIG:1,UTC: 18:30:01.77 to 18:44:24.85, Dur: 863s
 TimeLngth: 863.07s, TimeInt: 29ms (34.1pps)
 TimeCor=-13.0s, DSPDif(mn,min,mx):29,28,314
 PPS(min,max,std): 25,36,2.20
 Prof: 125 to 29556, NumProf(t/r): 29431/12362
 ProcTime/Recs: 18:38:22-18:44:24/17069-29430
 MxACQtime: 33ms; DRate: 190.9KB/s; Flags: 0, 0, 0
 Pulse: 275ns, IFilt: 5.0MHz; ppPol: HH HV VV
 TxPol: HHVV, PRF: 20 10 20 10 kHz
 Range: Delay 75m, Spacing 15m, Gates 100
 Ave. Pulses: 84, Rng/Prof Aspect@90m/s: 5.7

	Min	Max	Mean	Std	Varc%
hhN(dB)	-68.07	-62.60	-66.33	-75.81	11.3
vvN(dB)	-67.76	-61.06	-65.61	-74.89	11.8
hhL(dB)	-10.57	-4.02	-6.48	-14.51	15.8
vvL(dB)	-11.50	-2.49	-5.74	-11.00	29.7
ppN(m/s)	-12.80	12.47	-0.06	4.14	
ppT(m/s)	-101.1	98.52	-0.45	32.69	
hh/vv(dB)	-NaN	46.29	-NaN	39.17	-166
vh/hh(dB)	-38.85	-25.11	-32.44	-30.74	148.
hv/vv(dB)	-NaN	-29.16	-54.18	-45.30	771.
hnjmp(dB)	-2.68	2.06	-0.09	-8.56	14.2
vnjmp(dB)	-2.26	2.19	-0.09	-8.57	14.2



IHOP 2002 (dual-antenna config, modes 1,3,4,7) Data (cal: 49.0,50.0)

W2002-06-21-18-30-15 - PPMAG4						
IRIG:1,UTC: 18:30:01.77 to 18:44:24.85, Dur: 863s	hhN(dB)	Min	Max	Mean	Std	Varc%
TimeLngth: 863.07s, TimeInt: 29ms (34.1pps)	vvN(dB)	-68.07	-62.60	-66.33	-75.81	11.3
TimeCor=-13.0s, DSPDif(mn,min,mx):29,28,314	hhL(dB)	-67.76	-61.06	-65.61	-74.89	11.8
PPS(min,max,std): 25,36,2.20	vvL(dB)	-10.57	-4.02	-6.48	-14.51	15.8
Prof: 125 to 29556, NumProf(t/r): 29431/12362	ppN(m/s)	-11.50	-2.49	-5.74	-11.00	29.7
ProcTime/Recs: 18:38:22-18:44:24/17069-29430	ppT(m/s)	-12.80	12.47	-0.06	4.14	
MxACQtime: 33ms; DRate: 190.9KB/s; Flags: 0, 0, 0	hh/vv(dB)	-101.1	98.52	-0.45	32.69	
Pulse: 275ns, IFilt: 5.0MHz; ppPol: HH HV VV	vh/vv(dB)	-NaN	46.29	-NaN	39.17	-166
TxPol: HHVV, PRF: 20 10 20 10 kHz	vh/hh(dB)	-38.85	-25.11	-32.44	-30.74	148.
Range: Delay 75m, Spacing 15m, Gates 100	hv/vv(dB)	-NaN	-29.16	-54.18	-45.30	771.
Ave. Pulses: 84, Rng/Prof Aspect@90m/s: 5.7	hn/jmp(dB)	-2.68	2.06	-0.09	-8.56	14.2
	vn/jmp(dB)	-2.26	2.19	-0.09	-8.57	14.2