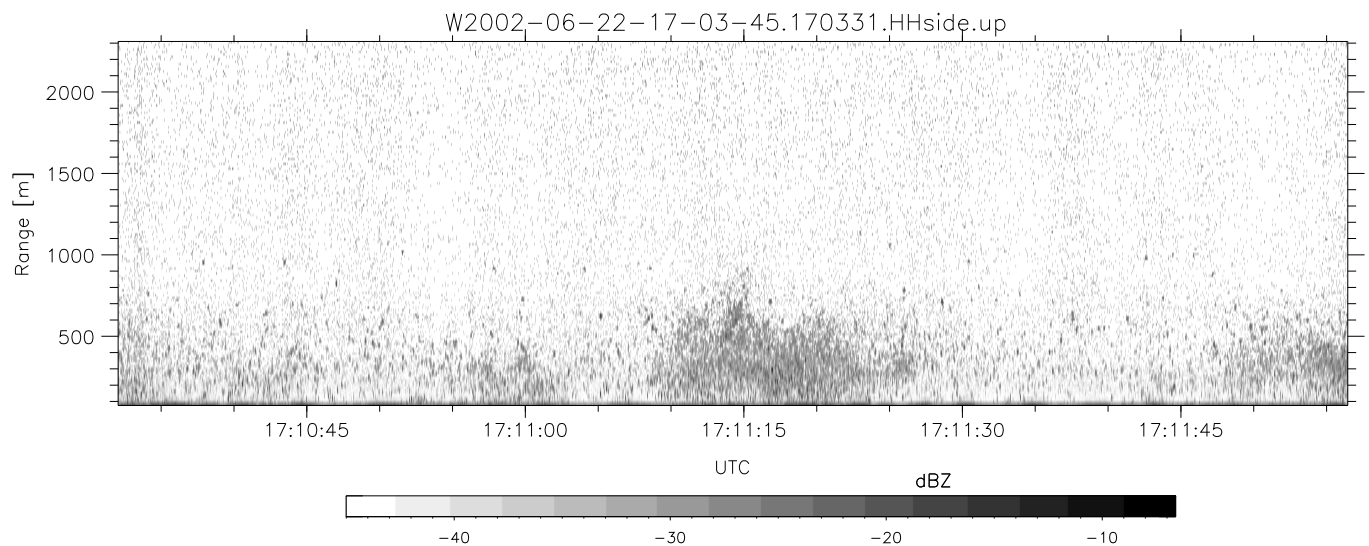
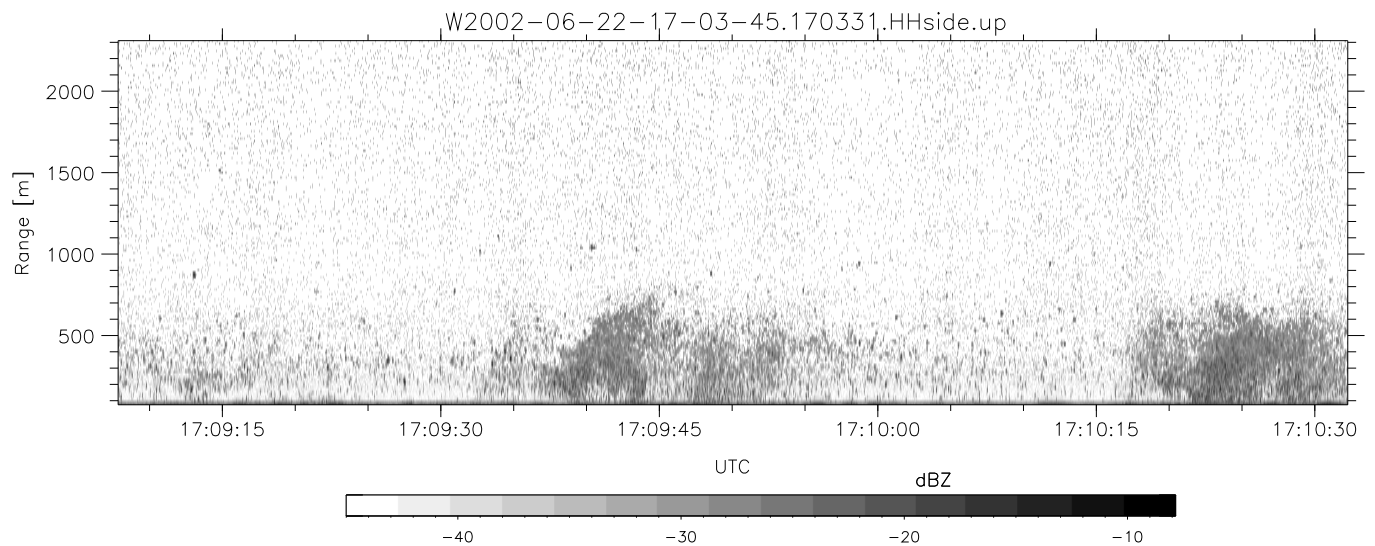
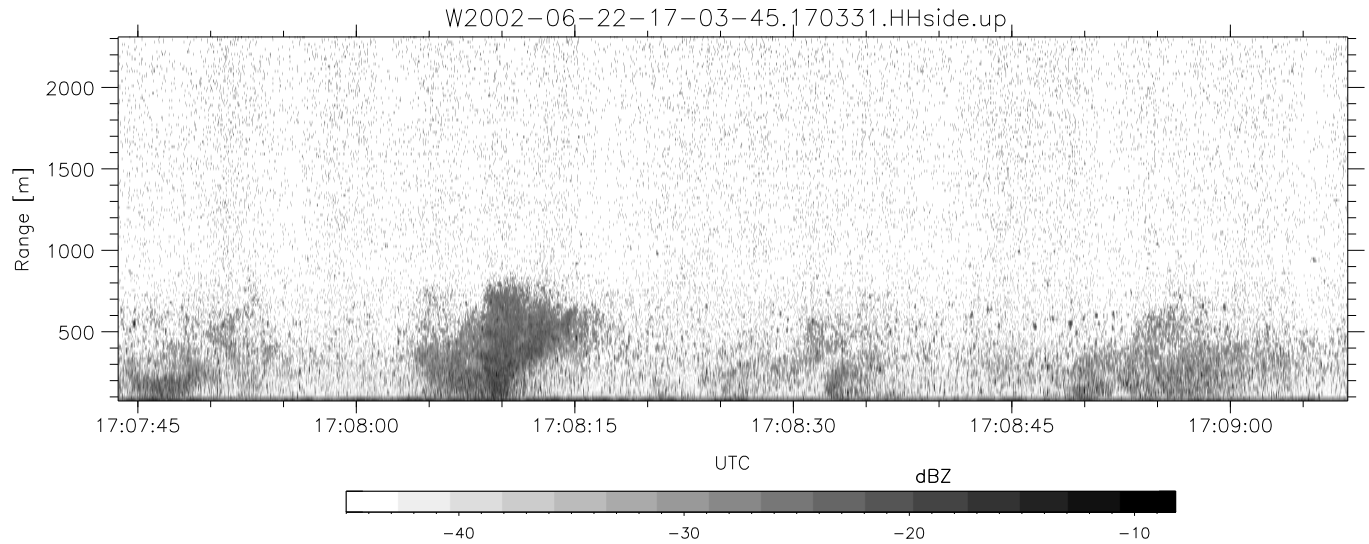


IHOP 2002 (dual-antenna config, modes 1,3,4,7) Data (cal: 49.0,50.0)

W2002-06-22-17-03-45 - SPPMAG
 IRIG:1,UTC: 17:03:31.10 to 17:29:53.31, Dur: 1582s
 TimeLngth: 1582.21s, TimeInt: 24ms (40.9pps)
 TimeCor=-13.0s, DSPDif(mn,min,mx):28,20,349
 PPS(min,max,std): 19,42,2.60
 Prof: 653 to 65427, NumProf(t/r): 64774/30122
 ProcTime/Recs: 17:03:31-17:15:46/0-30121
 MxACQtime: 17ms; DRate: 98.0KB/s; Flags: 0, 0, 0
 Pulse: 275ns, IFfilt: 5.0MHz; ppPol: HH
 TxPol: H, PRF: 20 kHz
 Range: Delay 75m, Spacing 15m, Gates 150
 Ave. Pulses: 348, Rng/Prof Aspect@90m/s: 6.8

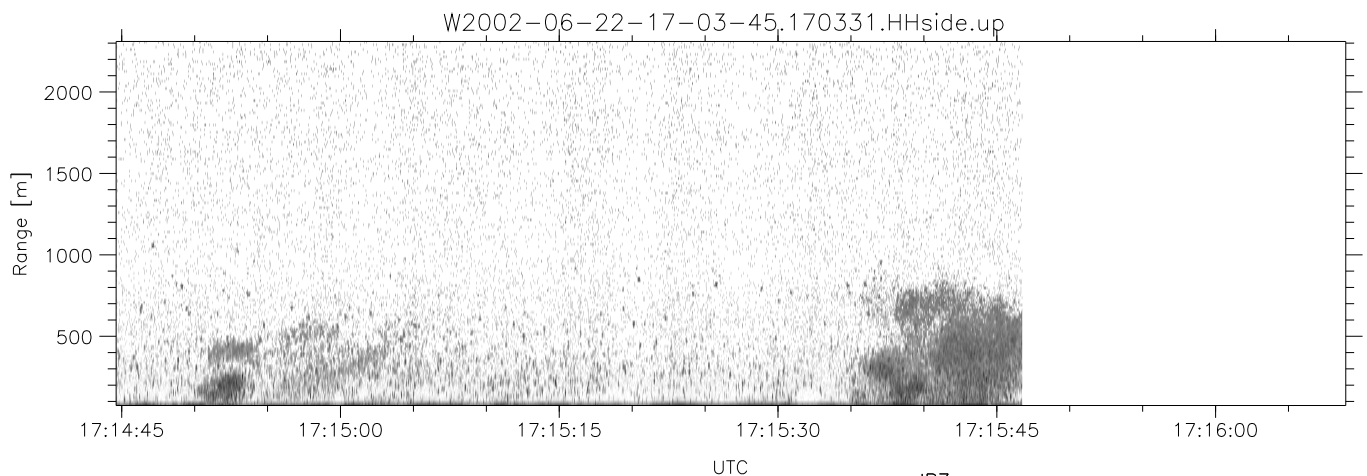
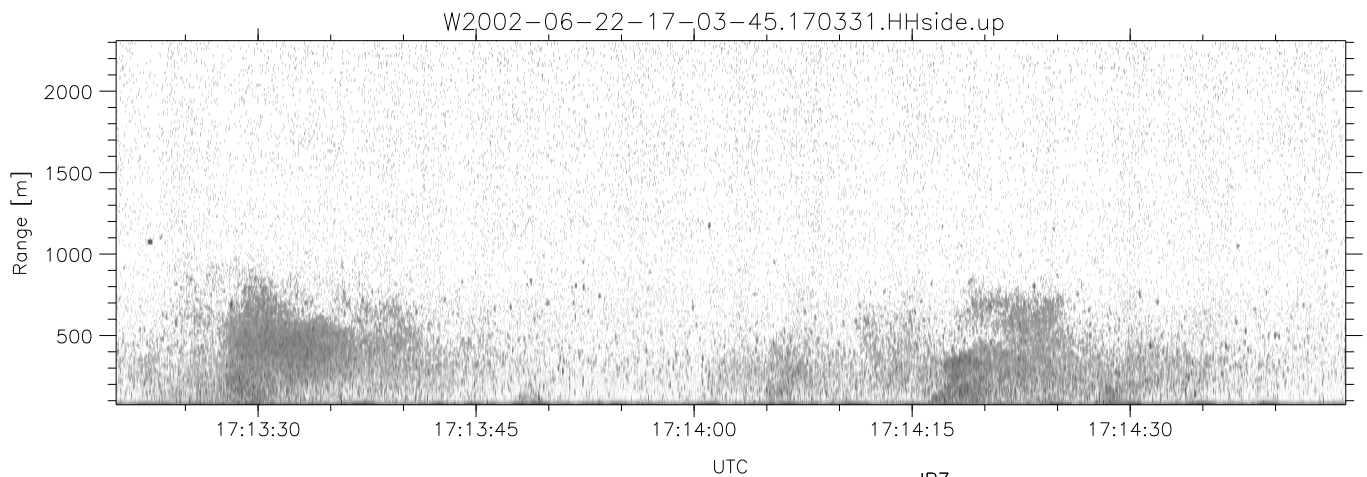
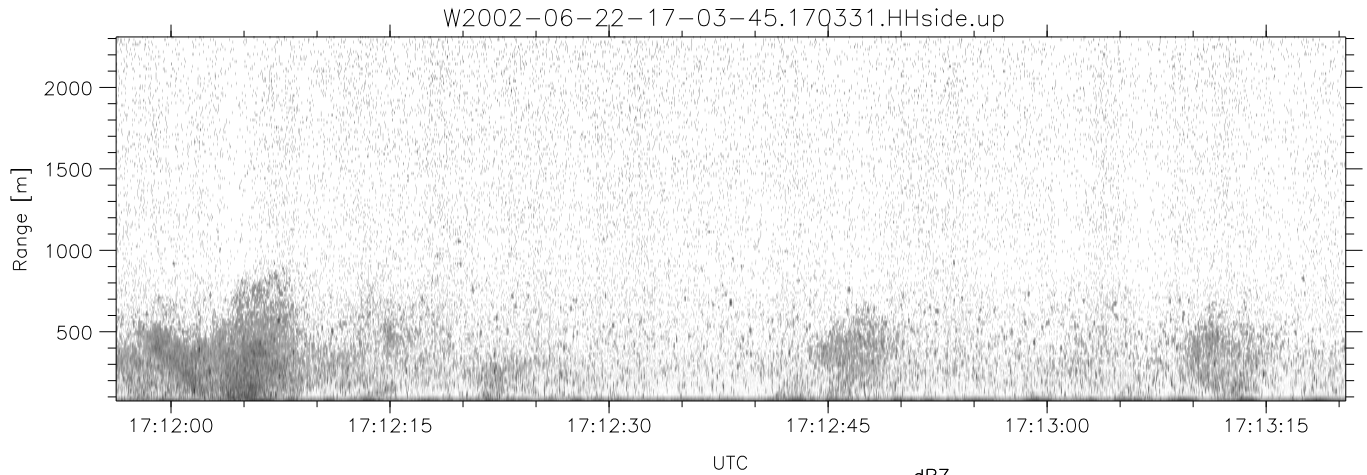
	Min	Max	Mean	Std	Varc%
hhN(dB)	-66.36	-64.59	-65.43	-78.41	5.0
vvN(dB)	-65.43	-63.32	-64.49	-77.39	5.1
hhL(dB)	-14.91	-0.30	-6.49	-8.25	66.6
vhL(dB)	-22.64	-1.84	-7.51	-9.03	70.5
ppN(m/s)	-15.80	15.80	-0.01	9.03	
ppT(m/s)	-0.06	0.05	-0.00	0.01	
vh/hh(dB)	-NaN	-21.95	-28.98	-27.33	146.
hnjmp(dB)	-0.98	1.17	0.15	-11.57	6.7
vnjmp(dB)	-1.04	1.42	0.13	-11.54	6.8



IHOP 2002 (dual-antenna config, modes 1,3,4,7) Data (cal: 49.0,50.0)

W2002-06-22-17-03-45 - SPPMAG
 IRIG:1,UTC: 17:03:31.10 to 17:29:53.31, Dur: 1582s
 TimeLngth: 1582.21s, TimeInt: 24ms (40.9pps)
 TimeCor=-13.0s, DSPDif(mn,min,mx):28,20,349
 PPS(min,max,std): 19,42,2.60
 Prof: 653 to 65427, NumProf(t/r): 64774/30122
 ProcTime/Recs: 17:03:31-17:15:46/0-30121
 MxACQtime: 17ms; DRate: 98.0KB/s; Flags: 0, 0, 0
 Pulse: 275ns, IFfilt: 5.0MHz; ppPol: HH
 TxPol: H, PRF: 20 kHz
 Range: Delay 75m, Spacing 15m, Gates 150
 Ave. Pulses: 348, Rng/Prof Aspect@90m/s: 6.8

	Min	Max	Mean	Std	Varc%
hhN(dB)	-66.36	-64.59	-65.43	-78.41	5.0
vvN(dB)	-65.43	-63.32	-64.49	-77.39	5.1
hhL(dB)	-14.91	-0.30	-6.49	-8.25	66.6
vhL(dB)	-22.64	-1.84	-7.51	-9.03	70.5
ppN(m/s)	-15.80	15.80	-0.01	9.03	
ppT(m/s)	-0.06	0.05	-0.00	0.01	
vh/hh(dB)	-NaN	-21.95	-28.98	-27.33	146.
hnjmp(dB)	-0.98	1.17	0.15	-11.57	6.7
vnjmp(dB)	-1.04	1.42	0.13	-11.54	6.8



IHOP 2002 (dual-antenna config, modes 1,3,4,7) Data (cal: 49.0,50.0)

W2002-06-22-17-03-45 - SPPMAG
 IRIG:1,UTC: 17:03:31.10 to 17:29:53.31, Dur: 1582s
 TimeLngth: 1582.21s, TimeInt: 24ms (40.9pps)
 TimeCor=-13.0s, DSPDif(mn,min,mx):28,20,349
 PPS(min,max,std): 19,42,2.60
 Prof: 653 to 65427, NumProf(t/r): 64774/30122
 ProcTime/Recs: 17:03:31-17:15:46/0-30121
 MxACQtime: 17ms; DRate: 98.0KB/s; Flags: 0, 0, 0
 Pulse: 275ns, IFfilt: 5.0MHz; ppPol: HH
 TxPol: H, PRF: 20 kHz
 Range: Delay 75m, Spacing 15m, Gates 150
 Ave. Pulses: 348, Rng/Prof Aspect@90m/s: 6.8

	Min	Max	Mean	Std	Varc%
hhN (dB)	-66.36	-64.59	-65.43	-78.41	5.0
vvN (dB)	-65.43	-63.32	-64.49	-77.39	5.1
hhL (dB)	-14.91	-0.30	-6.49	-8.25	66.6
vhL (dB)	-22.64	-1.84	-7.51	-9.03	70.5
ppN (m/s)	-15.80	15.80	-0.01	9.03	
ppT (m/s)	-0.06	0.05	-0.00	0.01	
vh/hh (dB)	-NaN	-21.95	-28.98	-27.33	146.
hn_jmp (dB)	-0.98	1.17	0.15	-11.57	6.7
vn_jmp (dB)	-1.04	1.42	0.13	-11.54	6.8