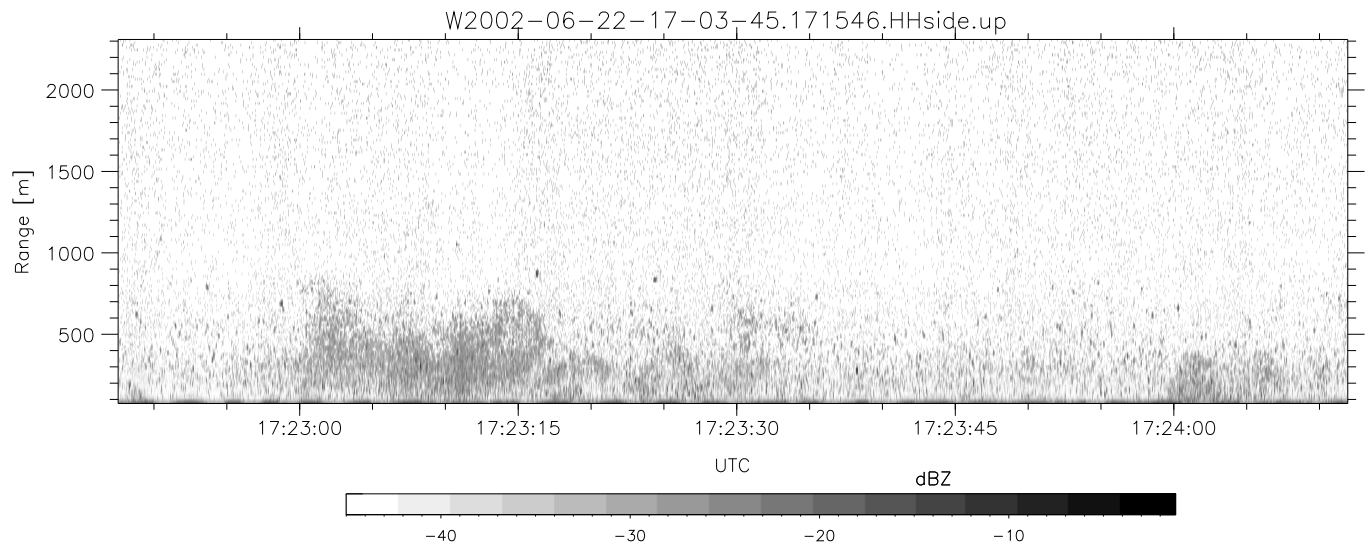
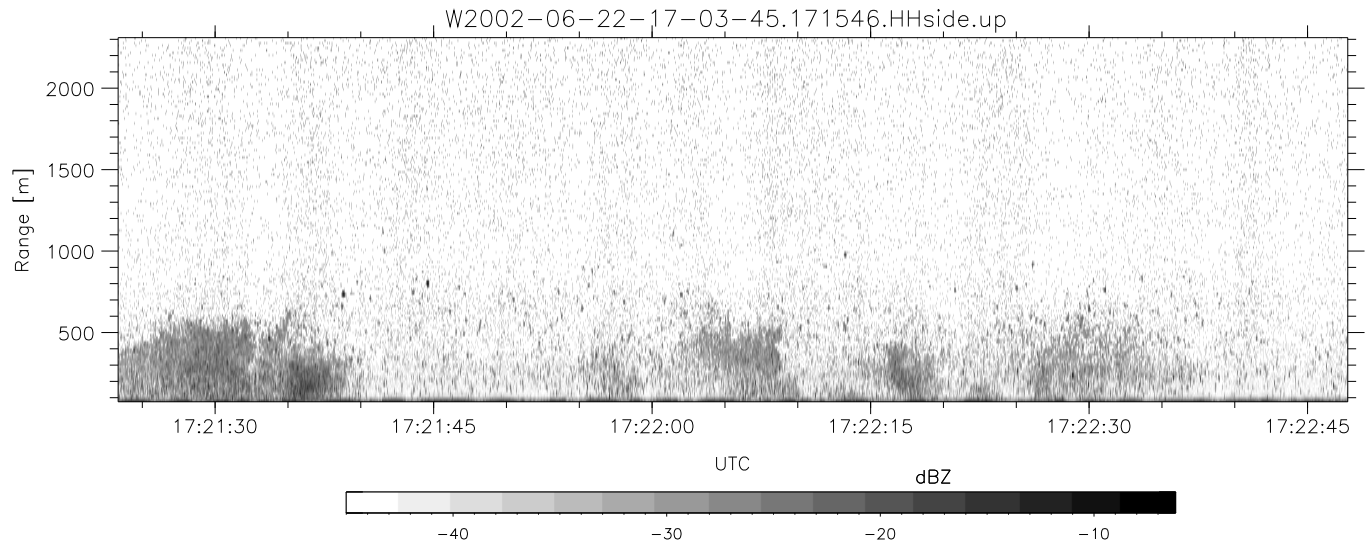
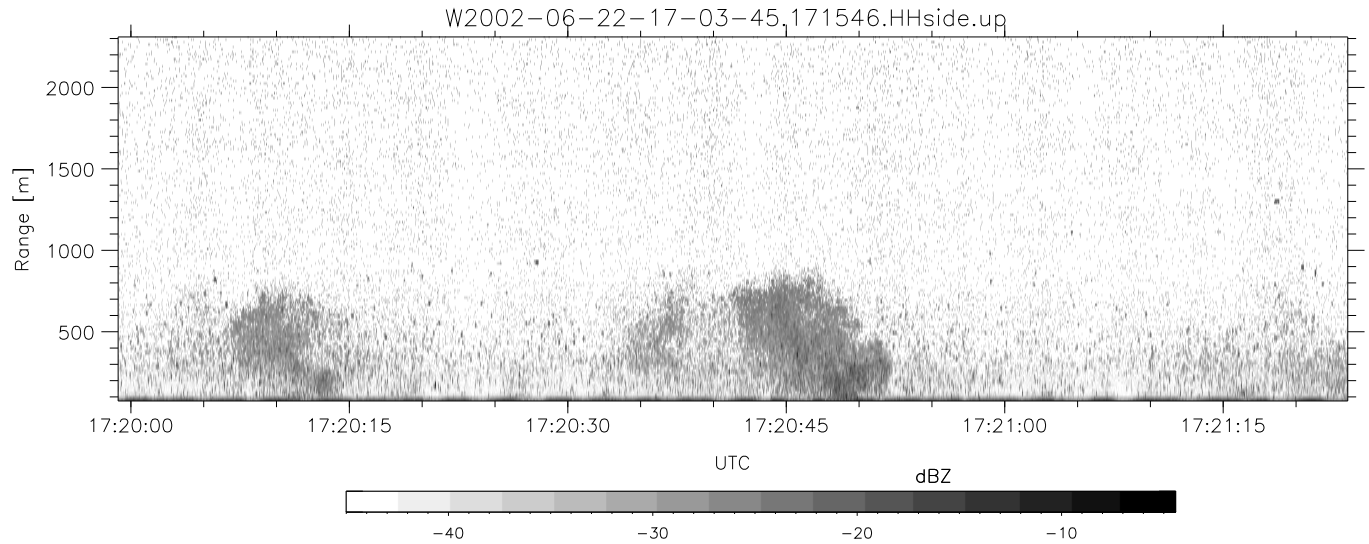


IHOP 2002 (dual-antenna config, modes 1,3,4,7) Data (cal: 49.0,50.0)

W2002-06-22-17-03-45 - SPPMAG  
IRIG:1,UTC: 17:03:31.10 to 17:29:53.31, Dur: 1582s  
TimeLngth: 1582.21s, TimeInt: 24ms (40.9pps)  
TimeCor=-13.0s, DSPDif(mn,min,mx):28,20,286  
PPS(min,max,std): 31,42,2.56  
Prof: 653 to 65427, NumProf(t/r): 64774/30122  
ProcTime/Recs: 17:15:46-17:28:02/30122-60243  
MxACQtime: 17ms; DRate: 98.0KB/s; Flags: 0, 0, 0  
Pulse: 275ns, IFfilt: 5.0MHz; ppPol: HH  
TxPol: H, PRF: 20 kHz  
Range: Delay 75m, Spacing 15m, Gates 150  
Ave. Pulses: 348, Rng/Prof Aspect@90m/s: 6.8

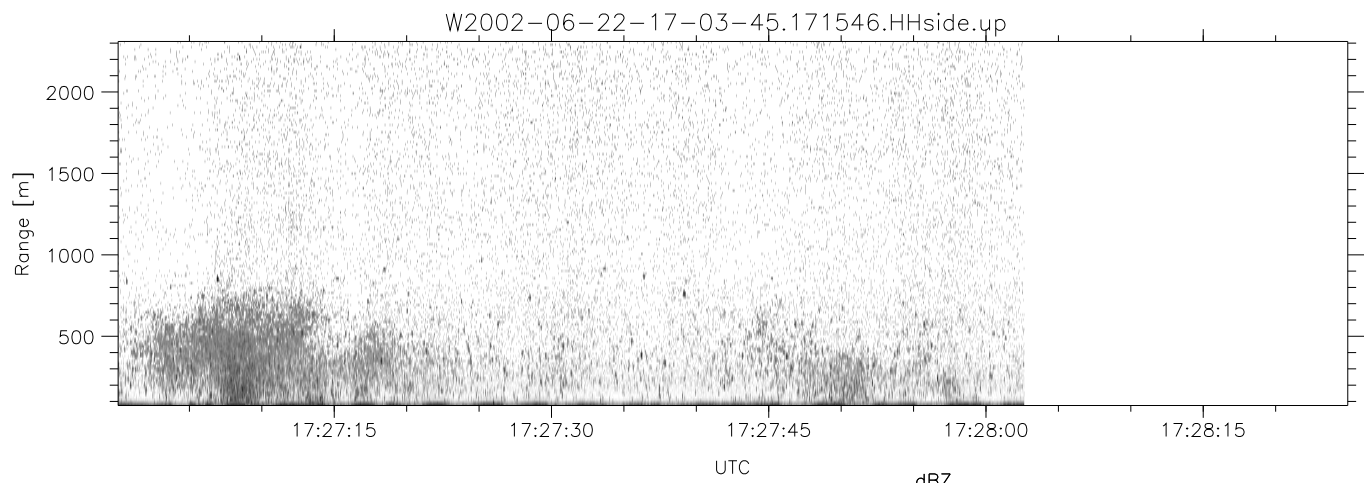
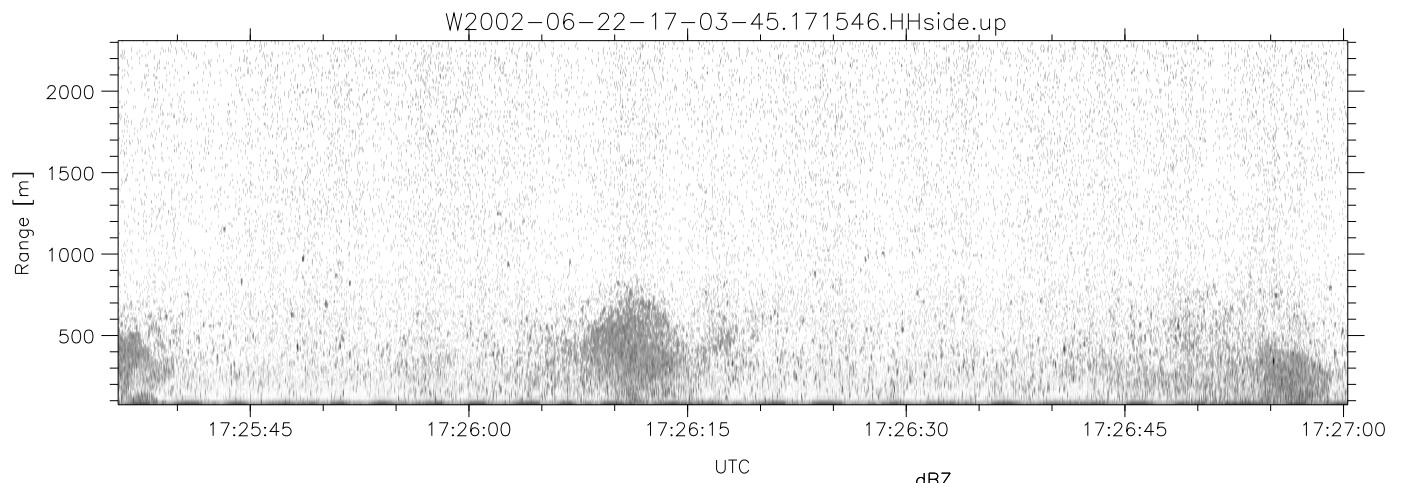
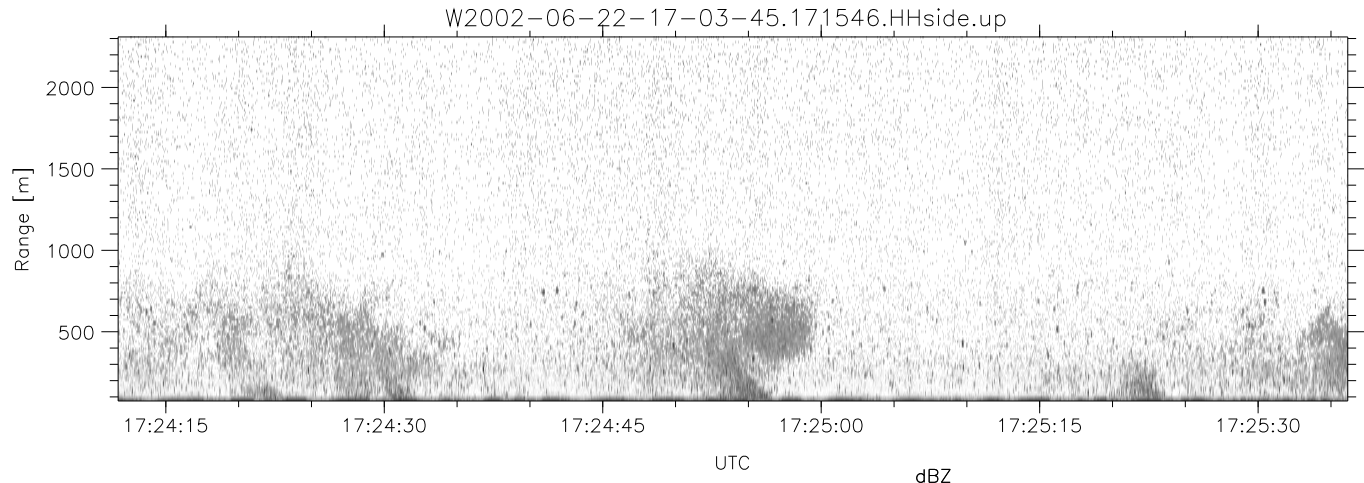
	Min	Max	Mean	Std	Varc%
hhN(dB)	-66.45	-64.69	-65.49	-78.43	5.1
vvN(dB)	-65.32	-63.60	-64.47	-77.46	5.0
hhL(dB)	-17.81	-2.90	-7.50	-9.23	67.1
vhL(dB)	-18.79	-3.81	-7.92	-11.72	41.8
ppN(m/s)	-15.80	15.80	-0.04	9.02	
ppT(m/s)	-0.10	0.06	-0.00	0.01	
vh/hh(dB)	-55.52	-23.81	-30.59	-30.15	110.
hn_jmp(dB)	-0.90	1.33	0.15	-11.58	6.7
vn_jmp(dB)	-1.04	1.27	0.13	-11.50	6.9



IHOP 2002 (dual-antenna config, modes 1,3,4,7) Data (cal: 49.0,50.0)

W2002-06-22-17-03-45 - SPPMAG  
 IRIG:1,UTC: 17:03:31.10 to 17:29:53.31, Dur: 1582s  
 TimeLngth: 1582.21s, TimeInt: 24ms (40.9pps)  
 TimeCor=-13.0s, DSPDif(mn,min,mx):28,20,286  
 PPS(min,max,std): 31,42,2.56  
 Prof: 653 to 65427, NumProf(t/r): 64774/30122  
 ProcTime/Recs: 17:15:46-17:28:02/30122-60243  
 MxACQtime: 17ms; DRate: 98.0KB/s; Flags: 0, 0, 0  
 Pulse: 275ns, IFfilt: 5.0MHz; ppPol: HH  
 TxPol: H, PRF: 20 kHz  
 Range: Delay 75m, Spacing 15m, Gates 150  
 Ave. Pulses: 348, Rng/Prof Aspect@90m/s: 6.8

	Min	Max	Mean	Std	Varc%
hhN(dB)	-66.45	-64.69	-65.49	-78.43	5.1
vvN(dB)	-65.32	-63.60	-64.47	-77.46	5.0
hhL(dB)	-17.81	-2.90	-7.50	-9.23	67.1
vhL(dB)	-18.79	-3.81	-7.92	-11.72	41.8
ppN(m/s)	-15.80	15.80	-0.04	9.02	
ppT(m/s)	-0.10	0.06	-0.00	0.01	
vh/hh(dB)	-55.52	-23.81	-30.59	-30.15	110.
hnjmp(dB)	-0.90	1.33	0.15	-11.58	6.7
vnjmp(dB)	-1.04	1.27	0.13	-11.50	6.9



IHOP 2002 (dual-antenna config, modes 1,3,4,7) Data (cal: 49.0,50.0)

W2002-06-22-17-03-45 - SPPMAG  
 IRIG:1,UTC: 17:03:31.10 to 17:29:53.31, Dur: 1582s  
 TimeLngth: 1582.21s, TimeInt: 24ms (40.9pps)  
 TimeCor=-13.0s, DSPDif(mn,min,mx):28,20,286  
 PPS(min,max,std): 31,42,2.56  
 Prof: 653 to 65427, NumProf(t/r): 64774/30122  
 ProcTime/Recs: 17:15:46-17:28:02/30122-60243  
 MxACQtime: 17ms; DRate: 98.0KB/s; Flags: 0, 0, 0  
 Pulse: 275ns, IFfilt: 5.0MHz; ppPol: HH  
 TxPol: H, PRF: 20 kHz  
 Range: Delay 75m, Spacing 15m, Gates 150  
 Ave. Pulses: 348, Rng/Prof Aspect@90m/s: 6.8

	Min	Max	Mean	Std	Varc%
hhN(dB)	-66.45	-64.69	-65.49	-78.43	5.1
vvN(dB)	-65.32	-63.60	-64.47	-77.46	5.0
hhL(dB)	-17.81	-2.90	-7.50	-9.23	67.1
vhL(dB)	-18.79	-3.81	-7.92	-11.72	41.8
ppN(m/s)	-15.80	15.80	-0.04	9.02	
ppT(m/s)	-0.10	0.06	-0.00	0.01	
vh/hh(dB)	-55.52	-23.81	-30.59	-30.15	110.
hnjmp(dB)	-0.90	1.33	0.15	-11.58	6.7
vnjmp(dB)	-1.04	1.27	0.13	-11.50	6.9