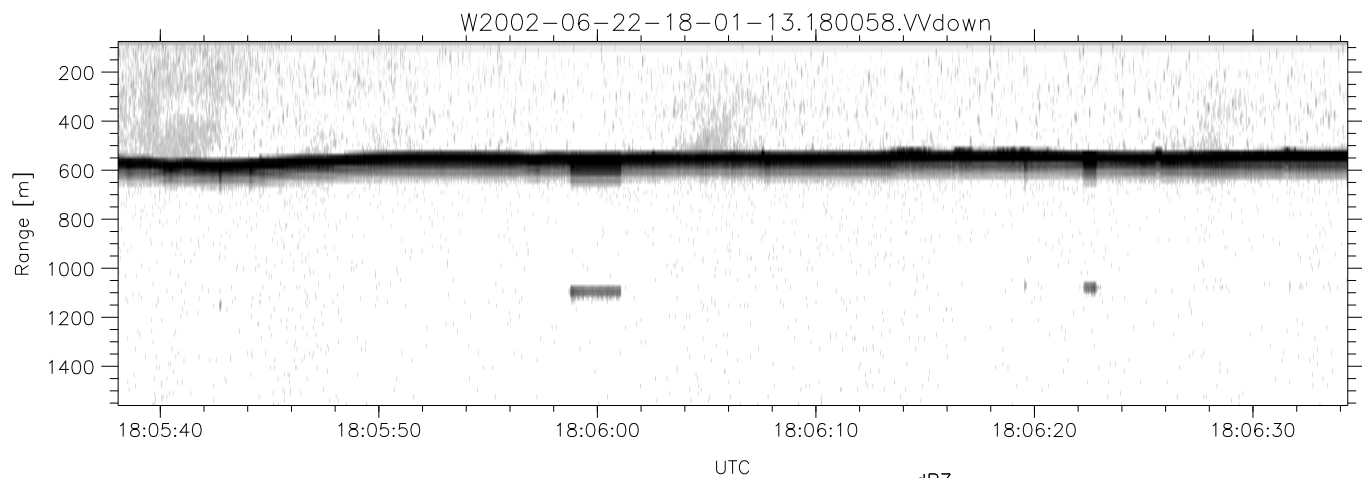
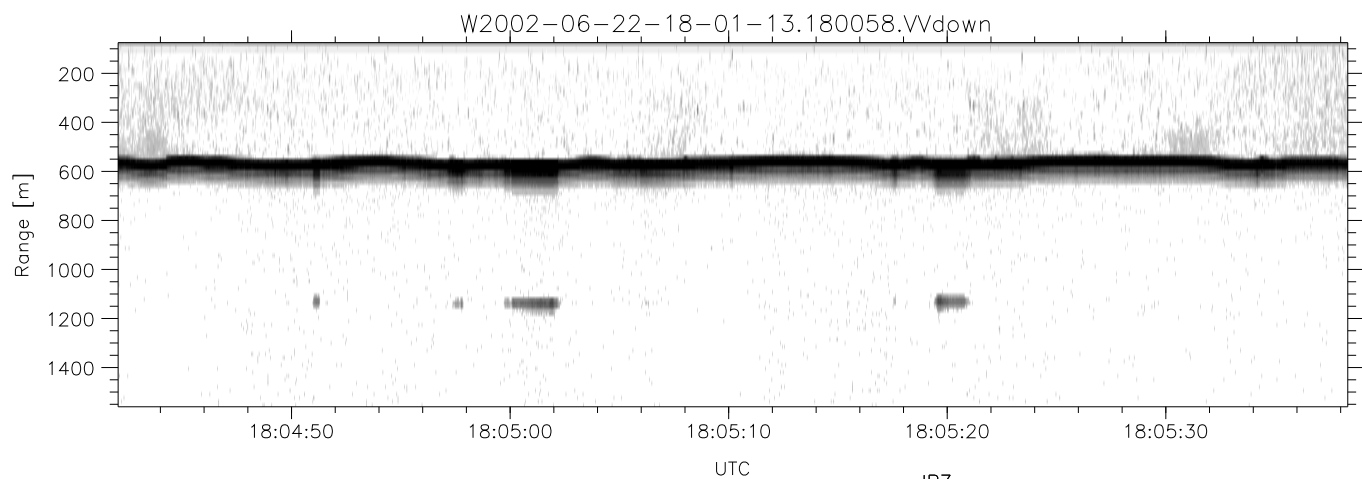
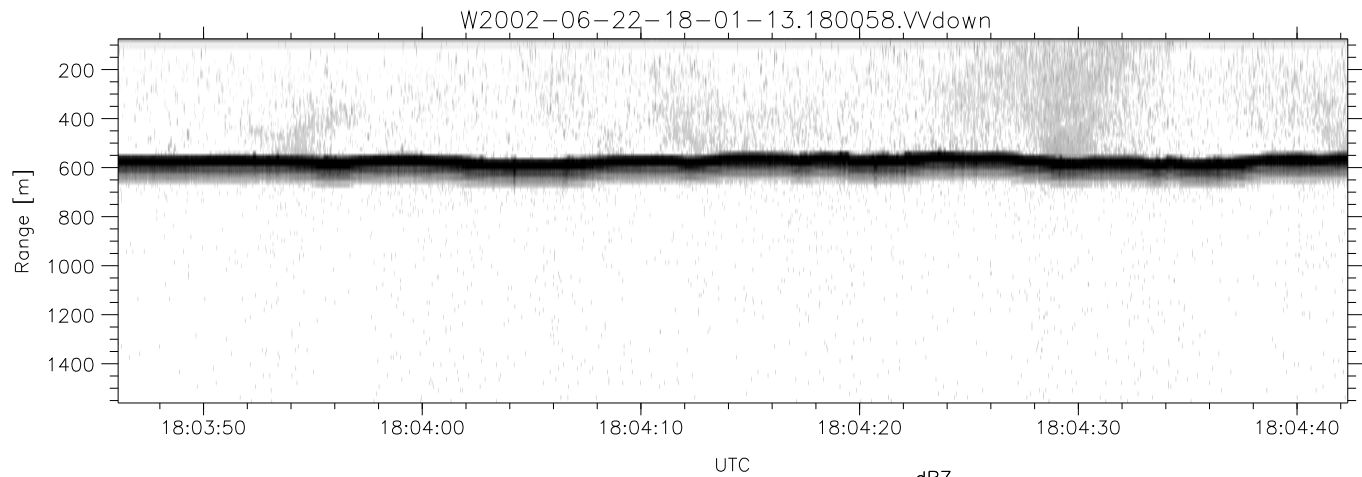


IHOP 2002 (dual-antenna config, modes 1,3,4,7) Data (cal: 49.0,50.0)

W2002-06-22-18-01-13 - PPMAG4  
 IRIG:1,UTC: 18:00:58.59 to 18:13:50.21, Dur: 772s  
 TimeLngth: 771.62s, TimeInt: 28ms (34.6pps)  
 TimeCor=-13.0s, DSPDif(mn,min,mx):28,28,320  
 PPS(min,max,std): 25,36,2.18  
 Prof: 364 to 27071, NumProf(t/r): 26707/17069  
 ProcTime/Recs: 18:00:58-18:09:11/0-17068  
 MxACQtime: 33ms; DRate: 193.7KB/s; Flags: 0, 0, 0  
 Pulse: 275ns, IFfilt: 5.0MHz; ppPol: HH HV VV  
 TxPol: HHVV, PRF: 20 10 20 10 kHz  
 Range: Delay 75m, Spacing 15m, Gates 100  
 Ave. Pulses: 84, Rng/Prof Aspect@90m/s: 5.8

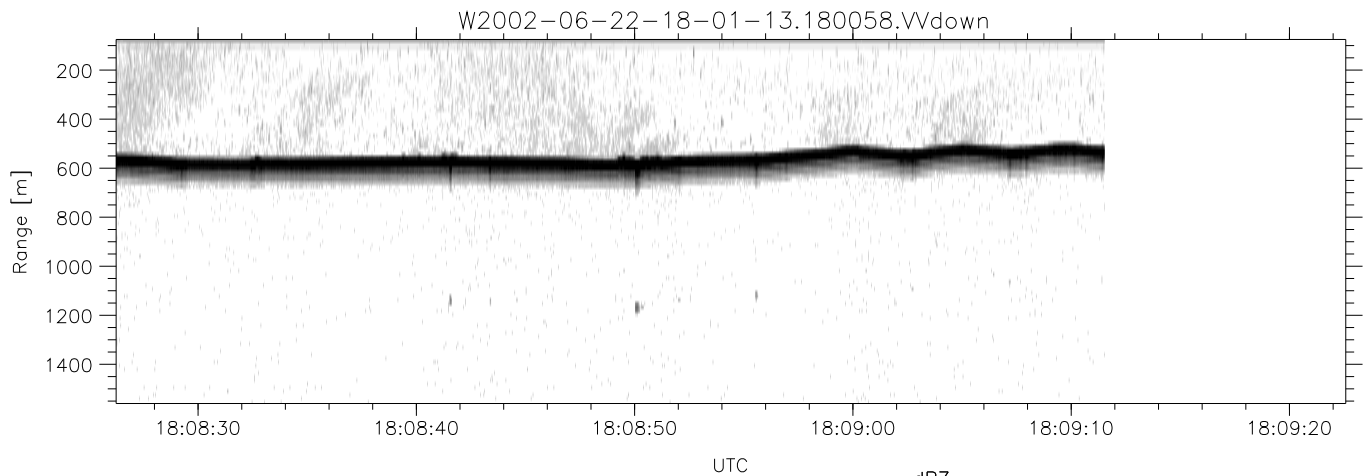
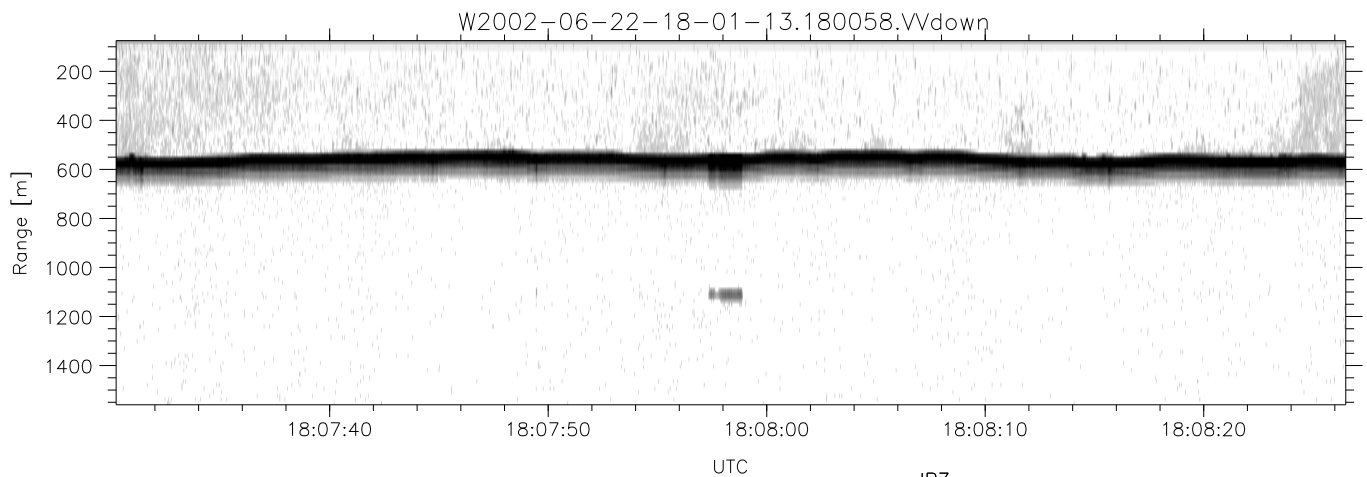
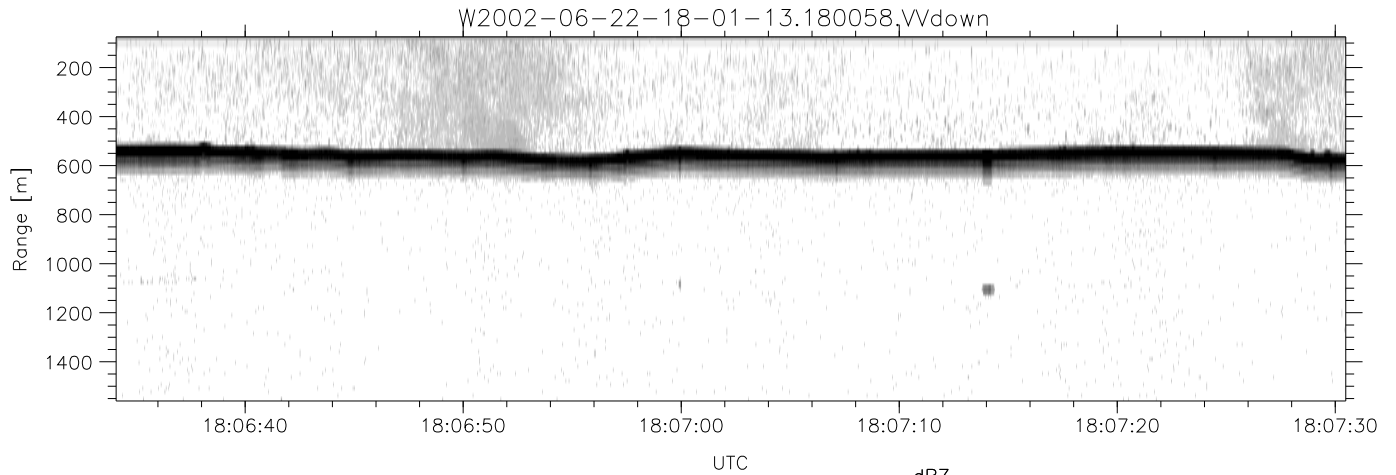
	Min	Max	Mean	Std	Varc%
hhN(dB)	-67.60	-64.28	-65.85	-75.90	9.9
vvN(dB)	-66.91	-63.20	-64.72	-74.73	10.0
hhL(dB)	-8.36	-3.90	-5.80	-15.57	10.5
vvL(dB)	-6.66	-1.62	-4.44	-12.95	14.1
ppN(m/s)	-12.59	12.58	-0.04	4.14	
ppT(m/s)	-99.44	99.34	-0.33	32.70	
hh/vv(dB)	-NaN	50.28	16.93	32.09	3277
vh/hh(dB)	-41.36	-34.07	-37.13	-37.61	89.5
hv/vv(dB)	-NaN	-34.49	-53.71	-45.78	621.
hnjmp(dB)	-2.63	1.97	-0.08	-8.65	13.9
vnjmp(dB)	-2.20	2.25	-0.09	-8.59	14.1



IHOP 2002 (dual-antenna config, modes 1,3,4,7) Data (cal: 49.0,50.0)

W2002-06-22-18-01-13 - PPMAG4  
 IRIG:1,UTC: 18:00:58.59 to 18:13:50.21, Dur: 772s  
 TimeLngth: 771.62s, TimeInt: 28ms (34.6pps)  
 TimeCor=-13.0s, DSPDif(mn,min,mx):28,28,320  
 PPS(min,max,std): 25,36,2.18  
 Prof: 364 to 27071, NumProf(t/r): 26707/17069  
 ProcTime/Recs: 18:00:58-18:09:11/0-17068  
 MxACQtime: 33ms; DRate: 193.7KB/s; Flags: 0, 0, 0  
 Pulse: 275ns, IFfilt: 5.0MHz; ppPol: HH HV VV  
 TxPol: HHVV, PRF: 20 10 20 10 kHz  
 Range: Delay 75m, Spacing 15m, Gates 100  
 Ave. Pulses: 84, Rng/Prof Aspect@90m/s: 5.8

	Min	Max	Mean	Std	Varc%
hhN(dB)	-67.60	-64.28	-65.85	-75.90	9.9
vvN(dB)	-66.91	-63.20	-64.72	-74.73	10.0
hhL(dB)	-8.36	-3.90	-5.80	-15.57	10.5
vvL(dB)	-6.66	-1.62	-4.44	-12.95	14.1
ppN(m/s)	-12.59	12.58	-0.04	4.14	
ppT(m/s)	-99.44	99.34	-0.33	32.70	
hh/vv(dB)	-NaN	50.28	16.93	32.09	3277
vh/hh(dB)	-41.36	-34.07	-37.13	-37.61	89.5
hv/vv(dB)	-NaN	-34.49	-53.71	-45.78	621.
hnjmp(dB)	-2.63	1.97	-0.08	-8.65	13.9
vnjmp(dB)	-2.20	2.25	-0.09	-8.59	14.1



IHOP 2002 (dual-antenna config, modes 1,3,4,7) Data (cal: 49.0,50.0)

W2002-06-22-18-01-13 - PPMAG4  
 IRIG:1,UTC: 18:00:58.59 to 18:13:50.21, Dur: 772s  
 TimeLngth: 771.62s, TimeInt: 28ms (34.6pps)  
 TimeCor=-13.0s, DSPDif(mn,min,mx):28,28,320  
 PPS(min,max,std): 25,36,2.18  
 Prof: 364 to 27071, NumProf(t/r): 26707/17069  
 ProcTime/Recs: 18:00:58-18:09:11/0-17068  
 MxAcQtime: 33ms; DRate: 193.7KB/s; Flags: 0, 0, 0  
 Pulse: 275ns, IFfilt: 5.0MHz; ppPol: HH HV VV  
 TxPol: HHVV, PRF: 20 10 20 10 kHz  
 Range: Delay 75m, Spacing 15m, Gates 100  
 Ave. Pulses: 84, Rng/Prof Aspect@90m/s: 5.8

	Min	Max	Mean	Std	Varc%
hhN(dB)	-67.60	-64.28	-65.85	-75.90	9.9
vvN(dB)	-66.91	-63.20	-64.72	-74.73	10.0
hhL(dB)	-8.36	-3.90	-5.80	-15.57	10.5
vvL(dB)	-6.66	-1.62	-4.44	-12.95	14.1
ppN(m/s)	-12.59	12.58	-0.04	4.14	
ppT(m/s)	-99.44	99.34	-0.33	32.70	
hh/vv(dB)	-NaN	50.28	16.93	32.09	3277
vh/hh(dB)	-41.36	-34.07	-37.13	-37.61	89.5
hv/vv(dB)	-NaN	-34.49	-53.71	-45.78	621.
hnjmp(dB)	-2.63	1.97	-0.08	-8.65	13.9
vnjmp(dB)	-2.20	2.25	-0.09	-8.59	14.1