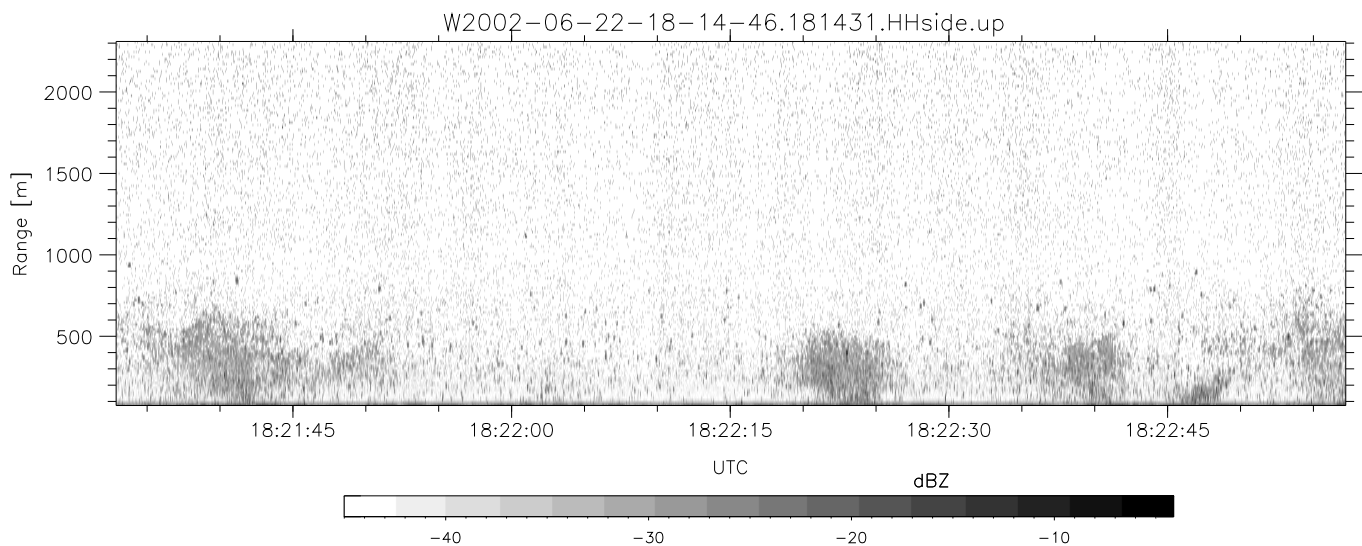
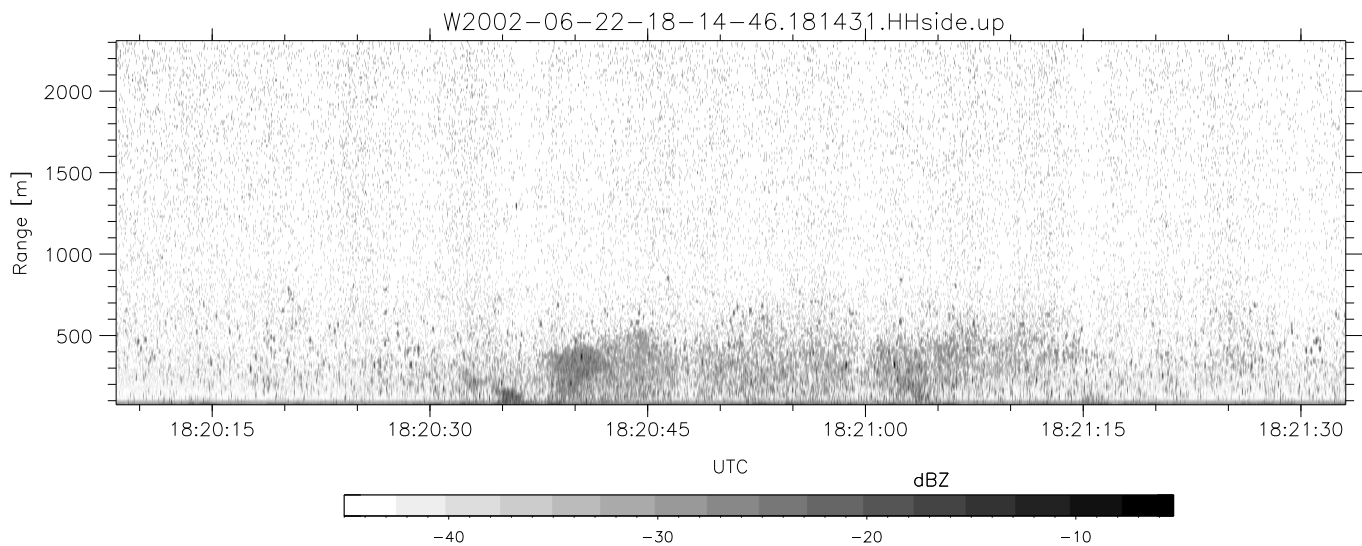
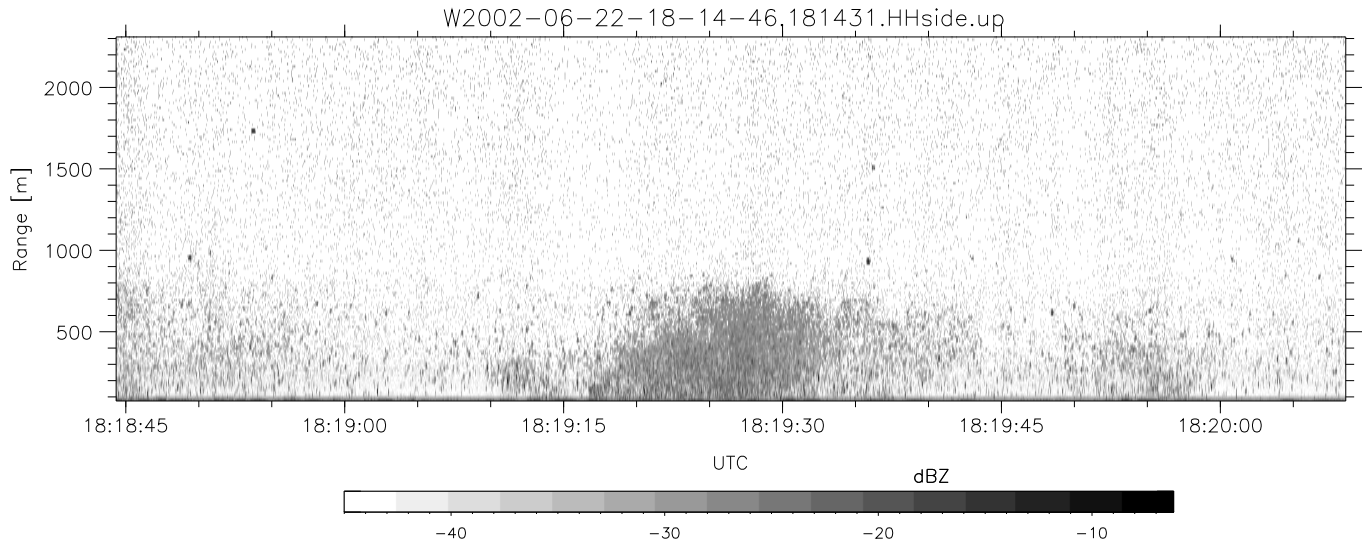


IHOP 2002 (dual-antenna config, modes 1,3,4,7) Data (cal: 49.0,50.0)

W2002-06-22-18-14-46 - SPPMAG
 IRIG:1,UTC: 18:14:31.98 to 18:28:14.46, Dur: 823s
 TimeLngth: 822.48s, TimeInt: 24ms (40.9pps)
 TimeCor=-13.0s, DSPDif(mn,min,mx):22,20,322
 PPS(min,max,std): 21,42,2.74
 Prof: 188 to 33823, NumProf(t/r): 33635/30122
 ProcTime/Recs: 18:14:31-18:26:48/0-30121
 MxACQtime: 17ms; DRate: 97.9KB/s; Flags: 0, 0, 0
 Pulse: 275ns, IFfilt: 5.0MHz; ppPol: HH
 TxPol: H, PRF: 20 kHz
 Range: Delay 75m, Spacing 15m, Gates 150
 Ave. Pulses: 348, Rng/Prof Aspect@90m/s: 6.8

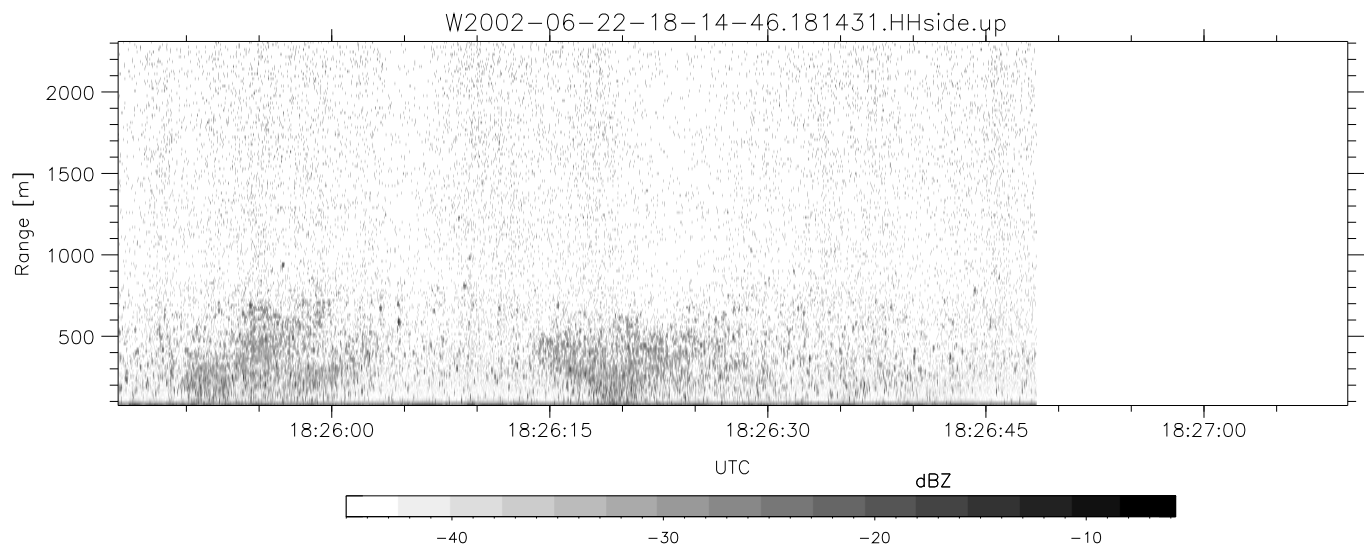
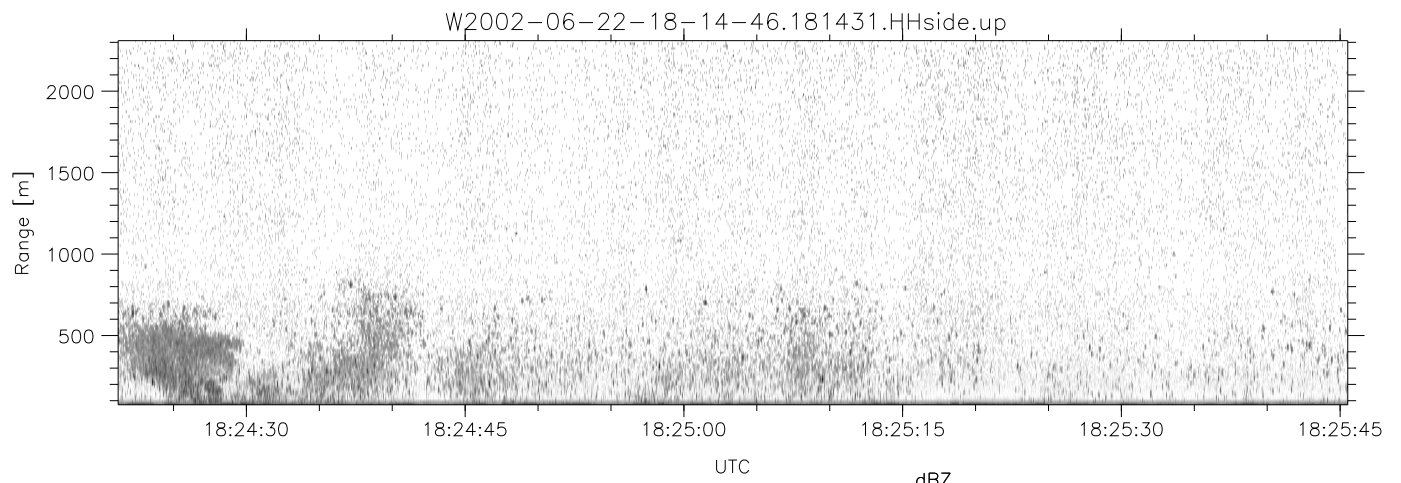
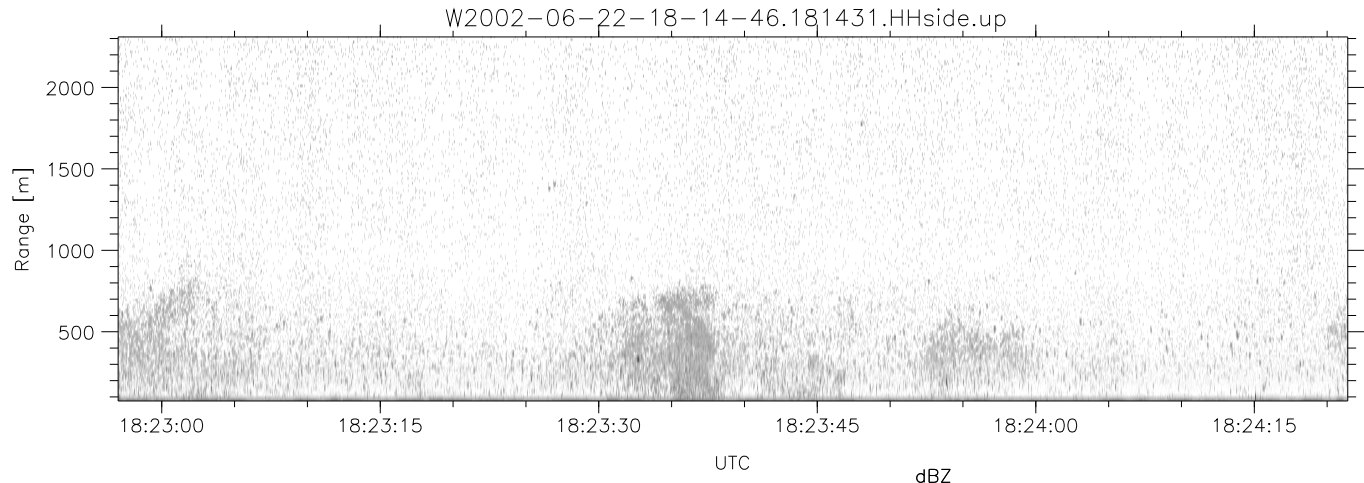
	Min	Max	Mean	Std	Varc%
hhN(dB)	-66.87	-64.98	-65.87	-78.90	5.0
vvN(dB)	-65.75	-63.85	-64.80	-77.75	5.1
hhL(dB)	-15.16	-3.23	-10.44	-12.28	65.4
vhL(dB)	-27.85	-6.08	-15.24	-15.12	102.
ppN(m/s)	-15.80	15.80	0.12	9.07	
ppT(m/s)	-0.04	0.03	-0.00	0.01	
vh/hh(dB)	-NaN	-4.35	-15.78	-10.61	328.
hnjmp(dB)	-1.21	0.98	-0.12	-11.85	6.7
vnjmp(dB)	-1.33	0.97	-0.12	-11.77	6.8



IHOP 2002 (dual-antenna config, modes 1,3,4,7) Data (cal: 49.0,50.0)

W2002-06-22-18-14-46 - SPPMAG
 IRIG:1,UTC: 18:14:31.98 to 18:28:14.46, Dur: 823s
 TimeLngth: 822.48s, TimeInt: 24ms (40.9pps)
 TimeCor=-13.0s, DSPDif(mn,min,mx):22,20,322
 PPS(min,max,std): 21,42,2.74
 Prof: 188 to 33823, NumProf(t/r): 33635/30122
 ProcTime/Recs: 18:14:31-18:26:48/0-30121
 MxACQtime: 17ms; DRate: 97.9KB/s; Flags: 0, 0, 0
 Pulse: 275ns, IFfilt: 5.0MHz; ppPol: HH
 TxPol: H, PRF: 20 kHz
 Range: Delay 75m, Spacing 15m, Gates 150
 Ave. Pulses: 348, Rng/Prof Aspect@90m/s: 6.8

	Min	Max	Mean	Std	Varc%
hhN(dB)	-66.87	-64.98	-65.87	-78.90	5.0
vvN(dB)	-65.75	-63.85	-64.80	-77.75	5.1
hhL(dB)	-15.16	-3.23	-10.44	-12.28	65.4
vhL(dB)	-27.85	-6.08	-15.24	-15.12	102.
ppN(m/s)	-15.80	15.80	0.12	9.07	
ppT(m/s)	-0.04	0.03	-0.00	0.01	
vh/hh(dB)	-NaN	-4.35	-15.78	-10.61	328.
hnjmp(dB)	-1.21	0.98	-0.12	-11.85	6.7
vnjmp(dB)	-1.33	0.97	-0.12	-11.77	6.8



IHOP 2002 (dual-antenna config, modes 1,3,4,7) Data (cal: 49.0,50.0)

W2002-06-22-18-14-46 - SPPMAG
 IRIG:1,UTC: 18:14:31.98 to 18:28:14.46, Dur: 823s
 TimeLngth: 822.48s, TimeInt: 24ms (40.9pps)
 TimeCor=-13.0s, DSPDif(mn,min,mx):22,20,322
 PPS(min,max,std): 21,42,2.74
 Prof: 188 to 33823, NumProf(t/r): 33635/30122
 ProcTime/Recs: 18:14:31-18:26:48/0-30121
 MxACQtime: 17ms; DRate: 97.9KB/s; Flags: 0, 0, 0
 Pulse: 275ns, IFfilt: 5.0MHz; ppPol: HH
 TxPol: H, PRF: 20 kHz
 Range: Delay 75m, Spacing 15m, Gates 150
 Ave. Pulses: 348, Rng/Prof Aspect@90m/s: 6.8

	Min	Max	Mean	Std	Varc%
hhN (dB)	-66.87	-64.98	-65.87	-78.90	5.0
vvN (dB)	-65.75	-63.85	-64.80	-77.75	5.1
hhL (dB)	-15.16	-3.23	-10.44	-12.28	65.4
vhL (dB)	-27.85	-6.08	-15.24	-15.12	102.
ppN (m/s)	-15.80	15.80	0.12	9.07	
ppT (m/s)	-0.04	0.03	-0.00	0.01	
vh/hh (dB)	-NaN	-4.35	-15.78	-10.61	328.
hn_jmp (dB)	-1.21	0.98	-0.12	-11.85	6.7
vn_jmp (dB)	-1.33	0.97	-0.12	-11.77	6.8