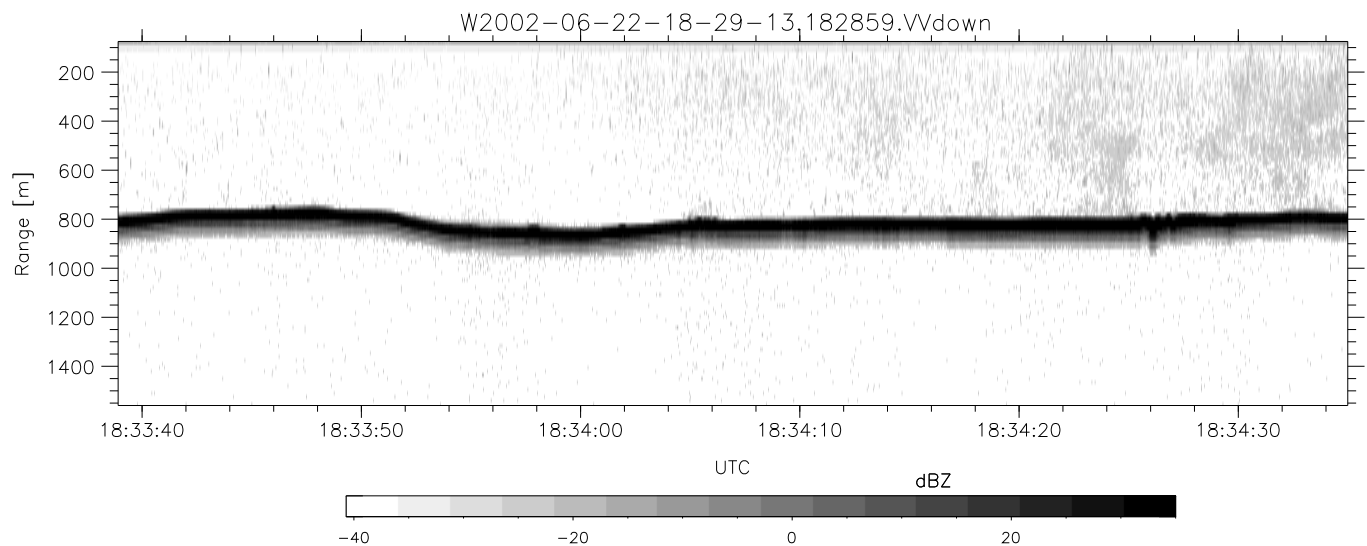
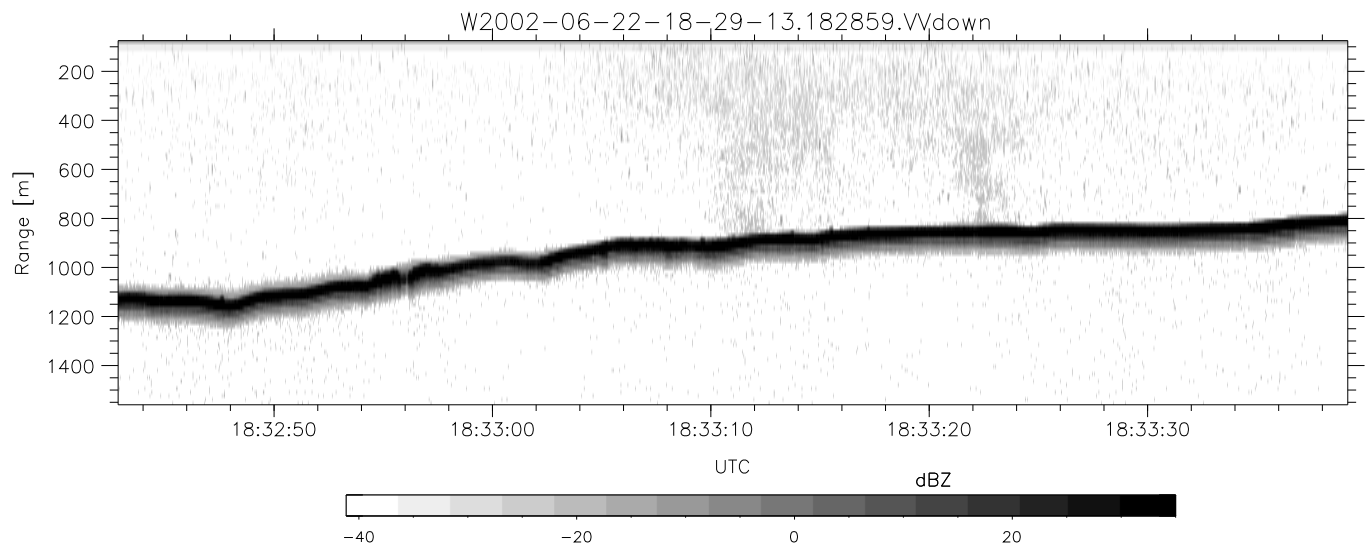
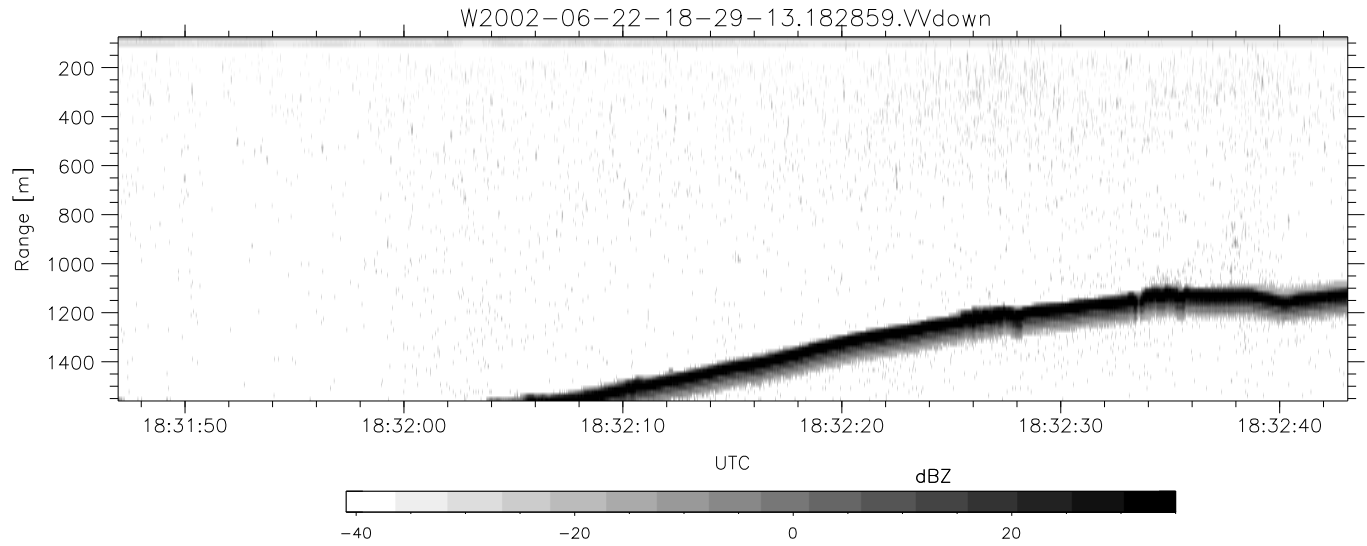


IHOP 2002 (dual-antenna config, modes 1,3,4,7) Data (cal: 49.0,50.0)

W2002-06-22-18-29-13 - PPMAG4  
 IRIG:1,UTC: 18:28:59.01 to 18:44:14.80, Dur: 915s  
 TimeLngth: 915.78s, TimeInt: 28ms (34.5pps)  
 TimeCor=-13.0s, DSPDif(mn,min,mx):28,28,339  
 PPS(min,max,std): 24,36,2.24  
 Prof: 451 to 32057, NumProf(t/r): 31606/17069  
 ProcTime/Recs: 18:28:59-18:37:13/0-17068  
 MxACQtime: 33ms; DRate: 193.2KB/s; Flags: 0, 0, 0  
 Pulse: 275ns, IFfilt: 5.0MHz; ppPol: HH HV VV  
 TxPol: HHVV, PRF: 20 10 20 10 kHz  
 Range: Delay 75m, Spacing 15m, Gates 100  
 Ave. Pulses: 84, Rng/Prof Aspect@90m/s: 5.8

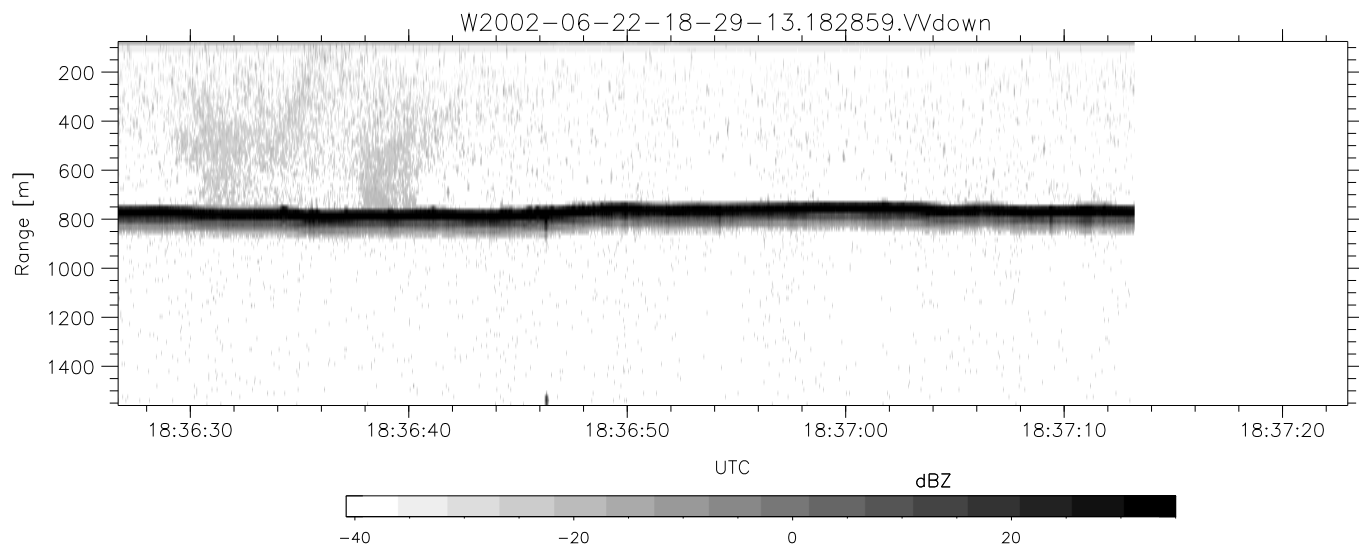
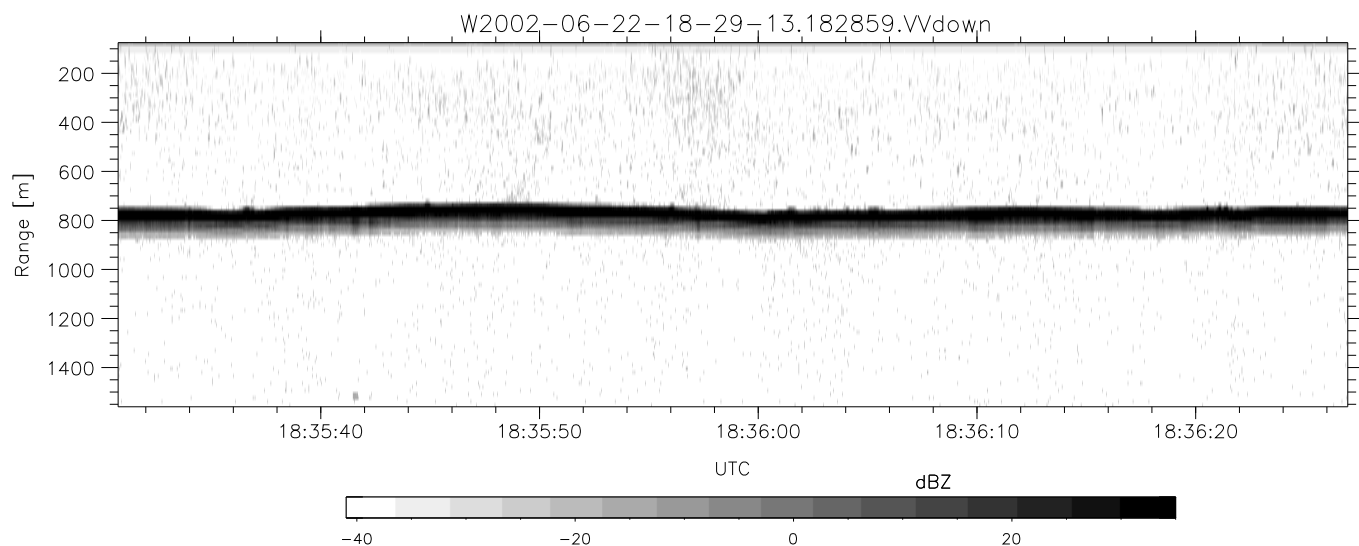
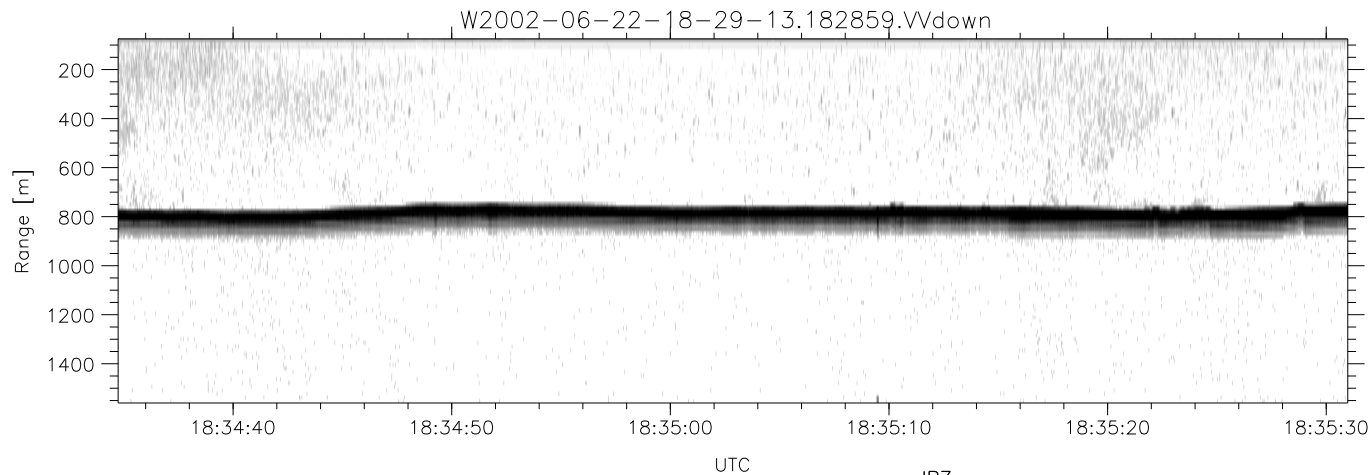
	Min	Max	Mean	Std	Varc%
hhN(dB)	-67.64	-64.08	-65.98	-76.01	9.9
vvN(dB)	-66.80	-63.34	-64.85	-74.90	9.9
hhL(dB)	-10.36	-2.75	-5.10	-11.87	21.0
vvL(dB)	-8.71	-1.39	-4.31	-9.95	27.3
ppN(m/s)	-12.43	12.22	-0.00	4.15	
ppT(m/s)	-98.20	96.54	-0.04	32.82	
hh/vv(dB)	-NaN	56.31	24.16	39.91	3759
vh/hh(dB)	-99.00	-99.00	-99.00	-99.00	-99.
hv/vv(dB)	-NaN	-34.80	-57.10	-46.03	1279
hnjmp(dB)	-2.13	2.48	0.16	-8.37	14.1
vnjmp(dB)	-2.05	2.20	0.17	-8.38	14.0



IHOP 2002 (dual-antenna config, modes 1,3,4,7) Data (cal: 49.0,50.0)

W2002-06-22-18-29-13 - PPMAG4  
 IRIG:1,UTC: 18:28:59.01 to 18:44:14.80, Dur: 915s  
 TimeLngth: 915.78s, TimeInt: 28ms (34.5pps)  
 TimeCor=-13.0s, DSPDif(mn,min,mx):28,28,339  
 PPS(min,max,std): 24,36,2.24  
 Prof: 451 to 32057, NumProf(t/r): 31606/17069  
 ProcTime/Recs: 18:28:59-18:37:13/0-17068  
 MxACQtime: 33ms; DRate: 193.2KB/s; Flags: 0, 0, 0  
 Pulse: 275ns, IFfilt: 5.0MHz; ppPol: HH HV VV  
 TxPol: HHVV, PRF: 20 10 20 10 kHz  
 Range: Delay 75m, Spacing 15m, Gates 100  
 Ave. Pulses: 84, Rng/Prof Aspect@90m/s: 5.8

	Min	Max	Mean	Std	Varc%
hhN(dB)	-67.64	-64.08	-65.98	-76.01	9.9
vvN(dB)	-66.80	-63.34	-64.85	-74.90	9.9
hhL(dB)	-10.36	-2.75	-5.10	-11.87	21.0
vvL(dB)	-8.71	-1.39	-4.31	-9.95	27.3
ppN(m/s)	-12.43	12.22	-0.00	4.15	
ppT(m/s)	-98.20	96.54	-0.04	32.82	
hh/vv(dB)	-NaN	56.31	24.16	39.91	3759
vh/hh(dB)	-99.00	-99.00	-99.00	-99.00	-99.
hv/vv(dB)	-NaN	-34.80	-57.10	-46.03	1279
hnjmp(dB)	-2.13	2.48	0.16	-8.37	14.1
vnjmp(dB)	-2.05	2.20	0.17	-8.38	14.0



IHOP 2002 (dual-antenna config, modes 1,3,4,7) Data (cal: 49.0,50.0)

	Min	Max	Mean	Std	Varc%	
W2002-06-22-18-29-13 - PPMAG4						
IRIG:1,UTC: 18:28:59.01 to 18:44:14.80, Dur: 915s	hhN (dB)	-67.64	-64.08	-65.98	-76.01	9.9
TimeLngth: 915.78s, TimeInt: 28ms (34.5pps)	vvN (dB)	-66.80	-63.34	-64.85	-74.90	9.9
TimeCor=-13.0s, DSPDif(mn,min,mx):28,28,339	hhL (dB)	-10.36	-2.75	-5.10	-11.87	21.0
PPS(min,max,std): 24,36,2.24	vvL (dB)	-8.71	-1.39	-4.31	-9.95	27.3
Prof: 451 to 32057, NumProf(t/r): 31606/17069	ppN (m/s)	-12.43	12.22	-0.00	4.15	
ProcTime/Recs: 18:28:59-18:37:13/0-17068	ppT (m/s)	-98.20	96.54	-0.04	32.82	
MxACQtime: 33ms; DRate: 193.2KB/s; Flags: 0, 0, 0	hh/vv (dB)	-NaN	56.31	24.16	39.91	3759
Pulse: 275ns, IFilt: 5.0MHz; ppPol: HH HV VV	vh/hh (dB)	-99.00	-99.00	-99.00	-99.00	-99.0
TxPol: HHVV, PRF: 20 10 20 10 kHz	hv/vv (dB)	-NaN	-34.80	-57.10	-46.03	1279
Range: Delay 75m, Spacing 15m, Gates 100	hnjmp (dB)	-2.13	2.48	0.16	-8.37	14.1
Ave. Pulses: 84, Rng/Prof Aspect@90m/s: 5.8	vnjmp (dB)	-2.05	2.20	0.17	-8.38	14.0