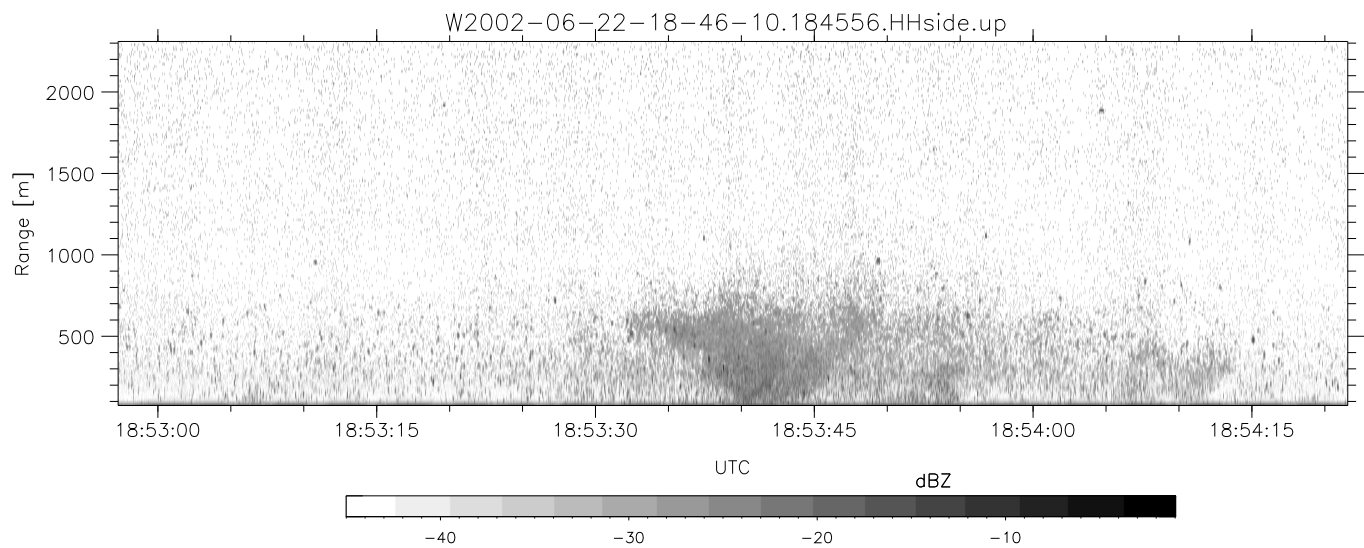
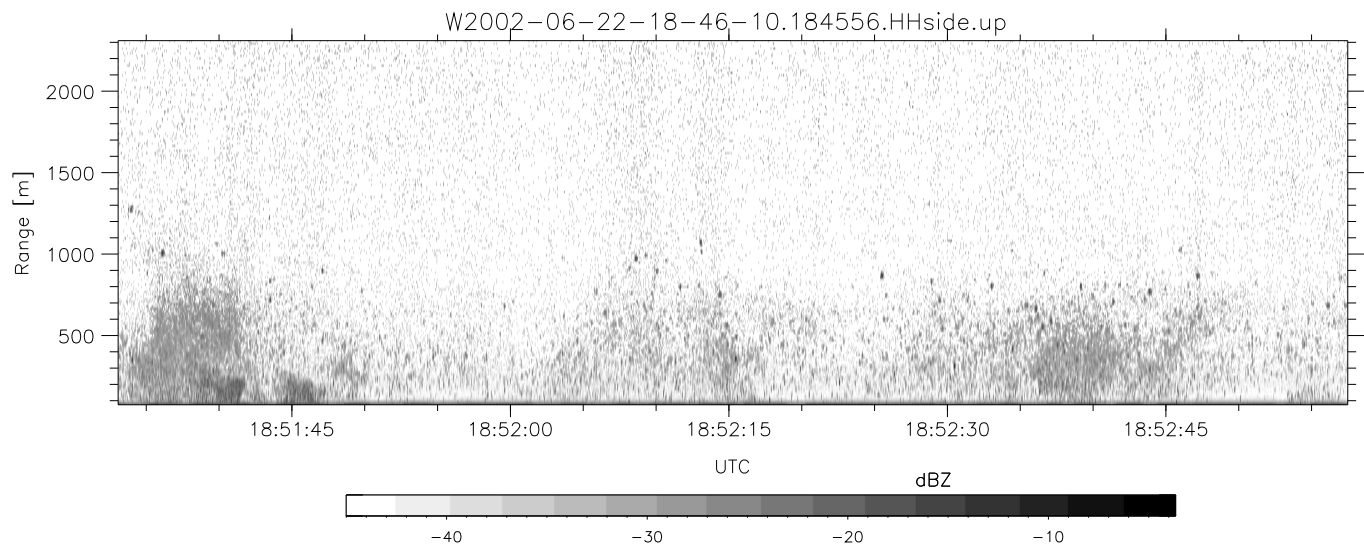
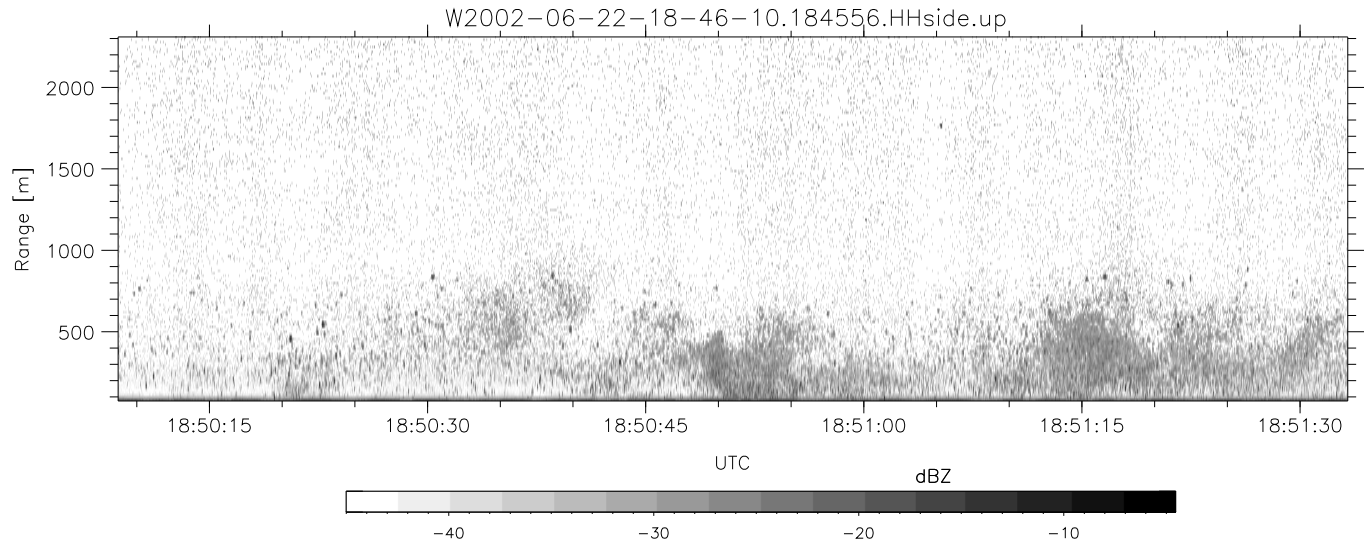


IHOP 2002 (dual-antenna config, modes 1,3,4,7) Data (cal: 49.0,50.0)

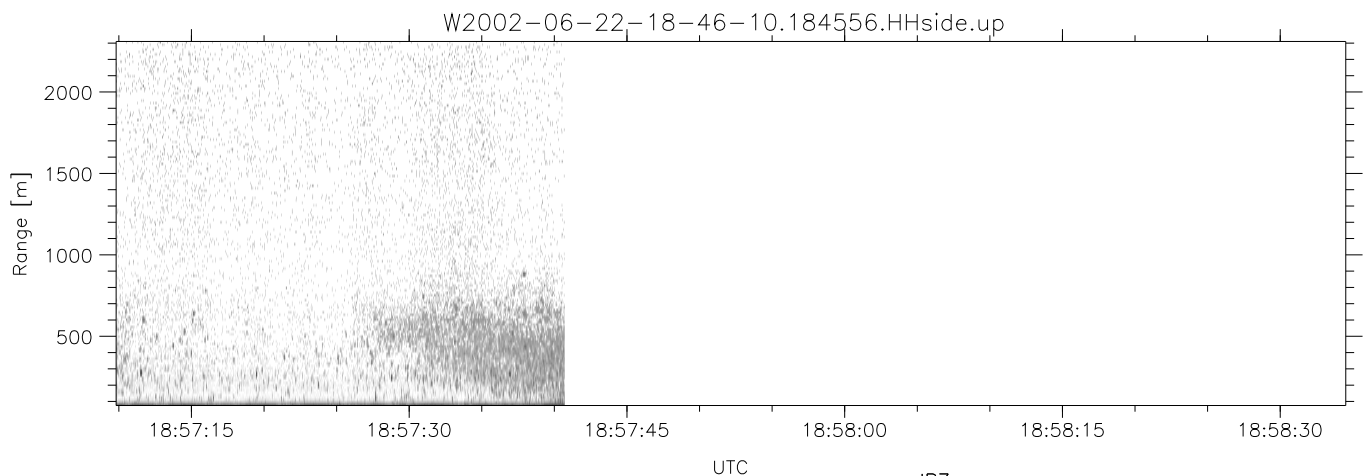
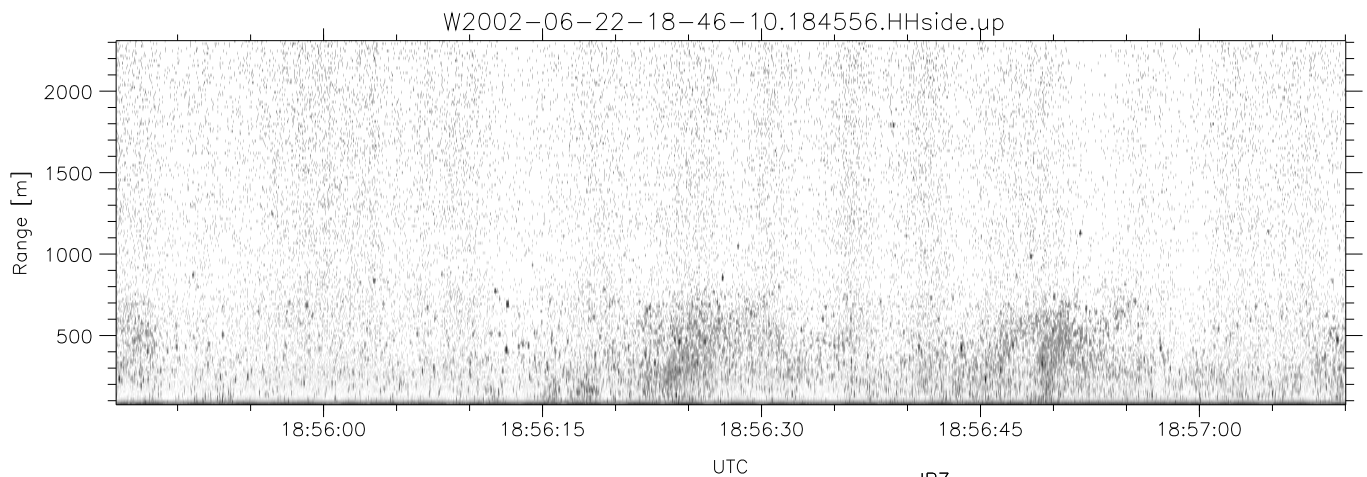
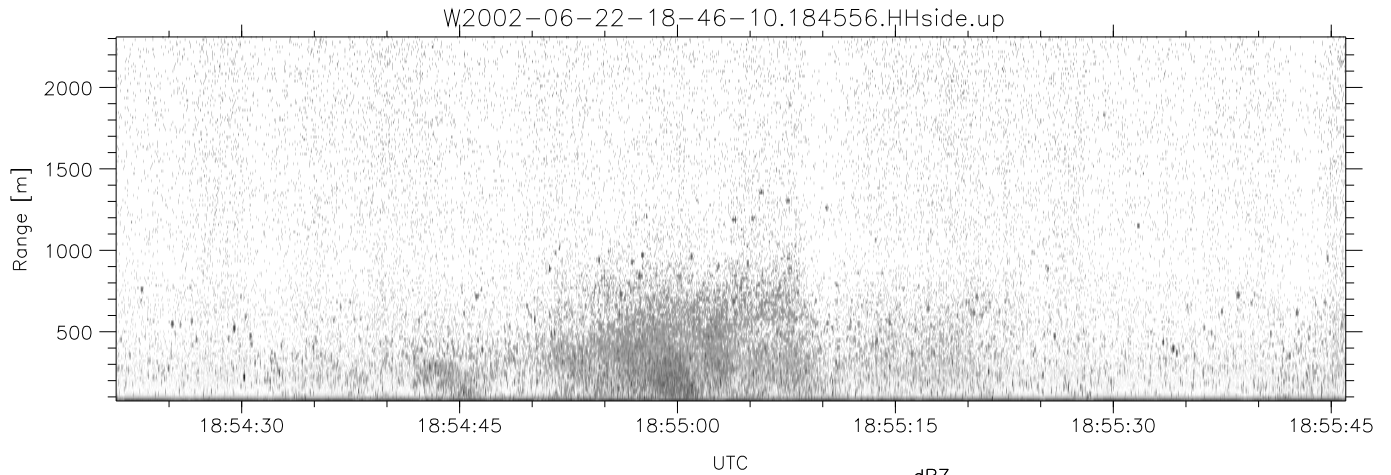
W2002-06-22-18-46-10 - SPPMAG	Min	Max	Mean	Std	Varc%	
IRIG:1,UTC: 18:45:56.31 to 18:57:40.70, Dur: 704s	hhN (dB)	-66.95	-65.08	-66.00	-79.03	5.0
TimeLngth: 704.39s, TimeInt: 24ms (40.8pps)	vvN (dB)	-65.81	-64.11	-64.94	-77.88	5.1
TimeCor=-13.0s, DSPDif(mn,min,mx):24,20,321	hhL (dB)	-14.50	-5.96	-10.06	-15.37	29.5
PPS(min,max,std): 30,42,2.63	vhL (dB)	-26.37	-7.75	-15.82	-16.54	84.6
Prof: 246 to 28990, NumProf(t/r): 28744/28744	ppN (m/s)	-15.80	15.80	-0.13	9.02	
MxACQtime: 17ms; DRate: 97.7KB/s; Flags: 0, 0, 0	ppT (m/s)	-0.04	0.03	-0.00	0.01	
Pulse: 275ns, IFfilt: 5.0MHz; ppPol: HH	vh/hh (dB)	-NaN	-24.15	-32.42	-30.80	145.
TxPol: H, PRF: 20 kHz	hnjmp (dB)	-1.25	1.17	-0.10	-11.77	6.8
Range: Delay 75m, Spacing 15m, Gates 150	vnjmp (dB)	-1.22	1.14	-0.12	-11.76	6.8
Ave. Pulses: 348, Rng/Prof Aspect@90m/s: 6.8						



IHOP 2002 (dual-antenna config, modes 1,3,4,7) Data (cal: 49.0,50.0)

W2002-06-22-18-46-10 - SPPMAG
 IRIG:1,UTC: 18:45:56.31 to 18:57:40.70, Dur: 704s
 TimeLngth: 704.39s, TimeInt: 24ms (40.8pps)
 TimeCor=-13.0s, DSPDif(mn,min,mx):24,20,321
 PPS(min,max,std): 30,42,2.63
 Prof: 246 to 28990, NumProf(t/r): 28744/28744
 MxACQtime: 17ms; DRate: 97.7KB/s; Flags: 0, 0, 0
 Pulse: 275ns, IFfilt: 5.0MHz; ppPol: HH
 TxPol: H, PRF: 20 kHz
 Range: Delay 75m, Spacing 15m, Gates 150
 Ave. Pulses: 348, Rng/Prof Aspect@90m/s: 6.8

	Min	Max	Mean	Std	Varc%
hhN(dB)	-66.95	-65.08	-66.00	-79.03	5.0
vvN(dB)	-65.81	-64.11	-64.94	-77.88	5.1
hhL(dB)	-14.50	-5.96	-10.06	-15.37	29.5
vhL(dB)	-26.37	-7.75	-15.82	-16.54	84.6
ppN(m/s)	-15.80	15.80	-0.13	9.02	
ppT(m/s)	-0.04	0.03	-0.00	0.01	
vh/hh(dB)	-NaN	-24.15	-32.42	-30.80	145.
hnjmp(dB)	-1.25	1.17	-0.10	-11.77	6.8
vnjmp(dB)	-1.22	1.14	-0.12	-11.76	6.8



IHOP 2002 (dual-antenna config, modes 1,3,4,7) Data (cal: 49.0,50.0)

W2002-06-22-18-46-10 - SPPMAG
 IRIG:1,UTC: 18:45:56.31 to 18:57:40.70, Dur: 704s
 TimeLngth: 704.39s, TimeInt: 24ms (40.8pps)
 TimeCor=-13.0s, DSPDif(mn,min,mx):24,20,321
 PPS(min,max,std): 30,42,2.63
 Prof: 246 to 28990, NumProf(t/r): 28744/28744
 MxACQtime: 17ms; DRate: 97.7KB/s; Flags: 0, 0, 0
 Pulse: 275ns, IFfilt: 5.0MHz; ppPol: HH
 TxPol: H, PRF: 20 kHz
 Range: Delay 75m, Spacing 15m, Gates 150
 Ave. Pulses: 348, Rng/Prof Aspect@90m/s: 6.8

	Min	Max	Mean	Std	Varc%
hhN(dB)	-66.95	-65.08	-66.00	-79.03	5.0
vvN(dB)	-65.81	-64.11	-64.94	-77.88	5.1
hhL(dB)	-14.50	-5.96	-10.06	-15.37	29.5
vhL(dB)	-26.37	-7.75	-15.82	-16.54	84.6
ppN(m/s)	-15.80	15.80	-0.13	9.02	
ppT(m/s)	-0.04	0.03	-0.00	0.01	
vh/hh(dB)	-NaN	-24.15	-32.42	-30.80	145.
hnjmp(dB)	-1.25	1.17	-0.10	-11.77	6.8
vnjmp(dB)	-1.22	1.14	-0.12	-11.76	6.8