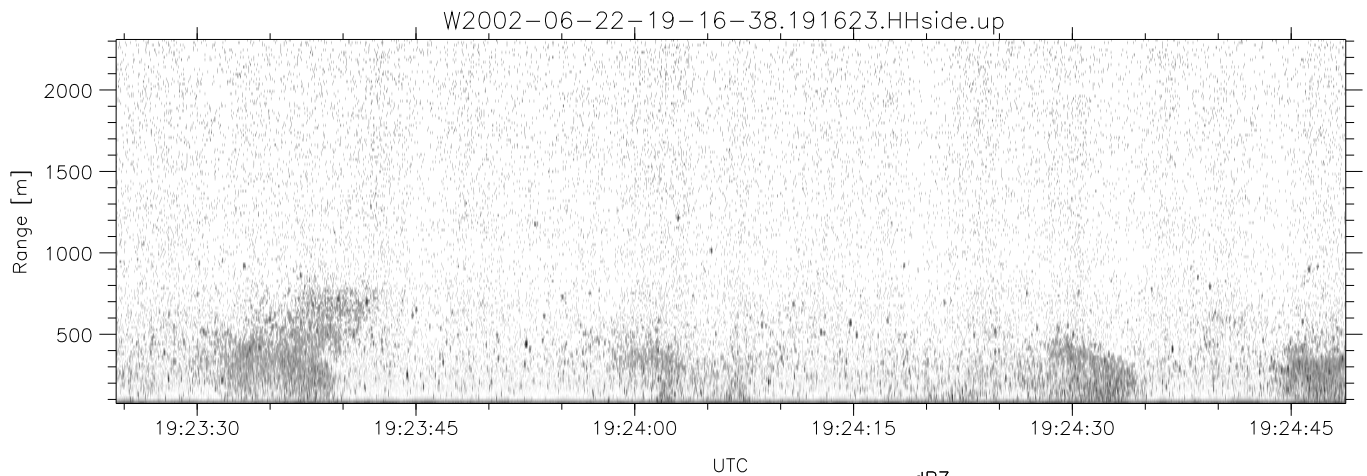
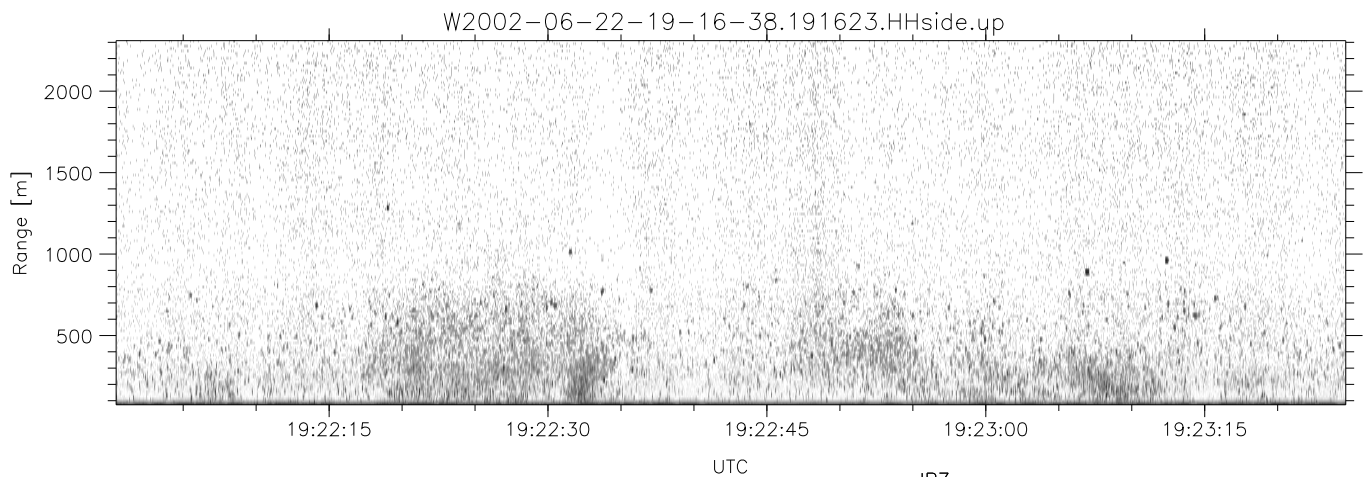
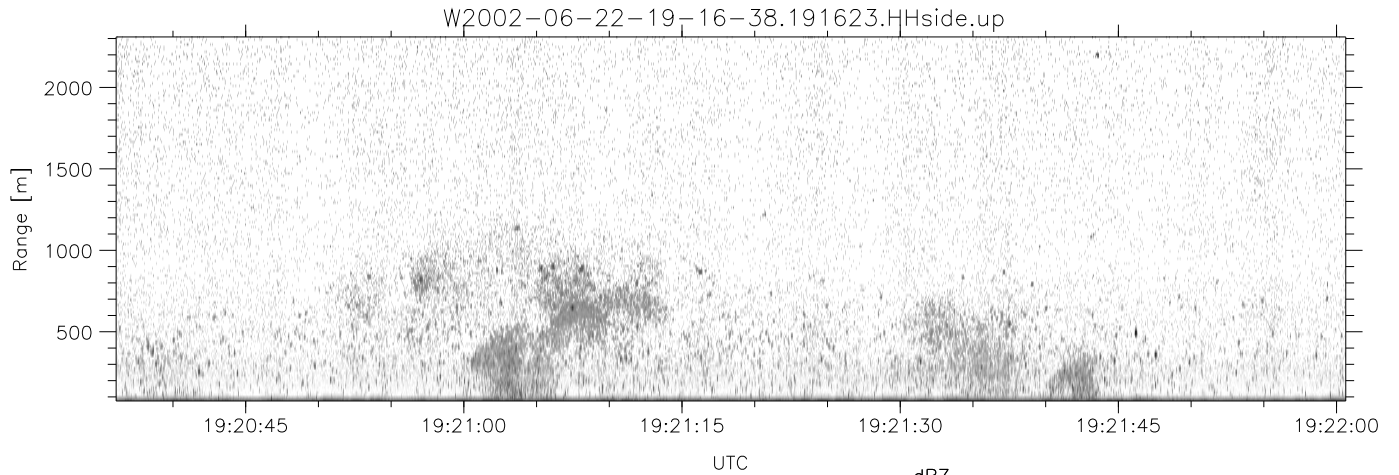


IHOP 2002 (dual-antenna config, modes 1,3,4,7) Data (cal: 49.0,50.0)

W2002-06-22-19-16-38 - SPPMAG
 IRIG:1,UTC: 19:16:23.65 to 19:40:06.00, Dur: 1423s
 TimeLngth: 1422.36s, TimeInt: 24ms (40.5pps)
 TimeCor=-13.0s, DSPDif(mn,min,mx):24,20,724
 PPS(min,max,std): 13,42,2.82
 Prof: 361 to 57991, NumProf(t/r): 57630/30122
 ProcTime/Recs: 19:16:23-19:28:47/0-30121
 MxACQtime: 17ms; DRate: 97.0KB/s; Flags: 0, 0, 0
 Pulse: 275ns, IFfilt: 5.0MHz; ppPol: HH
 TxPol: H, PRF: 20 kHz
 Range: Delay 75m, Spacing 15m, Gates 150
 Ave. Pulses: 348, Rng/Prof Aspect@90m/s: 6.8

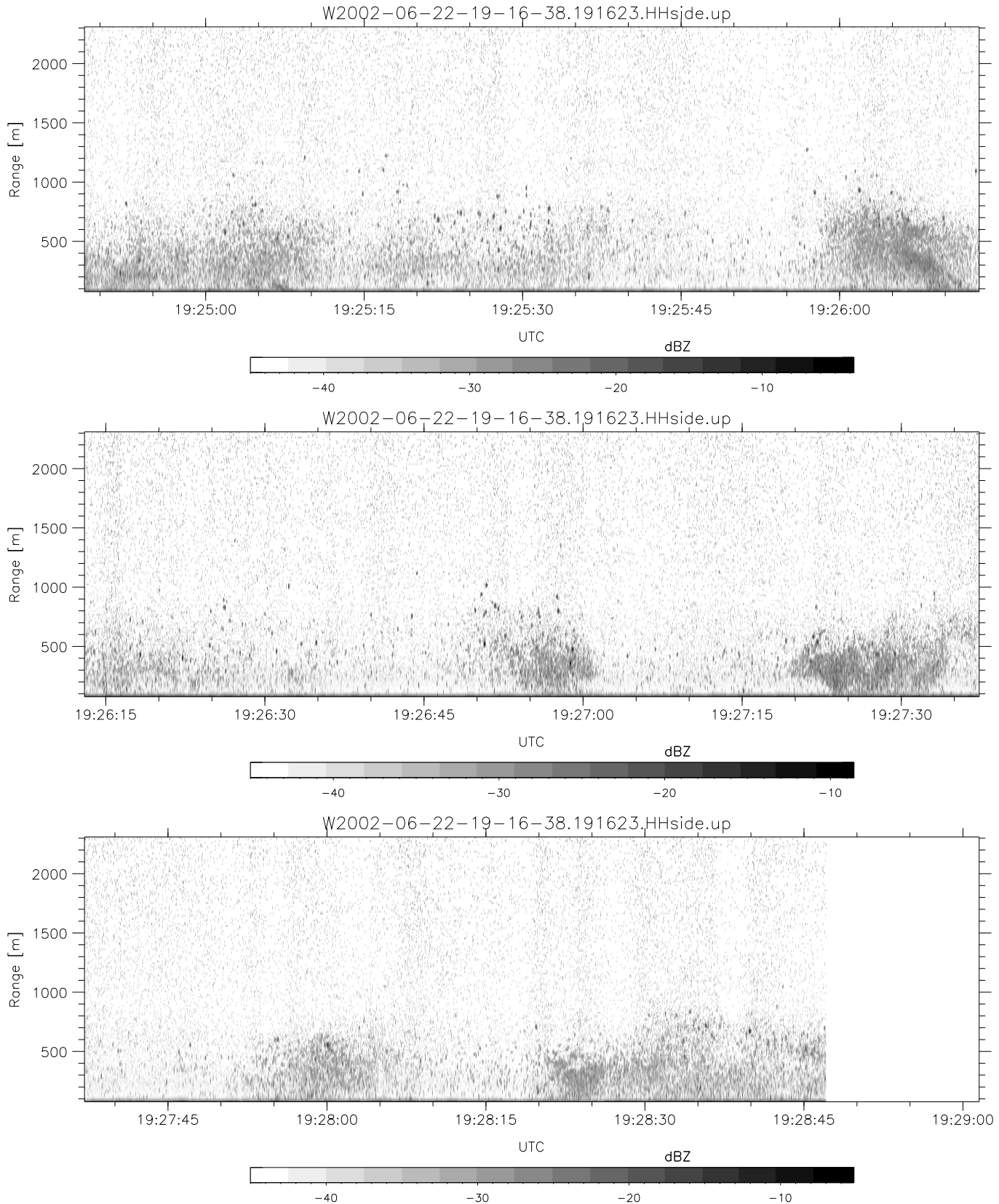
	Min	Max	Mean	Std	Varc%
hhN(dB)	-67.02	-65.24	-66.12	-79.11	5.0
vvN(dB)	-66.01	-64.16	-65.05	-77.99	5.1
hhL(dB)	-18.75	-6.33	-10.11	-15.43	29.4
vhL(dB)	-21.65	-7.44	-12.40	-14.64	59.7
ppN(m/s)	-15.80	15.80	0.03	9.05	
ppT(m/s)	-0.05	0.03	-0.00	0.01	
vh/hh(dB)	-NaN	-11.41	-26.39	-19.39	501.
hnjmp(dB)	-1.05	1.37	0.13	-11.56	6.8
vnjmp(dB)	-1.15	1.39	0.14	-11.49	6.9



IHOP 2002 (dual-antenna config, modes 1,3,4,7) Data (cal: 49.0,50.0)

W2002-06-22-19-16-38 - SPPMAG
 IRIG:1,UTC: 19:16:23.65 to 19:40:06.00, Dur: 1423s
 TimeLngth: 1422.36s, TimeInt: 24ms (40.5pps)
 TimeCor=-13.0s, DSPDif(mn,min,mx):24,20,724
 PPS(min,max,std): 13,42,2.82
 Prof: 361 to 57991, NumProf(t/r): 57630/30122
 ProcTime/Recs: 19:16:23-19:28:47/0-30121
 MxACQtime: 17ms; DRate: 97.0KB/s; Flags: 0, 0, 0
 Pulse: 275ns, IFfilt: 5.0MHz; ppPol: HH
 TxPol: H, PRF: 20 kHz
 Range: Delay 75m, Spacing 15m, Gates 150
 Ave. Pulses: 348, Rng/Prof Aspect@90m/s: 6.8

	Min	Max	Mean	Std	Varc%
hhN(dB)	-67.02	-65.24	-66.12	-79.11	5.0
vvN(dB)	-66.01	-64.16	-65.05	-77.99	5.1
hhL(dB)	-18.75	-6.33	-10.11	-15.43	29.4
vhL(dB)	-21.65	-7.44	-12.40	-14.64	59.7
ppN(m/s)	-15.80	15.80	0.03	9.05	
ppT(m/s)	-0.05	0.03	-0.00	0.01	
vh/hh(dB)	-NaN	-11.41	-26.39	-19.39	501.
hnjmp(dB)	-1.05	1.37	0.13	-11.56	6.8
vnjmp(dB)	-1.15	1.39	0.14	-11.49	6.9



IHOP 2002 (dual-antenna config, modes 1,3,4,7) Data (cal: 49.0,50.0)

W2002-06-22-19-16-38 - SPPMAG
 IRIG:1,UTC: 19:16:23.65 to 19:40:06.00, Dur: 1423s
 TimeLngth: 1422.36s, TimeInt: 24ms (40.5pps)
 TimeCor=-13.0s, DSPDif(mn,min,mx):24,20,724
 PPS(min,max,std): 13,42,2.82
 Prof: 361 to 57991, NumProf(t/r): 57630/30122
 ProcTime/Recs: 19:16:23-19:28:47/0-30121
 MxACQtime: 17ms; DRate: 97.0KB/s; Flags: 0, 0, 0
 Pulse: 275ns, IFfilt: 5.0MHz; ppPol: HH
 TxPol: H, PRF: 20 kHz
 Range: Delay 75m, Spacing 15m, Gates 150
 Ave. Pulses: 348, Rng/Prof Aspect@90m/s: 6.8

	Min	Max	Mean	Std	Varc%
hhN(dB)	-67.02	-65.24	-66.12	-79.11	5.0
vvN(dB)	-66.01	-64.16	-65.05	-77.99	5.1
hhL(dB)	-18.75	-6.33	-10.11	-15.43	29.4
vhL(dB)	-21.65	-7.44	-12.40	-14.64	59.7
ppN(m/s)	-15.80	15.80	0.03	9.05	
ppT(m/s)	-0.05	0.03	-0.00	0.01	
vh/hh(dB)	-NaN	-11.41	-26.39	-19.39	501.
hnjmp(dB)	-1.05	1.37	0.13	-11.56	6.8
vnjmp(dB)	-1.15	1.39	0.14	-11.49	6.9