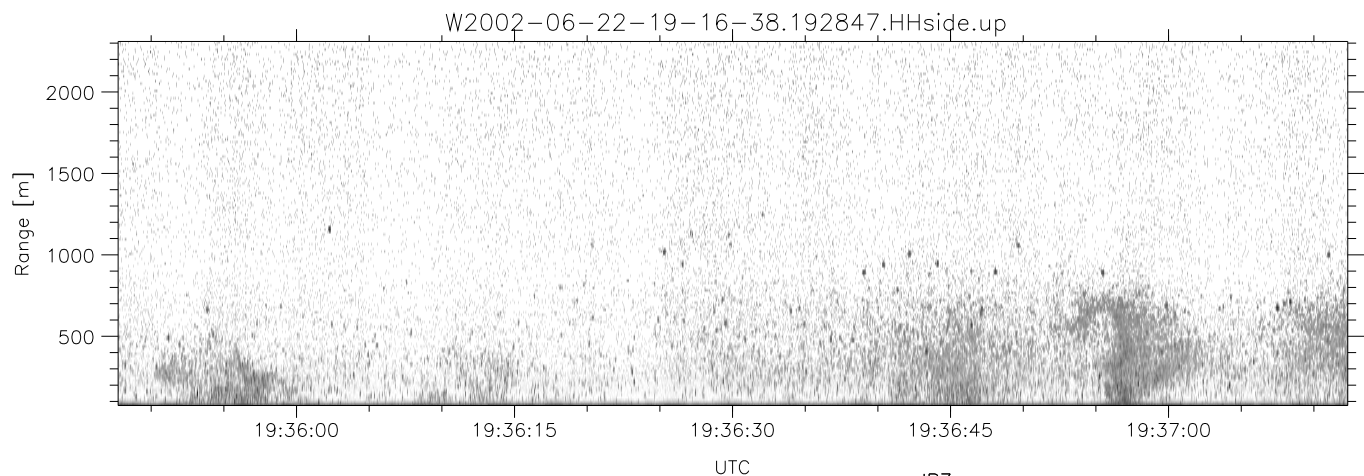
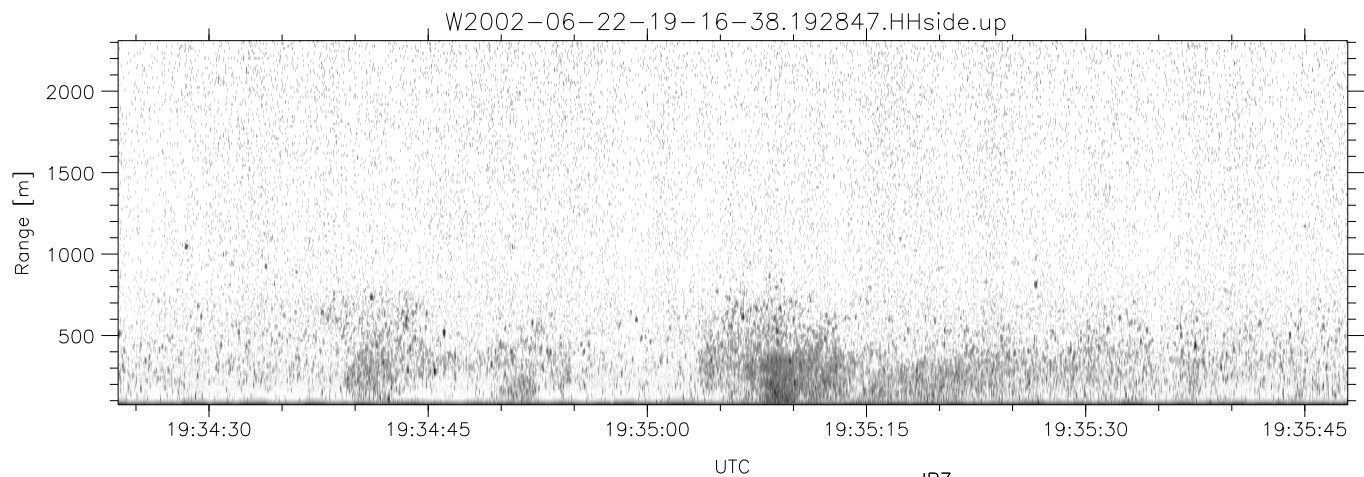
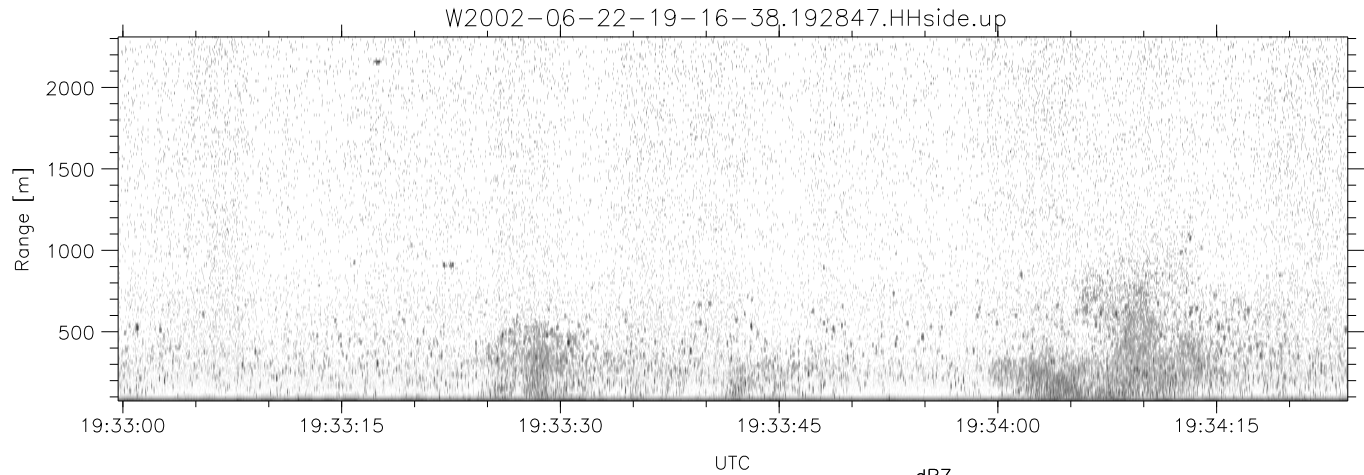


IHOP 2002 (dual-antenna config, modes 1,3,4,7) Data (cal: 49.0,50.0)

W2002-06-22-19-16-38 - SPPMAG
 IRIG:1,UTC: 19:16:23.65 to 19:40:06.00, Dur: 1423s
 TimeLngth: 1422.36s, TimeInt: 24ms (40.5pps)
 TimeCor=-13.0s, DSPDif(mn,min,mx):24,20,339
 PPS(min,max,std): 27,42,2.74
 Prof: 361 to 57991, NumProf(t/r): 57630/27508
 ProcTime/Recs: 19:28:47-19:40:06/30122-57629
 MxACQtime: 17ms; DRate: 97.0KB/s; Flags: 0, 0, 0
 Pulse: 275ns, IFfilt: 5.0MHz; ppPol: HH
 TxPol: H, PRF: 20 kHz
 Range: Delay 75m, Spacing 15m, Gates 150
 Ave. Pulses: 348, Rng/Prof Aspect@90m/s: 6.8

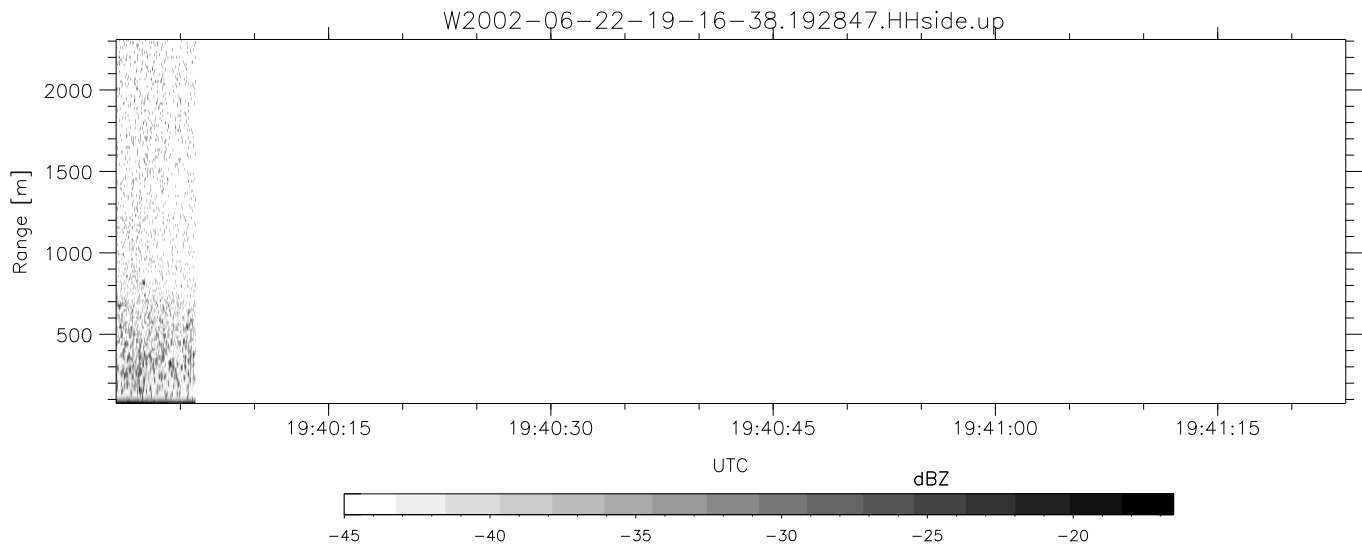
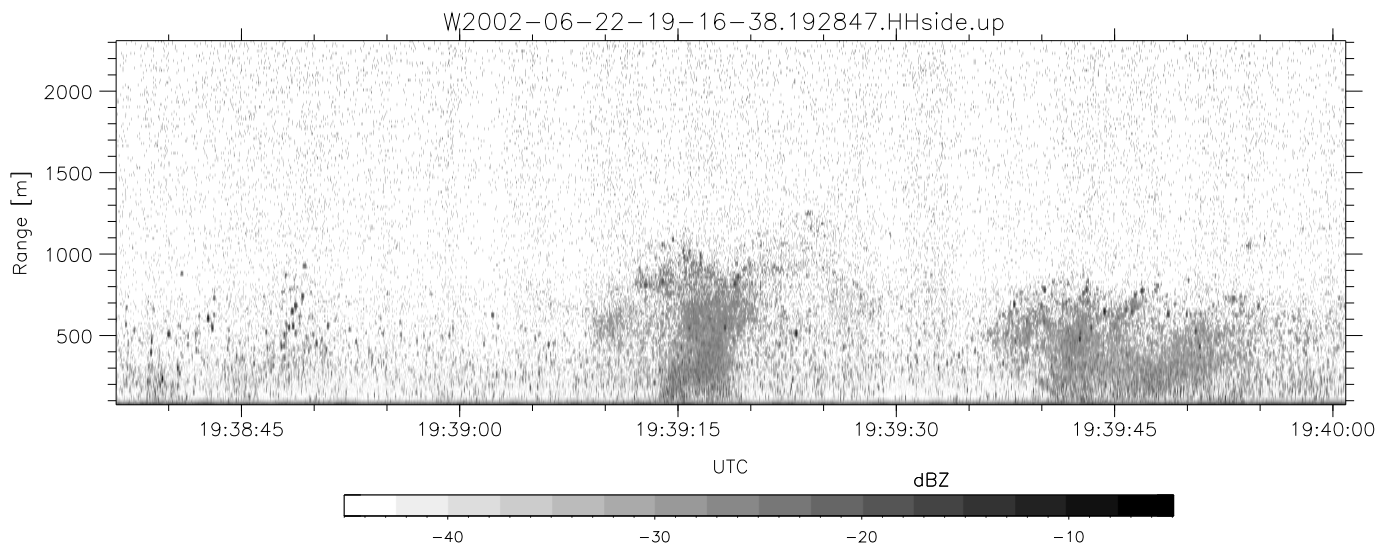
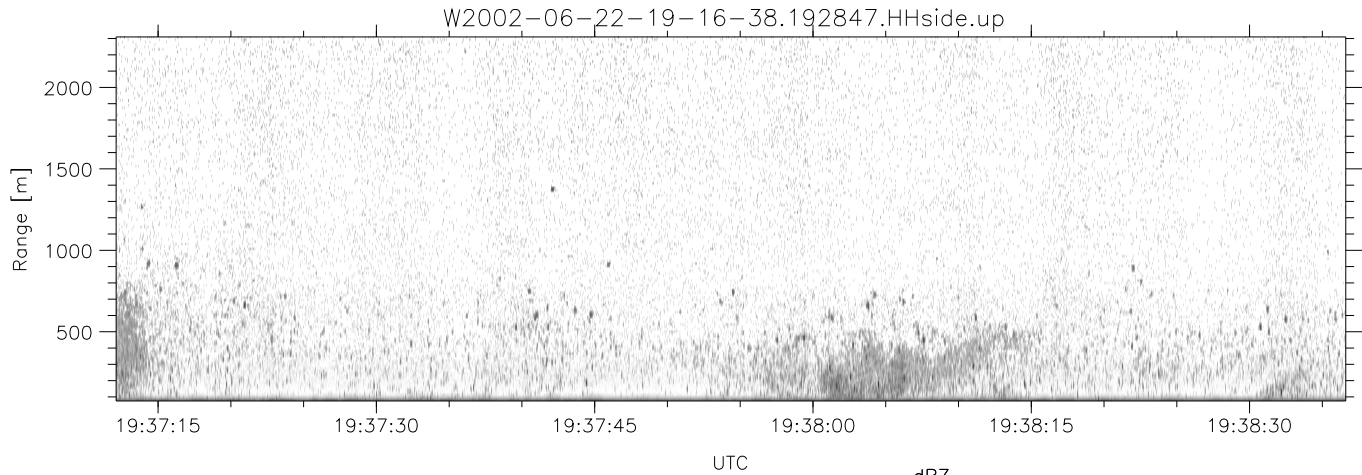
	Min	Max	Mean	Std	Varc%
hhN(dB)	-67.12	-65.36	-66.19	-79.18	5.0
vvN(dB)	-66.05	-64.25	-65.11	-78.01	5.1
hhL(dB)	-16.89	-6.28	-10.41	-15.47	31.2
vhL(dB)	-23.69	-7.44	-12.73	-14.63	64.6
ppN(m/s)	-15.80	15.80	0.05	8.99	
ppT(m/s)	-0.03	0.03	-0.00	0.01	
vh/hh(dB)	-NaN	-27.27	-33.72	-33.20	112.
hn_jmp(dB)	-1.19	1.42	0.13	-11.47	6.9
vn_jmp(dB)	-1.12	1.42	0.15	-11.50	6.8



IHOP 2002 (dual-antenna config, modes 1,3,4,7) Data (cal: 49.0,50.0)

W2002-06-22-19-16-38 - SPPMAG
 IRIG:1,UTC: 19:16:23.65 to 19:40:06.00, Dur: 1423s
 TimeLngth: 1422.36s, TimeInt: 24ms (40.5pps)
 TimeCor=-13.0s, DSPDif(mn,min,mx):24,20,339
 PPS(min,max,std): 27,42,2.74
 Prof: 361 to 57991, NumProf(t/r): 57630/27508
 ProcTime/Recs: 19:28:47-19:40:06/30122-57629
 MxACQtime: 17ms; DRate: 97.0KB/s; Flags: 0, 0, 0
 Pulse: 275ns, IFfilt: 5.0MHz; ppPol: HH
 TxPol: H, PRF: 20 kHz
 Range: Delay 75m, Spacing 15m, Gates 150
 Ave. Pulses: 348, Rng/Prof Aspect@90m/s: 6.8

	Min	Max	Mean	Std	Varc%
hhN(dB)	-67.12	-65.36	-66.19	-79.18	5.0
vvN(dB)	-66.05	-64.25	-65.11	-78.01	5.1
hhL(dB)	-16.89	-6.28	-10.41	-15.47	31.2
vhL(dB)	-23.69	-7.44	-12.73	-14.63	64.6
ppN(m/s)	-15.80	15.80	0.05	8.99	
ppT(m/s)	-0.03	0.03	-0.00	0.01	
vh/hh(dB)	-NaN	-27.27	-33.72	-33.20	112.
hnjmp(dB)	-1.19	1.42	0.13	-11.47	6.9
vnjmp(dB)	-1.12	1.42	0.15	-11.50	6.8



IHOP 2002 (dual-antenna config, modes 1,3,4,7) Data (cal: 49.0,50.0)

W2002-06-22-19-16-38 - SPPMAG
 IRIG:1,UTC: 19:16:23.65 to 19:40:06.00, Dur: 1423s
 TimeLngth: 1422.36s, TimeInt: 24ms (40.5pps)
 TimeCor=-13.0s, DSPDif(mn,min,mx):24,20,339
 PPS(min,max,std): 27,42,2.74
 Prof: 361 to 57991, NumProf(t/r): 57630/27508
 ProcTime/Recs: 19:28:47-19:40:06/30122-57629
 MxACQtime: 17ms; DRate: 97.0KB/s; Flags: 0, 0, 0
 Pulse: 275ns, IFfilt: 5.0MHz; ppPol: HH
 TxPol: H, PRF: 20 kHz
 Range: Delay 75m, Spacing 15m, Gates 150
 Ave. Pulses: 348, Rng/Prof Aspect@90m/s: 6.8

	Min	Max	Mean	Std	Varc%
hhN(dB)	-67.12	-65.36	-66.19	-79.18	5.0
vvN(dB)	-66.05	-64.25	-65.11	-78.01	5.1
hhL(dB)	-16.89	-6.28	-10.41	-15.47	31.2
vhL(dB)	-23.69	-7.44	-12.73	-14.63	64.6
ppN(m/s)	-15.80	15.80	0.05	8.99	
ppT(m/s)	-0.03	0.03	-0.00	0.01	
vh/hh(dB)	-NaN	-27.27	-33.72	-33.20	112.
hnjmp(dB)	-1.19	1.42	0.13	-11.47	6.9
vnjmp(dB)	-1.12	1.42	0.15	-11.50	6.8