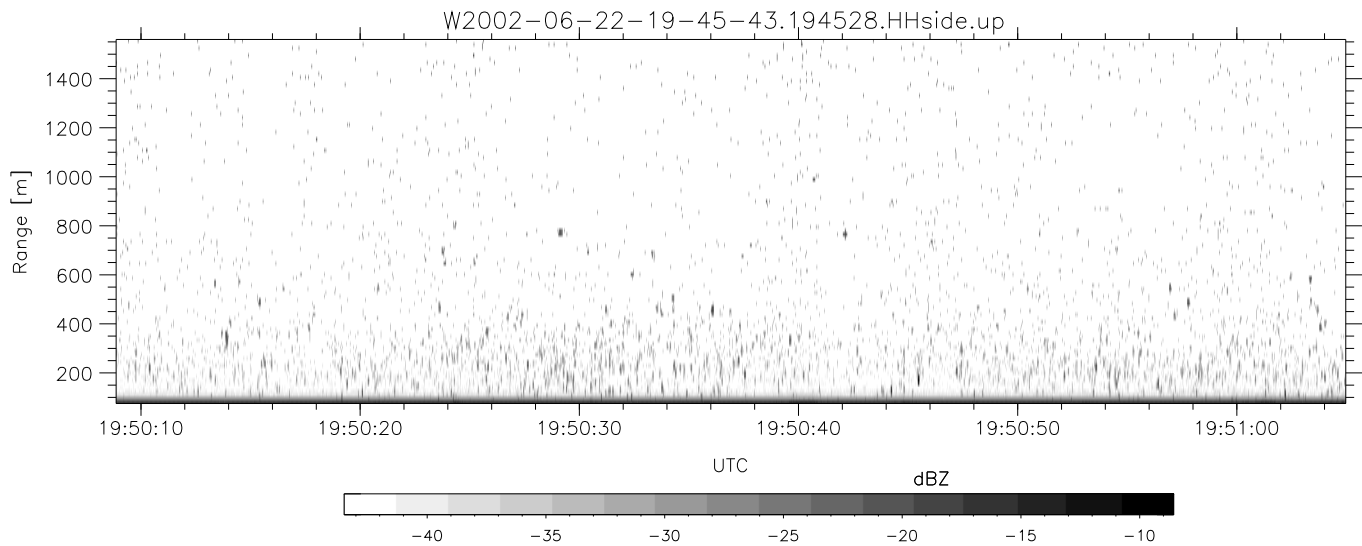
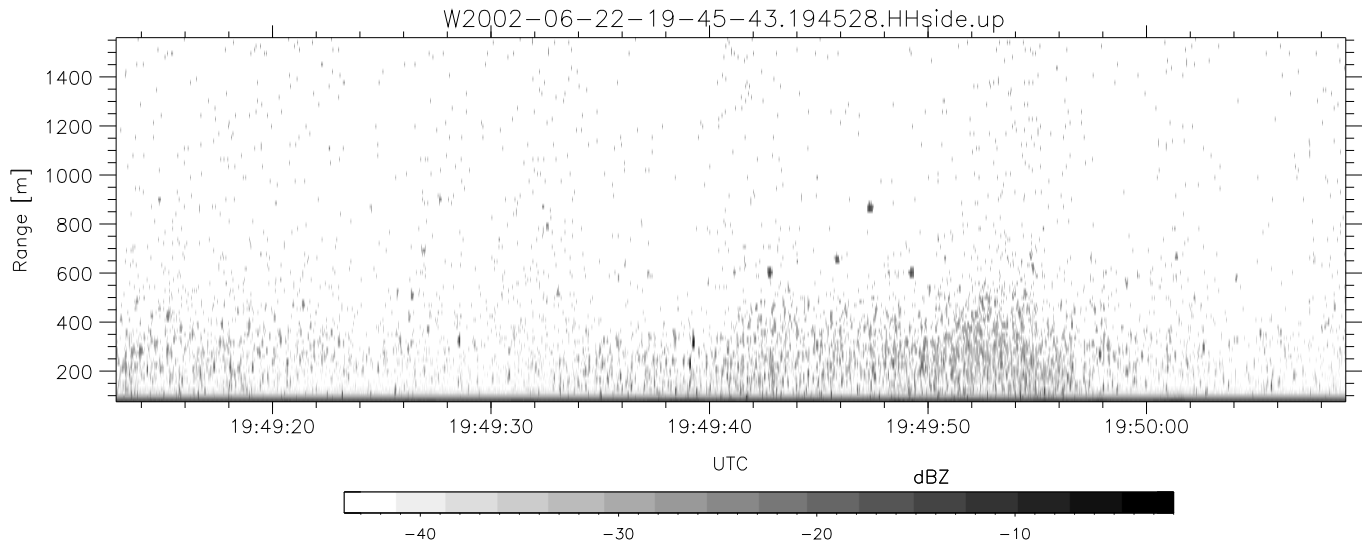
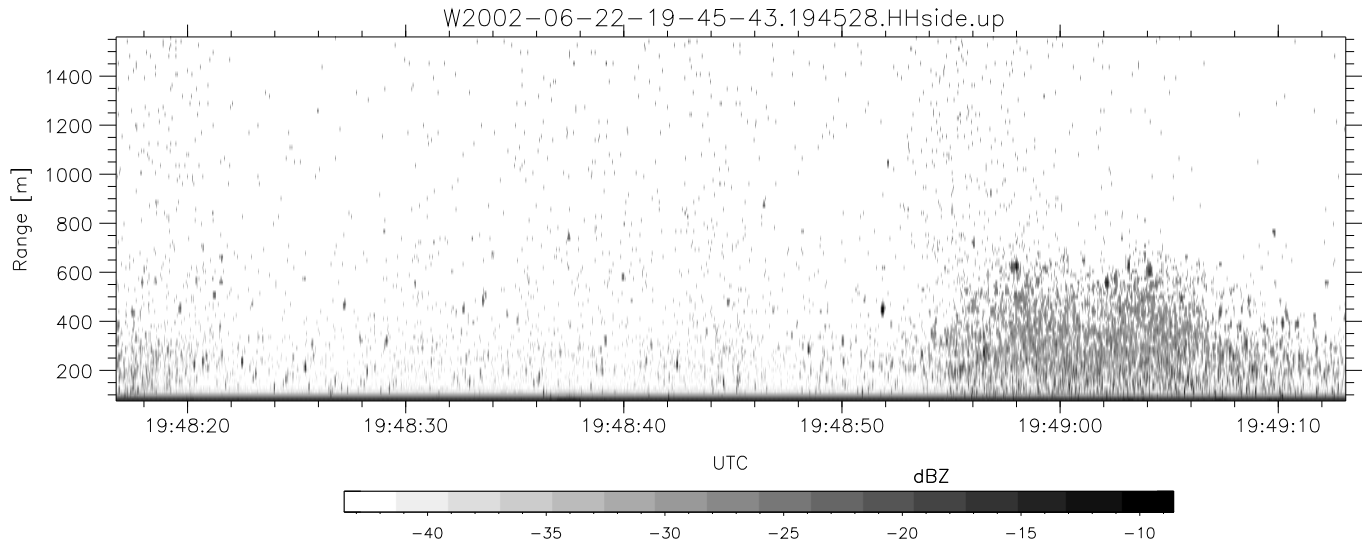


IHOP 2002 (dual-antenna config, modes 1,3,4,7) Data (cal: 49.0,50.0)

W2002-06-22-19-45-43 - PPMAG4  
 IRIG:1,UTC: 19:45:28.63 to 20:07:09.98, Dur: 1301s  
 TimeLngth: 1301.34s, TimeInt: 29ms (34.1pps)  
 TimeCor=-13.0s, DSPDif(mn,min,mx):29,28,701  
 PPS(min,max,std): 22,36,2.40  
 Prof: 377 to 44734, NumProf(t/r): 44357/17069  
 ProcTime/Recs: 19:45:28-19:53:49/0-17068  
 MxACQtime: 33ms; DRate: 190.8KB/s; Flags: 0, 0, 0  
 Pulse: 275ns, IFilt: 5.0MHz; ppPol: HH HV VV  
 TxPol: HHVV, PRF: 20 10 20 10 kHz  
 Range: Delay 75m, Spacing 15m, Gates 100  
 Ave. Pulses: 84, Rng/Prof Aspect@90m/s: 5.7

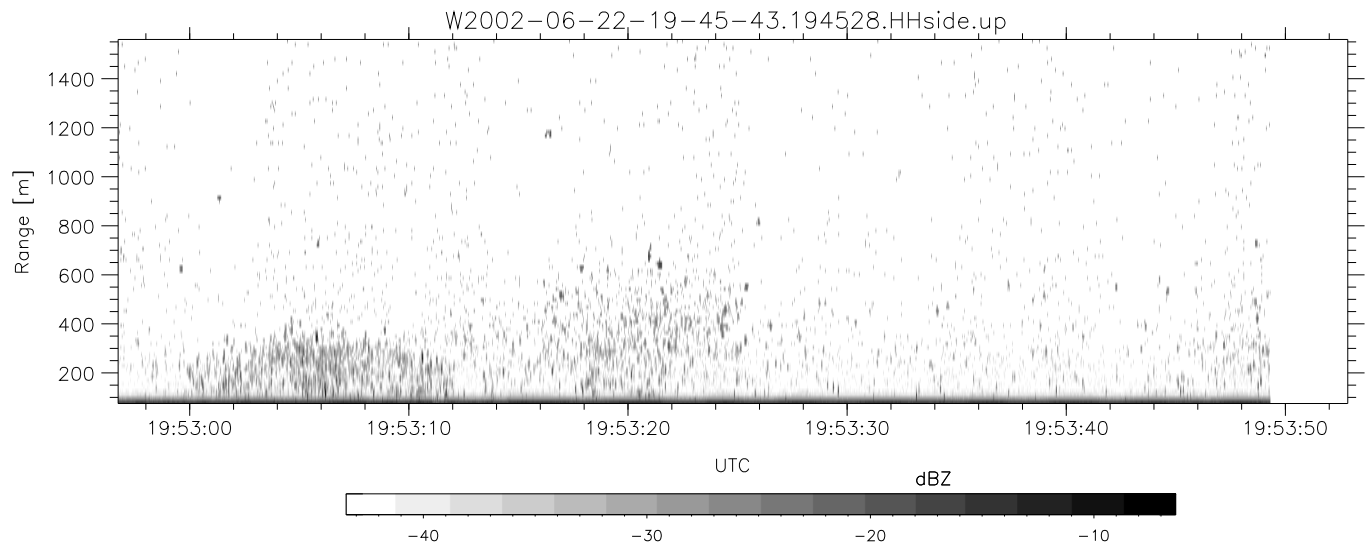
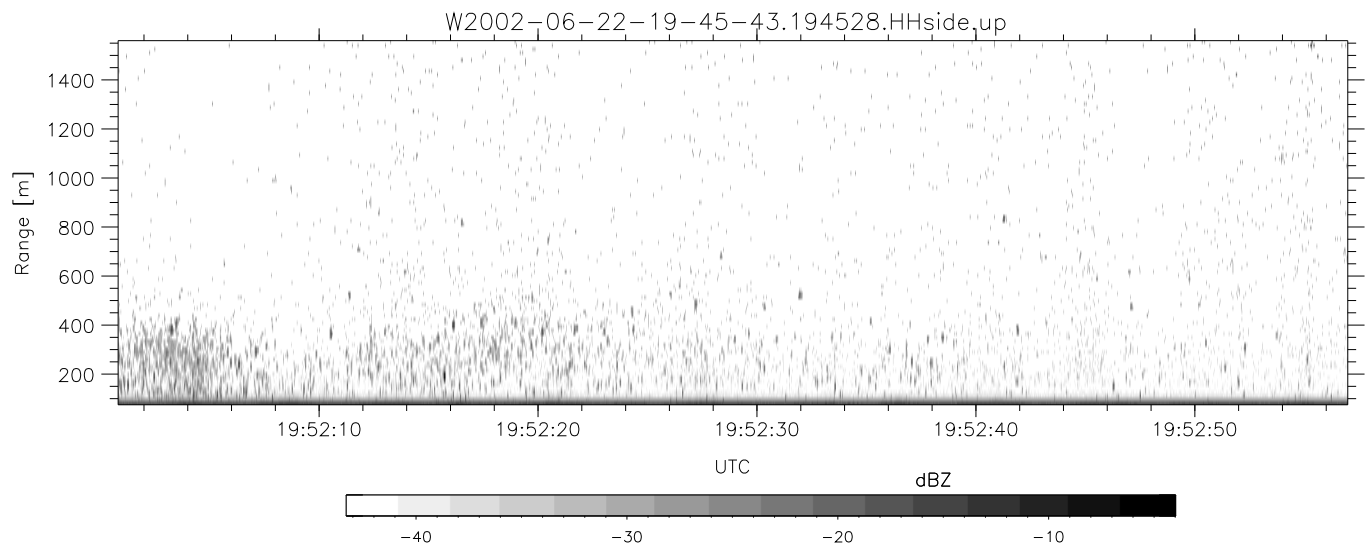
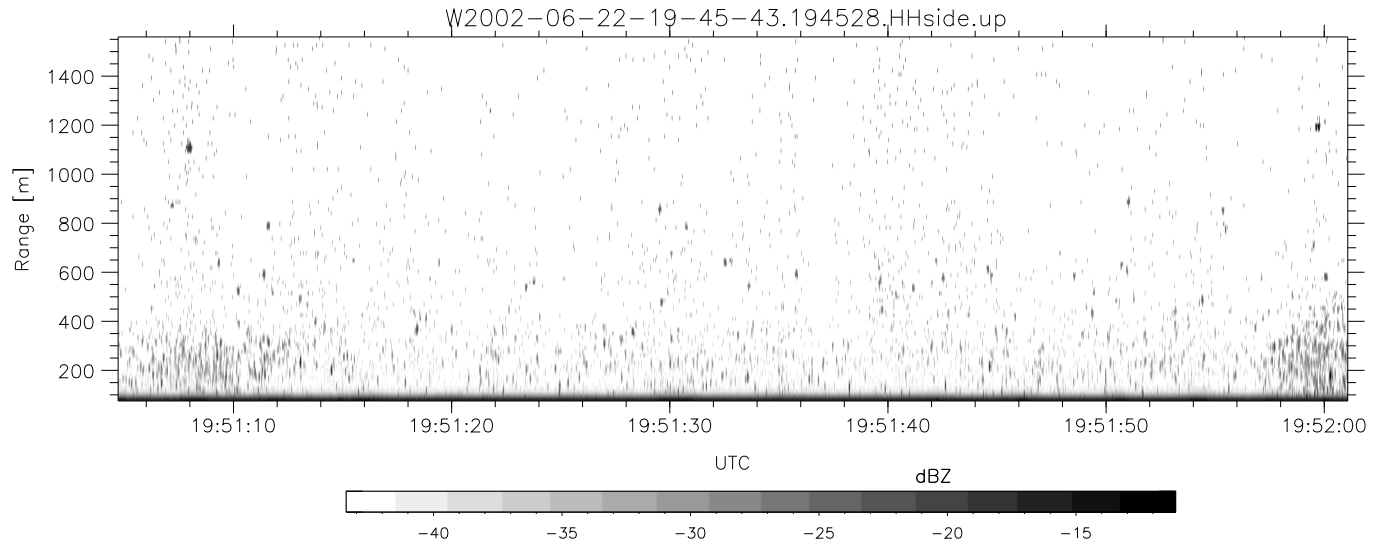
	Min	Max	Mean	Std	Varc%
hhN(dB)	-68.45	-64.72	-66.29	-76.34	9.9
vvN(dB)	-67.07	-63.62	-65.18	-75.13	10.1
hhL(dB)	-11.31	-3.11	-5.45	-13.93	14.2
vvL(dB)	-8.68	-2.12	-4.67	-11.60	20.3
ppN(m/s)	-12.39	12.38	0.02	4.18	
ppT(m/s)	-97.86	97.81	0.13	33.00	
hh/vv(dB)	-NaN	44.79	18.17	32.17	2506
vh/hh(dB)	-NaN	-33.84	-45.72	-35.55	1041
hv/vv(dB)	-NaN	-34.64	-59.71	-46.36	2163
hnjmp(dB)	-2.21	2.37	0.16	-8.41	13.9
vnjmp(dB)	-2.38	2.53	0.18	-8.30	14.2



IHOP 2002 (dual-antenna config, modes 1,3,4,7) Data (cal: 49.0,50.0)

W2002-06-22-19-45-43 - PPMAG4  
 IRIG:1,UTC: 19:45:28.63 to 20:07:09.98, Dur: 1301s  
 TimeLngth: 1301.34s, TimeInt: 29ms (34.1pps)  
 TimeCor=-13.0s, DSPDif(mn,min,mx):29,28,701  
 PPS(min,max,std): 22,36,2.40  
 Prof: 377 to 44734, NumProf(t/r): 44357/17069  
 ProcTime/Recs: 19:45:28-19:53:49/0-17068  
 MxACQtime: 33ms; DRate: 190.8KB/s; Flags: 0, 0, 0  
 Pulse: 275ns, IFfilt: 5.0MHz; ppPol: HH HV VV  
 TxPol: HHVV, PRF: 20 10 20 10 kHz  
 Range: Delay 75m, Spacing 15m, Gates 100  
 Ave. Pulses: 84, Rng/Prof Aspect@90m/s: 5.7

	Min	Max	Mean	Std	Varc%
hhN(dB)	-68.45	-64.72	-66.29	-76.34	9.9
vvN(dB)	-67.07	-63.62	-65.18	-75.13	10.1
hhL(dB)	-11.31	-3.11	-5.45	-13.93	14.2
vvL(dB)	-8.68	-2.12	-4.67	-11.60	20.3
ppN(m/s)	-12.39	12.38	0.02	4.18	
ppT(m/s)	-97.86	97.81	0.13	33.00	
hh/vv(dB)	-NaN	44.79	18.17	32.17	2506
vh/hh(dB)	-NaN	-33.84	-45.72	-35.55	1041
hv/vv(dB)	-NaN	-34.64	-59.71	-46.36	2163
hnjmp(dB)	-2.21	2.37	0.16	-8.41	13.9
vnjmp(dB)	-2.38	2.53	0.18	-8.30	14.2



IHOP 2002 (dual-antenna config, modes 1,3,4,7) Data (cal: 49.0,50.0)

W2002-06-22-19-45-43 - PPMAG4	Min	Max	Mean	Std	Varc%	
IRIG:1,UTC: 19:45:28.63 to 20:07:09.98, Dur: 1301s	hhN (dB)	-68.45	-64.72	-66.29	-76.34	9.9
TimeLngth: 1301.34s, TimeInt: 29ms (34.1pps)	vvN (dB)	-67.07	-63.62	-65.18	-75.13	10.1
TimeCor=-13.0s, DSPDif(mn,min,mx):29,28,701	hhL (dB)	-11.31	-3.11	-5.45	-13.93	14.2
PPS(min,max,std): 22,36,2.40	vvL (dB)	-8.68	-2.12	-4.67	-11.60	20.3
Prof: 377 to 44734, NumProf(t/r): 44357/17069	ppN (m/s)	-12.39	12.38	0.02	4.18	
ProcTime/Recs: 19:45:28-19:53:49/0-17068	ppT (m/s)	-97.86	97.81	0.13	33.00	
MxACQtime: 33ms; DRate: 190.8KB/s; Flags: 0, 0, 0	hh/vv (dB)	-NaN	44.79	18.17	32.17	2506
Pulse: 275ns, IFfilt: 5.0MHz; ppPol: HH HV VV	vh/hh (dB)	-NaN	-33.84	-45.72	-35.55	1041
TxPol: HHVV, PRF: 20 10 20 10 kHz	hv/vv (dB)	-NaN	-34.64	-59.71	-46.36	2163
Range: Delay 75m, Spacing 15m, Gates 100	hn/jmp (dB)	-2.21	2.37	0.16	-8.41	13.9
Ave. Pulses: 84, Rng/Prof Aspect@90m/s: 5.7	vn/jmp (dB)	-2.38	2.53	0.18	-8.30	14.2