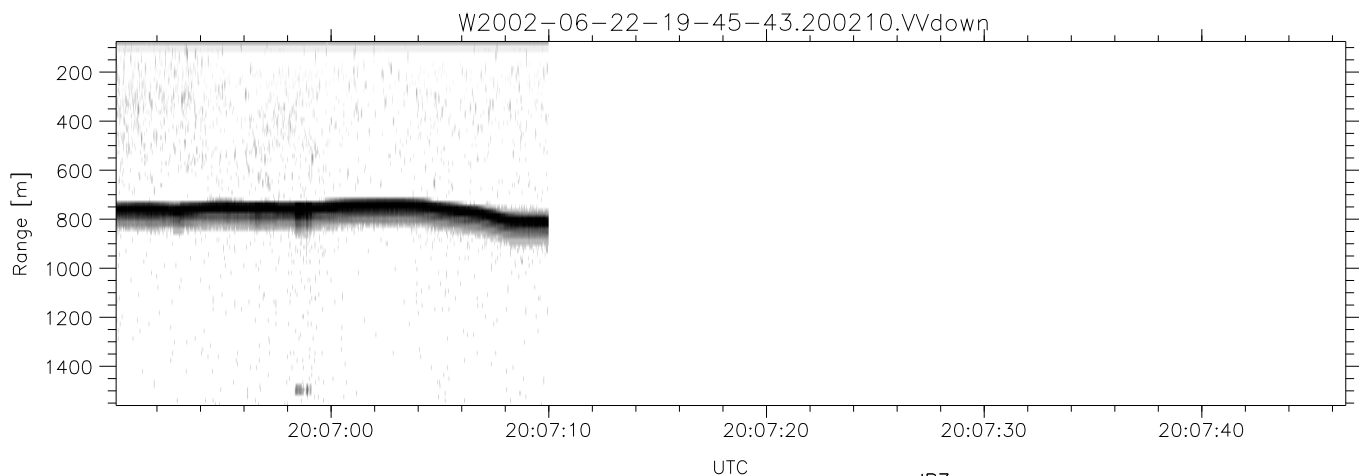
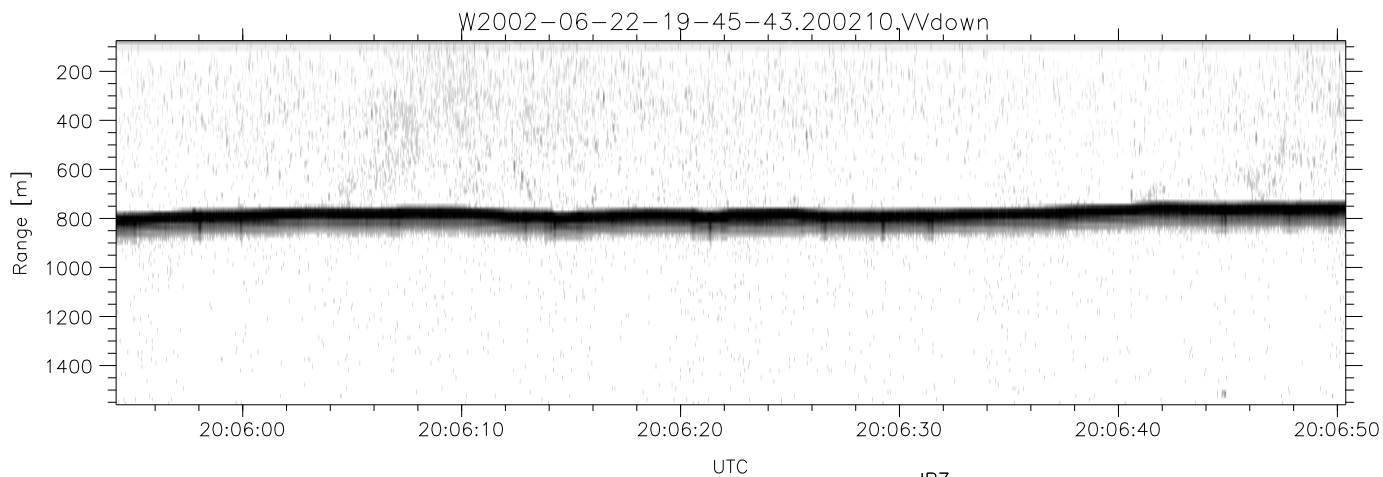
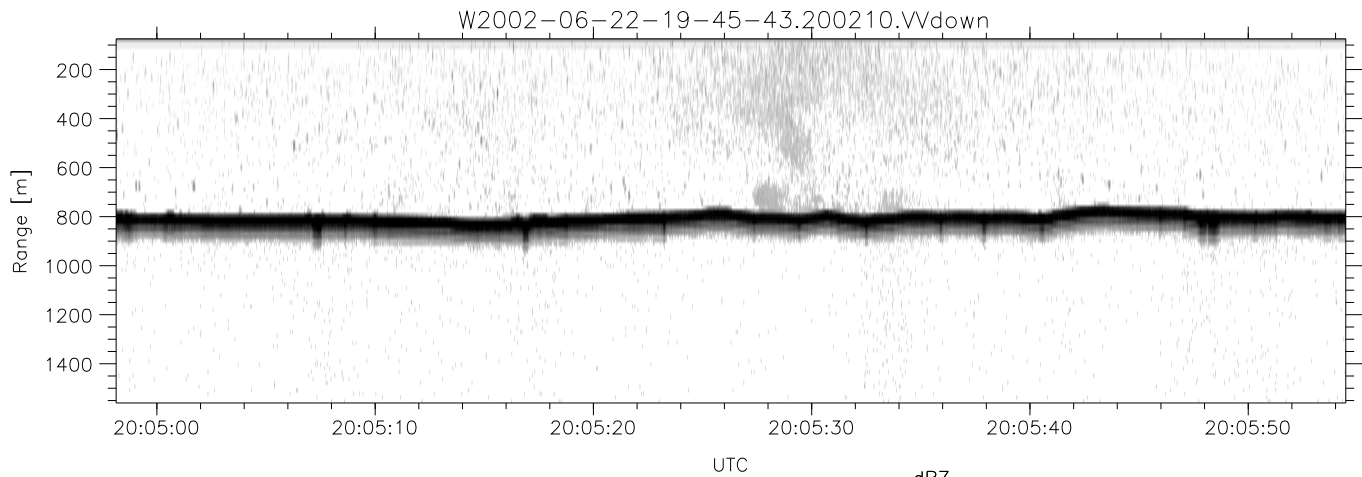


IHOP 2002 (dual-antenna config, modes 1,3,4,7) Data (cal: 49.0,50.0)

W2002-06-22-19-45-43 - PPMAG4  
 IRIG:1,UTC: 19:45:28.63 to 20:07:09.98, Dur: 1301s  
 TimeLngth: 1301.34s, TimeInt: 29ms (34.1pps)  
 TimeCor=-13.0s, DSPDif(mn,min,mx):29,28,369  
 PPS(min,max,std): 23,36,2.36  
 Prof: 377 to 44734, NumProf(t/r): 44357/10219  
 ProcTime/Recs: 20:02:10-20:07:09/34138-44356  
 MxACQtime: 33ms; DRate: 190.8KB/s; Flags: 0, 0, 0  
 Pulse: 275ns, IFilt: 5.0MHz; ppPol: HH HV VV  
 TxPol: HHVV, PRF: 20 10 20 10 kHz  
 Range: Delay 75m, Spacing 15m, Gates 100  
 Ave. Pulses: 84, Rng/Prof Aspect@90m/s: 5.7

	Min	Max	Mean	Std	Varc%
hhN(dB)	-68.05	-64.87	-66.28	-76.35	9.9
vvN(dB)	-66.76	-63.57	-65.19	-75.17	10.0
hhL(dB)	-9.11	-3.41	-5.34	-13.54	15.2
vvL(dB)	-10.32	-2.25	-4.28	-11.41	19.4
ppN(m/s)	-12.81	12.07	0.03	4.13	
ppT(m/s)	-101.2	95.39	0.24	32.67	
hh/vv(dB)	-NaN	52.19	-NaN	40.75	-166
vh/hh(dB)	-48.28	-31.20	-34.29	-35.51	75.5
hv/vv(dB)	-NaN	-35.50	-57.79	-46.50	1344
hnjmp(dB)	-2.01	2.26	0.16	-8.44	13.8
vnjmp(dB)	-2.27	2.42	0.18	-8.36	14.0



IHOP 2002 (dual-antenna config, modes 1,3,4,7) Data (cal: 49.0,50.0)

W2002-06-22-19-45-43 - PPMAG4  
 IRIG:1,UTC: 19:45:28.63 to 20:07:09.98, Dur: 1301s  
 TimeLngth: 1301.34s, TimeInt: 29ms (34.1pps)  
 TimeCor=-13.0s, DSPDif(mn,min,mx):29,28,369  
 PPS(min,max,std): 23,36,2.36  
 Prof: 377 to 44734, NumProf(t/r): 44357/10219  
 ProcTime/Recs: 20:02:10-20:07:09/34138-44356  
 MxACQtime: 33ms; DRate: 190.8KB/s; Flags: 0, 0, 0  
 Pulse: 275ns, IFfilt: 5.0MHz; ppPol: HH HV VV  
 TxPol: HHVV, PRF: 20 10 20 10 kHz  
 Range: Delay 75m, Spacing 15m, Gates 100  
 Ave. Pulses: 84, Rng/Prof Aspect@90m/s: 5.7

	Min	Max	Mean	Std	Varc%
hhN(dB)	-68.05	-64.87	-66.28	-76.35	9.9
vvN(dB)	-66.76	-63.57	-65.19	-75.17	10.0
hhL(dB)	-9.11	-3.41	-5.34	-13.54	15.2
vvL(dB)	-10.32	-2.25	-4.28	-11.41	19.4
ppN(m/s)	-12.81	12.07	0.03	4.13	
ppT(m/s)	-101.2	95.39	0.24	32.67	
hh/vv(dB)	-NaN	52.19	-NaN	40.75	-166
vh/hh(dB)	-48.28	-31.20	-34.29	-35.51	75.5
hv/vv(dB)	-NaN	-35.50	-57.79	-46.50	1344
hnjmp(dB)	-2.01	2.26	0.16	-8.44	13.8
vnjmp(dB)	-2.27	2.42	0.18	-8.36	14.0