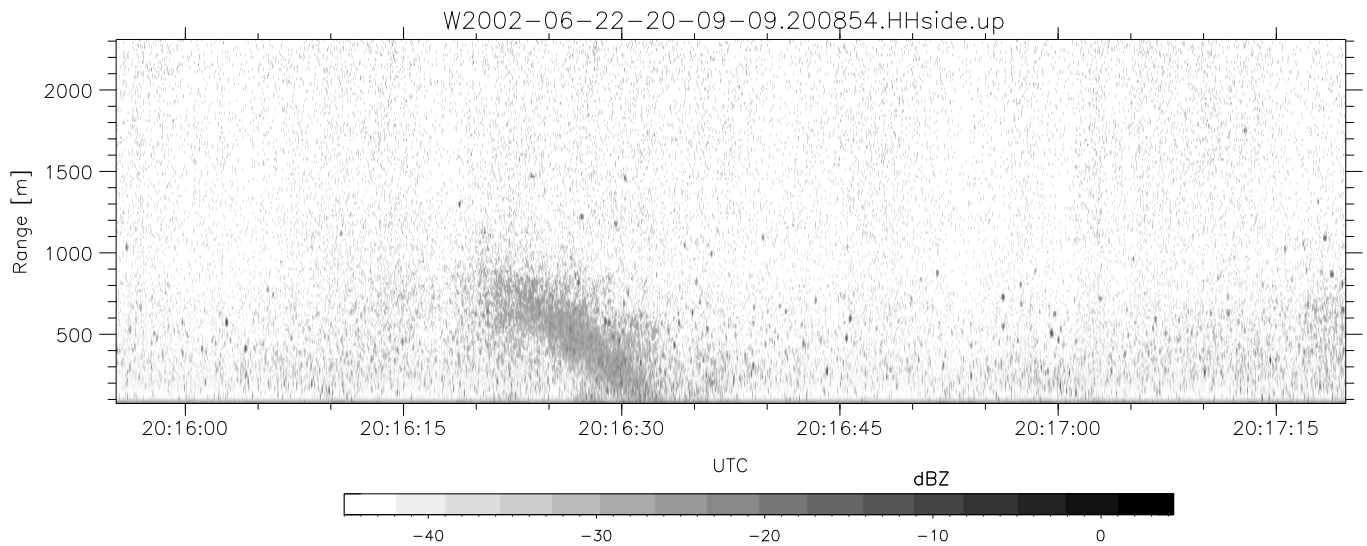
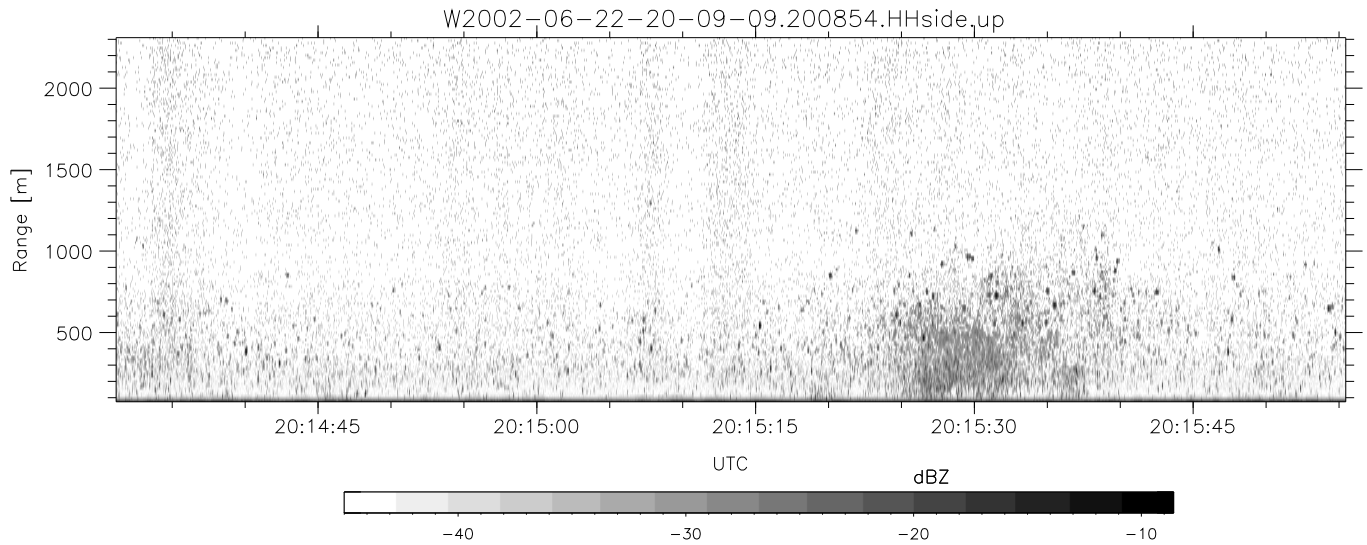
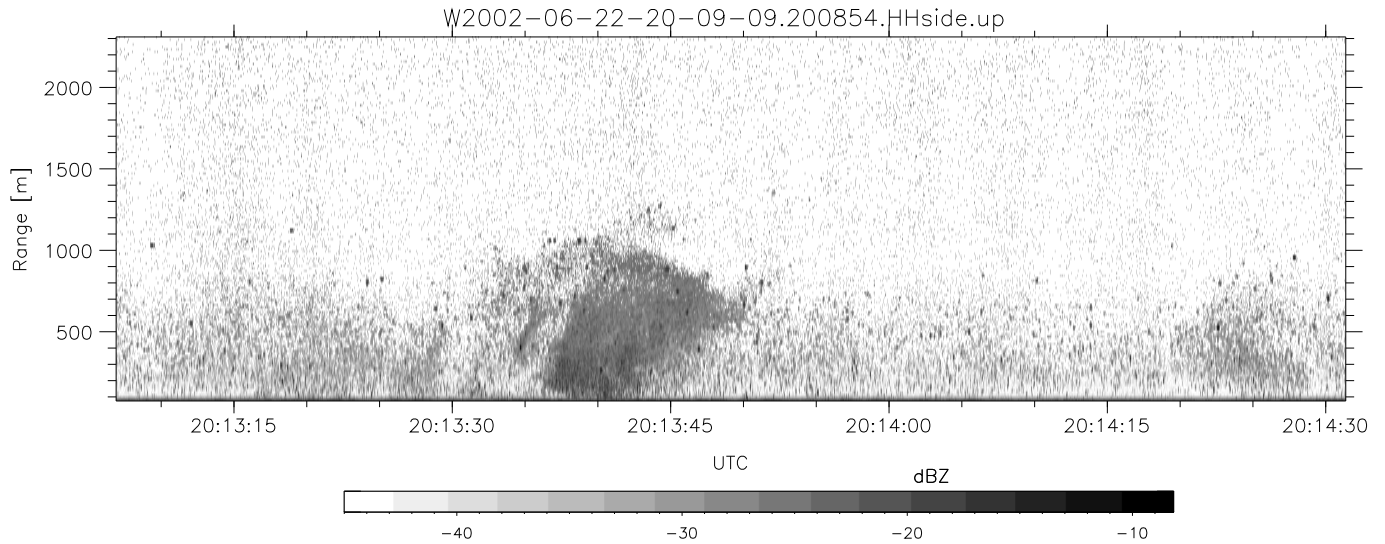


IHOP 2002 (dual-antenna config, modes 1,3,4,7) Data (cal: 49.0,50.0)

W2002-06-22-20-09-09 - SPPMAG
 IRIG:1,UTC: 20:08:54.33 to 20:20:10.98, Dur: 676s
 TimeLngth: 676.66s, TimeInt: 24ms (40.5pps)
 TimeCor=-13.0s, DSPDif(mn,min,mx):24,20,415
 PPS(min,max,std): 25,42,2.79
 Prof: 401 to 27835, NumProf(t/r): 27434/27434
 MxACQtime: 17ms; DRate: 97.1KB/s; Flags: 0, 0, 0
 Pulse: 275ns, IFfilt: 5.0MHz; ppPol: HH
 TxPol: H, PRF: 20 kHz
 Range: Delay 75m, Spacing 15m, Gates 150
 Ave. Pulses: 348, Rng/Prof Aspect@90m/s: 6.8

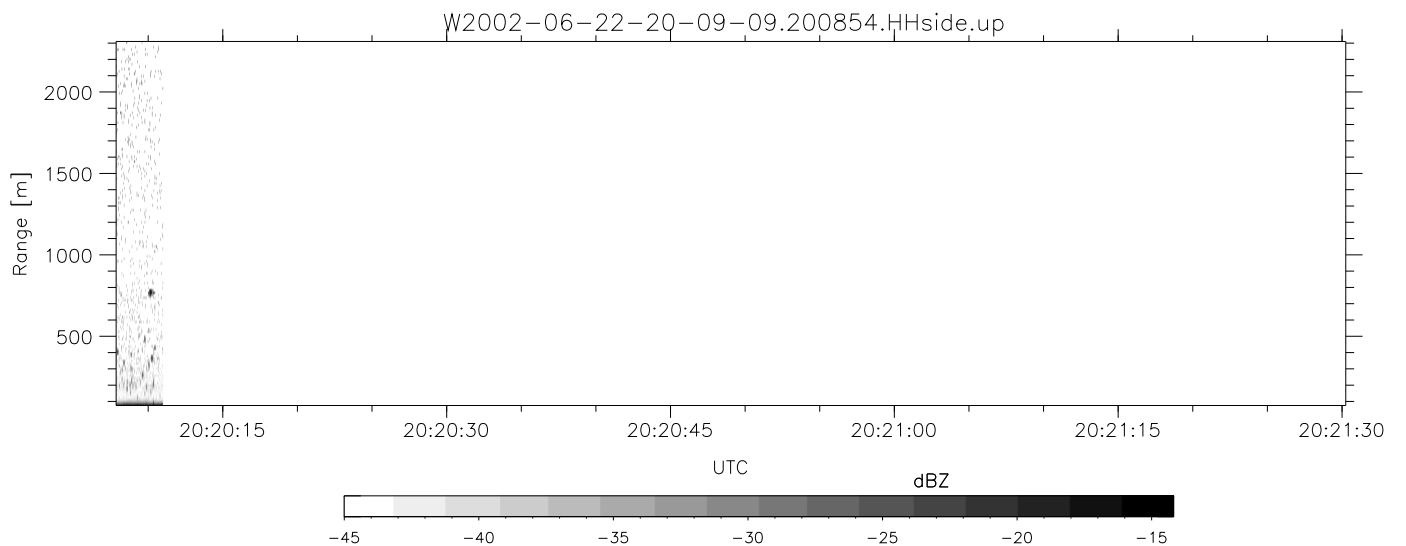
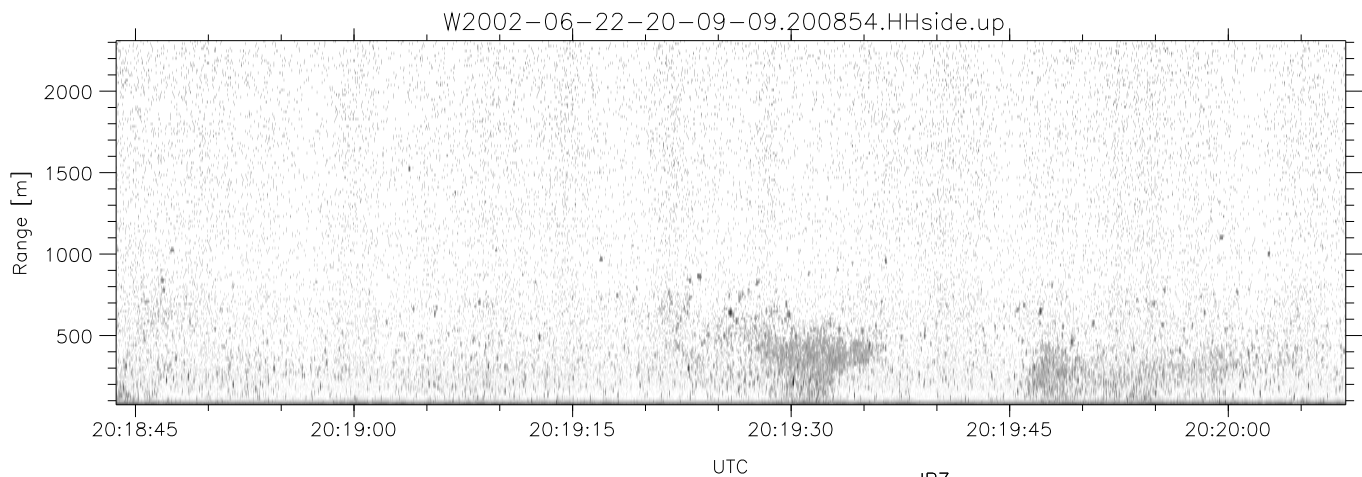
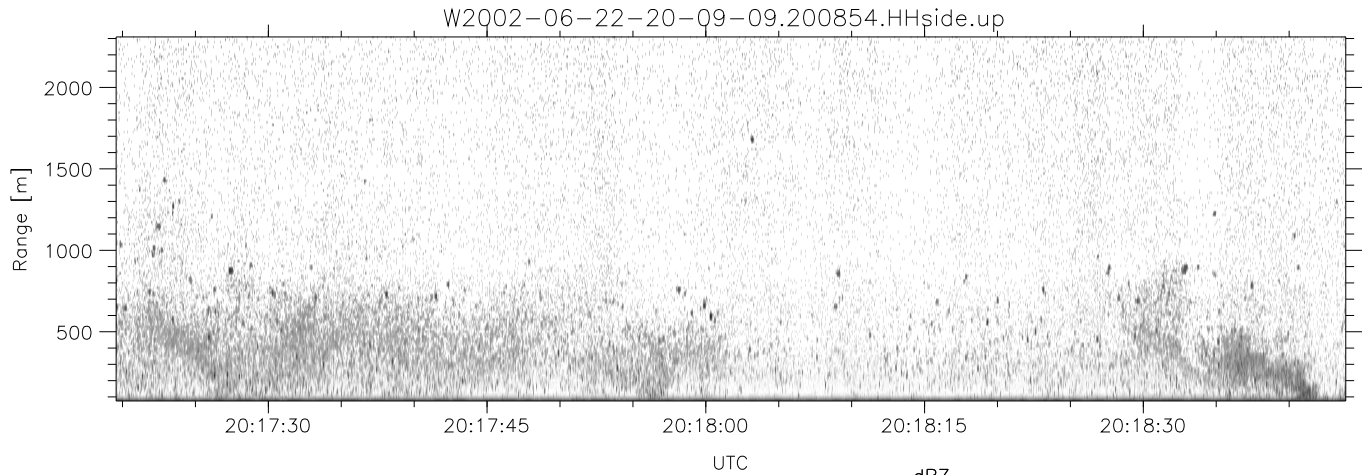
	Min	Max	Mean	Std	Varc%
hhN(dB)	-67.11	-65.43	-66.26	-79.27	5.0
vvN(dB)	-66.10	-64.40	-65.20	-78.11	5.1
hhL(dB)	-18.42	-6.27	-9.79	-16.12	23.3
vhL(dB)	-21.06	-6.71	-11.90	-14.57	54.1
ppN(m/s)	-15.80	15.80	-0.05	9.01	
ppT(m/s)	-0.03	0.03	-0.00	0.01	
vh/hh(dB)	-NaN	-20.15	-29.96	-27.75	166.
hnjmp(dB)	-1.05	1.24	0.12	-11.55	6.8
vnjmp(dB)	-1.00	1.20	0.15	-11.50	6.8



IHOP 2002 (dual-antenna config, modes 1,3,4,7) Data (cal: 49.0,50.0)

W2002-06-22-20-09-09 - SPPMAG
 IRIG:1,UTC: 20:08:54.33 to 20:20:10.98, Dur: 676s
 TimeLngth: 676.66s, TimeInt: 24ms (40.5pps)
 TimeCor=-13.0s, DSPDif(mn,min,mx):24,20,415
 PPS(min,max,std): 25,42,2.79
 Prof: 401 to 27835, NumProf(t/r): 27434/27434
 MxACQtime: 17ms; DRate: 97.1KB/s; Flags: 0, 0, 0
 Pulse: 275ns, IFfilt: 5.0MHz; ppPol: HH
 TxPol: H, PRF: 20 kHz
 Range: Delay 75m, Spacing 15m, Gates 150
 Ave. Pulses: 348, Rng/Prof Aspect@90m/s: 6.8

	Min	Max	Mean	Std	Varc%
hhN(dB)	-67.11	-65.43	-66.26	-79.27	5.0
vvN(dB)	-66.10	-64.40	-65.20	-78.11	5.1
hhL(dB)	-18.42	-6.27	-9.79	-16.12	23.3
vhL(dB)	-21.06	-6.71	-11.90	-14.57	54.1
ppN(m/s)	-15.80	15.80	-0.05	9.01	
ppT(m/s)	-0.03	0.03	-0.00	0.01	
vh/hh(dB)	-NaN	-20.15	-29.96	-27.75	166.
hnjmp(dB)	-1.05	1.24	0.12	-11.55	6.8
vnjmp(dB)	-1.00	1.20	0.15	-11.50	6.8



IHOP 2002 (dual-antenna config, modes 1,3,4,7) Data (cal: 49.0,50.0)

W2002-06-22-20-09-09 - SPPMAG
 IRIG:1,UTC: 20:08:54.33 to 20:20:10.98, Dur: 676s
 TimeLngth: 676.66s, TimeInt: 24ms (40.5pps)
 TimeCor=-13.0s, DSPDif(mn,min,mx):24,20,415
 PPS(min,max,std): 25,42,2.79
 Prof: 401 to 27835, NumProf(t/r): 27434/27434
 MxACQtime: 17ms; DRate: 97.1KB/s; Flags: 0, 0, 0
 Pulse: 275ns, IFfilt: 5.0MHz; ppPol: HH
 TxPol: H, PRF: 20 kHz
 Range: Delay 75m, Spacing 15m, Gates 150
 Ave. Pulses: 348, Rng/Prof Aspect@90m/s: 6.8

	Min	Max	Mean	Std	Varc%
hhN(dB)	-67.11	-65.43	-66.26	-79.27	5.0
vvN(dB)	-66.10	-64.40	-65.20	-78.11	5.1
hhL(dB)	-18.42	-6.27	-9.79	-16.12	23.3
vhL(dB)	-21.06	-6.71	-11.90	-14.57	54.1
ppN(m/s)	-15.80	15.80	-0.05	9.01	
ppT(m/s)	-0.03	0.03	-0.00	0.01	
vh/hh(dB)	-NaN	-20.15	-29.96	-27.75	166.
hnjmp(dB)	-1.05	1.24	0.12	-11.55	6.8
vnjmp(dB)	-1.00	1.20	0.15	-11.50	6.8