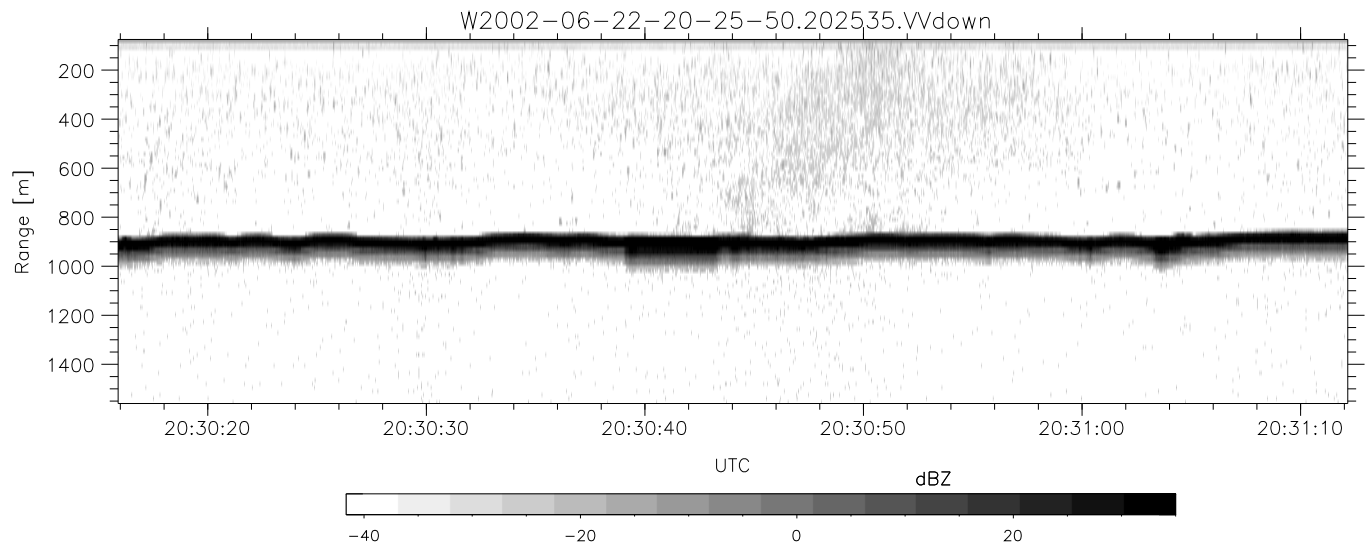
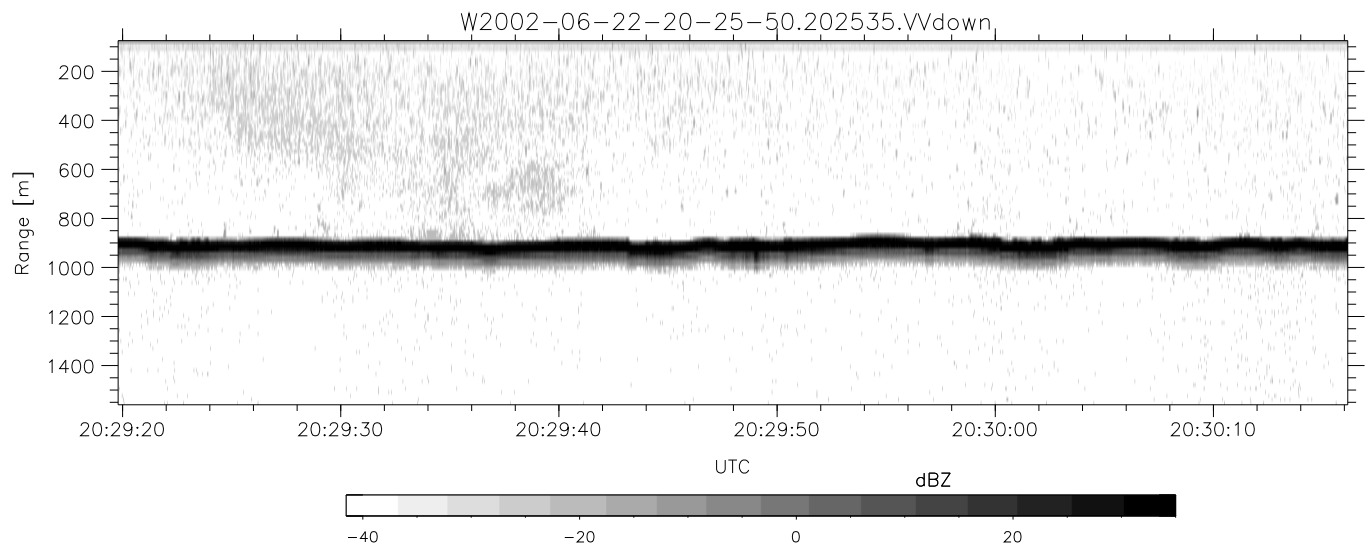
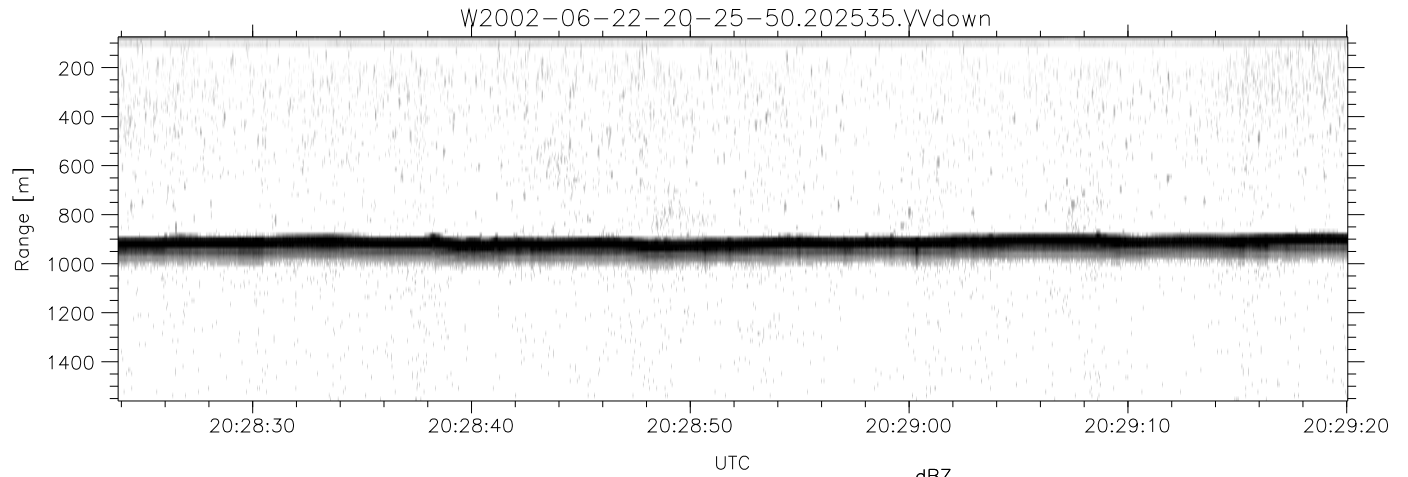


IHOP 2002 (dual-antenna config, modes 1,3,4,7) Data (cal: 49.0,50.0)

W2002-06-22-20-25-50 - PPMAG4
 IRIG:1,UTC: 20:25:35.62 to 20:36:59.40, Dur: 684s
 TimeLngth: 683.78s, TimeInt: 29ms (34.1pps)
 TimeCor=-13.0s, DSPDif(mn,min,mx):29,28,762
 PPS(min,max,std): 9,36,2.53
 Prof: 359 to 23665, NumProf(t/r): 23306/17069
 ProcTime/Recs: 20:25:35-20:33:56/0-17068
 MxACQtime: 33ms; DRate: 190.8KB/s; Flags: 0, 0, 0
 Pulse: 275ns, IFfilt: 5.0MHz; ppPol: HH HV VV
 TxPol: HHVV, PRF: 20 10 20 10 kHz
 Range: Delay 75m, Spacing 15m, Gates 100
 Ave. Pulses: 84, Rng/Prof Aspect@90m/s: 5.7

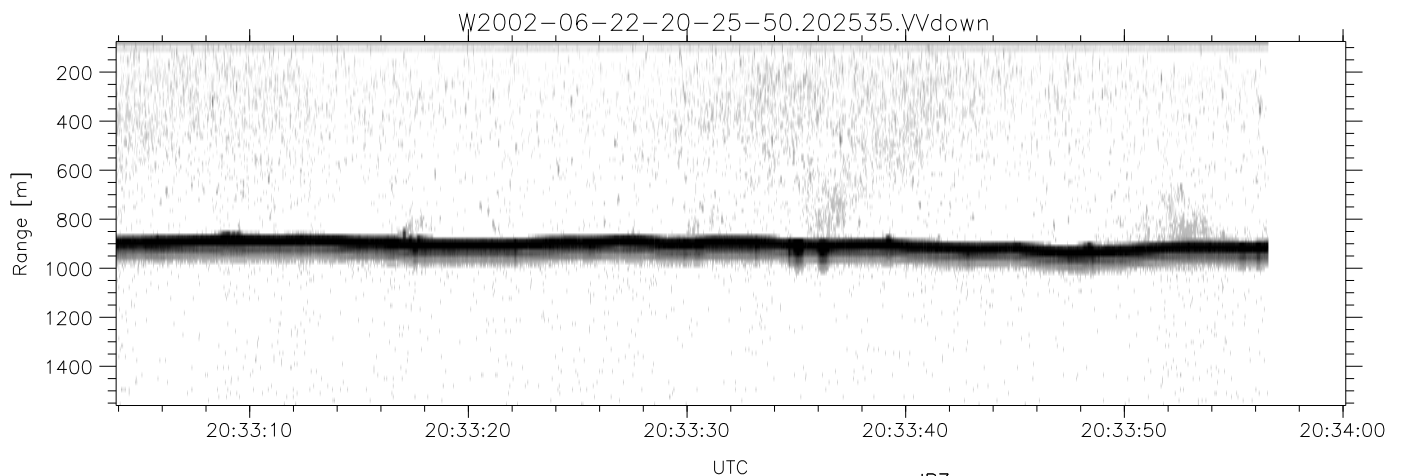
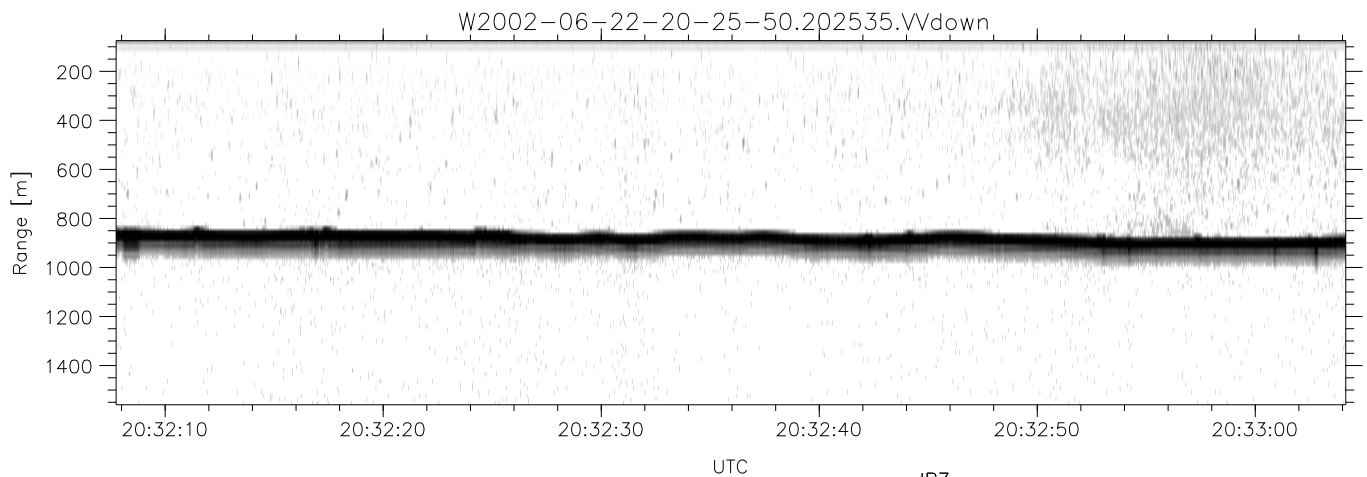
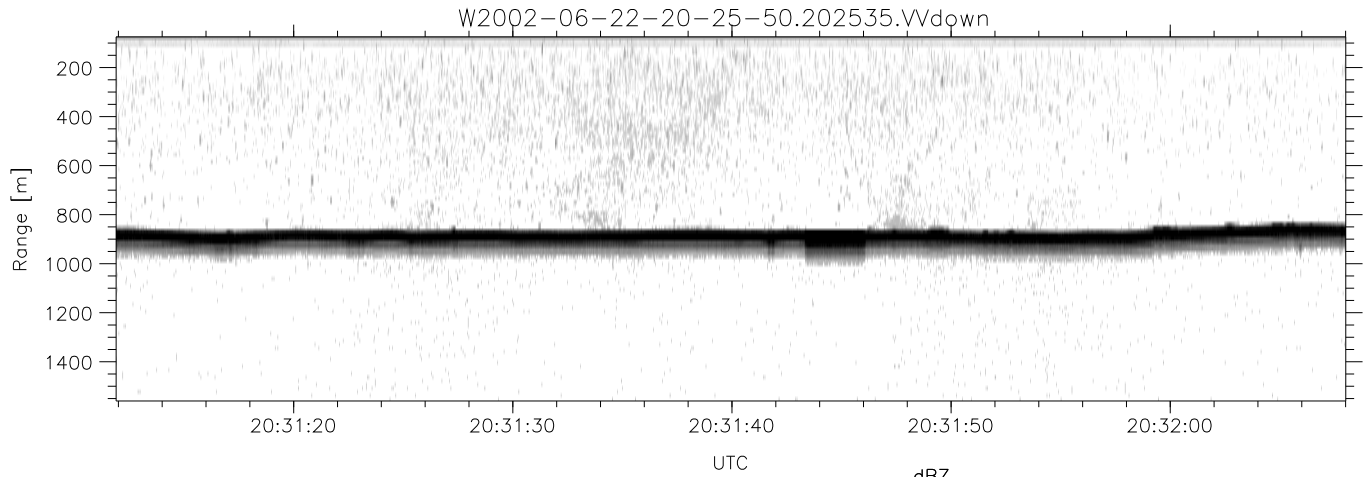
	Min	Max	Mean	Std	Varc%
hhN(dB)	-68.30	-64.78	-66.31	-76.38	9.9
vvN(dB)	-67.10	-63.55	-65.21	-75.18	10.1
hhL(dB)	-8.37	-3.09	-4.39	-12.52	15.4
vvL(dB)	-12.53	-2.36	-3.81	-11.24	18.0
ppN(m/s)	-12.24	12.65	0.06	4.17	
ppT(m/s)	-96.66	99.93	0.45	32.93	
hh/vv(dB)	-NaN	47.36	7.04	35.97	7814
vh/hh(dB)	-NaN	-30.05	-36.38	-35.12	133.
hv/vv(dB)	-NaN	-34.60	-62.06	-46.70	3435
hnjmp(dB)	-2.15	2.38	0.15	-8.40	13.9
vnjmp(dB)	-2.10	2.70	0.18	-8.27	14.3



IHOP 2002 (dual-antenna config, modes 1,3,4,7) Data (cal: 49.0,50.0)

W2002-06-22-20-25-50 - PPMAG4
 IRIG:1,UTC: 20:25:35.62 to 20:36:59.40, Dur: 684s
 TimeLngth: 683.78s, TimeInt: 29ms (34.1pps)
 TimeCor=-13.0s, DSPDif(mn,min,mx):29,28,762
 PPS(min,max,std): 9,36,2.53
 Prof: 359 to 23665, NumProf(t/r): 23306/17069
 ProcTime/Recs: 20:25:35-20:33:56/0-17068
 MxACQtime: 33ms; DRate: 190.8KB/s; Flags: 0, 0, 0
 Pulse: 275ns, IFilt: 5.0MHz; ppPol: HH HV VV
 TxPol: HHVV, PRF: 20 10 20 10 kHz
 Range: Delay 75m, Spacing 15m, Gates 100
 Ave. Pulses: 84, Rng/Prof Aspect@90m/s: 5.7

	Min	Max	Mean	Std	Varc%
hhN(dB)	-68.30	-64.78	-66.31	-76.38	9.9
vvN(dB)	-67.10	-63.55	-65.21	-75.18	10.1
hhL(dB)	-8.37	-3.09	-4.39	-12.52	15.4
vvL(dB)	-12.53	-2.36	-3.81	-11.24	18.0
ppN(m/s)	-12.24	12.65	0.06	4.17	
ppT(m/s)	-96.66	99.93	0.45	32.93	
hh/vv(dB)	-NaN	47.36	7.04	35.97	7814
vh/hh(dB)	-NaN	-30.05	-36.38	-35.12	133.
hv/vv(dB)	-NaN	-34.60	-62.06	-46.70	3435
hnjmp(dB)	-2.15	2.38	0.15	-8.40	13.9
vnjmp(dB)	-2.10	2.70	0.18	-8.27	14.3



IHOP 2002 (dual-antenna config, modes 1,3,4,7) Data (cal: 49.0,50.0)

W2002-06-22-20-25-50 - PPMAG4
 IRIG:1,UTC: 20:25:35.62 to 20:36:59.40, Dur: 684s
 TimeLngth: 683.78s, TimeInt: 29ms (34.1pps)
 TimeCor=-13.0s, DSPDif(mn,min,mx):29,28,762
 PPS(min,max,std): 9,36,2.53
 Prof: 359 to 23665, NumProf(t/r): 23306/17069
 ProcTime/Recs: 20:25:35-20:33:56/0-17068
 MxACQtime: 33ms; DRate: 190.8KB/s; Flags: 0, 0, 0
 Pulse: 275ns, IFfilt: 5.0MHz; ppPol: HH HV VV
 TxPol: HHVV, PRF: 20 10 20 10 kHz
 Range: Delay 75m, Spacing 15m, Gates 100
 Ave. Pulses: 84, Rng/Prof Aspect@90m/s: 5.7

	Min	Max	Mean	Std	Varc%
hhN(dB)	-68.30	-64.78	-66.31	-76.38	9.9
vvN(dB)	-67.10	-63.55	-65.21	-75.18	10.1
hhL(dB)	-8.37	-3.09	-4.39	-12.52	15.4
vvL(dB)	-12.53	-2.36	-3.81	-11.24	18.0
ppN(m/s)	-12.24	12.65	0.06	4.17	
ppT(m/s)	-96.66	99.93	0.45	32.93	
hh/vv(dB)	-NaN	47.36	7.04	35.97	7814
vh/hh(dB)	-NaN	-30.05	-36.38	-35.12	133.
hv/vv(dB)	-NaN	-34.60	-62.06	-46.70	3435
hnjmp(dB)	-2.15	2.38	0.15	-8.40	13.9
vnjmp(dB)	-2.10	2.70	0.18	-8.27	14.3