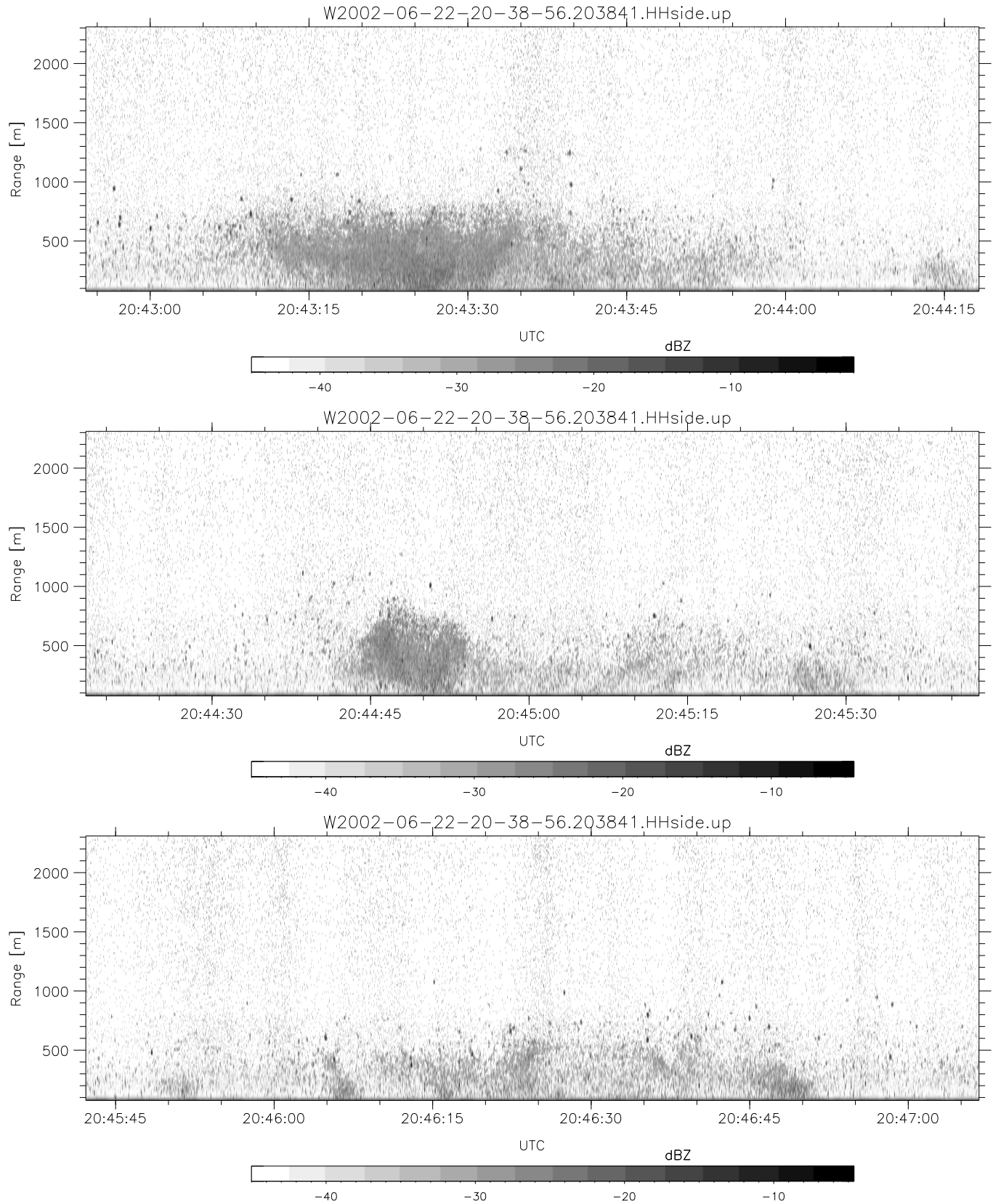


IHOP 2002 (dual-antenna config, modes 1,3,4,7) Data (cal: 49.0,50.0)

W2002-06-22-20-38-56 - SPPMAG  
 IRIG:1,UTC: 20:38:41.31 to 21:03:58.10, Dur: 1517s  
 TimeLngth: 1516.79s, TimeInt: 24ms (40.6pps)  
 TimeCor=-13.0s, DSPDif(mn,min,mx):24,20,582  
 PPS(min,max,std): 23,42,2.74  
 Prof: 420 to 61927, NumProf(t/r): 61507/30122  
 ProcTime/Recs: 20:38:41-20:51:03/0-30121  
 MxACQtime: 17ms; DRate: 97.1KB/s; Flags: 0, 0, 0  
 Pulse: 275ns, IFfilt: 5.0MHz; ppPol: HH  
 TxPol: H, PRF: 20 kHz  
 Range: Delay 75m, Spacing 15m, Gates 150  
 Ave. Pulses: 348, Rng/Prof Aspect@90m/s: 6.8

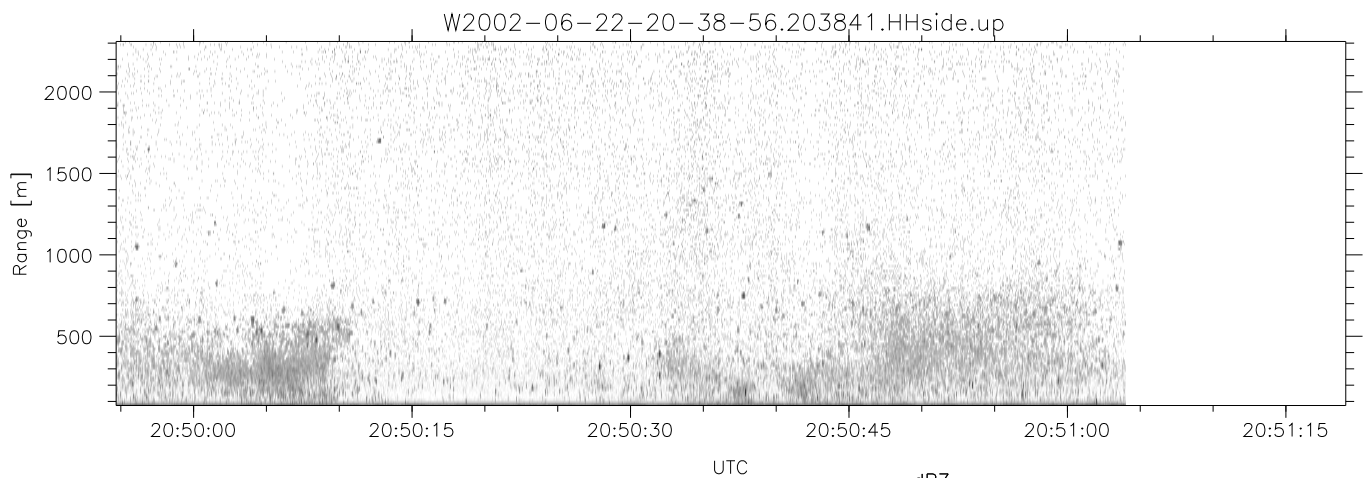
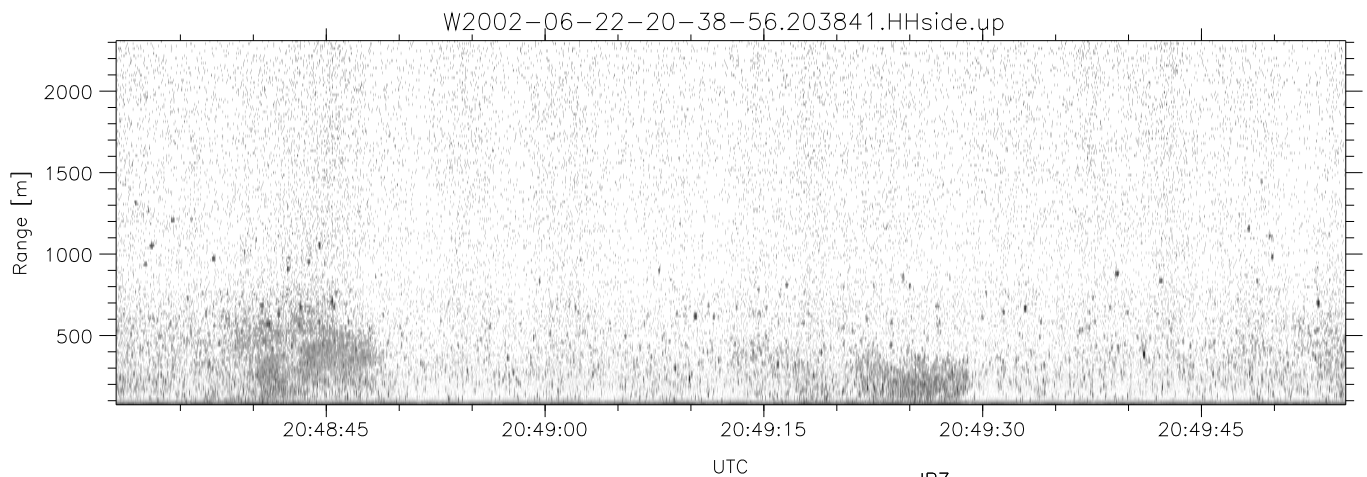
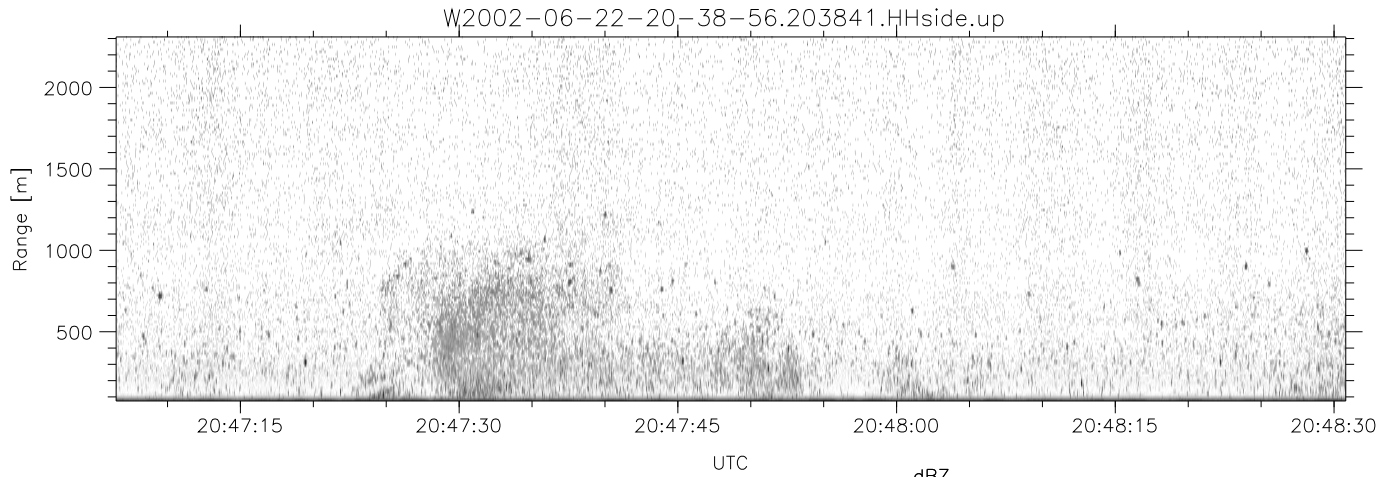
	Min	Max	Mean	Std	Varc%
hhN(dB)	-67.29	-65.37	-66.25	-79.24	5.0
vvN(dB)	-66.11	-64.27	-65.20	-78.10	5.1
hhL(dB)	-13.84	-5.94	-9.06	-14.74	27.0
vhL(dB)	-21.61	-6.08	-12.11	-14.19	62.0
ppN(m/s)	-15.80	15.80	0.10	9.02	
ppT(m/s)	-0.03	0.02	-0.00	0.01	
vh/hh(dB)	-NaN	-25.19	-33.97	-32.03	156.
hnjmp(dB)	-1.28	1.03	-0.10	-11.72	6.9
vnjmp(dB)	-1.31	1.02	-0.13	-11.69	7.0



IHOP 2002 (dual-antenna config, modes 1,3,4,7) Data (cal: 49.0,50.0)

W2002-06-22-20-38-56 - SPPMAG  
 IRIG:1,UTC: 20:38:41.31 to 21:03:58.10, Dur: 1517s  
 TimeLngth: 1516.79s, TimeInt: 24ms (40.6pps)  
 TimeCor=-13.0s, DSPDif(mn,min,mx):24,20,582  
 PPS(min,max,std): 23,42,2.74  
 Prof: 420 to 61927, NumProf(t/r): 61507/30122  
 ProcTime/Recs: 20:38:41-20:51:03/0-30121  
 MxACQtime: 17ms; DRate: 97.1KB/s; Flags: 0, 0, 0  
 Pulse: 275ns, IFfilt: 5.0MHz; ppPol: HH  
 TxPol: H, PRF: 20 kHz  
 Range: Delay 75m, Spacing 15m, Gates 150  
 Ave. Pulses: 348, Rng/Prof Aspect@90m/s: 6.8

	Min	Max	Mean	Std	Varc%
hhN(dB)	-67.29	-65.37	-66.25	-79.24	5.0
vvN(dB)	-66.11	-64.27	-65.20	-78.10	5.1
hhL(dB)	-13.84	-5.94	-9.06	-14.74	27.0
vhL(dB)	-21.61	-6.08	-12.11	-14.19	62.0
ppN(m/s)	-15.80	15.80	0.10	9.02	
ppT(m/s)	-0.03	0.02	-0.00	0.01	
vh/hh(dB)	-NaN	-25.19	-33.97	-32.03	156.
hnjmp(dB)	-1.28	1.03	-0.10	-11.72	6.9
vnjmp(dB)	-1.31	1.02	-0.13	-11.69	7.0



IHOP 2002 (dual-antenna config, modes 1,3,4,7) Data (cal: 49.0,50.0)

W2002-06-22-20-38-56 - SPPMAG  
 IRIG:1,UTC: 20:38:41.31 to 21:03:58.10, Dur: 1517s  
 TimeLngth: 1516.79s, TimeInt: 24ms (40.6pps)  
 TimeCor=-13.0s, DSPDif(mn,min,mx):24,20,582  
 PPS(min,max,std): 23,42,2.74  
 Prof: 420 to 61927, NumProf(t/r): 61507/30122  
 ProcTime/Recs: 20:38:41-20:51:03/0-30121  
 MxACQtime: 17ms; DRate: 97.1KB/s; Flags: 0, 0, 0  
 Pulse: 275ns, IFfilt: 5.0MHz; ppPol: HH  
 TxPol: H, PRF: 20 kHz  
 Range: Delay 75m, Spacing 15m, Gates 150  
 Ave. Pulses: 348, Rng/Prof Aspect@90m/s: 6.8

	Min	Max	Mean	Std	Varc%
hhN (dB)	-67.29	-65.37	-66.25	-79.24	5.0
vvN (dB)	-66.11	-64.27	-65.20	-78.10	5.1
hhL (dB)	-13.84	-5.94	-9.06	-14.74	27.0
vhL (dB)	-21.61	-6.08	-12.11	-14.19	62.0
ppN (m/s)	-15.80	15.80	0.10	9.02	
ppT (m/s)	-0.03	0.02	-0.00	0.01	
vh/hh (dB)	-NaN	-25.19	-33.97	-32.03	156.
hnjmp (dB)	-1.28	1.03	-0.10	-11.72	6.9
vnjmp (dB)	-1.31	1.02	-0.13	-11.69	7.0