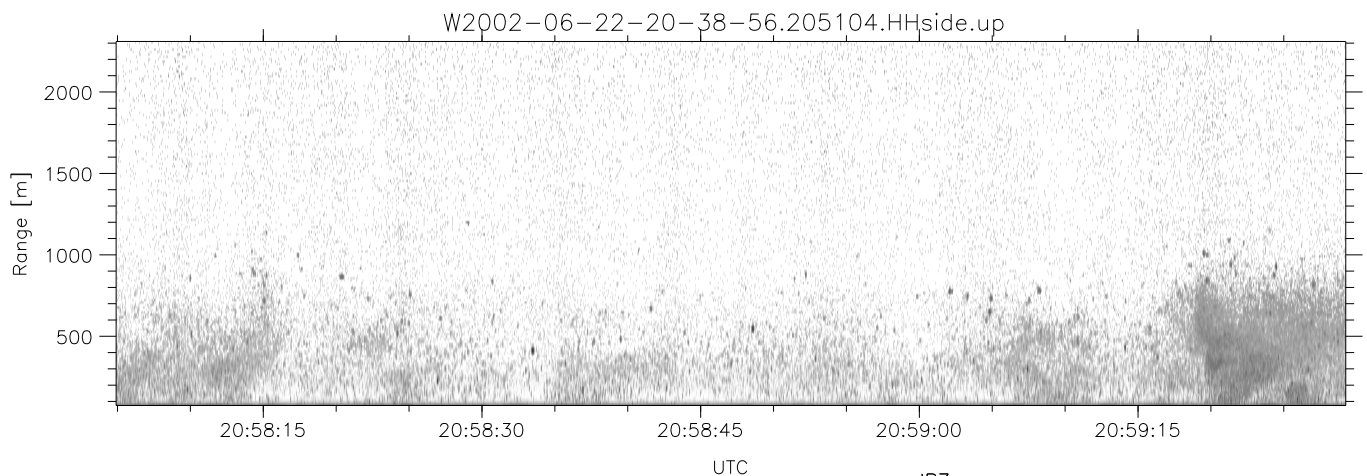
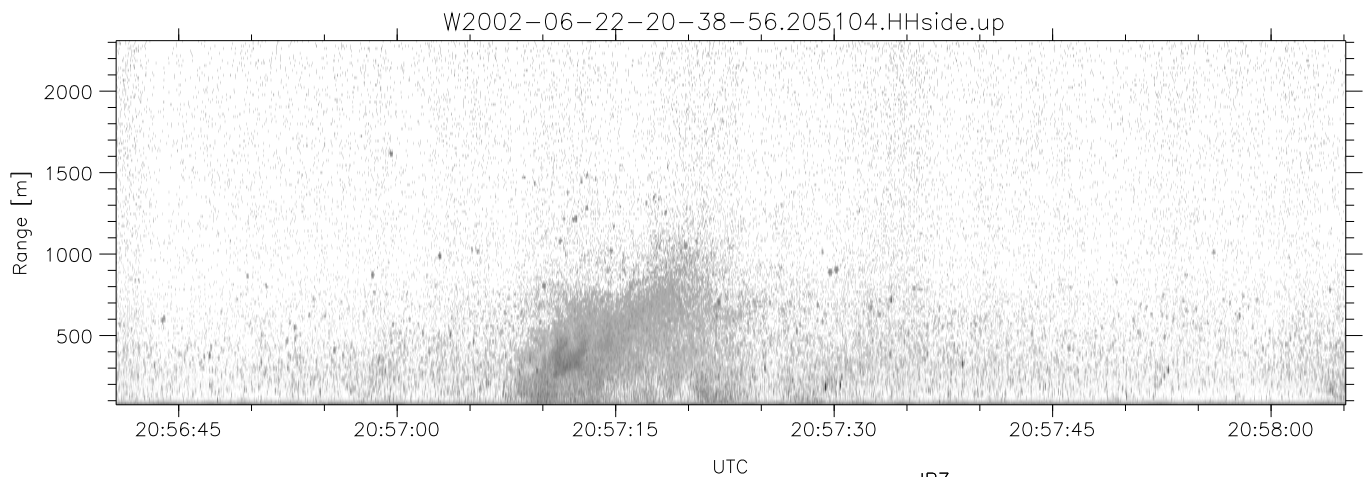
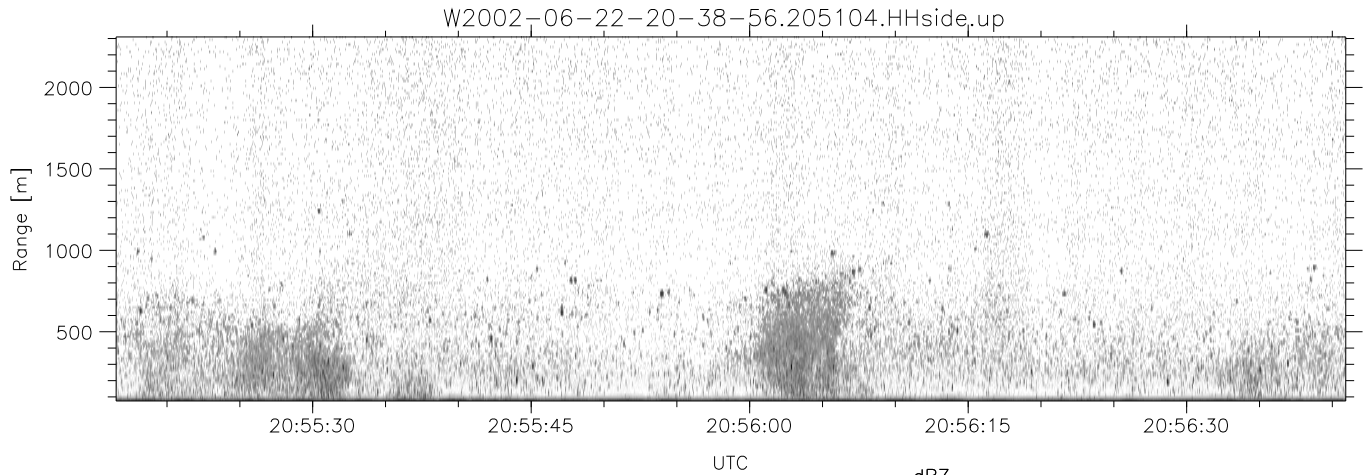


IHOP 2002 (dual-antenna config, modes 1,3,4,7) Data (cal: 49.0,50.0)

W2002-06-22-20-38-56 - SPPMAG
 IRIG:1,UTC: 20:38:41.31 to 21:03:58.10, Dur: 1517s
 TimeLngth: 1516.79s, TimeInt: 24ms (40.6pps)
 TimeCor=-13.0s, DSPDif(mn,min,mx):25,20,363
 PPS(min,max,std): 27,42,2.70
 Prof: 420 to 61927, NumProf(t/r): 61507/30122
 ProcTime/Recs: 20:51:04-21:03:26/30122-60243
 MxACQtime: 17ms; DRate: 97.1KB/s; Flags: 0, 0, 0
 Pulse: 275ns, IFfilt: 5.0MHz; ppPol: HH
 TxPol: H, PRF: 20 kHz
 Range: Delay 75m, Spacing 15m, Gates 150
 Ave. Pulses: 348, Rng/Prof Aspect@90m/s: 6.8

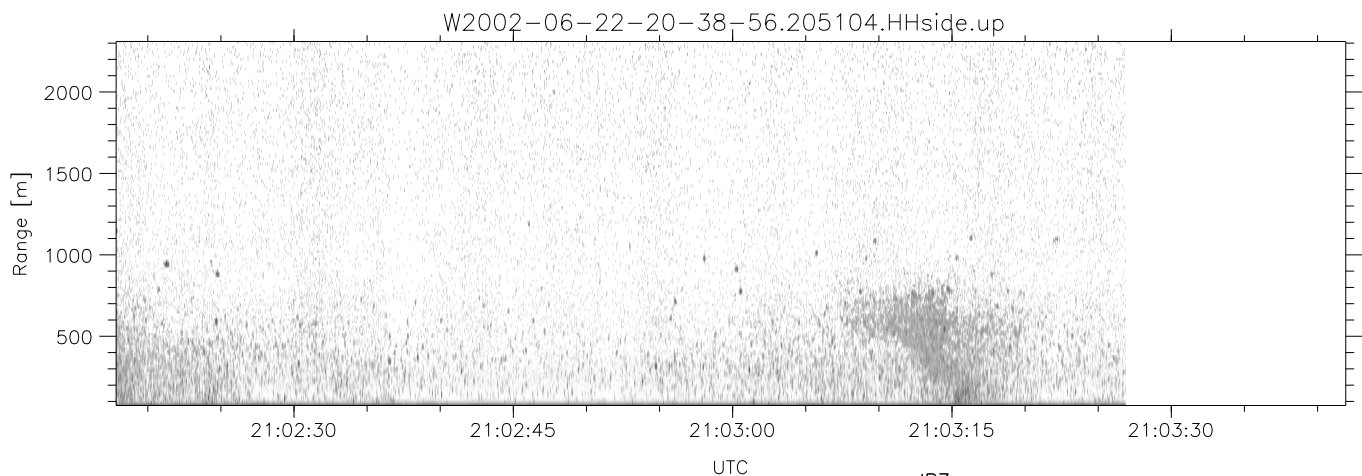
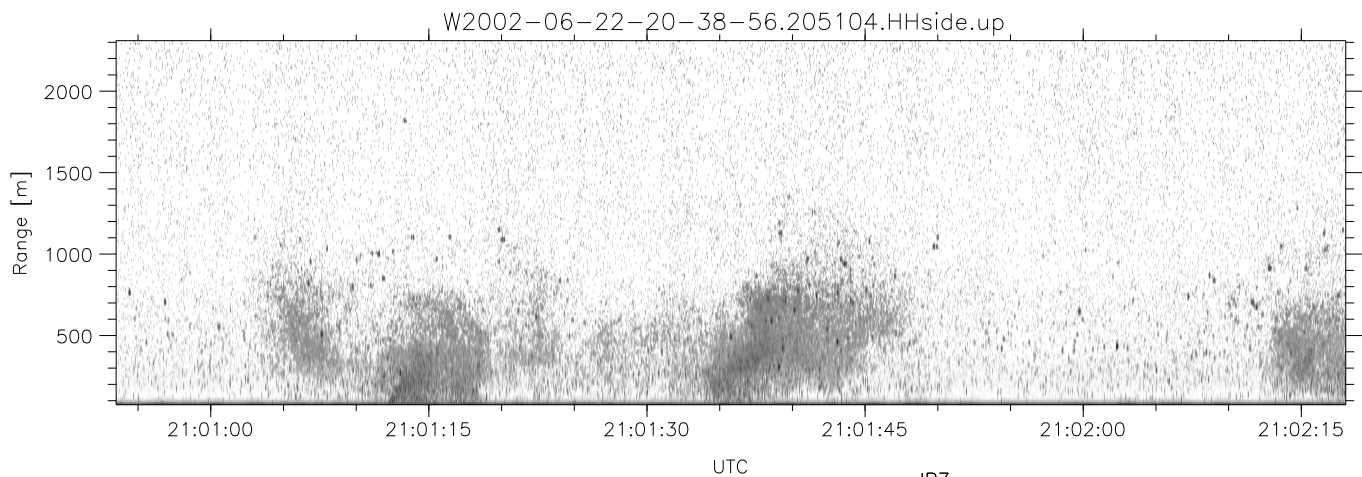
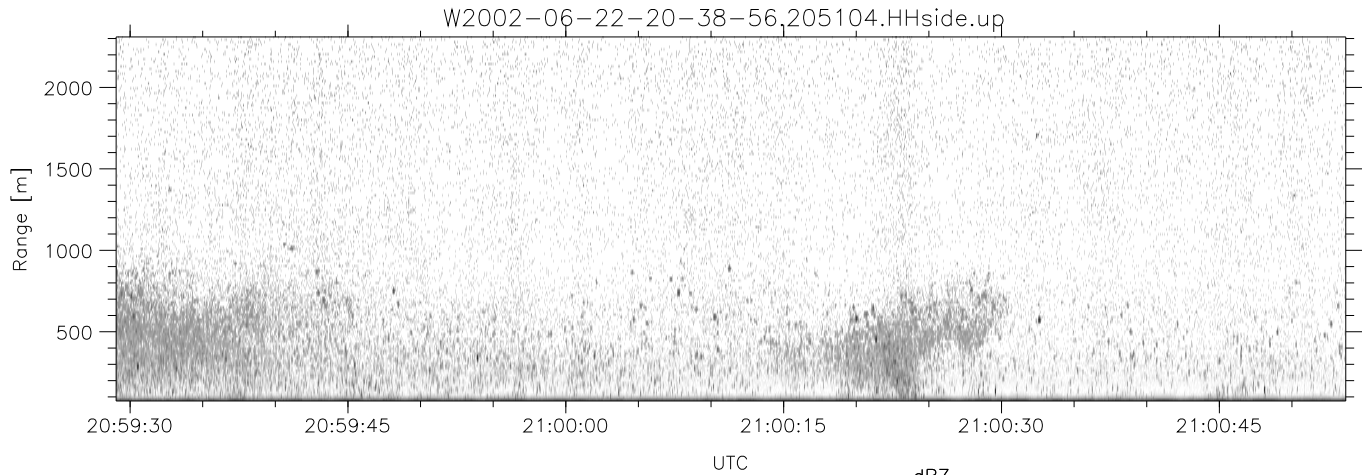
	Min	Max	Mean	Std	Varc%
hhN (dB)	-67.22	-65.47	-66.29	-79.29	5.0
vvN (dB)	-66.16	-64.37	-65.23	-78.13	5.1
hhL (dB)	-14.01	-6.16	-9.93	-15.89	25.4
vhL (dB)	-25.50	-7.30	-13.69	-15.82	61.3
ppN (m/s)	-15.80	15.80	-0.11	9.02	
ppT (m/s)	-0.04	0.02	-0.00	0.01	
vh/hh (dB)	-NaN	-16.12	-28.57	-24.33	265.
hn_jmp (dB)	-1.23	1.05	-0.10	-11.75	6.8
vn_jmp (dB)	-1.36	1.11	-0.12	-11.75	6.9



IHOP 2002 (dual-antenna config, modes 1,3,4,7) Data (cal: 49.0,50.0)

W2002-06-22-20-38-56 - SPPMAG
 IRIG:1,UTC: 20:38:41.31 to 21:03:58.10, Dur: 1517s
 TimeLngth: 1516.79s, TimeInt: 24ms (40.6pps)
 TimeCor=-13.0s, DSPDif(mn,min,mx):25,20,363
 PPS(min,max,std): 27,42,2.70
 Prof: 420 to 61927, NumProf(t/r): 61507/30122
 ProcTime/Recs: 20:51:04-21:03:26/30122-60243
 MxACQtime: 17ms; DRate: 97.1KB/s; Flags: 0, 0, 0
 Pulse: 275ns, IFfilt: 5.0MHz; ppPol: HH
 TxPol: H, PRF: 20 kHz
 Range: Delay 75m, Spacing 15m, Gates 150
 Ave. Pulses: 348, Rng/Prof Aspect@90m/s: 6.8

	Min	Max	Mean	Std	Varc%
hhN(dB)	-67.22	-65.47	-66.29	-79.29	5.0
vvN(dB)	-66.16	-64.37	-65.23	-78.13	5.1
hhL(dB)	-14.01	-6.16	-9.93	-15.89	25.4
vhL(dB)	-25.50	-7.30	-13.69	-15.82	61.3
ppN(m/s)	-15.80	15.80	-0.11	9.02	
ppT(m/s)	-0.04	0.02	-0.00	0.01	
vh/hh(dB)	-NaN	-16.12	-28.57	-24.33	265.
hnjmp(dB)	-1.23	1.05	-0.10	-11.75	6.8
vnjmp(dB)	-1.36	1.11	-0.12	-11.75	6.9



IHOP 2002 (dual-antenna config, modes 1,3,4,7) Data (cal: 49.0,50.0)

W2002-06-22-20-38-56 - SPPMAG
 IRIG:1,UTC: 20:38:41.31 to 21:03:58.10, Dur: 1517s
 TimeLngth: 1516.79s, TimeInt: 24ms (40.6pps)
 TimeCor=-13.0s, DSPDif(mn,min,mx):25,20,363
 PPS(min,max,std): 27,42,2.70
 Prof: 420 to 61927, NumProf(t/r): 61507/30122
 ProcTime/Recs: 20:51:04-21:03:26/30122-60243
 MxACQtime: 17ms; DRate: 97.1KB/s; Flags: 0, 0, 0
 Pulse: 275ns, IFfilt: 5.0MHz; ppPol: HH
 TxPol: H, PRF: 20 kHz
 Range: Delay 75m, Spacing 15m, Gates 150
 Ave. Pulses: 348, Rng/Prof Aspect@90m/s: 6.8

	Min	Max	Mean	Std	Varc%
hhN(dB)	-67.22	-65.47	-66.29	-79.29	5.0
vvN(dB)	-66.16	-64.37	-65.23	-78.13	5.1
hhL(dB)	-14.01	-6.16	-9.93	-15.89	25.4
vhL(dB)	-25.50	-7.30	-13.69	-15.82	61.3
ppN(m/s)	-15.80	15.80	-0.11	9.02	
ppT(m/s)	-0.04	0.02	-0.00	0.01	
vh/hh(dB)	-NaN	-16.12	-28.57	-24.33	265.
hnjmp(dB)	-1.23	1.05	-0.10	-11.75	6.8
vnjmp(dB)	-1.36	1.11	-0.12	-11.75	6.9