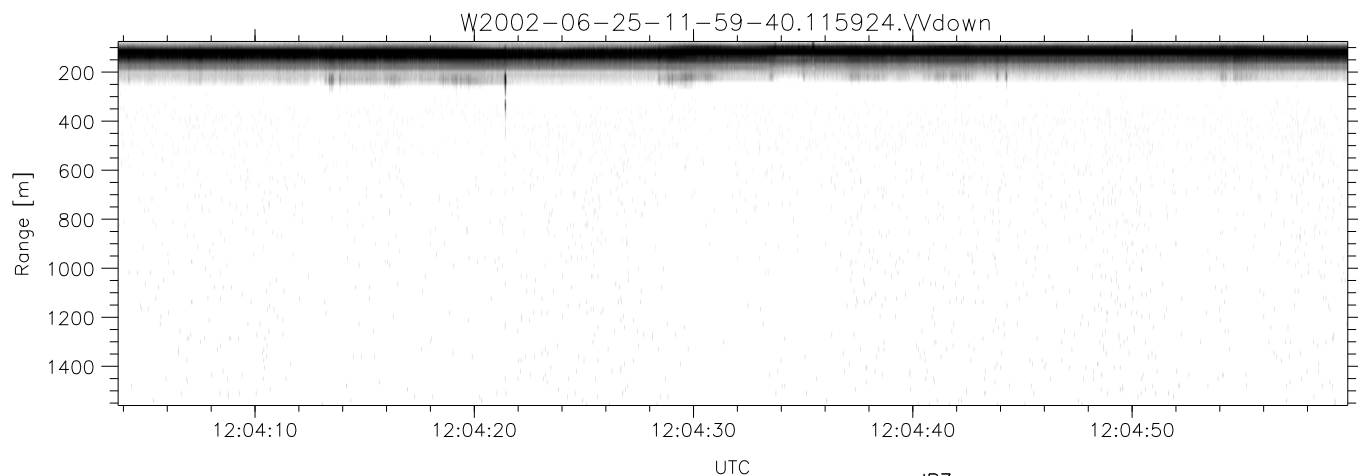
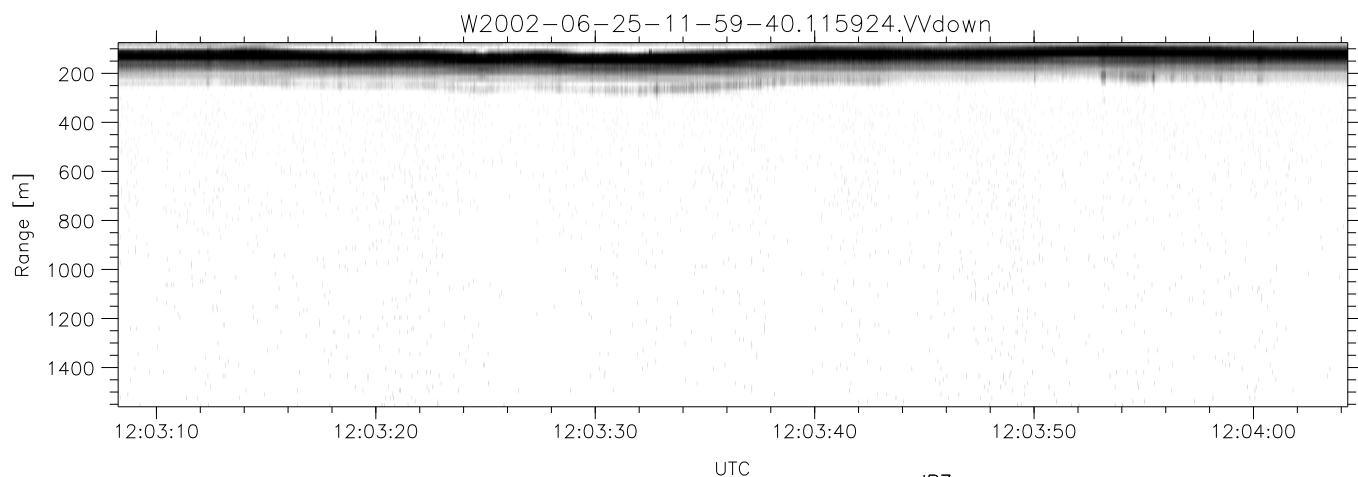
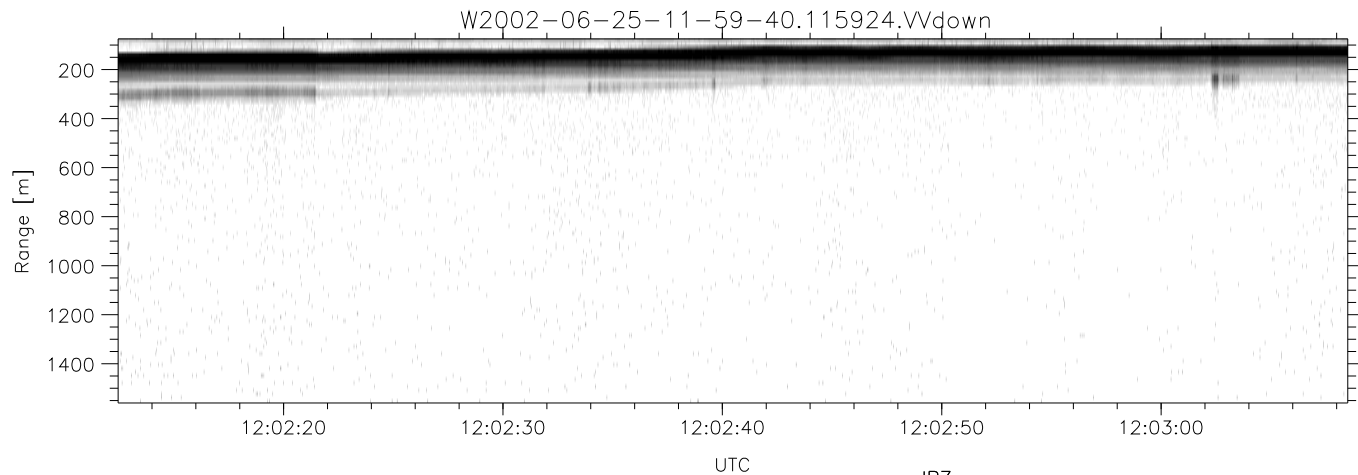


IHOP 2002 (dual-antenna config, modes 1,3,4,7) Data (cal: 49.0,50.0)

W2002-06-25-11-59-40 - PPMAG4
 IRIG:1,UTC: 11:59:24.60 to 12:25:09.37, Dur: 1545s
 TimeLngth: 1544.76s, TimeInt: 29ms (34.4pps)
 TimeCor=-13.0s, DSPDif(mn,min,mx):28,-971,3028
 PPS(min,max,std): 0,141,11.09
 Prof: 330 to 53446, NumProf(t/r): 53116/17069
 ProcTime/Recs: 11:59:24-12:07:39/0-17068
 MxACQtime: 33ms; DRate: 192.5KB/s; Flags: 0, 0, 0
 Pulse: 275ns, IFfilt: 5.0MHz; ppPol: HH HV VV
 TxPol: HHVV, PRF: 20 10 20 10 kHz
 Range: Delay 75m, Spacing 15m, Gates 100
 Ave. Pulses: 84, Rng/Prof Aspect@90m/s: 5.7

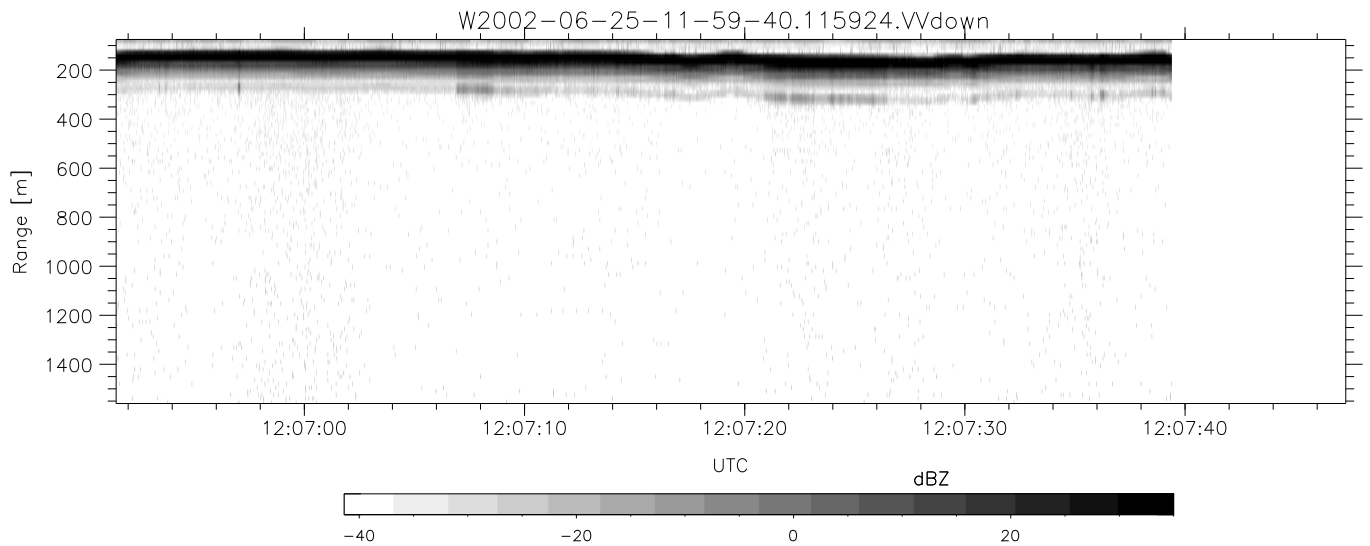
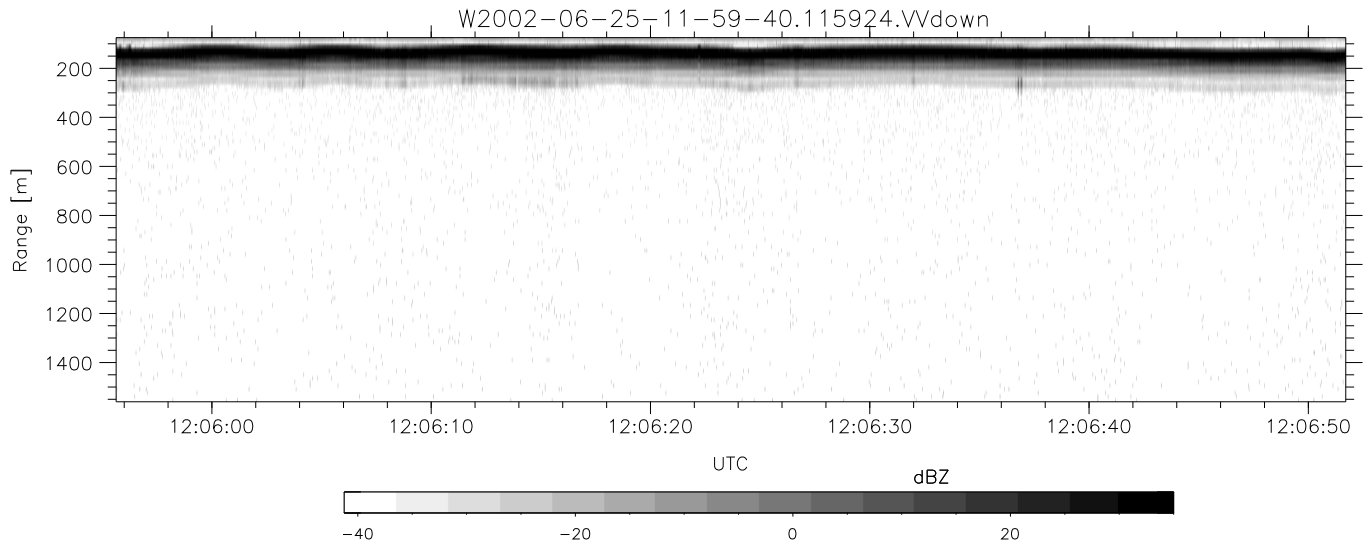
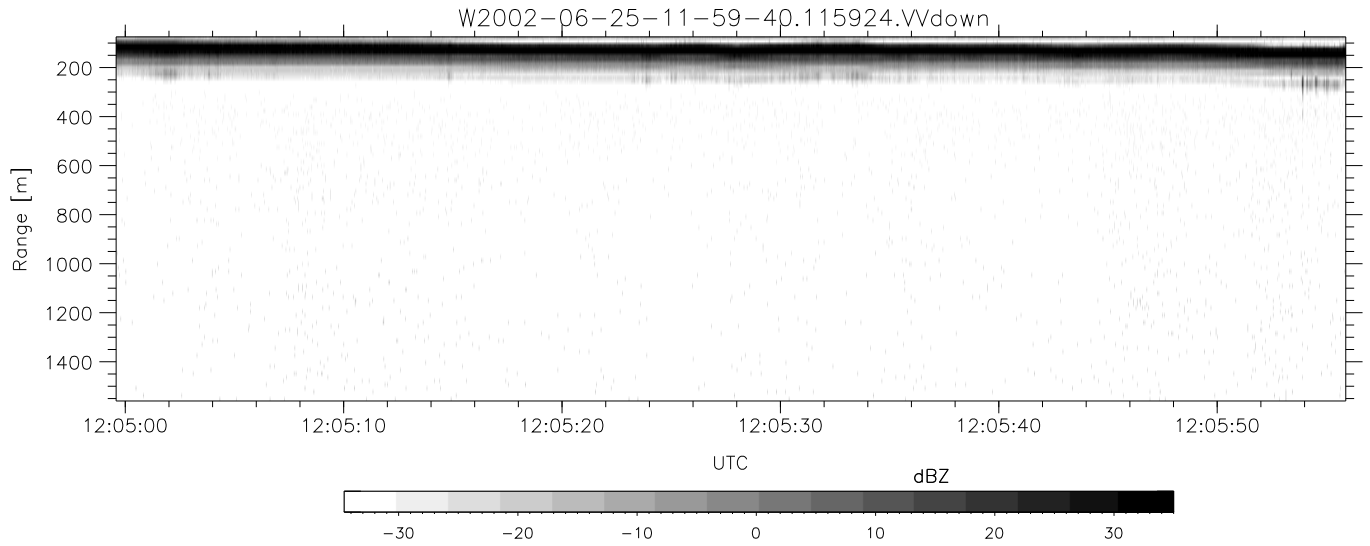
	Min	Max	Mean	Std	Varc%
hhN(dB)	-67.60	-64.00	-65.53	-75.62	9.8
vvN(dB)	-66.33	-63.11	-64.59	-74.63	9.9
hhL(dB)	-9.45	-1.73	-4.24	-9.88	27.3
vvL(dB)	-8.75	1.11	-3.19	-6.95	42.1
ppN(m/s)	-11.98	12.61	0.07	4.13	
ppT(m/s)	-94.67	99.61	0.56	32.62	
hh/vv(dB)	-NaN	33.69	9.47	19.13	924.
vh/hh(dB)	-31.92	-4.56	-10.47	-8.47	158.
hv/vv(dB)	-NaN	-21.09	-46.75	-42.91	242.
hnjmp(dB)	-2.60	2.20	-0.09	-8.67	13.8
vnjmp(dB)	-2.54	2.09	-0.09	-8.66	13.9



IHOP 2002 (dual-antenna config, modes 1,3,4,7) Data (cal: 49.0,50.0)

W2002-06-25-11-59-40 - PPMAG4
 IRIG:1,UTC: 11:59:24.60 to 12:25:09.37, Dur: 1545s
 TimeLngth: 1544.76s, TimeInt: 29ms (34.4pps)
 TimeCor=-13.0s, DSPDif(mn,min,mx):28,-971,3028
 PPS(min,max,std): 0,141,11.09
 Prof: 330 to 53446, NumProf(t/r): 53116/17069
 ProcTime/Recs: 11:59:24-12:07:39/0-17068
 MxACQtime: 33ms; DRate: 192.5KB/s; Flags: 0, 0, 0
 Pulse: 275ns, IFilt: 5.0MHz; ppPol: HH HV VV
 TxPol: HHVV, PRF: 20 10 20 10 kHz
 Range: Delay 75m, Spacing 15m, Gates 100
 Ave. Pulses: 84, Rng/Prof Aspect@90m/s: 5.7

	Min	Max	Mean	Std	Varc%
hhN(dB)	-67.60	-64.00	-65.53	-75.62	9.8
vvN(dB)	-66.33	-63.11	-64.59	-74.63	9.9
hhL(dB)	-9.45	-1.73	-4.24	-9.88	27.3
vvL(dB)	-8.75	1.11	-3.19	-6.95	42.1
ppN(m/s)	-11.98	12.61	0.07	4.13	
ppT(m/s)	-94.67	99.61	0.56	32.62	
hh/vv(dB)	-NaN	33.69	9.47	19.13	924.
vh/hh(dB)	-31.92	-4.56	-10.47	-8.47	158.
hv/vv(dB)	-NaN	-21.09	-46.75	-42.91	242.
hnjmp(dB)	-2.60	2.20	-0.09	-8.67	13.8
vnjmp(dB)	-2.54	2.09	-0.09	-8.66	13.9



IHOP 2002 (dual-antenna config, modes 1,3,4,7) Data (cal: 49.0,50.0)

W2002-06-25-11-59-40 - PPMAG4
 IRIG:1,UTC: 11:59:24.60 to 12:25:09.37, Dur: 1545s
 TimeLngth: 1544.76s, TimeInt: 29ms (34.4pps)
 TimeCor=-13.0s, DSPDif(mn,min,mx):28,-971,3028
 PPS(min,max,std): 0,141,11.09
 Prof: 330 to 53446, NumProf(t/r): 53116/17069
 ProcTime/Recs: 11:59:24-12:07:39/0-17068
 MxACQtime: 33ms; DRate: 192.5KB/s; Flags: 0, 0, 0
 Pulse: 275ns, IFilt: 5.0MHz; ppPol: HH HV VV
 TxPol: HHVV, PRF: 20 10 20 10 kHz
 Range: Delay 75m, Spacing 15m, Gates 100
 Ave. Pulses: 84, Rng/Prof Aspect@90m/s: 5.7

	Min	Max	Mean	Std	Varc%
hhN(dB)	-67.60	-64.00	-65.53	-75.62	9.8
vvN(dB)	-66.33	-63.11	-64.59	-74.63	9.9
hhL(dB)	-9.45	-1.73	-4.24	-9.88	27.3
vvL(dB)	-8.75	1.11	-3.19	-6.95	42.1
ppN(m/s)	-11.98	12.61	0.07	4.13	
ppT(m/s)	-94.67	99.61	0.56	32.62	
hh/vv(dB)	-NaN	33.69	9.47	19.13	924.
vh/hh(dB)	-31.92	-4.56	-10.47	-8.47	158.
hv/vv(dB)	-NaN	-21.09	-46.75	-42.91	242.
hnjmp(dB)	-2.60	2.20	-0.09	-8.67	13.8
vnjmp(dB)	-2.54	2.09	-0.09	-8.66	13.9