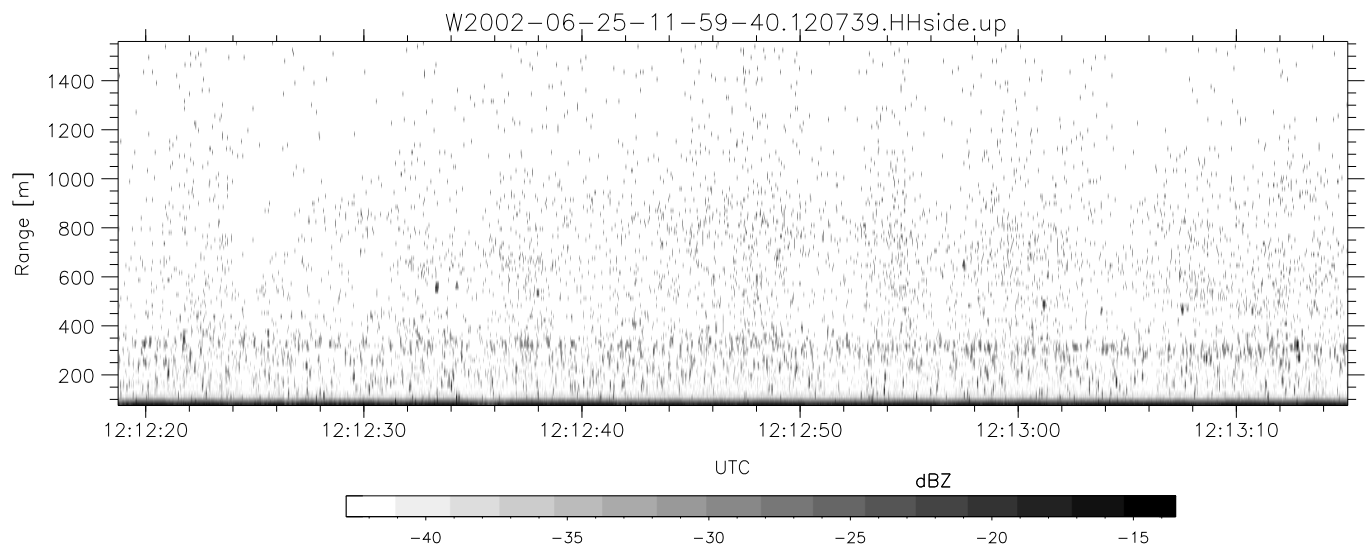
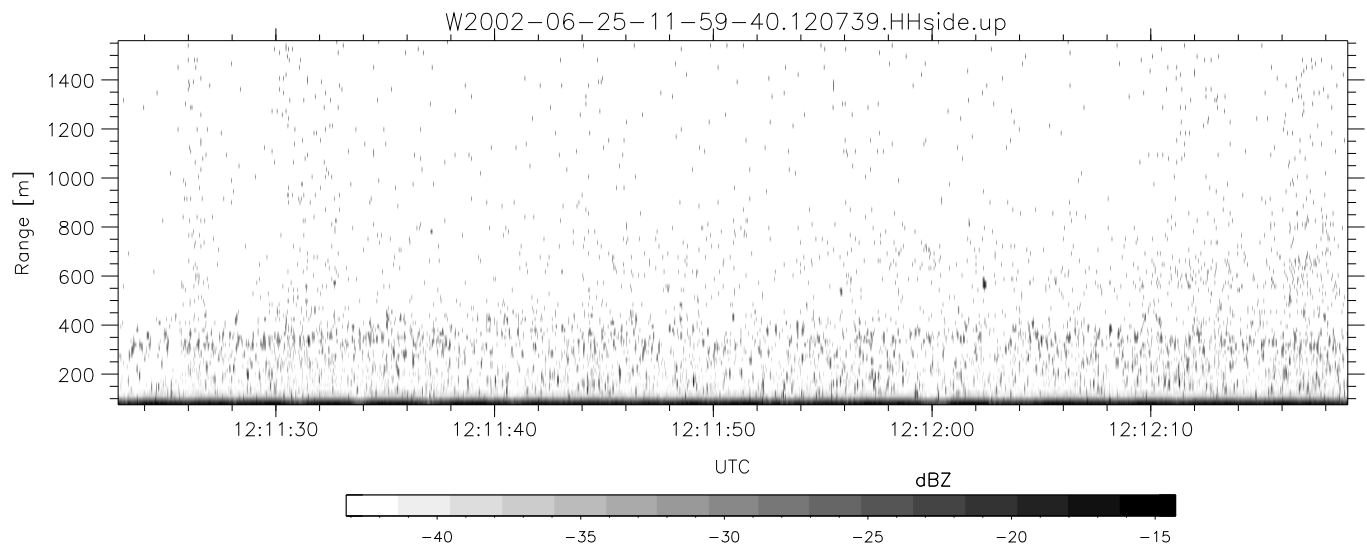
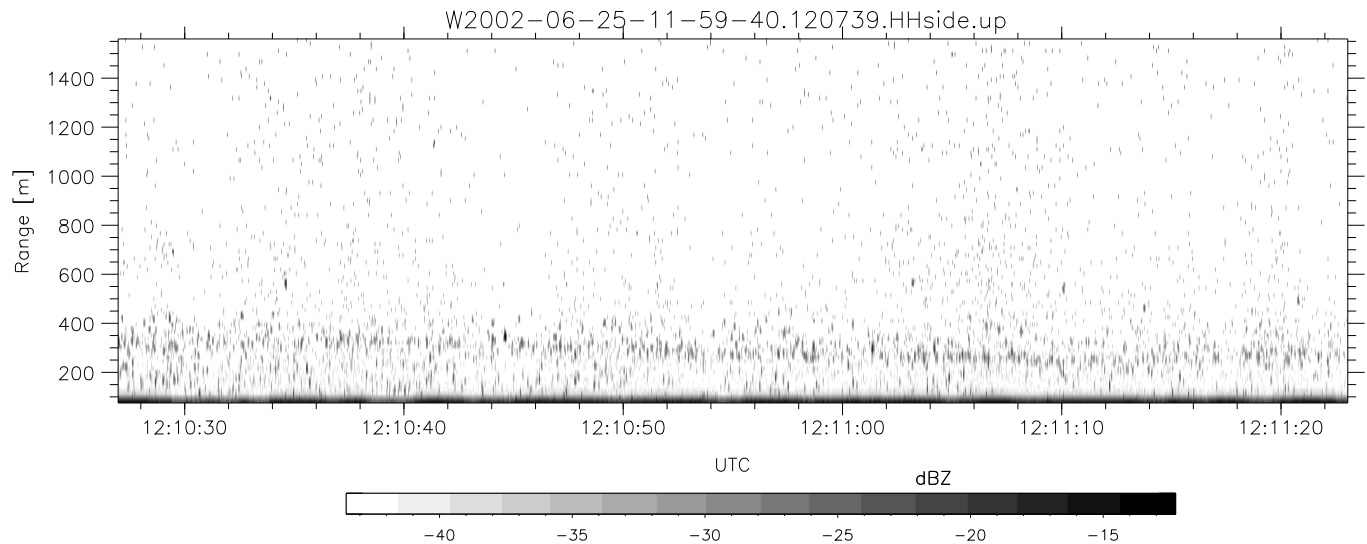


IHOP 2002 (dual-antenna config, modes 1,3,4,7) Data (cal: 49.0,50.0)

W2002-06-25-11-59-40 - PPMAG4
 IRIG:1,UTC: 11:59:24.60 to 12:25:09.37, Dur: 1545s
 TimeLngth: 1544.76s, TimeInt: 29ms (34.4pps)
 TimeCor=-13.0s, DSPDif(mn,min,mx):29,-971,3028
 PPS(min,max,std): 0,142,11.07
 Prof: 330 to 53446, NumProf(t/r): 53116/17069
 ProcTime/Recs: 12:07:39-12:15:55/17069-34137
 MxACQtime: 33ms; DRate: 192.5KB/s; Flags: 0, 0, 0
 Pulse: 275ns, IFfilt: 5.0MHz; ppPol: HH HV VV
 TxPol: HHVV, PRF: 20 10 20 10 kHz
 Range: Delay 75m, Spacing 15m, Gates 100
 Ave. Pulses: 84, Rng/Prof Aspect@90m/s: 5.7

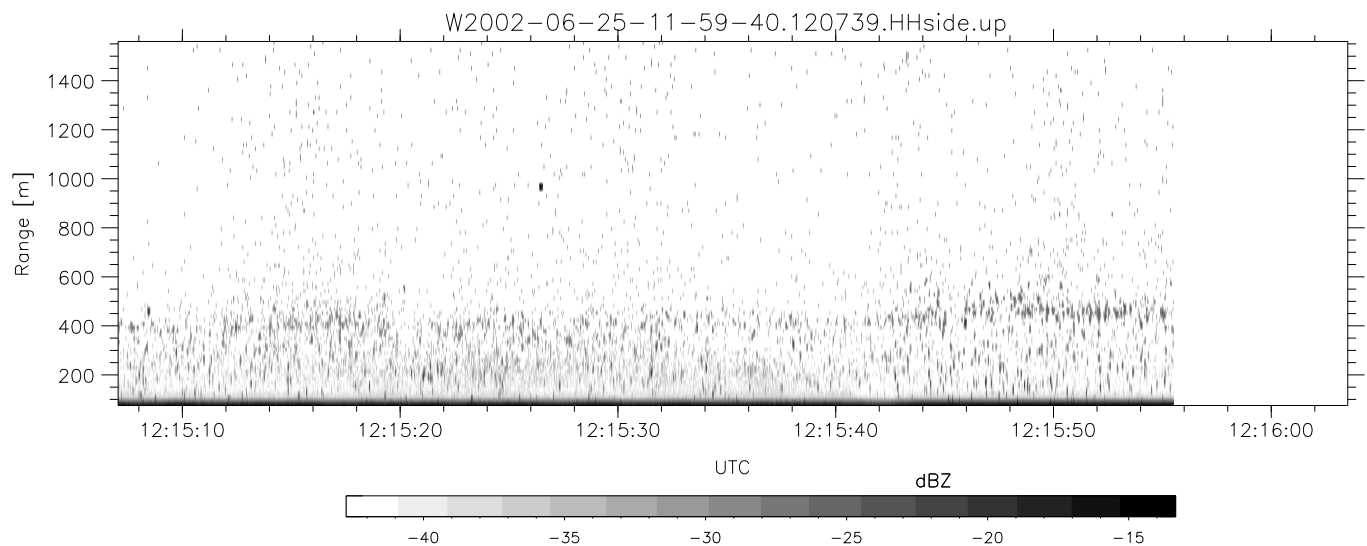
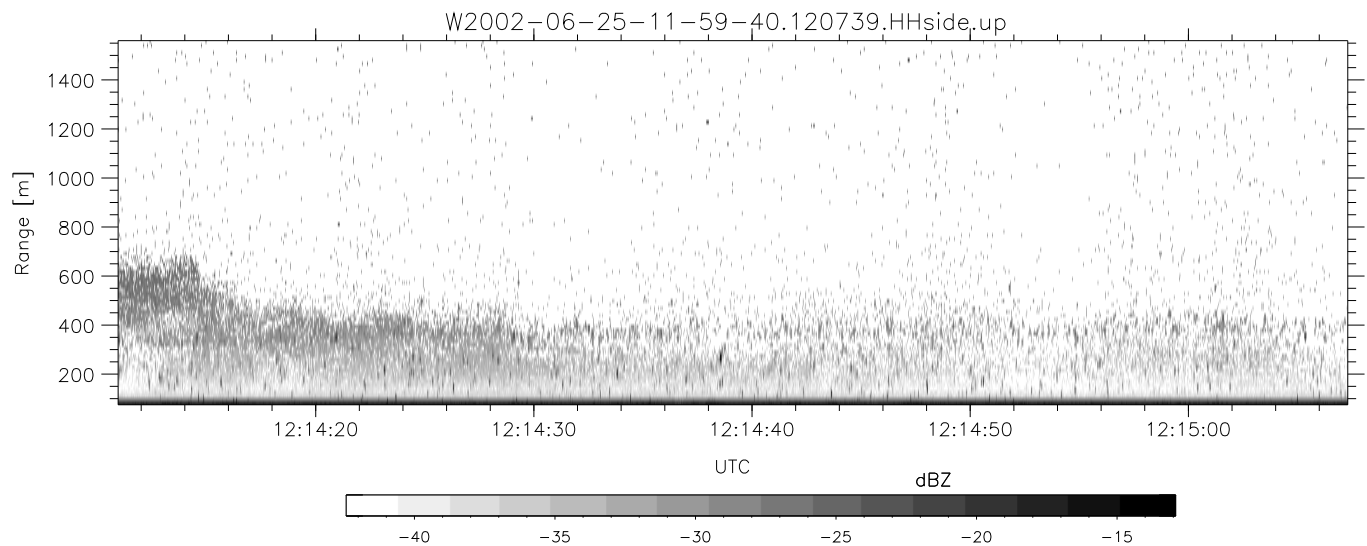
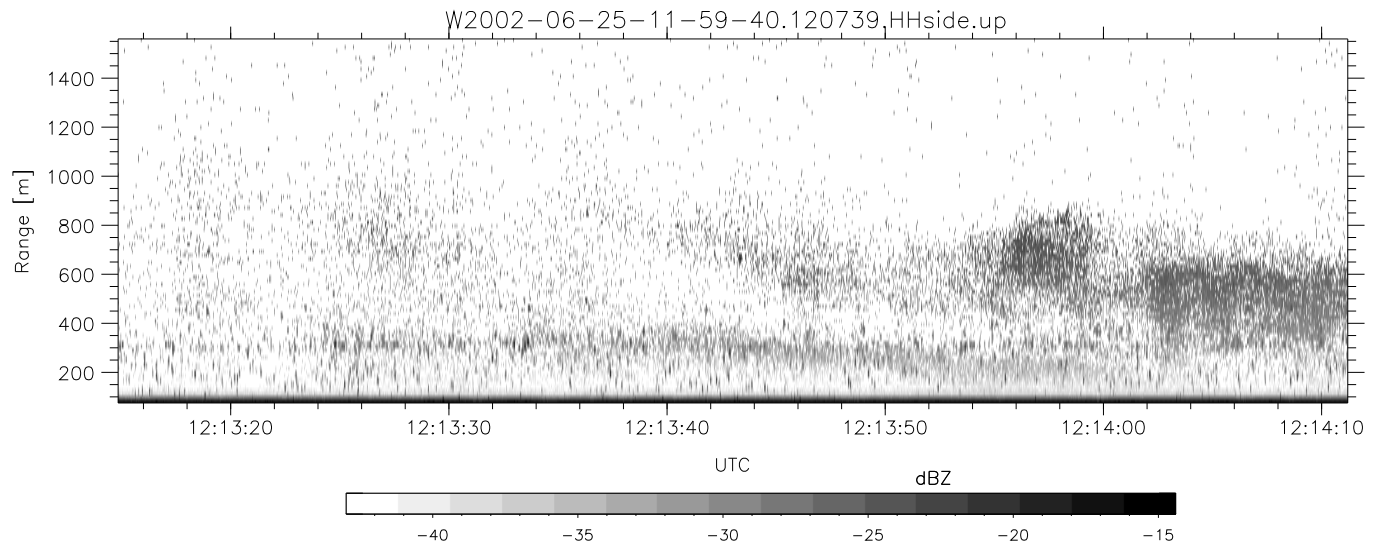
	Min	Max	Mean	Std	Varc%
hhN(dB)	-67.40	-64.03	-65.55	-75.65	9.8
vvN(dB)	-66.35	-63.11	-64.57	-74.61	9.9
hhL(dB)	-9.98	-1.93	-3.88	-10.06	24.1
vvL(dB)	-9.68	0.74	-3.85	-7.29	45.3
ppN(m/s)	-12.43	12.53	0.01	4.14	
ppT(m/s)	-98.23	99.00	0.11	32.67	
hh/vv(dB)	-NaN	47.76	19.66	32.84	2080
vh/hh(dB)	-99.00	-99.00	-99.00	-99.00	-99.
hv/vv(dB)	-NaN	-23.67	-49.69	-43.33	433.
hnjmp(dB)	-2.57	2.55	0.17	-8.41	13.9
vnjmp(dB)	-2.06	2.37	0.17	-8.39	13.9



IHOP 2002 (dual-antenna config, modes 1,3,4,7) Data (cal: 49.0,50.0)

W2002-06-25-11-59-40 - PPMAG4
 IRIG:1,UTC: 11:59:24.60 to 12:25:09.37, Dur: 1545s
 TimeLngth: 1544.76s, TimeInt: 29ms (34.4pps)
 TimeCor=-13.0s, DSPDif(mn,min,mx):29,-971,3028
 PPS(min,max,std): 0,142,11.07
 Prof: 330 to 53446, NumProf(t/r): 53116/17069
 ProcTime/Recs: 12:07:39-12:15:55/17069-34137
 MxACQtime: 33ms; DRate: 192.5KB/s; Flags: 0, 0, 0
 Pulse: 275ns, IFfilt: 5.0MHz; ppPol: HH HV VV
 TxPol: HHVV, PRF: 20 10 20 10 kHz
 Range: Delay 75m, Spacing 15m, Gates 100
 Ave. Pulses: 84, Rng/Prof Aspect@90m/s: 5.7

	Min	Max	Mean	Std	Varc%
hhN(dB)	-67.40	-64.03	-65.55	-75.65	9.8
vvN(dB)	-66.35	-63.11	-64.57	-74.61	9.9
hhL(dB)	-9.98	-1.93	-3.88	-10.06	24.1
vvL(dB)	-9.68	0.74	-3.85	-7.29	45.3
ppN(m/s)	-12.43	12.53	0.01	4.14	
ppT(m/s)	-98.23	99.00	0.11	32.67	
hh/vv(dB)	-NaN	47.76	19.66	32.84	2080
vh/hh(dB)	-99.00	-99.00	-99.00	-99.00	-99.
hv/vv(dB)	-NaN	-23.67	-49.69	-43.33	433.
hn_jmp(dB)	-2.57	2.55	0.17	-8.41	13.9
vn_jmp(dB)	-2.06	2.37	0.17	-8.39	13.9



IHOP 2002 (dual-antenna config, modes 1,3,4,7) Data (cal: 49.0,50.0)

W2002-06-25-11-59-40 - PPMAG4
 IRIG:1,UTC: 11:59:24.60 to 12:25:09.37, Dur: 1545s
 TimeLngth: 1544.76s, TimeInt: 29ms (34.4pps)
 TimeCor=-13.0s, DSPDif(mn,min,mx):29,-971,3028
 PPS(min,max,std): 0,142,11.07
 Prof: 330 to 53446, NumProf(t/r): 53116/17069
 ProcTime/Recs: 12:07:39-12:15:55/17069-34137
 MxACQtime: 33ms; DRate: 192.5KB/s; Flags: 0, 0, 0
 Pulse: 275ns, IFfilt: 5.0MHz; ppPol: HH HV VV
 TxPol: HHVV, PRF: 20 10 20 10 kHz
 Range: Delay 75m, Spacing 15m, Gates 100
 Ave. Pulses: 84, Rng/Prof Aspect@90m/s: 5.7

	Min	Max	Mean	Std	Varc%
hhN(dB)	-67.40	-64.03	-65.55	-75.65	9.8
vvN(dB)	-66.35	-63.11	-64.57	-74.61	9.9
hhL(dB)	-9.98	-1.93	-3.88	-10.06	24.1
vvL(dB)	-9.68	0.74	-3.85	-7.29	45.3
ppN(m/s)	-12.43	12.53	0.01	4.14	
ppT(m/s)	-98.23	99.00	0.11	32.67	
hh/vv(dB)	-NaN	47.76	19.66	32.84	2080
vh/hh(dB)	-99.00	-99.00	-99.00	-99.00	-99.
hv/vv(dB)	-NaN	-23.67	-49.69	-43.33	433.
hnjmp(dB)	-2.57	2.55	0.17	-8.41	13.9
vnjmp(dB)	-2.06	2.37	0.17	-8.39	13.9