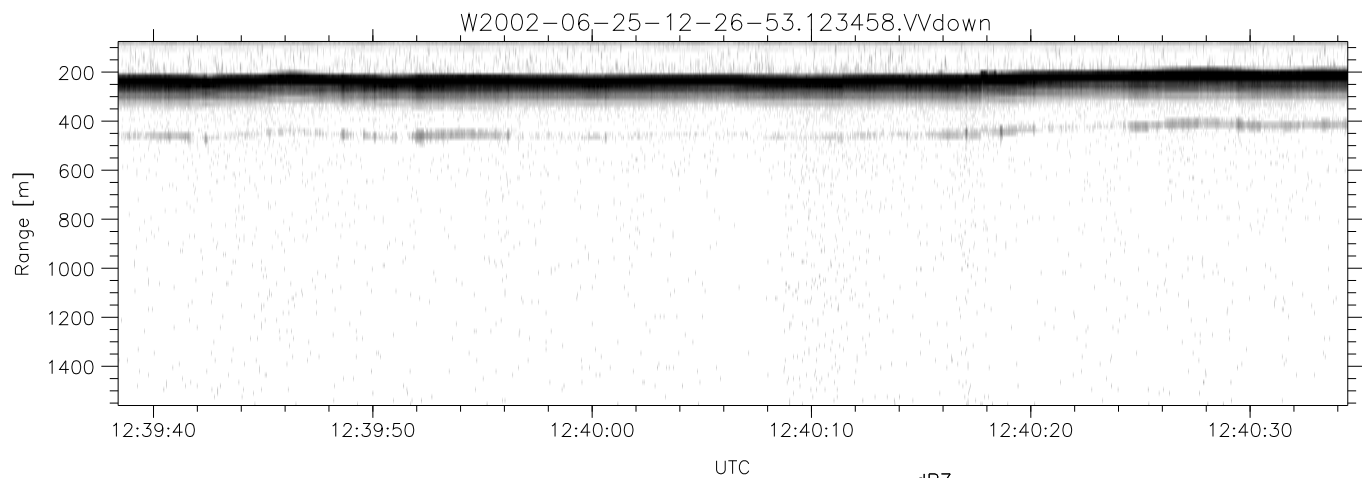
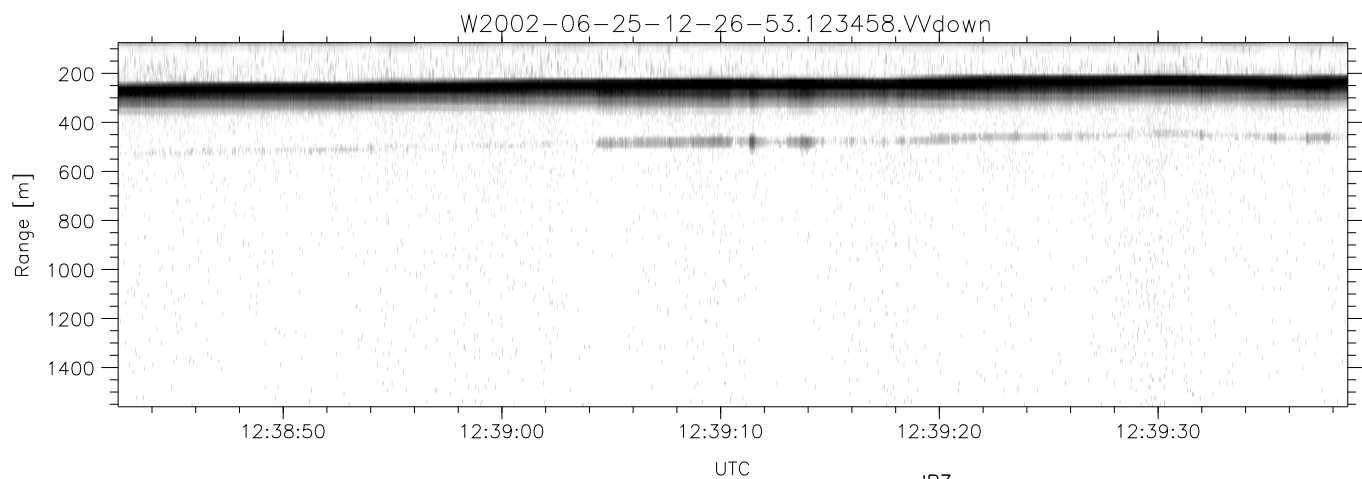
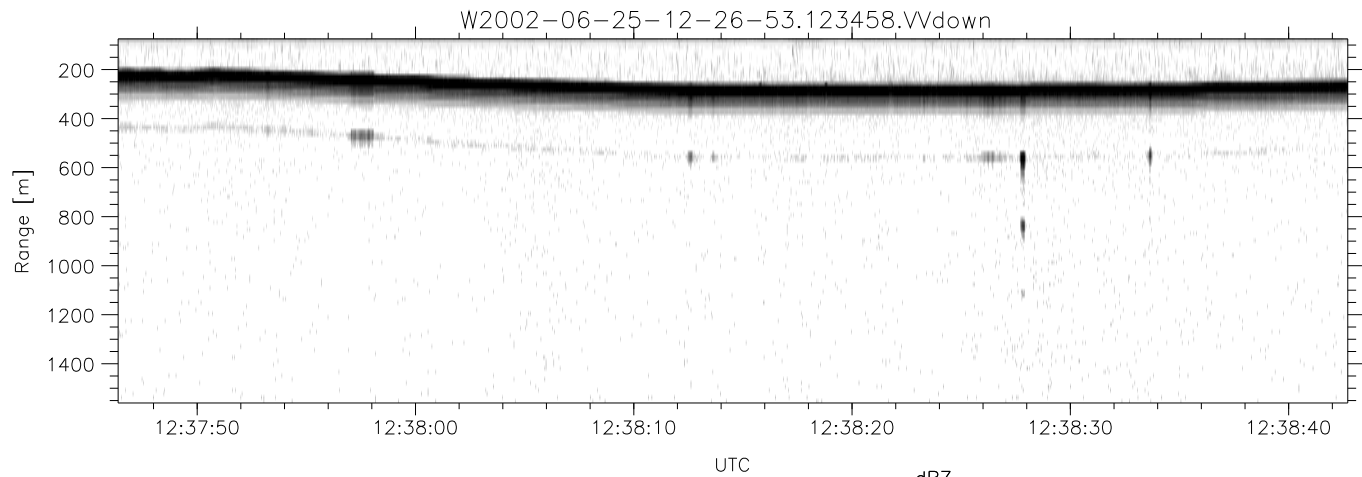


IHOP 2002 (dual-antenna config, modes 1,3,4,7) Data (cal: 49.0,50.0)

W2002-06-25-12-26-53 - PPMAG4  
 IRIG:1,UTC: 12:26:37.85 to 12:52:28.83, Dur: 1551s  
 TimeLngth: 1550.98s, TimeInt: 29ms (34.1pps)  
 TimeCor=-13.0s, DSPDif(mn,min,mx):28,-971,2028  
 PPS(min,max,std): 0,139,10.91  
 Prof: 415 to 53270, NumProf(t/r): 52855/17069  
 ProcTime/Recs: 12:34:58-12:43:20/17069-34137  
 MxACQtime: 33ms; DRate: 190.8KB/s; Flags: 0, 0, 0  
 Pulse: 275ns, IFilt: 5.0MHz; ppPol: HH HV VV  
 TxPol: HHVV, PRF: 20 10 20 10 kHz  
 Range: Delay 75m, Spacing 15m, Gates 100  
 Ave. Pulses: 84, Rng/Prof Aspect@90m/s: 5.7

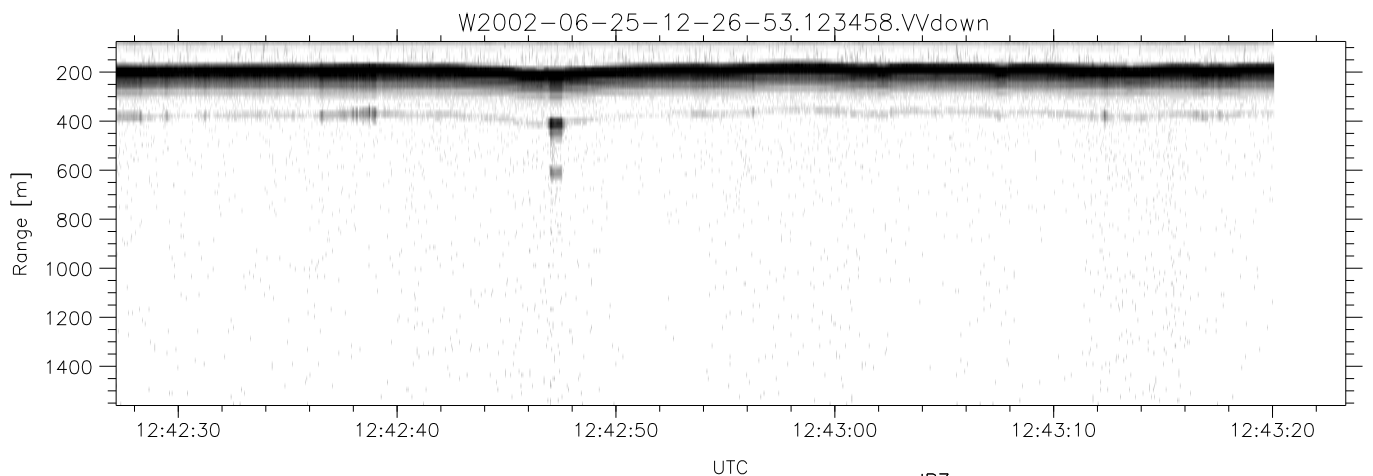
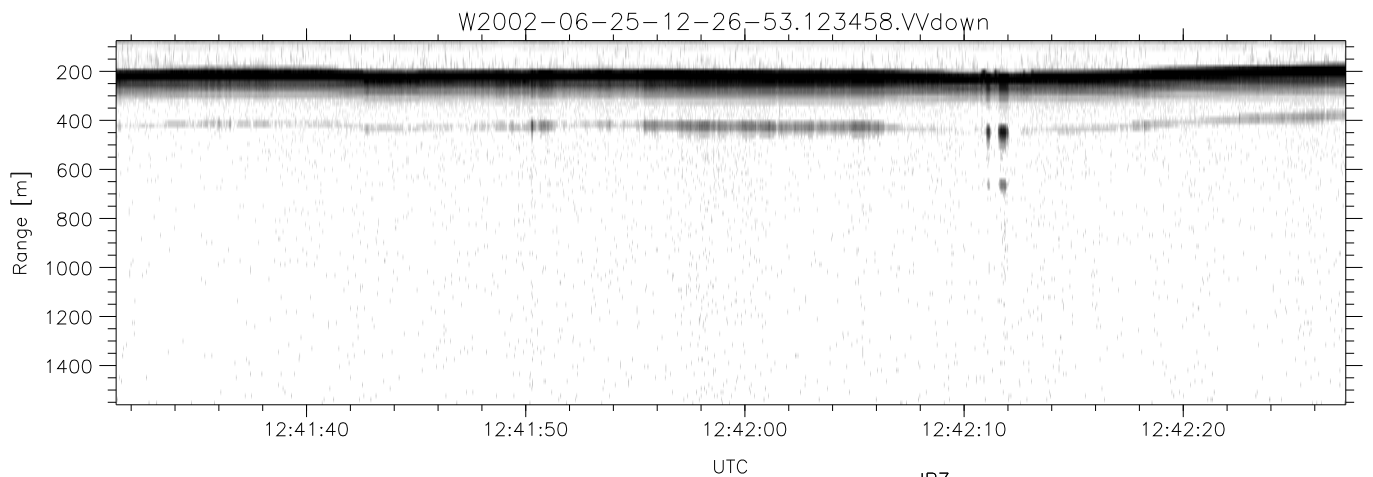
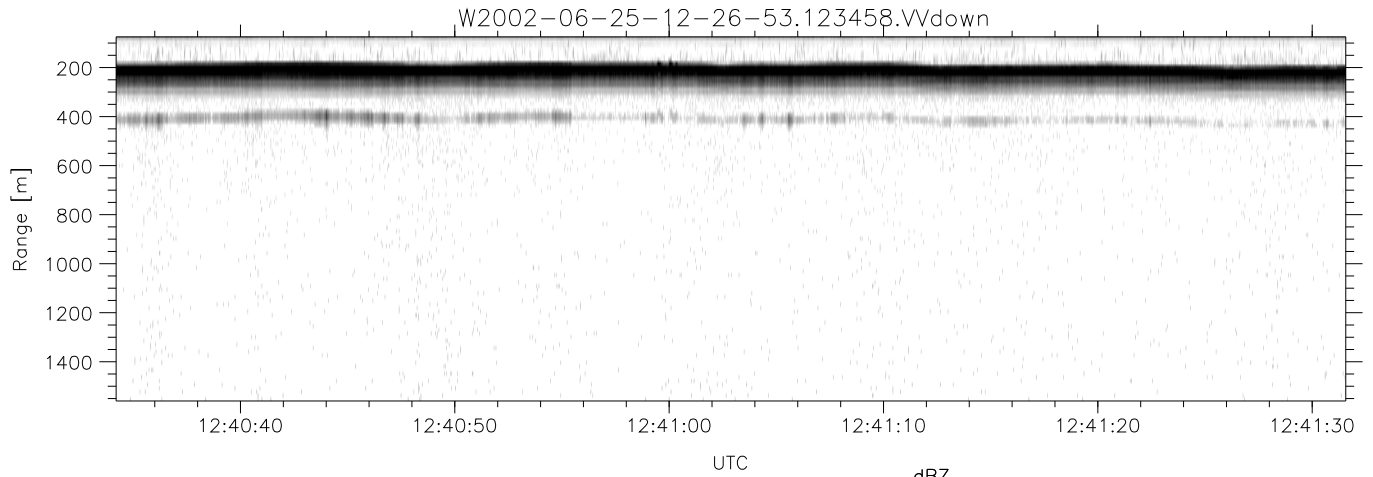
	Min	Max	Mean	Std	Varc%
hhN(dB)	-67.35	-64.13	-65.72	-75.80	9.8
vvN(dB)	-66.72	-62.90	-64.65	-74.77	9.7
hhL(dB)	-9.02	-2.76	-4.54	-11.91	18.3
vvL(dB)	-9.83	-1.10	-5.10	-10.75	27.2
ppN(m/s)	-12.33	12.38	-0.02	4.13	
ppT(m/s)	-97.39	97.81	-0.12	32.60	
hh/vv(dB)	-NaN	39.61	17.02	30.62	2289
vh/hh(dB)	-99.00	-99.00	-99.00	-99.00	-99.
hv/vv(dB)	-NaN	-34.46	-51.65	-46.33	340.
hnjmp(dB)	-2.26	1.84	-0.10	-8.74	13.7
vnjmp(dB)	-2.65	2.04	-0.08	-8.73	13.7



IHOP 2002 (dual-antenna config, modes 1,3,4,7) Data (cal: 49.0,50.0)

W2002-06-25-12-26-53 - PPMAG4  
 IRIG:1,UTC: 12:26:37.85 to 12:52:28.83, Dur: 1551s  
 TimeLngth: 1550.98s, TimeInt: 29ms (34.1pps)  
 TimeCor=-13.0s, DSPDif(mn,min,mx):28,-971,2028  
 PPS(min,max,std): 0,139,10.91  
 Prof: 415 to 53270, NumProf(t/r): 52855/17069  
 ProcTime/Recs: 12:34:58-12:43:20/17069-34137  
 MxACQtime: 33ms; DRate: 190.8KB/s; Flags: 0, 0, 0  
 Pulse: 275ns, IFfilt: 5.0MHz; ppPol: HH HV VV  
 TxPol: HHVV, PRF: 20 10 20 10 kHz  
 Range: Delay 75m, Spacing 15m, Gates 100  
 Ave. Pulses: 84, Rng/Prof Aspect@90m/s: 5.7

	Min	Max	Mean	Std	Varc%
hhN(dB)	-67.35	-64.13	-65.72	-75.80	9.8
vvN(dB)	-66.72	-62.90	-64.65	-74.77	9.7
hhL(dB)	-9.02	-2.76	-4.54	-11.91	18.3
vvL(dB)	-9.83	-1.10	-5.10	-10.75	27.2
ppN(m/s)	-12.33	12.38	-0.02	4.13	
ppT(m/s)	-97.39	97.81	-0.12	32.60	
hh/vv(dB)	-NaN	39.61	17.02	30.62	2289
vh/hh(dB)	-99.00	-99.00	-99.00	-99.00	-99.
hv/vv(dB)	-NaN	-34.46	-51.65	-46.33	340.
hnjmp(dB)	-2.26	1.84	-0.10	-8.74	13.7
vnjmp(dB)	-2.65	2.04	-0.08	-8.73	13.7



IHOP 2002 (dual-antenna config, modes 1,3,4,7) Data (cal: 49.0,50.0)

W2002-06-25-12-26-53 - PPMAG4  
 IRIG:1,UTC: 12:26:37.85 to 12:52:28.83, Dur: 1551s  
 TimeLngth: 1550.98s, TimeInt: 29ms (34.1pps)  
 TimeCor=-13.0s, DSPDif(mn,min,mx):28,-971,2028  
 PPS(min,max,std): 0,139,10.91  
 Prof: 415 to 53270, NumProf(t/r): 52855/17069  
 ProcTime/Recs: 12:34:58-12:43:20/17069-34137  
 MxACQtime: 33ms; DRate: 190.8KB/s; Flags: 0, 0, 0  
 Pulse: 275ns, IFfilt: 5.0MHz; ppPol: HH HV VV  
 TxPol: HHVV, PRF: 20 10 20 10 kHz  
 Range: Delay 75m, Spacing 15m, Gates 100  
 Ave. Pulses: 84, Rng/Prof Aspect@90m/s: 5.7

	Min	Max	Mean	Std	Varc%
hhN(dB)	-67.35	-64.13	-65.72	-75.80	9.8
vvN(dB)	-66.72	-62.90	-64.65	-74.77	9.7
hhL(dB)	-9.02	-2.76	-4.54	-11.91	18.3
vvL(dB)	-9.83	-1.10	-5.10	-10.75	27.2
ppN(m/s)	-12.33	12.38	-0.02	4.13	
ppT(m/s)	-97.39	97.81	-0.12	32.60	
hh/vv(dB)	-NaN	39.61	17.02	30.62	2289
vh/hh(dB)	-99.00	-99.00	-99.00	-99.00	-99.
hv/vv(dB)	-NaN	-34.46	-51.65	-46.33	340.
hnjmp(dB)	-2.26	1.84	-0.10	-8.74	13.7
vnjmp(dB)	-2.65	2.04	-0.08	-8.73	13.7