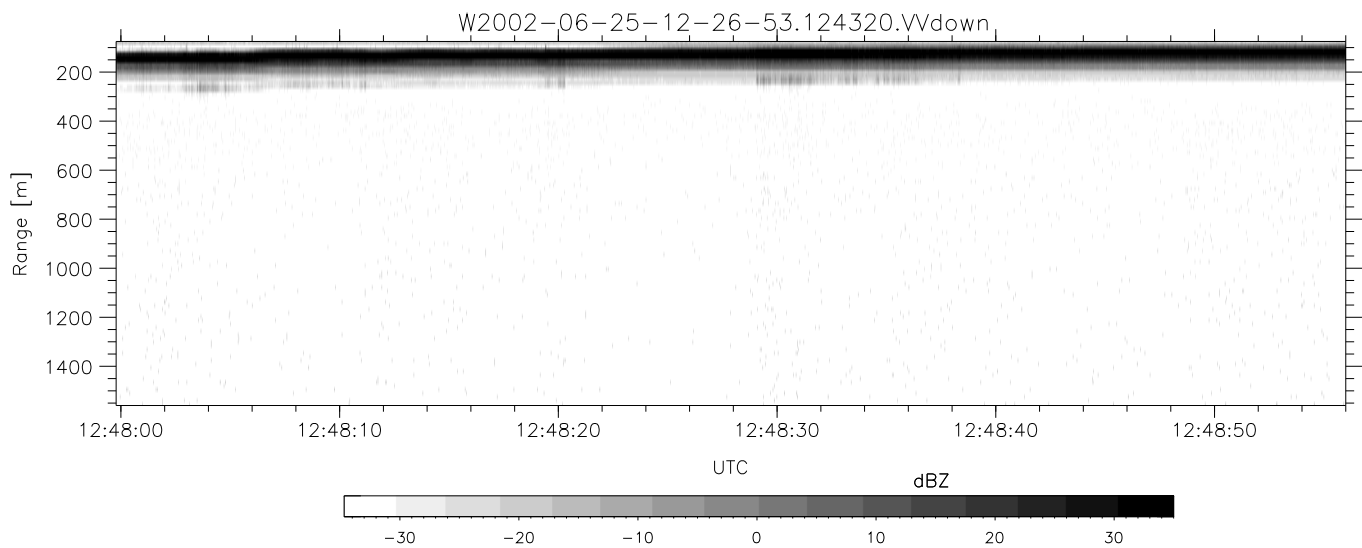
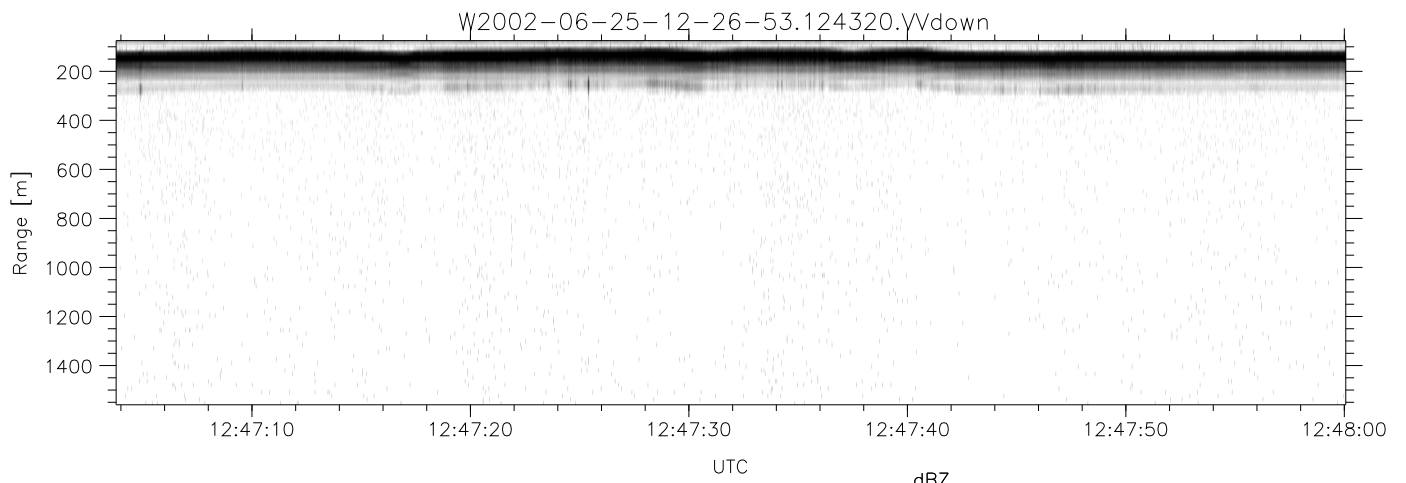
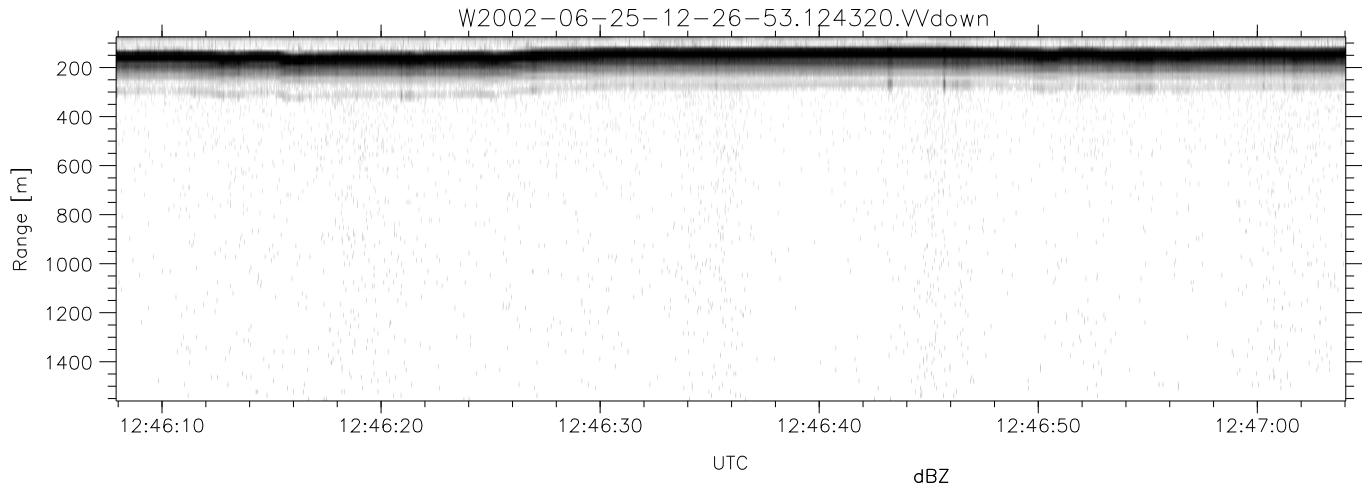


IHOP 2002 (dual-antenna config, modes 1,3,4,7) Data (cal: 49.0,50.0)

W2002-06-25-12-26-53 - PPMAG4
 IRIG:1,UTC: 12:26:37.85 to 12:52:28.83, Dur: 1551s
 TimeLngth: 1550.98s, TimeInt: 29ms (34.1pps)
 TimeCor=-13.0s, DSPDif(mn,min,mx):29,28,368
 PPS(min,max,std): 24,36,2.29
 Prof: 415 to 53270, NumProf(t/r): 52855/17069
 ProcTime/Recs: 12:43:20-12:51:40/34138-51206
 MxACQtime: 33ms; DRate: 190.8KB/s; Flags: 0, 0, 0
 Pulse: 275ns, IFilt: 5.0MHz; ppPol: HH HV VV
 TxPol: HHVV, PRF: 20 10 20 10 kHz
 Range: Delay 75m, Spacing 15m, Gates 100
 Ave. Pulses: 84, Rng/Prof Aspect@90m/s: 5.7

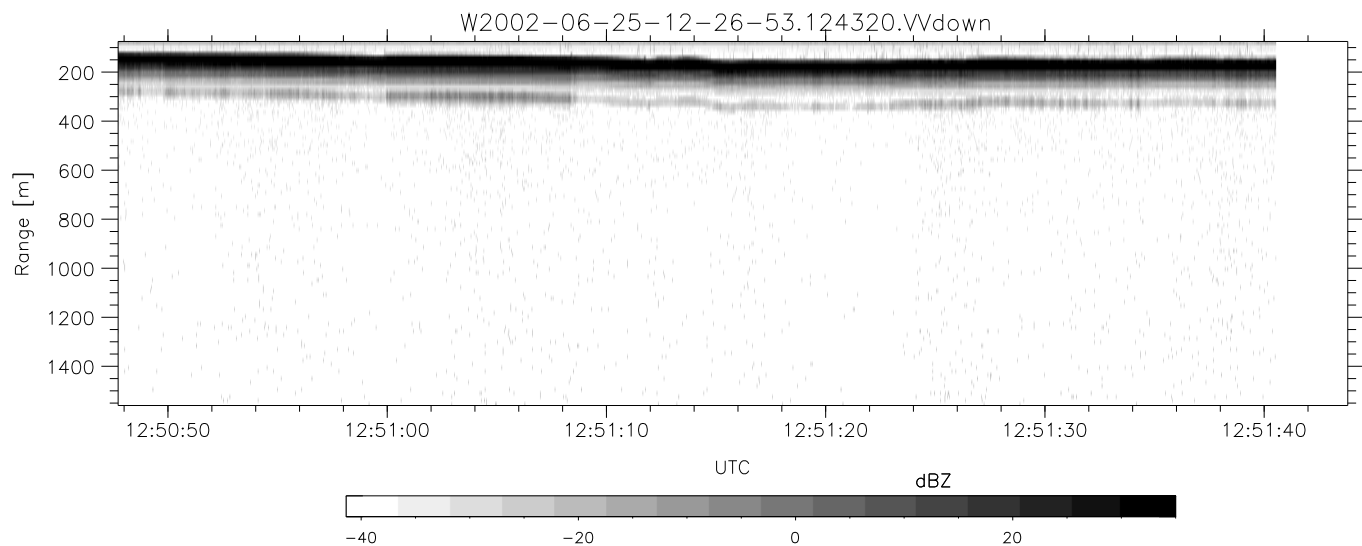
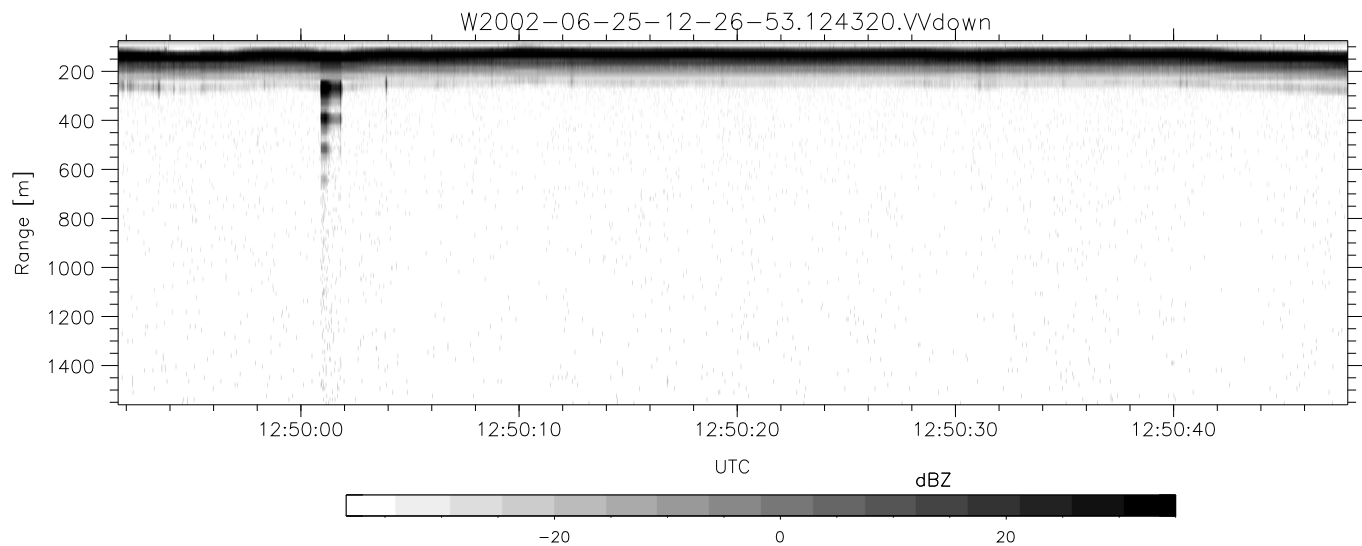
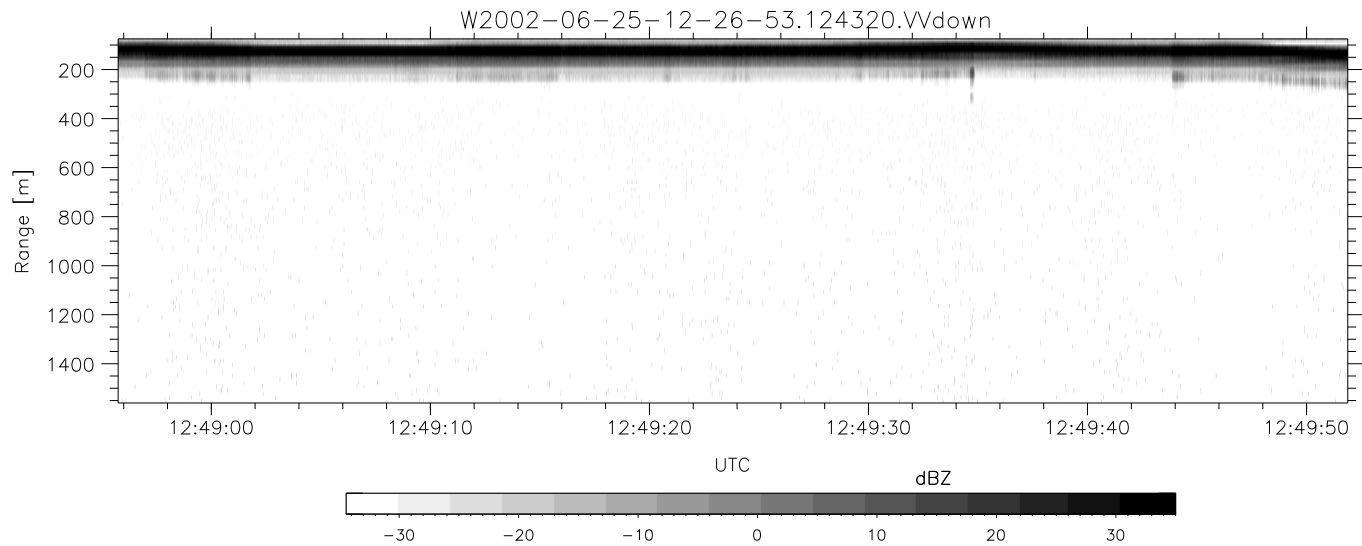
	Min	Max	Mean	Std	Varc%
hhN(dB)	-67.61	-64.21	-65.77	-75.85	9.8
vvN(dB)	-67.03	-63.13	-64.75	-74.79	9.9
hhL(dB)	-9.52	-3.16	-4.45	-13.24	13.2
vvL(dB)	-9.99	-0.60	-4.70	-9.34	34.4
ppN(m/s)	-12.70	12.68	-0.01	4.18	
ppT(m/s)	-100.3	100.15	-0.06	32.98	
hh/vv(dB)	-NaN	42.98	15.81	30.30	2812
vh/hh(dB)	-99.00	-99.00	-99.00	-99.00	-99.00
hv/vv(dB)	-NaN	-15.11	-47.09	-35.28	1516
hnjmp(dB)	-1.99	2.45	0.17	-8.48	13.7
vnjmp(dB)	-1.98	2.74	0.16	-8.36	14.1



IHOP 2002 (dual-antenna config, modes 1,3,4,7) Data (cal: 49.0,50.0)

W2002-06-25-12-26-53 - PPMAG4
 IRIG:1,UTC: 12:26:37.85 to 12:52:28.83, Dur: 1551s
 TimeLngth: 1550.98s, TimeInt: 29ms (34.1pps)
 TimeCor=-13.0s, DSPDif(mn,min,mx):29,28,368
 PPS(min,max,std): 24,36,2.29
 Prof: 415 to 53270, NumProf(t/r): 52855/17069
 ProcTime/Recs: 12:43:20-12:51:40/34138-51206
 MxACQtime: 33ms; DRate: 190.8KB/s; Flags: 0, 0, 0
 Pulse: 275ns, IFfilt: 5.0MHz; ppPol: HH HV VV
 TxPol: HHVV, PRF: 20 10 20 10 kHz
 Range: Delay 75m, Spacing 15m, Gates 100
 Ave. Pulses: 84, Rng/Prof Aspect@90m/s: 5.7

	Min	Max	Mean	Std	Varc%
hhN(dB)	-67.61	-64.21	-65.77	-75.85	9.8
vvN(dB)	-67.03	-63.13	-64.75	-74.79	9.9
hhL(dB)	-9.52	-3.16	-4.45	-13.24	13.2
vvL(dB)	-9.99	-0.60	-4.70	-9.34	34.4
ppN(m/s)	-12.70	12.68	-0.01	4.18	
ppT(m/s)	-100.3	100.15	-0.06	32.98	
hh/vv(dB)	-NaN	42.98	15.81	30.30	2812
vh/hh(dB)	-99.00	-99.00	-99.00	-99.00	-99.0
hv/vv(dB)	-NaN	-15.11	-47.09	-35.28	1516
hnjmp(dB)	-1.99	2.45	0.17	-8.48	13.7
vnjmp(dB)	-1.98	2.74	0.16	-8.36	14.1



IHOP 2002 (dual-antenna config, modes 1,3,4,7) Data (cal: 49.0,50.0)

W2002-06-25-12-26-53 - PPMAG4
 IRIG:1,UTC: 12:26:37.85 to 12:52:28.83, Dur: 1551s
 TimeLngth: 1550.98s, TimeInt: 29ms (34.1pps)
 TimeCor=-13.0s, DSPDif(mn,min,mx):29,28,368
 PPS(min,max,std): 24,36,2.29
 Prof: 415 to 53270, NumProf(t/r): 52855/17069
 ProcTime/Recs: 12:43:20-12:51:40/34138-51206
 MxACQtime: 33ms; DRate: 190.8KB/s; Flags: 0, 0, 0
 Pulse: 275ns, IFfilt: 5.0MHz; ppPol: HH HV VV
 TxPol: HHVV, PRF: 20 10 20 10 kHz
 Range: Delay 75m, Spacing 15m, Gates 100
 Ave. Pulses: 84, Rng/Prof Aspect@90m/s: 5.7

	Min	Max	Mean	Std	Varc%
hhN(dB)	-67.61	-64.21	-65.77	-75.85	9.8
vvN(dB)	-67.03	-63.13	-64.75	-74.79	9.9
hhL(dB)	-9.52	-3.16	-4.45	-13.24	13.2
vvL(dB)	-9.99	-0.60	-4.70	-9.34	34.4
ppN(m/s)	-12.70	12.68	-0.01	4.18	
ppT(m/s)	-100.3	100.15	-0.06	32.98	
hh/vv(dB)	-NaN	42.98	15.81	30.30	2812
vh/hh(dB)	-99.00	-99.00	-99.00	-99.00	-99.0
hv/vv(dB)	-NaN	-15.11	-47.09	-35.28	1516
hnjmp(dB)	-1.99	2.45	0.17	-8.48	13.7
vnjmp(dB)	-1.98	2.74	0.16	-8.36	14.1