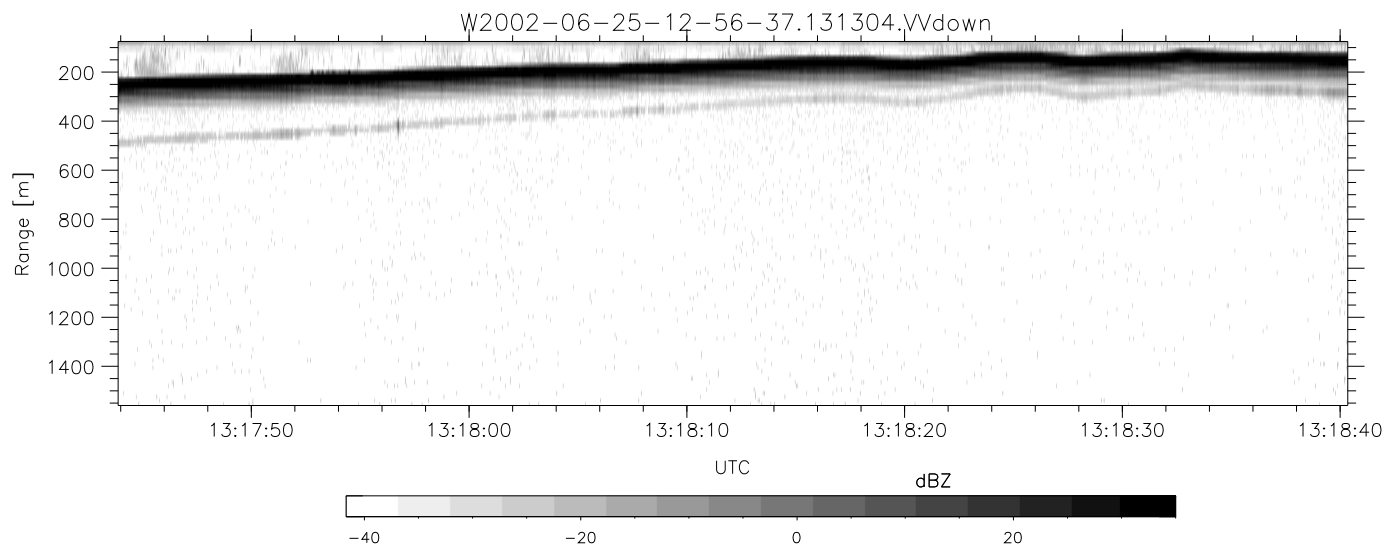
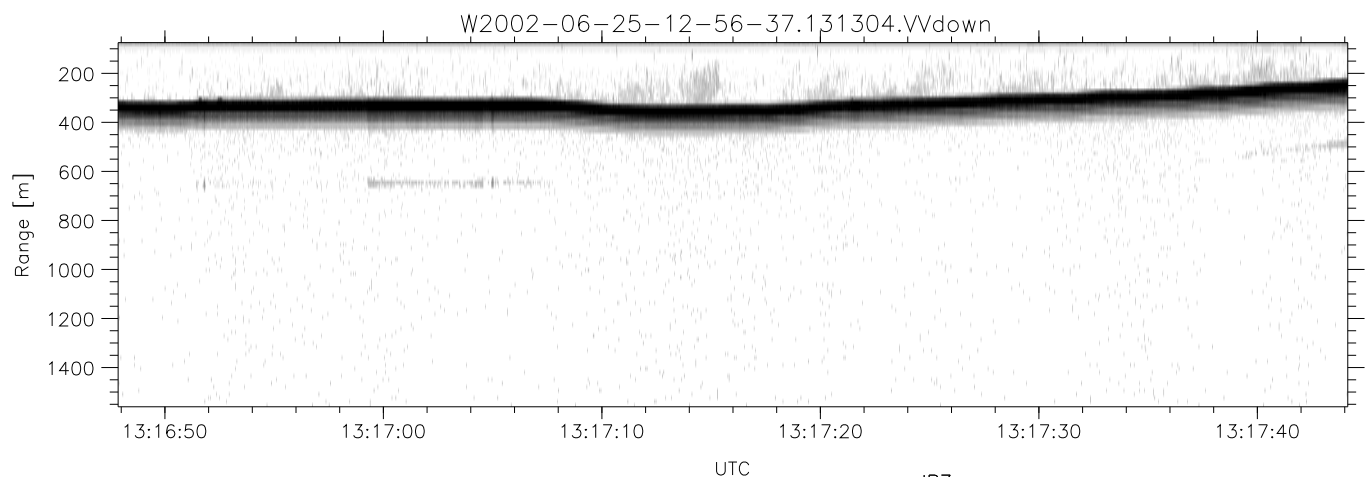
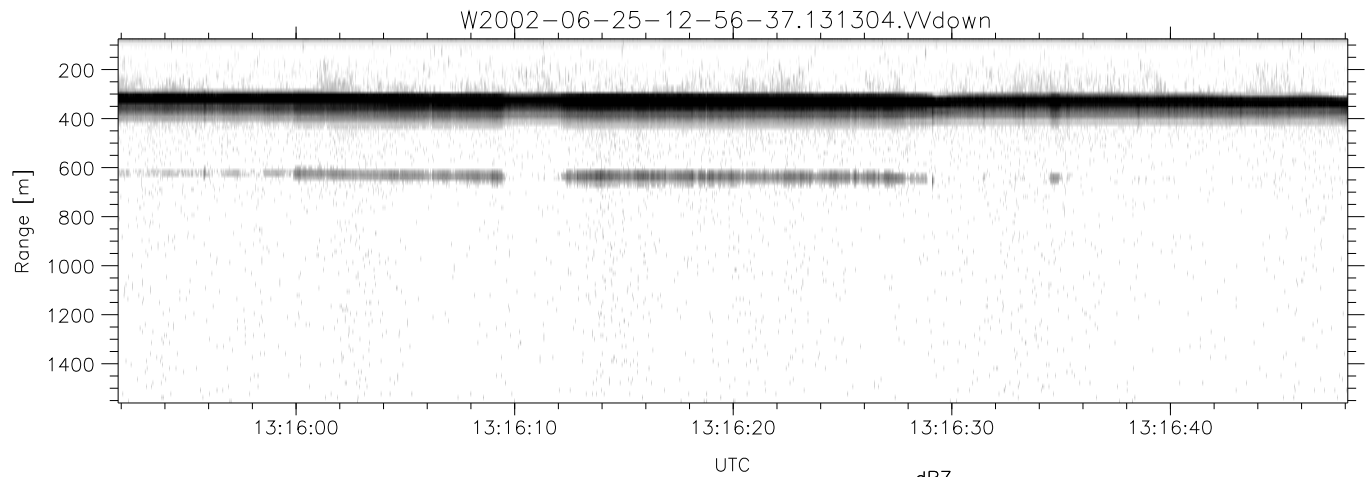


IHOP 2002 (dual-antenna config, modes 1,3,4,7) Data (cal: 49.0,50.0)

W2002-06-25-12-56-37 - PPMAG4
 IRIG:1,UTC: 12:56:22.40 to 13:20:29.65, Dur: 1447s
 TimeLngth: 1447.25s, TimeInt: 29ms (34.1pps)
 TimeCor=-13.0s, DSPDif(mn,min,mx):29,28,365
 PPS(min,max,std): 24,36,2.35
 Prof: 390 to 49719, NumProf(t/r): 49329/15191
 ProcTime/Recs: 13:13:04-13:20:29/34138-49328
 MxACQtime: 33ms; DRate: 190.8KB/s; Flags: 0, 0, 0
 Pulse: 275ns, IFfilt: 5.0MHz; ppPol: HH HV VV
 TxPol: HHVV, PRF: 20 10 20 10 kHz
 Range: Delay 75m, Spacing 15m, Gates 100
 Ave. Pulses: 84, Rng/Prof Aspect@90m/s: 5.7

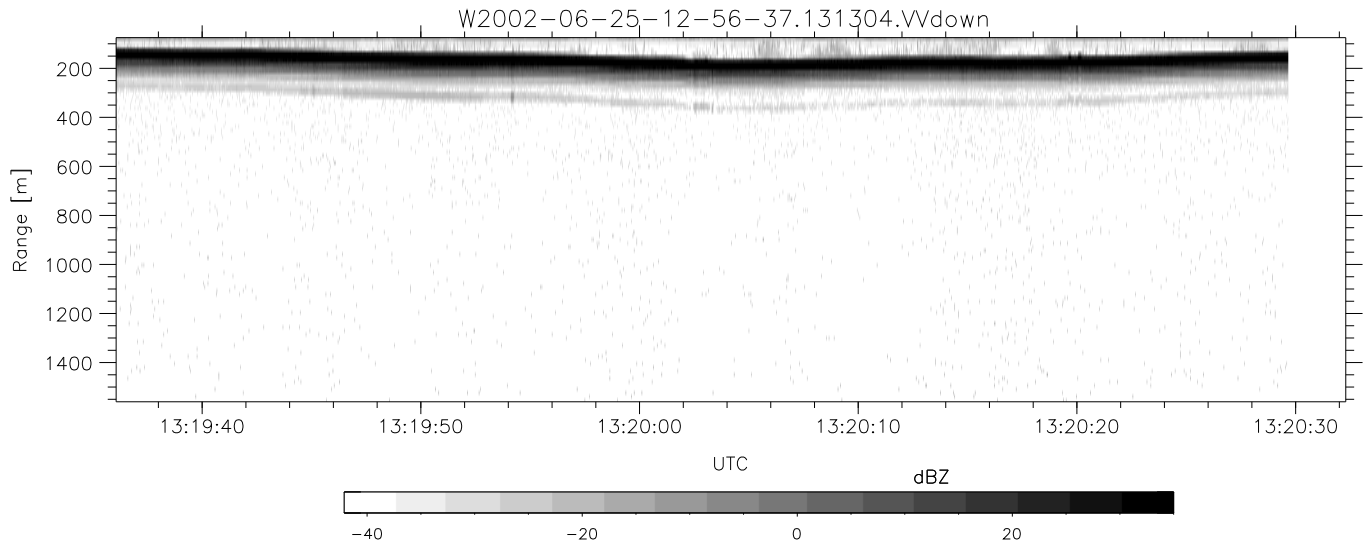
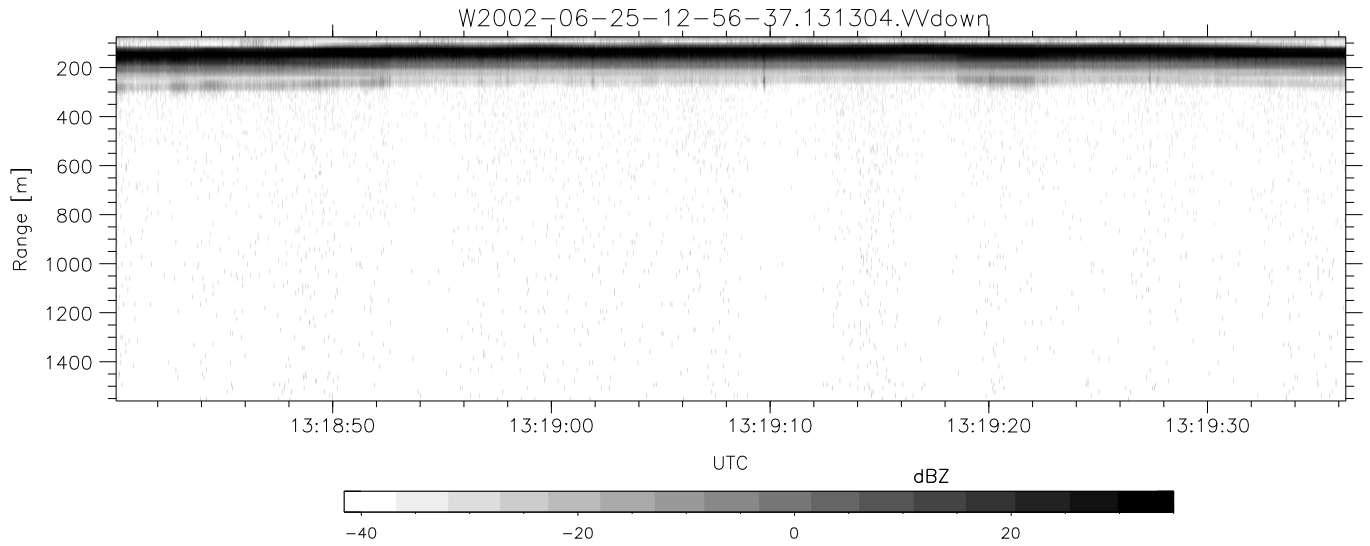
	Min	Max	Mean	Std	Varc%
hhN(dB)	-67.76	-64.44	-65.97	-76.02	9.9
vvN(dB)	-67.10	-63.36	-64.93	-75.01	9.8
hhL(dB)	-11.30	-4.23	-5.92	-13.92	15.9
vvL(dB)	-10.39	-0.83	-4.95	-9.79	32.8
ppN(m/s)	-12.55	12.43	-0.01	4.16	
ppT(m/s)	-99.15	98.20	-0.08	32.88	
hh/vv(dB)	-NaN	32.82	13.64	22.77	820.
vh/hh(dB)	-99.00	-99.00	-99.00	-99.00	-99.
hv/vv(dB)	-NaN	-34.54	-51.95	-46.14	381.
hnjmp(dB)	-2.47	2.03	-0.10	-8.73	13.7
vnjmp(dB)	-2.43	2.05	-0.09	-8.71	13.7



IHOP 2002 (dual-antenna config, modes 1,3,4,7) Data (cal: 49.0,50.0)

W2002-06-25-12-56-37 - PPMAG4
 IRIG:1,UTC: 12:56:22.40 to 13:20:29.65, Dur: 1447s
 TimeLngth: 1447.25s, TimeInt: 29ms (34.1pps)
 TimeCor=-13.0s, DSPDif(mn,min,mx):29,28,365
 PPS(min,max,std): 24,36,2.35
 Prof: 390 to 49719, NumProf(t/r): 49329/15191
 ProcTime/Recs: 13:13:04-13:20:29/34138-49328
 MxACQtime: 33ms; DRate: 190.8KB/s; Flags: 0, 0, 0
 Pulse: 275ns, IFilt: 5.0MHz; ppPol: HH HV VV
 TxPol: HHVV, PRF: 20 10 20 10 kHz
 Range: Delay 75m, Spacing 15m, Gates 100
 Ave. Pulses: 84, Rng/Prof Aspect@90m/s: 5.7

	Min	Max	Mean	Std	Varc%
hhN(dB)	-67.76	-64.44	-65.97	-76.02	9.9
vvN(dB)	-67.10	-63.36	-64.93	-75.01	9.8
hhL(dB)	-11.30	-4.23	-5.92	-13.92	15.9
vvL(dB)	-10.39	-0.83	-4.95	-9.79	32.8
ppN(m/s)	-12.55	12.43	-0.01	4.16	
ppT(m/s)	-99.15	98.20	-0.08	32.88	
hh/vv(dB)	-NaN	32.82	13.64	22.77	820.
vh/hh(dB)	-99.00	-99.00	-99.00	-99.00	-99.
hv/vv(dB)	-NaN	-34.54	-51.95	-46.14	381.
hnjmp(dB)	-2.47	2.03	-0.10	-8.73	13.7
vnjmp(dB)	-2.43	2.05	-0.09	-8.71	13.7



IHOP 2002 (dual-antenna config, modes 1,3,4,7) Data (cal: 49.0,50.0)

W2002-06-25-12-56-37 - PPMAG4						
IRIG:1,UTC: 12:56:22.40 to 13:20:29.65, Dur: 1447s	hhN (dB)	Min	Max	Mean	Std	Varc%
TimeLngth: 1447.25s, TimeInt: 29ms (34.1pps)	vvN (dB)	-67.10	-63.36	-64.93	-75.01	9.8
TimeCor=-13.0s, DSPDif(mn,min,mx):29,28,365	hhL (dB)	-11.30	-4.23	-5.92	-13.92	15.9
PPS(min,max,std): 24,36,2.35	vvL (dB)	-10.39	-0.83	-4.95	-9.79	32.8
Prof: 390 to 49719, NumProf(t/r): 49329/15191	ppN (m/s)	-12.55	12.43	-0.01	4.16	
ProcTime/Recs: 13:13:04-13:20:29/34138-49328	ppT (m/s)	-99.15	98.20	-0.08	32.88	
MxACQtime: 33ms; DRate: 190.8KB/s; Flags: 0, 0, 0	hh/vv (dB)	-NaN	32.82	13.64	22.77	820.
Pulse: 275ns, IFilt: 5.0MHz; ppPol: HH HV VV	vh/hh (dB)	-99.00	-99.00	-99.00	-99.00	-99.
TxPol: HHVV, PRF: 20 10 20 10 kHz	hv/vv (dB)	-NaN	-34.54	-51.95	-46.14	381.
Range: Delay 75m, Spacing 15m, Gates 100	hnjmp (dB)	-2.47	2.03	-0.10	-8.73	13.7
Ave. Pulses: 84, Rng/Prof Aspect@90m/s: 5.7	vnjmp (dB)	-2.43	2.05	-0.09	-8.71	13.7