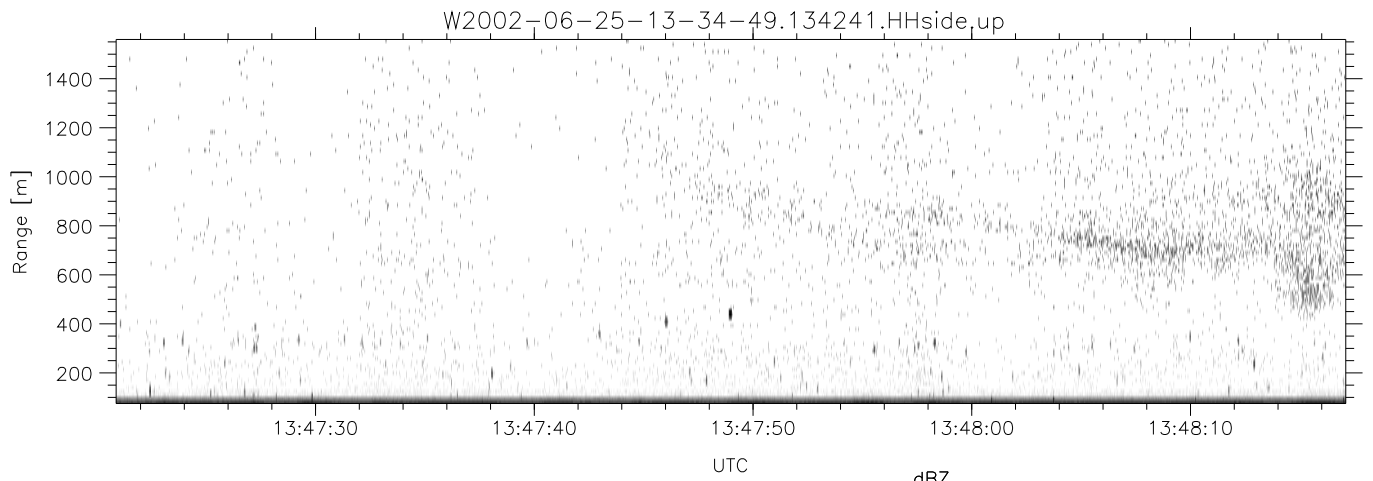
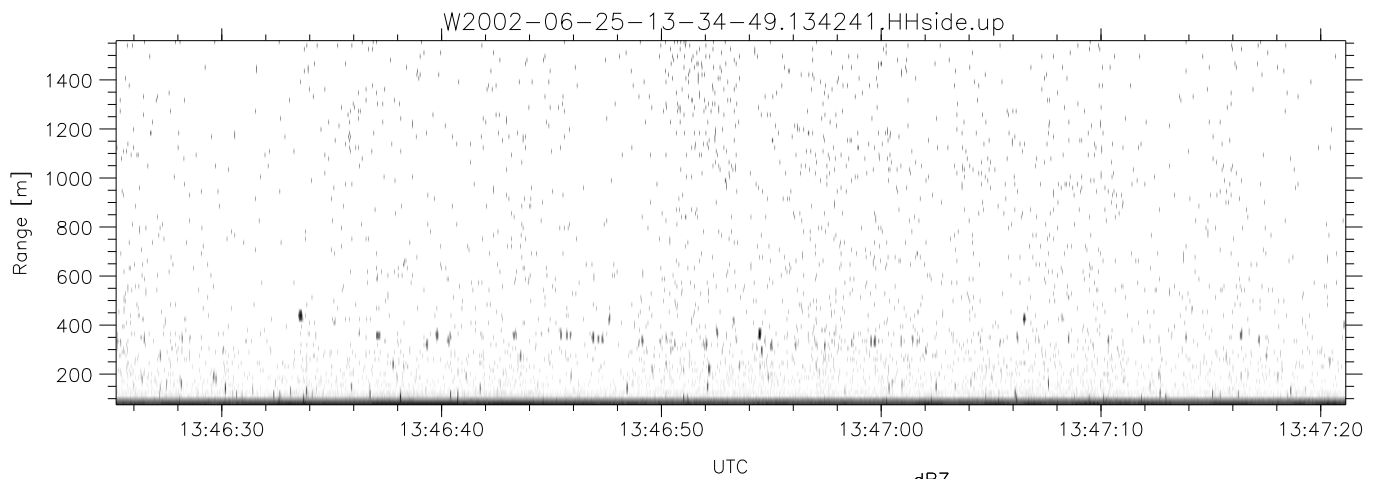
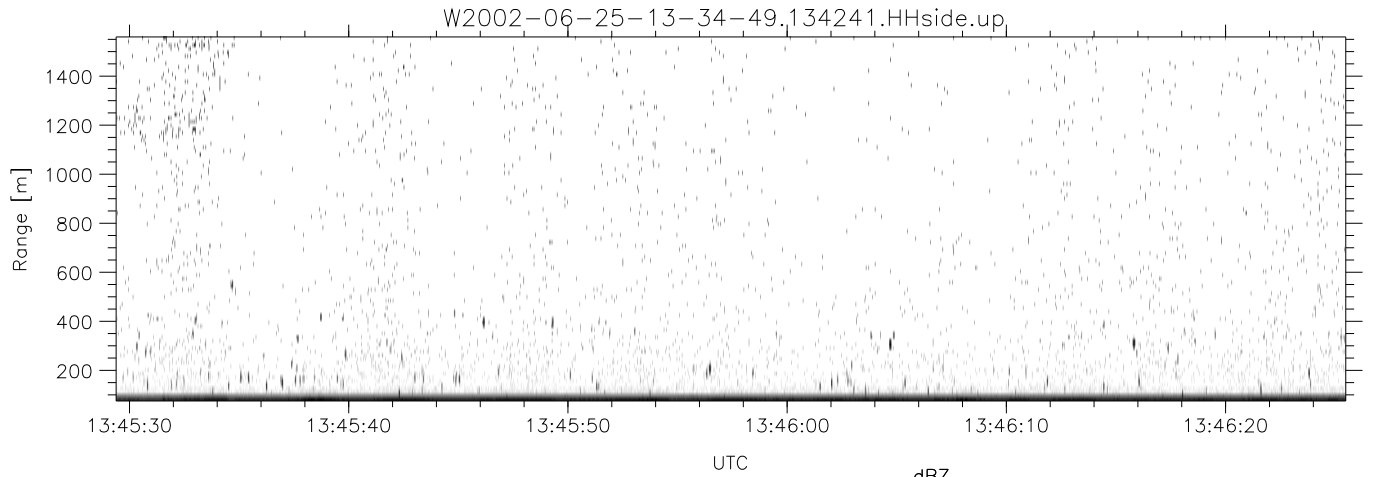


IHOP 2002 (dual-antenna config, modes 1,3,4,7) Data (cal: 49.0,50.0)

W2002-06-25-13-34-49 - PPMAG4  
 IRIG:1,UTC: 13:34:34.16 to 15:04:05.92, Dur: 5371s  
 TimeLngth: 5371.76s, TimeInt: 29ms (34.0pps)  
 TimeCor=-13.0s, DSPDif(mn,min,mx):29,28,321  
 PPS(min,max,std): 23,36,2.40  
 Prof: 742 to 183151, NumProf(t/r): 182409/16567  
 ProcTime/Recs: 13:42:41-13:50:48/16567-33133  
 MxACQtime: 33ms; DRate: 190.1KB/s; Flags: 0, 0, 0  
 Pulse: 275ns, IFfilt: 5.0MHz; ppPol: HH HV VV  
 TxPol: HHVV, PRF: 20 10 20 10 kHz  
 Range: Delay 75m, Spacing 15m, Gates 100  
 Ave. Pulses: 84, Rng/Prof Aspect@90m/s: 5.7

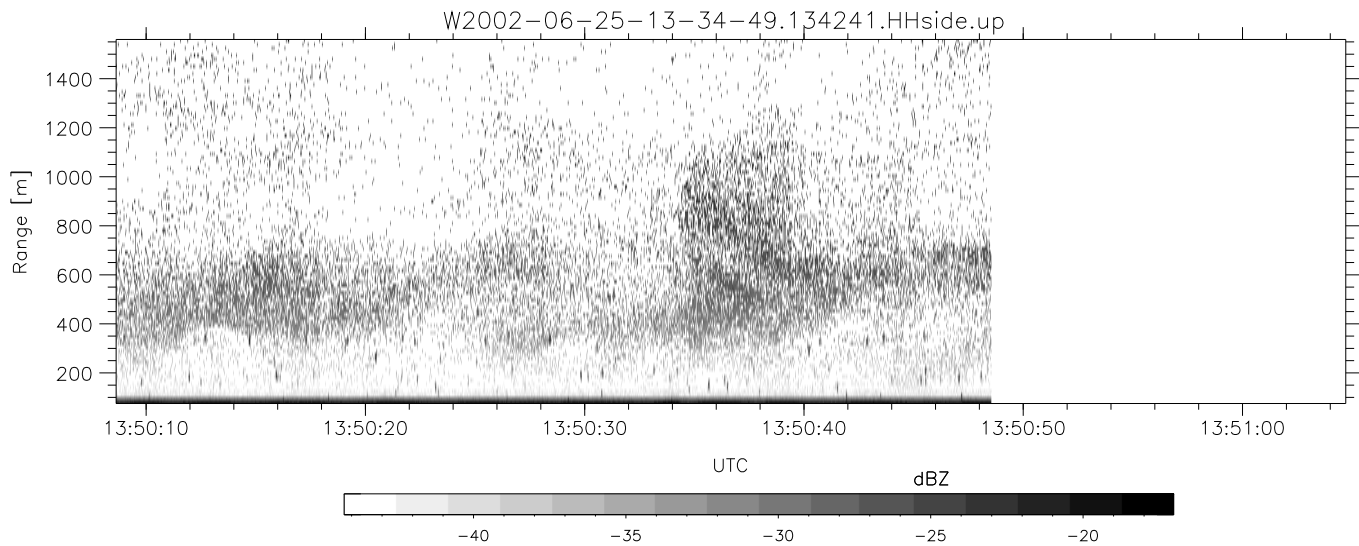
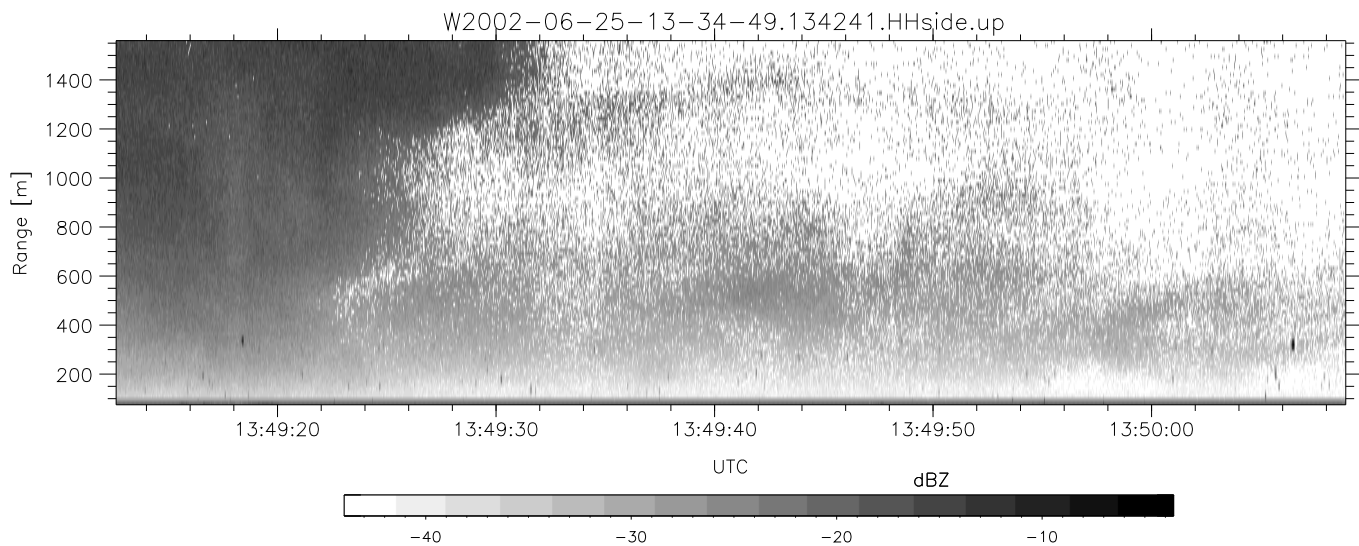
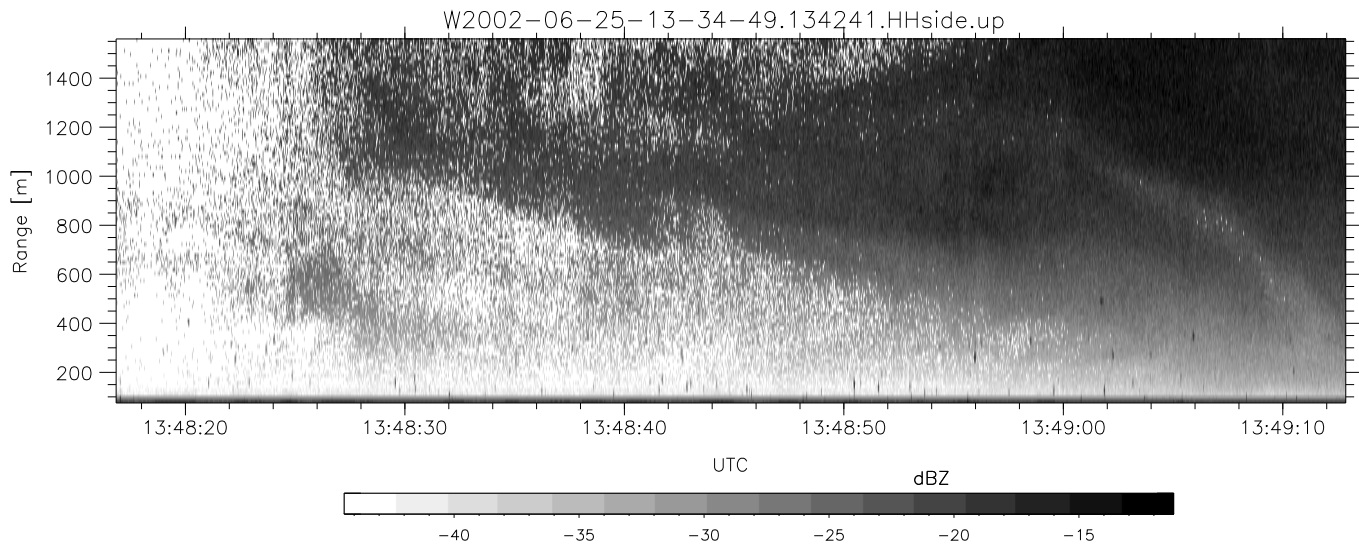
	Min	Max	Mean	Std	Varc%
hhN(dB)	-67.95	-64.50	-66.13	-76.14	10.0
vvN(dB)	-66.85	-63.35	-65.06	-74.97	10.2
hhL(dB)	-12.58	-4.47	-6.69	-13.75	19.7
vvL(dB)	-9.76	-1.82	-4.76	-10.73	25.3
ppN(m/s)	-12.70	12.90	0.02	4.14	
ppT(m/s)	-100.3	101.95	0.16	32.69	
hh/vv(dB)	-NaN	34.08	-NaN	38.75	-180
vh/hh(dB)	-99.00	-99.00	-99.00	-99.00	-99.
hv/vv(dB)	-NaN	-30.81	-51.25	-45.77	352.
hnjmp(dB)	-2.43	2.19	0.18	-8.35	14.0
vnjmp(dB)	-2.17	2.40	0.17	-8.35	14.1



IHOP 2002 (dual-antenna config, modes 1,3,4,7) Data (cal: 49.0,50.0)

W2002-06-25-13-34-49 - PPMAG4  
 IRIG:1,UTC: 13:34:34.16 to 15:04:05.92, Dur: 5371s  
 TimeLngth: 5371.76s, TimeInt: 29ms (34.0pps)  
 TimeCor=-13.0s, DSPDif(mn,min,mx):29,28,321  
 PPS(min,max,std): 23,36,2.40  
 Prof: 742 to 183151, NumProf(t/r): 182409/16567  
 ProcTime/Recs: 13:42:41-13:50:48/16567-33133  
 MxACQtime: 33ms; DRate: 190.1KB/s; Flags: 0, 0, 0  
 Pulse: 275ns, IFfilt: 5.0MHz; ppPol: HH HV VV  
 TxPol: HHVV, PRF: 20 10 20 10 kHz  
 Range: Delay 75m, Spacing 15m, Gates 100  
 Ave. Pulses: 84, Rng/Prof Aspect@90m/s: 5.7

	Min	Max	Mean	Std	Varc%
hhN(dB)	-67.95	-64.50	-66.13	-76.14	10.0
vvN(dB)	-66.85	-63.35	-65.06	-74.97	10.2
hhL(dB)	-12.58	-4.47	-6.69	-13.75	19.7
vvL(dB)	-9.76	-1.82	-4.76	-10.73	25.3
ppN(m/s)	-12.70	12.90	0.02	4.14	
ppT(m/s)	-100.3	101.95	0.16	32.69	
hh/vv(dB)	-NaN	34.08	-NaN	38.75	-180
vh/hh(dB)	-99.00	-99.00	-99.00	-99.00	-99.
hv/vv(dB)	-NaN	-30.81	-51.25	-45.77	352.
hnjmp(dB)	-2.43	2.19	0.18	-8.35	14.0
vnjmp(dB)	-2.17	2.40	0.17	-8.35	14.1



IHOP 2002 (dual-antenna config, modes 1,3,4,7) Data (cal: 49.0,50.0)

W2002-06-25-13-34-49 - PPMAG4	Min	Max	Mean	Std	Varc%	
IRIG:1,UTC: 13:34:34.16 to 15:04:05.92, Dur: 5371s	hhN (dB)	-67.95	-64.50	-66.13	-76.14	10.0
TimeLngth: 5371.76s, TimeInt: 29ms (34.0pps)	vvN (dB)	-66.85	-63.35	-65.06	-74.97	10.2
TimeCor=-13.0s, DSPDif(mn,min,mx):29,28,321	hhL (dB)	-12.58	-4.47	-6.69	-13.75	19.7
PPS(min,max,std): 23,36,2.40	vvL (dB)	-9.76	-1.82	-4.76	-10.73	25.3
Prof: 742 to 183151, NumProf(t/r): 182409/16567	ppN (m/s)	-12.70	12.90	0.02	4.14	
ProcTime/Recs: 13:42:41-13:50:48/16567-33133	ppT (m/s)	-100.3	101.95	0.16	32.69	
MxAcQtime: 33ms; DRate: 190.1KB/s; Flags: 0, 0, 0	hh/vv (dB)	-NaN	34.08	-NaN	38.75	-180
Pulse: 275ns, IFfilt: 5.0MHz; ppPol: HH HV VV	vh/hh (dB)	-99.00	-99.00	-99.00	-99.00	-99.
TxPol: HHVV, PRF: 20 10 20 10 kHz	hv/vv (dB)	-NaN	-30.81	-51.25	-45.77	352.
Range: Delay 75m, Spacing 15m, Gates 100	hnjmp (dB)	-2.43	2.19	0.18	-8.35	14.0
Ave. Pulses: 84, Rng/Prof Aspect@90m/s: 5.7	vnjmp (dB)	-2.17	2.40	0.17	-8.35	14.1