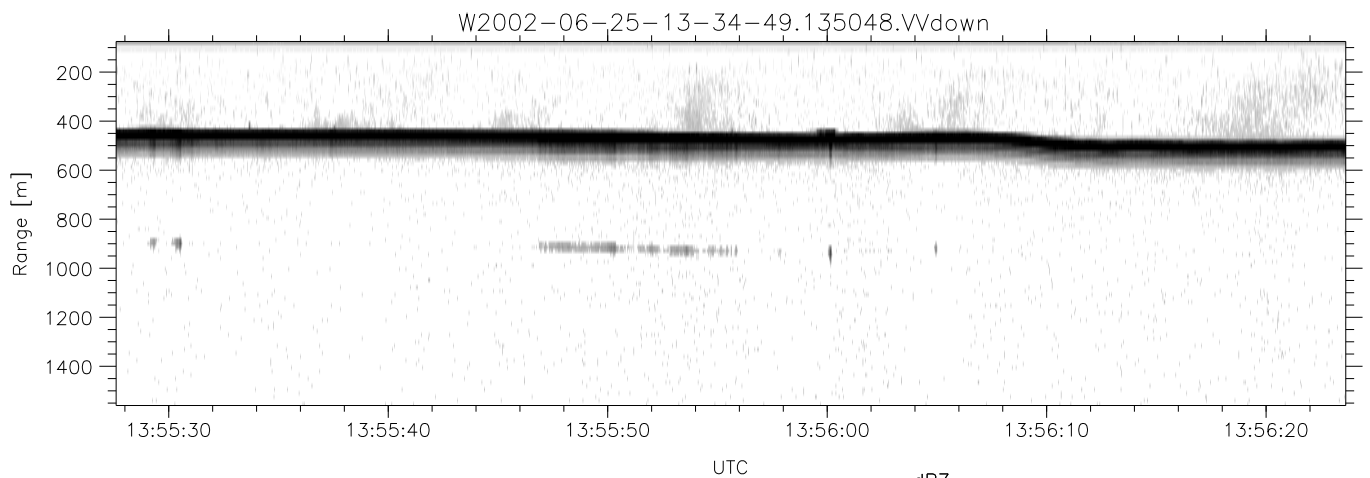
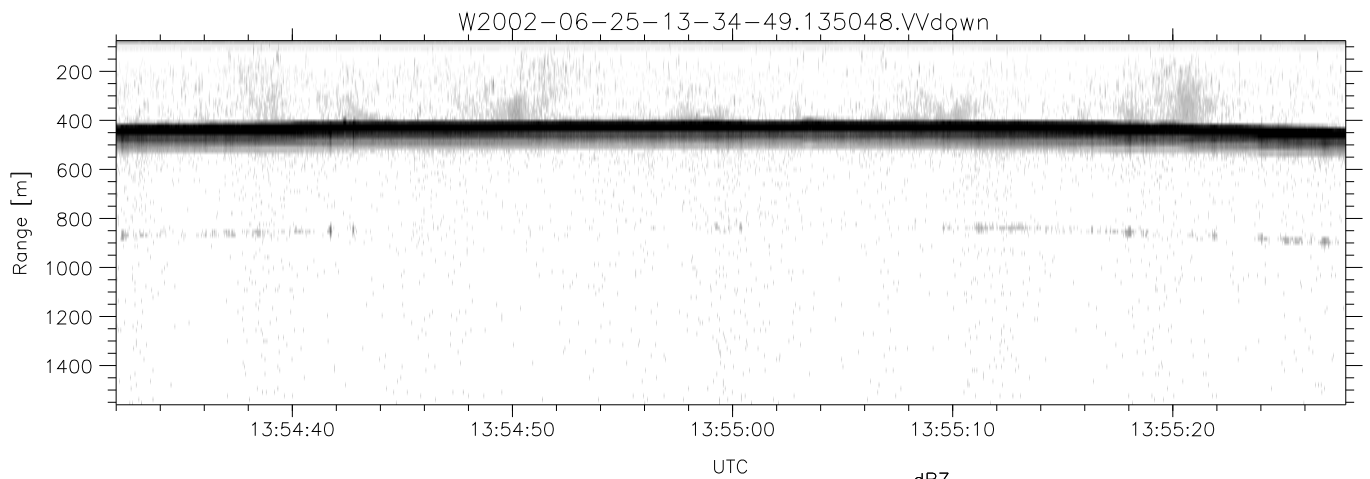
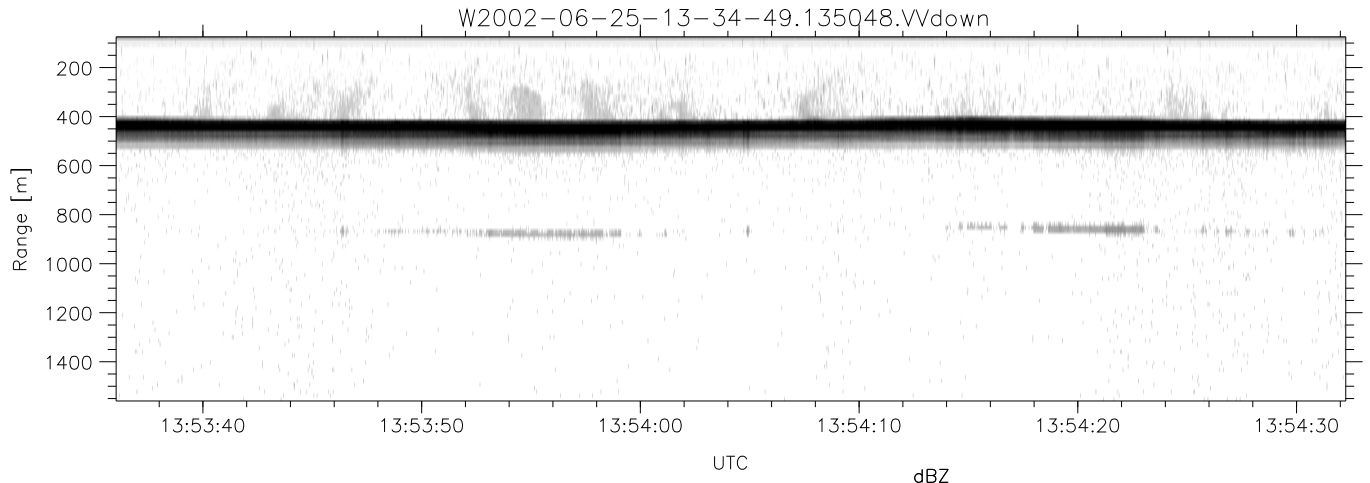


IHOP 2002 (dual-antenna config, modes 1,3,4,7) Data (cal: 49.0,50.0)

W2002-06-25-13-34-49 - PPMAG4  
 IRIG:1,UTC: 13:34:34.16 to 15:04:05.92, Dur: 5371s  
 TimeLngth: 5371.76s, TimeInt: 29ms (34.0pps)  
 TimeCor=-13.0s, DSPDif(mn,min,mx):29,28,379  
 PPS(min,max,std): 23,36,2.29  
 Prof: 742 to 183151, NumProf(t/r): 182409/16567  
 ProcTime/Recs: 13:50:48-13:58:54/33134-49700  
 MxAcQtime: 33ms; DRate: 190.1KB/s; Flags: 0, 0, 0  
 Pulse: 275ns, IFfilt: 5.0MHz; ppPol: HH HV VV  
 TxPol: HHVV, PRF: 20 10 20 10 kHz  
 Range: Delay 75m, Spacing 15m, Gates 100  
 Ave. Pulses: 84, Rng/Prof Aspect@90m/s: 5.7

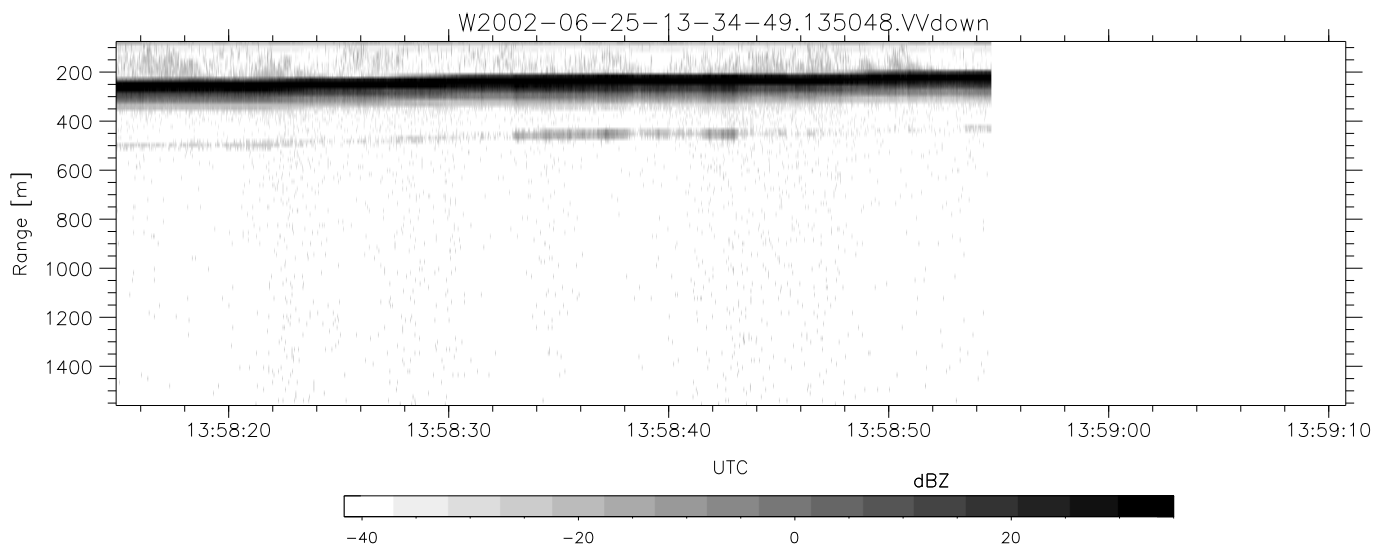
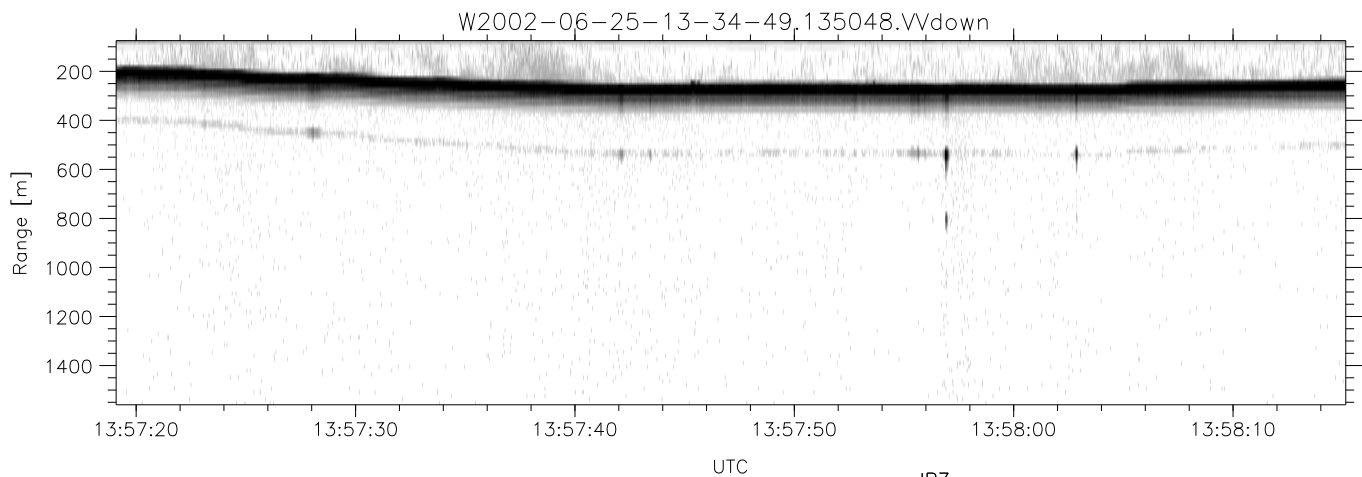
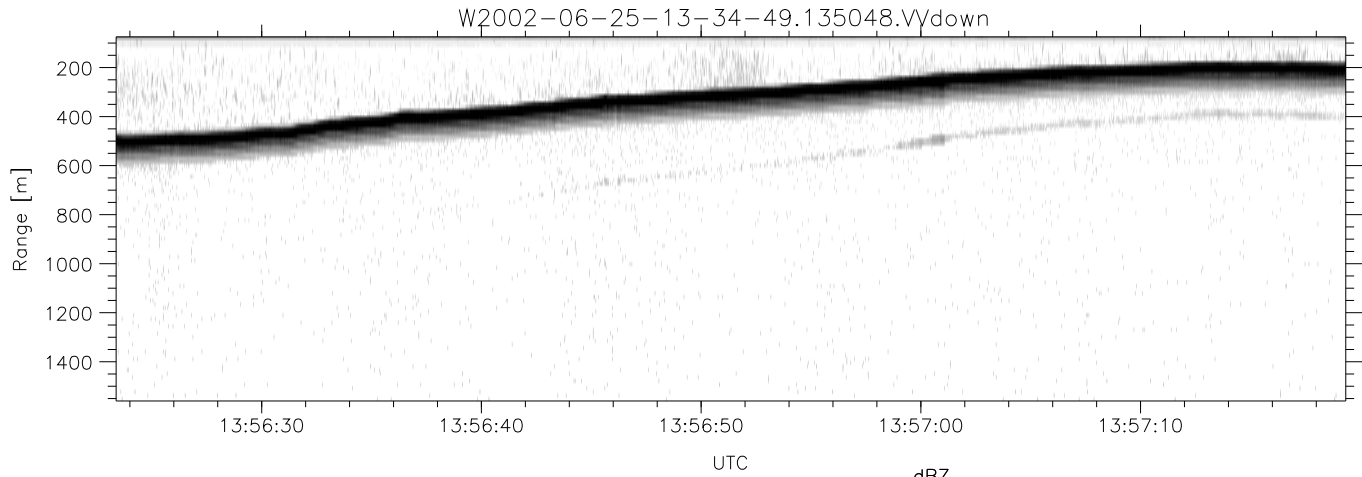
	Min	Max	Mean	Std	Varc%
hhN(dB)	-67.77	-64.45	-66.16	-76.22	9.9
vvN(dB)	-66.72	-63.63	-65.08	-75.09	10.0
hhL(dB)	-10.29	-4.40	-6.71	-15.56	13.0
vvL(dB)	-8.73	-2.11	-4.82	-11.80	20.0
ppN(m/s)	-12.40	12.90	-0.04	4.15	
ppT(m/s)	-97.99	101.95	-0.29	32.80	
hh/vv(dB)	-NaN	45.68	22.52	32.82	1071
vh/hh(dB)	-99.00	-99.00	-99.00	-99.00	-99.
hv/vv(dB)	-NaN	-35.22	-54.80	-47.56	529.
hnjmp(dB)	-2.41	2.94	-0.09	-8.67	13.9
vnjmp(dB)	-2.39	2.40	-0.09	-8.63	14.0



IHOP 2002 (dual-antenna config, modes 1,3,4,7) Data (cal: 49.0,50.0)

W2002-06-25-13-34-49 - PPMAG4  
 IRIG:1,UTC: 13:34:34.16 to 15:04:05.92, Dur: 5371s  
 TimeLngth: 5371.76s, TimeInt: 29ms (34.0pps)  
 TimeCor=-13.0s, DSPDif(mn,min,mx):29,28,379  
 PPS(min,max,std): 23,36,2.29  
 Prof: 742 to 183151, NumProf(t/r): 182409/16567  
 ProcTime/Recs: 13:50:48-13:58:54/33134-49700  
 MxACQtime: 33ms; DRate: 190.1KB/s; Flags: 0, 0, 0  
 Pulse: 275ns, IFilt: 5.0MHz; ppPol: HH HV VV  
 TxPol: HHVV, PRF: 20 10 20 10 kHz  
 Range: Delay 75m, Spacing 15m, Gates 100  
 Ave. Pulses: 84, Rng/Prof Aspect@90m/s: 5.7

	Min	Max	Mean	Std	Varc%
hhN(dB)	-67.77	-64.45	-66.16	-76.22	9.9
vvN(dB)	-66.72	-63.63	-65.08	-75.09	10.0
hhL(dB)	-10.29	-4.40	-6.71	-15.56	13.0
vvL(dB)	-8.73	-2.11	-4.82	-11.80	20.0
ppN(m/s)	-12.40	12.90	-0.04	4.15	
ppT(m/s)	-97.99	101.95	-0.29	32.80	
hh/vv(dB)	-NaN	45.68	22.52	32.82	1071
vh/hh(dB)	-99.00	-99.00	-99.00	-99.00	-99.
hv/vv(dB)	-NaN	-35.22	-54.80	-47.56	529.
hnjmp(dB)	-2.41	2.94	-0.09	-8.67	13.9
vnjmp(dB)	-2.39	2.40	-0.09	-8.63	14.0



IHOP 2002 (dual-antenna config, modes 1,3,4,7) Data (cal: 49.0,50.0)

W2002-06-25-13-34-49 - PPMAG4  
 IRIG:1,UTC: 13:34:34.16 to 15:04:05.92, Dur: 5371s  
 TimeLngth: 5371.76s, TimeInt: 29ms (34.0pps)  
 TimeCor=-13.0s, DSPDif(mn,min,mx):29,28,379  
 PPS(min,max,std): 23,36,2.29  
 Prof: 742 to 183151, NumProf(t/r): 182409/16567  
 ProcTime/Recs: 13:50:48-13:58:54/33134-49700  
 MxACQtime: 33ms; DRate: 190.1KB/s; Flags: 0, 0, 0  
 Pulse: 275ns, IFfilt: 5.0MHz; ppPol: HH HV VV  
 TxPol: HHVV, PRF: 20 10 20 10 kHz  
 Range: Delay 75m, Spacing 15m, Gates 100  
 Ave. Pulses: 84, Rng/Prof Aspect@90m/s: 5.7

	Min	Max	Mean	Std	Varc%
hhN(dB)	-67.77	-64.45	-66.16	-76.22	9.9
vvN(dB)	-66.72	-63.63	-65.08	-75.09	10.0
hhL(dB)	-10.29	-4.40	-6.71	-15.56	13.0
vvL(dB)	-8.73	-2.11	-4.82	-11.80	20.0
ppN(m/s)	-12.40	12.90	-0.04	4.15	
ppT(m/s)	-97.99	101.95	-0.29	32.80	
hh/vv(dB)	-NaN	45.68	22.52	32.82	1071
vh/hh(dB)	-99.00	-99.00	-99.00	-99.00	-99.
hv/vv(dB)	-NaN	-35.22	-54.80	-47.56	529.
hnjmp(dB)	-2.41	2.94	-0.09	-8.67	13.9
vnjmp(dB)	-2.39	2.40	-0.09	-8.63	14.0