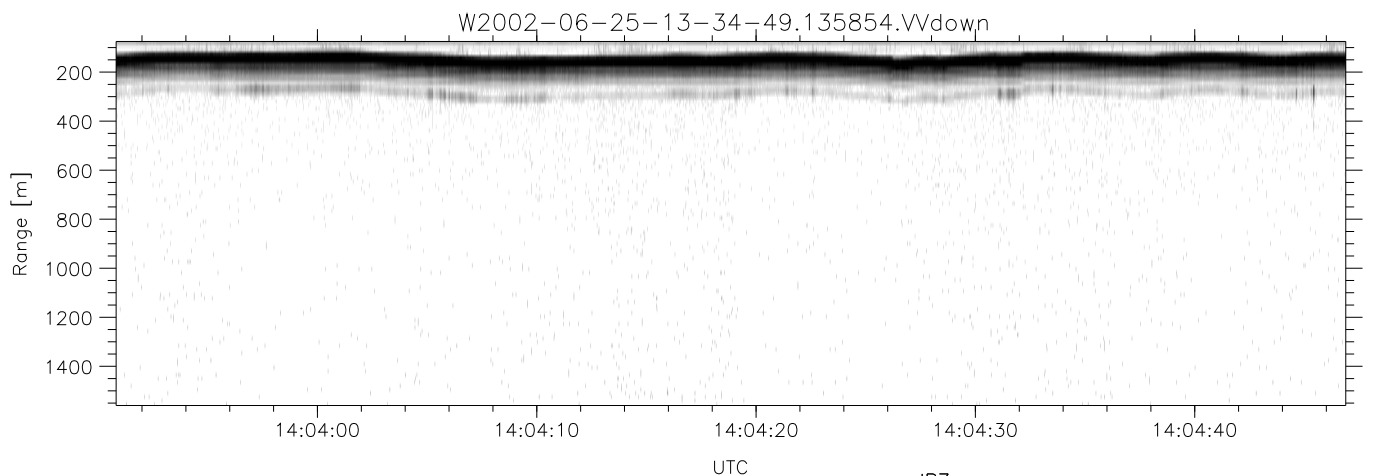
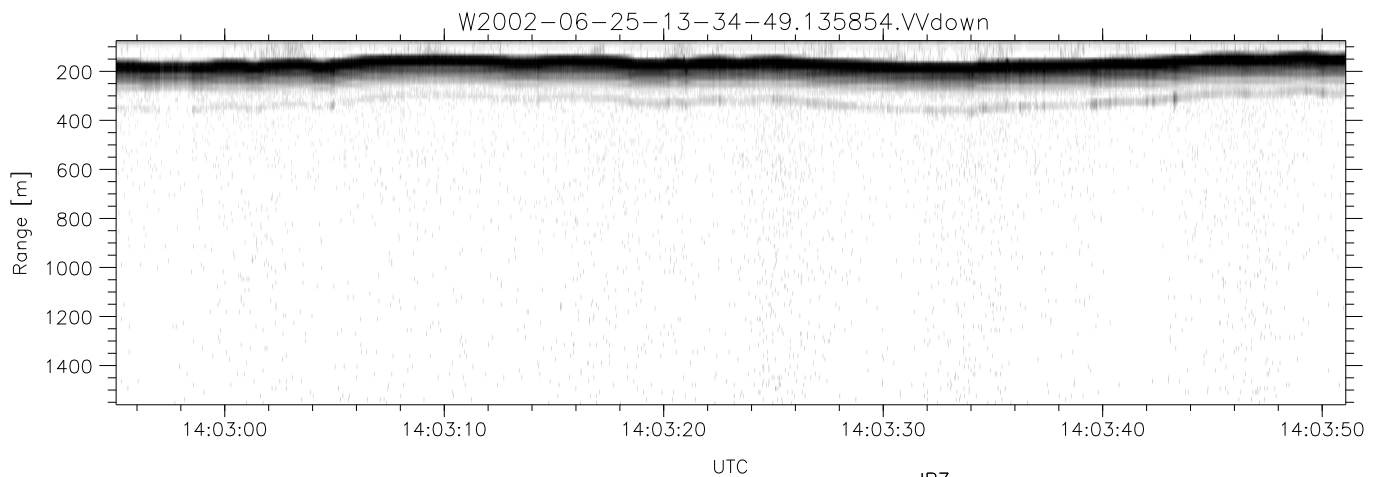
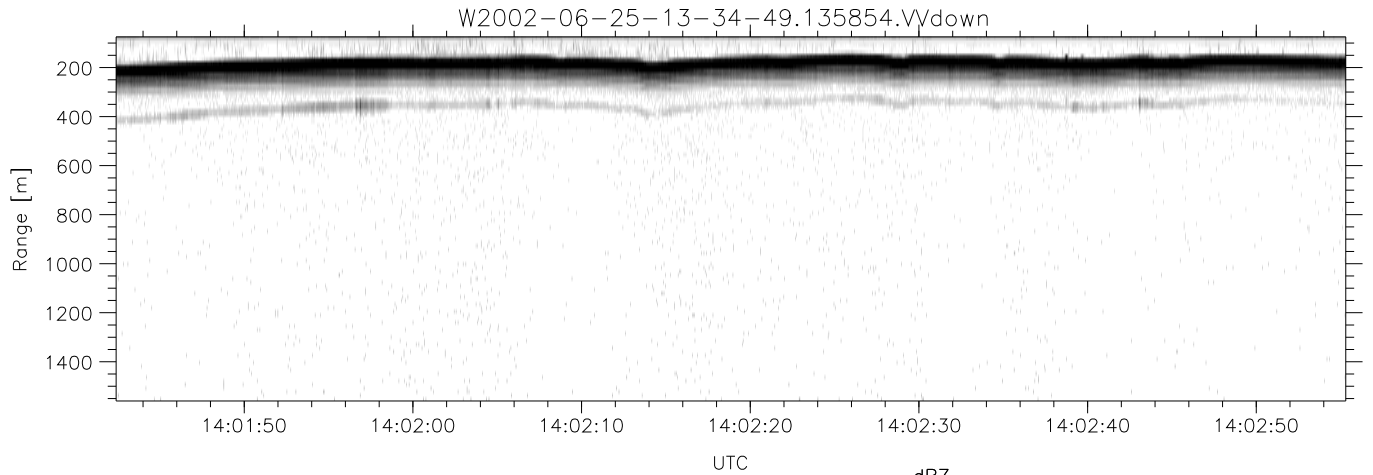


IHOP 2002 (dual-antenna config, modes 1,3,4,7) Data (cal: 49.0,50.0)

W2002-06-25-13-34-49 - PPMAG4
 IRIG:1,UTC: 13:34:34.16 to 15:04:05.92, Dur: 5371s
 TimeLngth: 5371.76s, TimeInt: 29ms (34.0pps)
 TimeCor=-13.0s, DSPDif(mn,min,mx):30,28,374
 PPS(min,max,std): 12,36,3.89
 Prof: 742 to 183151, NumProf(t/r): 182409/16567
 ProcTime/Recs: 13:58:54-14:07:17/49701-66267
 MxACQtime: 33ms; DRate: 190.1KB/s; Flags: 0, 0, 0
 Pulse: 275ns, IFfilt: 5.0MHz; ppPol: HH HV VV
 TxPol: HHVV, PRF: 20 10 20 10 kHz
 Range: Delay 75m, Spacing 15m, Gates 100
 Ave. Pulses: 84, Rng/Prof Aspect@90m/s: 5.7

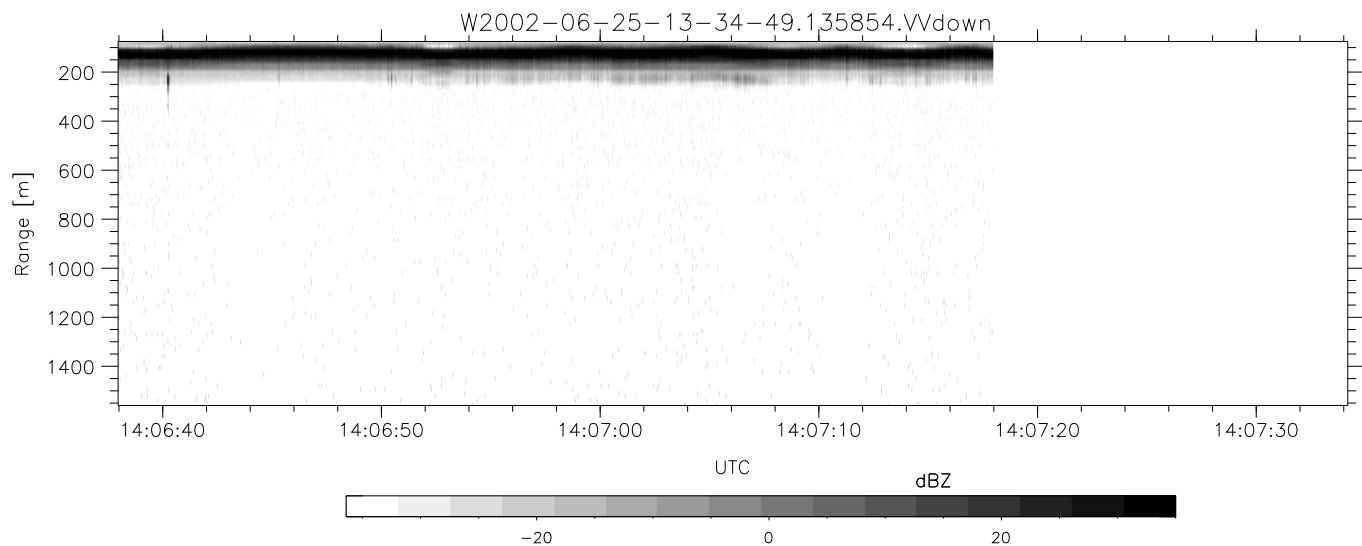
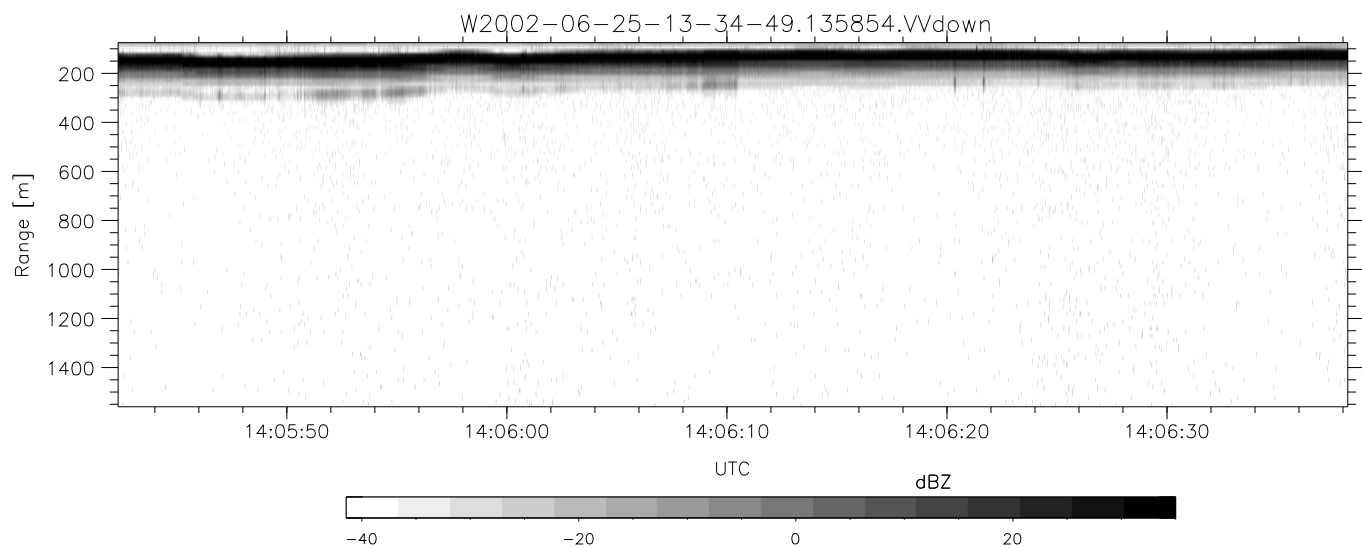
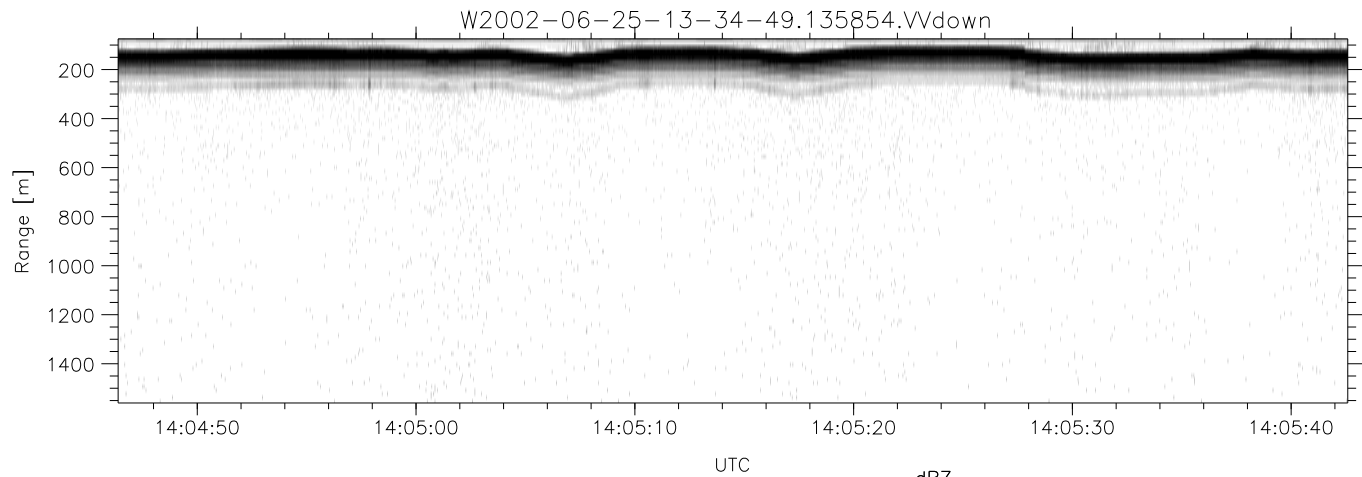
	Min	Max	Mean	Std	Varc%
hhN(dB)	-67.97	-64.64	-66.21	-76.22	10.0
vvN(dB)	-66.98	-63.54	-65.15	-75.16	10.0
hhL(dB)	-11.70	-5.46	-7.14	-13.31	24.1
vvL(dB)	-8.93	-2.04	-5.70	-10.37	34.1
ppN(m/s)	-12.70	12.51	0.01	4.16	
ppT(m/s)	-100.3	98.86	0.09	32.83	
hh/vv(dB)	-NaN	44.94	-NaN	40.54	-410
vh/hh(dB)	-43.39	-15.79	-22.72	-19.82	194.
hv/vv(dB)	-NaN	-20.80	-49.98	-43.87	408.
hnjmp(dB)	-1.99	2.61	0.17	-8.32	14.1
vnjmp(dB)	-2.25	2.40	0.17	-8.41	13.9



IHOP 2002 (dual-antenna config, modes 1,3,4,7) Data (cal: 49.0,50.0)

W2002-06-25-13-34-49 - PPMAG4
 IRIG:1,UTC: 13:34:34.16 to 15:04:05.92, Dur: 5371s
 TimeLngth: 5371.76s, TimeInt: 29ms (34.0pps)
 TimeCor=-13.0s, DSPDif(mn,min,mx):30,28,374
 PPS(min,max,std): 12,36,3.89
 Prof: 742 to 183151, NumProf(t/r): 182409/16567
 ProcTime/Recs: 13:58:54-14:07:17/49701-66267
 MxACQtime: 33ms; DRate: 190.1KB/s; Flags: 0, 0, 0
 Pulse: 275ns, IFfilt: 5.0MHz; ppPol: HH HV VV
 TxPol: HHVV, PRF: 20 10 20 10 kHz
 Range: Delay 75m, Spacing 15m, Gates 100
 Ave. Pulses: 84, Rng/Prof Aspect@90m/s: 5.7

	Min	Max	Mean	Std	Varc%
hhN(dB)	-67.97	-64.64	-66.21	-76.22	10.0
vvN(dB)	-66.98	-63.54	-65.15	-75.16	10.0
hhL(dB)	-11.70	-5.46	-7.14	-13.31	24.1
vvL(dB)	-8.93	-2.04	-5.70	-10.37	34.1
ppN(m/s)	-12.70	12.51	0.01	4.16	
ppT(m/s)	-100.3	98.86	0.09	32.83	
hh/vv(dB)	-NaN	44.94	-NaN	40.54	-410
vh/hh(dB)	-43.39	-15.79	-22.72	-19.82	194.
hv/vv(dB)	-NaN	-20.80	-49.98	-43.87	408.
hnjmp(dB)	-1.99	2.61	0.17	-8.32	14.1
vnjmp(dB)	-2.25	2.40	0.17	-8.41	13.9



IHOP 2002 (dual-antenna config, modes 1,3,4,7) Data (cal: 49.0,50.0)

W2002-06-25-13-34-49 - PPMAG4
 IRIG:1,UTC: 13:34:34.16 to 15:04:05.92, Dur: 5371s
 TimeLngth: 5371.76s, TimeInt: 29ms (34.0pps)
 TimeCor=-13.0s, DSPDif(mn,min,mx):30,28,374
 PPS(min,max,std): 12,36,3.89
 Prof: 742 to 183151, NumProf(t/r): 182409/16567
 ProcTime/Recs: 13:58:54-14:07:17/49701-66267
 MxACQtime: 33ms; DRate: 190.1KB/s; Flags: 0, 0, 0
 Pulse: 275ns, IFfilt: 5.0MHz; ppPol: HH HV VV
 TxPol: HHVV, PRF: 20 10 20 10 kHz
 Range: Delay 75m, Spacing 15m, Gates 100
 Ave. Pulses: 84, Rng/Prof Aspect@90m/s: 5.7

	Min	Max	Mean	Std	Varc%
hhN(dB)	-67.97	-64.64	-66.21	-76.22	10.0
vvN(dB)	-66.98	-63.54	-65.15	-75.16	10.0
hhL(dB)	-11.70	-5.46	-7.14	-13.31	24.1
vvL(dB)	-8.93	-2.04	-5.70	-10.37	34.1
ppN(m/s)	-12.70	12.51	0.01	4.16	
ppT(m/s)	-100.3	98.86	0.09	32.83	
hh/vv(dB)	-NaN	44.94	-NaN	40.54	-410
vh/hh(dB)	-43.39	-15.79	-22.72	-19.82	194.
hv/vv(dB)	-NaN	-20.80	-49.98	-43.87	408.
hnjmp(dB)	-1.99	2.61	0.17	-8.32	14.1
vnjmp(dB)	-2.25	2.40	0.17	-8.41	13.9