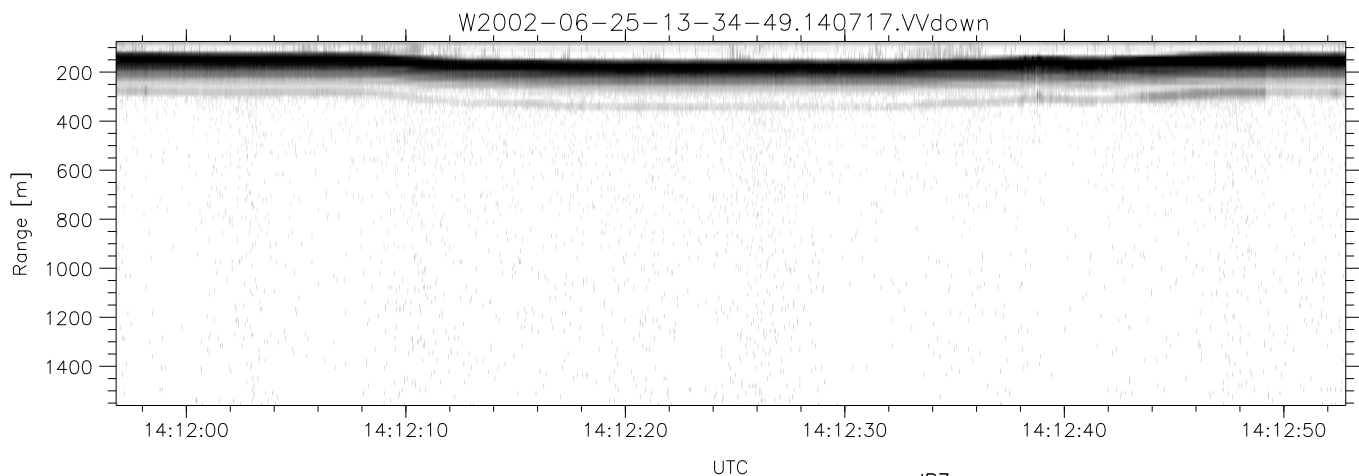
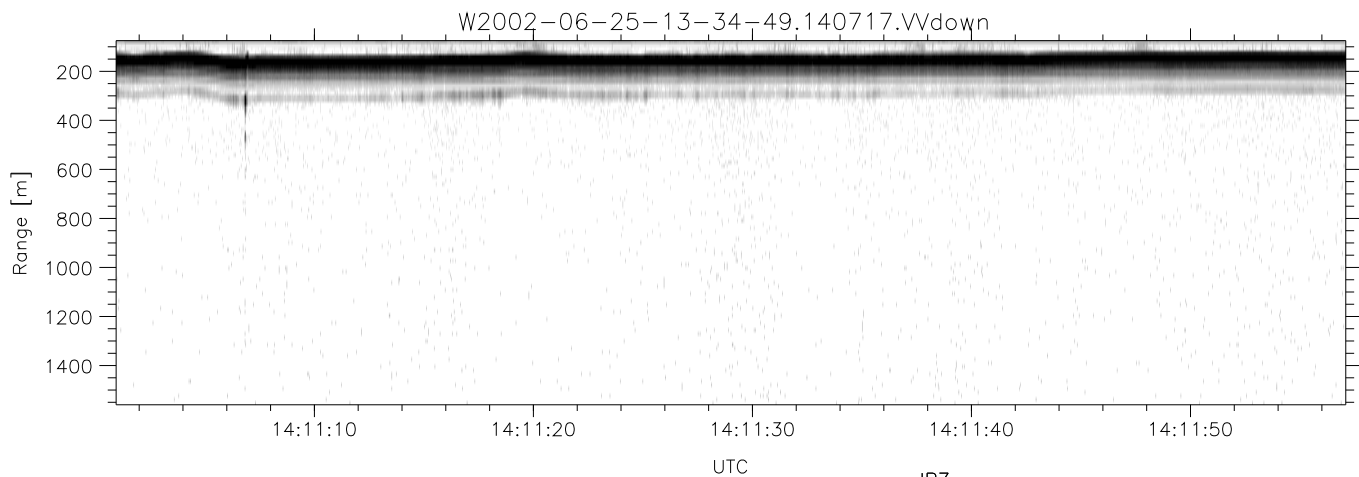
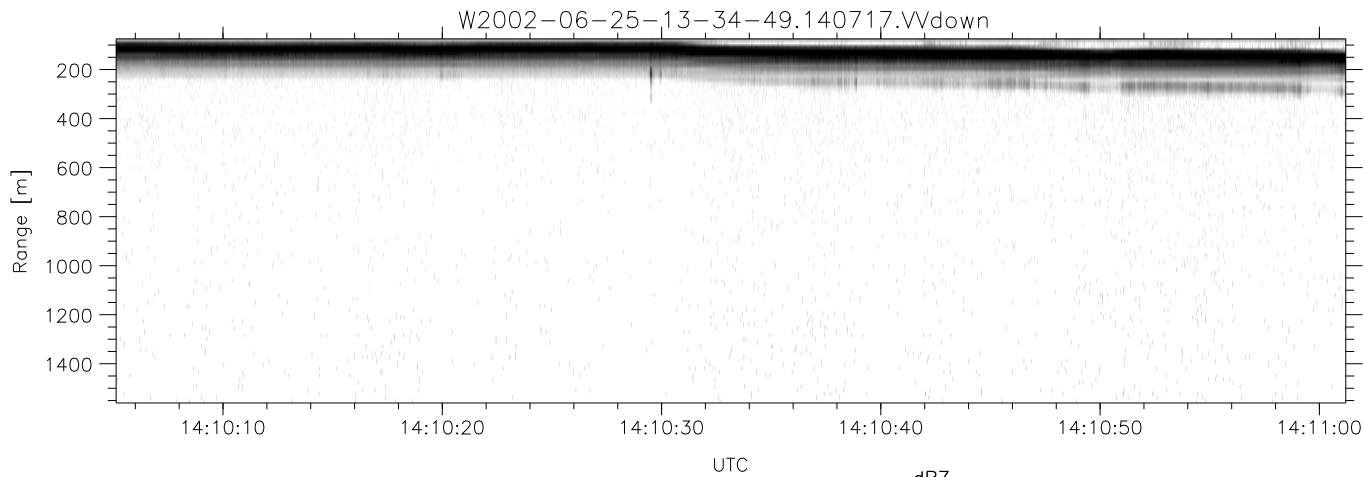


IHOP 2002 (dual-antenna config, modes 1,3,4,7) Data (cal: 49.0,50.0)

W2002-06-25-13-34-49 - PPMAG4
 IRIG:1,UTC: 13:34:34.16 to 15:04:05.92, Dur: 5371s
 TimeLngth: 5371.76s, TimeInt: 29ms (34.0pps)
 TimeCor=-13.0s, DSPDif(mn,min,mx):29,28,377
 PPS(min,max,std): 23,36,2.36
 Prof: 742 to 183151, NumProf(t/r): 182409/16567
 ProcTime/Recs: 14:07:17-14:15:23/66268-82834
 MxACQtime: 33ms; DRate: 190.1KB/s; Flags: 0, 0, 0
 Pulse: 275ns, IFfilt: 5.0MHz; ppPol: HH HV VV
 TxPol: HHVV, PRF: 20 10 20 10 kHz
 Range: Delay 75m, Spacing 15m, Gates 100
 Ave. Pulses: 84, Rng/Prof Aspect@90m/s: 5.7

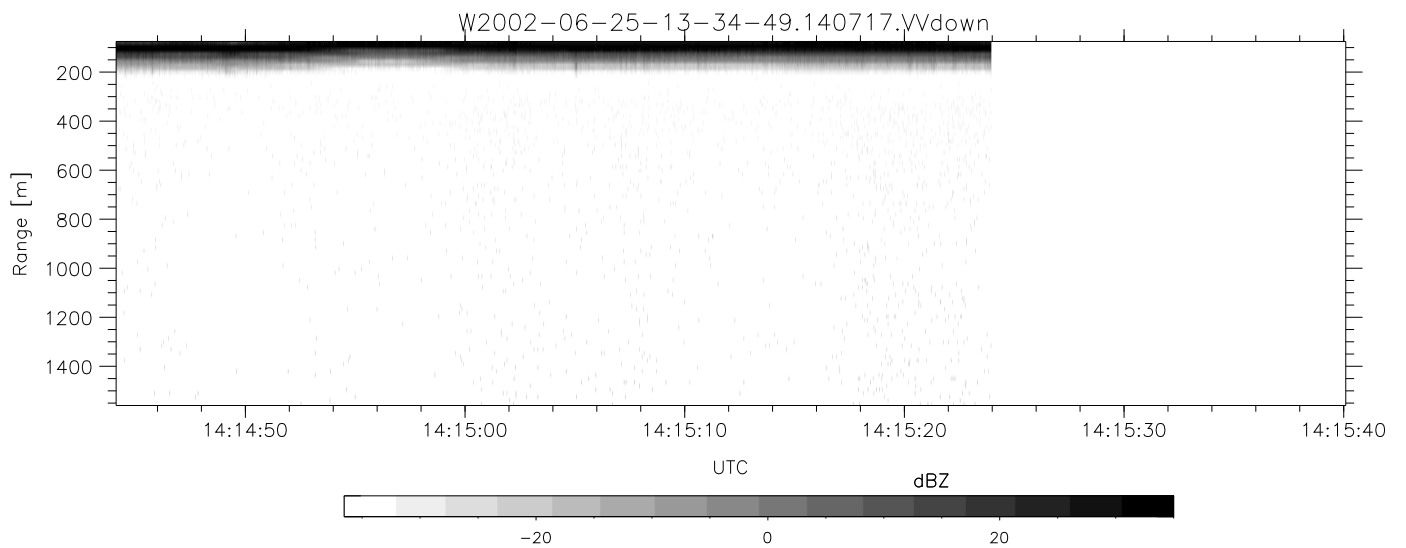
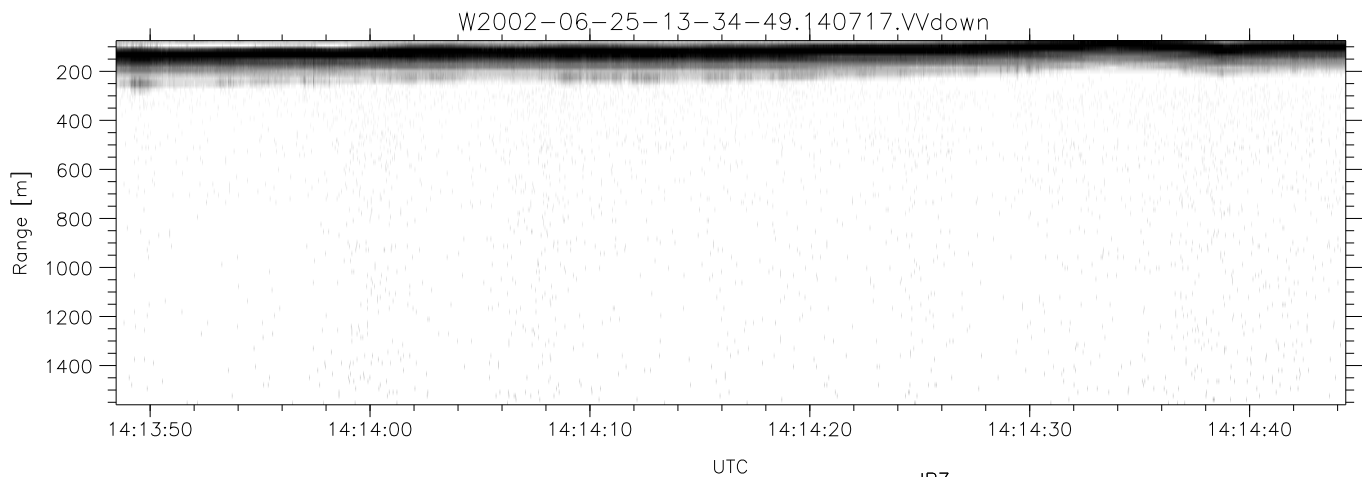
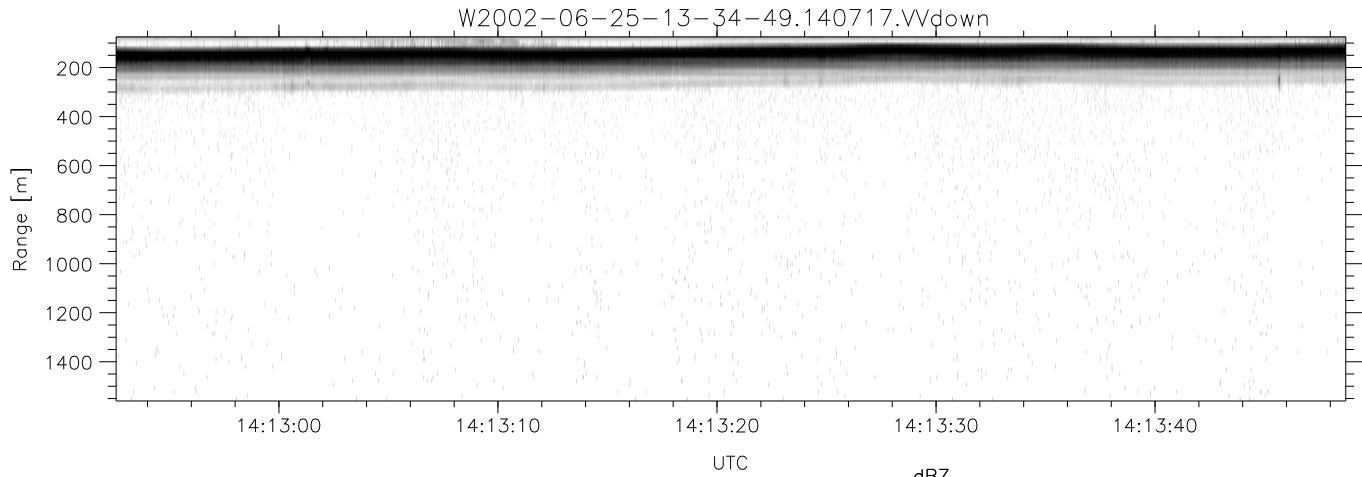
	Min	Max	Mean	Std	Varc%
hhN(dB)	-67.97	-64.83	-66.24	-76.30	9.9
vvN(dB)	-67.10	-63.50	-65.19	-75.16	10.1
hhL(dB)	-13.50	-5.56	-7.38	-13.33	25.4
vvL(dB)	-8.84	-2.34	-6.21	-11.07	32.6
ppN(m/s)	-12.66	12.61	0.02	4.12	
ppT(m/s)	-100.0	99.63	0.18	32.58	
hh/vv(dB)	-NaN	36.89	11.58	22.74	1304
vh/hh(dB)	-99.00	-99.00	-99.00	-99.00	-99.
hv/vv(dB)	-NaN	-24.13	-43.67	-40.96	186.
hnjmp(dB)	-2.36	2.09	-0.08	-8.65	13.9
vnjmp(dB)	-2.88	2.25	-0.09	-8.55	14.3



IHOP 2002 (dual-antenna config, modes 1,3,4,7) Data (cal: 49.0,50.0)

W2002-06-25-13-34-49 - PPMAG4
 IRIG:1,UTC: 13:34:34.16 to 15:04:05.92, Dur: 5371s
 TimeLngth: 5371.76s, TimeInt: 29ms (34.0pps)
 TimeCor=-13.0s, DSPDif(mn,min,mx):29,28,377
 PPS(min,max,std): 23,36,2.36
 Prof: 742 to 183151, NumProf(t/r): 182409/16567
 ProcTime/Recs: 14:07:17-14:15:23/66268-82834
 MxACQtime: 33ms; DRate: 190.1KB/s; Flags: 0, 0, 0
 Pulse: 275ns, IFfilt: 5.0MHz; ppPol: HH HV VV
 TxPol: HHVV, PRF: 20 10 20 10 kHz
 Range: Delay 75m, Spacing 15m, Gates 100
 Ave. Pulses: 84, Rng/Prof Aspect@90m/s: 5.7

	Min	Max	Mean	Std	Varc%
hhN(dB)	-67.97	-64.83	-66.24	-76.30	9.9
vvN(dB)	-67.10	-63.50	-65.19	-75.16	10.1
hhL(dB)	-13.50	-5.56	-7.38	-13.33	25.4
vvL(dB)	-8.84	-2.34	-6.21	-11.07	32.6
ppN(m/s)	-12.66	12.61	0.02	4.12	
ppT(m/s)	-100.0	99.63	0.18	32.58	
hh/vv(dB)	-NaN	36.89	11.58	22.74	1304
vh/hh(dB)	-99.00	-99.00	-99.00	-99.00	-99.
hv/vv(dB)	-NaN	-24.13	-43.67	-40.96	186.
hnjmp(dB)	-2.36	2.09	-0.08	-8.65	13.9
vnjmp(dB)	-2.88	2.25	-0.09	-8.55	14.3



IHOP 2002 (dual-antenna config, modes 1,3,4,7) Data (cal: 49.0,50.0)

W2002-06-25-13-34-49 - PPMAG4
 IRIG:1,UTC: 13:34:34.16 to 15:04:05.92, Dur: 5371s
 TimeLngth: 5371.76s, TimeInt: 29ms (34.0pps)
 TimeCor=-13.0s, DSPDif(mn,min,mx):29,28,377
 PPS(min,max,std): 23,36,2.36
 Prof: 742 to 183151, NumProf(t/r): 182409/16567
 ProcTime/Recs: 14:07:17-14:15:23/66268-82834
 MxACQtime: 33ms; DRate: 190.1KB/s; Flags: 0, 0, 0
 Pulse: 275ns, IFfilt: 5.0MHz; ppPol: HH HV VV
 TxPol: HHVV, PRF: 20 10 20 10 kHz
 Range: Delay 75m, Spacing 15m, Gates 100
 Ave. Pulses: 84, Rng/Prof Aspect@90m/s: 5.7

	Min	Max	Mean	Std	Varc%
hhN(dB)	-67.97	-64.83	-66.24	-76.30	9.9
vvN(dB)	-67.10	-63.50	-65.19	-75.16	10.1
hhL(dB)	-13.50	-5.56	-7.38	-13.33	25.4
vvL(dB)	-8.84	-2.34	-6.21	-11.07	32.6
ppN(m/s)	-12.66	12.61	0.02	4.12	
ppT(m/s)	-100.0	99.63	0.18	32.58	
hh/vv(dB)	-NaN	36.89	11.58	22.74	1304
vh/hh(dB)	-99.00	-99.00	-99.00	-99.00	-99.
hv/vv(dB)	-NaN	-24.13	-43.67	-40.96	186.
hnjmp(dB)	-2.36	2.09	-0.08	-8.65	13.9
vnjmp(dB)	-2.88	2.25	-0.09	-8.55	14.3