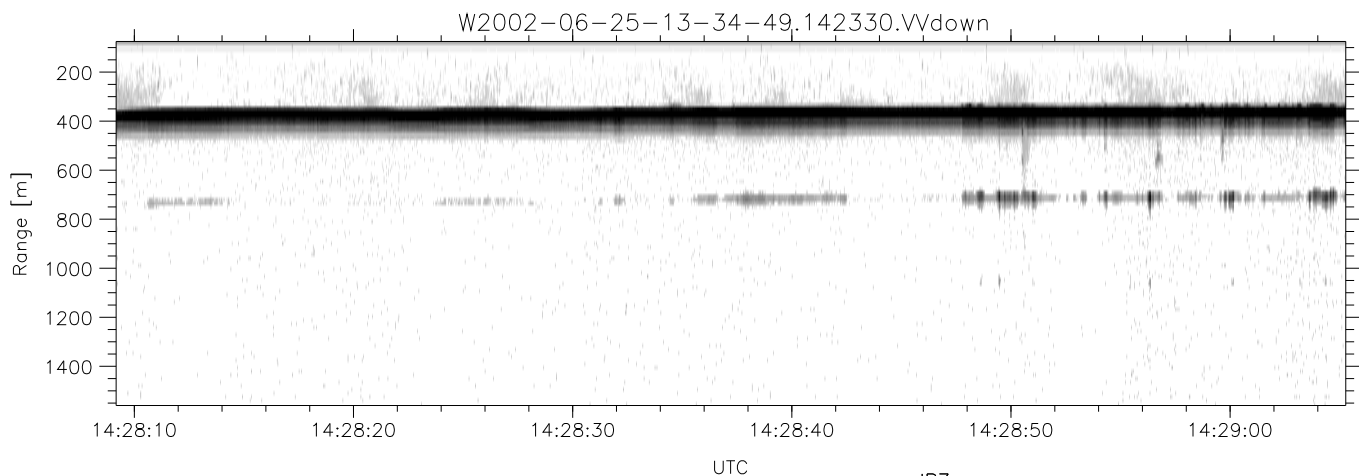
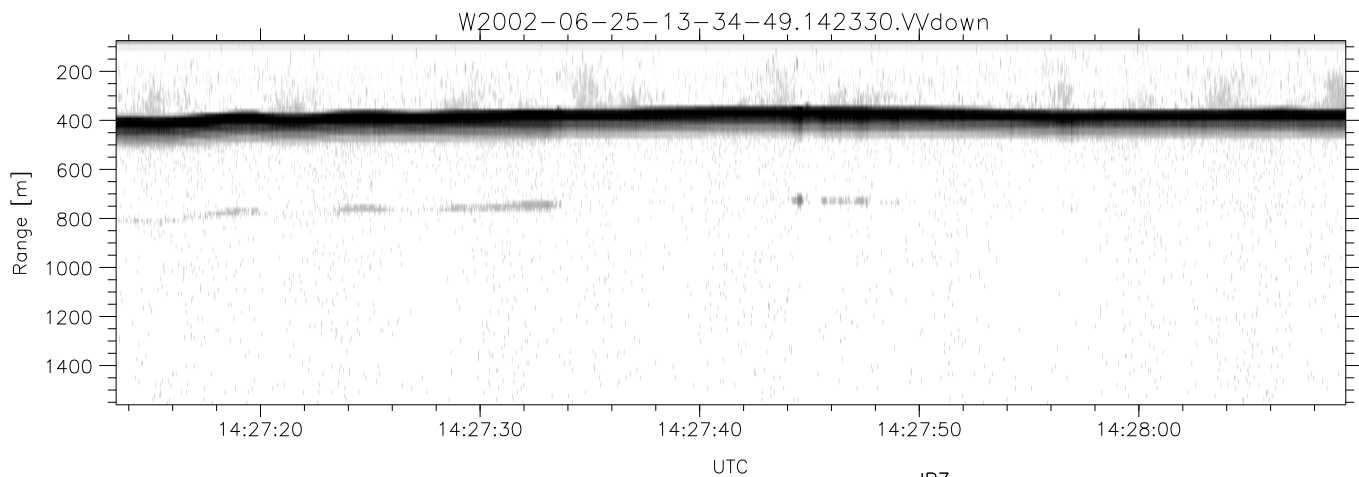
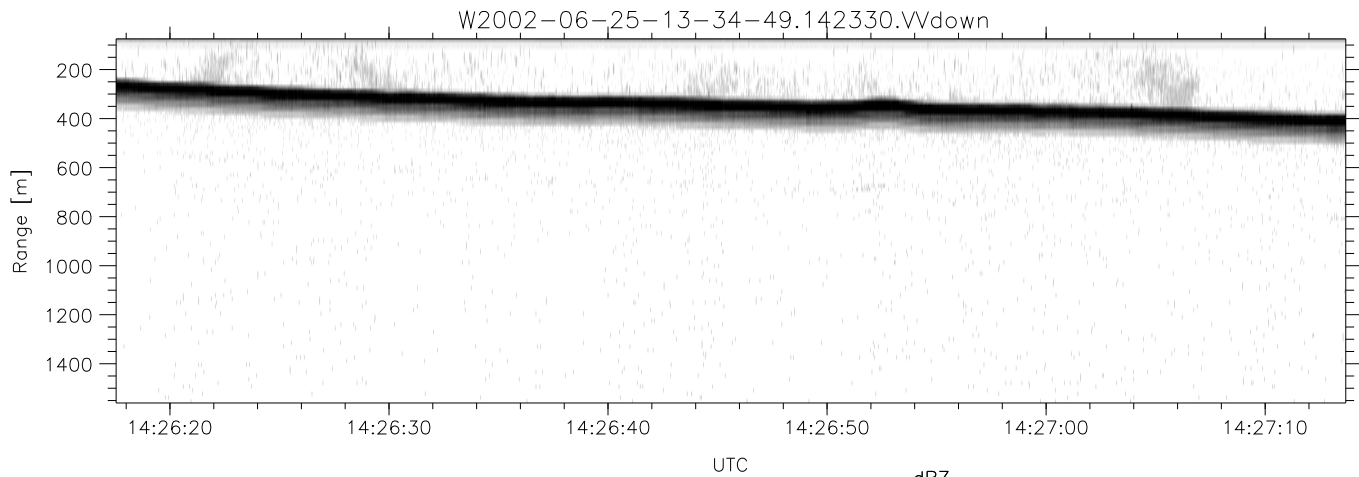


IHOP 2002 (dual-antenna config, modes 1,3,4,7) Data (cal: 49.0,50.0)

W2002-06-25-13-34-49 - PPMAG4
 IRIG:1,UTC: 13:34:34.16 to 15:04:05.92, Dur: 5371s
 TimeLngth: 5371.76s, TimeInt: 29ms (34.0pps)
 TimeCor=-13.0s, DSPDif(mn,min,mx):29,28,360
 PPS(min,max,std): 23,36,2.32
 Prof: 742 to 183151, NumProf(t/r): 182409/16567
 ProcTime/Recs: 14:23:30-14:31:36/99402-115968
 MxACQtime: 33ms; DRate: 190.1KB/s; Flags: 0, 0, 0
 Pulse: 275ns, IFfilt: 5.0MHz; ppPol: HH HV VV
 TxPol: HHVV, PRF: 20 10 20 10 kHz
 Range: Delay 75m, Spacing 15m, Gates 100
 Ave. Pulses: 84, Rng/Prof Aspect@90m/s: 5.7

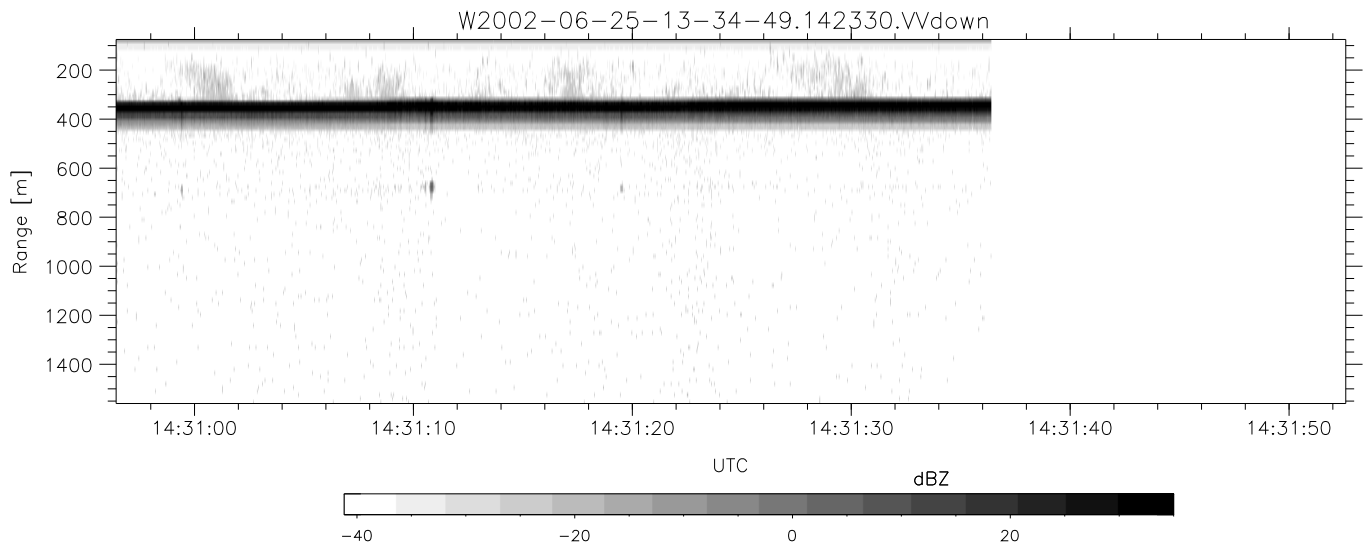
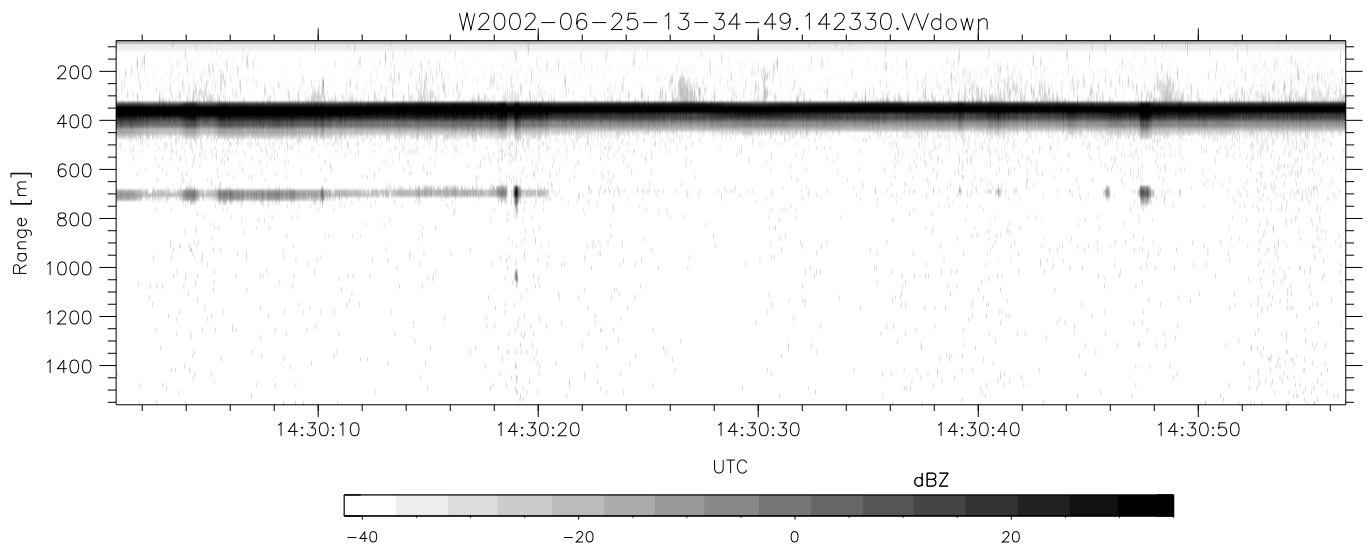
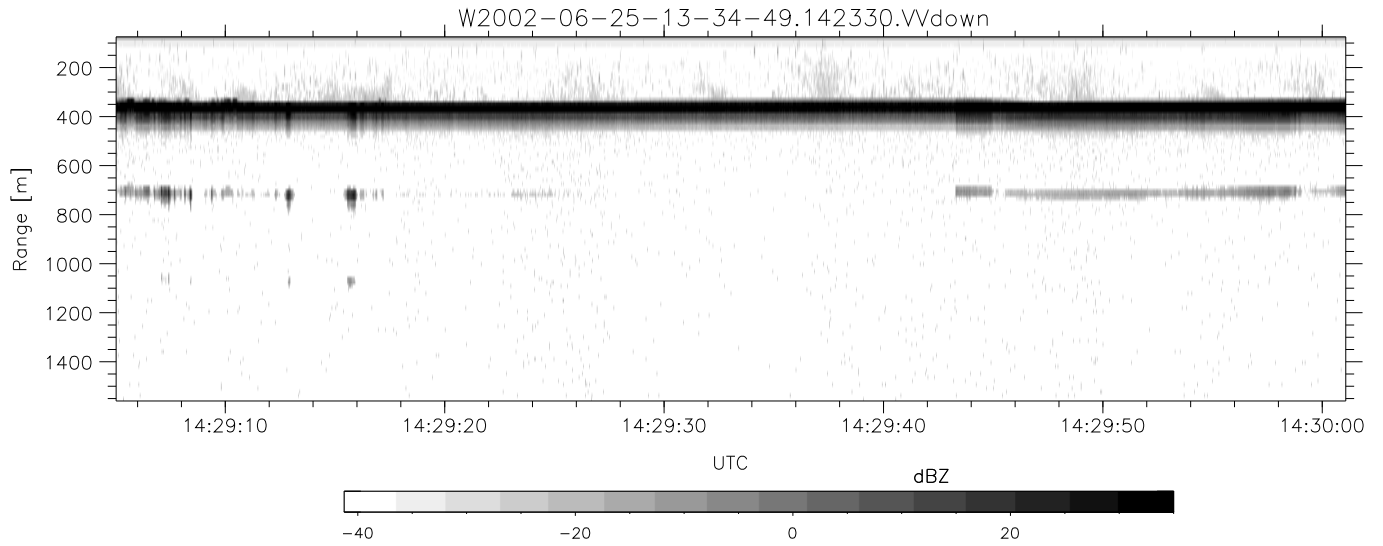
	Min	Max	Mean	Std	Varc%
hhN(dB)	-68.23	-64.68	-66.31	-76.31	10.0
vvN(dB)	-67.03	-63.61	-65.25	-75.24	10.0
hhL(dB)	-14.31	-5.67	-7.05	-15.14	15.5
vvL(dB)	-8.52	-2.07	-4.91	-11.51	21.9
ppN(m/s)	-12.41	12.32	0.01	4.14	
ppT(m/s)	-98.04	97.36	0.06	32.67	
hh/vv(dB)	-NaN	32.88	17.21	25.09	614.
vh/hh(dB)	-99.00	-99.00	-99.00	-99.00	-99.
hv/vv(dB)	-NaN	-24.36	-51.00	-44.62	434.
hnjmp(dB)	-2.97	2.18	-0.08	-8.56	14.2
vnjmp(dB)	-2.28	2.31	-0.08	-8.59	14.1



IHOP 2002 (dual-antenna config, modes 1,3,4,7) Data (cal: 49.0,50.0)

W2002-06-25-13-34-49 - PPMAG4
 IRIG:1,UTC: 13:34:34.16 to 15:04:05.92, Dur: 5371s
 TimeLngth: 5371.76s, TimeInt: 29ms (34.0pps)
 TimeCor=-13.0s, DSPDif(mn,min,mx):29,28,360
 PPS(min,max,std): 23,36,2.32
 Prof: 742 to 183151, NumProf(t/r): 182409/16567
 ProcTime/Recs: 14:23:30-14:31:36/99402-115968
 MxACQtime: 33ms; DRate: 190.1KB/s; Flags: 0, 0, 0
 Pulse: 275ns, IFfilt: 5.0MHz; ppPol: HH HV VV
 TxPol: HHVV, PRF: 20 10 20 10 kHz
 Range: Delay 75m, Spacing 15m, Gates 100
 Ave. Pulses: 84, Rng/Prof Aspect@90m/s: 5.7

	Min	Max	Mean	Std	Varc%
hhN(dB)	-68.23	-64.68	-66.31	-76.31	10.0
vvN(dB)	-67.03	-63.61	-65.25	-75.24	10.0
hhL(dB)	-14.31	-5.67	-7.05	-15.14	15.5
vvL(dB)	-8.52	-2.07	-4.91	-11.51	21.9
ppN(m/s)	-12.41	12.32	0.01	4.14	
ppT(m/s)	-98.04	97.36	0.06	32.67	
hh/vv(dB)	-NaN	32.88	17.21	25.09	614.
vh/hh(dB)	-99.00	-99.00	-99.00	-99.00	-99.
hv/vv(dB)	-NaN	-24.36	-51.00	-44.62	434.
hnjmp(dB)	-2.97	2.18	-0.08	-8.56	14.2
vnjmp(dB)	-2.28	2.31	-0.08	-8.59	14.1



IHOP 2002 (dual-antenna config, modes 1,3,4,7) Data (cal: 49.0,50.0)

W2002-06-25-13-34-49 - PPMAG4
 IRIG:1,UTC: 13:34:34.16 to 15:04:05.92, Dur: 5371s
 TimeLngth: 5371.76s, TimeInt: 29ms (34.0pps)
 TimeCor=-13.0s, DSPDif(mn,min,mx):29,28,360
 PPS(min,max,std): 23,36,2.32
 Prof: 742 to 183151, NumProf(t/r): 182409/16567
 ProcTime/Recs: 14:23:30-14:31:36/99402-115968
 MxACQtime: 33ms; DRate: 190.1KB/s; Flags: 0, 0, 0
 Pulse: 275ns, IFfilt: 5.0MHz; ppPol: HH HV VV
 TxPol: HHVV, PRF: 20 10 20 10 kHz
 Range: Delay 75m, Spacing 15m, Gates 100
 Ave. Pulses: 84, Rng/Prof Aspect@90m/s: 5.7

	Min	Max	Mean	Std	Varc%
hhN(dB)	-68.23	-64.68	-66.31	-76.31	10.0
vvN(dB)	-67.03	-63.61	-65.25	-75.24	10.0
hhL(dB)	-14.31	-5.67	-7.05	-15.14	15.5
vvL(dB)	-8.52	-2.07	-4.91	-11.51	21.9
ppN(m/s)	-12.41	12.32	0.01	4.14	
ppT(m/s)	-98.04	97.36	0.06	32.67	
hh/vv(dB)	-NaN	32.88	17.21	25.09	614.
vh/hh(dB)	-99.00	-99.00	-99.00	-99.00	-99.
hv/vv(dB)	-NaN	-24.36	-51.00	-44.62	434.
hnjmp(dB)	-2.97	2.18	-0.08	-8.56	14.2
vnjmp(dB)	-2.28	2.31	-0.08	-8.59	14.1