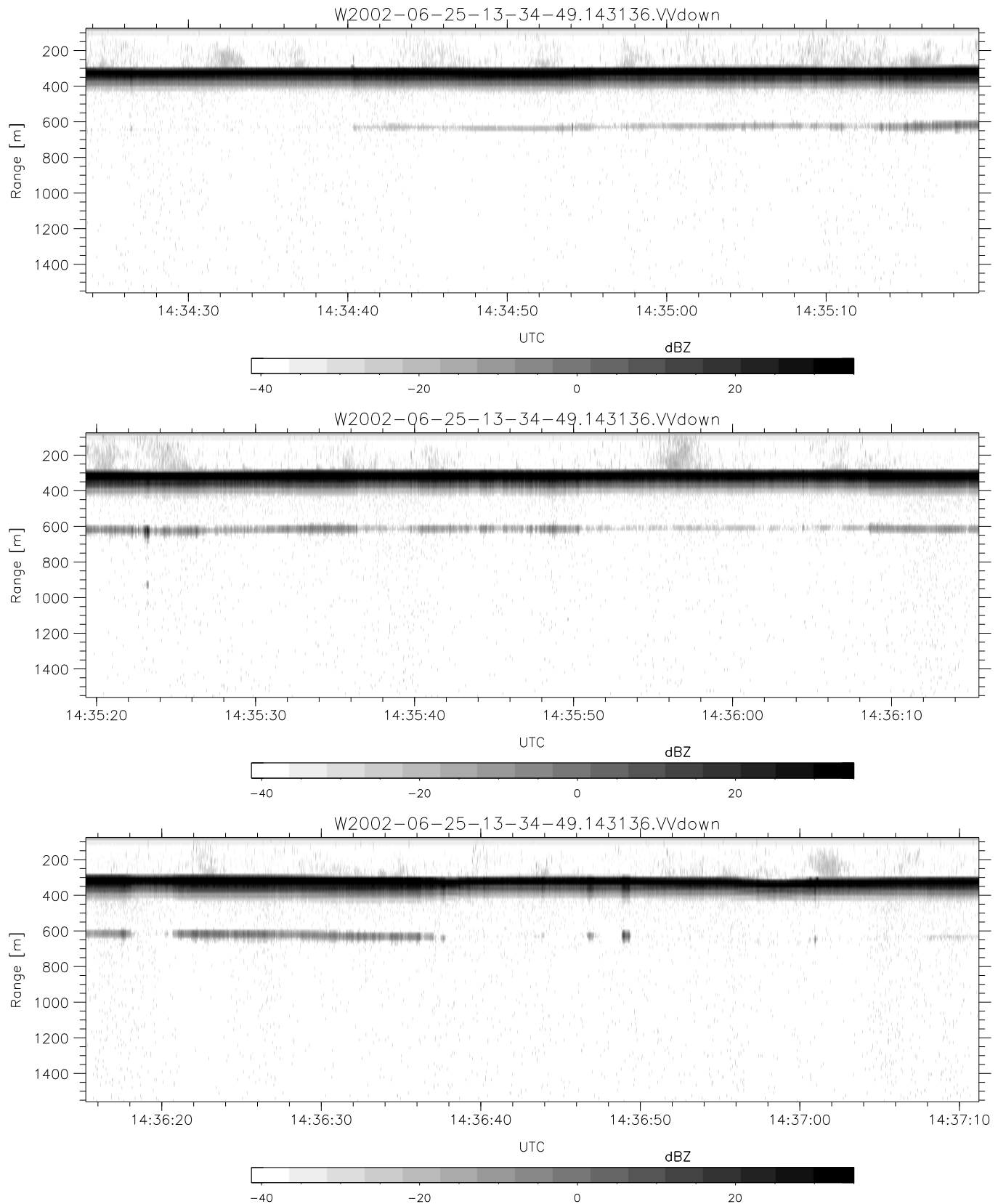


IHOP 2002 (dual-antenna config, modes 1,3,4,7) Data (cal: 49.0,50.0)

W2002-06-25-13-34-49 - PPMAG4
 IRIG:1,UTC: 13:34:34.16 to 15:04:05.92, Dur: 5371s
 TimeLngth: 5371.76s, TimeInt: 29ms (34.0pps)
 TimeCor=-13.0s, DSPDif(mn,min,mx):29,28,349
 PPS(min,max,std): 23,36,2.29
 Prof: 742 to 183151, NumProf(t/r): 182409/16567
 ProcTime/Recs: 14:31:36-14:39:42/115969-132535
 MxACQtime: 33ms; DRate: 190.1KB/s; Flags: 0, 0, 0
 Pulse: 275ns, IFilt: 5.0MHz; ppPol: HH HV VV
 TxPol: HHVV, PRF: 20 10 20 10 kHz
 Range: Delay 75m, Spacing 15m, Gates 100
 Ave. Pulses: 84, Rng/Prof Aspect@90m/s: 5.7

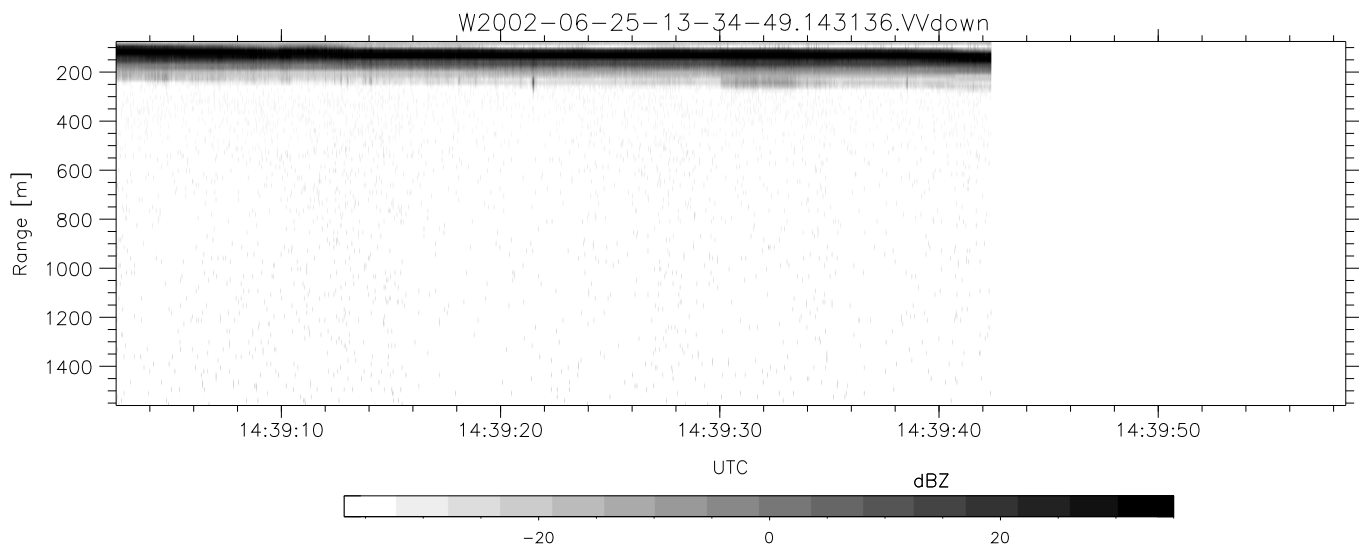
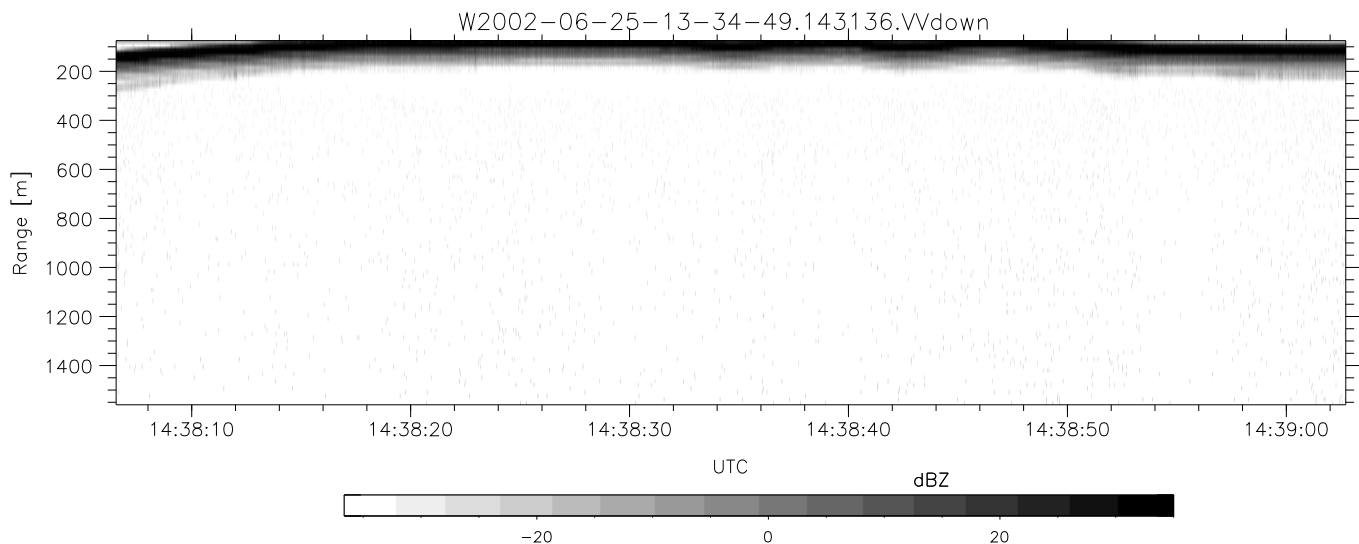
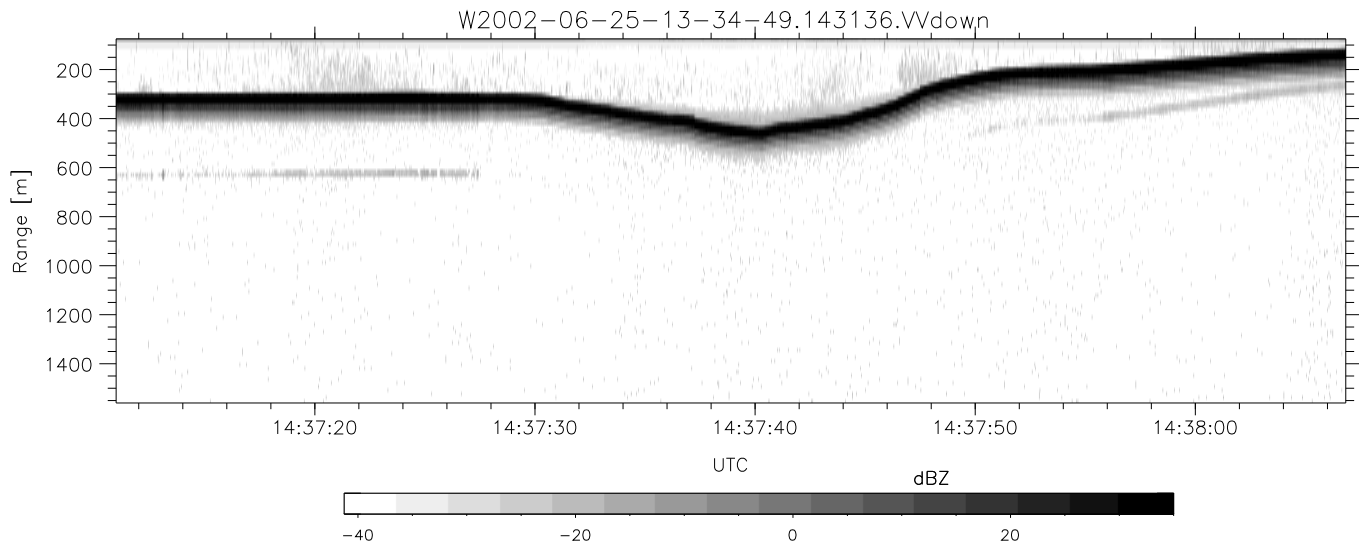
	Min	Max	Mean	Std	Varc%
hhN(dB)	-68.31	-64.59	-66.34	-76.37	9.9
vvN(dB)	-67.31	-63.76	-65.26	-75.27	10.0
hhL(dB)	-12.68	-3.99	-6.95	-15.76	13.1
vvL(dB)	-7.98	-1.84	-4.69	-12.20	17.7
ppN(m/s)	-11.78	12.77	0.02	4.16	
ppT(m/s)	-93.04	100.87	0.14	32.88	
hh/vv(dB)	-NaN	41.24	-NaN	48.10	-262
vh/hh(dB)	-99.00	-99.00	-99.00	-99.00	-99.
hv/vv(dB)	-NaN	-26.34	-47.97	-42.61	343.
hnjmp(dB)	-2.52	2.60	0.17	-8.38	14.0
vnjmp(dB)	-2.34	2.88	0.17	-8.35	14.1



IHOP 2002 (dual-antenna config, modes 1,3,4,7) Data (cal: 49.0,50.0)

W2002-06-25-13-34-49 - PPMAG4
 IRIG:1,UTC: 13:34:34.16 to 15:04:05.92, Dur: 5371s
 TimeLngth: 5371.76s, TimeInt: 29ms (34.0pps)
 TimeCor=-13.0s, DSPDif(mn,min,mx):29,28,349
 PPS(min,max,std): 23,36,2.29
 Prof: 742 to 183151, NumProf(t/r): 182409/16567
 ProcTime/Recs: 14:31:36-14:39:42/115969-132535
 MxACQtime: 33ms; DRate: 190.1KB/s; Flags: 0, 0, 0
 Pulse: 275ns, IFfilt: 5.0MHz; ppPol: HH HV VV
 TxPol: HHVV, PRF: 20 10 20 10 kHz
 Range: Delay 75m, Spacing 15m, Gates 100
 Ave. Pulses: 84, Rng/Prof Aspect@90m/s: 5.7

	Min	Max	Mean	Std	Varc%
hhN(dB)	-68.31	-64.59	-66.34	-76.37	9.9
vvN(dB)	-67.31	-63.76	-65.26	-75.27	10.0
hhL(dB)	-12.68	-3.99	-6.95	-15.76	13.1
vvL(dB)	-7.98	-1.84	-4.69	-12.20	17.7
ppN(m/s)	-11.78	12.77	0.02	4.16	
ppT(m/s)	-93.04	100.87	0.14	32.88	
hh/vv(dB)	-NaN	41.24	-NaN	48.10	-262
vh/hh(dB)	-99.00	-99.00	-99.00	-99.00	-99.
hv/vv(dB)	-NaN	-26.34	-47.97	-42.61	343.
hnjmp(dB)	-2.52	2.60	0.17	-8.38	14.0
vnjmp(dB)	-2.34	2.88	0.17	-8.35	14.1



IHOP 2002 (dual-antenna config, modes 1,3,4,7) Data (cal: 49.0,50.0)

W2002-06-25-13-34-49 - PPMAG4	Min	Max	Mean	Std	Varc%	
IRIG:1,UTC: 13:34:34.16 to 15:04:05.92, Dur: 5371s	hhN (dB)	-68.31	-64.59	-66.34	-76.37	9.9
TimeLngth: 5371.76s, TimeInt: 29ms (34.0pps)	vvN (dB)	-67.31	-63.76	-65.26	-75.27	10.0
TimeCor=-13.0s, DSPDif(mn,min,mx):29,28,349	hhL (dB)	-12.68	-3.99	-6.95	-15.76	13.1
PPS(min,max,std): 23,36,2.29	vvL (dB)	-7.98	-1.84	-4.69	-12.20	17.7
Prof: 742 to 183151, NumProf(t/r): 182409/16567	ppN(m/s)	-11.78	12.77	0.02	4.16	
ProcTime/Recs: 14:31:36-14:39:42/115969-132535	ppT(m/s)	-93.04	100.87	0.14	32.88	
MxACQtime: 33ms; DRate: 190.1KB/s; Flags: 0, 0, 0	hh/vv (dB)	-NaN	41.24	-NaN	48.10	-262
Pulse: 275ns, IFilt: 5.0MHz; ppPol: HH HV VV	vh/hh (dB)	-99.00	-99.00	-99.00	-99.00	-99.
TxPol: HHVV, PRF: 20 10 20 10 kHz	hv/vv (dB)	-NaN	-26.34	-47.97	-42.61	343.
Range: Delay 75m, Spacing 15m, Gates 100	hnjmp (dB)	-2.52	2.60	0.17	-8.38	14.0
Ave. Pulses: 84, Rng/Prof Aspect@90m/s: 5.7	vnjmp (dB)	-2.34	2.88	0.17	-8.35	14.1