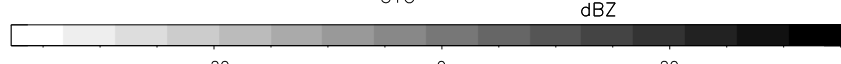
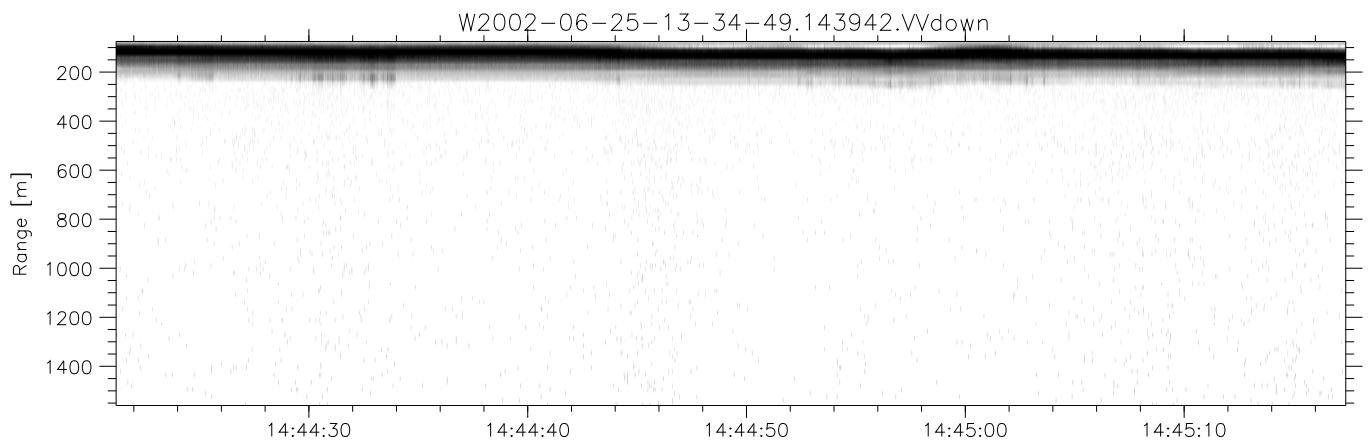
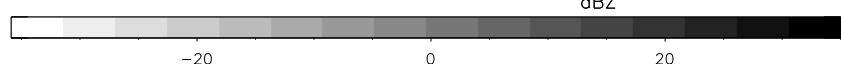
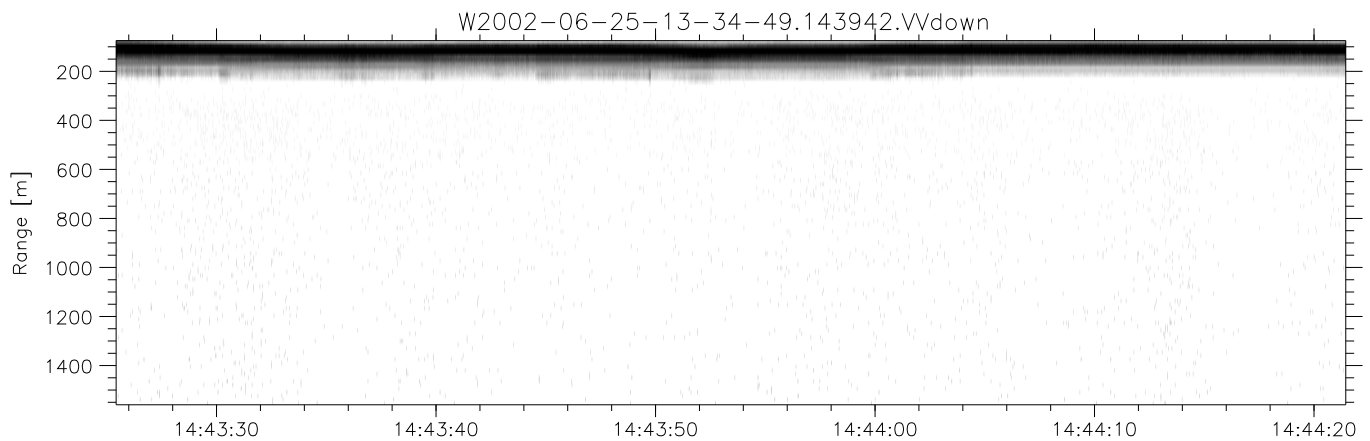
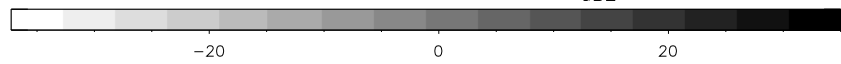
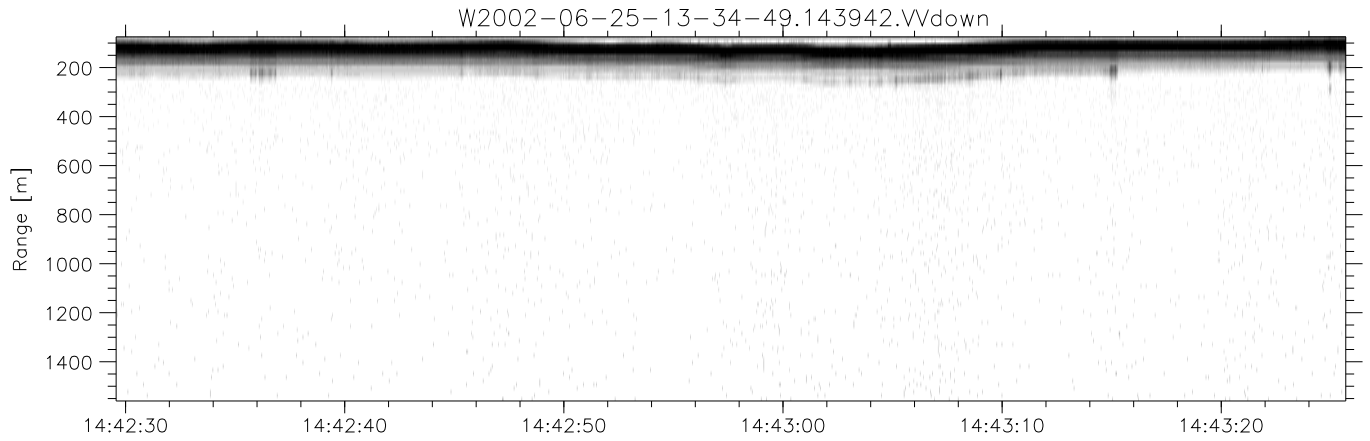


IHOP 2002 (dual-antenna config, modes 1,3,4,7) Data (cal: 49.0,50.0)

W2002-06-25-13-34-49 - PPMAG4
 IRIG:1,UTC: 13:34:34.16 to 15:04:05.92, Dur: 5371s
 TimeLngth: 5371.76s, TimeInt: 29ms (34.0pps)
 TimeCor=-13.0s, DSPDif(mn,min,mx):29,28,378
 PPS(min,max,std): 24,36,2.29
 Prof: 742 to 183151, NumProf(t/r): 182409/16567
 ProcTime/Recs: 14:39:42-14:47:48/132536-149102
 MxACQtime: 33ms; DRate: 190.1KB/s; Flags: 0, 0, 0
 Pulse: 275ns, IFilt: 5.0MHz; ppPol: HH HV VV
 TxPol: HHVV, PRF: 20 10 20 10 kHz
 Range: Delay 75m, Spacing 15m, Gates 100
 Ave. Pulses: 84, Rng/Prof Aspect@90m/s: 5.7

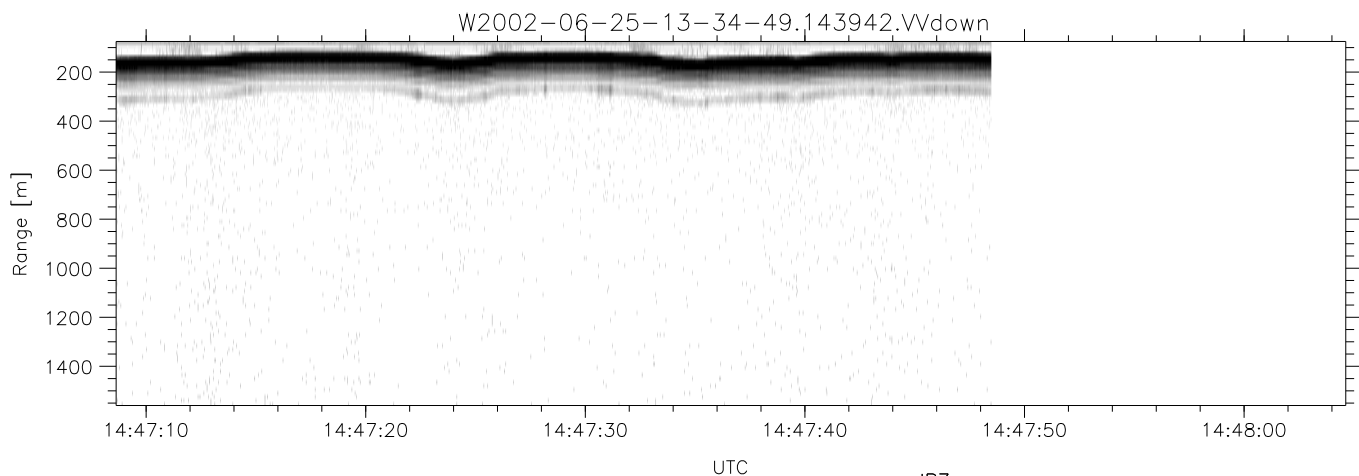
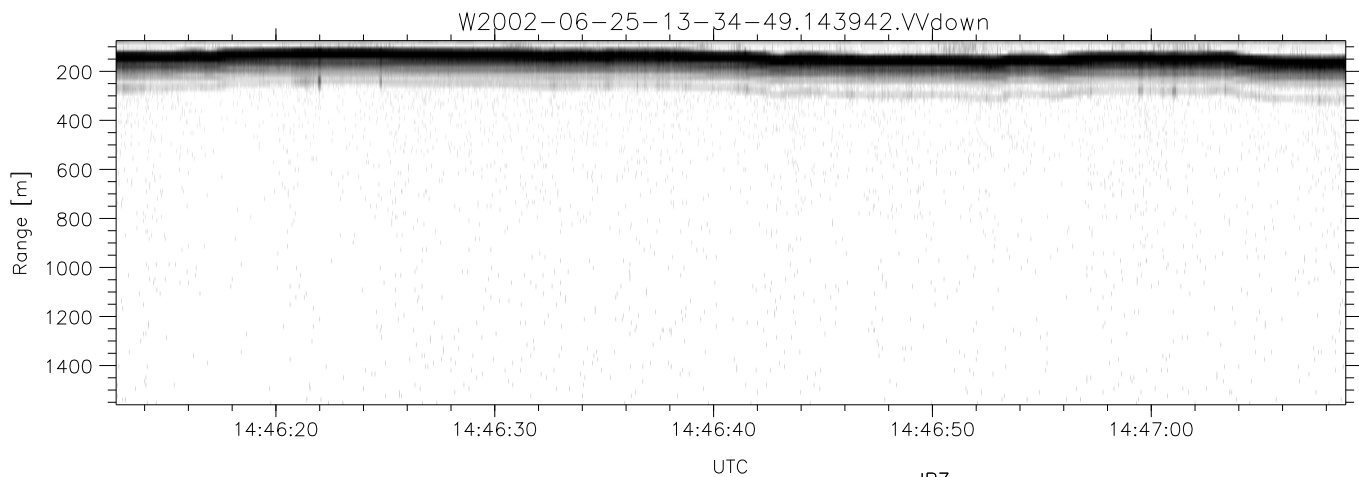
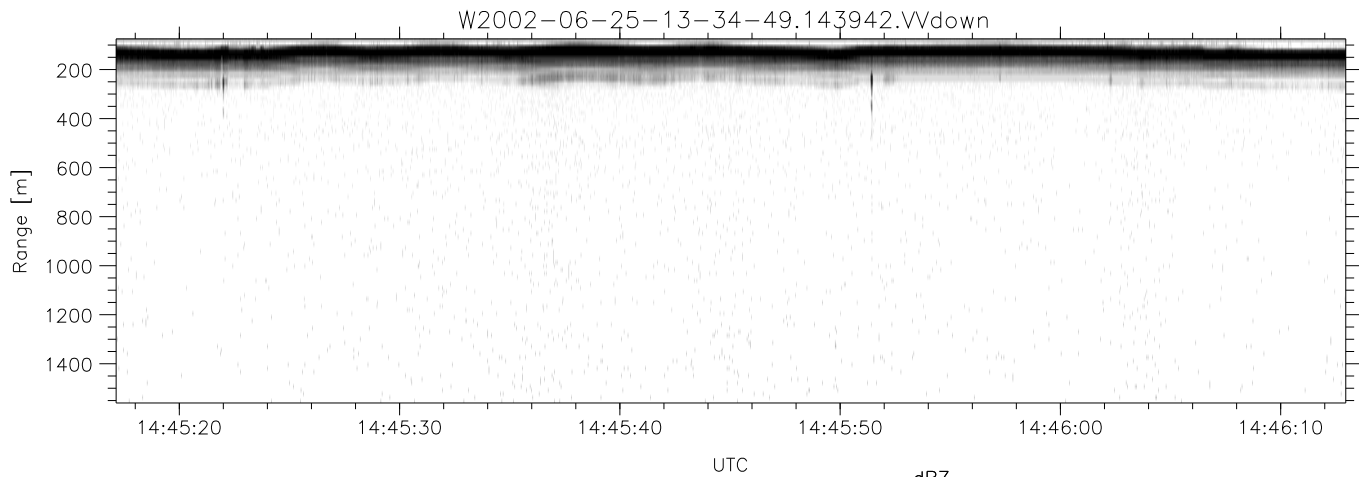
	Min	Max	Mean	Std	Varc%
hhN(dB)	-68.18	-64.82	-66.34	-76.35	10.0
vvN(dB)	-67.13	-63.37	-65.31	-75.31	10.0
hhL(dB)	-12.55	-6.11	-7.83	-14.47	21.7
vvL(dB)	-8.88	-2.37	-6.01	-11.06	31.3
ppN(m/s)	-12.69	12.61	-0.02	4.18	
ppT(m/s)	-100.2	99.58	-0.19	33.03	
hh/vv(dB)	-NaN	28.07	3.94	18.29	2723
vh/hh(dB)	-26.24	-3.61	-9.37	-7.41	157.
hv/vv(dB)	-NaN	-17.88	-46.89	-41.42	352.
hnjmp(dB)	-2.61	1.94	-0.09	-8.63	14.0
vnjmp(dB)	-2.22	2.31	-0.09	-8.60	14.1



IHOP 2002 (dual-antenna config, modes 1,3,4,7) Data (cal: 49.0,50.0)

W2002-06-25-13-34-49 - PPMAG4
 IRIG:1,UTC: 13:34:34.16 to 15:04:05.92, Dur: 5371s
 TimeLngth: 5371.76s, TimeInt: 29ms (34.0pps)
 TimeCor=-13.0s, DSPDif(mn,min,mx):29,28,378
 PPS(min,max,std): 24,36,2.29
 Prof: 742 to 183151, NumProf(t/r): 182409/16567
 ProcTime/Recs: 14:39:42-14:47:48/132536-149102
 MxACQtime: 33ms; DRate: 190.1KB/s; Flags: 0, 0, 0
 Pulse: 275ns, IFfilt: 5.0MHz; ppPol: HH HV VV
 TxPol: HHVV, PRF: 20 10 20 10 kHz
 Range: Delay 75m, Spacing 15m, Gates 100
 Ave. Pulses: 84, Rng/Prof Aspect@90m/s: 5.7

	Min	Max	Mean	Std	Varc%
hhN(dB)	-68.18	-64.82	-66.34	-76.35	10.0
vvN(dB)	-67.13	-63.37	-65.31	-75.31	10.0
hhL(dB)	-12.55	-6.11	-7.83	-14.47	21.7
vvL(dB)	-8.88	-2.37	-6.01	-11.06	31.3
ppN(m/s)	-12.69	12.61	-0.02	4.18	
ppT(m/s)	-100.2	99.58	-0.19	33.03	
hh/vv(dB)	-NaN	28.07	3.94	18.29	2723
vh/hh(dB)	-26.24	-3.61	-9.37	-7.41	157.
hv/vv(dB)	-NaN	-17.88	-46.89	-41.42	352.
hnjmp(dB)	-2.61	1.94	-0.09	-8.63	14.0
vnjmp(dB)	-2.22	2.31	-0.09	-8.60	14.1



IHOP 2002 (dual-antenna config, modes 1,3,4,7) Data (cal: 49.0,50.0)

W2002-06-25-13-34-49 - PPMAG4
 IRIG:1,UTC: 13:34:34.16 to 15:04:05.92, Dur: 5371s
 TimeLngth: 5371.76s, TimeInt: 29ms (34.0pps)
 TimeCor=-13.0s, DSPDif(mn,min,mx):29,28,378
 PPS(min,max,std): 24,36,2.29
 Prof: 742 to 183151, NumProf(t/r): 182409/16567
 ProcTime/Recs: 14:39:42-14:47:48/132536-149102
 MxACQtime: 33ms; DRate: 190.1KB/s; Flags: 0, 0, 0
 Pulse: 275ns, IFfilt: 5.0MHz; ppPol: HH HV VV
 TxPol: HHVV, PRF: 20 10 20 10 kHz
 Range: Delay 75m, Spacing 15m, Gates 100
 Ave. Pulses: 84, Rng/Prof Aspect@90m/s: 5.7

	Min	Max	Mean	Std	Varc%
hhN(dB)	-68.18	-64.82	-66.34	-76.35	10.0
vvN(dB)	-67.13	-63.37	-65.31	-75.31	10.0
hhL(dB)	-12.55	-6.11	-7.83	-14.47	21.7
vvL(dB)	-8.88	-2.37	-6.01	-11.06	31.3
ppN(m/s)	-12.69	12.61	-0.02	4.18	
ppT(m/s)	-100.2	99.58	-0.19	33.03	
hh/vv(dB)	-NaN	28.07	3.94	18.29	2723
vh/hh(dB)	-26.24	-3.61	-9.37	-7.41	157.
hv/vv(dB)	-NaN	-17.88	-46.89	-41.42	352.
hnjmp(dB)	-2.61	1.94	-0.09	-8.63	14.0
vnjmp(dB)	-2.22	2.31	-0.09	-8.60	14.1