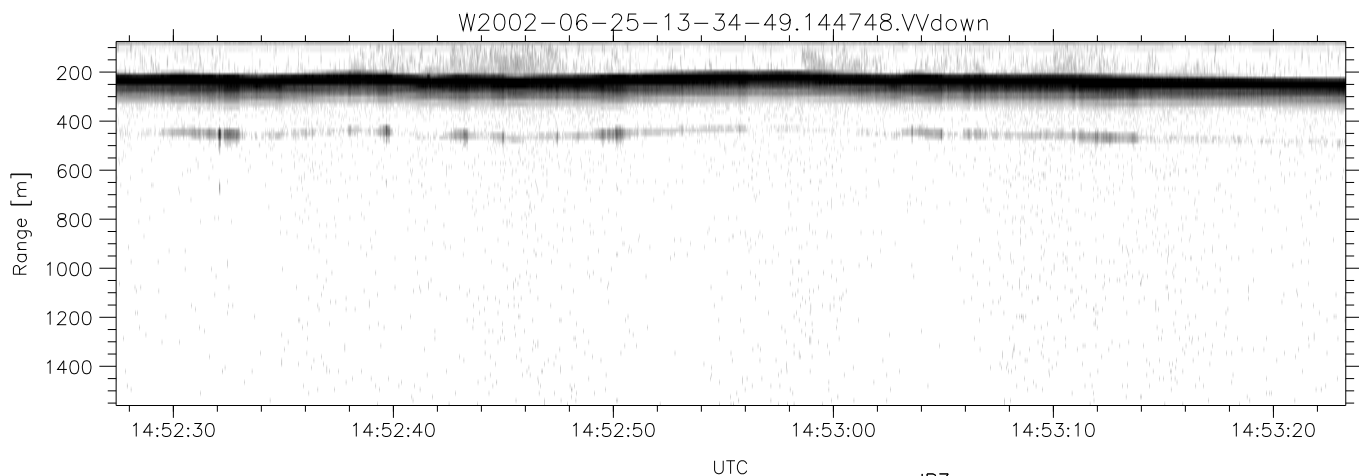
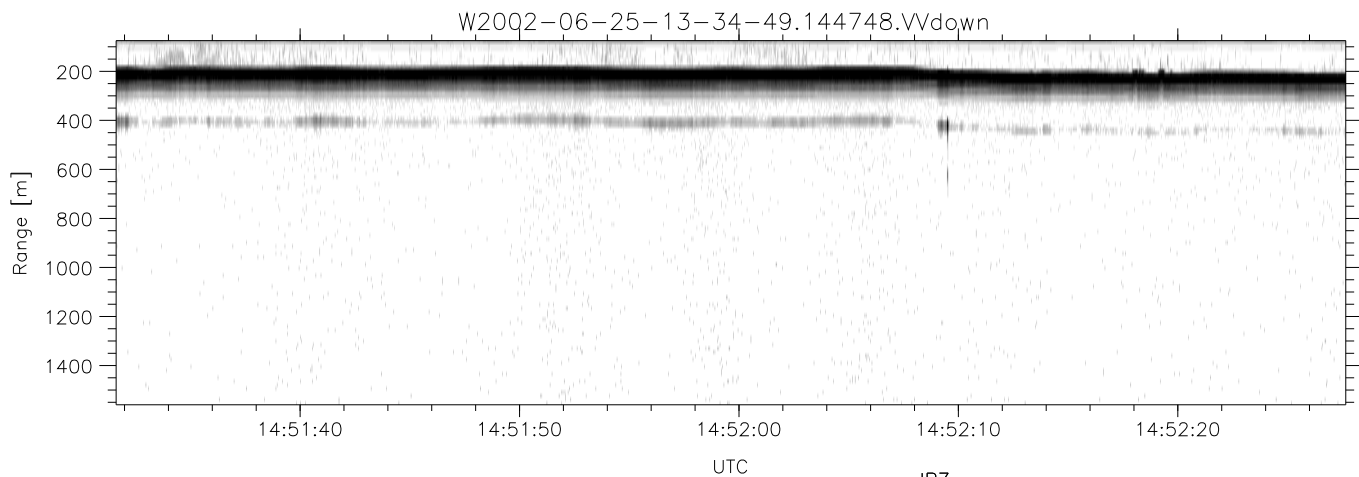
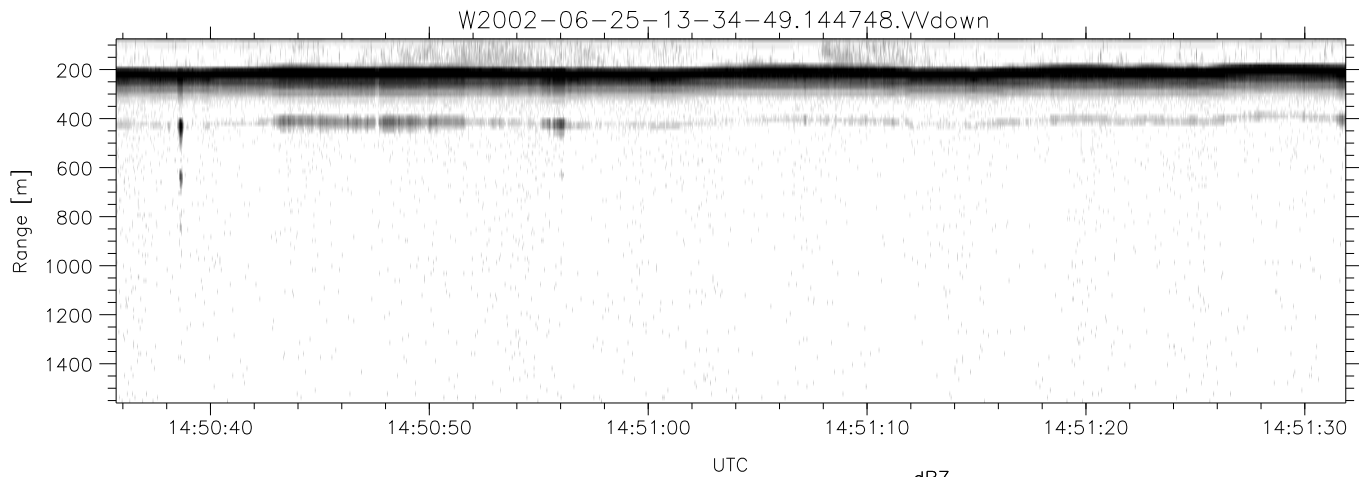


IHOP 2002 (dual-antenna config, modes 1,3,4,7) Data (cal: 49.0,50.0)

W2002-06-25-13-34-49 - PPMAG4

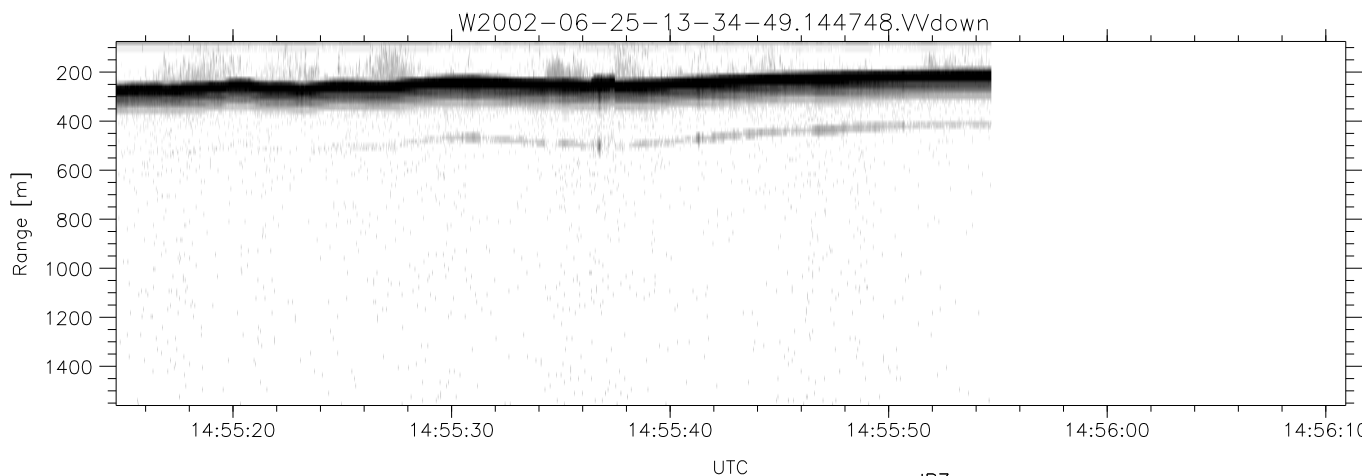
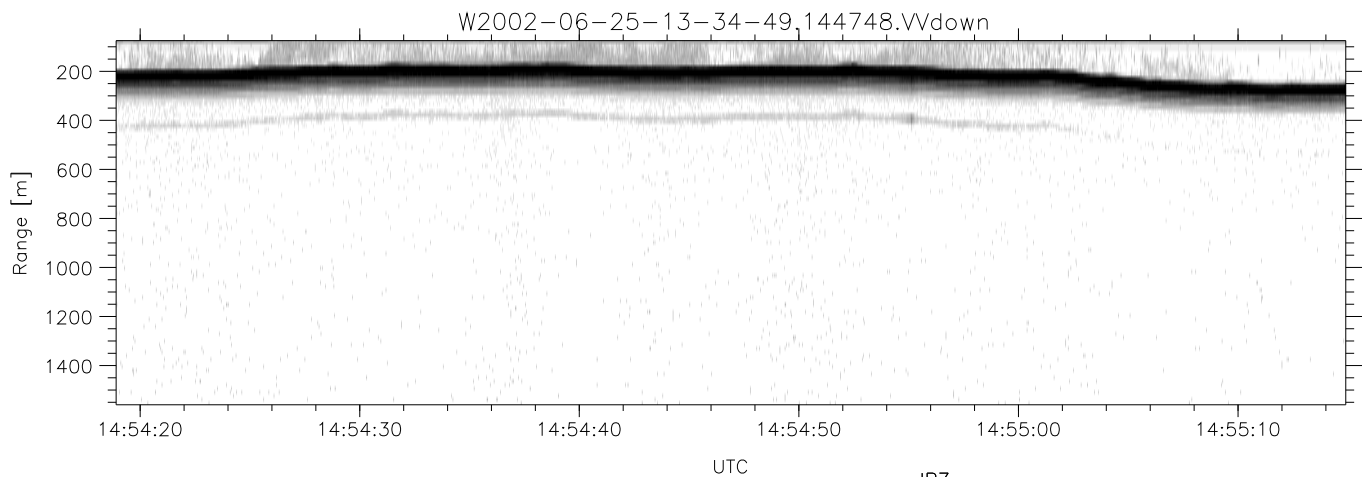
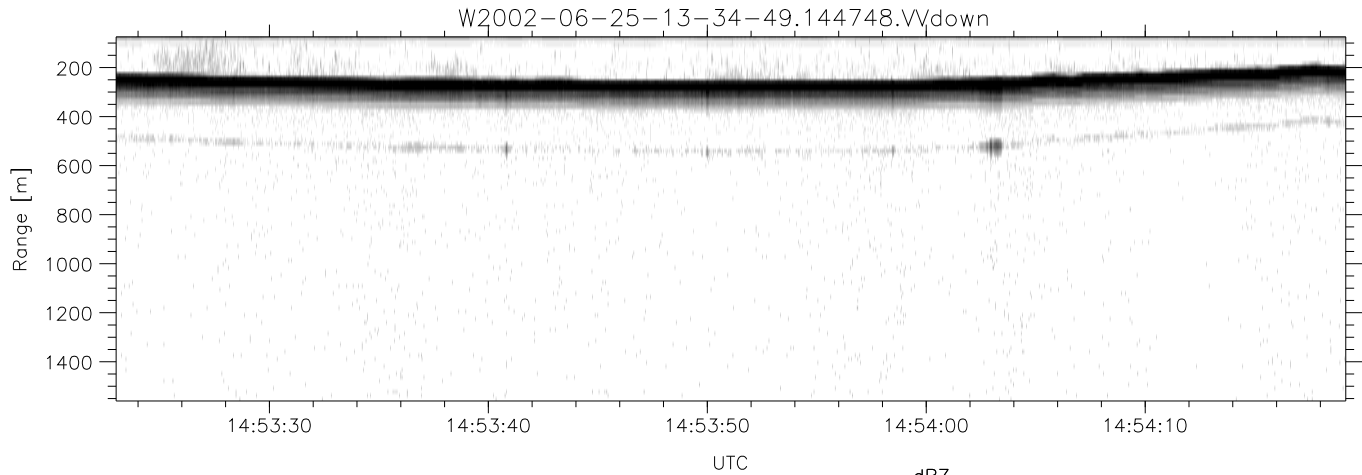
	Min	Max	Mean	Std	Varc%	
IRIG:1,UTC: 13:34:34.16 to 15:04:05.92, Dur: 5371s	hhN (dB)	-68.36	-64.57	-66.39	-76.42	9.9
TimeLngth: 5371.76s, TimeInt: 29ms (34.0pps)	vvN (dB)	-67.03	-63.75	-65.32	-75.27	10.1
TimeCor=-13.0s, DSPDif(mn,min,mx):29,28,320	hhL (dB)	-17.74	-6.07	-7.61	-14.37	21.1
PPS(min,max,std): 23,36,2.34	vvL (dB)	-10.32	-2.75	-5.92	-11.14	30.1
Prof: 742 to 183151, NumProf(t/r): 182409/16567	ppN (m/s)	-12.29	12.64	0.01	4.16	
ProcTime/Recs: 14:47:48-14:55:54/149103-165669	ppT (m/s)	-97.13	99.88	0.04	32.87	
MxACQtime: 33ms; DRate: 190.1KB/s; Flags: 0, 0, 0	hh/vv (dB)	-NaN	33.62	14.32	21.76	554.
Pulse: 275ns, IFfilt: 5.0MHz; ppPol: HH HV VV	vh/hh (dB)	-99.00	-99.00	-99.00	-99.00	-99.
TxPol: HHVV, PRF: 20 10 20 10 kHz	hv/vv (dB)	-NaN	-34.03	-52.19	-46.73	351.
Range: Delay 75m, Spacing 15m, Gates 100	hn/jmp (dB)	-2.55	2.23	0.16	-8.41	13.9
Ave. Pulses: 84, Rng/Prof Aspect@90m/s: 5.7	vn/jmp (dB)	-2.07	2.24	0.17	-8.32	14.2



IHOP 2002 (dual-antenna config, modes 1,3,4,7) Data (cal: 49.0,50.0)

W2002-06-25-13-34-49 - PPMAG4
 IRIG:1,UTC: 13:34:34.16 to 15:04:05.92, Dur: 5371s
 TimeLngth: 5371.76s, TimeInt: 29ms (34.0pps)
 TimeCor=-13.0s, DSPDif(mn,min,mx):29,28,320
 PPS(min,max,std): 23,36,2.34
 Prof: 742 to 183151, NumProf(t/r): 182409/16567
 ProcTime/Recs: 14:47:48-14:55:54/149103-165669
 MxACQtime: 33ms; DRate: 190.1KB/s; Flags: 0, 0, 0
 Pulse: 275ns, IFfilt: 5.0MHz; ppPol: HH HV VV
 TxPol: HHVV, PRF: 20 10 20 10 kHz
 Range: Delay 75m, Spacing 15m, Gates 100
 Ave. Pulses: 84, Rng/Prof Aspect@90m/s: 5.7

	Min	Max	Mean	Std	Varc%
hhN(dB)	-68.36	-64.57	-66.39	-76.42	9.9
vvN(dB)	-67.03	-63.75	-65.32	-75.27	10.1
hhL(dB)	-17.74	-6.07	-7.61	-14.37	21.1
vvL(dB)	-10.32	-2.75	-5.92	-11.14	30.1
ppN(m/s)	-12.29	12.64	0.01	4.16	
ppT(m/s)	-97.13	99.88	0.04	32.87	
hh/vv(dB)	-NaN	33.62	14.32	21.76	554.
vh/hh(dB)	-99.00	-99.00	-99.00	-99.00	-99.
hv/vv(dB)	-NaN	-34.03	-52.19	-46.73	351.
hnjmp(dB)	-2.55	2.23	0.16	-8.41	13.9
vnjmp(dB)	-2.07	2.24	0.17	-8.32	14.2



IHOP 2002 (dual-antenna config, modes 1,3,4,7) Data (cal: 49.0,50.0)

W2002-06-25-13-34-49 - PPMAG4
 IRIG:1,UTC: 13:34:34.16 to 15:04:05.92, Dur: 5371s
 TimeLngth: 5371.76s, TimeInt: 29ms (34.0pps)
 TimeCor=-13.0s, DSPDif(mn,min,mx):29,28,320
 PPS(min,max,std): 23,36,2.34
 Prof: 742 to 183151, NumProf(t/r): 182409/16567
 ProcTime/Recs: 14:47:48-14:55:54/149103-165669
 MxACQtime: 33ms; DRate: 190.1KB/s; Flags: 0, 0, 0
 Pulse: 275ns, IFfilt: 5.0MHz; ppPol: HH HV VV
 TxPol: HHVV, PRF: 20 10 20 10 kHz
 Range: Delay 75m, Spacing 15m, Gates 100
 Ave. Pulses: 84, Rng/Prof Aspect@90m/s: 5.7

	Min	Max	Mean	Std	Varc%
hhN(dB)	-68.36	-64.57	-66.39	-76.42	9.9
vvN(dB)	-67.03	-63.75	-65.32	-75.27	10.1
hhL(dB)	-17.74	-6.07	-7.61	-14.37	21.1
vvL(dB)	-10.32	-2.75	-5.92	-11.14	30.1
ppN(m/s)	-12.29	12.64	0.01	4.16	
ppT(m/s)	-97.13	99.88	0.04	32.87	
hh/vv(dB)	-NaN	33.62	14.32	21.76	554.
vh/hh(dB)	-99.00	-99.00	-99.00	-99.00	-99.
hv/vv(dB)	-NaN	-34.03	-52.19	-46.73	351.
hnjmp(dB)	-2.55	2.23	0.16	-8.41	13.9
vnjmp(dB)	-2.07	2.24	0.17	-8.32	14.2