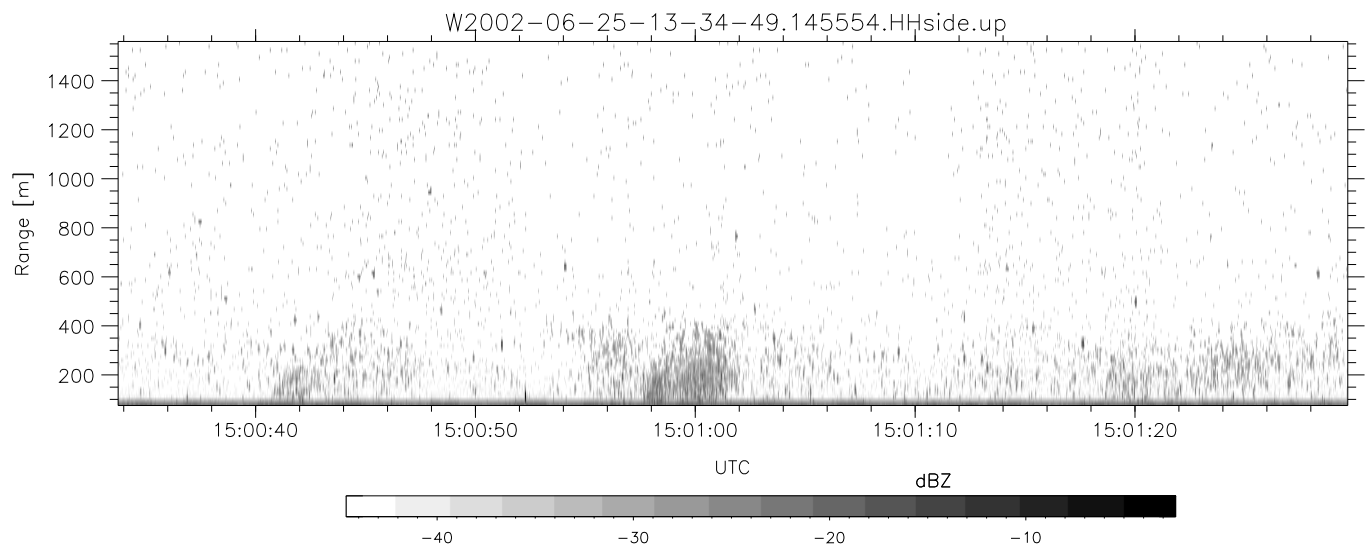
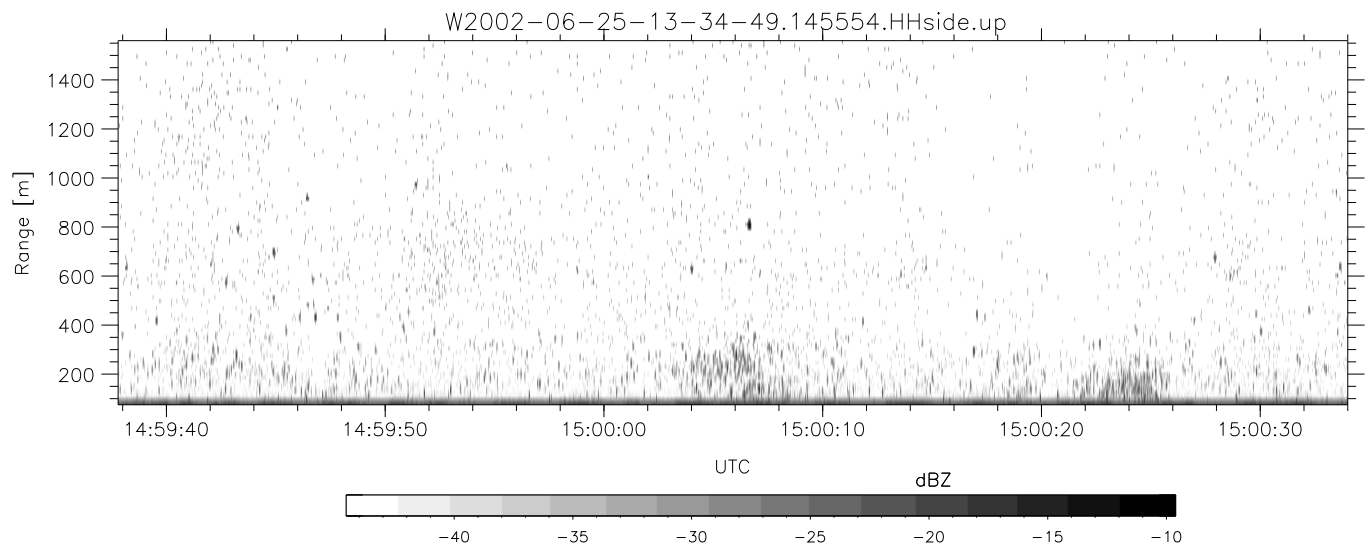
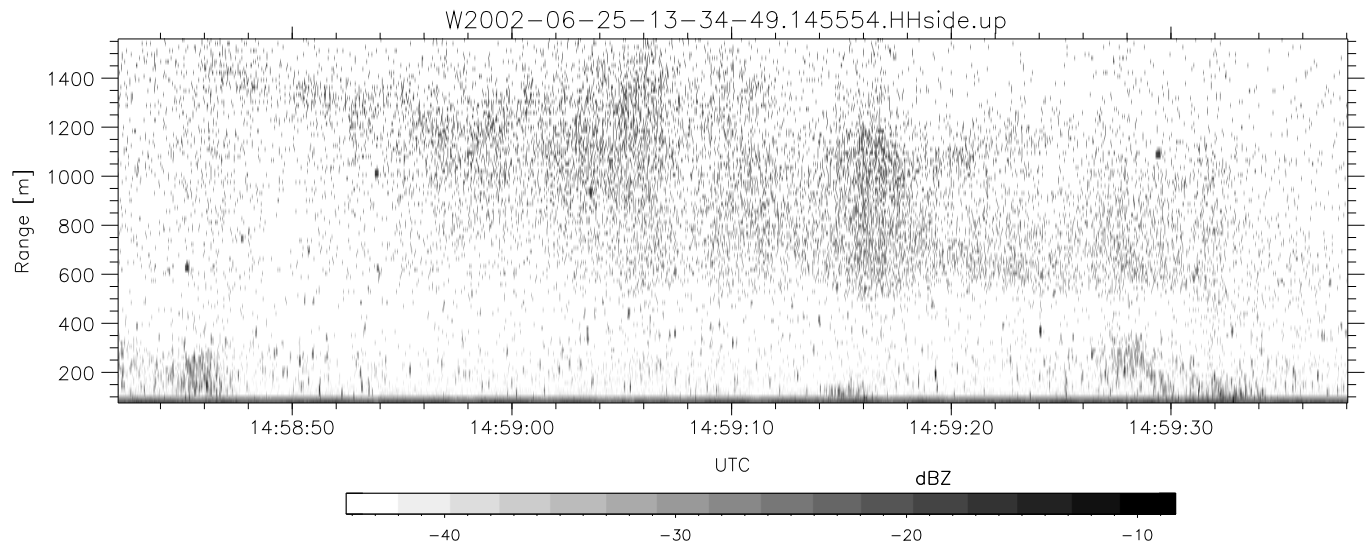


IHOP 2002 (dual-antenna config, modes 1,3,4,7) Data (cal: 49.0,50.0)

W2002-06-25-13-34-49 - PPMAG4

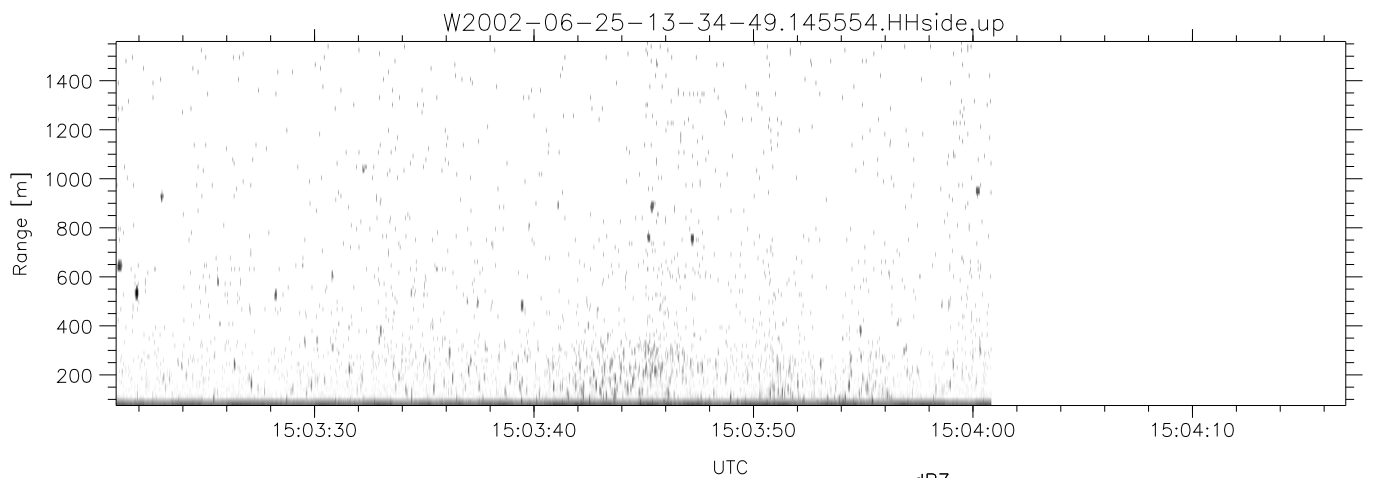
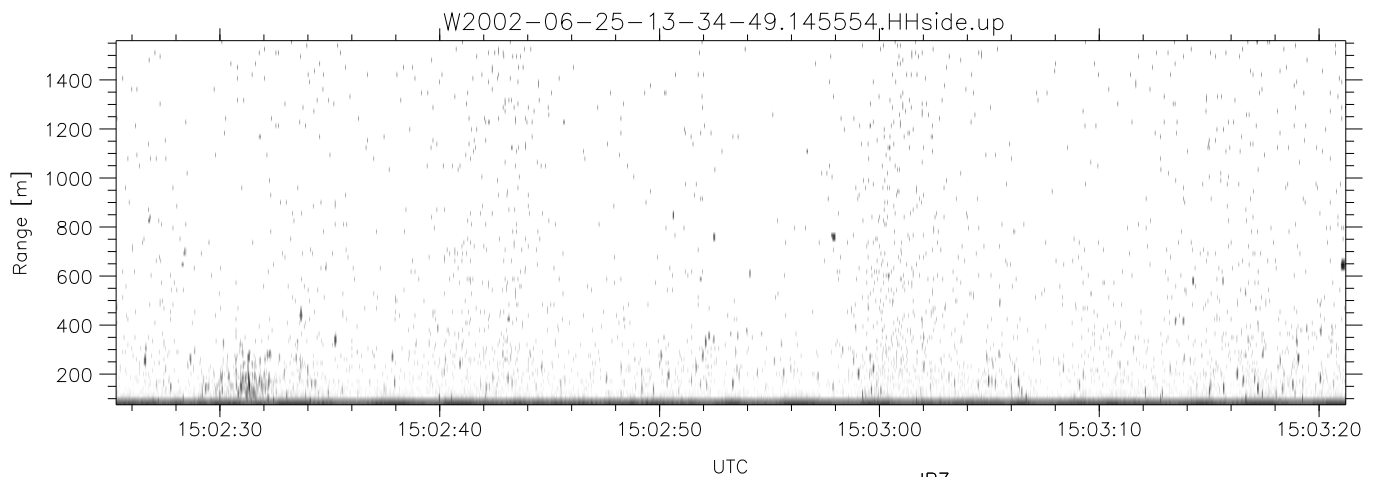
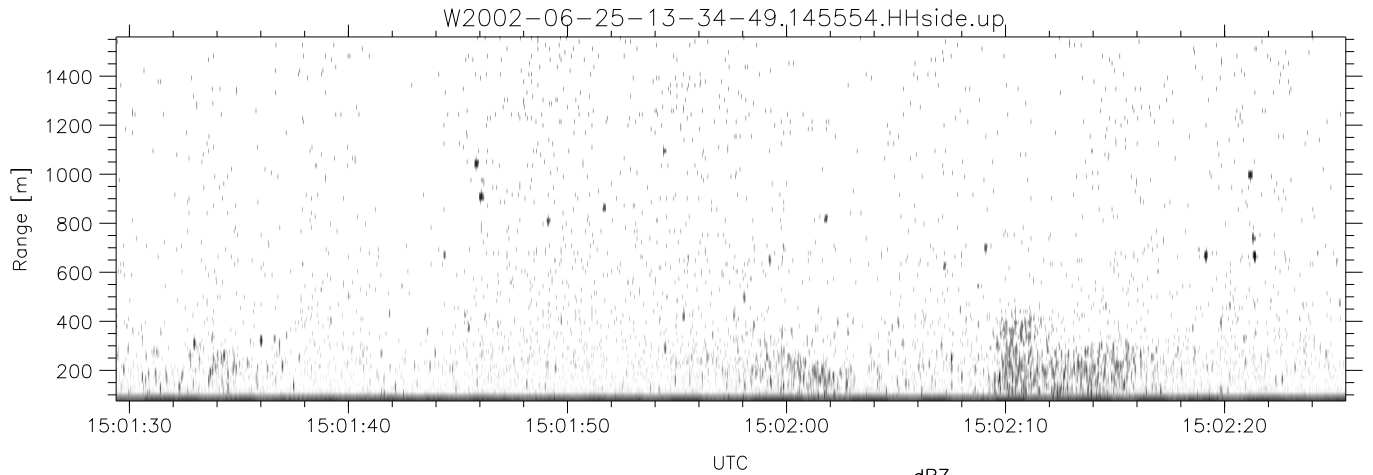
	Min	Max	Mean	Std	Varc%	
IRIG:1,UTC: 13:34:34.16 to 15:04:05.92, Dur: 5371s	hhN (dB)	-68.23	-64.90	-66.41	-76.41	10.0
TimeLngth: 5371.76s, TimeInt: 29ms (34.0pps)	vvN (dB)	-67.43	-63.69	-65.37	-75.33	10.1
TimeCor=-13.0s, DSPDif(mn,min,mx):29,28,364	hhL (dB)	-12.50	-6.28	-8.07	-14.77	21.4
PPS(min,max,std): 23,36,2.31	vvL (dB)	-9.10	-2.69	-6.45	-11.65	30.2
Prof: 742 to 183151, NumProf(t/r): 182409/16567	ppN (m/s)	-12.18	12.37	0.07	4.15	
ProcTime/Recs: 14:55:54-15:04:00/165670-182236	ppT (m/s)	-96.20	97.76	0.55	32.78	
MxACQtime: 33ms; DRate: 190.1KB/s; Flags: 0, 0, 0	hh/vv (dB)	-NaN	43.52	16.31	27.50	1316
Pulse: 275ns, IFilt: 5.0MHz; ppPol: HH HV VV	vh/hh (dB)	-33.38	-29.87	-31.72	-35.06	46.4
TxPol: HHVV, PRF: 20 10 20 10 kHz	hv/vv (dB)	-NaN	-27.72	-50.54	-45.45	322.
Range: Delay 75m, Spacing 15m, Gates 100	hn/jmp (dB)	-2.46	2.02	-0.09	-8.60	14.1
Ave. Pulses: 84, Rng/Prof Aspect@90m/s: 5.7	vn/jmp (dB)	-2.38	2.29	-0.08	-8.58	14.1



IHOP 2002 (dual-antenna config, modes 1,3,4,7) Data (cal: 49.0,50.0)

W2002-06-25-13-34-49 - PPMAG4

	Min	Max	Mean	Std	Varc%	
IRIG:1,UTC: 13:34:34.16 to 15:04:05.92, Dur: 5371s	hhN (dB)	-68.23	-64.90	-66.41	-76.41	10.0
TimeLngth: 5371.76s, TimeInt: 29ms (34.0pps)	vvN (dB)	-67.43	-63.69	-65.37	-75.33	10.1
TimeCor=-13.0s, DSPDif(mn,min,mx):29,28,364	hhL (dB)	-12.50	-6.28	-8.07	-14.77	21.4
PPS(min,max,std): 23,36,2.31	vvL (dB)	-9.10	-2.69	-6.45	-11.65	30.2
Prof: 742 to 183151, NumProf(t/r): 182409/16567	ppN (m/s)	-12.18	12.37	0.07	4.15	
ProcTime/Recs: 14:55:54-15:04:00/165670-182236	ppT (m/s)	-96.20	97.76	0.55	32.78	
MxACQtime: 33ms; DRate: 190.1KB/s; Flags: 0, 0, 0	hh/vv (dB)	-NaN	43.52	16.31	27.50	1316
Pulse: 275ns, IFilt: 5.0MHz; ppPol: HH HV VV	vh/hh (dB)	-33.38	-29.87	-31.72	-35.06	46.4
TxPol: HHVV, PRF: 20 10 20 10 kHz	hv/vv (dB)	-NaN	-27.72	-50.54	-45.45	322.
Range: Delay 75m, Spacing 15m, Gates 100	hn/jmp (dB)	-2.46	2.02	-0.09	-8.60	14.1
Ave. Pulses: 84, Rng/Prof Aspect@90m/s: 5.7	vn/jmp (dB)	-2.38	2.29	-0.08	-8.58	14.1



IHOP 2002 (dual-antenna config, modes 1,3,4,7) Data (cal: 49.0,50.0)

W2002-06-25-13-34-49 - PPMAG4
 IRIG:1,UTC: 13:34:34.16 to 15:04:05.92, Dur: 5371s
 TimeLngth: 5371.76s, TimeInt: 29ms (34.0pps)
 TimeCor=-13.0s, DSPDif(mn,min,mx):29,28,364
 PPS(min,max,std): 23,36,2.31
 Prof: 742 to 183151, NumProf(t/r): 182409/16567
 ProcTime/Recs: 14:55:54-15:04:00/165670-182236
 MxACQtime: 33ms; DRate: 190.1KB/s; Flags: 0, 0, 0
 Pulse: 275ns, IFfilt: 5.0MHz; ppPol: HH HV VV
 TxPol: HHVV, PRF: 20 10 20 10 kHz
 Range: Delay 75m, Spacing 15m, Gates 100
 Ave. Pulses: 84, Rng/Prof Aspect@90m/s: 5.7

	Min	Max	Mean	Std	Varc%
hhN(dB)	-68.23	-64.90	-66.41	-76.41	10.0
vvN(dB)	-67.43	-63.69	-65.37	-75.33	10.1
hhL(dB)	-12.50	-6.28	-8.07	-14.77	21.4
vvL(dB)	-9.10	-2.69	-6.45	-11.65	30.2
ppN(m/s)	-12.18	12.37	0.07	4.15	
ppT(m/s)	-96.20	97.76	0.55	32.78	
hh/vv(dB)	-NaN	43.52	16.31	27.50	1316
vh/hh(dB)	-33.38	-29.87	-31.72	-35.06	46.4
hv/vv(dB)	-NaN	-27.72	-50.54	-45.45	322.
hnjmp(dB)	-2.46	2.02	-0.09	-8.60	14.1
vnjmp(dB)	-2.38	2.29	-0.08	-8.58	14.1