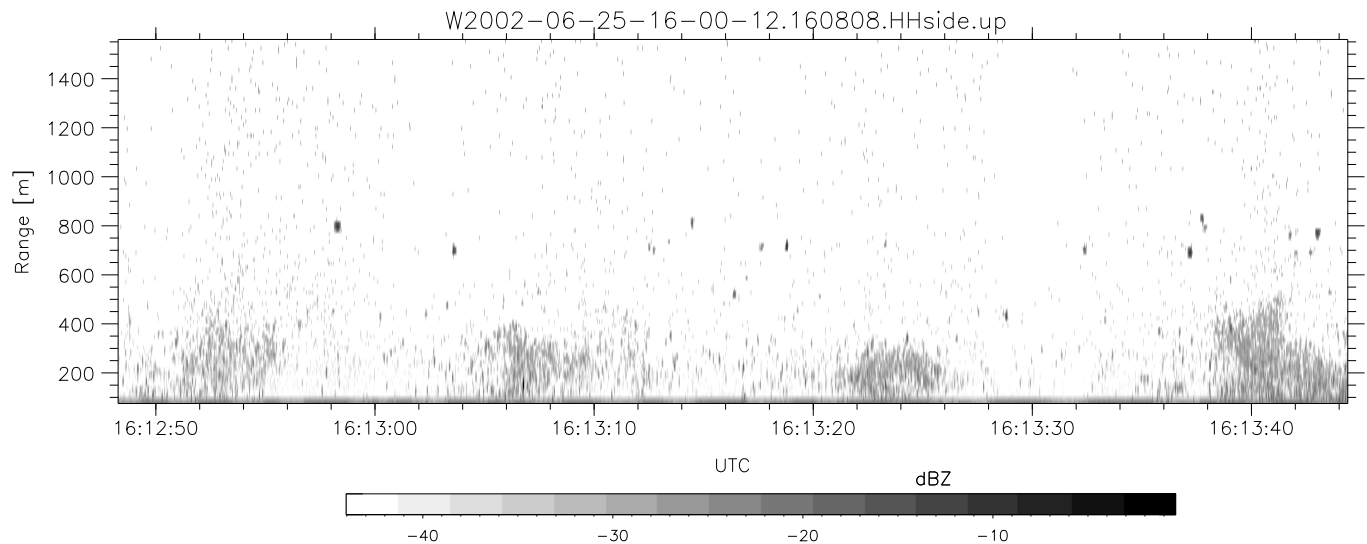
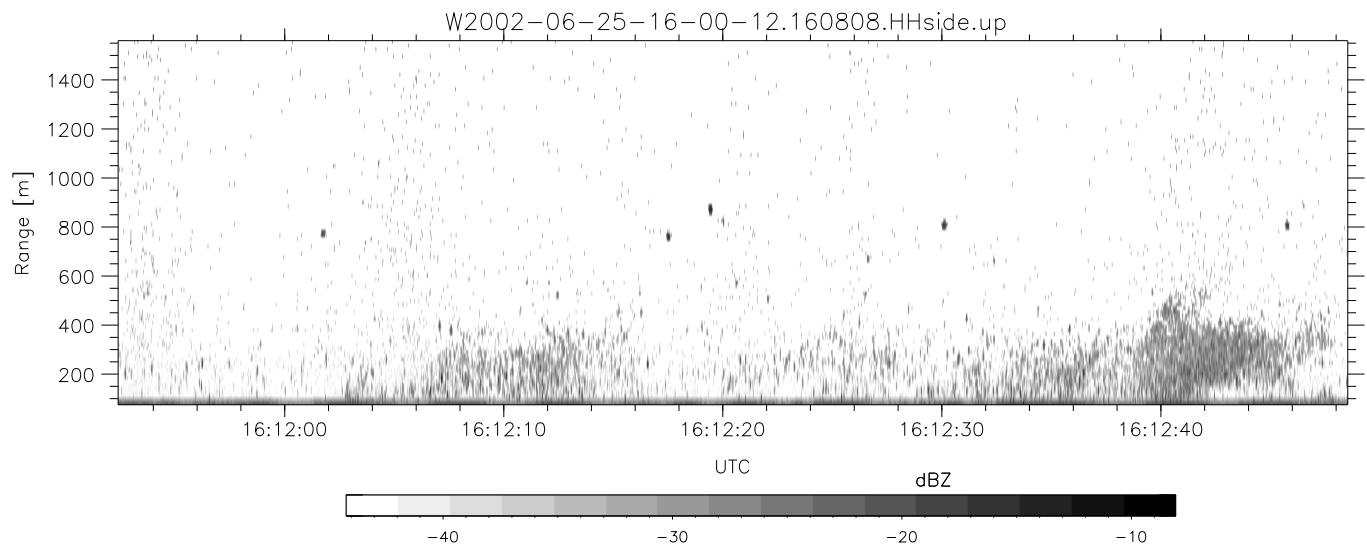
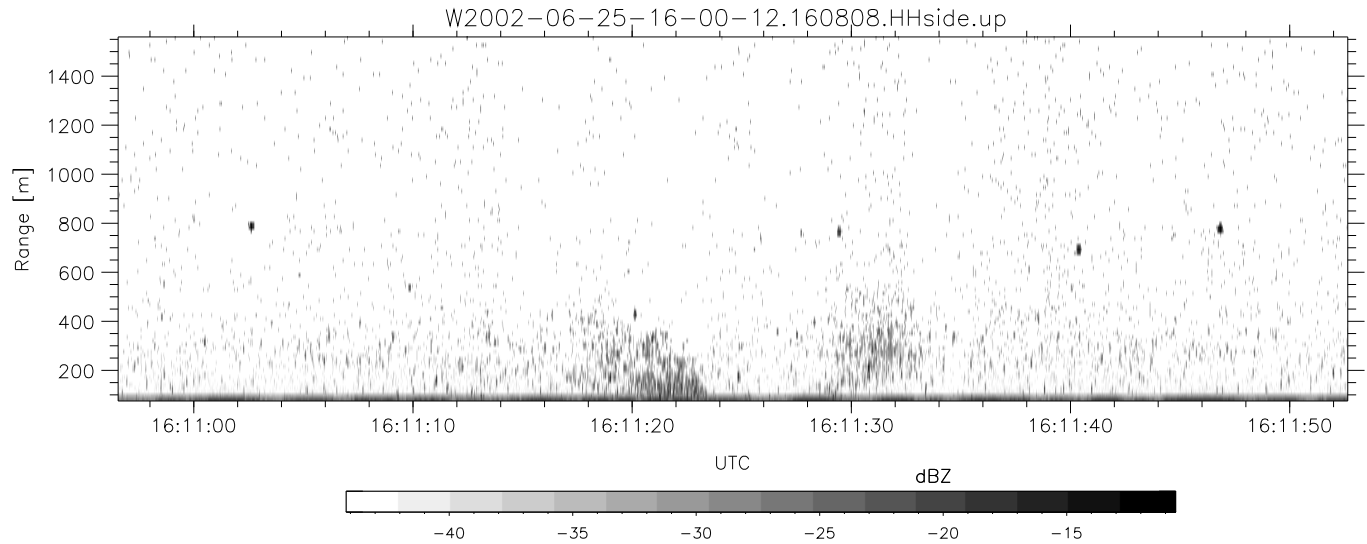


IHOP 2002 (dual-antenna config, modes 1,3,4,7) Data (cal: 49.0,50.0)

W2002-06-25-16-00-12 - PPMAG4  
 IRIG:1,UTC: 15:59:56.81 to 16:48:59.59, Dur: 2943s  
 TimeLngth: 2942.78s, TimeInt: 28ms (34.6pps)  
 TimeCor=-13.0s, DSPDif(mn,min,mx):28,28,317  
 PPS(min,max,std): 25,36,2.13  
 Prof: 1838 to 103691, NumProf(t/r): 101853/17069  
 ProcTime/Recs: 16:08:08-16:16:20/17069-34137  
 MxACQtime: 33ms; DRate: 193.7KB/s; Flags: 0, 0, 0  
 Pulse: 275ns, IFfilt: 5.0MHz; ppPol: HH HV VV  
 TxPol: HHVV, PRF: 20 10 20 10 kHz  
 Range: Delay 75m, Spacing 15m, Gates 100  
 Ave. Pulses: 84, Rng/Prof Aspect@90m/s: 5.8

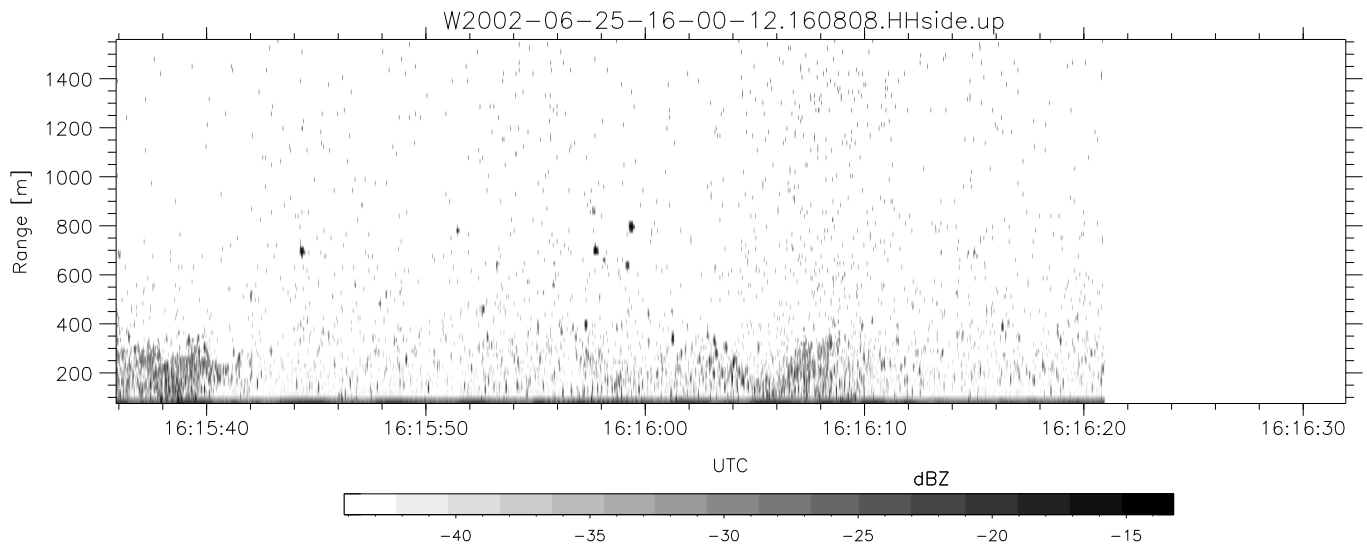
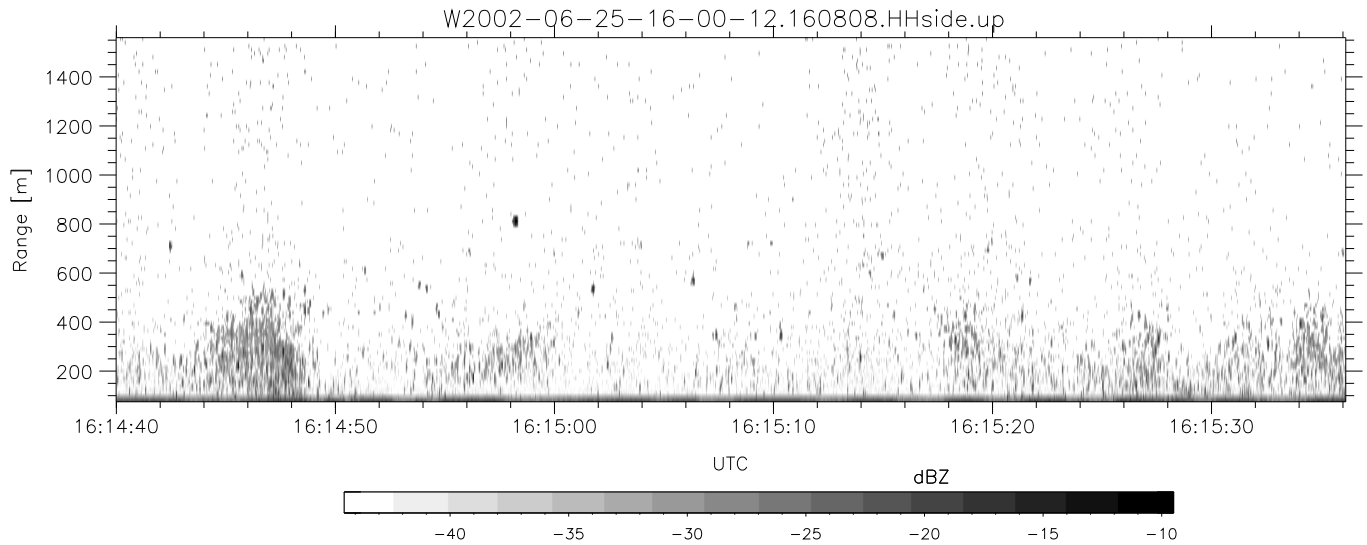
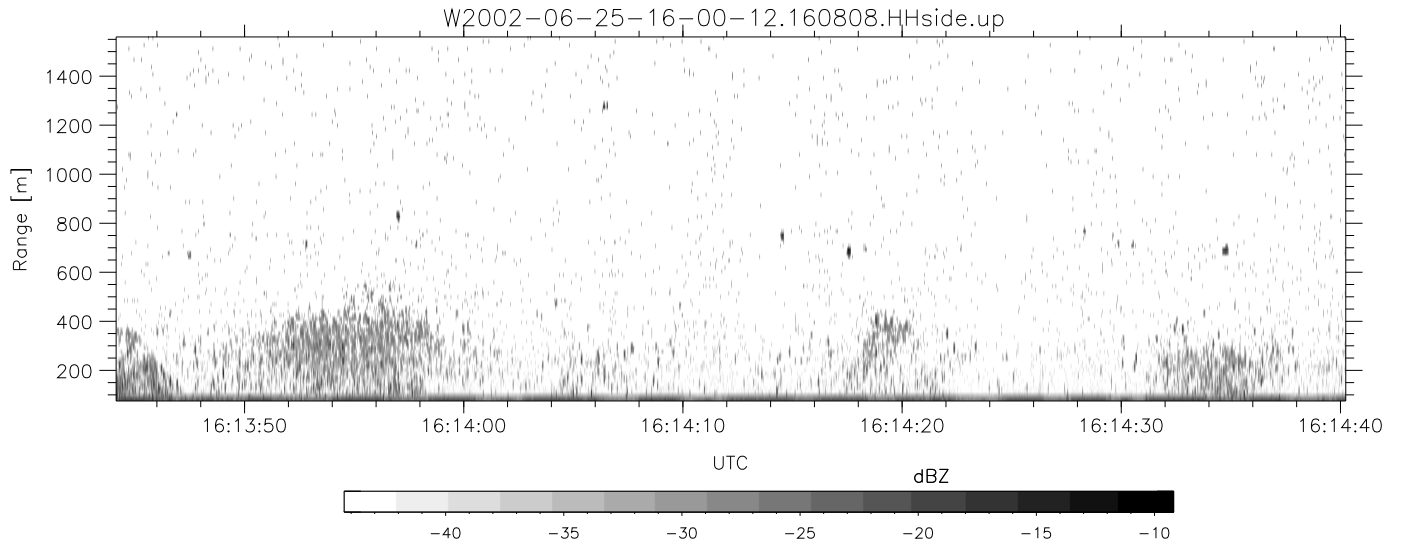
	Min	Max	Mean	Std	Varc%
hhN(dB)	-68.08	-64.63	-66.19	-76.24	9.9
vvN(dB)	-66.95	-63.55	-65.14	-75.13	10.0
hhL(dB)	-14.92	-6.16	-8.98	-13.05	39.1
vvL(dB)	-9.37	-2.45	-6.12	-10.50	36.5
ppN(m/s)	-12.74	12.57	-0.04	4.12	
ppT(m/s)	-100.6	99.32	-0.35	32.55	
hh/vv(dB)	-NaN	54.94	19.47	36.41	4948
vh/hh(dB)	-NaN	-35.37	-38.87	-39.60	84.4
hv/vv(dB)	-NaN	-34.09	-52.63	-46.84	378.
hnjmp(dB)	-2.52	2.52	0.18	-8.42	13.8
vnjmp(dB)	-2.06	2.36	0.18	-8.33	14.1



IHOP 2002 (dual-antenna config, modes 1,3,4,7) Data (cal: 49.0,50.0)

W2002-06-25-16-00-12 - PPMAG4  
 IRIG:1,UTC: 15:59:56.81 to 16:48:59.59, Dur: 2943s  
 TimeLngth: 2942.78s, TimeInt: 28ms (34.6pps)  
 TimeCor=-13.0s, DSPDif(mn,min,mx):28,28,317  
 PPS(min,max,std): 25,36,2.13  
 Prof: 1838 to 103691, NumProf(t/r): 101853/17069  
 ProcTime/Recs: 16:08:08-16:16:20/17069-34137  
 MxACQtime: 33ms; DRate: 193.7KB/s; Flags: 0, 0, 0  
 Pulse: 275ns, IFfilt: 5.0MHz; ppPol: HH HV VV  
 TxPol: HHVV, PRF: 20 10 20 10 kHz  
 Range: Delay 75m, Spacing 15m, Gates 100  
 Ave. Pulses: 84, Rng/Prof Aspect@90m/s: 5.8

	Min	Max	Mean	Std	Varc%
hhN(dB)	-68.08	-64.63	-66.19	-76.24	9.9
vvN(dB)	-66.95	-63.55	-65.14	-75.13	10.0
hhL(dB)	-14.92	-6.16	-8.98	-13.05	39.1
vvL(dB)	-9.37	-2.45	-6.12	-10.50	36.5
ppN(m/s)	-12.74	12.57	-0.04	4.12	
ppT(m/s)	-100.6	99.32	-0.35	32.55	
hh/vv(dB)	-NaN	54.94	19.47	36.41	4948
vh/hh(dB)	-NaN	-35.37	-38.87	-39.60	84.4
hv/vv(dB)	-NaN	-34.09	-52.63	-46.84	378.
hnjmp(dB)	-2.52	2.52	0.18	-8.42	13.8
vnjmp(dB)	-2.06	2.36	0.18	-8.33	14.1



IHOP 2002 (dual-antenna config, modes 1,3,4,7) Data (cal: 49.0,50.0)

W2002-06-25-16-00-12 - PPMAG4  
 IRIG:1,UTC: 15:59:56.81 to 16:48:59.59, Dur: 2943s  
 TimeLngth: 2942.78s, TimeInt: 28ms (34.6pps)  
 TimeCor=-13.0s, DSPDif(mn,min,mx):28,28,317  
 PPS(min,max,std): 25,36,2.13  
 Prof: 1838 to 103691, NumProf(t/r): 101853/17069  
 ProcTime/Recs: 16:08:08-16:16:20/17069-34137  
 MxACQtime: 33ms; DRate: 193.7KB/s; Flags: 0, 0, 0  
 Pulse: 275ns, IFfilt: 5.0MHz; ppPol: HH HV VV  
 TxPol: HHVV, PRF: 20 10 20 10 kHz  
 Range: Delay 75m, Spacing 15m, Gates 100  
 Ave. Pulses: 84, Rng/Prof Aspect@90m/s: 5.8

	Min	Max	Mean	Std	Varc%
hhN(dB)	-68.08	-64.63	-66.19	-76.24	9.9
vvN(dB)	-66.95	-63.55	-65.14	-75.13	10.0
hhL(dB)	-14.92	-6.16	-8.98	-13.05	39.1
vvL(dB)	-9.37	-2.45	-6.12	-10.50	36.5
ppN(m/s)	-12.74	12.57	-0.04	4.12	
ppT(m/s)	-100.6	99.32	-0.35	32.55	
hh/vv(dB)	-NaN	54.94	19.47	36.41	4948
vh/hh(dB)	-NaN	-35.37	-38.87	-39.60	84.4
hv/vv(dB)	-NaN	-34.09	-52.63	-46.84	378.
hnjmp(dB)	-2.52	2.52	0.18	-8.42	13.8
vnjmp(dB)	-2.06	2.36	0.18	-8.33	14.1