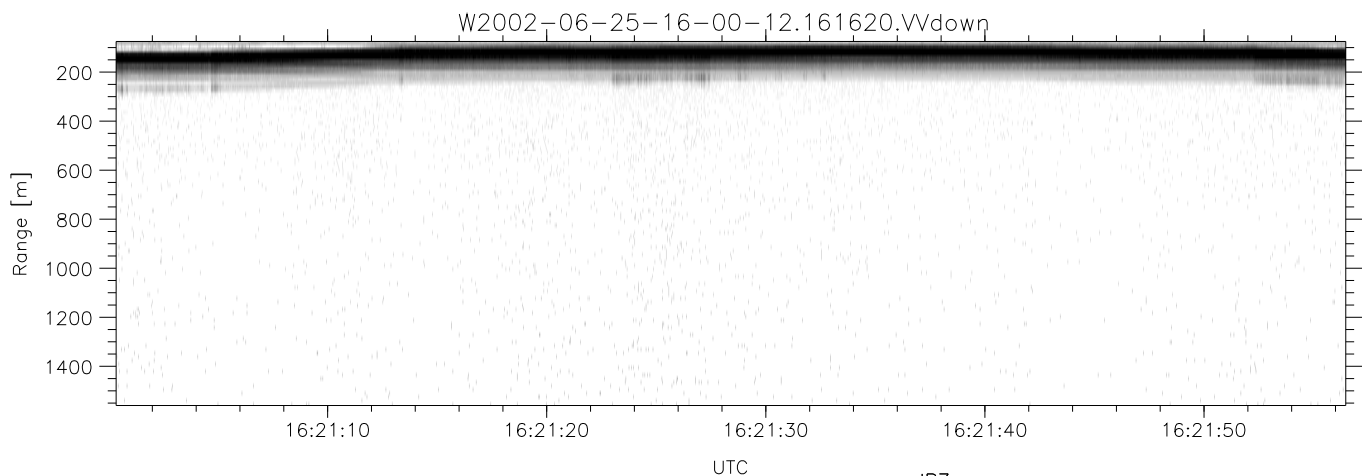
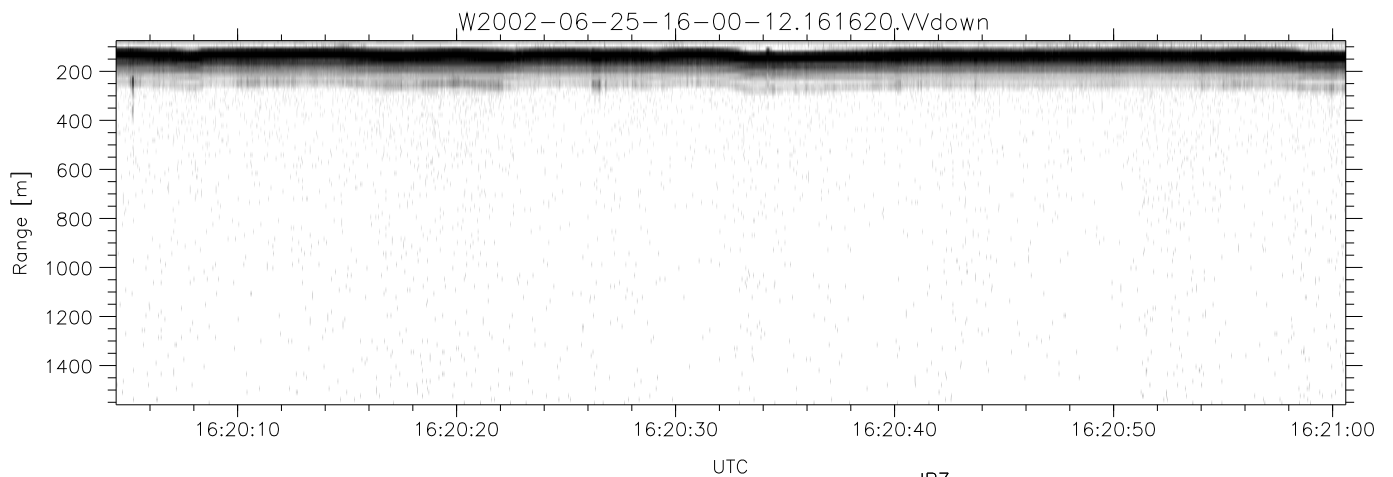
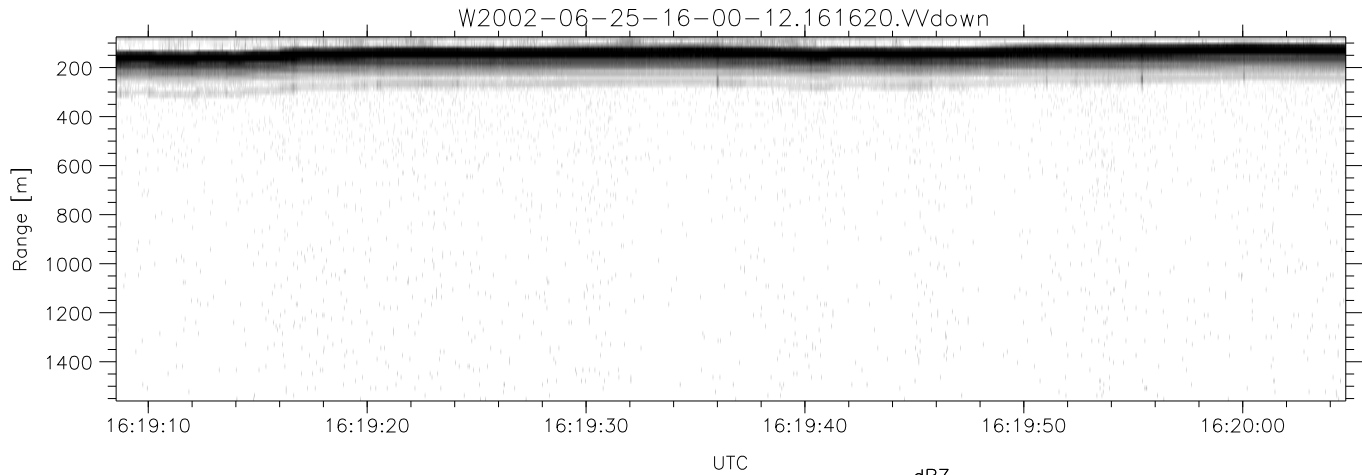


IHOP 2002 (dual-antenna config, modes 1,3,4,7) Data (cal: 49.0,50.0)

W2002-06-25-16-00-12 - PPMAG4
 IRIG:1,UTC: 15:59:56.81 to 16:48:59.59, Dur: 2943s
 TimeLngth: 2942.78s, TimeInt: 28ms (34.6pps)
 TimeCor=-13.0s, DSPDif(mn,min,mx):28,28,306
 PPS(min,max,std): 26,36,2.11
 Prof: 1838 to 103691, NumProf(t/r): 101853/17069
 ProcTime/Recs: 16:16:20-16:24:33/34138-51206
 MxAcQtime: 33ms; DRate: 193.7KB/s; Flags: 0, 0, 0
 Pulse: 275ns, IFilt: 5.0MHz; ppPol: HH HV VV
 TxPol: HHVV, PRF: 20 10 20 10 kHz
 Range: Delay 75m, Spacing 15m, Gates 100
 Ave. Pulses: 84, Rng/Prof Aspect@90m/s: 5.8

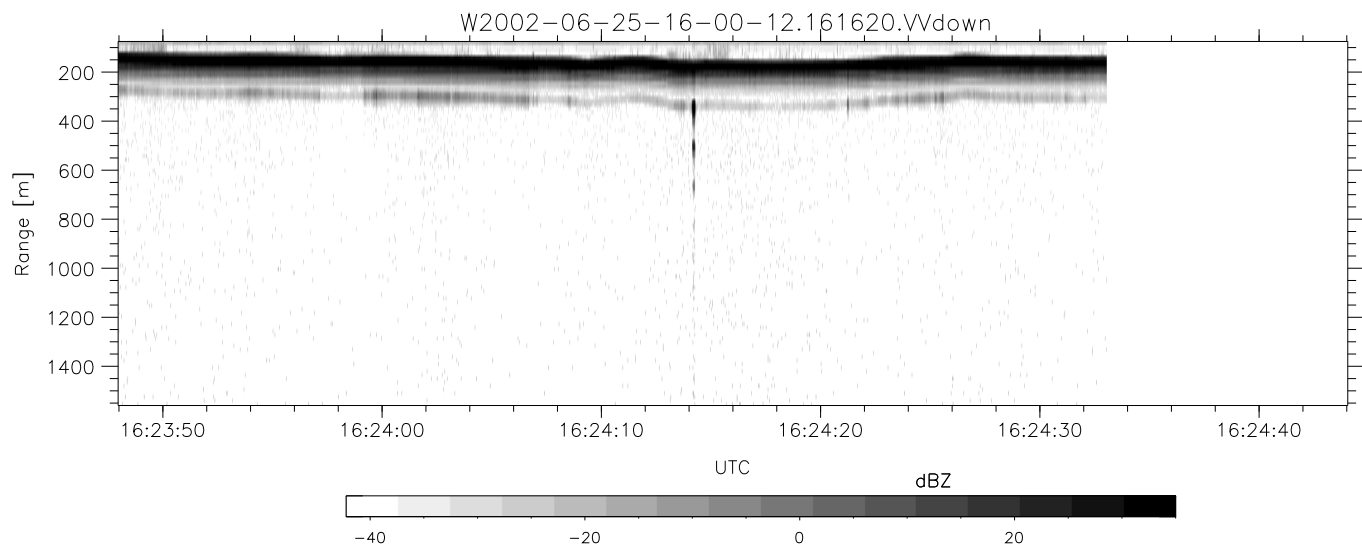
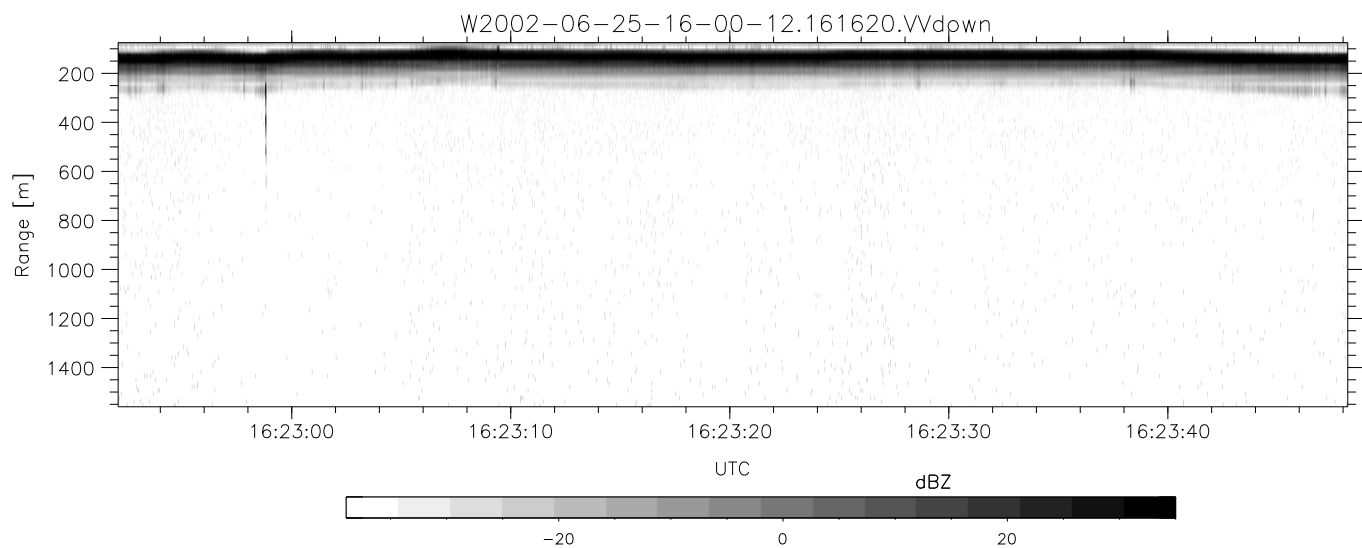
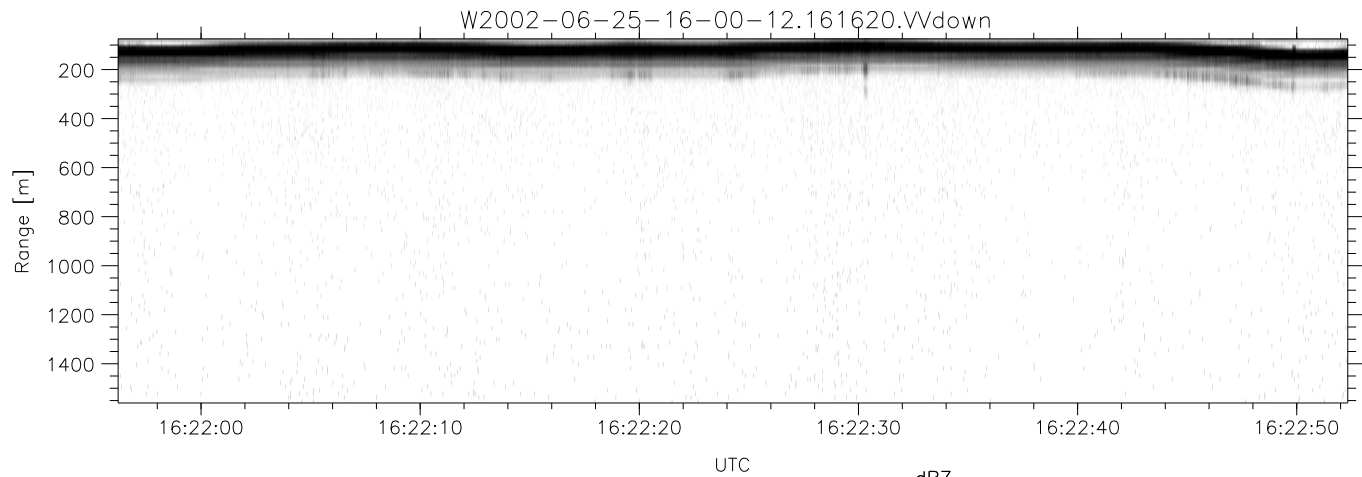
	Min	Max	Mean	Std	Varc%
hhN(dB)	-68.13	-64.69	-66.21	-76.24	9.9
vvN(dB)	-66.98	-63.58	-65.18	-75.19	10.0
hhL(dB)	-14.06	-6.36	-9.33	-13.23	40.7
vvL(dB)	-10.04	-2.68	-6.29	-10.52	37.8
ppN(m/s)	-12.89	12.54	-0.07	4.10	
ppT(m/s)	-101.8	99.06	-0.59	32.41	
hh/vv(dB)	-NaN	38.68	2.30	25.98	2333
vh/hh(dB)	-53.60	-1.60	-6.46	-6.22	105.
hv/vv(dB)	-NaN	-17.19	-47.89	-40.71	522.
hnjmp(dB)	-2.31	1.96	-0.08	-8.62	14.0
vnjmp(dB)	-2.21	2.27	-0.09	-8.62	14.0



IHOP 2002 (dual-antenna config, modes 1,3,4,7) Data (cal: 49.0,50.0)

W2002-06-25-16-00-12 - PPMAG4
 IRIG:1,UTC: 15:59:56.81 to 16:48:59.59, Dur: 2943s
 TimeLngth: 2942.78s, TimeInt: 28ms (34.6pps)
 TimeCor=-13.0s, DSPDif(mn,min,mx):28,28,306
 PPS(min,max,std): 26,36,2.11
 Prof: 1838 to 103691, NumProf(t/r): 101853/17069
 ProcTime/Recs: 16:16:20-16:24:33/34138-51206
 MxACQtime: 33ms; DRate: 193.7KB/s; Flags: 0, 0, 0
 Pulse: 275ns, IFfilt: 5.0MHz; ppPol: HH HV VV
 TxPol: HHVV, PRF: 20 10 20 10 kHz
 Range: Delay 75m, Spacing 15m, Gates 100
 Ave. Pulses: 84, Rng/Prof Aspect@90m/s: 5.8

	Min	Max	Mean	Std	Varc%
hhN(dB)	-68.13	-64.69	-66.21	-76.24	9.9
vvN(dB)	-66.98	-63.58	-65.18	-75.19	10.0
hhL(dB)	-14.06	-6.36	-9.33	-13.23	40.7
vvL(dB)	-10.04	-2.68	-6.29	-10.52	37.8
ppN(m/s)	-12.89	12.54	-0.07	4.10	
ppT(m/s)	-101.8	99.06	-0.59	32.41	
hh/vv(dB)	-NaN	38.68	2.30	25.98	2333
vh/hh(dB)	-53.60	-1.60	-6.46	-6.22	105.
hv/vv(dB)	-NaN	-17.19	-47.89	-40.71	522.
hnjmp(dB)	-2.31	1.96	-0.08	-8.62	14.0
vnjmp(dB)	-2.21	2.27	-0.09	-8.62	14.0



IHOP 2002 (dual-antenna config, modes 1,3,4,7) Data (cal: 49.0,50.0)

W2002-06-25-16-00-12 - PPMAG4
 IRIG:1,UTC: 15:59:56.81 to 16:48:59.59, Dur: 2943s
 TimeLngth: 2942.78s, TimeInt: 28ms (34.6pps)
 TimeCor=-13.0s, DSPDif(mn,min,mx):28,28,306
 PPS(min,max,std): 26,36,2.11
 Prof: 1838 to 103691, NumProf(t/r): 101853/17069
 ProcTime/Recs: 16:16:20-16:24:33/34138-51206
 MxACQtime: 33ms; DRate: 193.7KB/s; Flags: 0, 0, 0
 Pulse: 275ns, IFfilt: 5.0MHz; ppPol: HH HV VV
 TxPol: HHVV, PRF: 20 10 20 10 kHz
 Range: Delay 75m, Spacing 15m, Gates 100
 Ave. Pulses: 84, Rng/Prof Aspect@90m/s: 5.8

	Min	Max	Mean	Std	Varc%
hhN(dB)	-68.13	-64.69	-66.21	-76.24	9.9
vvN(dB)	-66.98	-63.58	-65.18	-75.19	10.0
hhL(dB)	-14.06	-6.36	-9.33	-13.23	40.7
vvL(dB)	-10.04	-2.68	-6.29	-10.52	37.8
ppN(m/s)	-12.89	12.54	-0.07	4.10	
ppT(m/s)	-101.8	99.06	-0.59	32.41	
hh/vv(dB)	-NaN	38.68	2.30	25.98	2333
vh/hh(dB)	-53.60	-1.60	-6.46	-6.22	105.
hv/vv(dB)	-NaN	-17.19	-47.89	-40.71	522.
hnjmp(dB)	-2.31	1.96	-0.08	-8.62	14.0
vnjmp(dB)	-2.21	2.27	-0.09	-8.62	14.0