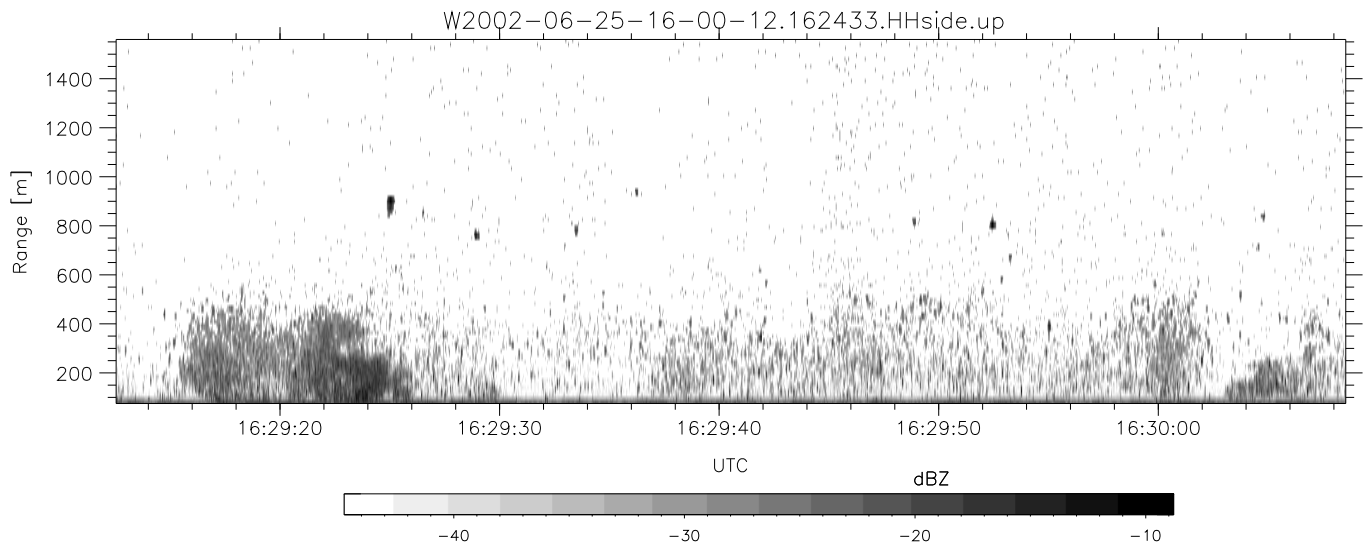
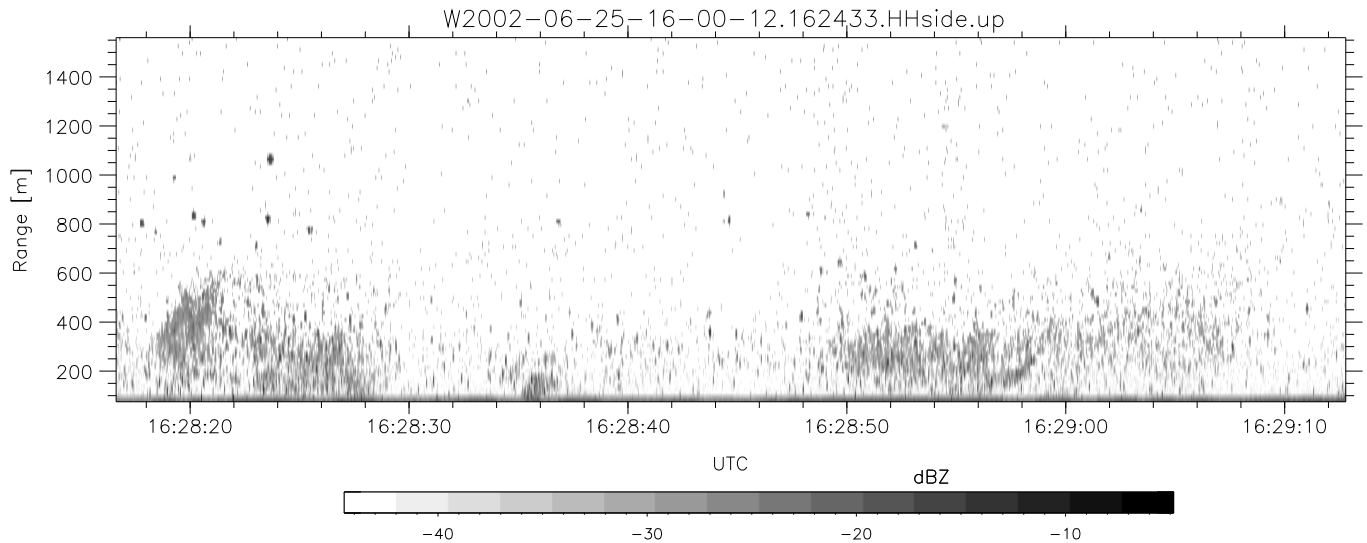
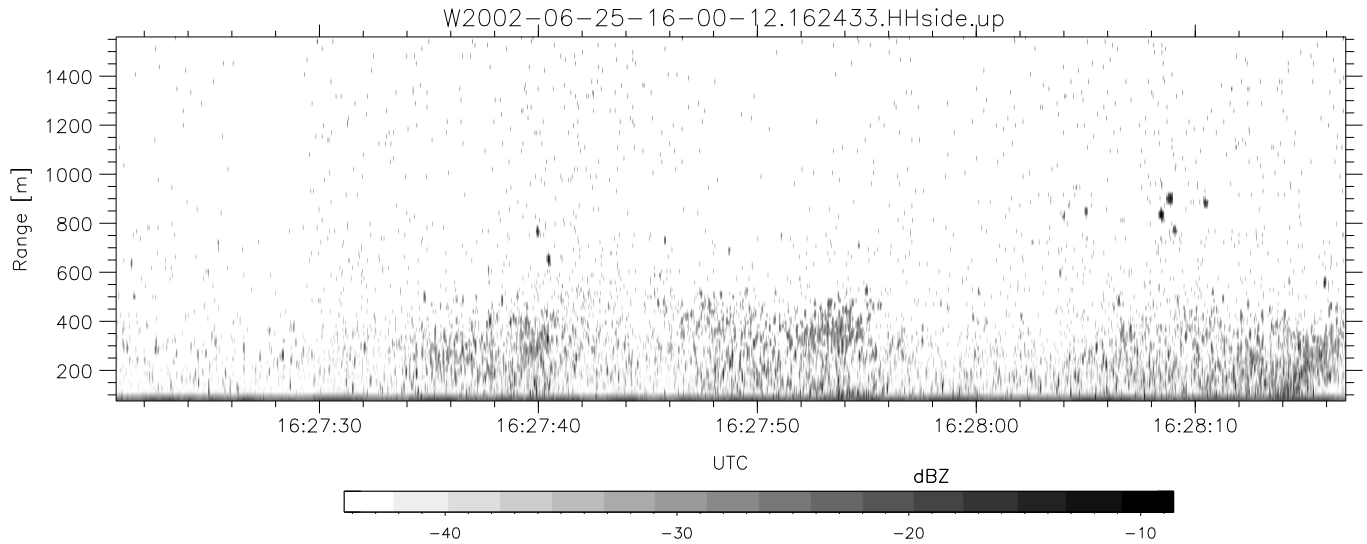


IHOP 2002 (dual-antenna config, modes 1,3,4,7) Data (cal: 49.0,50.0)

W2002-06-25-16-00-12 - PPMAG4

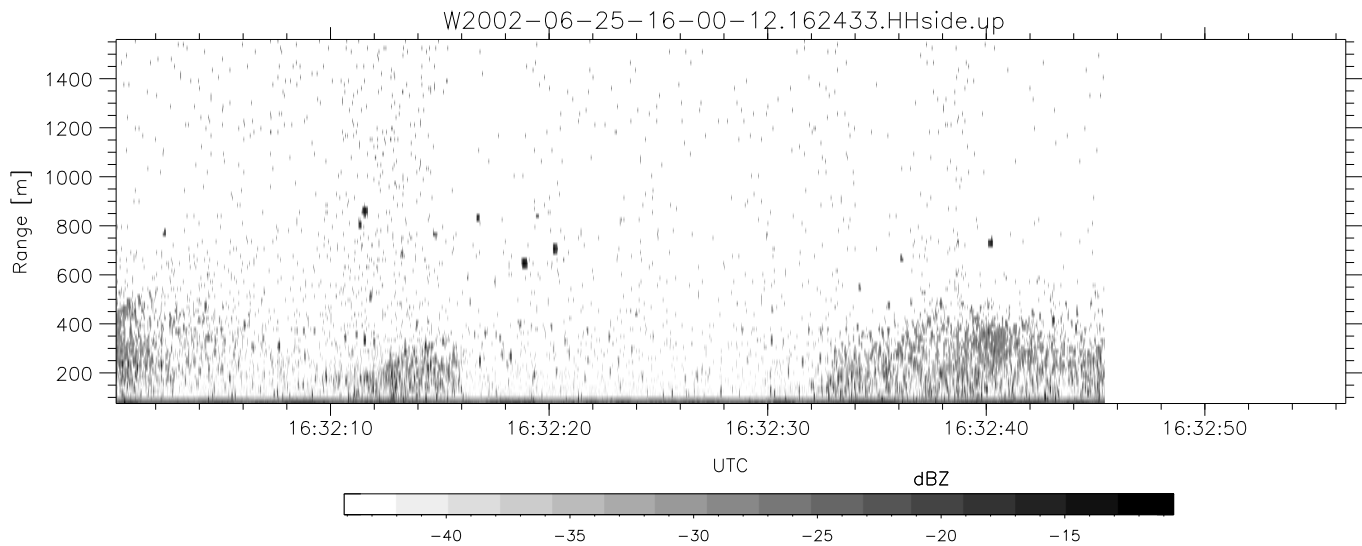
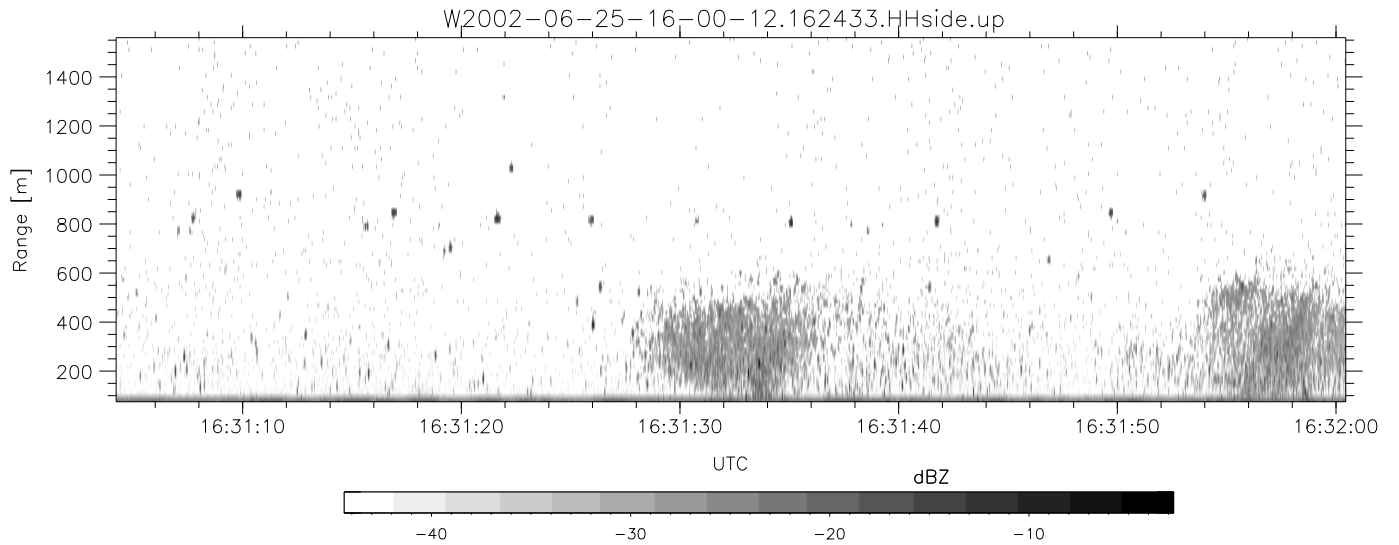
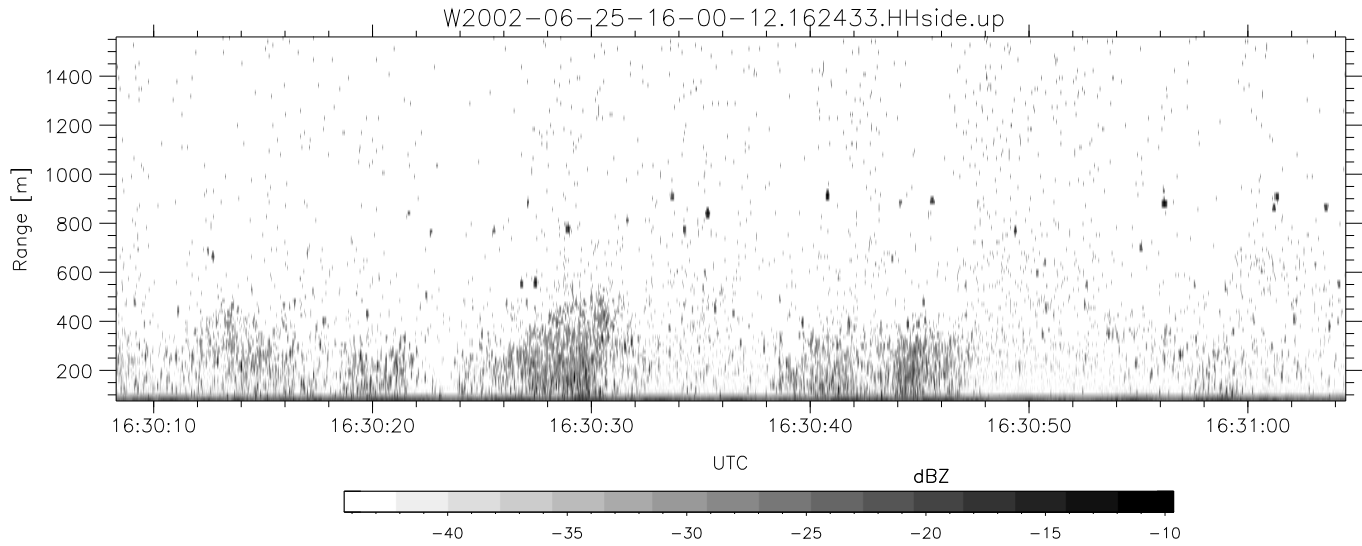
	Min	Max	Mean	Std	Varc%
IRIG:1,UTC: 15:59:56.81 to 16:48:59.59, Dur: 2943s	-68.07	-64.74	-66.27	-76.28	10.0
TimeLngth: 2942.78s, TimeInt: 28ms (34.6pps)	-67.14	-63.63	-65.23	-75.21	10.1
TimeCor=-13.0s, DSPDif(mn,min,mx):28,28,333	-14.05	-6.39	-9.29	-13.76	35.7
PPS(min,max,std): 25,36,2.18	-9.86	-2.87	-6.45	-11.05	34.7
Prof: 1838 to 103691, NumProf(t/r): 101853/17069	ppN(m/s)	-12.22	12.57	-0.04	4.13
ProcTime/Recs: 16:24:33-16:32:45/51207-68275	ppT(m/s)	-96.57	99.29	-0.30	32.62
MxAcQtime: 33ms; DRate: 193.7KB/s; Flags: 0, 0, 0	hh/vv(dB)	-NaN	38.84	6.75	26.37 9152
Pulse: 275ns, IFilt: 5.0MHz; ppPol: HH HV VV	vh/hh(dB)	-42.53	-1.64	-7.83	-6.18 146.
TxPol: HHVV, PRF: 20 10 20 10 kHz	hv/vv(dB)	-NaN	-19.69	-38.66	-34.57 256.
Range: Delay 75m, Spacing 15m, Gates 100	hn/jmp(dB)	-2.09	2.51	0.18	-8.36 14.0
Ave. Pulses: 84, Rng/Prof Aspect@90m/s: 5.8	vn/jmp(dB)	-2.17	2.63	0.18	-8.38 13.9



IHOP 2002 (dual-antenna config, modes 1,3,4,7) Data (cal: 49.0,50.0)

W2002-06-25-16-00-12 - PPMAG4
 IRIG:1,UTC: 15:59:56.81 to 16:48:59.59, Dur: 2943s
 TimeLngth: 2942.78s, TimeInt: 28ms (34.6pps)
 TimeCor=-13.0s, DSPDif(mn,min,mx):28,28,333
 PPS(min,max,std): 25,36,2.18
 Prof: 1838 to 103691, NumProf(t/r): 101853/17069
 ProcTime/Recs: 16:24:33-16:32:45/51207-68275
 MxACQtime: 33ms; DRate: 193.7KB/s; Flags: 0, 0, 0
 Pulse: 275ns, IFfilt: 5.0MHz; ppPol: HH HV VV
 TxPol: HHVV, PRF: 20 10 20 10 kHz
 Range: Delay 75m, Spacing 15m, Gates 100
 Ave. Pulses: 84, Rng/Prof Aspect@90m/s: 5.8

	Min	Max	Mean	Std	Varc%
hhN(dB)	-68.07	-64.74	-66.27	-76.28	10.0
vvN(dB)	-67.14	-63.63	-65.23	-75.21	10.1
hhL(dB)	-14.05	-6.39	-9.29	-13.76	35.7
vvL(dB)	-9.86	-2.87	-6.45	-11.05	34.7
ppN(m/s)	-12.22	12.57	-0.04	4.13	
ppT(m/s)	-96.57	99.29	-0.30	32.62	
hh/vv(dB)	-NaN	38.84	6.75	26.37	9152
vh/hh(dB)	-42.53	-1.64	-7.83	-6.18	146.
hv/vv(dB)	-NaN	-19.69	-38.66	-34.57	256.
hnjmp(dB)	-2.09	2.51	0.18	-8.36	14.0
vnjmp(dB)	-2.17	2.63	0.18	-8.38	13.9



IHOP 2002 (dual-antenna config, modes 1,3,4,7) Data (cal: 49.0,50.0)

W2002-06-25-16-00-12 - PPMAG4
 IRIG:1,UTC: 15:59:56.81 to 16:48:59.59, Dur: 2943s
 TimeLngth: 2942.78s, TimeInt: 28ms (34.6pps)
 TimeCor=-13.0s, DSPDif(mn,min,mx):28,28,333
 PPS(min,max,std): 25,36,2.18
 Prof: 1838 to 103691, NumProf(t/r): 101853/17069
 ProcTime/Recs: 16:24:33-16:32:45/51207-68275
 MxACQtime: 33ms; DRate: 193.7KB/s; Flags: 0, 0, 0
 Pulse: 275ns, IFilt: 5.0MHz; ppPol: HH HV VV
 TxPol: HHVV, PRF: 20 10 20 10 kHz
 Range: Delay 75m, Spacing 15m, Gates 100
 Ave. Pulses: 84, Rng/Prof Aspect@90m/s: 5.8

	Min	Max	Mean	Std	Varc%
hhN (dB)	-68.07	-64.74	-66.27	-76.28	10.0
vvN (dB)	-67.14	-63.63	-65.23	-75.21	10.1
hhL (dB)	-14.05	-6.39	-9.29	-13.76	35.7
vvL (dB)	-9.86	-2.87	-6.45	-11.05	34.7
ppN (m/s)	-12.22	12.57	-0.04	4.13	
ppT (m/s)	-96.57	99.29	-0.30	32.62	
hh/vv (dB)	-NaN	38.84	6.75	26.37	9152
vh/hh (dB)	-42.53	-1.64	-7.83	-6.18	146.
hv/vv (dB)	-NaN	-19.69	-38.66	-34.57	256.
hnjmp (dB)	-2.09	2.51	0.18	-8.36	14.0
vnjmp (dB)	-2.17	2.63	0.18	-8.38	13.9