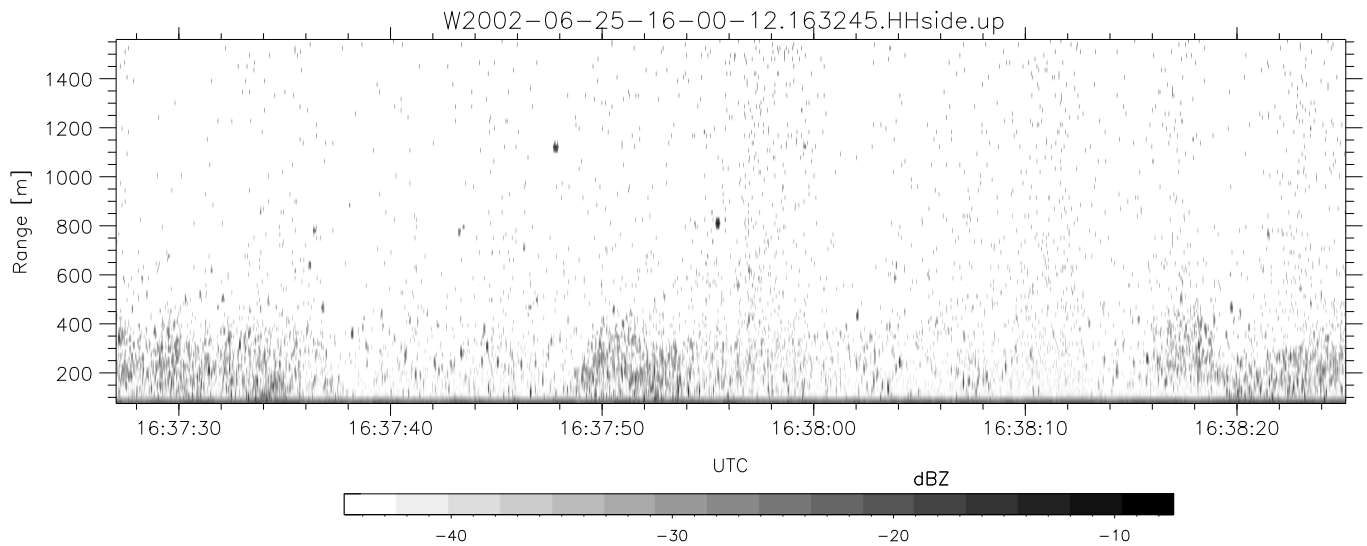
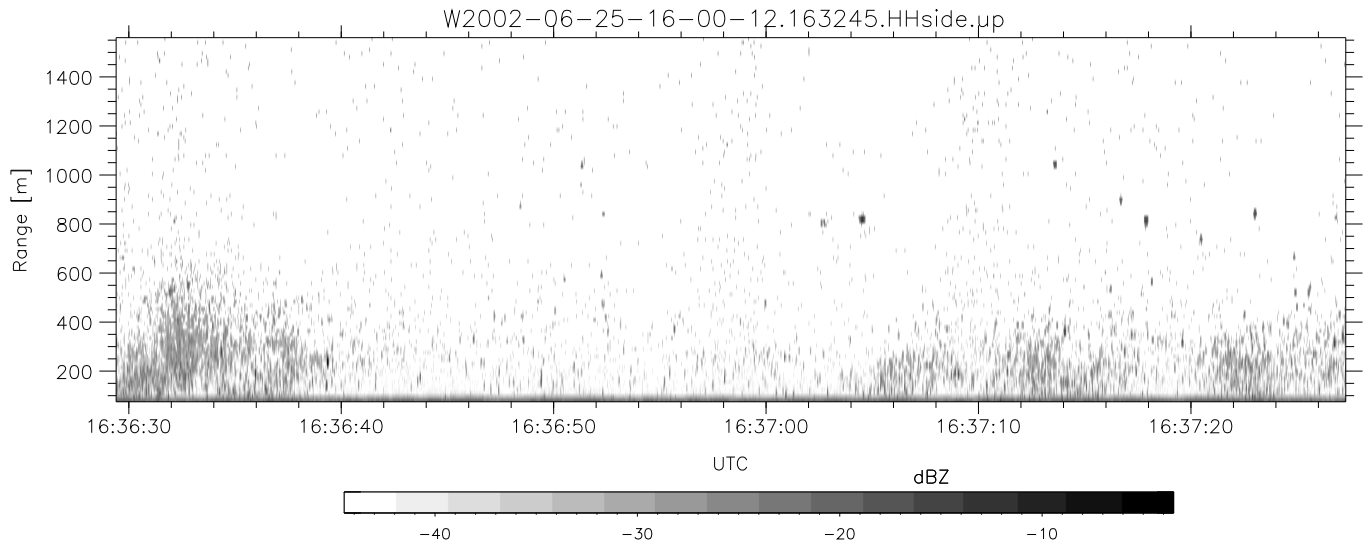
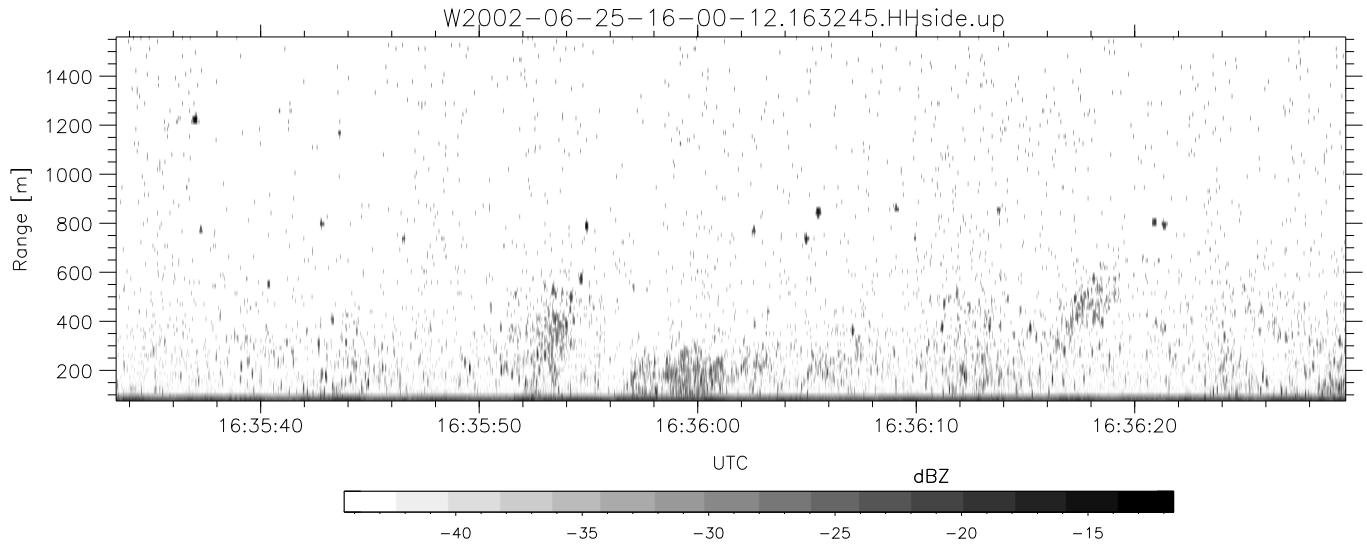


IHOP 2002 (dual-antenna config, modes 1,3,4,7) Data (cal: 49.0,50.0)

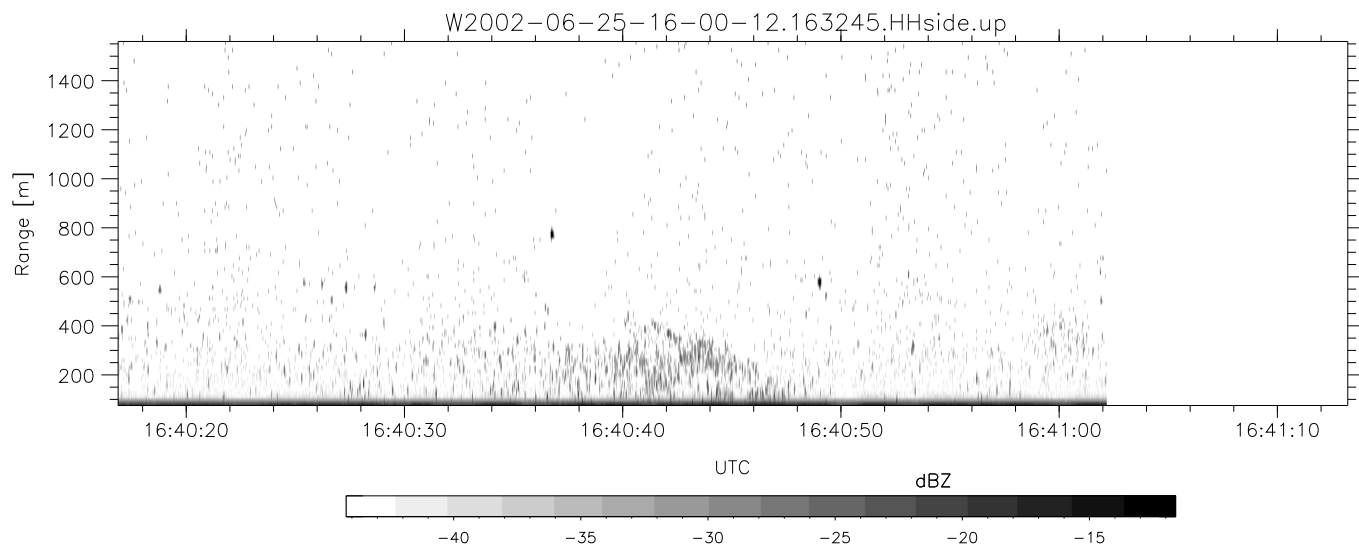
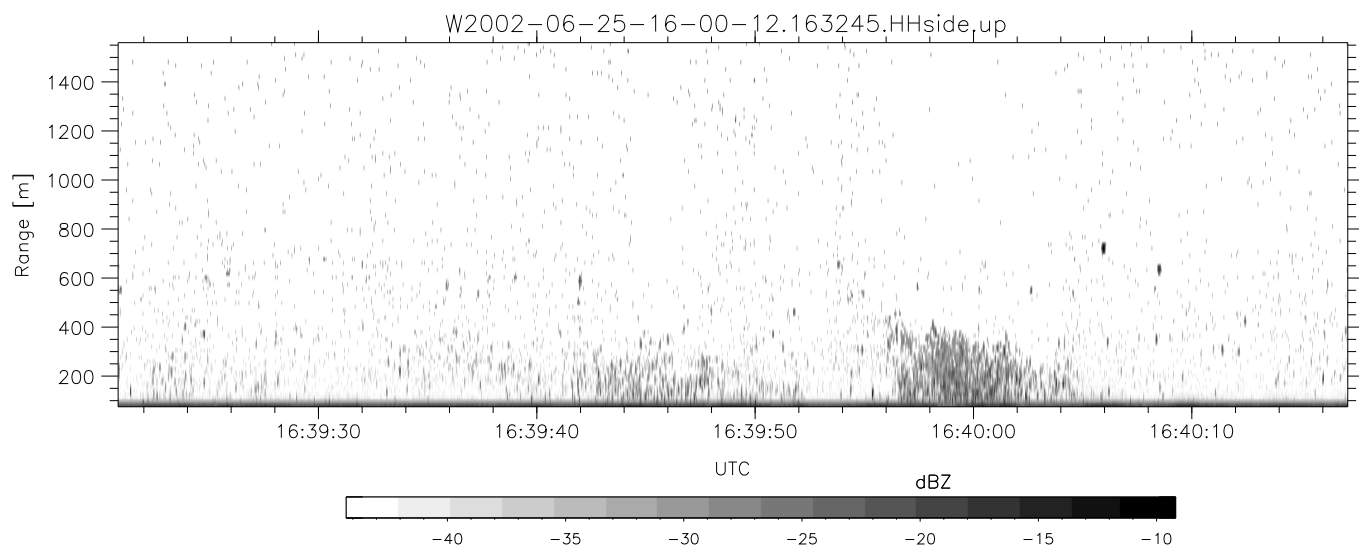
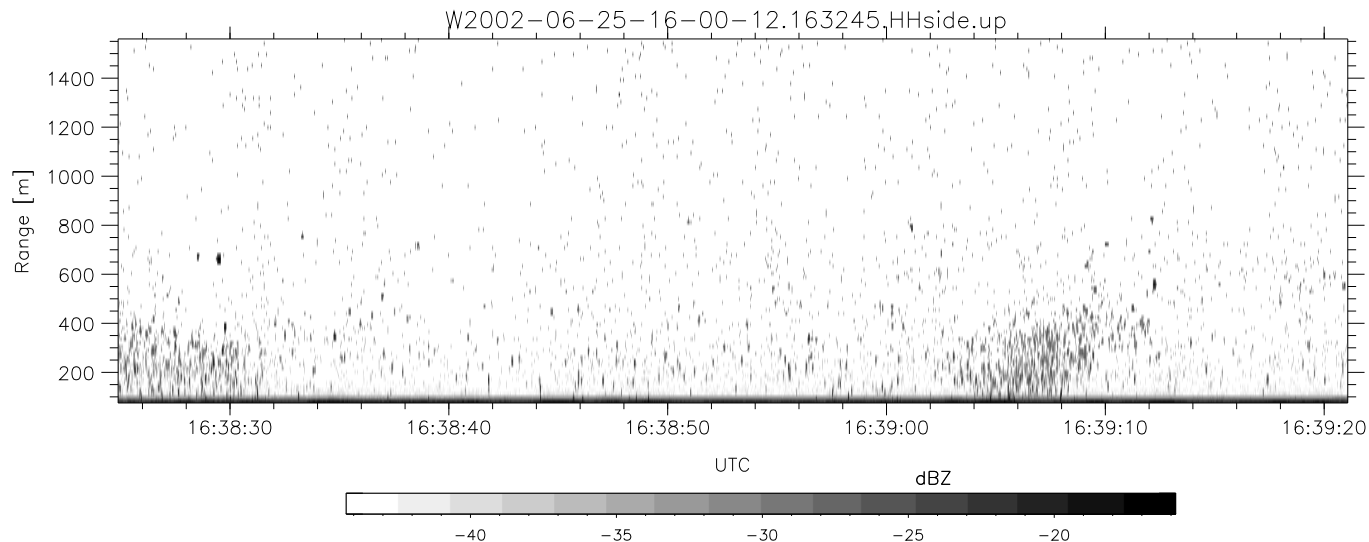
W2002-06-25-16-00-12 - PPMAG4
 IRIG:1,UTC: 15:59:56.81 to 16:48:59.59, Dur: 2943s
 TimeLngth: 2942.78s, TimeInt: 28ms (34.6pps)
 TimeCor=-13.0s, DSPDif(mn,min,mx):29,28,316
 PPS(min,max,std): 22,36,2.52
 Prof: 1838 to 103691, NumProf(t/r): 101853/17069
 ProcTime/Recs: 16:32:45-16:41:02/68276-85344
 MxACQtime: 33ms; DRate: 193.7KB/s; Flags: 0, 0, 0
 Pulse: 275ns, IFfilt: 5.0MHz; ppPol: HH HV VV
 TxPol: HHVV, PRF: 20 10 20 10 kHz
 Range: Delay 75m, Spacing 15m, Gates 100
 Ave. Pulses: 84, Rng/Prof Aspect@90m/s: 5.8

	Min	Max	Mean	Std	Varc%
hhN(dB)	-68.05	-64.71	-66.32	-76.33	10.0
vvN(dB)	-66.98	-63.57	-65.27	-75.14	10.3
hhL(dB)	-13.60	-5.27	-8.89	-14.07	30.3
vvL(dB)	-10.12	-1.71	-6.17	-10.73	35.0
ppN(m/s)	-12.26	12.18	-0.05	4.12	
ppT(m/s)	-96.89	96.22	-0.36	32.57	
hh/vv(dB)	-NaN	47.74	12.75	29.65	4893
vh/hh(dB)	-NaN	-0.10	-5.64	-4.54	128.
hv/vv(dB)	-NaN	-18.69	-46.20	-40.27	391.
hnjmp(dB)	-2.40	2.89	-0.09	-8.63	14.0
vnjmp(dB)	-2.34	2.17	-0.09	-8.59	14.1



IHOP 2002 (dual-antenna config, modes 1,3,4,7) Data (cal: 49.0,50.0)

W2002-06-25-16-00-12 - PPMAG4						
IRIG:1,UTC: 15:59:56.81 to 16:48:59.59, Dur: 2943s	hhN (dB)	Min	Max	Mean	Std	Varc%
TimeLngth: 2942.78s, TimeInt: 28ms (34.6pps)	vvN (dB)	-68.05	-64.71	-66.32	-76.33	10.0
TimeCor=-13.0s, DSPDif(mn,min,mx):29,28,316	hhL (dB)	-66.98	-63.57	-65.27	-75.14	10.3
PPS(min,max,std): 22,36,2.52	vvL (dB)	-13.60	-5.27	-8.89	-14.07	30.3
Prof: 1838 to 103691, NumProf(t/r): 101853/17069	ppN (m/s)	-10.12	-1.71	-6.17	-10.73	35.0
ProcTime/Recs: 16:32:45-16:41:02/68276-85344	ppT (m/s)	-12.26	12.18	-0.05	4.12	
MxACQtime: 33ms; DRate: 193.7KB/s; Flags: 0, 0, 0	hh/vv (dB)	-96.89	96.22	-0.36	32.57	
Pulse: 275ns, IFfilt: 5.0MHz; ppPol: HH HV VV	vh/vh (dB)	-NaN	47.74	12.75	29.65	4893
TxPol: HHVV, PRF: 20 10 20 10 kHz	hv/hv (dB)	-NaN	-0.10	-5.64	-4.54	128.
Range: Delay 75m, Spacing 15m, Gates 100	hn/vv (dB)	-NaN	-18.69	-46.20	-40.27	391.
Ave. Pulses: 84, Rng/Prof Aspect@90m/s: 5.8	hn/jmp (dB)	-2.40	2.89	-0.09	-8.63	14.0
	vn/jmp (dB)	-2.34	2.17	-0.09	-8.59	14.1



IHOP 2002 (dual-antenna config, modes 1,3,4,7) Data (cal: 49.0,50.0)

W2002-06-25-16-00-12 - PPMAG4

	Min	Max	Mean	Std	Varc%
IRIG:1,UTC: 15:59:56.81 to 16:48:59.59, Dur: 2943s	-68.05	-64.71	-66.32	-76.33	10.0
TimeLngth: 2942.78s, TimeInt: 28ms (34.6pps)	-66.98	-63.57	-65.27	-75.14	10.3
TimeCor=-13.0s, DSPDif(mn,min,mx):29,28,316	-13.60	-5.27	-8.89	-14.07	30.3
PPS(min,max,std): 22,36,2.52	-10.12	-1.71	-6.17	-10.73	35.0
Prof: 1838 to 103691, NumProf(t/r): 101853/17069	ppN(m/s)	-12.26	12.18	-0.05	4.12
ProcTime/Recs: 16:32:45-16:41:02/68276-85344	ppT(m/s)	-96.89	96.22	-0.36	32.57
MxACQtime: 33ms; DRate: 193.7KB/s; Flags: 0, 0, 0	hh/vv(dB)	-NaN	47.74	12.75	29.65 4893
Pulse: 275ns, IFfilt: 5.0MHz; ppPol: HH HV VV	vh/hh(dB)	-NaN	-0.10	-5.64	-4.54 128.
TxPol: HHVV, PRF: 20 10 20 10 kHz	hv/vv(dB)	-NaN	-18.69	-46.20	-40.27 391.
Range: Delay 75m, Spacing 15m, Gates 100	hnjmp(dB)	-2.40	2.89	-0.09	-8.63 14.0
Ave. Pulses: 84, Rng/Prof Aspect@90m/s: 5.8	vnjmp(dB)	-2.34	2.17	-0.09	-8.59 14.1