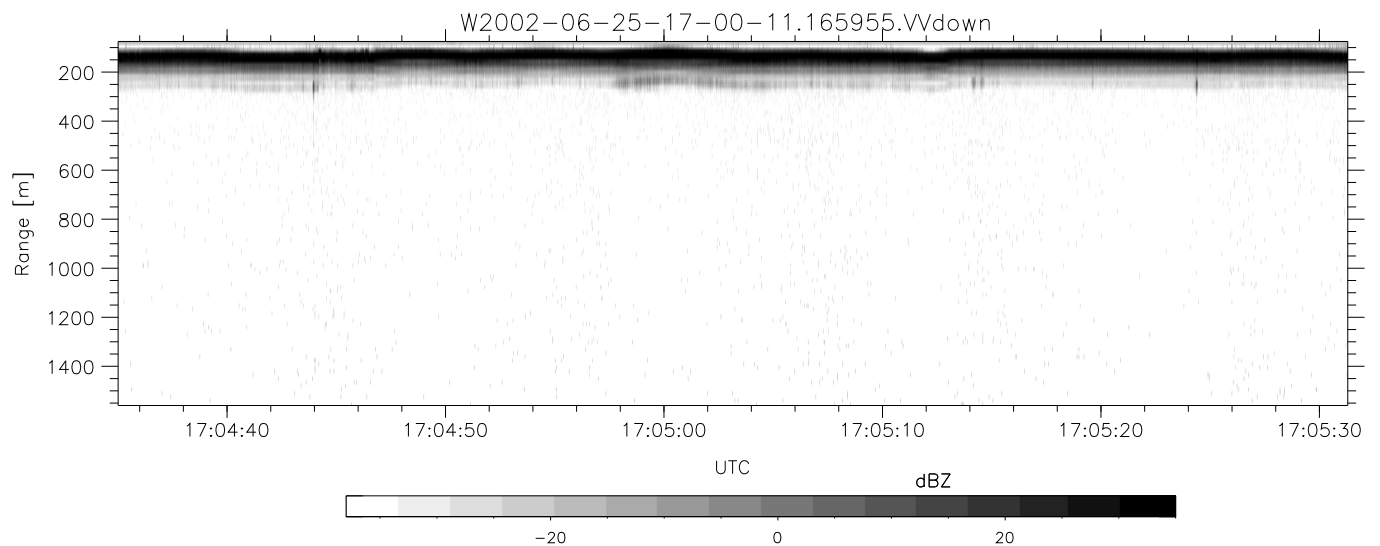
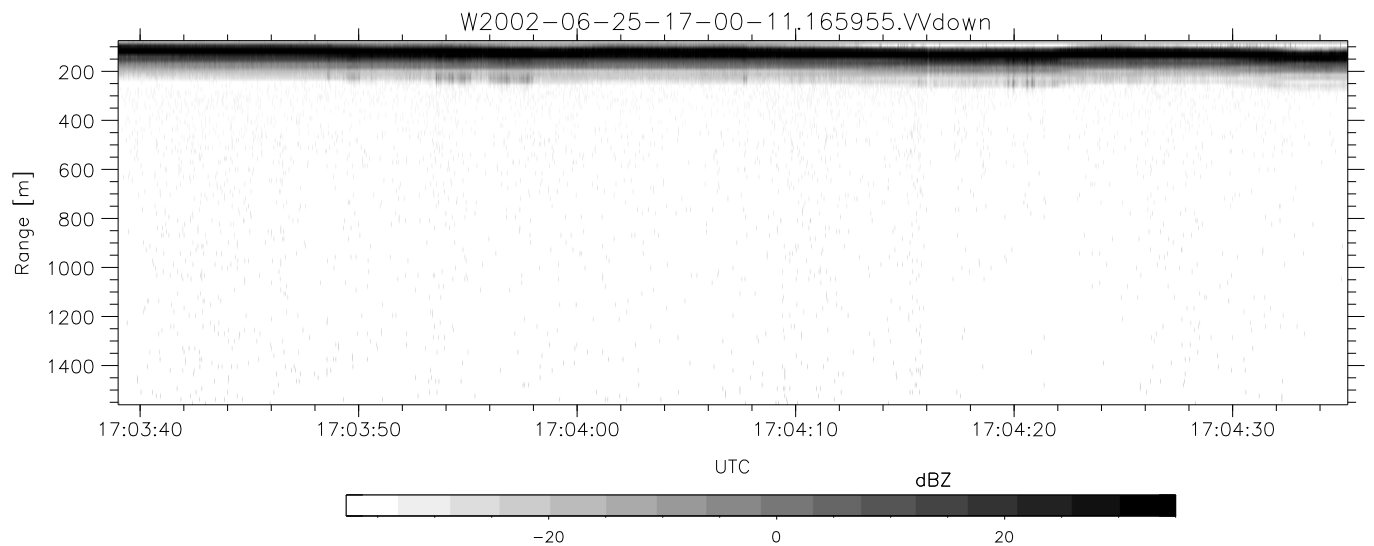
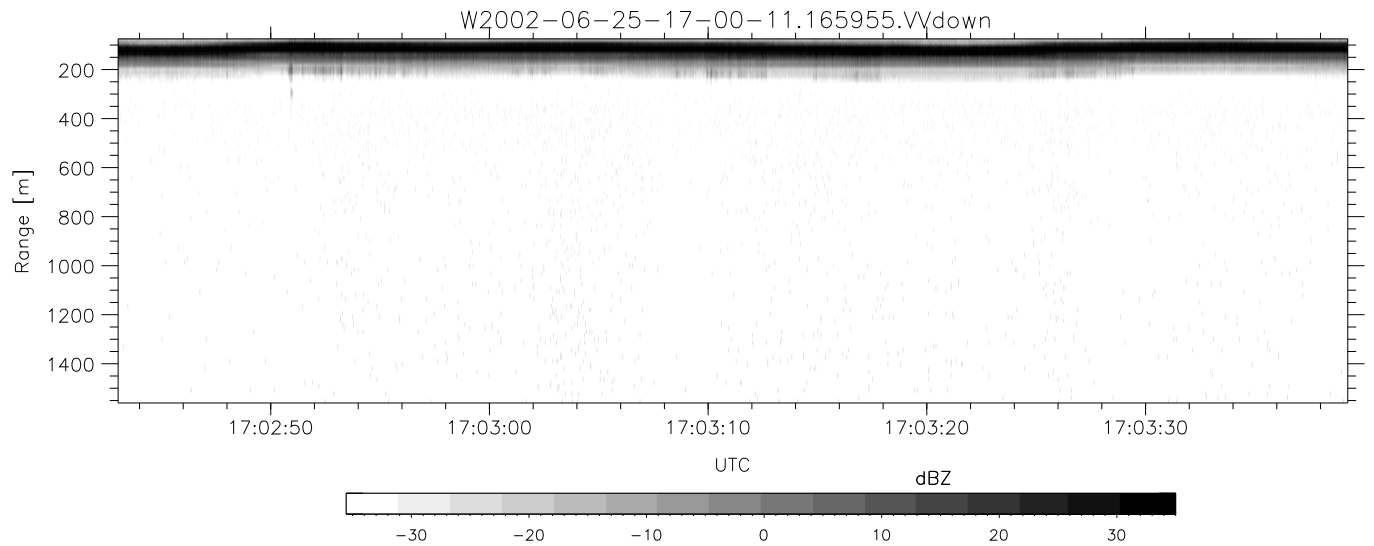


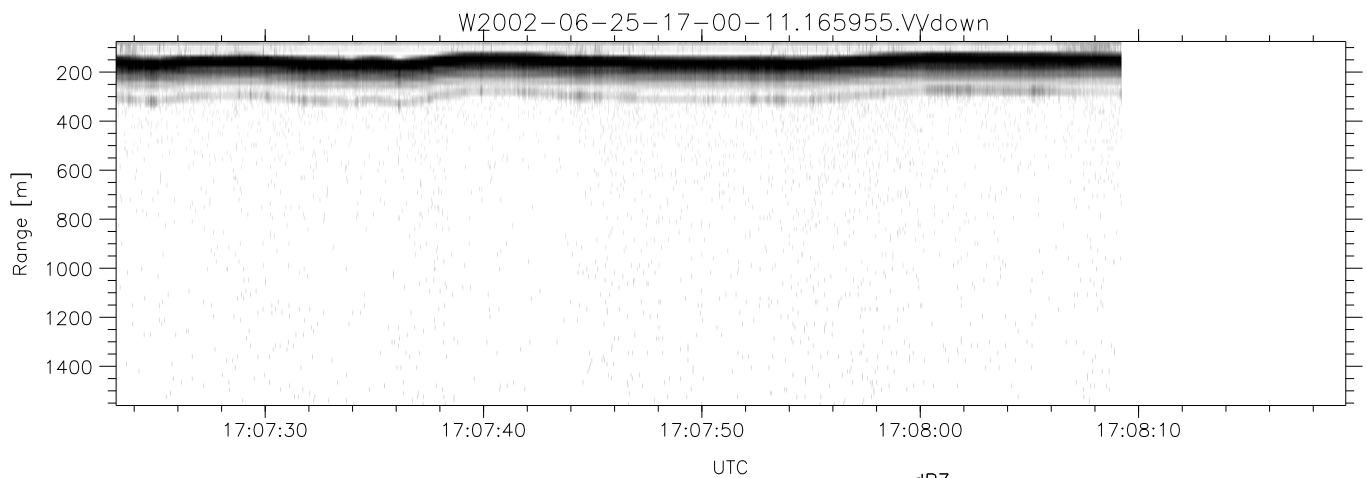
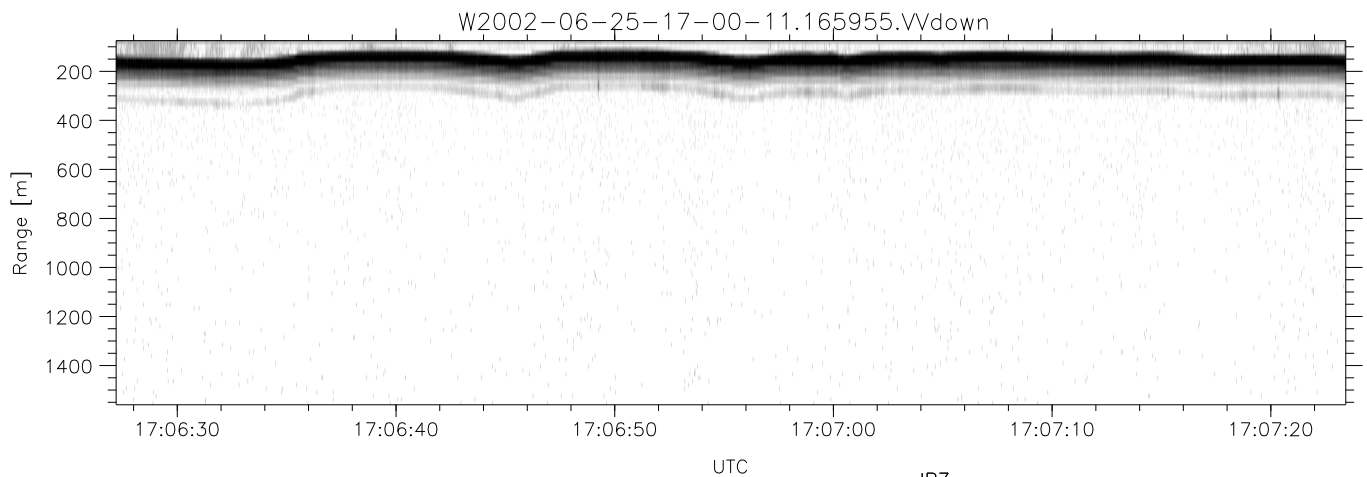
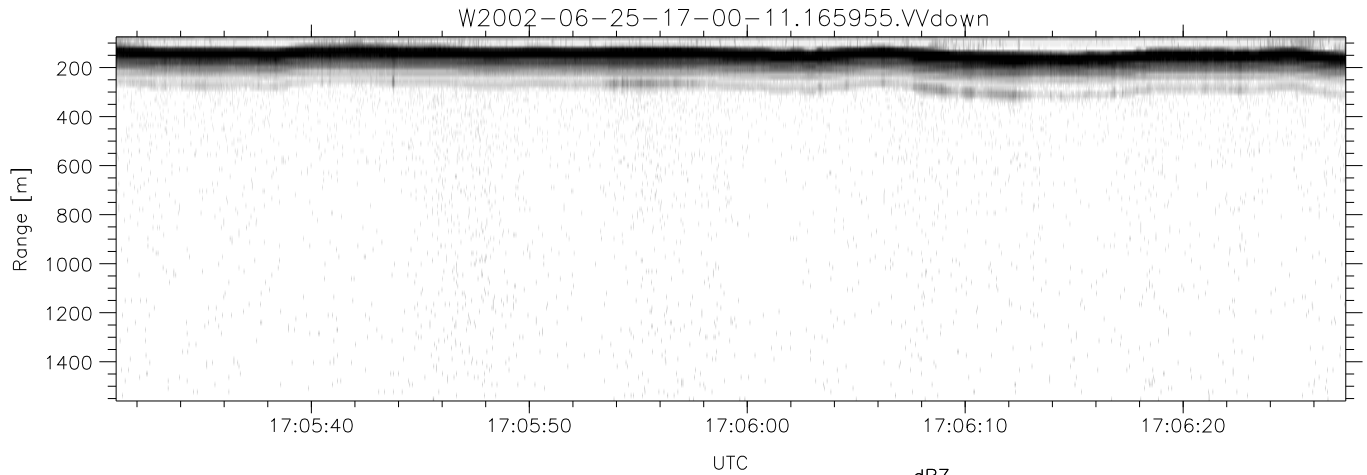
IHOP 2002 (dual-antenna config, modes 1,3,4,7) Data (cal: 49.0,50.0)

W2002-06-25-17-00-11 - PPMAG4	Min	Max	Mean	Std	Varc%	
IRIG:1,UTC: 16:59:55.32 to 17:08:58.27, Dur: 543s	hhN(dB)	-68.34	-64.87	-66.47	-76.46	10.0
TimeLngth: 542.94s, TimeInt: 28ms (34.6pps)	vvN(dB)	-67.14	-63.49	-65.42	-75.27	10.4
TimeCor=-13.0s, DSPDif(mn,min,mx):28,28,399	hhL(dB)	-15.12	-6.60	-9.41	-17.46	15.7
PPS(min,max,std): 18,36,2.27	vvL(dB)	-9.62	-3.41	-6.93	-12.32	28.9
Prof: 21 to 18783, NumProf(t/r): 18762/17069	ppN(m/s)	-12.69	12.52	0.02	4.12	
ProcTime/Recs: 16:59:55-17:08:09/0-17068	ppT(m/s)	-100.2	98.95	0.14	32.53	
MxACQtime: 33ms; DRate: 193.4KB/s; Flags: 0, 0, 0	hh/vv(dB)	-NaN	39.51	2.29	25.72	2199
Pulse: 275ns, IFilt: 5.0MHz; ppPol: HH HV VV	vh/hh(dB)	-36.50	1.77	-6.49	-4.18	169.
TxPol: HHVV, PRF: 20 10 20 10 kHz	hv/vv(dB)	-NaN	-28.03	-47.40	-43.70	234.
Range: Delay 75m, Spacing 15m, Gates 100	hnjmp(dB)	-2.10	2.46	0.19	-8.35	14.0
Ave. Pulses: 84, Rng/Prof Aspect@90m/s: 5.8	vnjmp(dB)	-2.28	2.70	0.18	-8.24	14.4



IHOP 2002 (dual-antenna config, modes 1,3,4,7) Data (cal: 49.0,50.0)

W2002-06-25-17-00-11 - PPMAG4	Min	Max	Mean	Std	Varc%	
IRIG:1,UTC: 16:59:55.32 to 17:08:58.27, Dur: 543s	hhN(dB)	-68.34	-64.87	-66.47	-76.46	10.0
TimeLngth: 542.94s, TimeInt: 28ms (34.6pps)	vvN(dB)	-67.14	-63.49	-65.42	-75.27	10.4
TimeCor=-13.0s, DSPDif(mn,min,mx):28,28,399	hhL(dB)	-15.12	-6.60	-9.41	-17.46	15.7
PPS(min,max,std): 18,36,2.27	vvL(dB)	-9.62	-3.41	-6.93	-12.32	28.9
Prof: 21 to 18783, NumProf(t/r): 18762/17069	ppN(m/s)	-12.69	12.52	0.02	4.12	
ProcTime/Recs: 16:59:55-17:08:09/0-17068	ppT(m/s)	-100.2	98.95	0.14	32.53	
MxACQtime: 33ms; DRate: 193.4KB/s; Flags: 0, 0, 0	hh/vv(dB)	-NaN	39.51	2.29	25.72	2199
Pulse: 275ns, IFilt: 5.0MHz; ppPol: HH HV VV	vh/hh(dB)	-36.50	1.77	-6.49	-4.18	169.
TxPol: HHVV, PRF: 20 10 20 10 kHz	hv/vv(dB)	-NaN	-28.03	-47.40	-43.70	234.
Range: Delay 75m, Spacing 15m, Gates 100	hnjmp(dB)	-2.10	2.46	0.19	-8.35	14.0
Ave. Pulses: 84, Rng/Prof Aspect@90m/s: 5.8	vnjmp(dB)	-2.28	2.70	0.18	-8.24	14.4



IHOP 2002 (dual-antenna config, modes 1,3,4,7) Data (cal: 49.0,50.0)

W2002-06-25-17-00-11 - PPMAG4
 IRIG:1,UTC: 16:59:55.32 to 17:08:58.27, Dur: 543s
 TimeLngth: 542.94s, TimeInt: 28ms (34.6pps)
 TimeCor=-13.0s, DSPDif(mn,min,mx):28,28,399
 PPS(min,max,std): 18,36,2.27
 Prof: 21 to 18783, NumProf(t/r): 18762/17069
 ProcTime/Recs: 16:59:55-17:08:09/0-17068
 MxACQtime: 33ms; DRate: 193.4KB/s; Flags: 0, 0, 0
 Pulse: 275ns, IFfilt: 5.0MHz; ppPol: HH HV VV
 TxPol: HHVV, PRF: 20 10 20 10 kHz
 Range: Delay 75m, Spacing 15m, Gates 100
 Ave. Pulses: 84, Rng/Prof Aspect@90m/s: 5.8

	Min	Max	Mean	Std	Varc%
hhN(dB)	-68.34	-64.87	-66.47	-76.46	10.0
vvN(dB)	-67.14	-63.49	-65.42	-75.27	10.4
hhL(dB)	-15.12	-6.60	-9.41	-17.46	15.7
vvL(dB)	-9.62	-3.41	-6.93	-12.32	28.9
ppN(m/s)	-12.69	12.52	0.02	4.12	
ppT(m/s)	-100.2	98.95	0.14	32.53	
hh/vv(dB)	-NaN	39.51	2.29	25.72	2199
vh/hh(dB)	-36.50	1.77	-6.49	-4.18	169.
hv/vv(dB)	-NaN	-28.03	-47.40	-43.70	234.
hnjmp(dB)	-2.10	2.46	0.19	-8.35	14.0
vnjmp(dB)	-2.28	2.70	0.18	-8.24	14.4