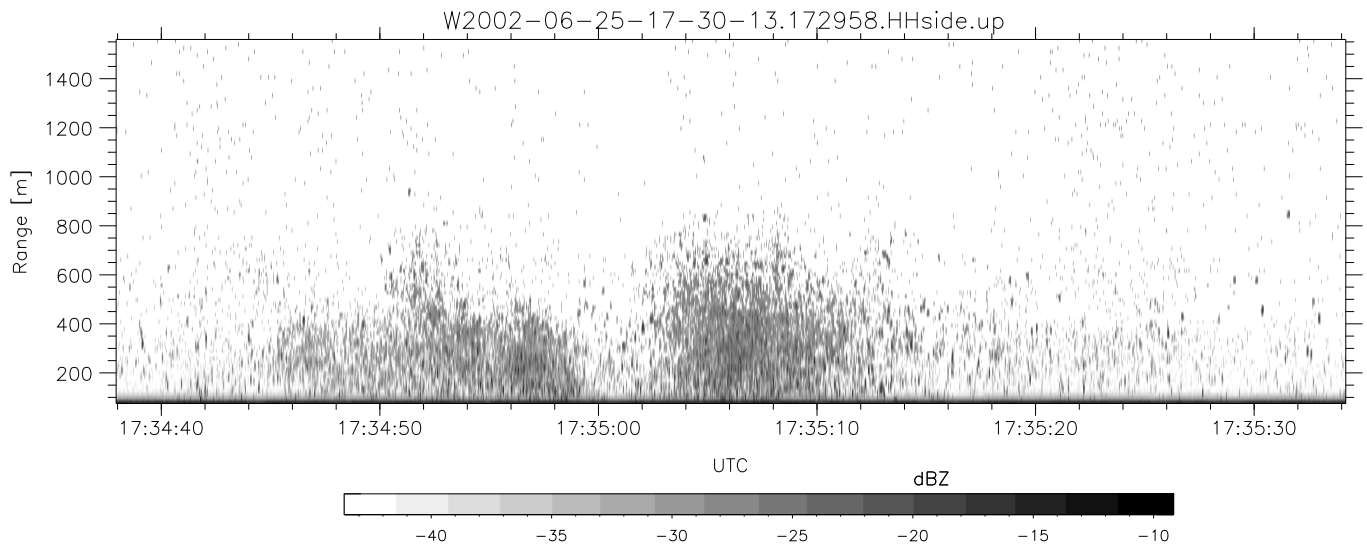
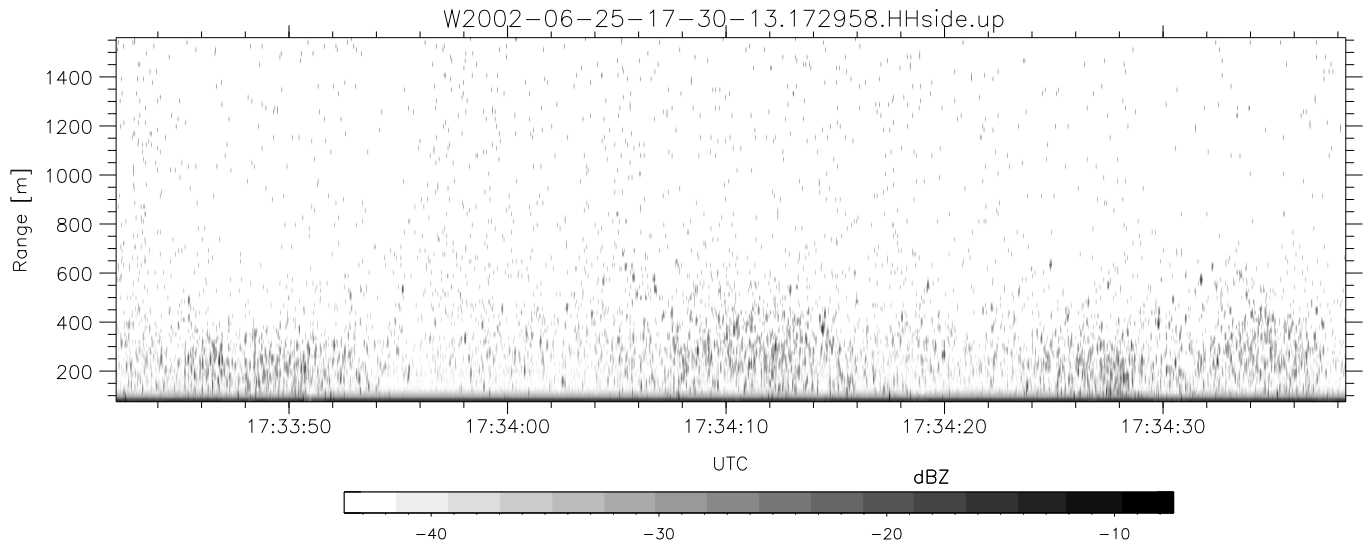
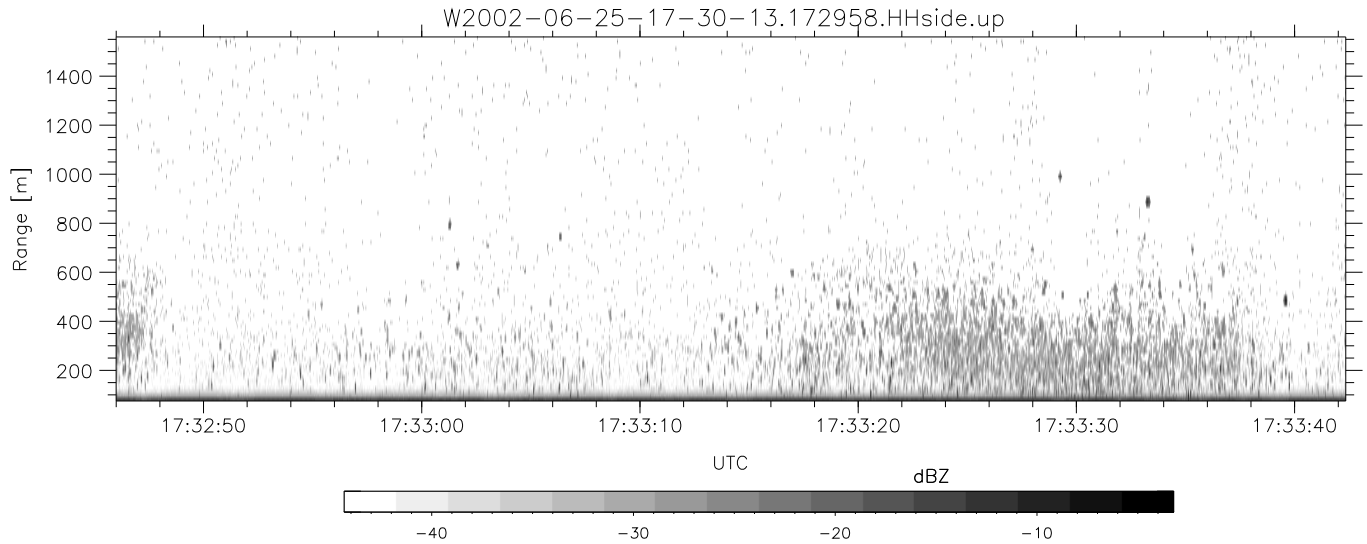


IHOP 2002 (dual-antenna config, modes 1,3,4,7) Data (cal: 49.0,50.0)

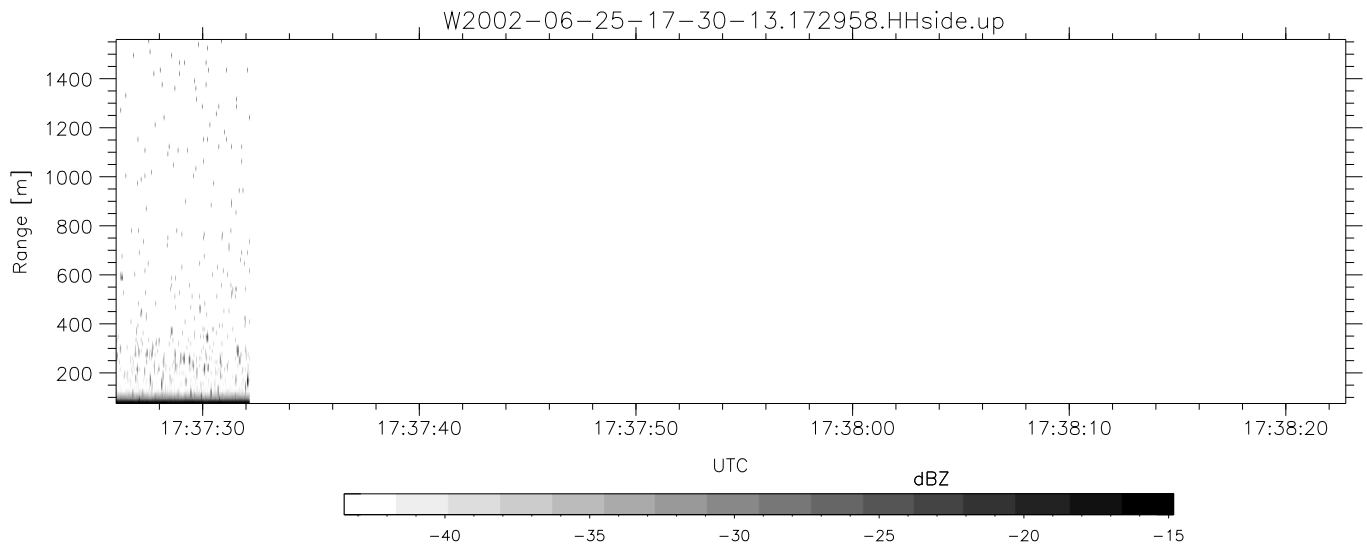
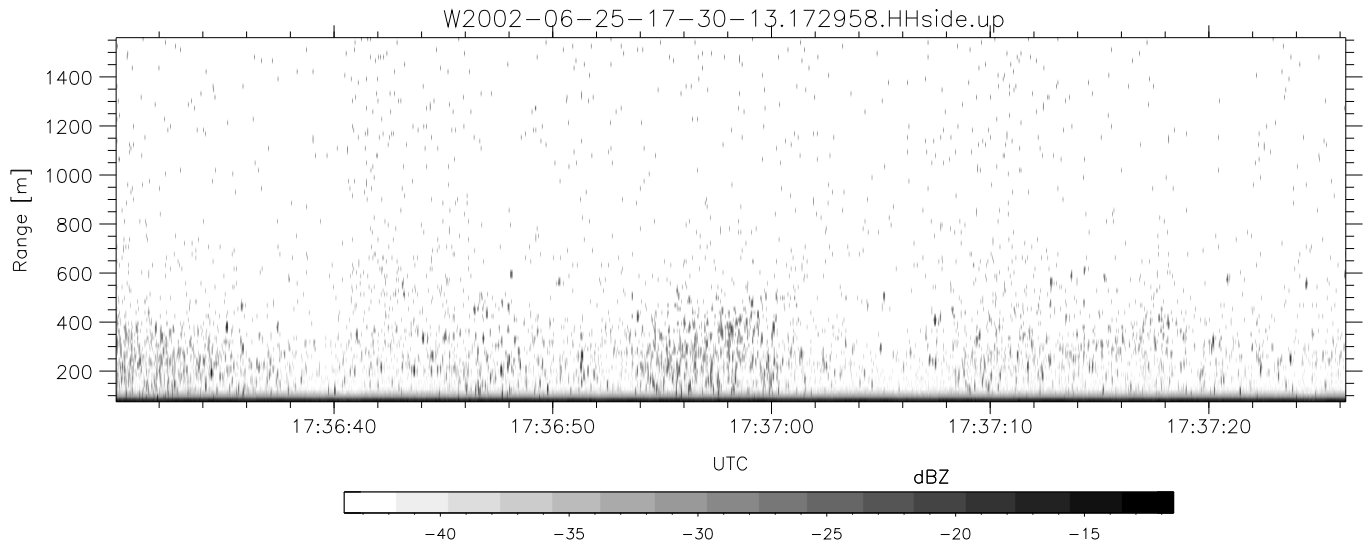
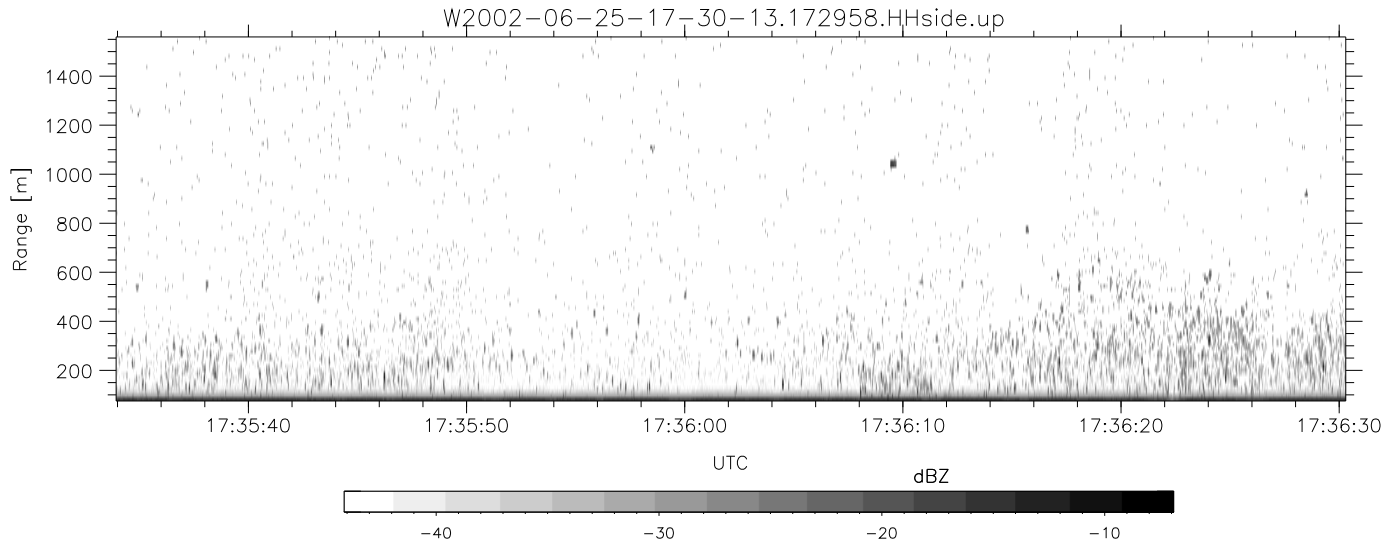
	Min	Max	Mean	Std	Varc%	
W2002-06-25-17-30-13 - PPMAG4						
IRIG:1,UTC: 17:29:58.18 to 17:37:32.15, Dur: 454s	hhN(dB)	-68.30	-64.53	-66.67	-76.59	10.2
TimeLngth: 453.97s, TimeInt: 29ms (34.3pps)	vvN(dB)	-67.18	-63.49	-65.56	-75.41	10.4
TimeCor=-13.0s, DSPDif(mn,min,mx):29,28,315	hhL(dB)	-12.97	-5.03	-6.56	-15.21	13.7
PPS(min,max,std): 23,36,2.29	vvL(dB)	-10.80	-2.33	-6.33	-11.37	31.4
Prof: 226 to 15811, NumProf(t/r): 15585/15585	ppN(m/s)	-12.23	12.64	-0.01	4.10	
MxACQtime: 33ms; DRate: 192.2KB/s; Flags: 0, 0, 0	ppT(m/s)	-96.59	99.83	-0.06	32.41	
Pulse: 275ns, IFfilt: 5.0MHz; ppPol: HH HV VW	hh/vv(dB)	-NaN	46.25	17.53	31.26	2359
TxPol: HHVV, PRF: 20 10 20 10 kHz	vh/hh(dB)	-50.05	-32.04	-35.37	-36.59	75.5
Range: Delay 75m, Spacing 15m, Gates 100	hv/vv(dB)	-NaN	-34.96	-55.76	-48.10	584.
Ave. Pulses: 84, Rng/Prof Aspect@90m/s: 5.7	hn_jmp(dB)	-2.33	1.95	-0.08	-8.58	14.1
	vn_jmp(dB)	-2.39	2.25	-0.09	-8.54	14.3



IHOP 2002 (dual-antenna config, modes 1,3,4,7) Data (cal: 49.0,50.0)

W2002-06-25-17-30-13 - PPMAG4  
 IRIG:1,UTC: 17:29:58.18 to 17:37:32.15, Dur: 454s  
 TimeLngth: 453.97s, TimeInt: 29ms (34.3pps)  
 TimeCor=-13.0s, DSPDif(mn,min,mx):29,28,315  
 PPS(min,max,std): 23,36,2.29  
 Prof: 226 to 15811, NumProf(t/r): 15585/15585  
 MxACQtime: 33ms; DRate: 192.2KB/s; Flags: 0, 0, 0  
 Pulse: 275ns, IFfilt: 5.0MHz; ppPol: HH HV VV  
 TxPol: HHVV, PRF: 20 10 20 10 kHz  
 Range: Delay 75m, Spacing 15m, Gates 100  
 Ave. Pulses: 84, Rng/Prof Aspect@90m/s: 5.7

	Min	Max	Mean	Std	Varc%
hhN(dB)	-68.30	-64.53	-66.67	-76.59	10.2
vvN(dB)	-67.18	-63.49	-65.56	-75.41	10.4
hhL(dB)	-12.97	-5.03	-6.56	-15.21	13.7
vvL(dB)	-10.80	-2.33	-6.33	-11.37	31.4
ppN(m/s)	-12.23	12.64	-0.01	4.10	
ppT(m/s)	-96.59	99.83	-0.06	32.41	
hh/vv(dB)	-NaN	46.25	17.53	31.26	2359
vh/hh(dB)	-50.05	-32.04	-35.37	-36.59	75.5
hv/vv(dB)	-NaN	-34.96	-55.76	-48.10	584.
hn_jmp(dB)	-2.33	1.95	-0.08	-8.58	14.1
vn_jmp(dB)	-2.39	2.25	-0.09	-8.54	14.3



IHOP 2002 (dual-antenna config, modes 1,3,4,7) Data (cal: 49.0,50.0)

	Min	Max	Mean	Std	Varc%	
W2002-06-25-17-30-13 - PPMAG4						
IRIG:1,UTC: 17:29:58.18 to 17:37:32.15, Dur: 454s	hhN (dB)	-68.30	-64.53	-66.67	-76.59	10.2
TimeLngth: 453.97s, TimeInt: 29ms (34.3pps)	vvN (dB)	-67.18	-63.49	-65.56	-75.41	10.4
TimeCor=-13.0s, DSPDif(mn,min,mx):29,28,315	hhL (dB)	-12.97	-5.03	-6.56	-15.21	13.7
PPS(min,max,std): 23,36,2.29	vvL (dB)	-10.80	-2.33	-6.33	-11.37	31.4
Prof: 226 to 15811, NumProf(t/r): 15585/15585	ppN (m/s)	-12.23	12.64	-0.01	4.10	
MxACQtime: 33ms; DRate: 192.2KB/s; Flags: 0, 0, 0	ppT (m/s)	-96.59	99.83	-0.06	32.41	
Pulse: 275ns, IFfilt: 5.0MHz; ppPol: HH HV VV	hh/vv (dB)	-NaN	46.25	17.53	31.26	2359
TxPol: HHVV, PRF: 20 10 20 10 kHz	vh/hh (dB)	-50.05	-32.04	-35.37	-36.59	75.5
Range: Delay 75m, Spacing 15m, Gates 100	hv/vv (dB)	-NaN	-34.96	-55.76	-48.10	584.
Ave. Pulses: 84, Rng/Prof Aspect@90m/s: 5.7	hn_jmp (dB)	-2.33	1.95	-0.08	-8.58	14.1
	vn_jmp (dB)	-2.39	2.25	-0.09	-8.54	14.3