

IHOP 2002 (dual-antenna config, modes 1,3,4,7) Data (cal: 49.0,50.0)

W2002-06-25-17-30-13 - PPMAG4

IRIG:1,UTC: 17:29:58.18 to 17:37:32.15, Dur: 454s

TimeLngth: 453.97s, TimeInt: 29ms (34.3pps)

TimeCor=-13.0s, DSPDif(mn,min,mx):29,28,315

PPS(min,max,std): 23,36,2.29

Prof: 226 to 15811, NumProf(t/r): 15585/15585

MxACQtime: 33ms; DRate: 192.2KB/s; Flags: 0, 0, 0

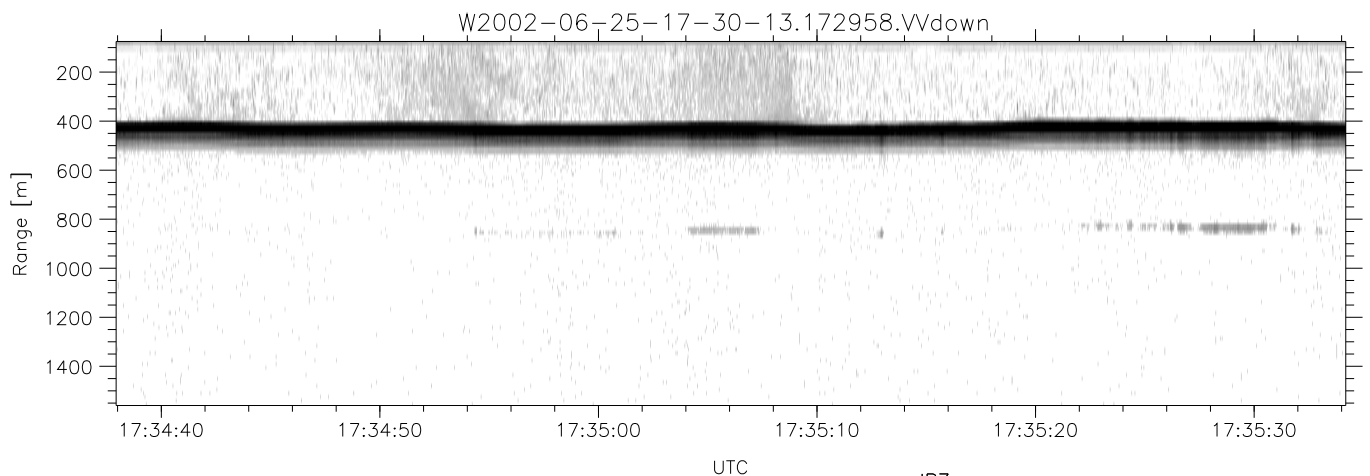
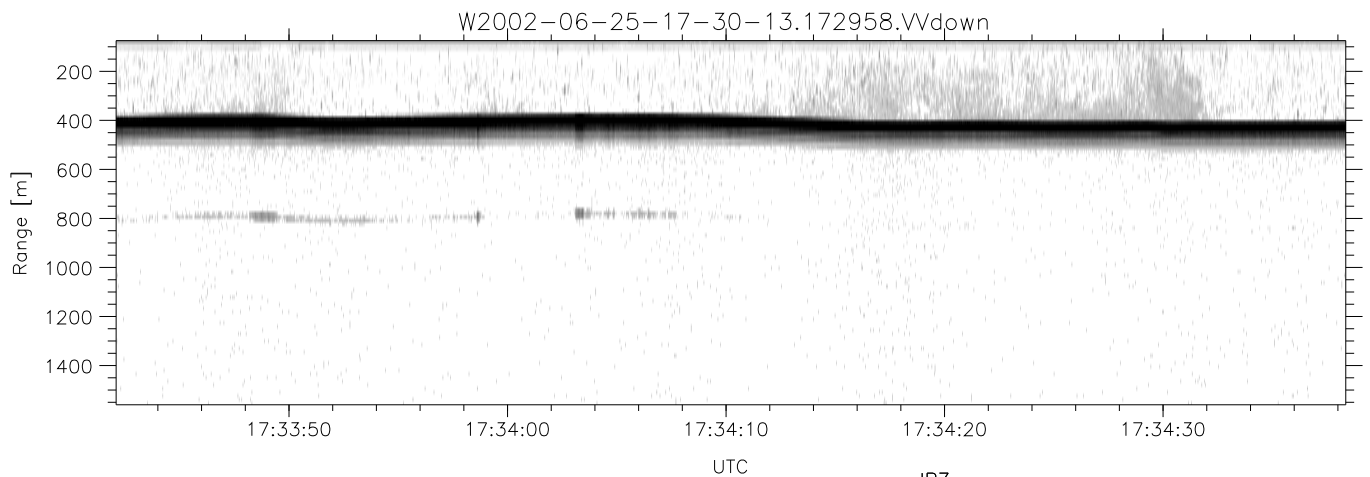
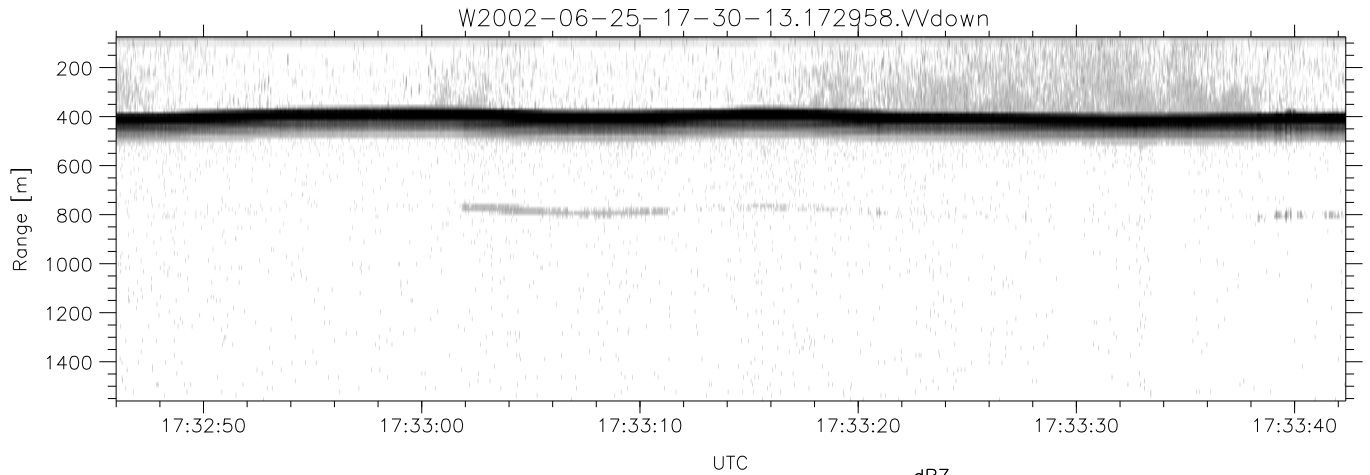
Pulse: 275ns, IFfilt: 5.0MHz; ppPol: HH HV VV

TxPol: HHVV, PRF: 20 10 20 10 kHz

Range: Delay 75m, Spacing 15m, Gates 100

Ave. Pulses: 84, Rng/Prof Aspect@90m/s: 5.7

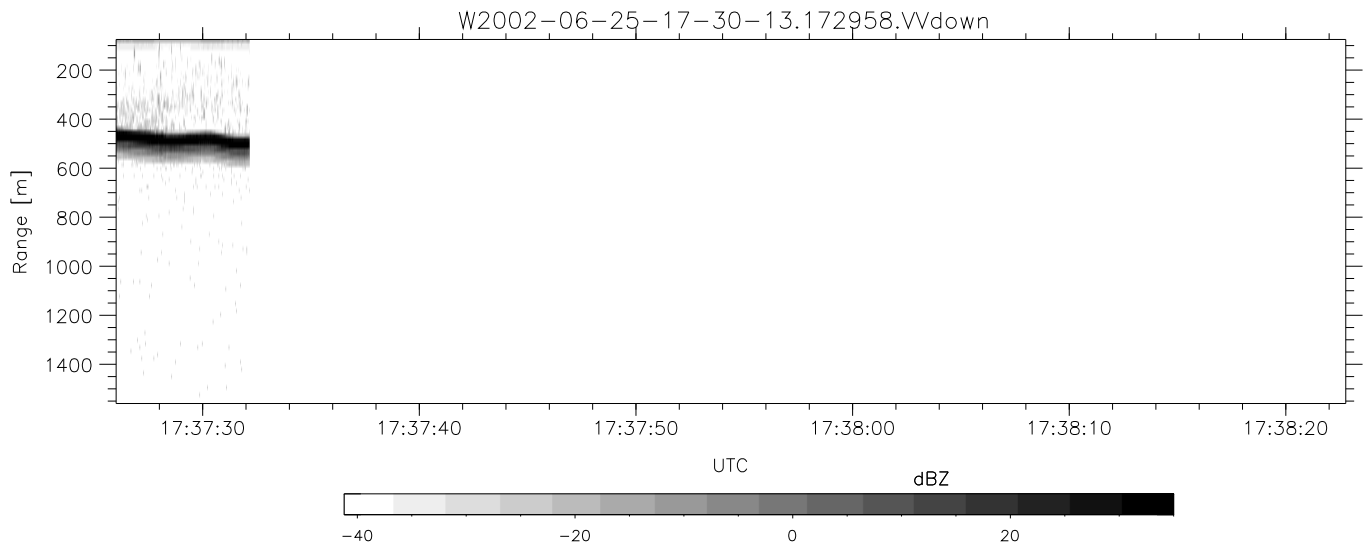
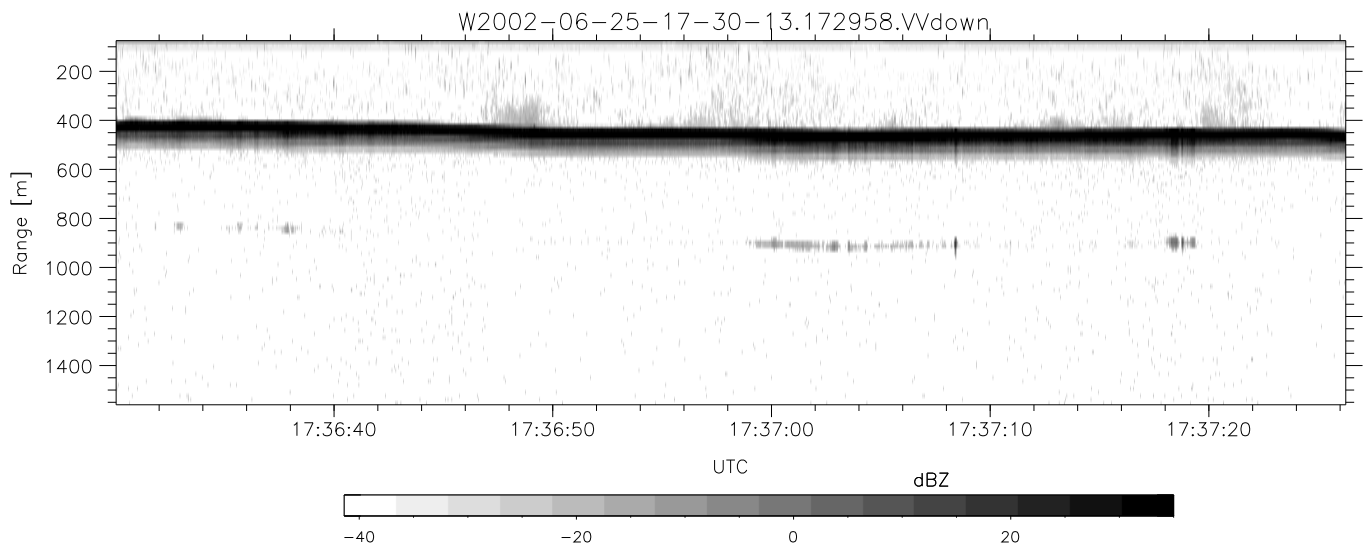
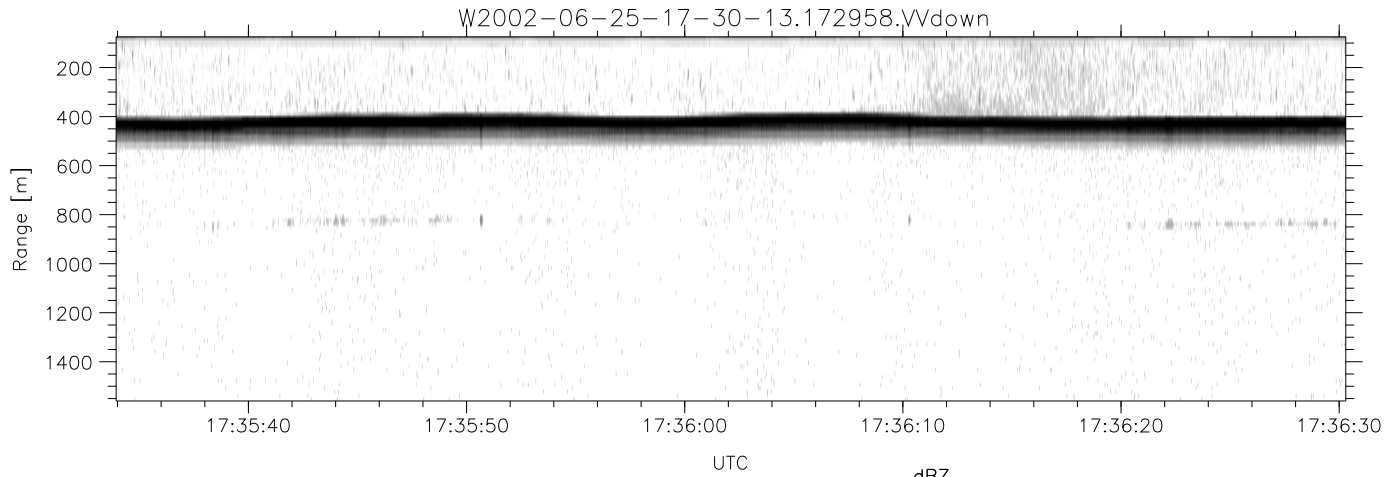
	Min	Max	Mean	Std	Varc%
hhN(dB)	-68.30	-64.53	-66.67	-76.59	10.2
vvN(dB)	-67.18	-63.49	-65.56	-75.41	10.4
hhL(dB)	-12.97	-5.03	-6.56	-15.21	13.7
vvL(dB)	-10.80	-2.33	-6.33	-11.37	31.4
ppN(m/s)	-12.23	12.64	-0.01	4.10	
ppT(m/s)	-96.59	99.83	-0.06	32.41	
hh/vv(dB)	-NaN	46.25	17.53	31.26	2359
vh/hh(dB)	-50.05	-32.04	-35.37	-36.59	75.5
hv/vv(dB)	-NaN	-34.96	-55.76	-48.10	584.
hn_jmp(dB)	-2.33	1.95	-0.08	-8.58	14.1
vn_jmp(dB)	-2.39	2.25	-0.09	-8.54	14.3



IHOP 2002 (dual-antenna config, modes 1,3,4,7) Data (cal: 49.0,50.0)

W2002-06-25-17-30-13 - PPMAG4
 IRIG:1,UTC: 17:29:58.18 to 17:37:32.15, Dur: 454s
 TimeLngth: 453.97s, TimeInt: 29ms (34.3pps)
 TimeCor=-13.0s, DSPDif(mn,min,mx):29,28,315
 PPS(min,max,std): 23,36,2.29
 Prof: 226 to 15811, NumProf(t/r): 15585/15585
 MxACQtime: 33ms; DRate: 192.2KB/s; Flags: 0, 0, 0
 Pulse: 275ns, IFfilt: 5.0MHz; ppPol: HH HV VV
 TxPol: HHVV, PRF: 20 10 20 10 kHz
 Range: Delay 75m, Spacing 15m, Gates 100
 Ave. Pulses: 84, Rng/Prof Aspect@90m/s: 5.7

	Min	Max	Mean	Std	Varc%
hhN(dB)	-68.30	-64.53	-66.67	-76.59	10.2
vvN(dB)	-67.18	-63.49	-65.56	-75.41	10.4
hhL(dB)	-12.97	-5.03	-6.56	-15.21	13.7
vvL(dB)	-10.80	-2.33	-6.33	-11.37	31.4
ppN(m/s)	-12.23	12.64	-0.01	4.10	
ppT(m/s)	-96.59	99.83	-0.06	32.41	
hh/vv(dB)	-NaN	46.25	17.53	31.26	2359
vh/hh(dB)	-50.05	-32.04	-35.37	-36.59	75.5
hv/vv(dB)	-NaN	-34.96	-55.76	-48.10	584.
hnjmp(dB)	-2.33	1.95	-0.08	-8.58	14.1
vnjmp(dB)	-2.39	2.25	-0.09	-8.54	14.3



IHOP 2002 (dual-antenna config, modes 1,3,4,7) Data (cal: 49.0,50.0)

W2002-06-25-17-30-13 - PPMAG4
 IRIG:1,UTC: 17:29:58.18 to 17:37:32.15, Dur: 454s
 TimeLngth: 453.97s, TimeInt: 29ms (34.3pps)
 TimeCor=-13.0s, DSPDif(mn,min,mx):29,28,315
 PPS(min,max,std): 23,36,2.29
 Prof: 226 to 15811, NumProf(t/r): 15585/15585
 MxACQtime: 33ms; DRate: 192.2KB/s; Flags: 0, 0, 0
 Pulse: 275ns, IFfilt: 5.0MHz; ppPol: HH HV VV
 TxPol: HHVV, PRF: 20 10 20 10 kHz
 Range: Delay 75m, Spacing 15m, Gates 100
 Ave. Pulses: 84, Rng/Prof Aspect@90m/s: 5.7

	Min	Max	Mean	Std	Varc%
hhN(dB)	-68.30	-64.53	-66.67	-76.59	10.2
vvN(dB)	-67.18	-63.49	-65.56	-75.41	10.4
hhL(dB)	-12.97	-5.03	-6.56	-15.21	13.7
vvL(dB)	-10.80	-2.33	-6.33	-11.37	31.4
ppN(m/s)	-12.23	12.64	-0.01	4.10	
ppT(m/s)	-96.59	99.83	-0.06	32.41	
hh/vv(dB)	-NaN	46.25	17.53	31.26	2359
vh/hh(dB)	-50.05	-32.04	-35.37	-36.59	75.5
hv/vv(dB)	-NaN	-34.96	-55.76	-48.10	584.
hnjmp(dB)	-2.33	1.95	-0.08	-8.58	14.1
vnjmp(dB)	-2.39	2.25	-0.09	-8.54	14.3