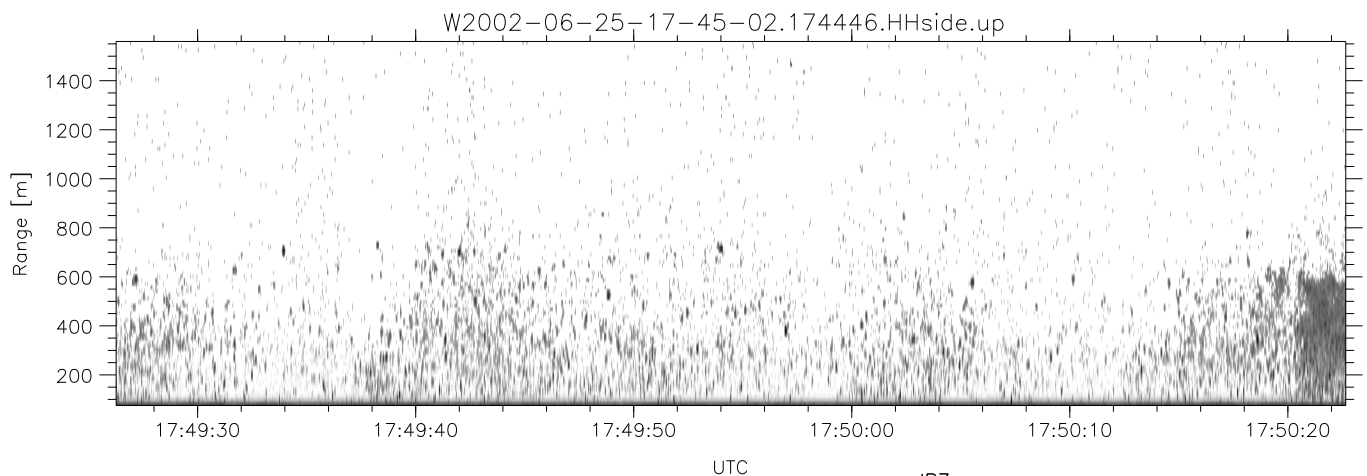
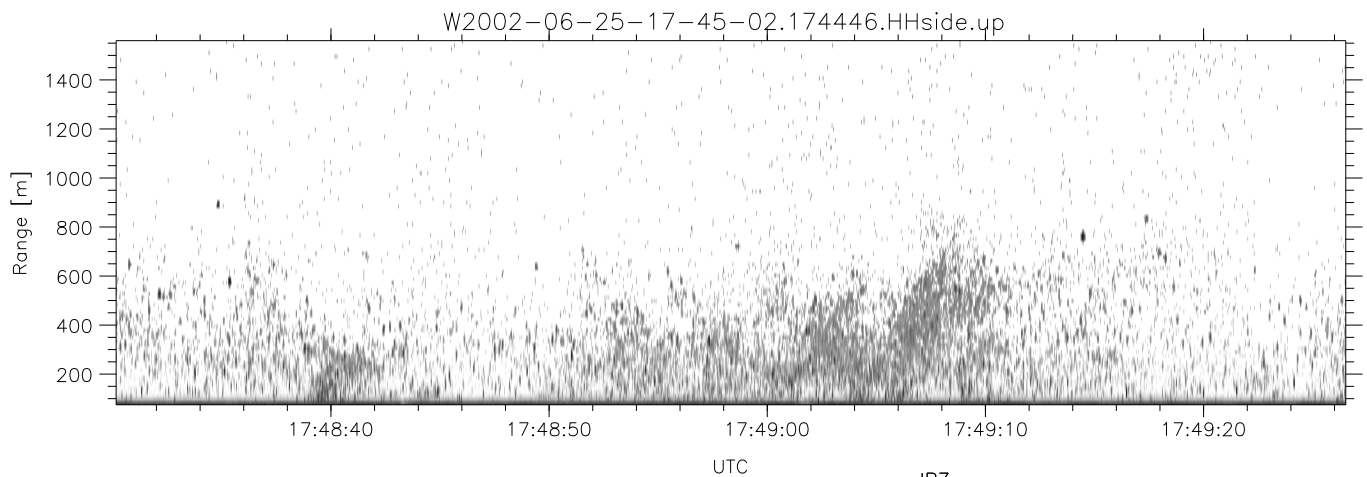
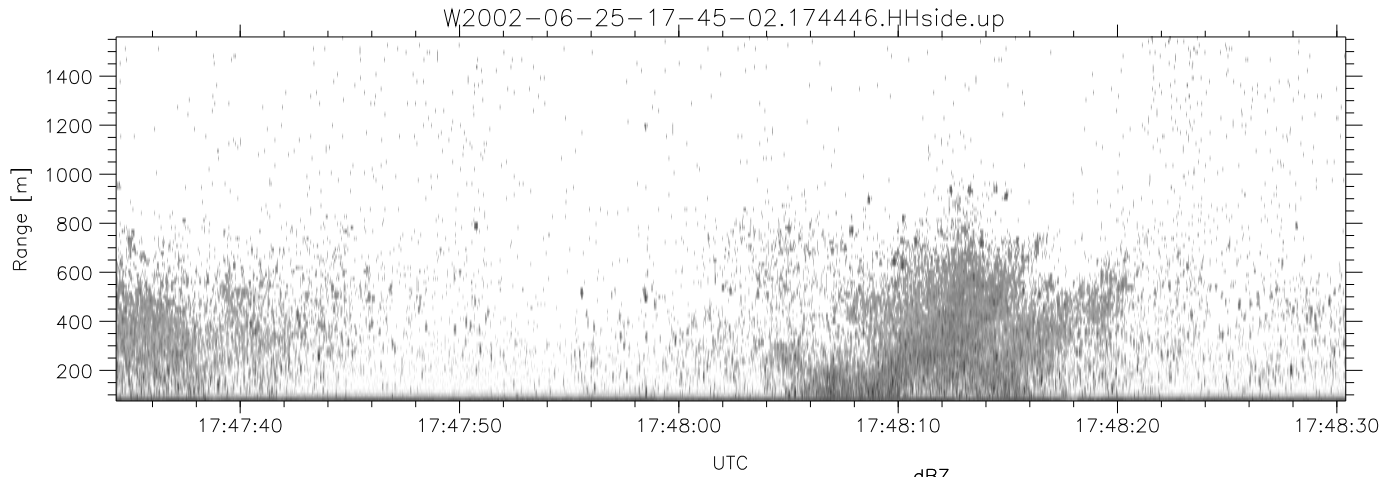


IHOP 2002 (dual-antenna config, modes 1,3,4,7) Data (cal: 49.0,50.0)

W2002-06-25-17-45-02 - PPMAG4
 IRIG:1,UTC: 17:44:46.68 to 17:53:12.12, Dur: 506s
 TimeLngth: 505.44s, TimeInt: 29ms (34.2pps)
 TimeCor=-13.0s, DSPDif(mn,min,mx):29,28,369
 PPS(min,max,std): 24,36,2.38
 Prof: 334 to 17599, NumProf(t/r): 17265/17265
 MxACQtime: 33ms; DRate: 191.2KB/s; Flags: 0, 0, 0
 Pulse: 275ns, IFfilt: 5.0MHz; ppPol: HH HV VV
 TxPol: HHVV, PRF: 20 10 20 10 kHz
 Range: Delay 75m, Spacing 15m, Gates 100
 Ave. Pulses: 84, Rng/Prof Aspect@90m/s: 5.7

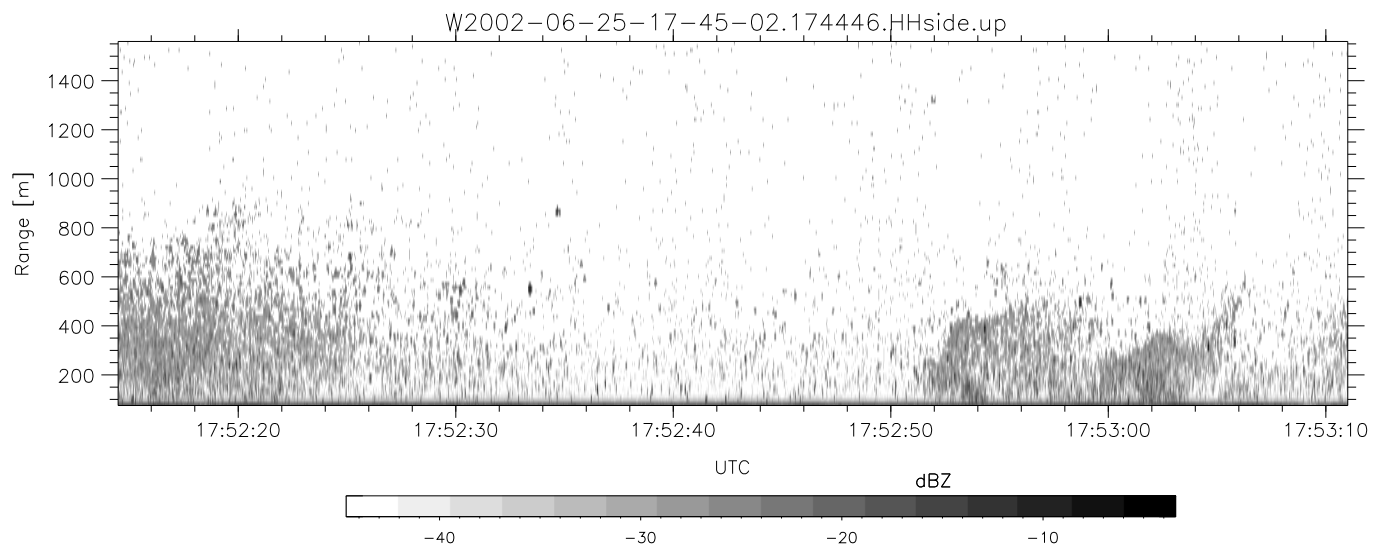
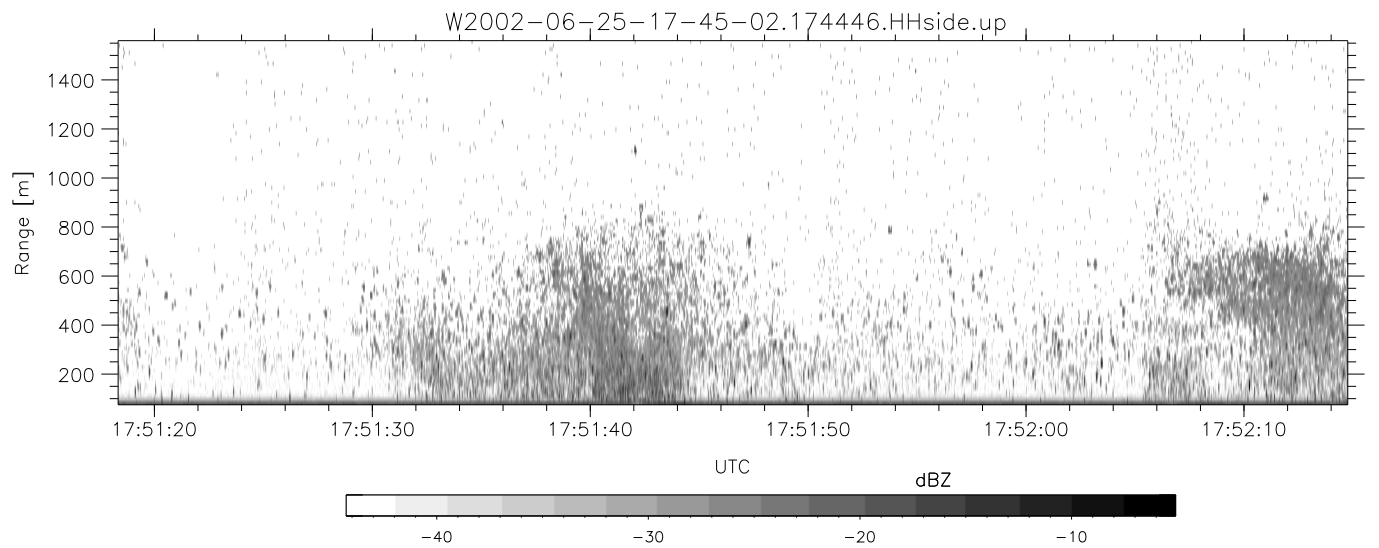
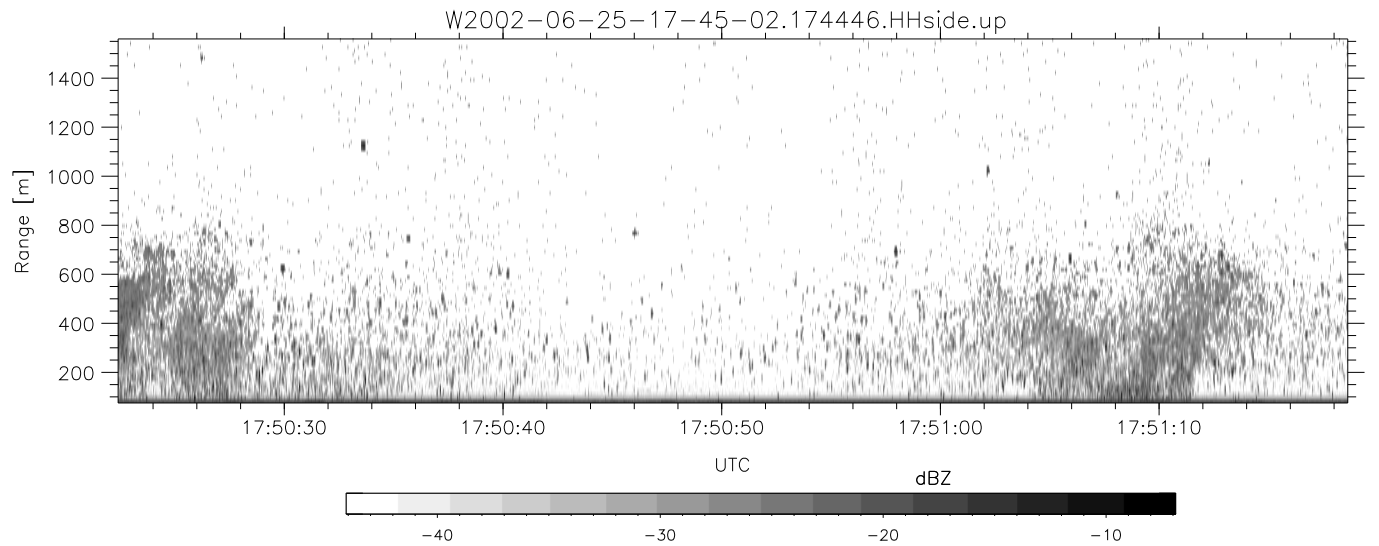
| | Min | Max | Mean | Std | Varc% |
|------------|--------|--------|--------|--------|-------|
| hhN(dB) | -68.50 | -65.13 | -66.70 | -76.66 | 10.1 |
| vvN(dB) | -68.14 | -64.11 | -65.68 | -75.62 | 10.2 |
| hhL(dB) | -17.10 | -6.91 | -9.35 | -17.54 | 15.2 |
| vvL(dB) | -11.77 | -3.54 | -7.51 | -12.49 | 31.8 |
| ppN(m/s) | -12.24 | 12.13 | -0.08 | 4.11 | |
| ppT(m/s) | -96.71 | 95.86 | -0.65 | 32.43 | |
| hh/vv(dB) | -NaN | 40.82 | 10.17 | 22.64 | 1763 |
| vh/hh(dB) | -NaN | 0.37 | -6.96 | -5.71 | 133. |
| hv/vv(dB) | -NaN | -10.79 | -45.33 | -34.99 | 1081 |
| hn_jmp(dB) | -2.25 | 2.20 | -0.09 | -8.61 | 14.0 |
| vn_jmp(dB) | -2.84 | 2.16 | -0.11 | -8.54 | 14.3 |



IHOP 2002 (dual-antenna config, modes 1,3,4,7) Data (cal: 49.0,50.0)

W2002-06-25-17-45-02 - PPMAG4
 IRIG:1,UTC: 17:44:46.68 to 17:53:12.12, Dur: 506s
 TimeLngth: 505.44s, TimeInt: 29ms (34.2pps)
 TimeCor=-13.0s, DSPDif(mn,min,mx):29,28,369
 PPS(min,max,std): 24,36,2.38
 Prof: 334 to 17599, NumProf(t/r): 17265/17265
 MxACQtime: 33ms; DRate: 191.2KB/s; Flags: 0, 0, 0
 Pulse: 275ns, IFfilt: 5.0MHz; ppPol: HH HV VV
 TxPol: HHVV, PRF: 20 10 20 10 kHz
 Range: Delay 75m, Spacing 15m, Gates 100
 Ave. Pulses: 84, Rng/Prof Aspect@90m/s: 5.7

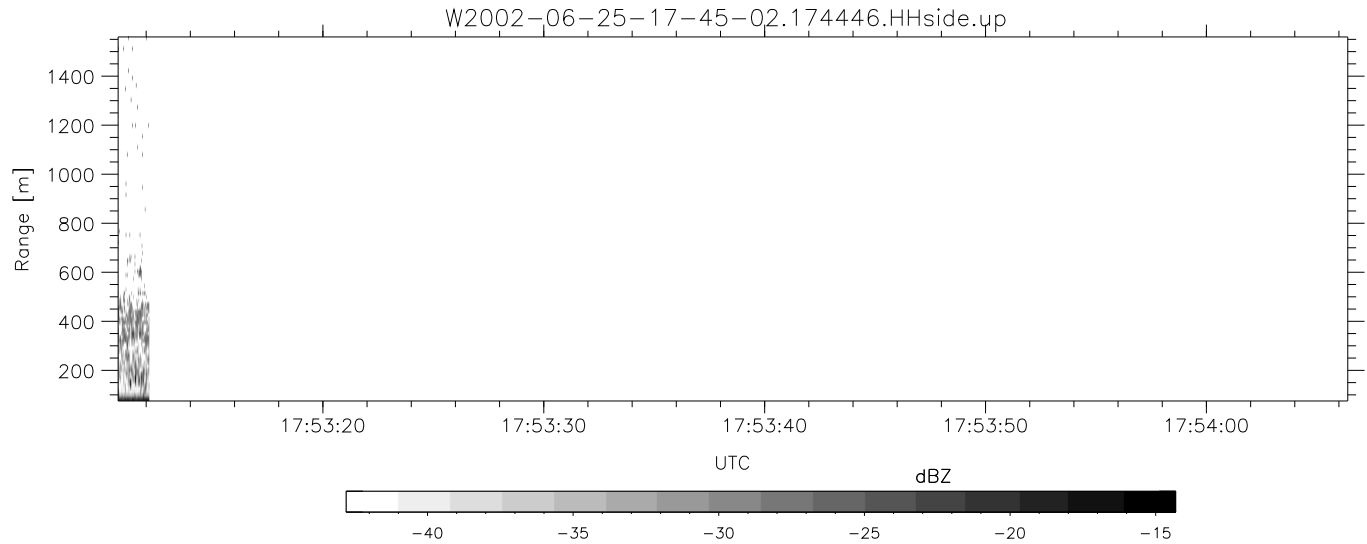
| | Min | Max | Mean | Std | Varc% |
|-----------|--------|--------|--------|--------|-------|
| hhN(dB) | -68.50 | -65.13 | -66.70 | -76.66 | 10.1 |
| vvN(dB) | -68.14 | -64.11 | -65.68 | -75.62 | 10.2 |
| hhL(dB) | -17.10 | -6.91 | -9.35 | -17.54 | 15.2 |
| vvL(dB) | -11.77 | -3.54 | -7.51 | -12.49 | 31.8 |
| ppN(m/s) | -12.24 | 12.13 | -0.08 | 4.11 | |
| ppT(m/s) | -96.71 | 95.86 | -0.65 | 32.43 | |
| hh/vv(dB) | -NaN | 40.82 | 10.17 | 22.64 | 1763 |
| vh/hh(dB) | -NaN | 0.37 | -6.96 | -5.71 | 133. |
| hv/vv(dB) | -NaN | -10.79 | -45.33 | -34.99 | 1081 |
| hnjmp(dB) | -2.25 | 2.20 | -0.09 | -8.61 | 14.0 |
| vnjmp(dB) | -2.84 | 2.16 | -0.11 | -8.54 | 14.3 |



IHOP 2002 (dual-antenna config, modes 1,3,4,7) Data (cal: 49.0,50.0)

W2002-06-25-17-45-02 - PPMAG4

| | Min | Max | Mean | Std | Varc% |
|---|-------------|--------|--------|--------|-------------|
| IRIG:1,UTC: 17:44:46.68 to 17:53:12.12, Dur: 506s | -68.50 | -65.13 | -66.70 | -76.66 | 10.1 |
| TimeLngth: 505.44s, TimeInt: 29ms (34.2pps) | -68.14 | -64.11 | -65.68 | -75.62 | 10.2 |
| TimeCor=-13.0s, DSPDif(mn,min,mx):29,28,369 | -17.10 | -6.91 | -9.35 | -17.54 | 15.2 |
| PPS(min,max,std): 24,36,2.38 | -11.77 | -3.54 | -7.51 | -12.49 | 31.8 |
| Prof: 334 to 17599, NumProf(t/r): 17265/17265 | -12.24 | 12.13 | -0.08 | 4.11 | |
| MxACQtime: 33ms; DRate: 191.2KB/s; Flags: 0, 0, 0 | -96.71 | 95.86 | -0.65 | 32.43 | |
| Pulse: 275ns, IFfilt: 5.0MHz; ppPol: HH HV VV | hh/vv (dB) | -NaN | 40.82 | 10.17 | 22.64 1763 |
| TxPol: HHVV, PRF: 20 10 20 10 kHz | vh/hh (dB) | -NaN | 0.37 | -6.96 | -5.71 133. |
| Range: Delay 75m, Spacing 15m, Gates 100 | hv/vv (dB) | -NaN | -10.79 | -45.33 | -34.99 1081 |
| Ave. Pulses: 84, Rng/Prof Aspect@90m/s: 5.7 | hn/jmp (dB) | -2.25 | 2.20 | -0.09 | -8.61 14.0 |
| | vn/jmp (dB) | -2.84 | 2.16 | -0.11 | -8.54 14.3 |



IHOP 2002 (dual-antenna config, modes 1,3,4,7) Data (cal: 49.0,50.0)

| | | | | | | |
|---|------------|--------|--------|--------|--------|-------|
| W2002-06-25-17-45-02 - PPMAG4 | | | | | | |
| IRIG:1,UTC: 17:44:46.68 to 17:53:12.12, Dur: 506s | hhN(dB) | Min | Max | Mean | Std | Varc% |
| TimeLngth: 505.44s, TimeInt: 29ms (34.2pps) | vvN(dB) | -68.14 | -64.11 | -65.68 | -75.62 | 10.2 |
| TimeCor=-13.0s, DSPDif(mn,min,mx):29,28,369 | hhL(dB) | -17.10 | -6.91 | -9.35 | -17.54 | 15.2 |
| PPS(min,max,std): 24,36,2.38 | vvL(dB) | -11.77 | -3.54 | -7.51 | -12.49 | 31.8 |
| Prof: 334 to 17599, NumProf(t/r): 17265/17265 | ppN(m/s) | -12.24 | 12.13 | -0.08 | 4.11 | |
| MxACQtime: 33ms; DRate: 191.2KB/s; Flags: 0, 0, 0 | ppT(m/s) | -96.71 | 95.86 | -0.65 | 32.43 | |
| Pulse: 275ns, IFfilt: 5.0MHz; ppPol: HH HV VV | hh/vv(dB) | -NaN | 40.82 | 10.17 | 22.64 | 1763 |
| TxPol: HHVV, PRF: 20 10 20 10 kHz | vh/hh(dB) | -NaN | 0.37 | -6.96 | -5.71 | 133. |
| Range: Delay 75m, Spacing 15m, Gates 100 | hv/vv(dB) | -NaN | -10.79 | -45.33 | -34.99 | 1081 |
| Ave. Pulses: 84, Rng/Prof Aspect@90m/s: 5.7 | hn/jmp(dB) | -2.25 | 2.20 | -0.09 | -8.61 | 14.0 |
| | vn/jmp(dB) | -2.84 | 2.16 | -0.11 | -8.54 | 14.3 |