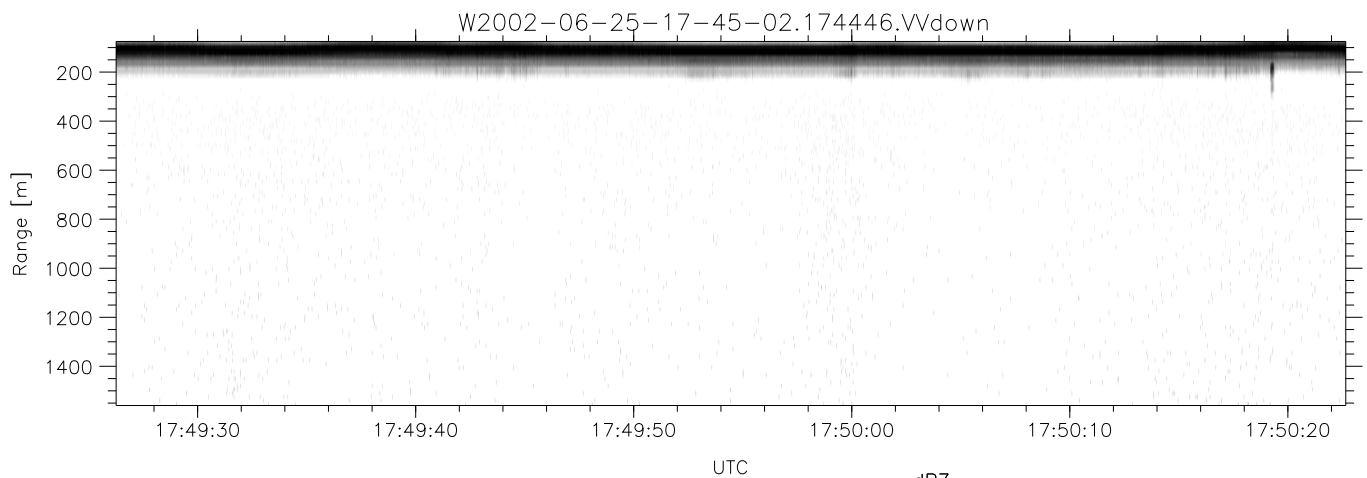
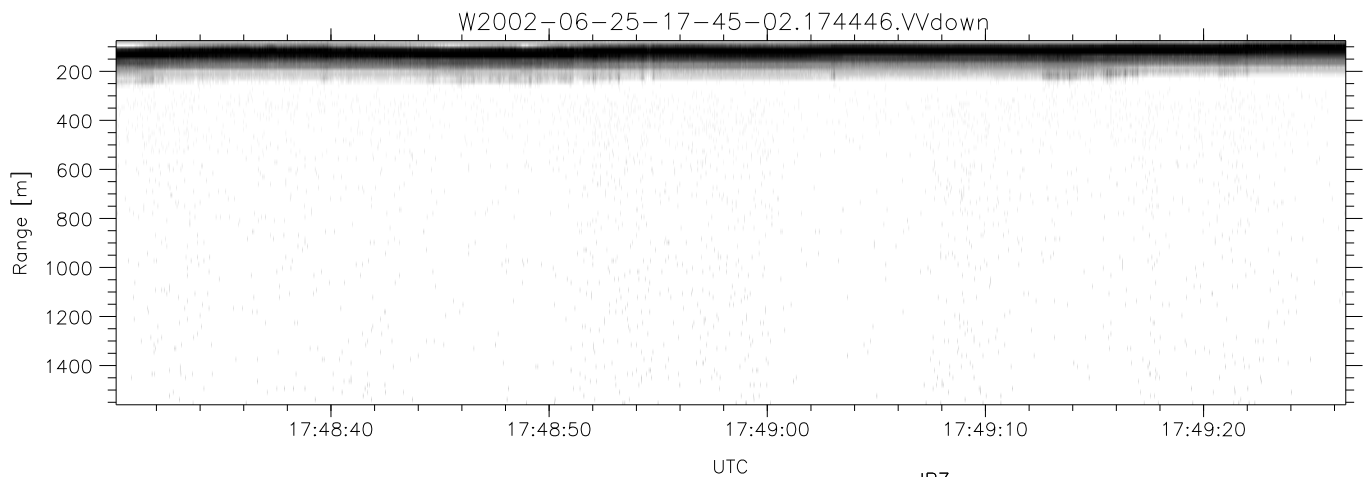
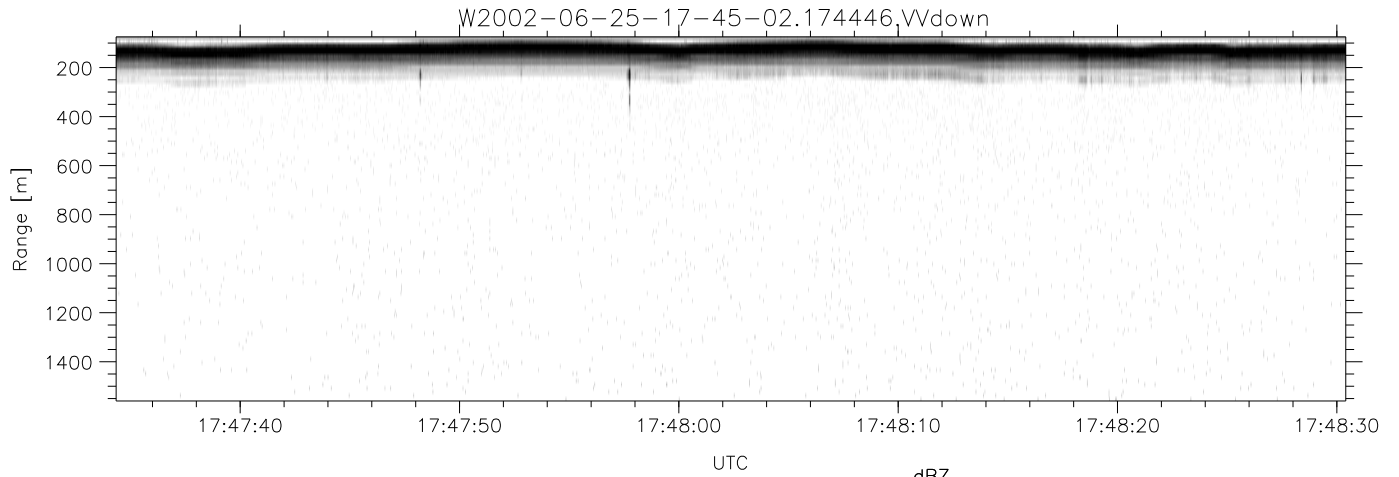


IHOP 2002 (dual-antenna config, modes 1,3,4,7) Data (cal: 49.0,50.0)

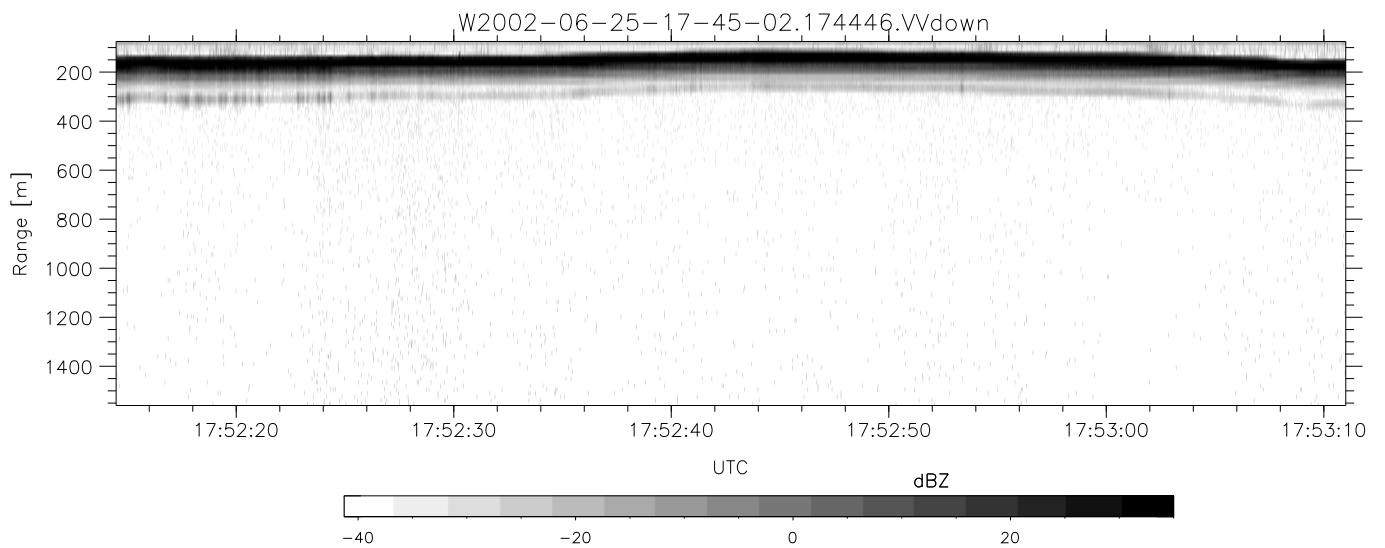
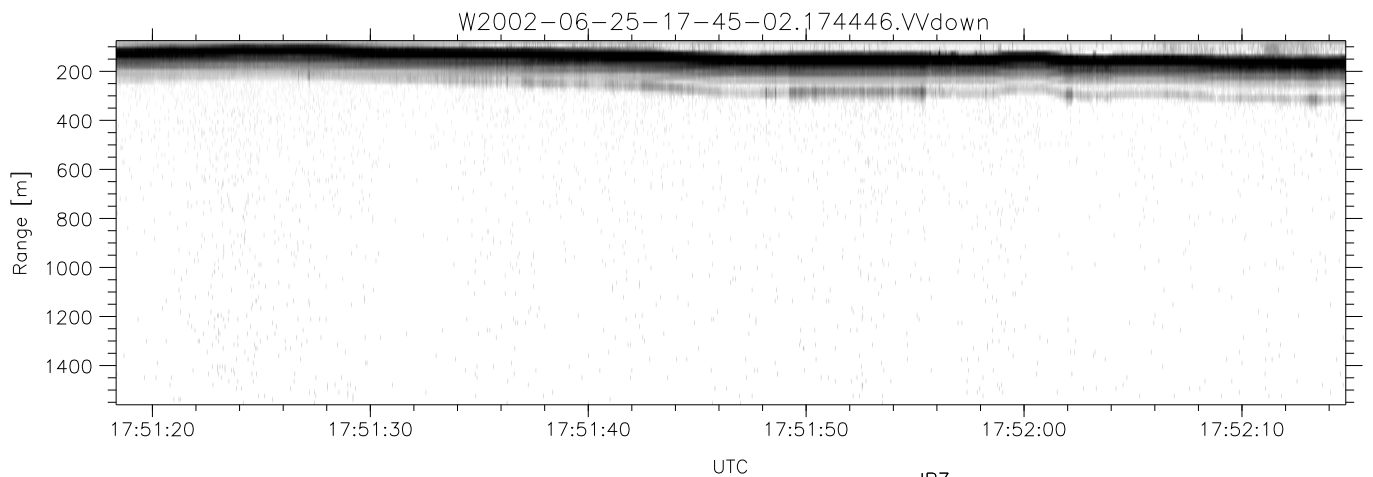
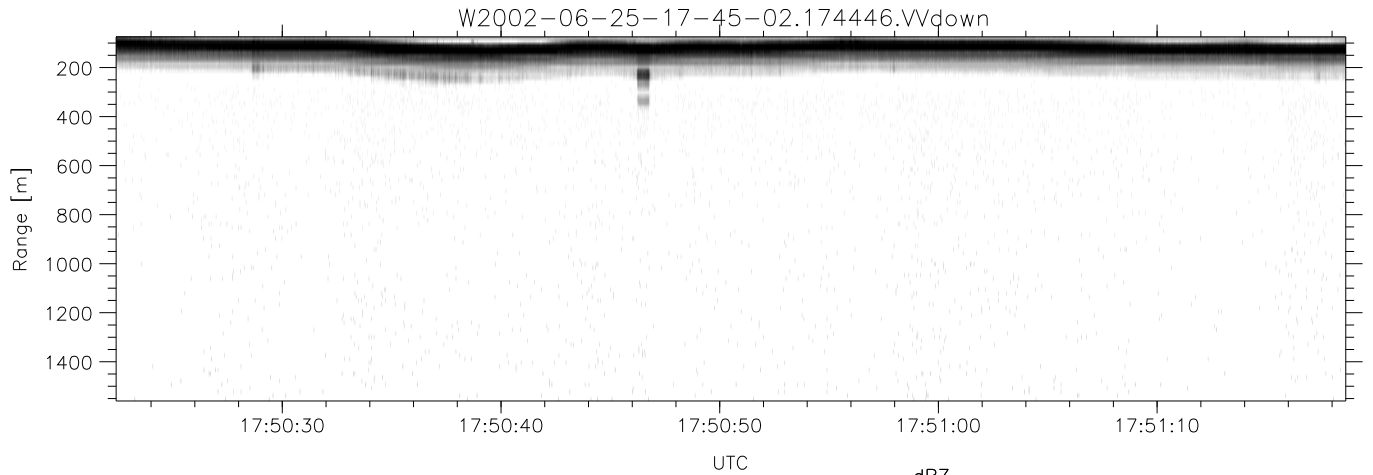
W2002-06-25-17-45-02 - PPMAG4

	Min	Max	Mean	Std	Varc%	
IRIG:1,UTC: 17:44:46.68 to 17:53:12.12, Dur: 506s	hhN (dB)	-68.50	-65.13	-66.70	-76.66	10.1
TimeLngth: 505.44s, TimeInt: 29ms (34.2pps)	vvN (dB)	-68.14	-64.11	-65.68	-75.62	10.2
TimeCor=-13.0s, DSPDif(mn,min,mx):29,28,369	hhL (dB)	-17.10	-6.91	-9.35	-17.54	15.2
PPS(min,max,std): 24,36,2.38	vvL (dB)	-11.77	-3.54	-7.51	-12.49	31.8
Prof: 334 to 17599, NumProf(t/r): 17265/17265	ppN (m/s)	-12.24	12.13	-0.08	4.11	
MxACQtime: 33ms; DRate: 191.2KB/s; Flags: 0, 0, 0	ppT (m/s)	-96.71	95.86	-0.65	32.43	
Pulse: 275ns, IFfilt: 5.0MHz; ppPol: HH HV VV	hh/vv (dB)	-NaN	40.82	10.17	22.64	1763
TxPol: HHVV, PRF: 20 10 20 10 kHz	vh/hh (dB)	-NaN	0.37	-6.96	-5.71	133.
Range: Delay 75m, Spacing 15m, Gates 100	hv/vv (dB)	-NaN	-10.79	-45.33	-34.99	1081
Ave. Pulses: 84, Rng/Prof Aspect@90m/s: 5.7	hn_jmp (dB)	-2.25	2.20	-0.09	-8.61	14.0
	vn_jmp (dB)	-2.84	2.16	-0.11	-8.54	14.3



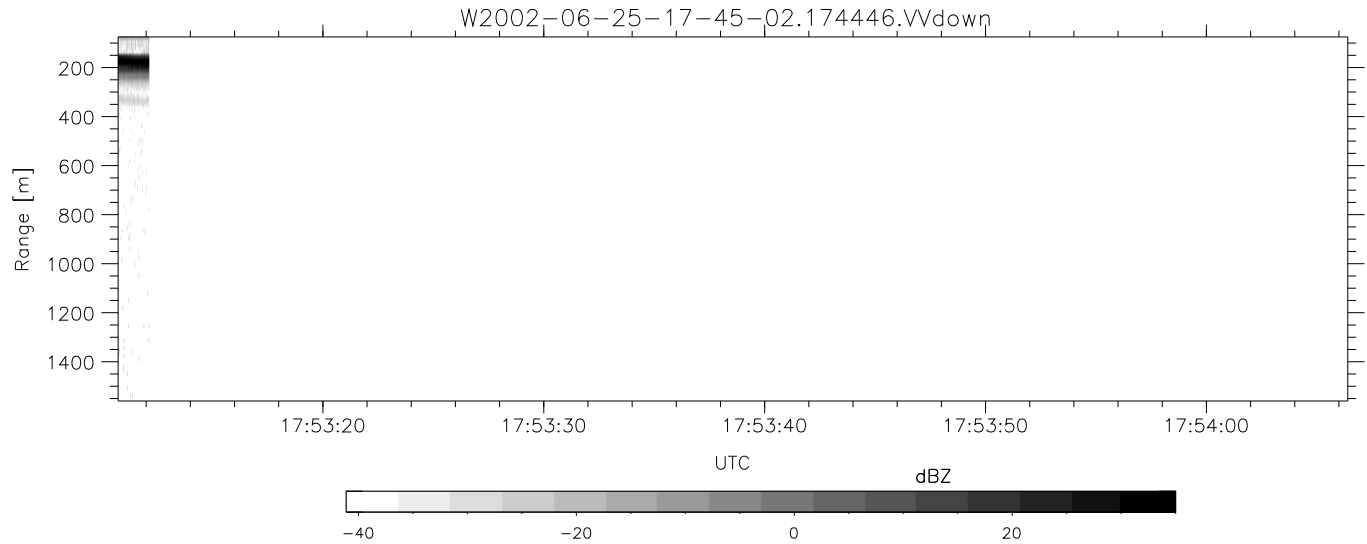
IHOP 2002 (dual-antenna config, modes 1,3,4,7) Data (cal: 49.0,50.0)

W2002-06-25-17-45-02 - PPMAG4	Min	Max	Mean	Std	Varc%
IRIG:1,UTC: 17:44:46.68 to 17:53:12.12, Dur: 506s	-68.50	-65.13	-66.70	-76.66	10.1
TimeLngth: 505.44s, TimeInt: 29ms (34.2pps)	-68.14	-64.11	-65.68	-75.62	10.2
TimeCor=-13.0s, DSPDif(mn,min,mx):29,28,369	-17.10	-6.91	-9.35	-17.54	15.2
PPS(min,max,std): 24,36,2.38	-11.77	-3.54	-7.51	-12.49	31.8
Prof: 334 to 17599, NumProf(t/r): 17265/17265	ppN(m/s)	-12.24	12.13	-0.08	4.11
MxACQtime: 33ms; DRate: 191.2KB/s; Flags: 0, 0, 0	ppT(m/s)	-96.71	95.86	-0.65	32.43
Pulse: 275ns, IFfilt: 5.0MHz; ppPol: HH HV VV	hh/vv(dB)	-NaN	40.82	10.17	22.64 1763
TxPol: HHVV, PRF: 20 10 20 10 kHz	vh/hh(dB)	-NaN	0.37	-6.96	-5.71 133.
Range: Delay 75m, Spacing 15m, Gates 100	hv/vv(dB)	-NaN	-10.79	-45.33	-34.99 1081
Ave. Pulses: 84, Rng/Prof Aspect@90m/s: 5.7	hn/jmp(dB)	-2.25	2.20	-0.09	-8.61 14.0
	vn/jmp(dB)	-2.84	2.16	-0.11	-8.54 14.3



IHOP 2002 (dual-antenna config, modes 1,3,4,7) Data (cal: 49.0,50.0)

	Min	Max	Mean	Std	Varc%	
W2002-06-25-17-45-02 - PPMAG4						
IRIG:1,UTC: 17:44:46.68 to 17:53:12.12, Dur: 506s	hhN(dB)	-68.50	-65.13	-66.70	-76.66	10.1
TimeLngth: 505.44s, TimeInt: 29ms (34.2pps)	vvN(dB)	-68.14	-64.11	-65.68	-75.62	10.2
TimeCor=-13.0s, DSPDif(mn,min,mx):29,28,369	hhL(dB)	-17.10	-6.91	-9.35	-17.54	15.2
PPS(min,max,std): 24,36,2.38	vvL(dB)	-11.77	-3.54	-7.51	-12.49	31.8
Prof: 334 to 17599, NumProf(t/r): 17265/17265	ppN(m/s)	-12.24	12.13	-0.08	4.11	
MxACQtime: 33ms; DRate: 191.2KB/s; Flags: 0, 0, 0	ppT(m/s)	-96.71	95.86	-0.65	32.43	
Pulse: 275ns, IFfilt: 5.0MHz; ppPol: HH HV VV	hh/vv(dB)	-NaN	40.82	10.17	22.64	1763
TxPol: HHVV, PRF: 20 10 20 10 kHz	vh/hh(dB)	-NaN	0.37	-6.96	-5.71	133.
Range: Delay 75m, Spacing 15m, Gates 100	hv/vv(dB)	-NaN	-10.79	-45.33	-34.99	1081
Ave. Pulses: 84, Rng/Prof Aspect@90m/s: 5.7	hn_jmp(dB)	-2.25	2.20	-0.09	-8.61	14.0
	vn_jmp(dB)	-2.84	2.16	-0.11	-8.54	14.3



IHOP 2002 (dual-antenna config, modes 1,3,4,7) Data (cal: 49.0,50.0)

W2002-06-25-17-45-02 - PPMAG4						
IRIG:1,UTC: 17:44:46.68 to 17:53:12.12, Dur: 506s	hhN(dB)	Min	Max	Mean	Std	Varc%
TimeLngth: 505.44s, TimeInt: 29ms (34.2pps)	vvN(dB)	-68.14	-64.11	-65.68	-75.62	10.2
TimeCor=-13.0s, DSPDif(mn,min,mx):29,28,369	hhL(dB)	-17.10	-6.91	-9.35	-17.54	15.2
PPS(min,max,std): 24,36,2.38	vvL(dB)	-11.77	-3.54	-7.51	-12.49	31.8
Prof: 334 to 17599, NumProf(t/r): 17265/17265	ppN(m/s)	-12.24	12.13	-0.08	4.11	
MxACQtime: 33ms; DRate: 191.2KB/s; Flags: 0, 0, 0	ppT(m/s)	-96.71	95.86	-0.65	32.43	
Pulse: 275ns, IFfilt: 5.0MHz; ppPol: HH HV VV	hh/vv(dB)	-NaN	40.82	10.17	22.64	1763
TxPol: HHVV, PRF: 20 10 20 10 kHz	vh/hh(dB)	-NaN	0.37	-6.96	-5.71	133.
Range: Delay 75m, Spacing 15m, Gates 100	hv/vv(dB)	-NaN	-10.79	-45.33	-34.99	1081
Ave. Pulses: 84, Rng/Prof Aspect@90m/s: 5.7	hn/jmp(dB)	-2.25	2.20	-0.09	-8.61	14.0
	vn/jmp(dB)	-2.84	2.16	-0.11	-8.54	14.3