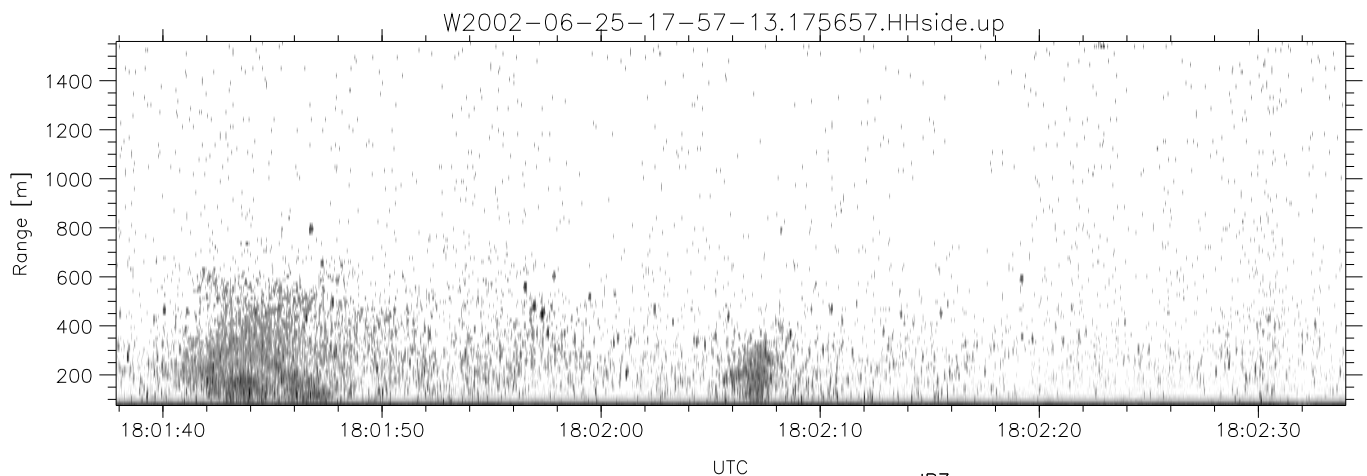
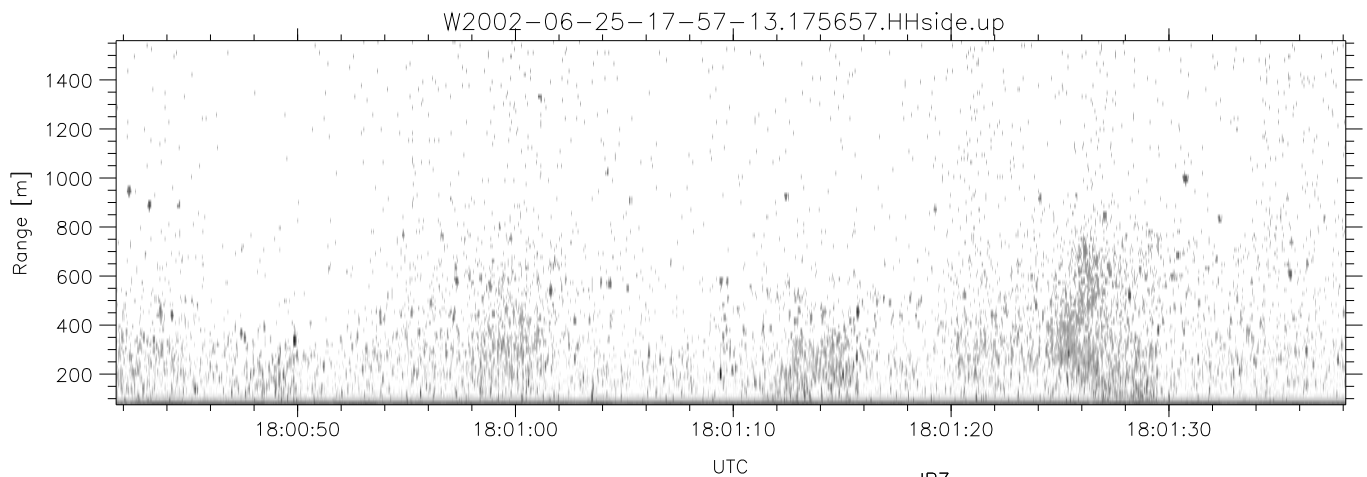
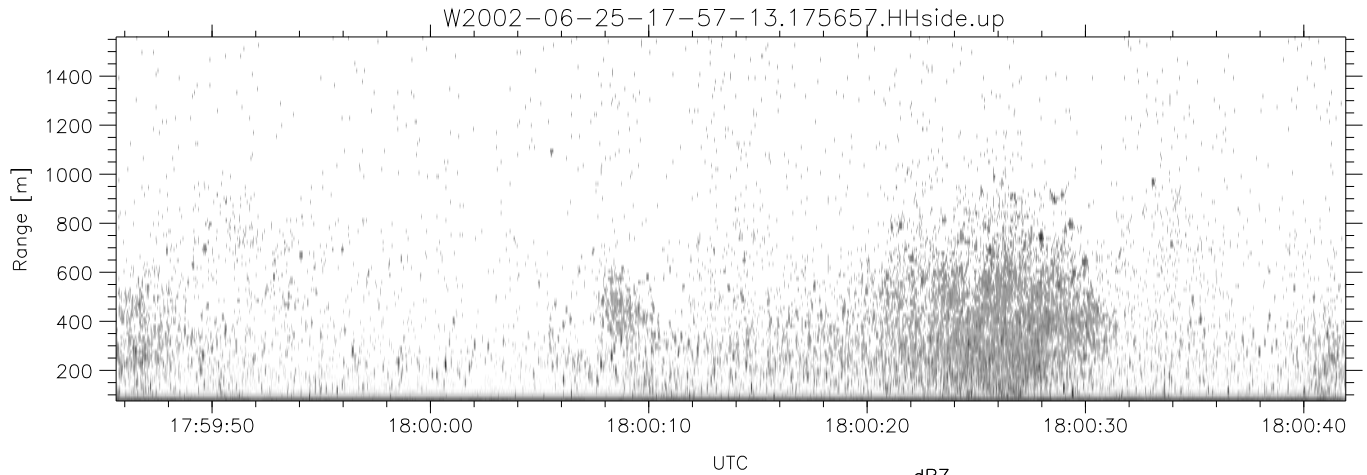


IHOP 2002 (dual-antenna config, modes 1,3,4,7) Data (cal: 49.0,50.0)

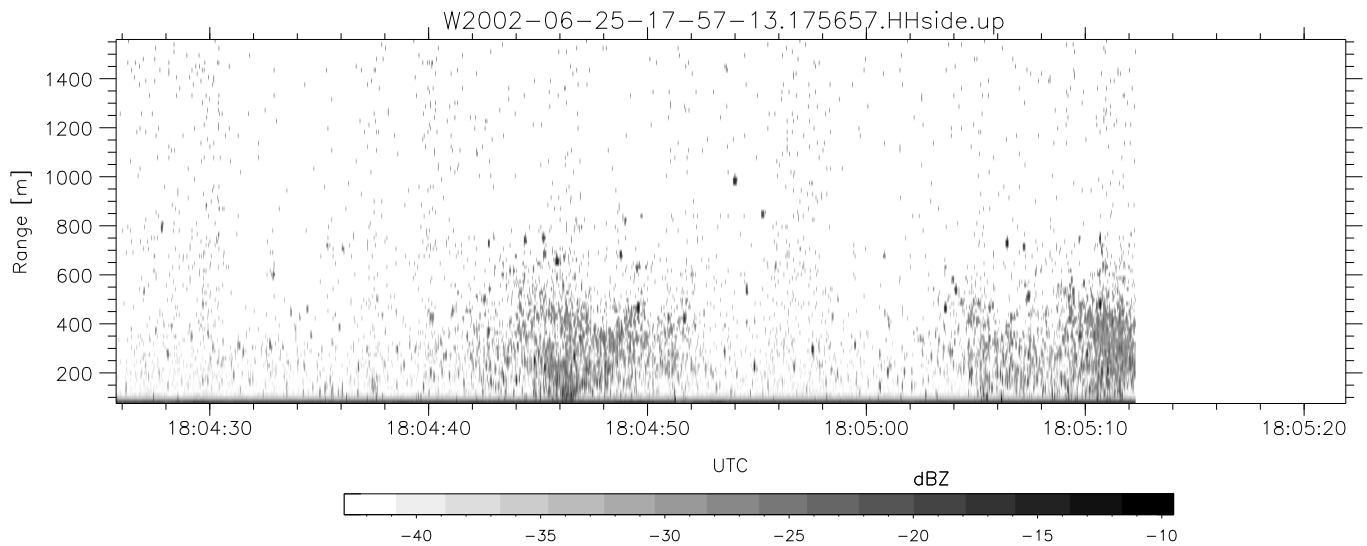
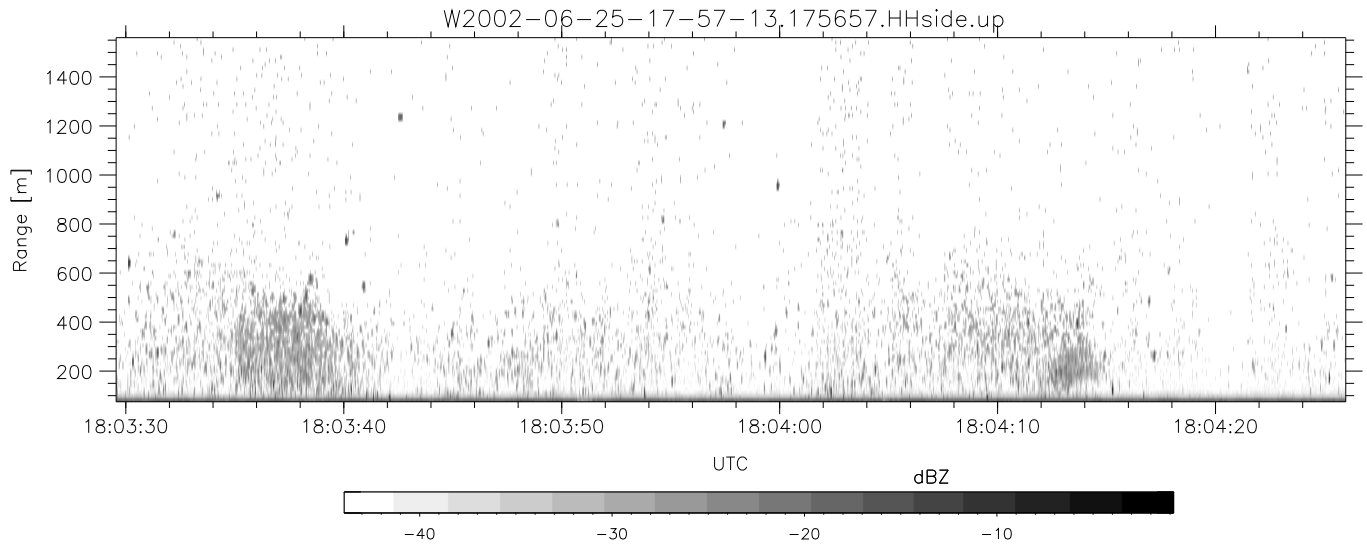
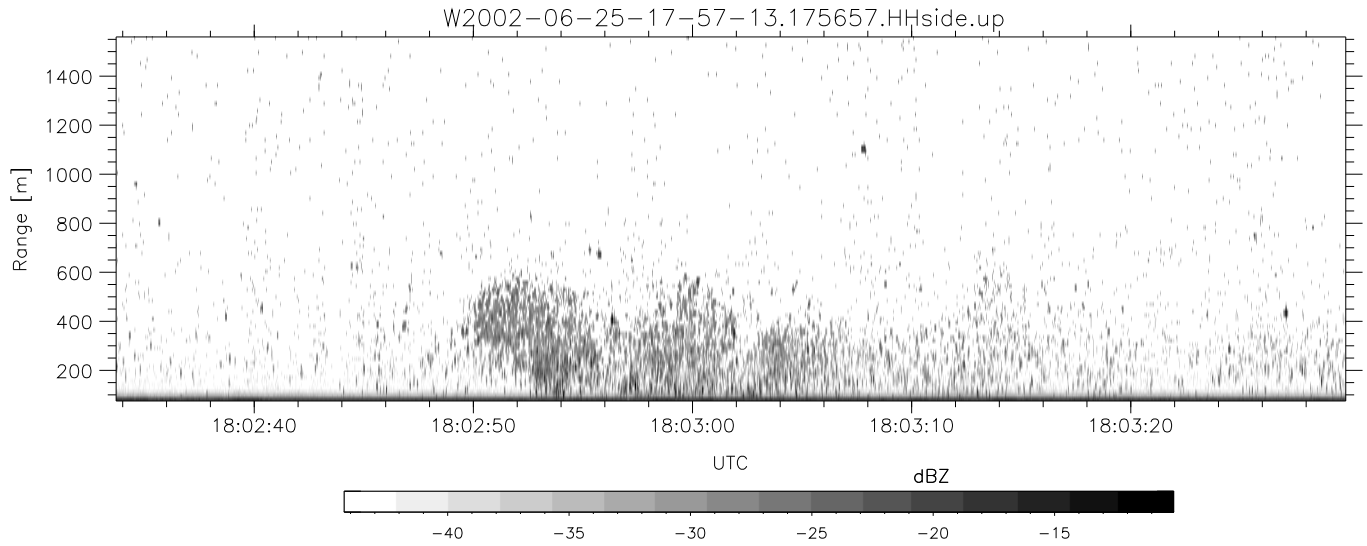
W2002-06-25-17-57-13 - PPMAG4	Min	Max	Mean	Std	Varc%	
IRIG:1,UTC: 17:56:57.83 to 18:05:12.29, Dur: 495s	hhN (dB)	-68.26	-63.56	-66.29	-74.47	15.2
TimeLngth: 494.46s, TimeInt: 29ms (34.1pps)	vvN (dB)	-67.50	-63.65	-65.58	-75.35	10.5
TimeCor=-13.0s, DSPDif(mn,min,mx):29,28,309	hhL (dB)	-16.73	-7.10	-9.55	-18.39	13.1
PPS(min,max,std): 23,36,2.41	vvL (dB)	-10.74	-4.27	-7.95	-13.17	30.0
Prof: 465 to 17318, NumProf(t/r): 16853/16853	ppN (m/s)	-12.42	12.69	0.02	4.15	
MxACQtime: 33ms; DRate: 190.8KB/s; Flags: 0, 0, 0	ppT (m/s)	-98.11	100.24	0.14	32.75	
Pulse: 275ns, IFfilt: 5.0MHz; ppPol: HH HV VV	hh/vv (dB)	-NaN	42.31	9.82	27.11	5350
TxPol: HHVV, PRF: 20 10 20 10 kHz	vh/hh (dB)	-NaN	8.01	-3.64	0.87	282.
Range: Delay 75m, Spacing 15m, Gates 100	hv/vv (dB)	-NaN	-0.36	-36.16	-21.34	3034
Ave. Pulses: 84, Rng/Prof Aspect@90m/s: 5.7	hn/jmp (dB)	-2.14	2.26	0.18	-8.34	14.0
	vn/jmp (dB)	-2.21	2.27	0.19	-8.25	14.3



IHOP 2002 (dual-antenna config, modes 1,3,4,7) Data (cal: 49.0,50.0)

W2002-06-25-17-57-13 - PPMAG4  
 IRIG:1,UTC: 17:56:57.83 to 18:05:12.29, Dur: 495s  
 TimeLngth: 494.46s, TimeInt: 29ms (34.1pps)  
 TimeCor=-13.0s, DSPDif(mn,min,mx):29,28,309  
 PPS(min,max,std): 23,36,2.41  
 Prof: 465 to 17318, NumProf(t/r): 16853/16853  
 MxACQtime: 33ms; DRate: 190.8KB/s; Flags: 0, 0, 0  
 Pulse: 275ns, IFfilt: 5.0MHz; ppPol: HH HV VV  
 TxPol: HHVV, PRF: 20 10 20 10 kHz  
 Range: Delay 75m, Spacing 15m, Gates 100  
 Ave. Pulses: 84, Rng/Prof Aspect@90m/s: 5.7

	Min	Max	Mean	Std	Varc%
hhN(dB)	-68.26	-63.56	-66.29	-74.47	15.2
vvN(dB)	-67.50	-63.65	-65.58	-75.35	10.5
hhL(dB)	-16.73	-7.10	-9.55	-18.39	13.1
vvL(dB)	-10.74	-4.27	-7.95	-13.17	30.0
ppN(m/s)	-12.42	12.69	0.02	4.15	
ppT(m/s)	-98.11	100.24	0.14	32.75	
hh/vv(dB)	-NaN	42.31	9.82	27.11	5350
vh/hh(dB)	-NaN	8.01	-3.64	0.87	282.
hv/vv(dB)	-NaN	-0.36	-36.16	-21.34	3034
hnjmp(dB)	-2.14	2.26	0.18	-8.34	14.0
vnjmp(dB)	-2.21	2.27	0.19	-8.25	14.3



IHOP 2002 (dual-antenna config, modes 1,3,4,7) Data (cal: 49.0,50.0)

W2002-06-25-17-57-13 - PPMAG4  
 IRIG:1,UTC: 17:56:57.83 to 18:05:12.29, Dur: 495s  
 TimeLngth: 494.46s, TimeInt: 29ms (34.1pps)  
 TimeCor=-13.0s, DSPDif(mn,min,mx):29,28,309  
 PPS(min,max,std): 23,36,2.41  
 Prof: 465 to 17318, NumProf(t/r): 16853/16853  
 MxACQtime: 33ms; DRate: 190.8KB/s; Flags: 0, 0, 0  
 Pulse: 275ns, IFfilt: 5.0MHz; ppPol: HH HV VV  
 TxPol: HHVV, PRF: 20 10 20 10 kHz  
 Range: Delay 75m, Spacing 15m, Gates 100  
 Ave. Pulses: 84, Rng/Prof Aspect@90m/s: 5.7

	Min	Max	Mean	Std	Varc%
hhN(dB)	-68.26	-63.56	-66.29	-74.47	15.2
vvN(dB)	-67.50	-63.65	-65.58	-75.35	10.5
hhL(dB)	-16.73	-7.10	-9.55	-18.39	13.1
vvL(dB)	-10.74	-4.27	-7.95	-13.17	30.0
ppN(m/s)	-12.42	12.69	0.02	4.15	
ppT(m/s)	-98.11	100.24	0.14	32.75	
hh/vv(dB)	-NaN	42.31	9.82	27.11	5350
vh/hh(dB)	-NaN	8.01	-3.64	0.87	282.
hv/vv(dB)	-NaN	-0.36	-36.16	-21.34	3034
hn_jmp(dB)	-2.14	2.26	0.18	-8.34	14.0
vn_jmp(dB)	-2.21	2.27	0.19	-8.25	14.3