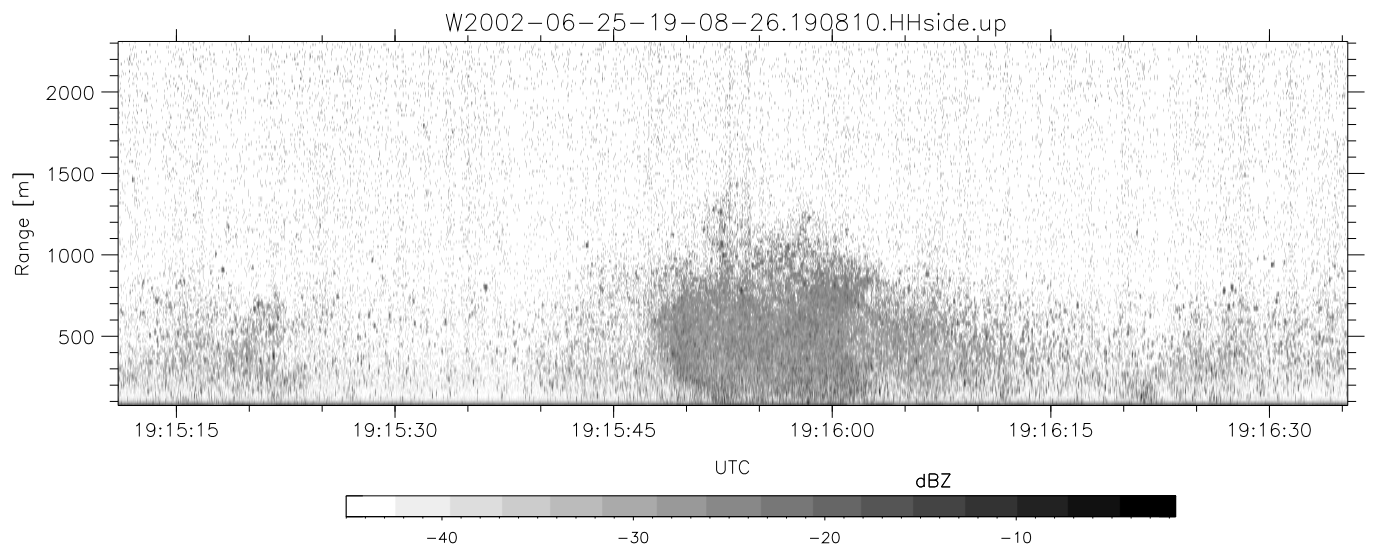
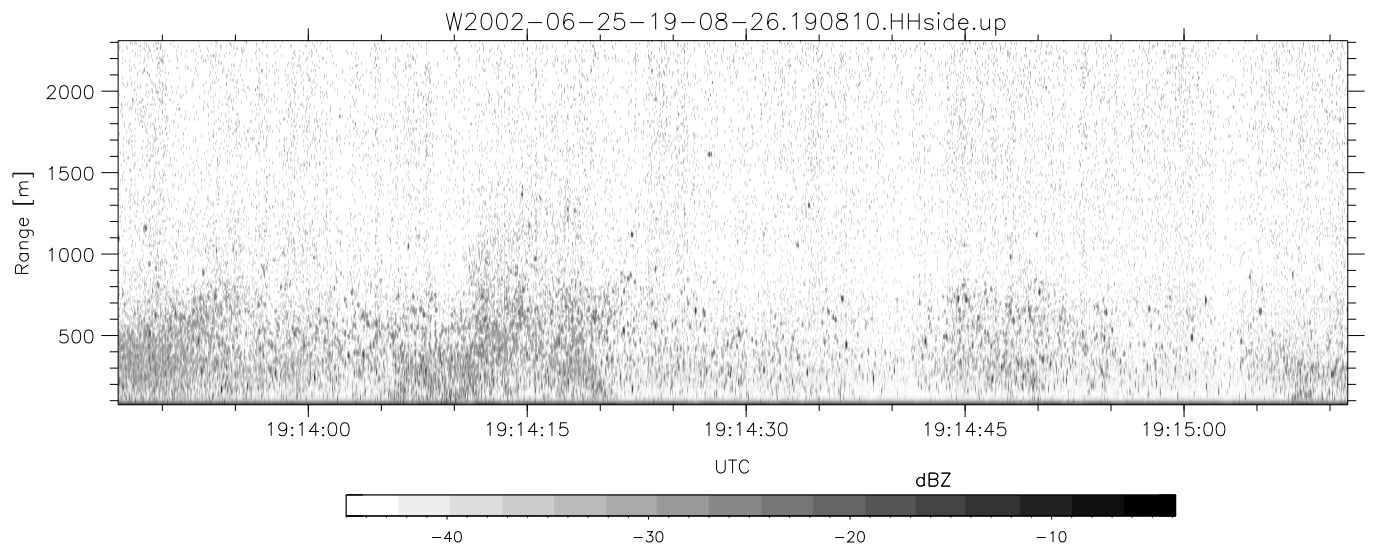
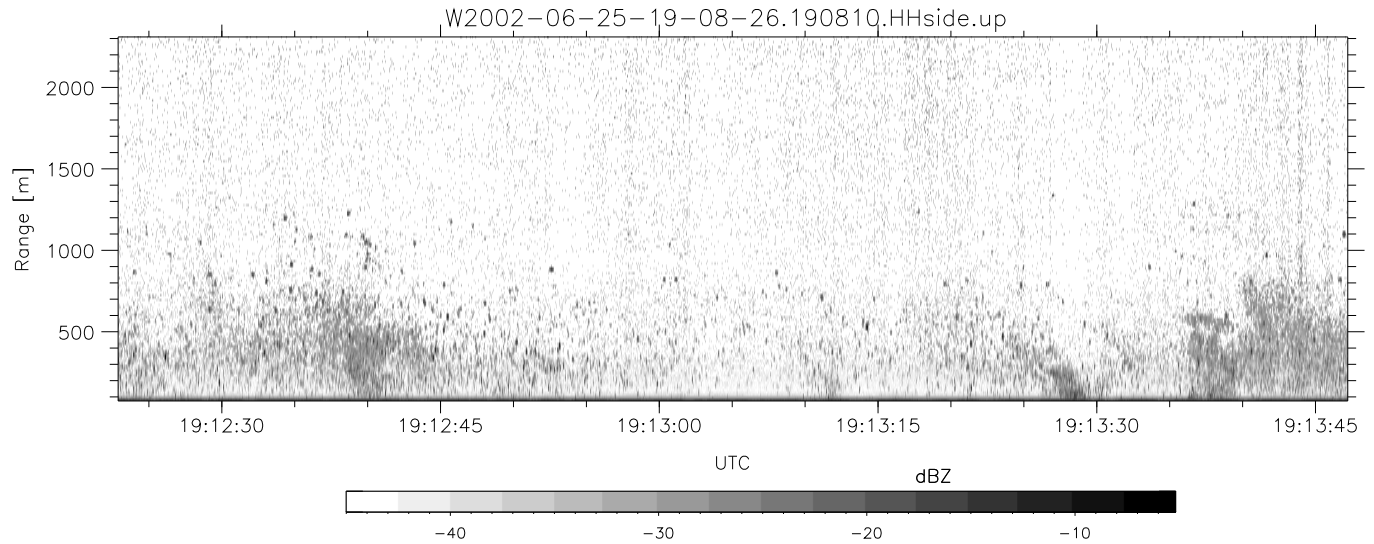


IHOP 2002 (dual-antenna config, modes 1,3,4,7) Data (cal: 49.0,50.0)

W2002-06-25-19-08-26 - SPPMAG  
 IRIG:1,UTC: 19:08:10.33 to 19:30:29.68, Dur: 1339s  
 TimeLngth: 1339.35s, TimeInt: 24ms (40.6pps)  
 TimeCor=-13.0s, DSPDif(mn,min,mx):24,20,642  
 PPS(min,max,std): 16,42,2.51  
 Prof: 482 to 54918, NumProf(t/r): 54436/30122  
 ProcTime/Recs: 19:08:10-19:20:31/0-30121  
 MxACQtime: 17ms; DRate: 97.3KB/s; Flags: 0, 0, 0  
 Pulse: 275ns, IFfilt: 5.0MHz; ppPol: HH  
 TxPol: H, PRF: 20 kHz  
 Range: Delay 75m, Spacing 15m, Gates 150  
 Ave. Pulses: 348, Rng/Prof Aspect@90m/s: 6.8

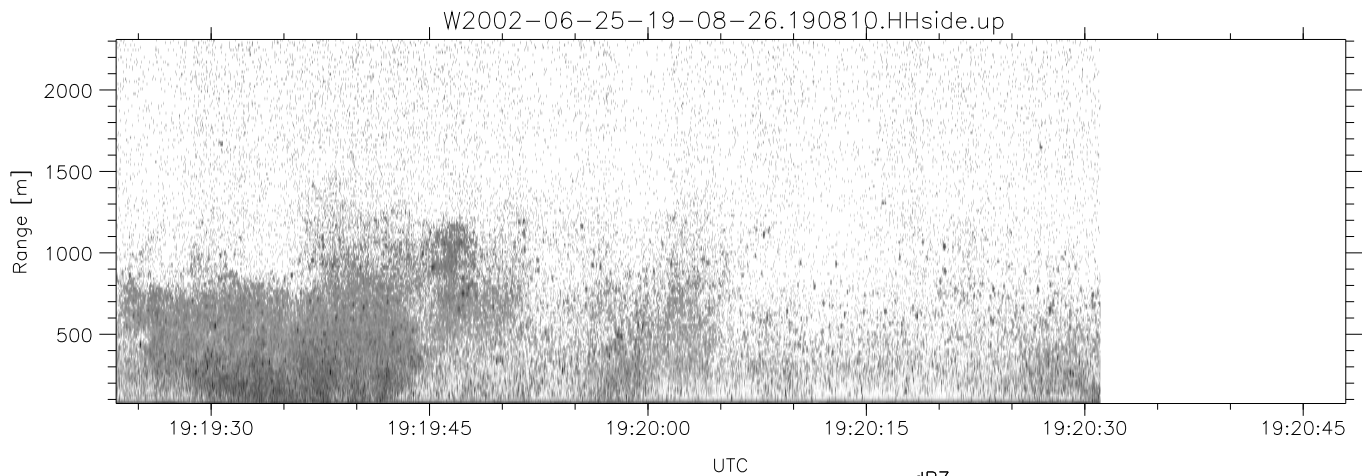
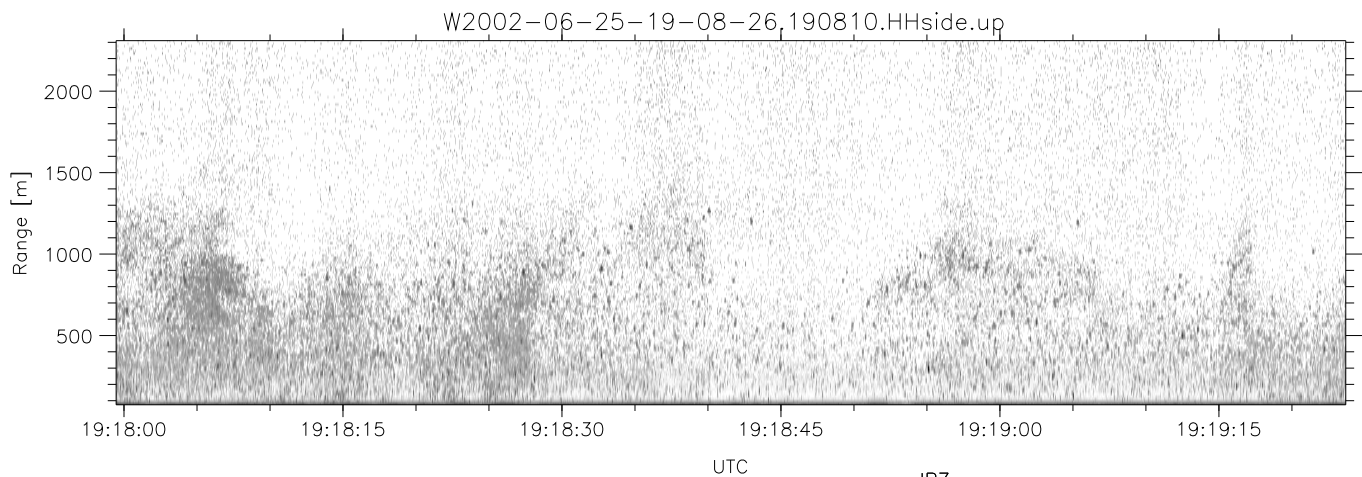
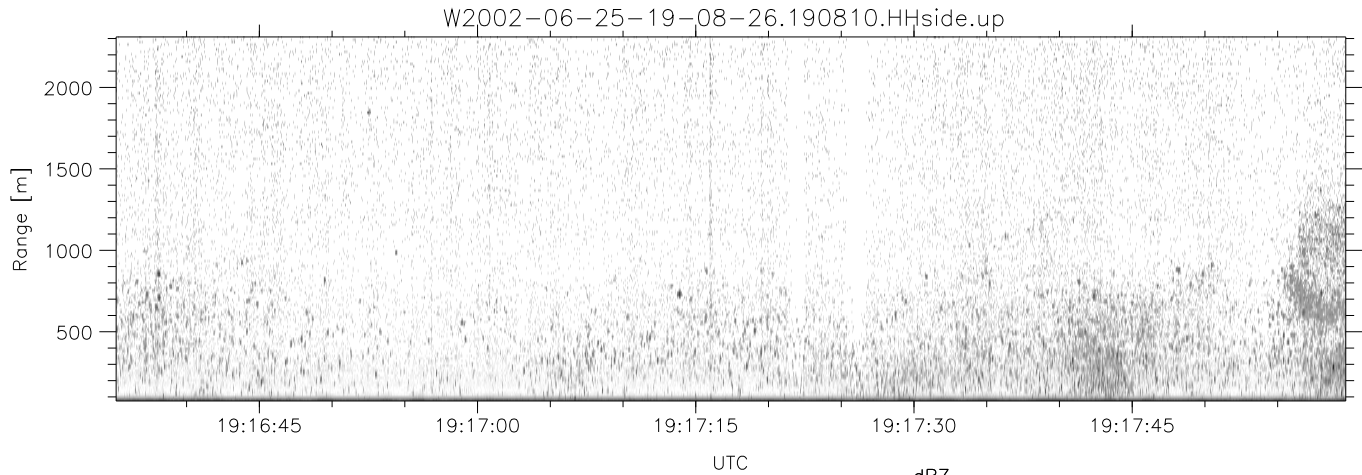
	Min	Max	Mean	Std	Varc%
hhN(dB)	-67.42	-61.15	-66.41	-75.79	11.5
vvN(dB)	-66.39	-61.05	-65.35	-75.92	8.8
hhL(dB)	-14.95	-0.70	-6.71	-9.68	50.5
vhL(dB)	-23.75	-0.85	-8.41	-10.33	64.4
ppN(m/s)	-15.80	15.80	0.06	8.95	
ppT(m/s)	-0.03	0.02	-0.00	0.01	
vh/hh(dB)	-NaN	-0.84	-12.06	-8.24	241.
hnjmp(dB)	-4.23	1.00	-0.11	-11.76	6.8
vnjmp(dB)	-2.93	1.09	-0.13	-11.67	7.0



IHOP 2002 (dual-antenna config, modes 1,3,4,7) Data (cal: 49.0,50.0)

W2002-06-25-19-08-26 - SPPMAG  
 IRIG:1,UTC: 19:08:10.33 to 19:30:29.68, Dur: 1339s  
 TimeLngth: 1339.35s, TimeInt: 24ms (40.6pps)  
 TimeCor=-13.0s, DSPDif(mn,min,mx):24,20,642  
 PPS(min,max,std): 16,42,2.51  
 Prof: 482 to 54918, NumProf(t/r): 54436/30122  
 ProcTime/Recs: 19:08:10-19:20:31/0-30121  
 MxACQtime: 17ms; DRate: 97.3KB/s; Flags: 0, 0, 0  
 Pulse: 275ns, IFfilt: 5.0MHz; ppPol: HH  
 TxPol: H, PRF: 20 kHz  
 Range: Delay 75m, Spacing 15m, Gates 150  
 Ave. Pulses: 348, Rng/Prof Aspect@90m/s: 6.8

	Min	Max	Mean	Std	Varc%
hhN(dB)	-67.42	-61.15	-66.41	-75.79	11.5
vvN(dB)	-66.39	-61.05	-65.35	-75.92	8.8
hhL(dB)	-14.95	-0.70	-6.71	-9.68	50.5
vhL(dB)	-23.75	-0.85	-8.41	-10.33	64.4
ppN(m/s)	-15.80	15.80	0.06	8.95	
ppT(m/s)	-0.03	0.02	-0.00	0.01	
vh/hh(dB)	-NaN	-0.84	-12.06	-8.24	241.
hnjmp(dB)	-4.23	1.00	-0.11	-11.76	6.8
vnjmp(dB)	-2.93	1.09	-0.13	-11.67	7.0



IHOP 2002 (dual-antenna config, modes 1,3,4,7) Data (cal: 49.0,50.0)

W2002-06-25-19-08-26 - SPPMAG  
 IRIG:1,UTC: 19:08:10.33 to 19:30:29.68, Dur: 1339s  
 TimeLngth: 1339.35s, TimeInt: 24ms (40.6pps)  
 TimeCor=-13.0s, DSPDif(mn,min,mx):24,20,642  
 PPS(min,max,std): 16,42,2.51  
 Prof: 482 to 54918, NumProf(t/r): 54436/30122  
 ProcTime/Recs: 19:08:10-19:20:31/0-30121  
 MxACQtime: 17ms; DRate: 97.3KB/s; Flags: 0, 0, 0  
 Pulse: 275ns, IFfilt: 5.0MHz; ppPol: HH  
 TxPol: H, PRF: 20 kHz  
 Range: Delay 75m, Spacing 15m, Gates 150  
 Ave. Pulses: 348, Rng/Prof Aspect@90m/s: 6.8

	Min	Max	Mean	Std	Varc%
hhN(dB)	-67.42	-61.15	-66.41	-75.79	11.5
vvN(dB)	-66.39	-61.05	-65.35	-75.92	8.8
hhL(dB)	-14.95	-0.70	-6.71	-9.68	50.5
vhL(dB)	-23.75	-0.85	-8.41	-10.33	64.4
ppN(m/s)	-15.80	15.80	0.06	8.95	
ppT(m/s)	-0.03	0.02	-0.00	0.01	
vh/hh(dB)	-NaN	-0.84	-12.06	-8.24	241.
hnjmp(dB)	-4.23	1.00	-0.11	-11.76	6.8
vnjmp(dB)	-2.93	1.09	-0.13	-11.67	7.0