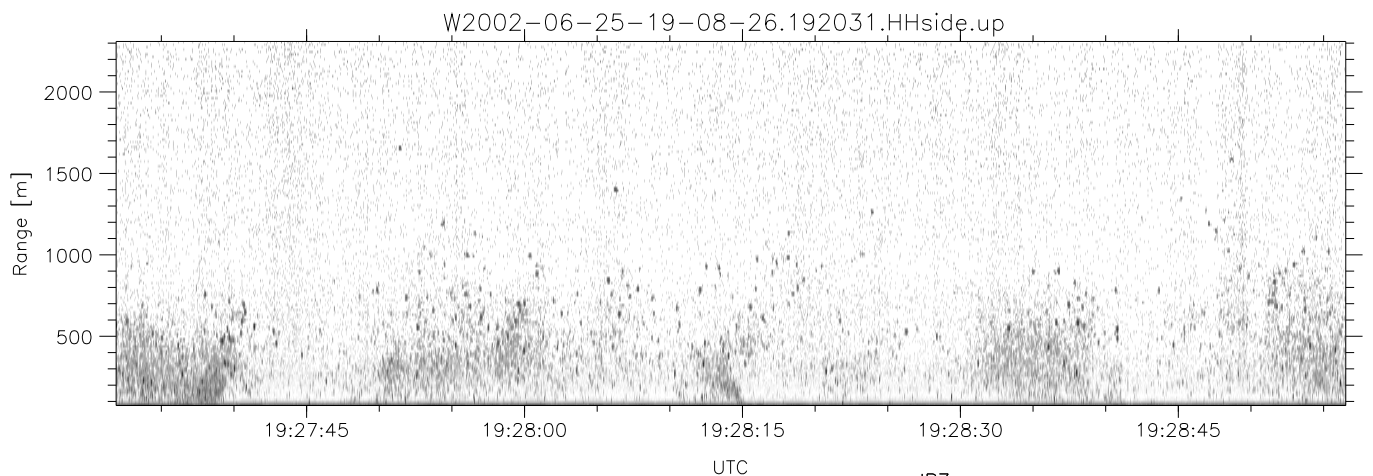
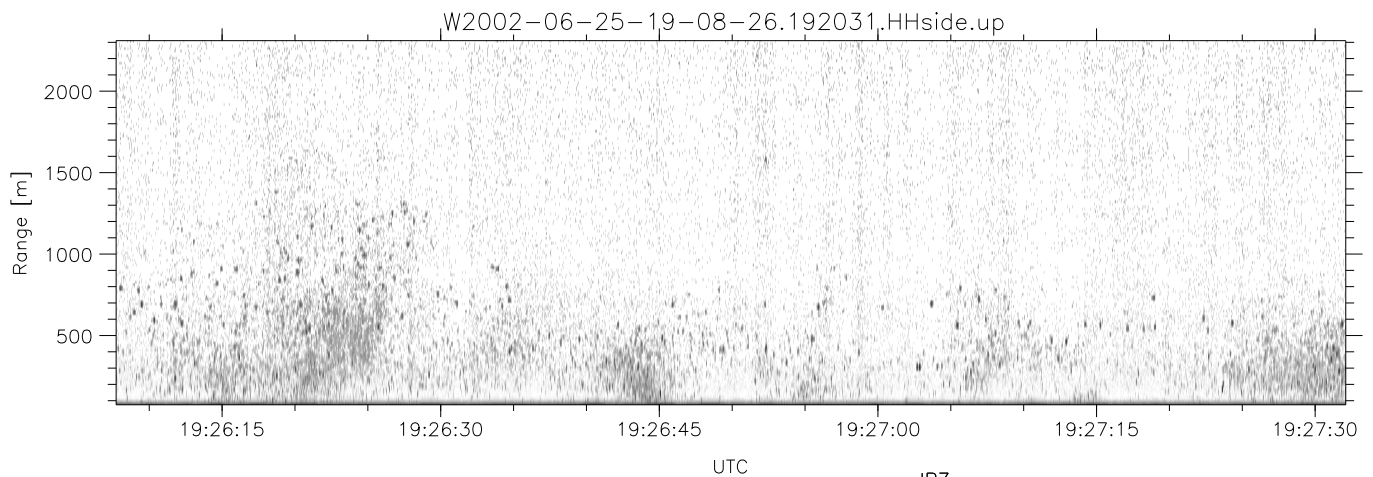
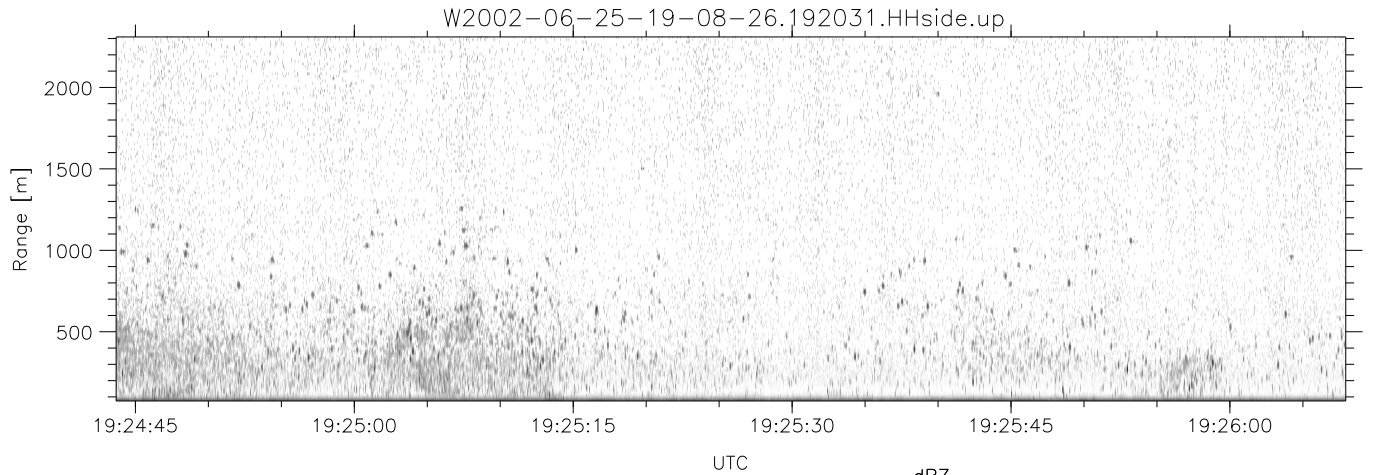


IHOP 2002 (dual-antenna config, modes 1,3,4,7) Data (cal: 49.0,50.0)

W2002-06-25-19-08-26 - SPPMAG
 IRIG:1,UTC: 19:08:10.33 to 19:30:29.68, Dur: 1339s
 TimeLngth: 1339.35s, TimeInt: 24ms (40.6pps)
 TimeCor=-13.0s, DSPDif(mn,min,mx):24,20,298
 PPS(min,max,std): 28,42,2.46
 Prof: 482 to 54918, NumProf(t/r): 54436/24314
 ProcTime/Recs: 19:20:31-19:30:29/30122-54435
 MxACQtime: 17ms; DRate: 97.3KB/s; Flags: 0, 0, 0
 Pulse: 275ns, IFfilt: 5.0MHz; ppPol: HH
 TxPol: H, PRF: 20 kHz
 Range: Delay 75m, Spacing 15m, Gates 150
 Ave. Pulses: 348, Rng/Prof Aspect@90m/s: 6.8

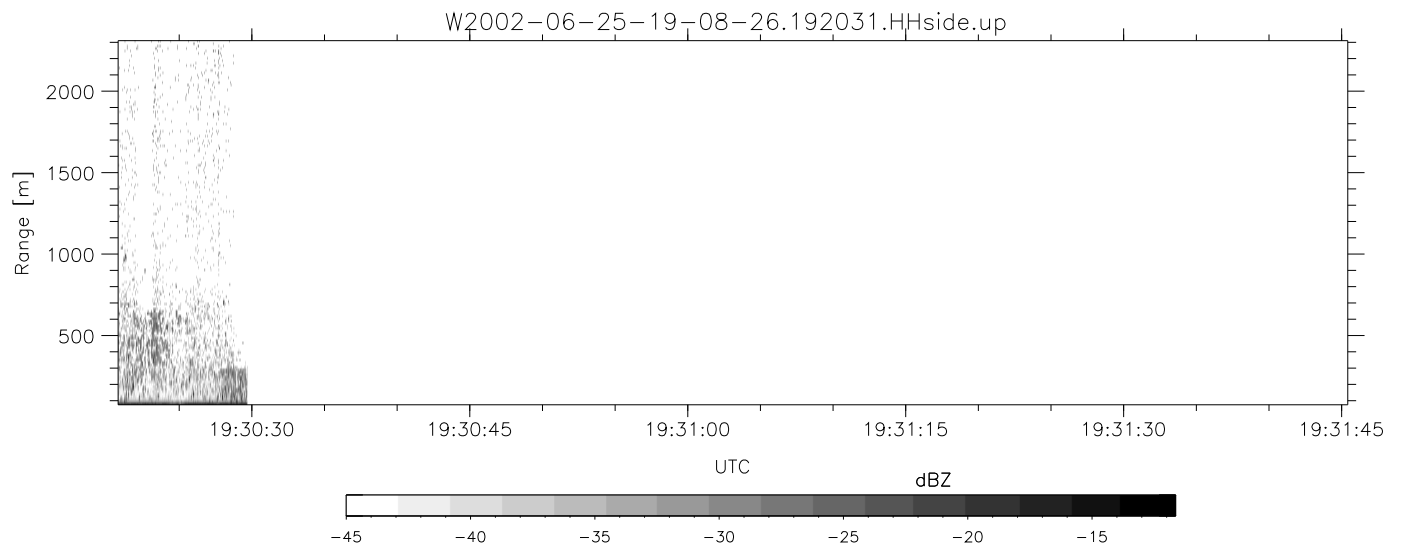
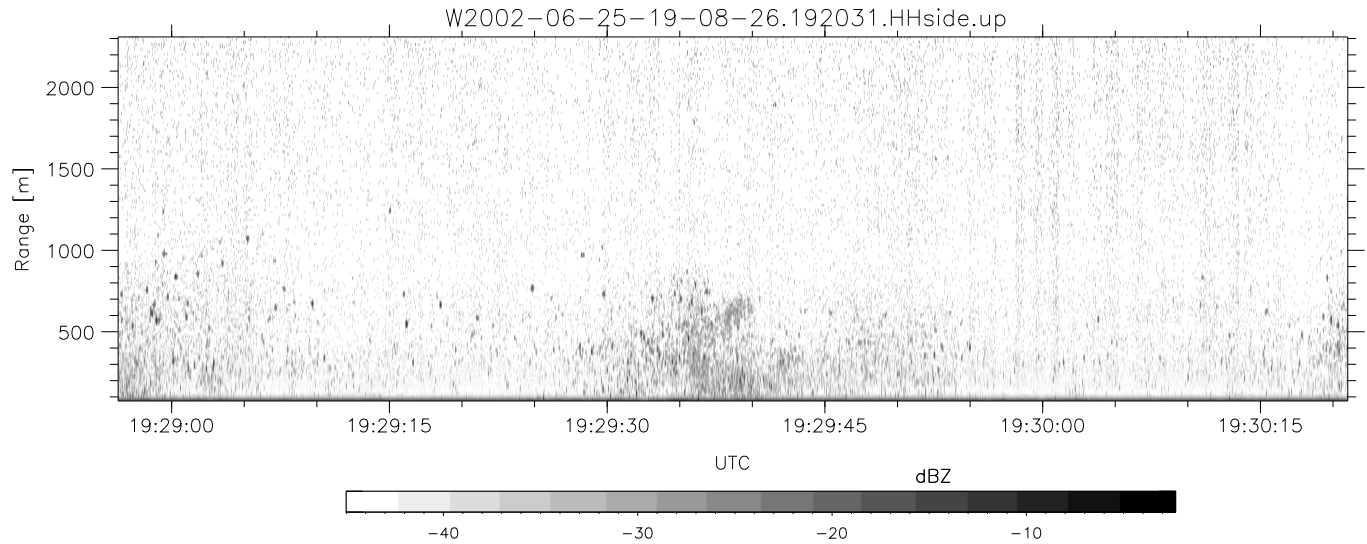
	Min	Max	Mean	Std	Varc%
hhN(dB)	-67.48	-65.12	-66.43	-78.51	6.2
vvN(dB)	-66.23	-63.90	-65.35	-77.84	5.6
hhL(dB)	-15.70	-5.54	-9.46	-15.97	22.3
vhL(dB)	-21.49	-7.32	-11.03	-15.13	38.9
ppN(m/s)	-15.80	15.80	0.07	8.96	
ppT(m/s)	-0.03	0.02	-0.00	0.01	
vh/hh(dB)	-NaN	1.10	-12.66	-7.26	346.
hnjmp(dB)	-1.39	1.28	-0.12	-11.72	6.9
vnjmp(dB)	-1.40	0.96	-0.13	-11.71	6.9



IHOP 2002 (dual-antenna config, modes 1,3,4,7) Data (cal: 49.0,50.0)

W2002-06-25-19-08-26 - SPPMAG
 IRIG:1,UTC: 19:08:10.33 to 19:30:29.68, Dur: 1339s
 TimeLngth: 1339.35s, TimeInt: 24ms (40.6pps)
 TimeCor=-13.0s, DSPDif(mn,min,mx):24,20,298
 PPS(min,max,std): 28,42,2.46
 Prof: 482 to 54918, NumProf(t/r): 54436/24314
 ProcTime/Recs: 19:20:31-19:30:29/30122-54435
 MxACQtime: 17ms; DRate: 97.3KB/s; Flags: 0, 0, 0
 Pulse: 275ns, IFfilt: 5.0MHz; ppPol: HH
 TxPol: H, PRF: 20 kHz
 Range: Delay 75m, Spacing 15m, Gates 150
 Ave. Pulses: 348, Rng/Prof Aspect@90m/s: 6.8

	Min	Max	Mean	Std	Varc%
hhN(dB)	-67.48	-65.12	-66.43	-78.51	6.2
vvN(dB)	-66.23	-63.90	-65.35	-77.84	5.6
hhL(dB)	-15.70	-5.54	-9.46	-15.97	22.3
vhL(dB)	-21.49	-7.32	-11.03	-15.13	38.9
ppN(m/s)	-15.80	15.80	0.07	8.96	
ppT(m/s)	-0.03	0.02	-0.00	0.01	
vh/hh(dB)	-NaN	1.10	-12.66	-7.26	346.
hnjmp(dB)	-1.39	1.28	-0.12	-11.72	6.9
vnjmp(dB)	-1.40	0.96	-0.13	-11.71	6.9



IHOP 2002 (dual-antenna config, modes 1,3,4,7) Data (cal: 49.0,50.0)

W2002-06-25-19-08-26 - SPPMAG	Min	Max	Mean	Std	Varc%	
IRIG:1,UTC: 19:08:10.33 to 19:30:29.68, Dur: 1339s	hhN(dB)	-67.48	-65.12	-66.43	-78.51	6.2
TimeLngth: 1339.35s, TimeInt: 24ms (40.6pps)	vvN(dB)	-66.23	-63.90	-65.35	-77.84	5.6
TimeCor=-13.0s, DSPDif(mn,min,mx):24,20,298	hhL(dB)	-15.70	-5.54	-9.46	-15.97	22.3
PPS(min,max,std): 28,42,2.46	vhL(dB)	-21.49	-7.32	-11.03	-15.13	38.9
Prof: 482 to 54918, NumProf(t/r): 54436/24314	ppN(m/s)	-15.80	15.80	0.07	8.96	
ProcTime/Recs: 19:20:31-19:30:29/30122-54435	ppT(m/s)	-0.03	0.02	-0.00	0.01	
MxACQtime: 17ms; DRate: 97.3KB/s; Flags: 0, 0, 0	vh/hh(dB)	-NaN	1.10	-12.66	-7.26	346.
Pulse: 275ns, IFfilt: 5.0MHz; ppPol: HH	hnjmp(dB)	-1.39	1.28	-0.12	-11.72	6.9
TxPol: H, PRF: 20 kHz	vnjmp(dB)	-1.40	0.96	-0.13	-11.71	6.9
Range: Delay 75m, Spacing 15m, Gates 150						
Ave. Pulses: 348, Rng/Prof Aspect@90m/s: 6.8						