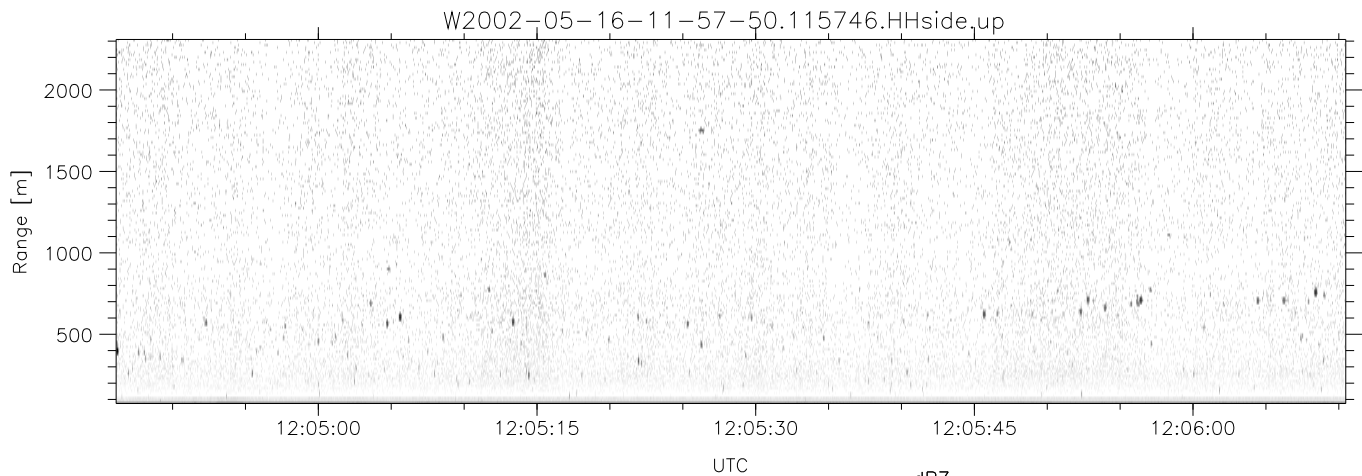
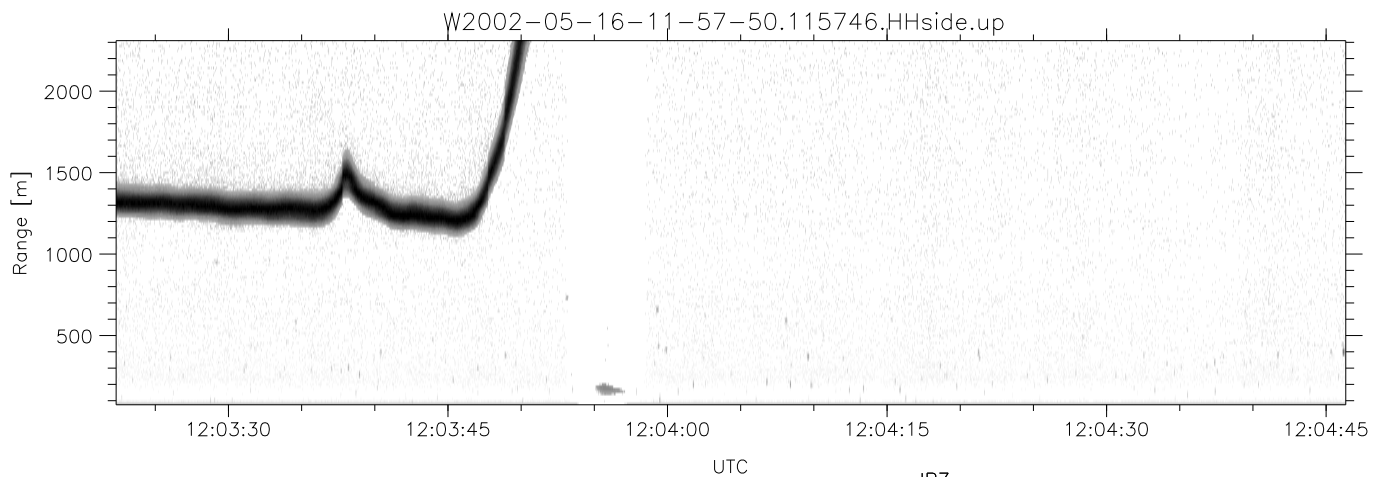
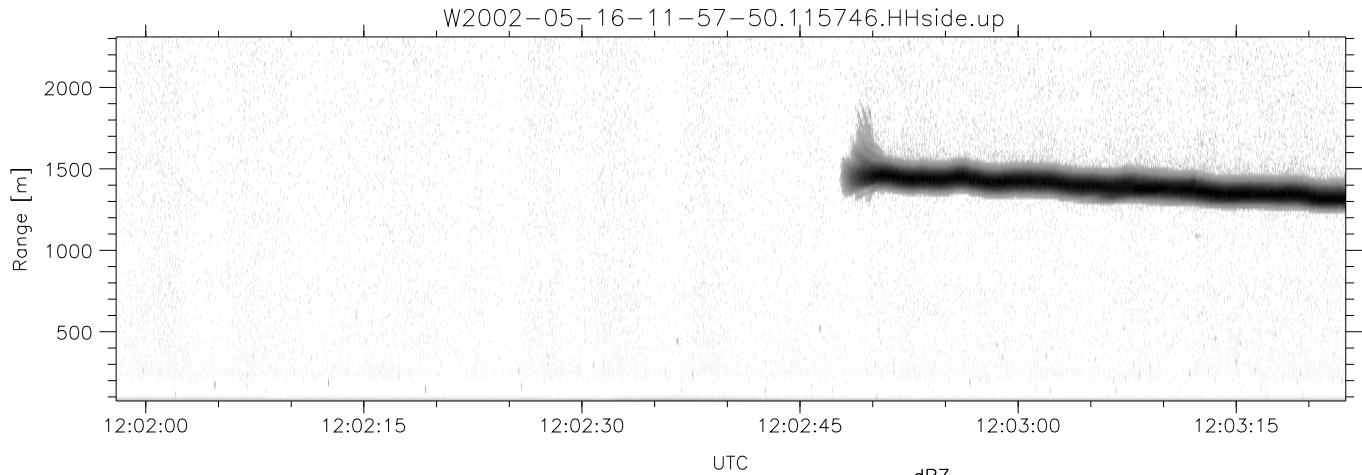


IHOP 2002 (dual-antenna config, modes 1,3,4,7) Data (cal: 49.0,50.0)

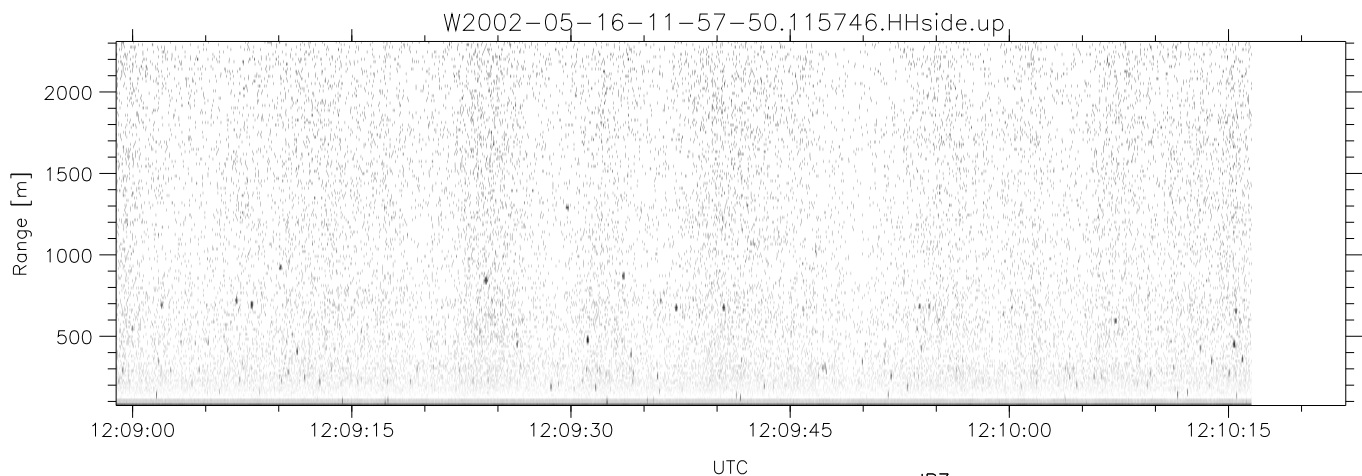
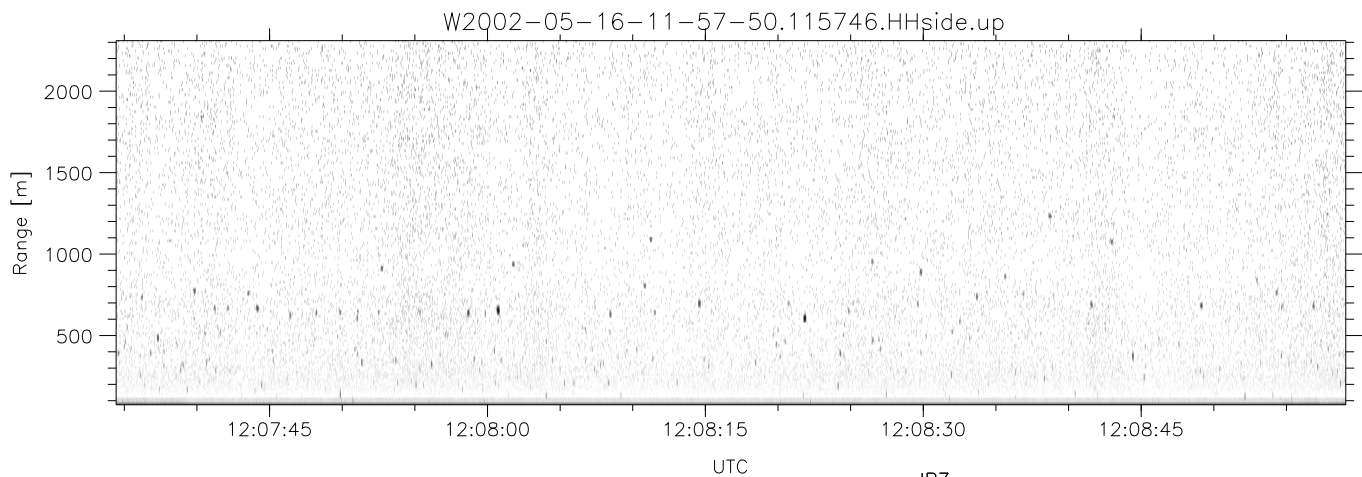
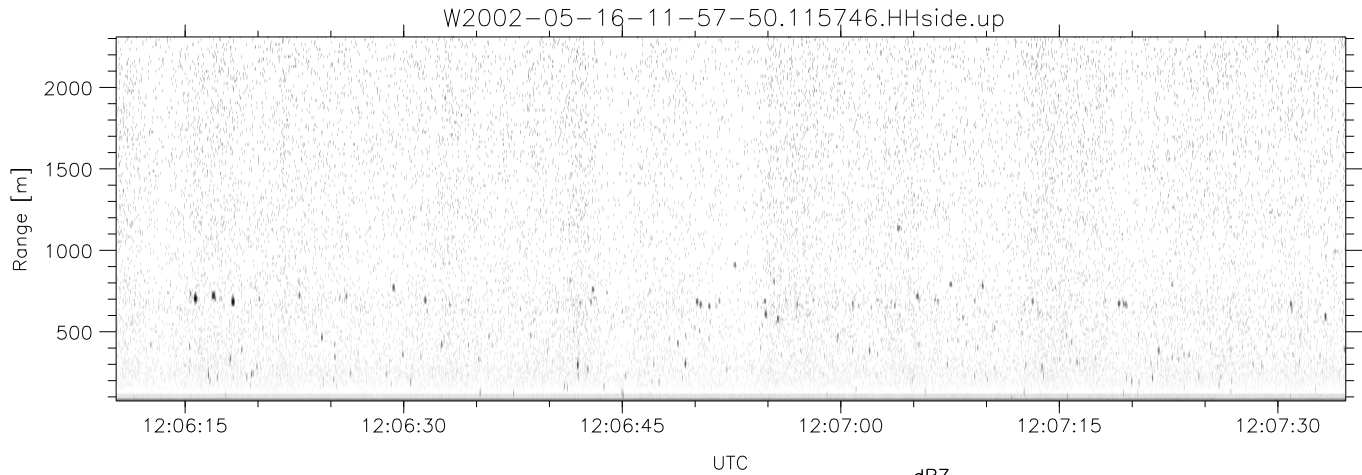
W2002-05-16-11-57-50 - SPPMAG	Min	Max	Mean	Std	Varc%	
IRIG:1, UTC: 11:57:46.15 to 12:21:59.26, Dur: 1453s	hhN(dB)	-67.37	-48.88	-66.13	-65.72	109.
TimeLngth: 1453.11s, TimeInt: 26ms (38.1pps)	vvN(dB)	-67.87	-66.00	-66.90	-79.59	5.4
TimeCor=-13.0s, DSPDif[ms]: mn=26,mx-min=310	hhL(dB)	-29.86	-15.63	-19.22	-24.36	30.7
PPS(min,max,std): 14,42,3.52	vhL(dB)	-37.23	-14.46	-19.87	-20.51	86.3
Prof: 761 to 56115, NumProf(t/r): 55354/28616	ppN(m/s)	-15.80	15.80	0.18	9.03	
ProcTime/Recs: 11:57:46-12:10:16/0-28615	ppT(m/s)	-0.05	0.02	-0.00	0.01	
MxACQtime: 17ms DRate: 91.2KB/s; Flags: 0, 0, 0	vh/hh(dB)	-NaN	-32.51	-53.68	-43.56	1028
Pulse: 275ns, IFfilt: 5.0MHz; ppPol: H	hnjmp(dB)	-1.68	3.37	0.13	-11.29	7.2
TxPol: H, PRF: 20 kHz	vnjmp(dB)	-0.96	1.21	0.14	-11.49	6.9
Range: Delay 75m, Spacing 15m, Gates 150						
Ave. Pulses: 348, Rng/Prof Aspect@90m/s: 6.3						



IHOP 2002 (dual-antenna config, modes 1,3,4,7) Data (cal: 49.0,50.0)

W2002-05-16-11-57-50 - SPPMAG
 IRIG:1, UTC: 11:57:46.15 to 12:21:59.26, Dur: 1453s
 TimeLngth: 1453.11s, TimeInt: 26ms (38.1pps)
 TimeCor=-13.0s, DSPDif[ms]: mn=26,mx-min=310
 PPS(min,max,std): 14,42,3.52
 Prof: 761 to 56115, NumProf(t/r): 55354/28616
 ProcTime/Recs: 11:57:46-12:10:16/0-28615
 MxACQtime: 17ms DRate: 91.2KB/s; Flags: 0, 0, 0
 Pulse: 275ns, IFfilt: 5.0MHz; ppPol: H
 TxPol: H, PRF: 20 kHz
 Range: Delay 75m, Spacing 15m, Gates 150
 Ave. Pulses: 348, Rng/Prof Aspect@90m/s: 6.3

	Min	Max	Mean	Std	Varc%
hhN(dB)	-67.37	-48.88	-66.13	-65.72	109.
vvN(dB)	-67.87	-66.00	-66.90	-79.59	5.4
hhL(dB)	-29.86	-15.63	-19.22	-24.36	30.7
vhL(dB)	-37.23	-14.46	-19.87	-20.51	86.3
ppN(m/s)	-15.80	15.80	0.18	9.03	
ppT(m/s)	-0.05	0.02	-0.00	0.01	
vh/hh(dB)	-NaN	-32.51	-53.68	-43.56	1028
hnjmp(dB)	-1.68	3.37	0.13	-11.29	7.2
vnjmp(dB)	-0.96	1.21	0.14	-11.49	6.9



IHOP 2002 (dual-antenna config, modes 1,3,4,7) Data (cal: 49.0,50.0)

W2002-05-16-11-57-50 - SPPMAG	Min	Max	Mean	Std	Varc%	
IRIG:1, UTC: 11:57:46.15 to 12:21:59.26, Dur: 1453s	hhN(dB)	-67.37	-48.88	-66.13	-65.72	109.
TimeLngth: 1453.11s, TimeInt: 26ms (38.1pps)	vvN(dB)	-67.87	-66.00	-66.90	-79.59	5.4
TimeCor=-13.0s, DSPDif[ms]: mn=26,mx-min=310	hhL(dB)	-29.86	-15.63	-19.22	-24.36	30.7
PPS(min,max,std): 14,42,3.52	vhL(dB)	-37.23	-14.46	-19.87	-20.51	86.3
Prof: 761 to 56115, NumProf(t/r): 55354/28616	ppN(m/s)	-15.80	15.80	0.18	9.03	
ProcTime/Recs: 11:57:46-12:10:16/0-28615	ppT(m/s)	-0.05	0.02	-0.00	0.01	
MxACQtime: 17ms DRate: 91.2KB/s; Flags: 0, 0, 0	vh/hh(dB)	-NaN	-32.51	-53.68	-43.56	1028
Pulse: 275ns, IFfilt: 5.0MHz; ppPol: H	hnjmp(dB)	-1.68	3.37	0.13	-11.29	7.2
TxPol: H, PRF: 20 kHz	vnjmp(dB)	-0.96	1.21	0.14	-11.49	6.9
Range: Delay 75m, Spacing 15m, Gates 150						
Ave. Pulses: 348, Rng/Prof Aspect@90m/s: 6.3						