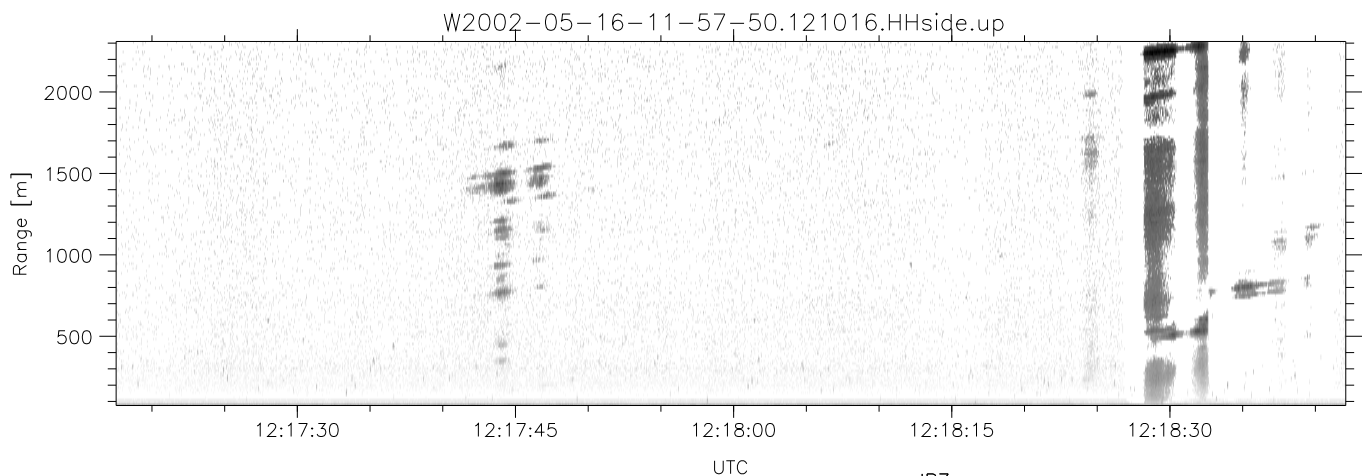
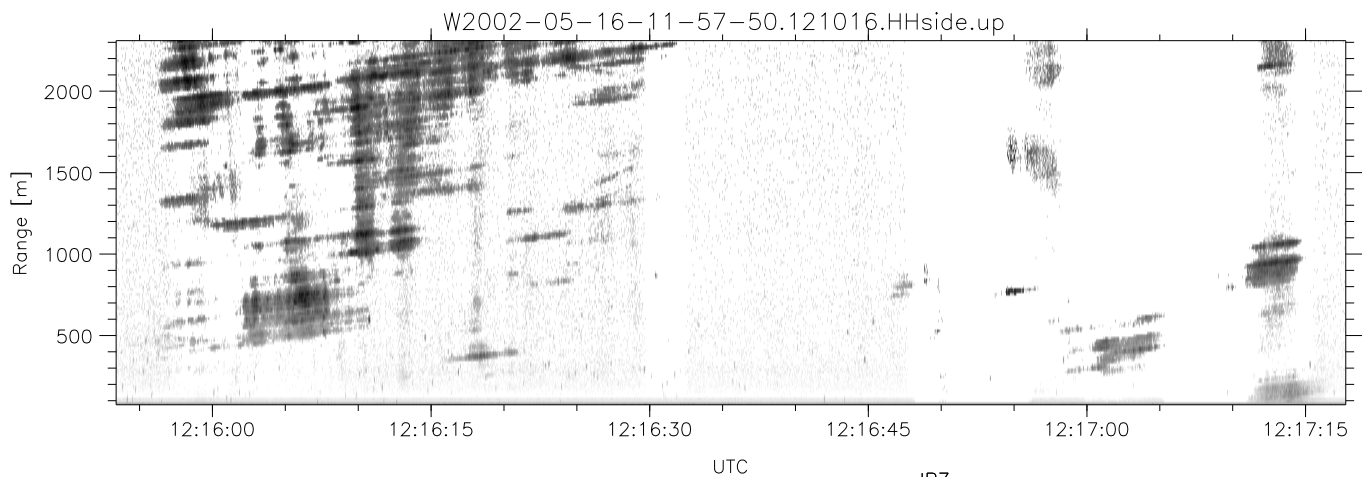
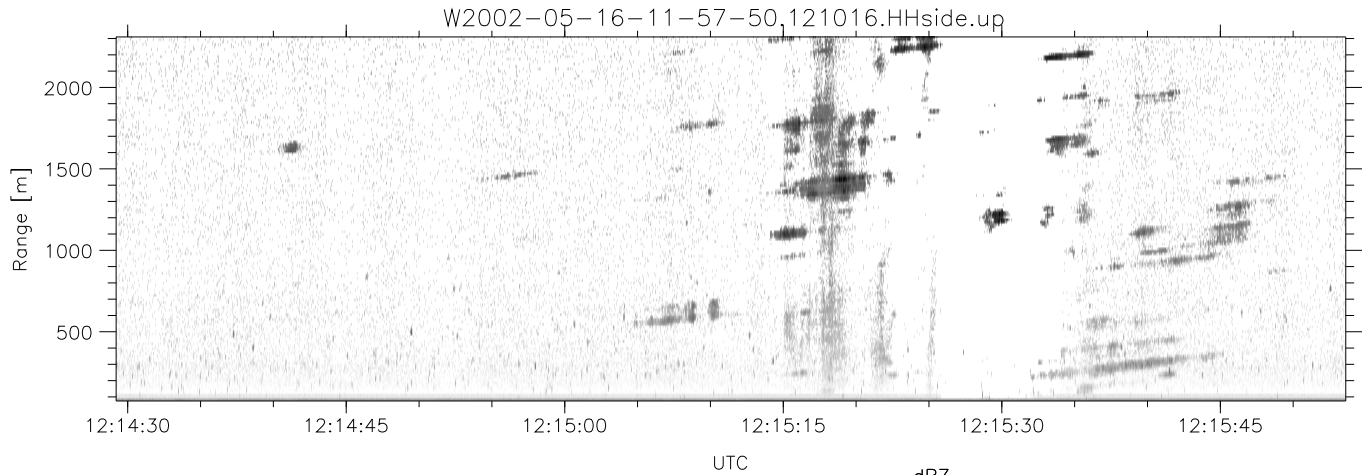


IHOP 2002 (dual-antenna config, modes 1,3,4,7) Data (cal: 49.0,50.0)

W2002-05-16-11-57-50 - SPPMAG
 IRIG:1, UTC: 11:57:46.15 to 12:21:59.26, Dur: 1453s
 TimeLngth: 1453.11s, TimeInt: 26ms (38.1pps)
 TimeCor=-13.0s, DSPDif[ms]: mn=26,mx-min=307
 PPS(min,max,std): 29,42,3.53
 Prof: 761 to 56115, NumProf(t/r): 55354/26738
 ProcTime/Recs: 12:10:16-12:21:59/28616-55353
 MxACQtime: 17ms DRate: 91.2KB/s; Flags: 0, 0, 0
 Pulse: 275ns, IFfilt: 5.0MHz; ppPol: H
 TxPol: H, PRF: 20 kHz
 Range: Delay 75m, Spacing 15m, Gates 150
 Ave. Pulses: 348, Rng/Prof Aspect@90m/s: 6.3

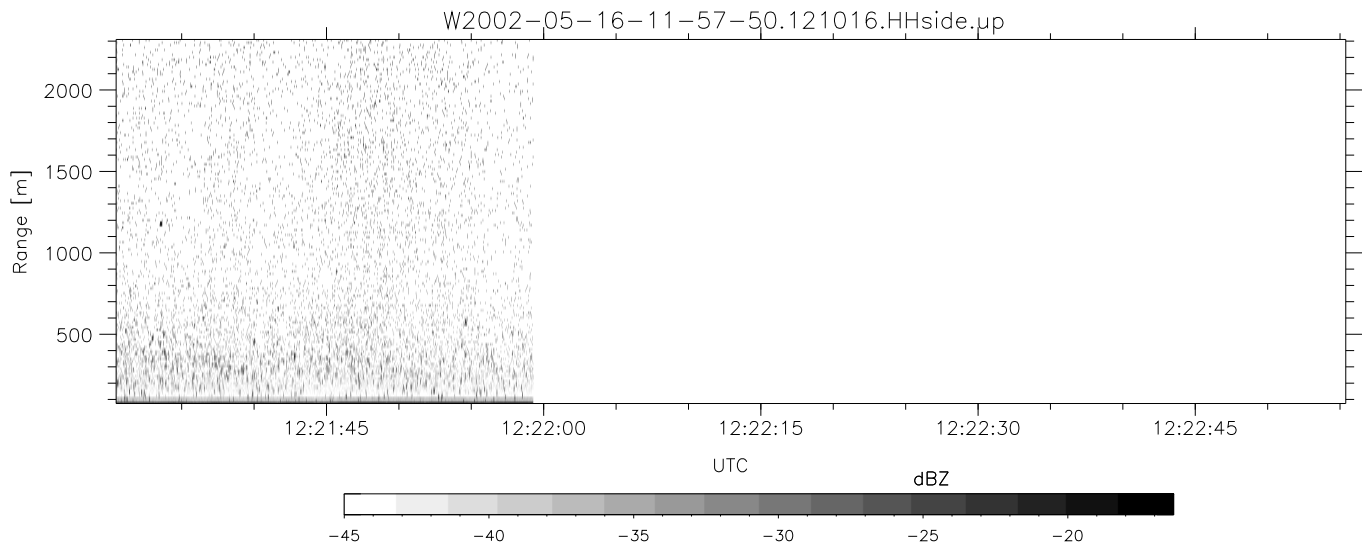
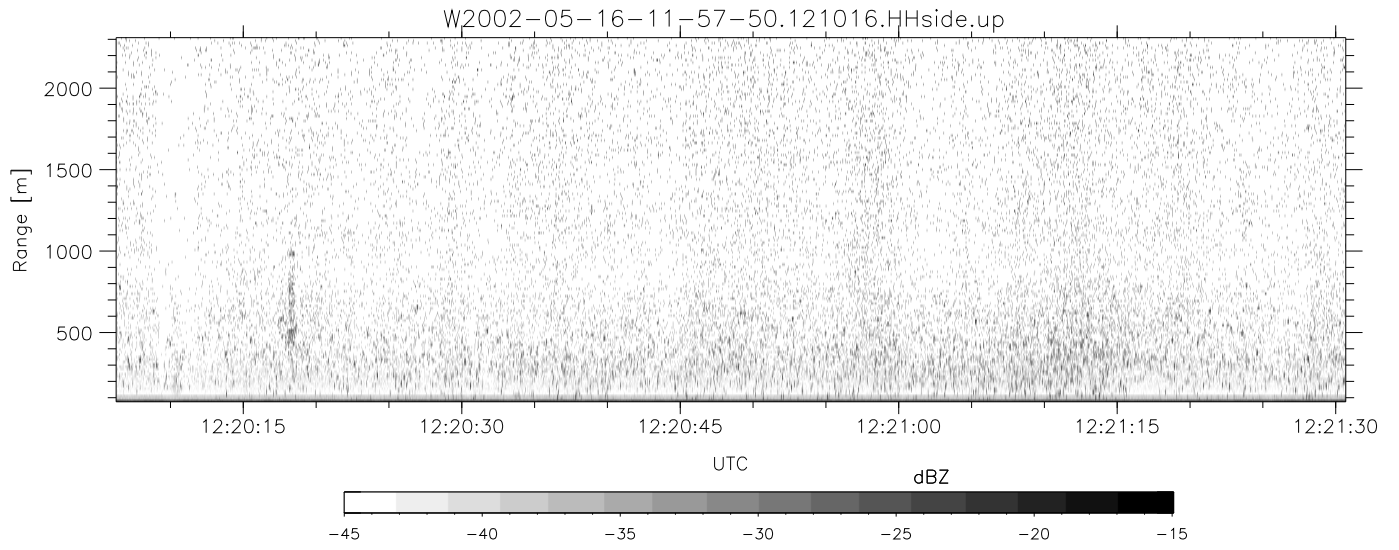
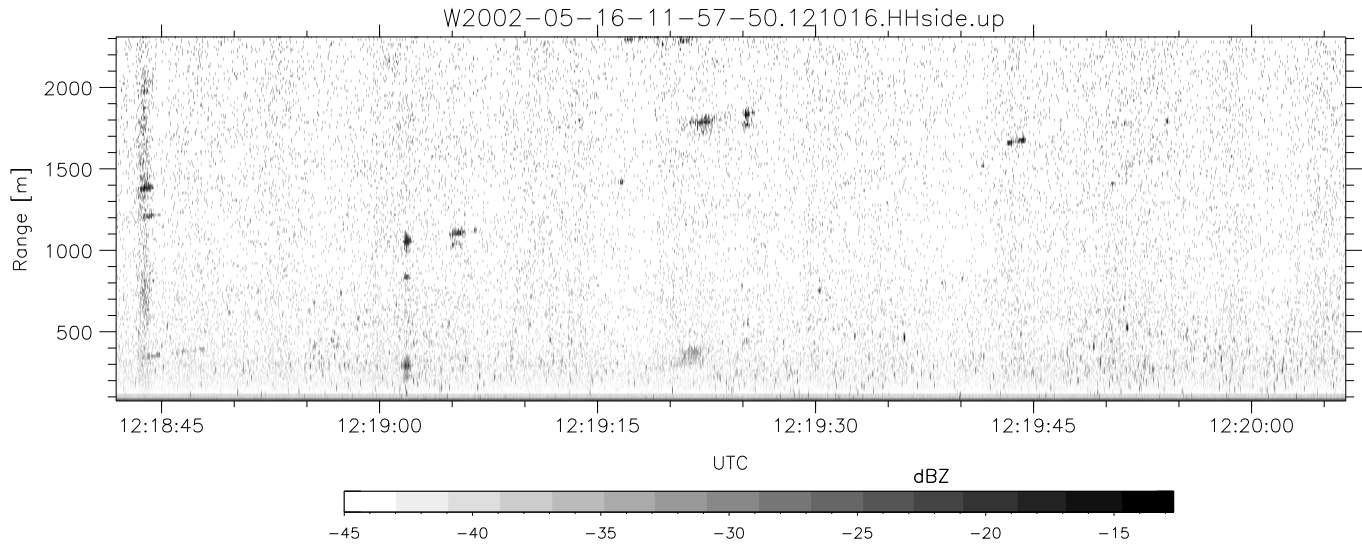
	Min	Max	Mean	Std	Varc%
hhN(dB)	-67.38	-47.53	-65.42	-63.09	171.
vvN(dB)	-68.18	-66.27	-67.13	-79.88	5.3
hhL(dB)	-25.07	-16.58	-19.76	-27.27	17.7
vhL(dB)	-22.32	-16.73	-19.29	-26.77	17.9
ppN(m/s)	-15.80	15.80	-1.14	9.09	
ppT(m/s)	-0.03	0.03	0.00	0.01	
vh/hh(dB)	-NaN	-34.41	-NaN	-38.85	-784
hnjmp(dB)	-4.29	5.94	0.14	-10.07	9.5
vnjmp(dB)	-0.96	1.41	0.15	-11.44	6.9



IHOP 2002 (dual-antenna config, modes 1,3,4,7) Data (cal: 49.0,50.0)

W2002-05-16-11-57-50 - SPPMAG
 IRIG:1, UTC: 11:57:46.15 to 12:21:59.26, Dur: 1453s
 TimeLngth: 1453.11s, TimeInt: 26ms (38.1pps)
 TimeCor=-13.0s, DSPDif[ms]: mn=26,mx-min=307
 PPS(min,max,std): 29,42,3.53
 Prof: 761 to 56115, NumProf(t/r): 55354/26738
 ProcTime/Recs: 12:10:16-12:21:59/28616-55353
 MxACQtime: 17ms DRate: 91.2KB/s; Flags: 0, 0, 0
 Pulse: 275ns, IFfilt: 5.0MHz; ppPol: H
 TxPol: H, PRF: 20 kHz
 Range: Delay 75m, Spacing 15m, Gates 150
 Ave. Pulses: 348, Rng/Prof Aspect@90m/s: 6.3

	Min	Max	Mean	Std	Varc%
hhN(dB)	-67.38	-47.53	-65.42	-63.09	171.
vvN(dB)	-68.18	-66.27	-67.13	-79.88	5.3
hhL(dB)	-25.07	-16.58	-19.76	-27.27	17.7
vhL(dB)	-22.32	-16.73	-19.29	-26.77	17.9
ppN(m/s)	-15.80	15.80	-1.14	9.09	
ppT(m/s)	-0.03	0.03	0.00	0.01	
vh/hh(dB)	-NaN	-34.41	-NaN	-38.85	-784
hnjmp(dB)	-4.29	5.94	0.14	-10.07	9.5
vnjmp(dB)	-0.96	1.41	0.15	-11.44	6.9



IHOP 2002 (dual-antenna config, modes 1,3,4,7) Data (cal: 49.0,50.0)

W2002-05-16-11-57-50 - SPPMAG
 IRIG:1, UTC: 11:57:46.15 to 12:21:59.26, Dur: 1453s
 TimeLngth: 1453.11s, TimeInt: 26ms (38.1pps)
 TimeCor=-13.0s, DSPDif[ms]: mn=26,mx-min=307
 PPS(min,max,std): 29,42,3.53
 Prof: 761 to 56115, NumProf(t/r): 55354/26738
 ProcTime/Recs: 12:10:16-12:21:59/28616-55353
 MxACQtime: 17ms DRate: 91.2KB/s; Flags: 0, 0, 0
 Pulse: 275ns, IFfilt: 5.0MHz; ppPol: H
 TxPol: H, PRF: 20 kHz
 Range: Delay 75m, Spacing 15m, Gates 150
 Ave. Pulses: 348, Rng/Prof Aspect@90m/s: 6.3

	Min	Max	Mean	Std	Varc%
hhN(dB)	-67.38	-47.53	-65.42	-63.09	171.
vvN(dB)	-68.18	-66.27	-67.13	-79.88	5.3
hhL(dB)	-25.07	-16.58	-19.76	-27.27	17.7
vhL(dB)	-22.32	-16.73	-19.29	-26.77	17.9
ppN(m/s)	-15.80	15.80	-1.14	9.09	
ppT(m/s)	-0.03	0.03	0.00	0.01	
vh/hh(dB)	-NaN	-34.41	-NaN	-38.85	-784
hnjmp(dB)	-4.29	5.94	0.14	-10.07	9.5
vnjmp(dB)	-0.96	1.41	0.15	-11.44	6.9