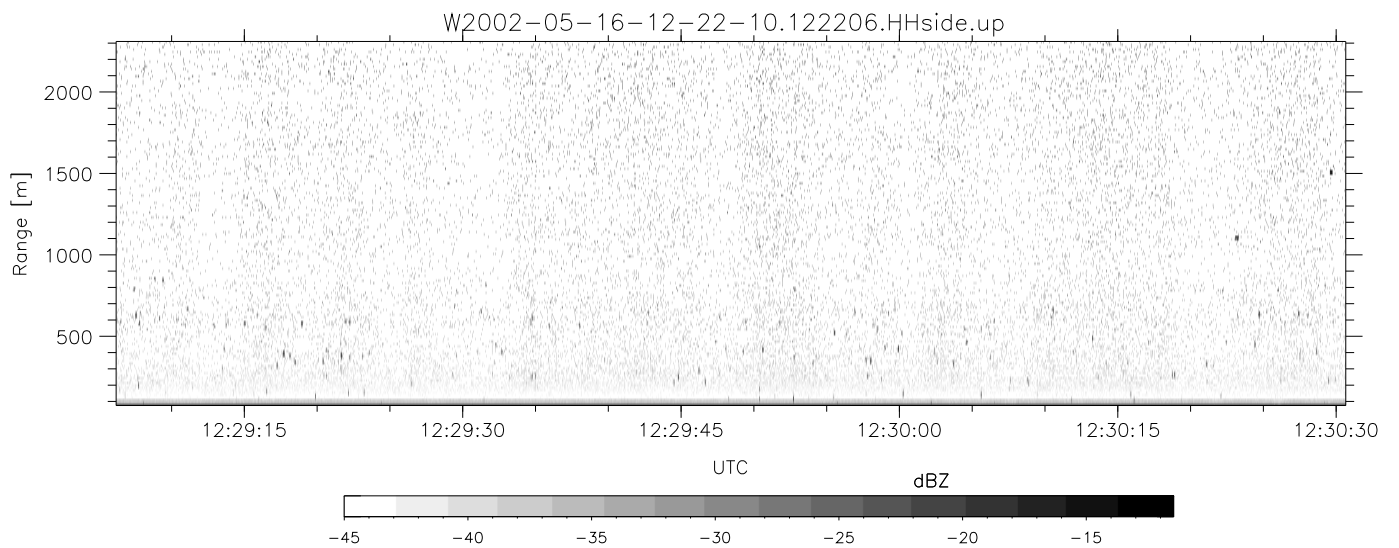
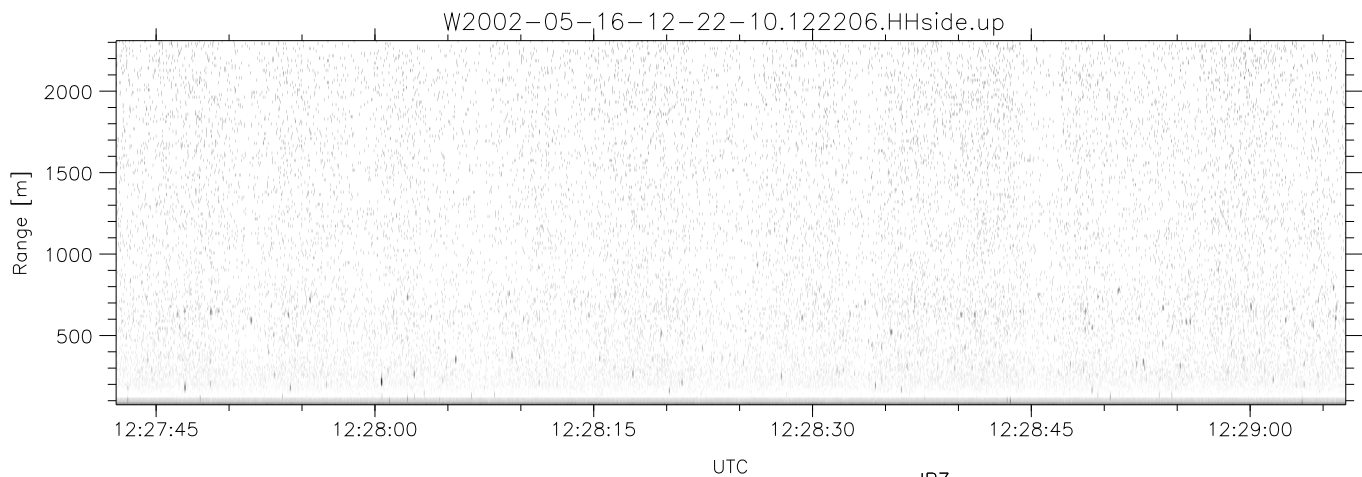
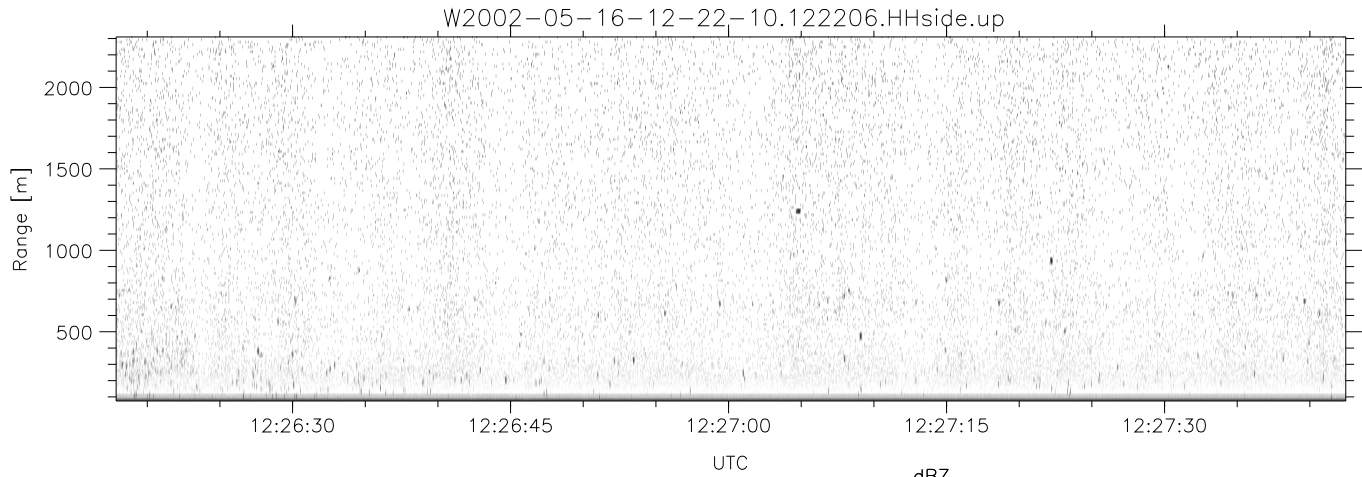


IHOP 2002 (dual-antenna config, modes 1,3,4,7) Data (cal: 49.0,50.0)

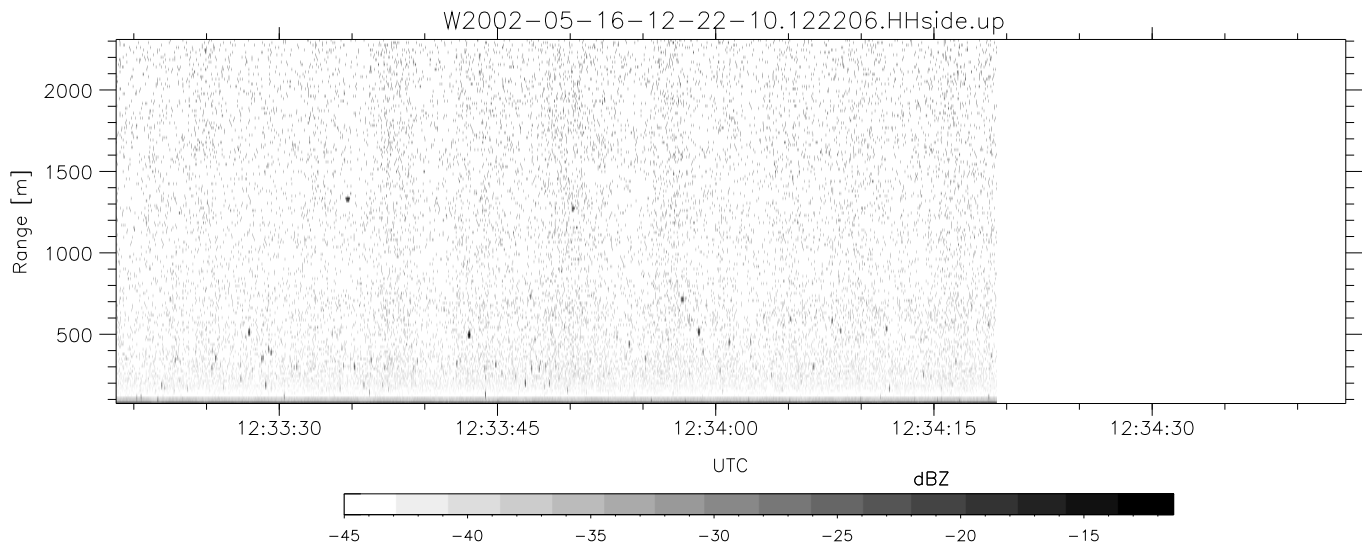
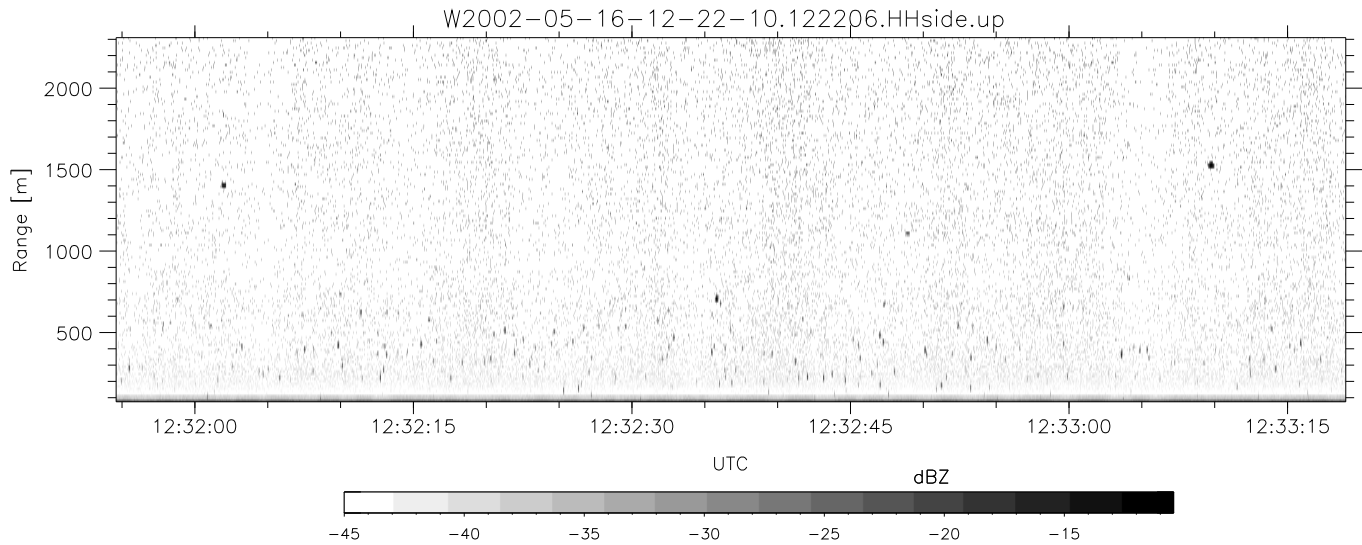
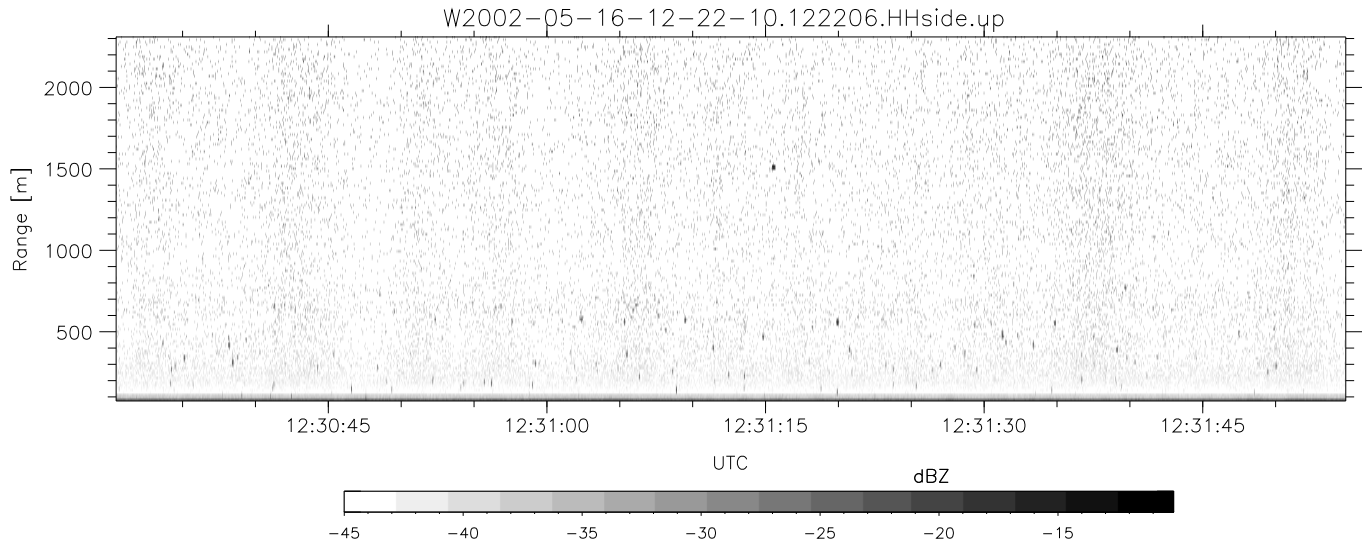
W2002-05-16-12-22-10 - SPPMAG
 IRIG:1, UTC: 12:22:06.22 to 12:39:22.4, Dur: 1036s
 TimeLngth: 1035.82s, TimeInt: 26ms (38.0pps)
 TimeCor=-13.0s, DSPDif[ms]: mn=26,mx-min=262
 PPS(min,max,std): 15,42,3.43
 Prof: 56405 to 95740, NumProf(t/r): 39335/27863
 ProcTime/Recs: 12:22:06-12:34:19/0-27862
 MxACQtime: 17ms DRate: 90.9KB/s; Flags: 0, 0, 0
 Pulse: 275ns, IFfilt: 5.0MHz; ppPol: H
 TxPol: H, PRF: 20 kHz
 Range: Delay 75m, Spacing 15m, Gates 150
 Ave. Pulses: 348, Rng/Prof Aspect@90m/s: 6.3

	Min	Max	Mean	Std	Varc%
hhN(dB)	-67.73	-50.22	-66.04	-64.78	133.
vvN(dB)	-68.48	-66.45	-67.35	-80.06	5.4
hhL(dB)	-23.45	-17.72	-20.17	-27.51	18.4
vhL(dB)	-25.37	-16.84	-20.55	-25.20	34.3
ppN(m/s)	-15.80	15.80	0.47	9.06	
ppT(m/s)	-0.03	0.03	-0.00	0.01	
vh/hh(dB)	-NaN	-13.32	-48.67	-35.99	1856
hnjmp(dB)	-3.69	4.70	0.14	-10.65	8.3
vnjmp(dB)	-1.11	1.48	0.15	-11.42	7.0



IHOP 2002 (dual-antenna config, modes 1,3,4,7) Data (cal: 49.0,50.0)

W2002-05-16-12-22-10 - SPPMAG	Min	Max	Mean	Std	Varc%	
IRIG:1, UTC: 12:22:06.22 to 12:39:22.4, Dur: 1036s	hhN (dB)	-67.73	-50.22	-66.04	-64.78	133.
TimeLngth: 1035.82s, TimeInt: 26ms (38.0pps)	vvN (dB)	-68.48	-66.45	-67.35	-80.06	5.4
TimeCor=-13.0s, DSPDif[ms]: mn=26,mx-min=262	hhL (dB)	-23.45	-17.72	-20.17	-27.51	18.4
PPS(min,max,std): 15,42,3.43	vhL (dB)	-25.37	-16.84	-20.55	-25.20	34.3
Prof: 56405 to 95740, NumProf(t/r): 39335/27863	ppN (m/s)	-15.80	15.80	0.47	9.06	
ProcTime/Recs: 12:22:06-12:34:19/0-27862	ppT (m/s)	-0.03	0.03	-0.00	0.01	
MxACQtime: 17ms DRate: 90.9KB/s; Flags: 0, 0, 0	vh/hh (dB)	-NaN	-13.32	-48.67	-35.99	1856
Pulse: 275ns, IFfilt: 5.0MHz; ppPol: H	hn_jmp (dB)	-3.69	4.70	0.14	-10.65	8.3
TxPol: H, PRF: 20 kHz	vn_jmp (dB)	-1.11	1.48	0.15	-11.42	7.0
Range: Delay 75m, Spacing 15m, Gates 150						
Ave. Pulses: 348, Rng/Prof Aspect@90m/s: 6.3						



IHOP 2002 (dual-antenna config, modes 1,3,4,7) Data (cal: 49.0,50.0)

W2002-05-16-12-22-10 - SPPMAG
 IRIG:1, UTC: 12:22:06.22 to 12:39:22.4, Dur: 1036s
 TimeLngth: 1035.82s, TimeInt: 26ms (38.0pps)
 TimeCor=-13.0s, DSPDif[ms]: mn=26,mx-min=262
 PPS(min,max,std): 15,42,3.43
 Prof: 56405 to 95740, NumProf(t/r): 39335/27863
 ProcTime/Recs: 12:22:06-12:34:19/0-27862
 MxACQtime: 17ms DRate: 90.9KB/s; Flags: 0, 0, 0
 Pulse: 275ns, IFfilt: 5.0MHz; ppPol: H
 TxPol: H, PRF: 20 kHz
 Range: Delay 75m, Spacing 15m, Gates 150
 Ave. Pulses: 348, Rng/Prof Aspect@90m/s: 6.3

	Min	Max	Mean	Std	Varc%
hhN(dB)	-67.73	-50.22	-66.04	-64.78	133.
vvN(dB)	-68.48	-66.45	-67.35	-80.06	5.4
hhL(dB)	-23.45	-17.72	-20.17	-27.51	18.4
vhL(dB)	-25.37	-16.84	-20.55	-25.20	34.3
ppN(m/s)	-15.80	15.80	0.47	9.06	
ppT(m/s)	-0.03	0.03	-0.00	0.01	
vh/hh(dB)	-NaN	-13.32	-48.67	-35.99	1856
hnjmp(dB)	-3.69	4.70	0.14	-10.65	8.3
vnjmp(dB)	-1.11	1.48	0.15	-11.42	7.0