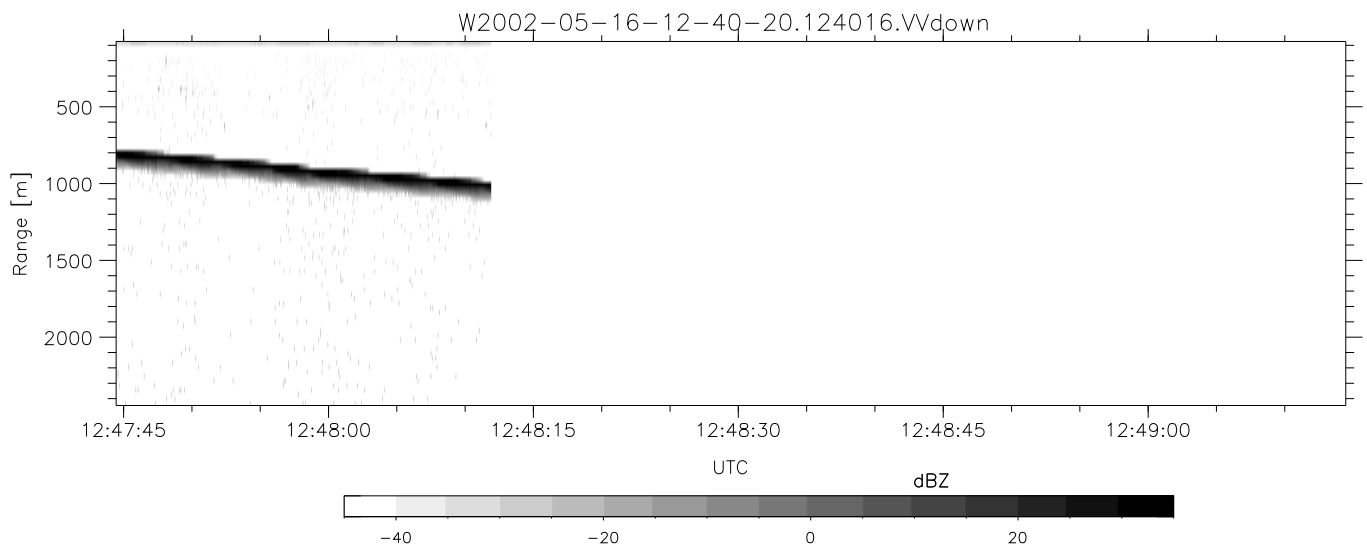
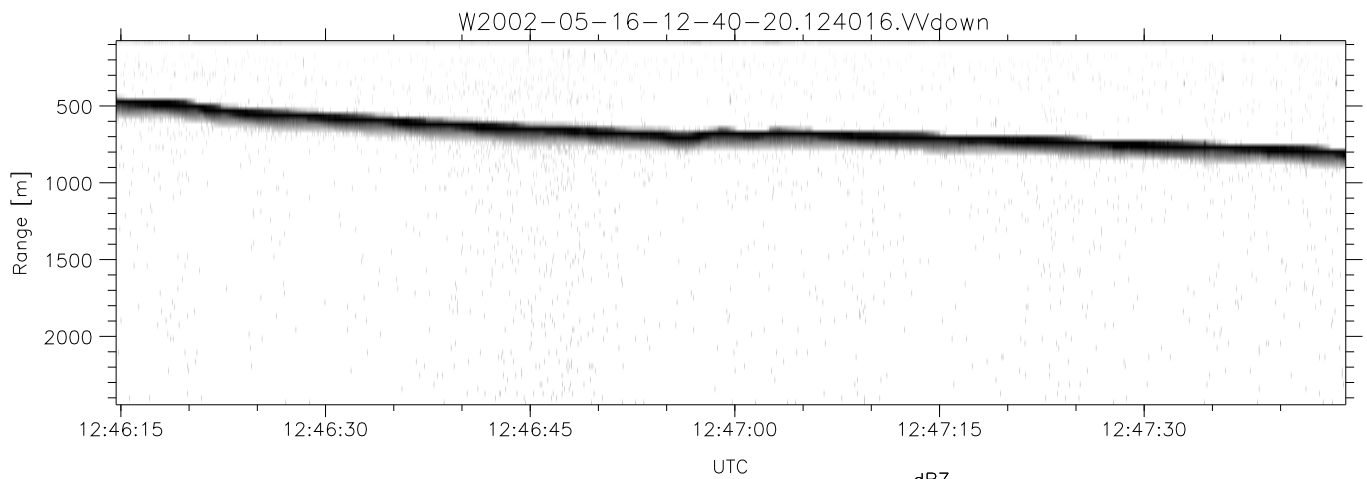
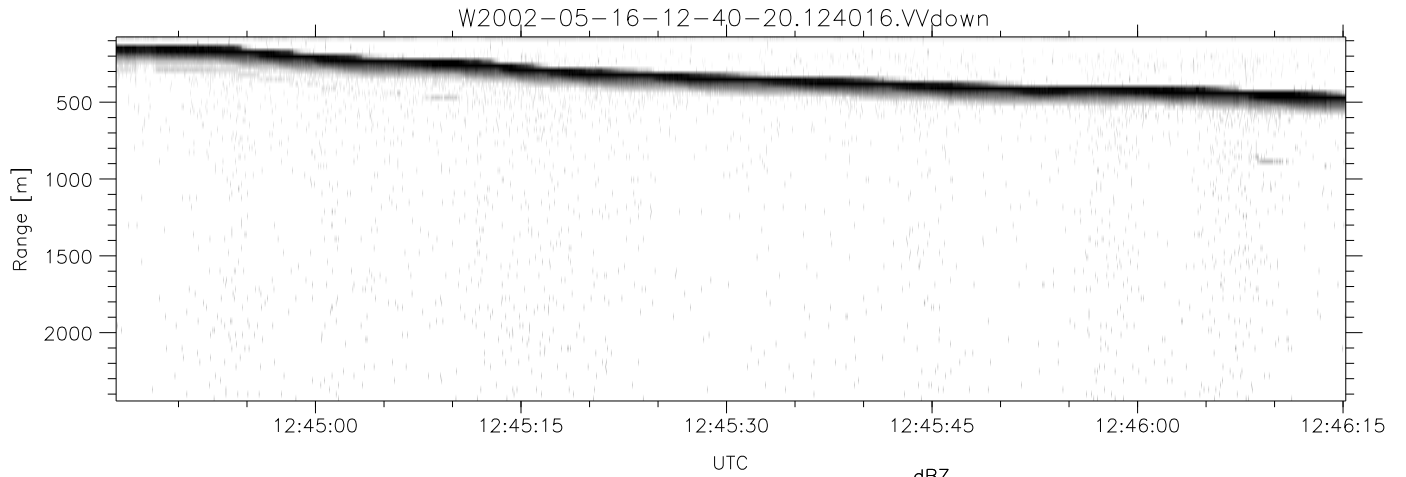


IHOP 2002 (dual-antenna config, modes 1,3,4,7) Data (cal: 49.0,50.0)

W2002-05-16-12-40-20 - PPMAG4  
 IRIG:1, UTC: 12:40:16.32 to 12:48:11.88, Dur: 475s  
 TimeLngth: 475.56s, TimeInt: 43ms (23.0pps)  
 TimeCor=-13.0s, DSPDif[ms]: mn=43,mx-min=636  
 PPS(min,max,std): 10,29,2.47  
 Prof: 13 to 10970, NumProf(t/r): 10957/10957  
 MxACQtime: 43ms DRate: 103.8KB/s; Flags: 0, 0, 0  
 Pulse: 275ns, IFfilt: 5.0MHz; ppPol: HH HV W  
 TxPol: HHVV, PRF: 20 10 20 10 kHz  
 Range: Delay 75m, Spacing 30m, Gates 80  
 Ave. Pulses: 108, Rng/Prof Aspect@90m/s: 7.7

	Min	Max	Mean	Std	Varc%
hhN(dB)	-68.18	-65.20	-66.71	-76.98	9.4
vvN(dB)	-69.19	-66.11	-67.55	-77.97	9.1
hhL(dB)	-25.20	-15.71	-20.89	-26.26	29.0
vvL(dB)	-32.40	-19.62	-25.91	-27.62	67.3
ppN(m/s)	-12.31	12.22	-0.03	4.14	
ppT(m/s)	-97.24	96.54	-0.22	32.68	
hh/vv(dB)	-NaN	92.80	48.15	75.53	5468
vh/hh(dB)	-NaN	-33.46	-52.56	-43.43	819.
hv/vv(dB)	-NaN	-26.77	-50.37	-44.92	350.
hnjmp(dB)	-1.88	2.26	0.17	-8.79	12.7
vnjmp(dB)	-1.84	2.00	0.18	-8.81	12.6



IHOP 2002 (dual-antenna config, modes 1,3,4,7) Data (cal: 49.0,50.0)

W2002-05-16-12-40-20 - PPMAG4  
 IRIG:1, UTC: 12:40:16.32 to 12:48:11.88, Dur: 475s  
 TimeLngth: 475.56s, TimeInt: 43ms (23.0pps)  
 TimeCor=-13.0s, DSPDif[ms]: mn=43,mx-min=636  
 PPS(min,max,std): 10,29,2.47  
 Prof: 13 to 10970, NumProf(t/r): 10957/10957  
 MxACQtime: 43ms DRate: 103.8KB/s; Flags: 0, 0, 0  
 Pulse: 275ns, IFfilt: 5.0MHz; ppPol: HH HV VV  
 TxPol: HHVV, PRF: 20 10 20 10 kHz  
 Range: Delay 75m, Spacing 30m, Gates 80  
 Ave. Pulses: 108, Rng/Prof Aspect@90m/s: 7.7

	Min	Max	Mean	Std	Varc%
hhN(dB)	-68.18	-65.20	-66.71	-76.98	9.4
vvN(dB)	-69.19	-66.11	-67.55	-77.97	9.1
hhL(dB)	-25.20	-15.71	-20.89	-26.26	29.0
vvL(dB)	-32.40	-19.62	-25.91	-27.62	67.3
ppN(m/s)	-12.31	12.22	-0.03	4.14	
ppT(m/s)	-97.24	96.54	-0.22	32.68	
hh/vv(dB)	-NaN	92.80	48.15	75.53	5468
vh/hh(dB)	-NaN	-33.46	-52.56	-43.43	819.
hv/vv(dB)	-NaN	-26.77	-50.37	-44.92	350.
hh_jmp(dB)	-1.88	2.26	0.17	-8.79	12.7
vv_jmp(dB)	-1.84	2.00	0.18	-8.81	12.6