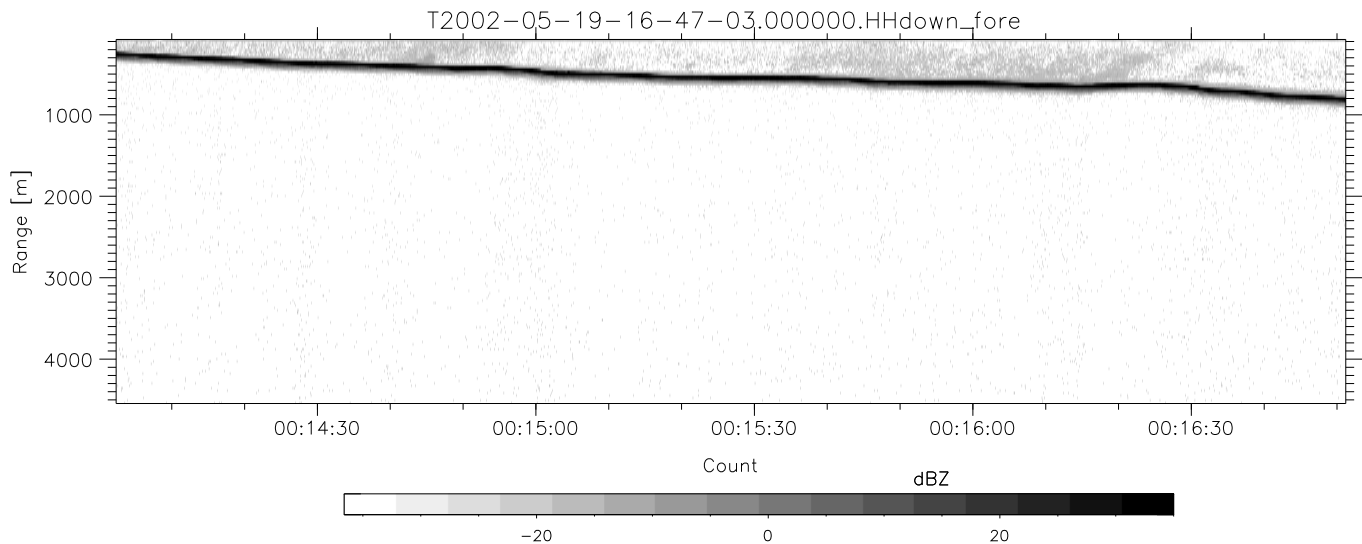
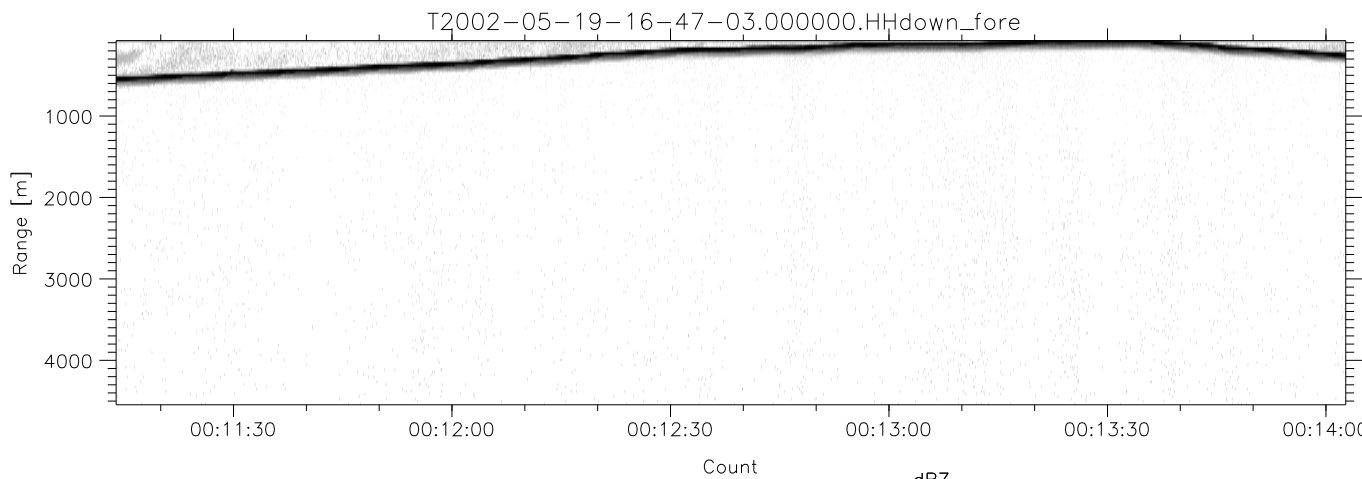
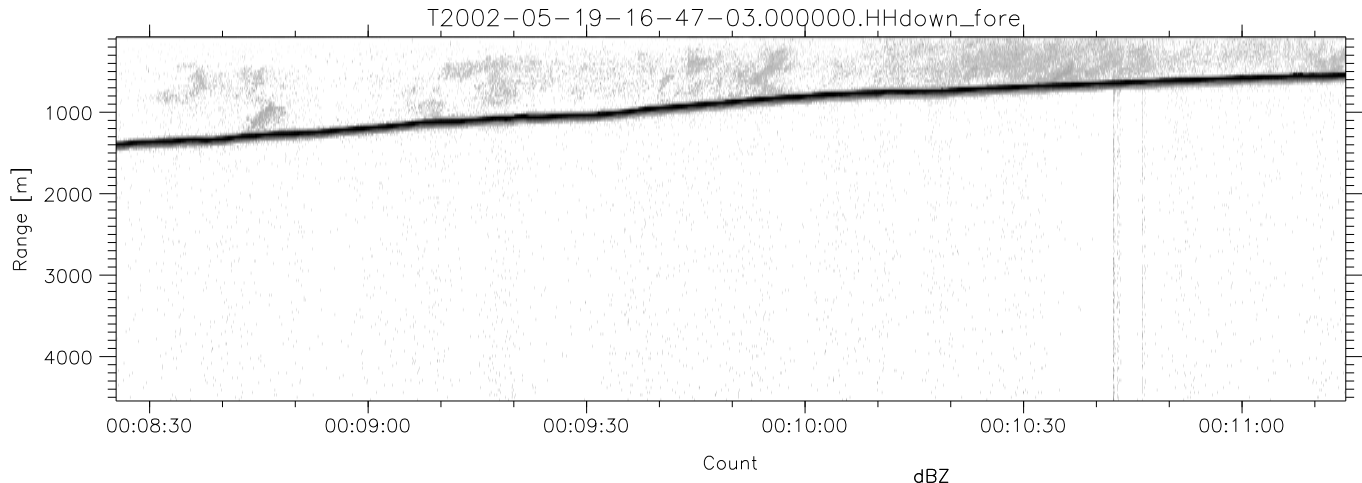


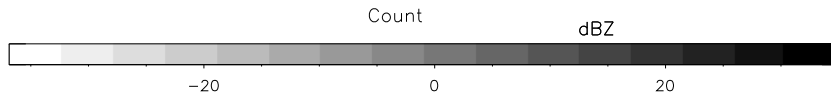
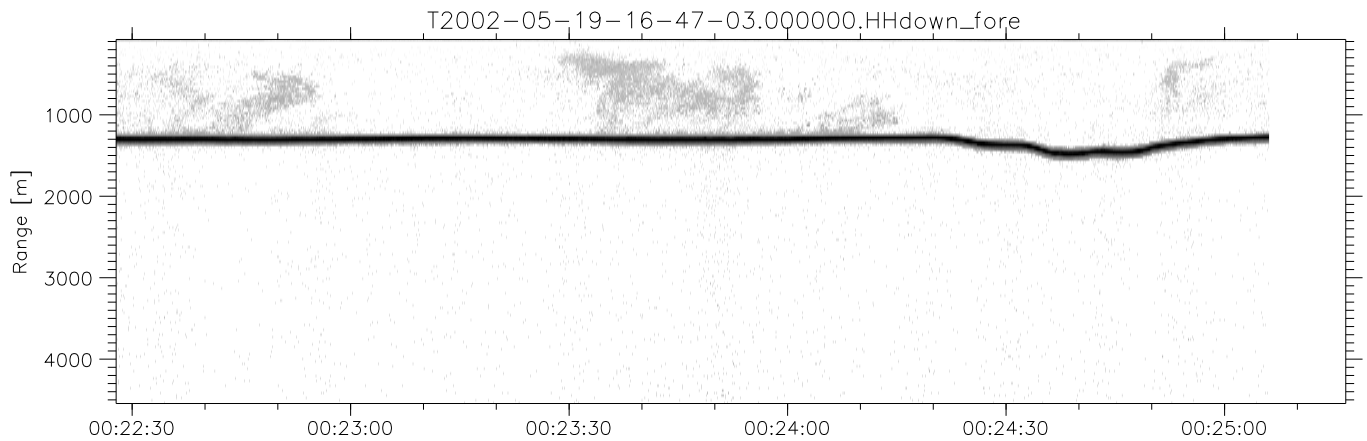
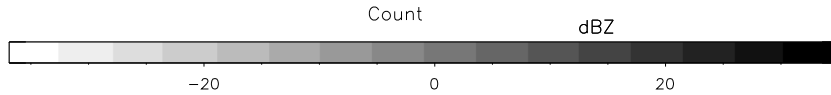
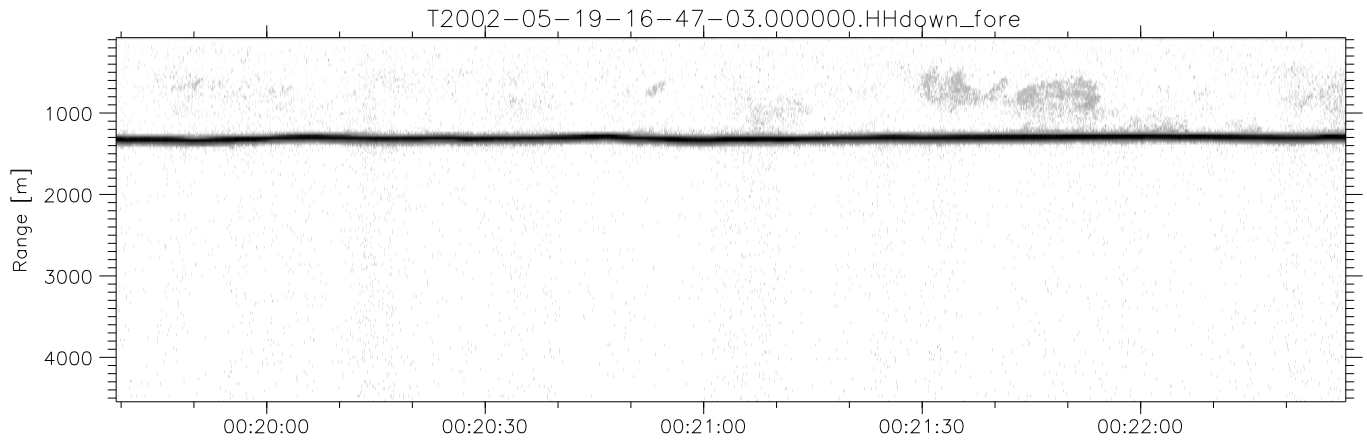
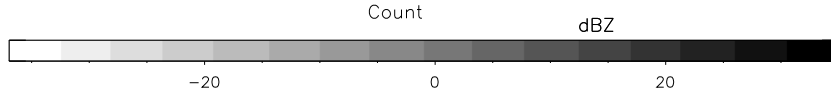
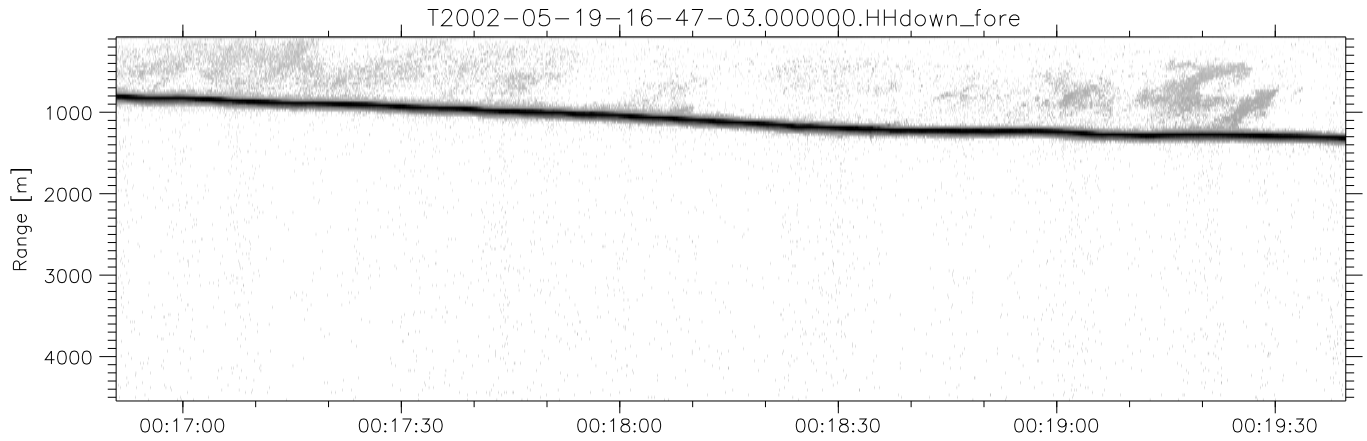
IHOP 2002 (dual-antenna config, modes 1,3,4,7) Data (cal: 55.0,50.0)

T2002-05-19-16-47-03 - PPMAG4	Min	Max	Mean	Std	Varc%	
IRIG:-2,Count: 00:00:00.0 to 00:41:30.76, Dur: 2490s	hhN(dB)	-67.99	-63.48	-65.40	-74.59	12.1
TimeLngth: 2490.76s, TimeInt: 40ms (25.0pps)	vvN(dB)	-69.04	-64.08	-66.41	-75.47	12.4
TimeCor=0.0s, DSPDif[ms]: mn=40,mx-min=0	hhL(dB)	-31.33	-9.51	-16.46	-17.66	75.9
PPS(min,max,std): 25,26,0.03	vvL(dB)	-30.77	-7.52	-13.51	-14.97	71.4
Prof: 694 to 62964, NumProf(t/r): 62270/37653	ppN(m/s)	-12.66	12.94	0.03	4.17	
ProcTime/Recs: 00:00:00-00:25:06/0-37652	ppT(m/s)	-99.99	102.22	0.27	32.97	
MxAcQtime: 22ms; DRate: 208.3KB/s; Flags: 0, 0, 1	hh/vv(dB)	-NaN	89.77	-NaN	78.08	-286
Pulse: 275ns, IFilt: 5.0MHz; ppPol: HH HV VV	vh/hh(dB)	-NaN	-5.83	-39.07	-25.73	2161
TxPol: HHVV, PRF: 20 10 20 10 kHz	hv/vv(dB)	-NaN	-13.17	-39.60	-31.02	721.
Range: Delay 75m, Spacing 30m, Gates 150	hnjmp(dB)	-3.05	2.75	-0.06	-7.73	17.1
Ave. Pulses: 56, Rng/Prof Aspect@90m/s: 8.3	vnjmp(dB)	-3.43	2.62	-0.04	-7.64	17.4



IHOP 2002 (dual-antenna config, modes 1,3,4,7) Data (cal: 55.0,50.0)

T2002-05-19-16-47-03 - PPMAG4						
IRIG:-2,Count: 00:00:00.0 to 00:41:30.76, Dur: 2490s	hhN(dB)	Min	Max	Mean	Std	Varc%
TimeLngth: 2490.76s, TimeInt: 40ms (25.0pps)	vvN(dB)	-67.99	-63.48	-65.40	-74.59	12.1
TimeCor=0.0s, DSPDif[ms]: mn=40,mx-min=0	hhL(dB)	-69.04	-64.08	-66.41	-75.47	12.4
PPS(min,max,std): 25,26,0.03	vvL(dB)	-31.33	-9.51	-16.46	-17.66	75.9
Prof: 694 to 62964, NumProf(t/r): 62270/37653	ppT(m/s)	-30.77	-7.52	-13.51	-14.97	71.4
ProcTime/Recs: 00:00:00-00:25:06/0-37652	ppN(m/s)	-12.66	12.94	0.03	4.17	
MxACQtime: 22ms; DRate: 208.3KB/s; Flags: 0, 0, 1	hh/vv(dB)	-99.99	102.22	0.27	32.97	
Pulse: 275ns, IFfilt: 5.0MHz; ppPol: HH HV VV	vh/vh(dB)	-NaN	89.77	-NaN	78.08	-286
TxPol: HHVV, PRF: 20 10 20 10 kHz	hv/hv(dB)	-NaN	-5.83	-39.07	-25.73	2161
Range: Delay 75m, Spacing 30m, Gates 150	hv/vv(dB)	-NaN	-13.17	-39.60	-31.02	721.
Ave. Pulses: 56, Rng/Prof Aspect@90m/s: 8.3	hnjmp(dB)	-3.05	2.75	-0.06	-7.73	17.1
	vnjmp(dB)	-3.43	2.62	-0.04	-7.64	17.4



IHOP 2002 (dual-antenna config, modes 1,3,4,7) Data (cal: 55.0,50.0)

T2002-05-19-16-47-03 - PPMAG4	Min	Max	Mean	Std	Varc%	
IRIG:-2,Count: 00:00:00.0 to 00:41:30.76, Dur: 2490s	hhN(dB)	-67.99	-63.48	-65.40	-74.59	12.1
TimeLngth: 2490.76s, TimeInt: 40ms (25.0pps)	vvN(dB)	-69.04	-64.08	-66.41	-75.47	12.4
TimeCor=0.0s, DSPDif[ms]: mn=40,mx-min=0	hhL(dB)	-31.33	-9.51	-16.46	-17.66	75.9
PPS(min,max,std): 25,26,0.03	vvL(dB)	-30.77	-7.52	-13.51	-14.97	71.4
Prof: 694 to 62964, NumProf(t/r): 62270/37653	ppN(m/s)	-12.66	12.94	0.03	4.17	
ProcTime/Recs: 00:00:00-00:25:06/0-37652	ppT(m/s)	-99.99	102.22	0.27	32.97	
MxAcQtime: 22ms; DRate: 208.3KB/s; Flags: 0, 0, 1	hh/vv(dB)	-NaN	89.77	-NaN	78.08	-286
Pulse: 275ns, IFilt: 5.0MHz; ppPol: HH HV VV	vh/hh(dB)	-NaN	-5.83	-39.07	-25.73	2161
TxPol: HHVV, PRF: 20 10 20 10 kHz	hv/vv(dB)	-NaN	-13.17	-39.60	-31.02	721.
Range: Delay 75m, Spacing 30m, Gates 150	hnjmp(dB)	-3.05	2.75	-0.06	-7.73	17.1
Ave. Pulses: 56, Rng/Prof Aspect@90m/s: 8.3	vnjmp(dB)	-3.43	2.62	-0.04	-7.64	17.4