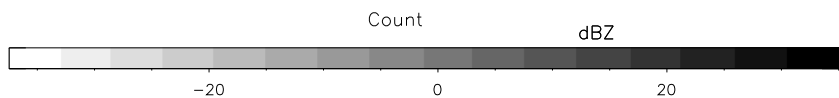
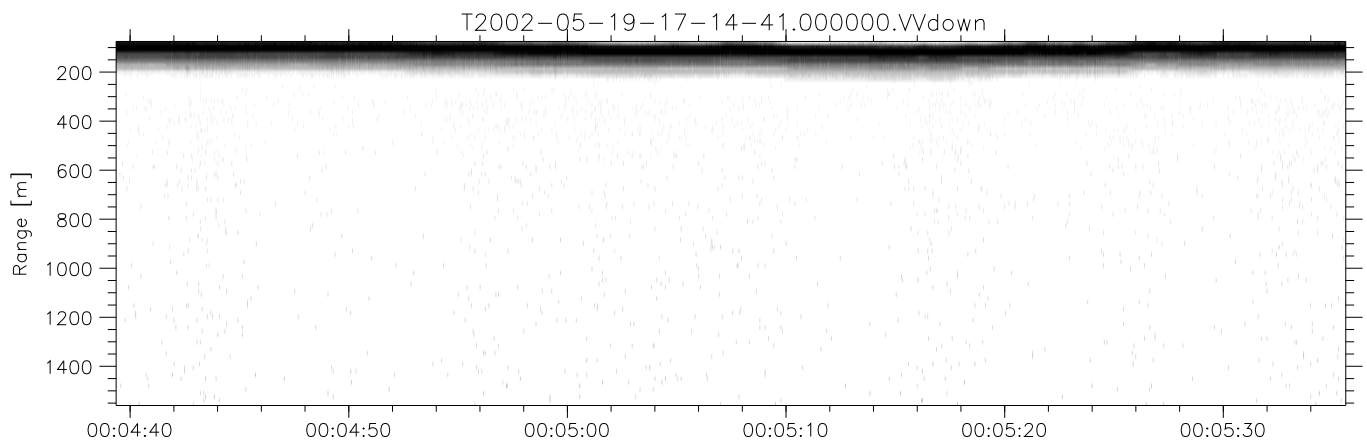
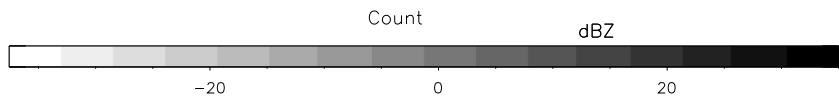
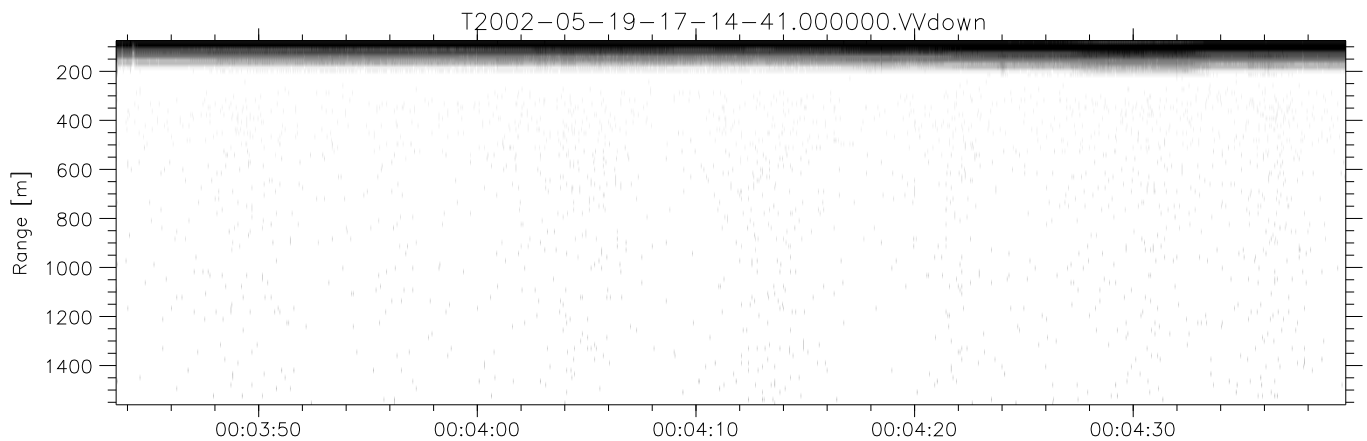
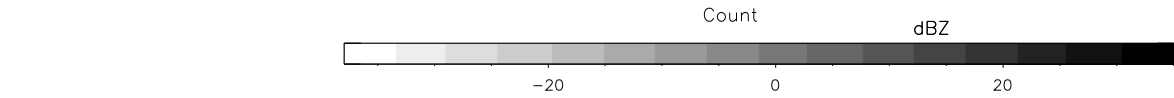
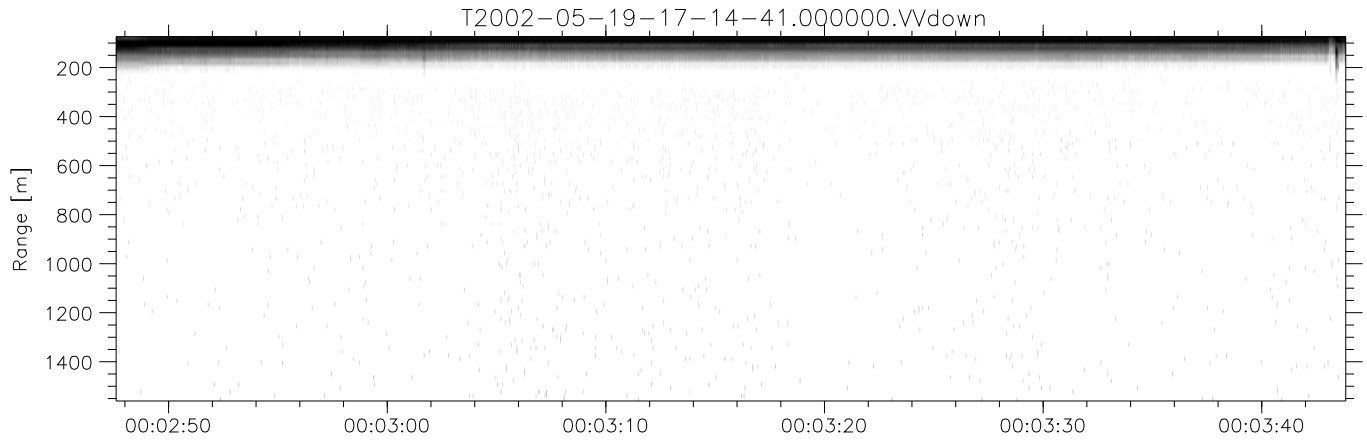


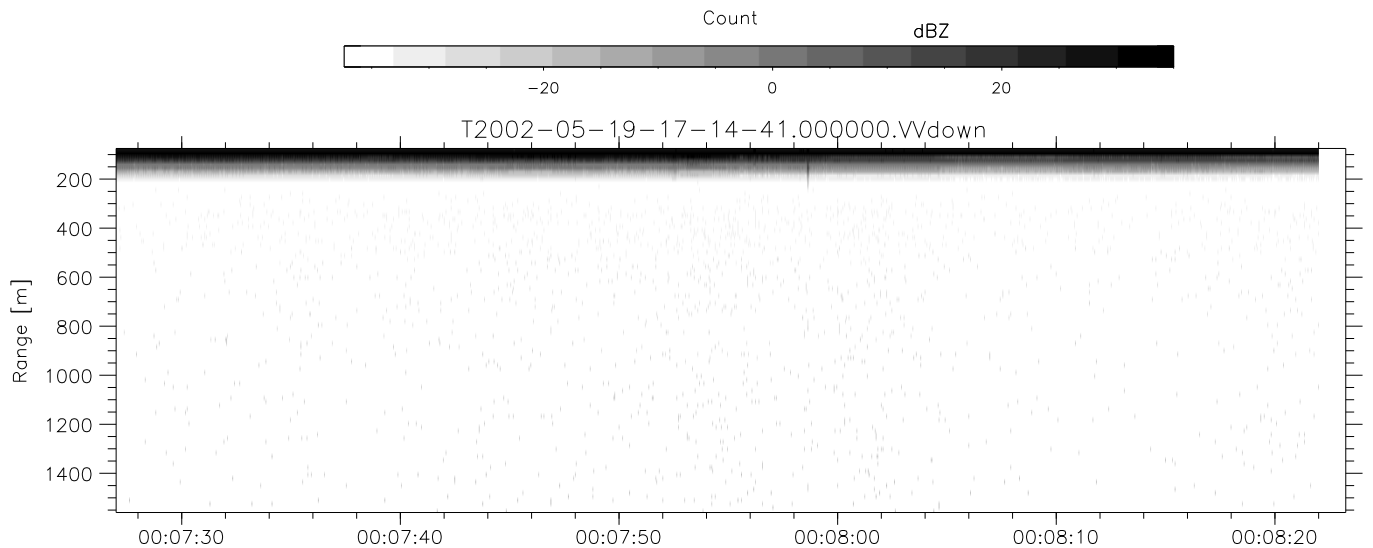
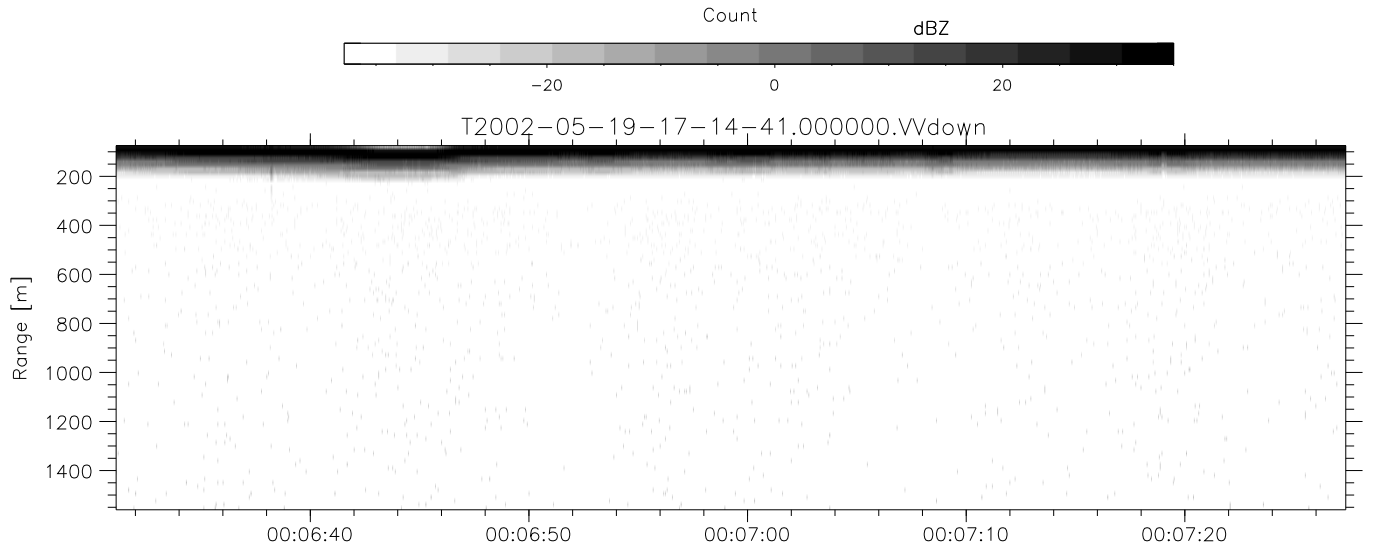
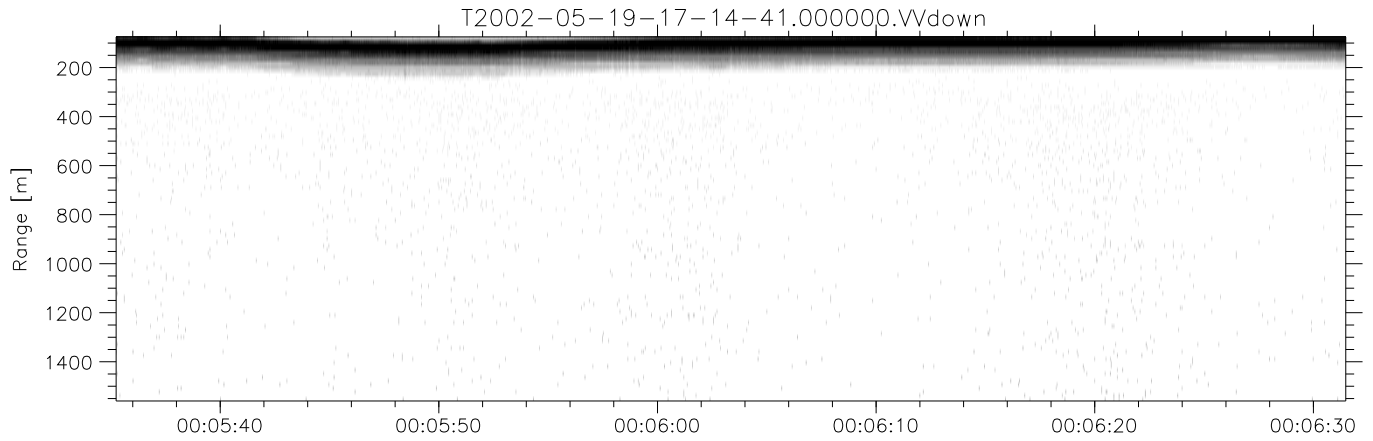
IHOP 2002 (dual-antenna config, modes 1,3,4,7) Data (cal: 49.0,50.0)

T2002-05-19-17-14-41 - PPMAG4	Min	Max	Mean	Std	Varc%	
IRIG:-2,Count: 00:00:00.0 to 02:28:29.64, Dur: 8909s	hhN(dB)	-67.38	-64.23	-65.67	-75.74	9.8
TimeLngth: 8909.64s, TimeInt: 40ms (25.0pps)	vvN(dB)	-68.27	-64.85	-66.29	-76.29	10.0
TimeCor=0.0s, DSPDif[ms]: mn=40,mx-min=0	hhL(dB)	-32.80	-10.56	-16.73	-19.11	57.8
PPS(min,max,std): 25,26,0.04	vvL(dB)	-33.95	-12.86	-18.62	-22.63	39.7
Prof: 192 to 222934, NumProf(t/r): 222742/12551	ppN(m/s)	-12.51	12.74	0.02	4.15	
ProcTime/Recs: 00:00:00-00:08:21/0-12550	ppT(m/s)	-98.86	100.65	0.17	32.80	
MxACQtime: 33ms; DRate: 139.9KB/s; Flags: 0, 0, 1	hh/vv(dB)	-NaN	Inf	Inf	-NaN	-NaN
Pulse: 275ns, IFilt: 5.0MHz; ppPol: HH HV VV	vh/hh(dB)	-NaN	-2.20	-14.99	-9.48	355.
TxPol: HHVV, PRF: 20 10 20 10 kHz	hv/vv(dB)	-NaN	-17.80	-36.12	-35.67	110.
Range: Delay 75m, Spacing 15m, Gates 100	hnjmp(dB)	-2.28	2.25	-0.07	-8.62	14.0
Ave. Pulses: 84, Rng/Prof Aspect@90m/s: 4.2	vnjmp(dB)	-3.09	1.98	-0.08	-8.59	14.1



IHOP 2002 (dual-antenna config, modes 1,3,4,7) Data (cal: 49.0,50.0)

T2002-05-19-17-14-41 - PPMAG4	Min	Max	Mean	Std	Varc%	
IRIG:-2,Count: 00:00:00.0 to 02:28:29.64, Dur: 8909s	hhN(dB)	-67.38	-64.23	-65.67	-75.74	9.8
TimeLngth: 8909.64s, TimeInt: 40ms (25.0pps)	vvN(dB)	-68.27	-64.85	-66.29	-76.29	10.0
TimeCor=0.0s, DSPDif[ms]: mn=40,mx-min=0	hhL(dB)	-32.80	-10.56	-16.73	-19.11	57.8
PPS(min,max,std): 25,26,0.04	vvL(dB)	-33.95	-12.86	-18.62	-22.63	39.7
Prof: 192 to 222934, NumProf(t/r): 222742/12551	ppN(m/s)	-12.51	12.74	0.02	4.15	
ProcTime/Recs: 00:00:00-00:08:21/0-12550	ppT(m/s)	-98.86	100.65	0.17	32.80	
MxAcQtime: 33ms; DRate: 139.9KB/s; Flags: 0, 0, 1	hh/vv(dB)	-NaN	Inf	Inf	-NaN	-NaN
Pulse: 275ns, IFfilt: 5.0MHz; ppPol: HH HV VV	vh/hh(dB)	-NaN	-2.20	-14.99	-9.48	355.
TxPol: HHVV, PRF: 20 10 20 10 kHz	hv/vv(dB)	-NaN	-17.80	-36.12	-35.67	110.
Range: Delay 75m, Spacing 15m, Gates 100	hn/jmp(dB)	-2.28	2.25	-0.07	-8.62	14.0
Ave. Pulses: 84, Rng/Prof Aspect@90m/s: 4.2	vn/jmp(dB)	-3.09	1.98	-0.08	-8.59	14.1



IHOP 2002 (dual-antenna config, modes 1,3,4,7) Data (cal: 49.0,50.0)

T2002-05-19-17-14-41 - PPMAG4	Min	Max	Mean	Std	Varc%	
IRIG:-2,Count: 00:00:00.0 to 02:28:29.64, Dur: 8909s	hhN(dB)	-67.38	-64.23	-65.67	-75.74	9.8
TimeLngth: 8909.64s, TimeInt: 40ms (25.0pps)	vvN(dB)	-68.27	-64.85	-66.29	-76.29	10.0
TimeCor=0.0s, DSPDif[ms]: mn=40,mx=-min=0	hhL(dB)	-32.80	-10.56	-16.73	-19.11	57.8
PPS(min,max,std): 25,26,0.04	vvL(dB)	-33.95	-12.86	-18.62	-22.63	39.7
Prof: 192 to 222934, NumProf(t/r): 222742/12551	ppN(m/s)	-12.51	12.74	0.02	4.15	
ProcTime/Recs: 00:00:00-00:08:21/0-12550	ppT(m/s)	-98.86	100.65	0.17	32.80	
MxACQtime: 33ms; DRate: 139.9KB/s; Flags: 0, 0, 1	hh/vv(dB)	-NaN	Inf	Inf	-NaN	-NaN
Pulse: 275ns, IFilt: 5.0MHz; ppPol: HH HV VV	vh/hh(dB)	-NaN	-2.20	-14.99	-9.48	355.
TxPol: HHVV, PRF: 20 10 20 10 kHz	hv/vv(dB)	-NaN	-17.80	-36.12	-35.67	110.
Range: Delay 75m, Spacing 15m, Gates 100	hnjmp(dB)	-2.28	2.25	-0.07	-8.62	14.0
Ave. Pulses: 84, Rng/Prof Aspect@90m/s: 4.2	vnjmp(dB)	-3.09	1.98	-0.08	-8.59	14.1