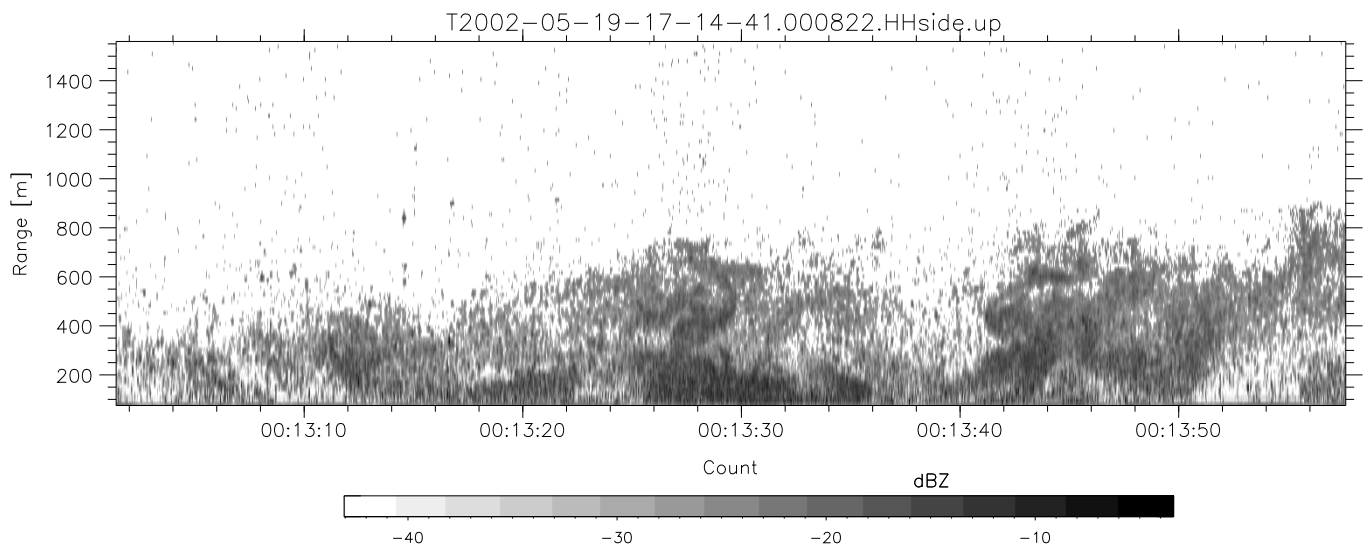
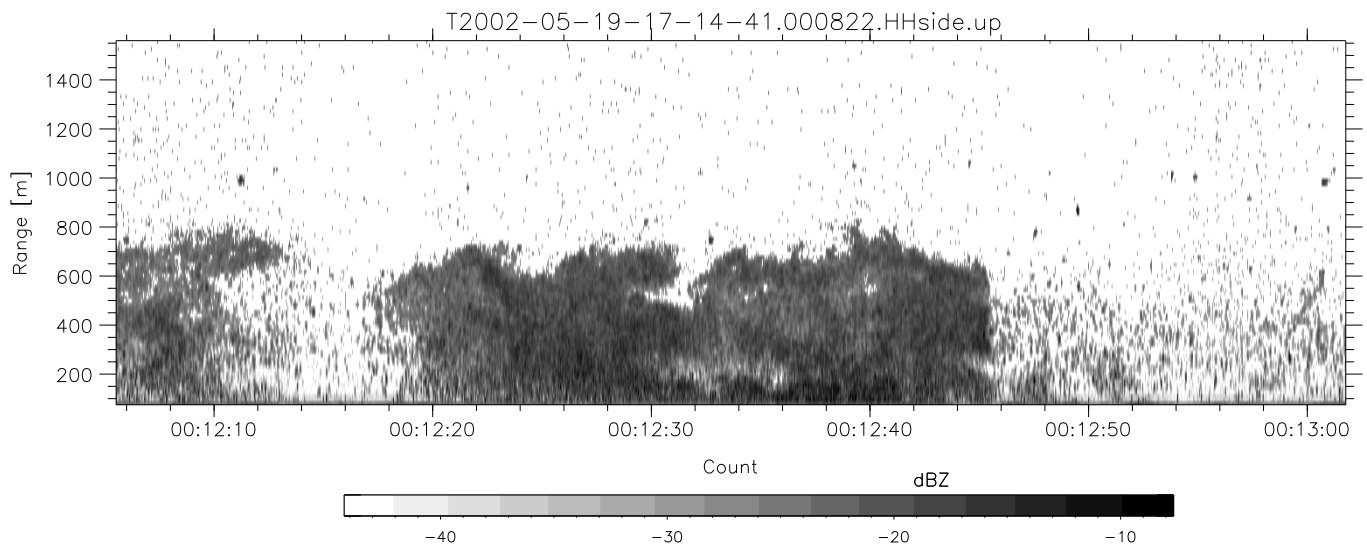
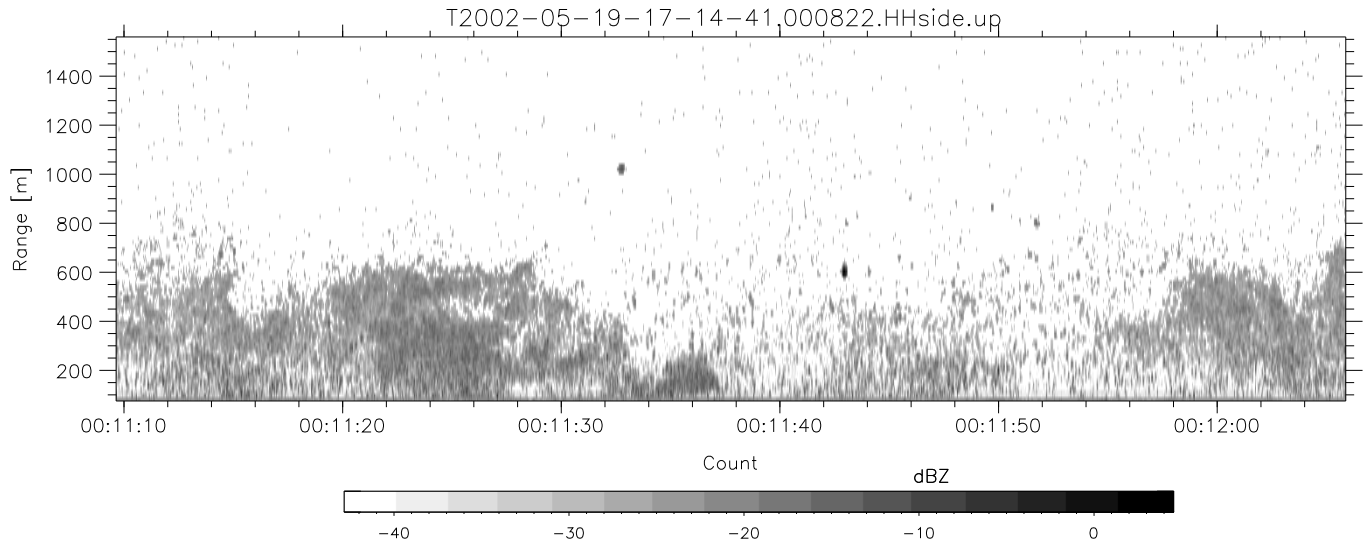


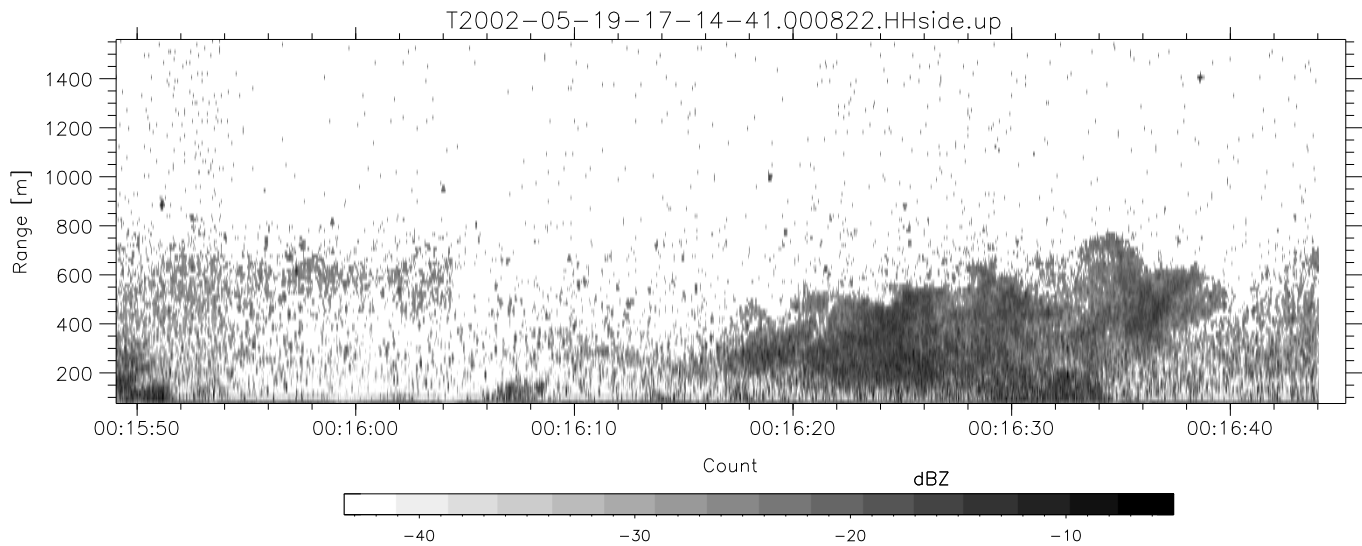
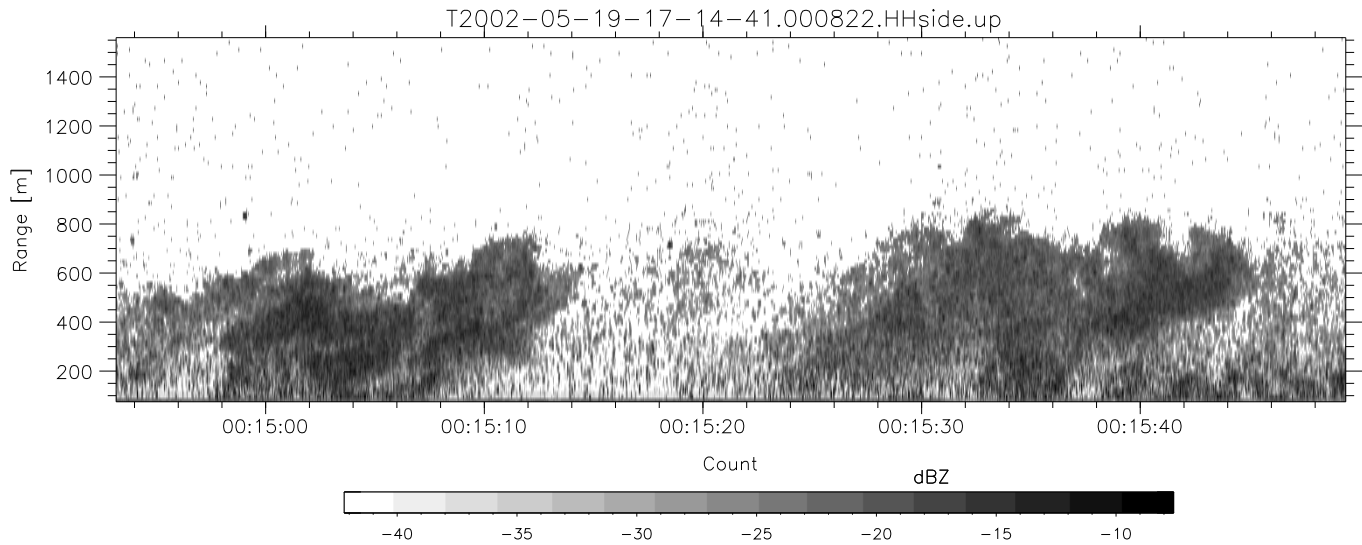
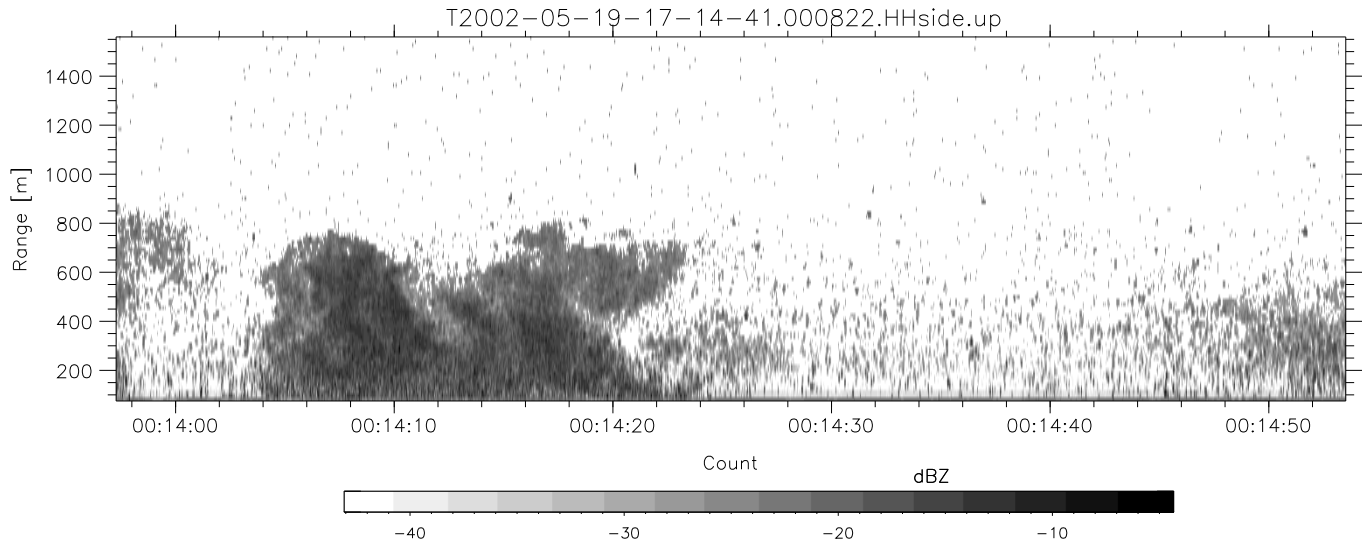
IHOP 2002 (dual-antenna config, modes 1,3,4,7) Data (cal: 49.0,50.0)

T2002-05-19-17-14-41 - PPMAG4	Min	Max	Mean	Std	Varc%	
IRIG:-2,Count: 00:00:00.0 to 02:28:29.64, Dur: 8909s	hhN (dB)	-67.50	-64.14	-65.70	-75.77	9.8
TimeLngth: 8909.64s, TimeInt: 40ms (25.0pps)	vvN (dB)	-68.09	-64.73	-66.32	-76.35	9.9
TimeCor=0.0s, DSPDif[ms]: mn=40,mx-min=0	hhL (dB)	-28.81	-10.74	-16.56	-20.35	41.8
PPS(min,max,std): 25,25,0.00	vvL (dB)	-27.95	-13.10	-19.26	-23.43	38.3
Prof: 192 to 222934, NumProf(t/r): 222742/12551	ppN (m/s)	-12.51	12.81	0.01	4.17	
ProcTime/Recs: 00:08:22-00:16:44/12551-25101	ppT (m/s)	-98.85	101.17	0.04	32.96	
MxACQtime: 33ms; DRate: 139.9KB/s; Flags: 0, 0, 1	hh/vv (dB)	-NaN	57.28	14.82	39.79	3142
Pulse: 275ns, IFilt: 5.0MHz; ppPol: HH HV VV	vh/hh (dB)	-NaN	-2.62	-13.52	-9.74	239.
TxPol: HHVV, PRF: 20 10 20 10 kHz	hv/vv (dB)	-NaN	-11.62	-32.11	-27.72	275.
Range: Delay 75m, Spacing 15m, Gates 100	hn/jmp (dB)	-2.08	2.29	0.14	-8.41	13.9
Ave. Pulses: 84, Rng/Prof Aspect@90m/s: 4.2	vn/jmp (dB)	-1.82	2.53	0.17	-8.42	13.8



IHOP 2002 (dual-antenna config, modes 1,3,4,7) Data (cal: 49.0,50.0)

T2002-05-19-17-14-41 - PPMAG4	Min	Max	Mean	Std	Varc%	
IRIG:-2,Count: 00:00:00.0 to 02:28:29.64, Dur: 8909s	hhN (dB)	-67.50	-64.14	-65.70	-75.77	9.8
TimeLngth: 8909.64s, TimeInt: 40ms (25.0pps)	vvN (dB)	-68.09	-64.73	-66.32	-76.35	9.9
TimeCor=0.0s, DSPDif[ms]: mn=40,mx-min=0	hhL (dB)	-28.81	-10.74	-16.56	-20.35	41.8
PPS(min,max,std): 25,25,0.00	vvL (dB)	-27.95	-13.10	-19.26	-23.43	38.3
Prof: 192 to 222934, NumProf(t/r): 222742/12551	ppN (m/s)	-12.51	12.81	0.01	4.17	
ProcTime/Recs: 00:08:22-00:16:44/12551-25101	ppT (m/s)	-98.85	101.17	0.04	32.96	
MxAcQtime: 33ms; DRate: 139.9KB/s; Flags: 0, 0, 1	hh/vv (dB)	-NaN	57.28	14.82	39.79	3142
Pulse: 275ns, IFilt: 5.0MHz; ppPol: HH HV VV	vh/hh (dB)	-NaN	-2.62	-13.52	-9.74	239.
TxPol: HHVV, PRF: 20 10 20 10 kHz	hv/vv (dB)	-NaN	-11.62	-32.11	-27.72	275.
Range: Delay 75m, Spacing 15m, Gates 100	hnjmp (dB)	-2.08	2.29	0.14	-8.41	13.9
Ave. Pulses: 84, Rng/Prof Aspect@90m/s: 4.2	vnjmp (dB)	-1.82	2.53	0.17	-8.42	13.8



IHOP 2002 (dual-antenna config, modes 1,3,4,7) Data (cal: 49.0,50.0)

T2002-05-19-17-14-41 - PPMAG4	Min	Max	Mean	Std	Varc%	
IRIG:-2,Count: 00:00:00.0 to 02:28:29.64, Dur: 8909s	hhN (dB)	-67.50	-64.14	-65.70	-75.77	9.8
TimeLngth: 8909.64s, TimeInt: 40ms (25.0pps)	vvN (dB)	-68.09	-64.73	-66.32	-76.35	9.9
TimeCor=0.0s, DSPDif[ms]: mn=40,mx-min=0	hhL (dB)	-28.81	-10.74	-16.56	-20.35	41.8
PPS(min,max,std): 25,25,0.00	vvL (dB)	-27.95	-13.10	-19.26	-23.43	38.3
Prof: 192 to 222934, NumProf(t/r): 222742/12551	ppN (m/s)	-12.51	12.81	0.01	4.17	
ProcTime/Recs: 00:08:22-00:16:44/12551-25101	ppT (m/s)	-98.85	101.17	0.04	32.96	
MxACQtime: 33ms; DRate: 139.9KB/s; Flags: 0, 0, 1	hh/vv (dB)	-NaN	57.28	14.82	39.79	3142
Pulse: 275ns, IFfilt: 5.0MHz; ppPol: HH HV VV	vh/hh (dB)	-NaN	-2.62	-13.52	-9.74	239.
TxPol: HHVV, PRF: 20 10 20 10 kHz	hv/vv (dB)	-NaN	-11.62	-32.11	-27.72	275.
Range: Delay 75m, Spacing 15m, Gates 100	hnjmp (dB)	-2.08	2.29	0.14	-8.41	13.9
Ave. Pulses: 84, Rng/Prof Aspect@90m/s: 4.2	vnjmp (dB)	-1.82	2.53	0.17	-8.42	13.8