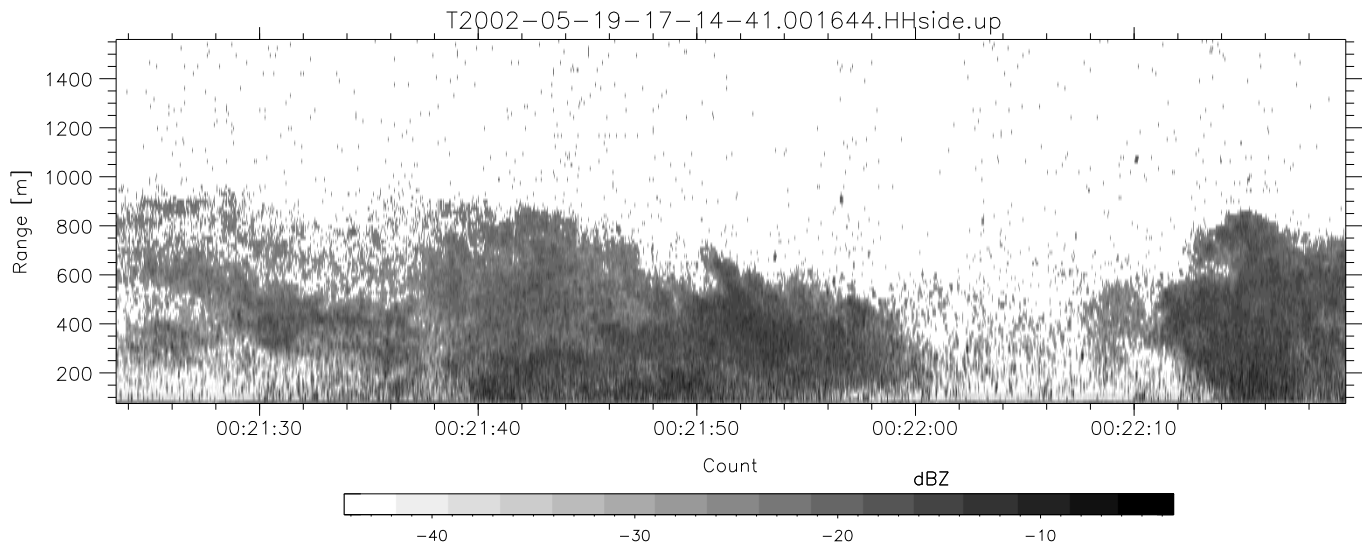
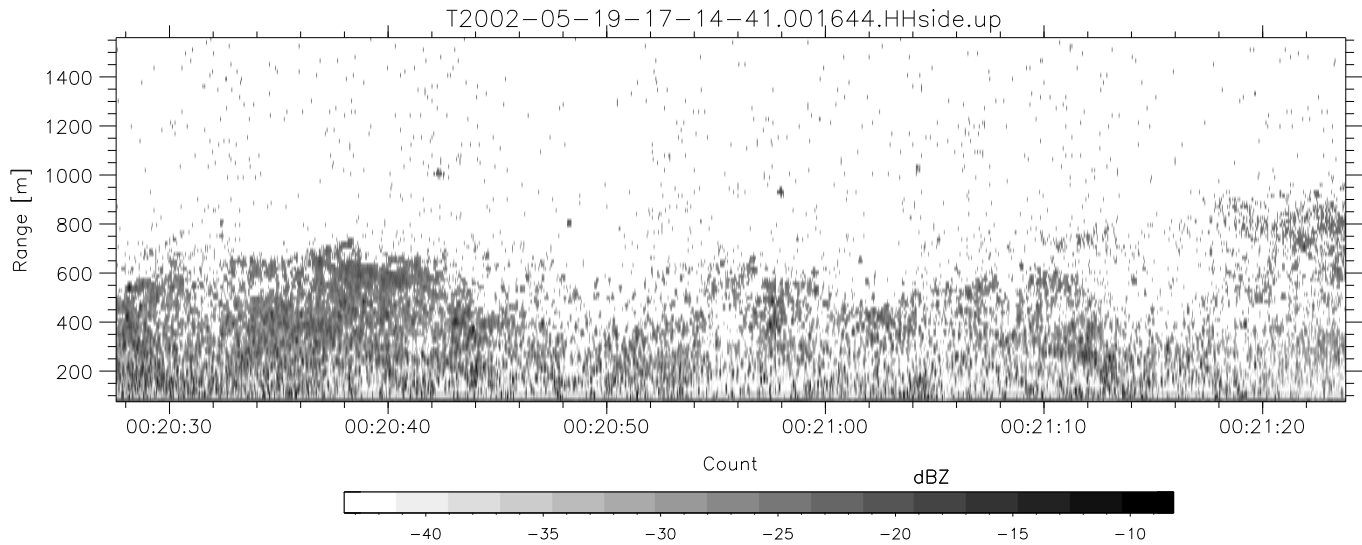
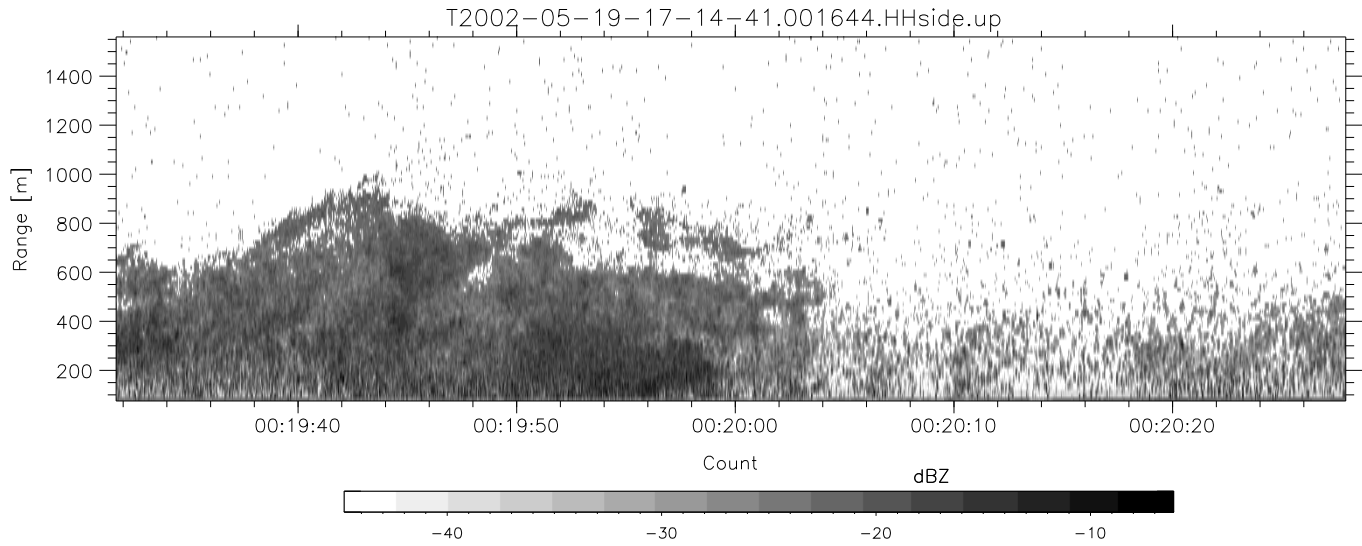


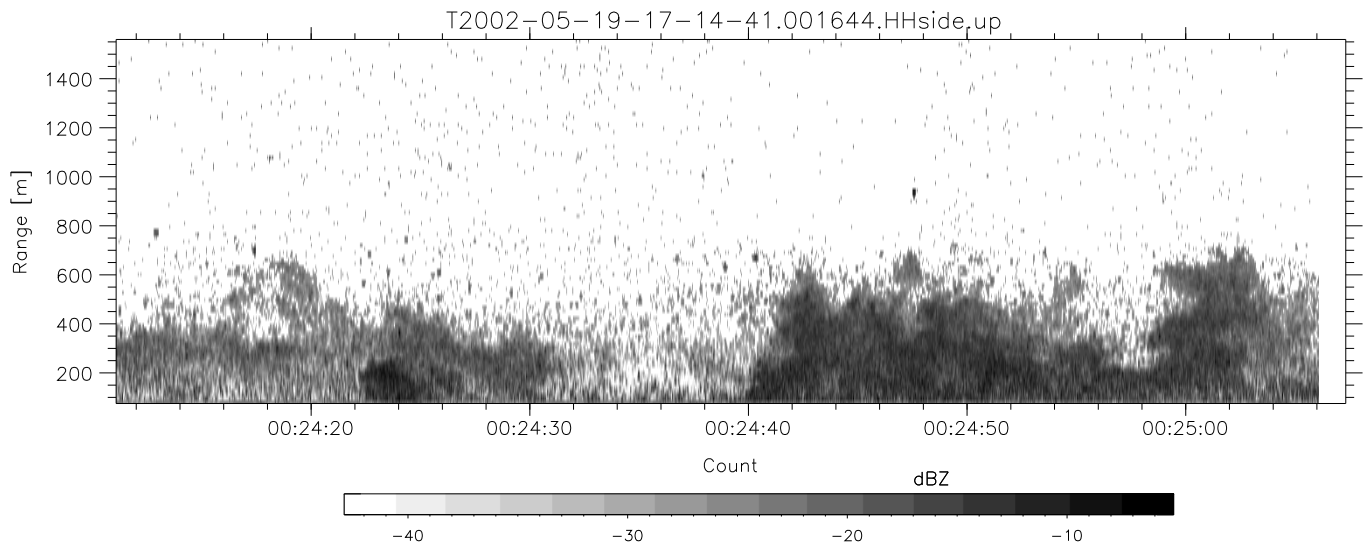
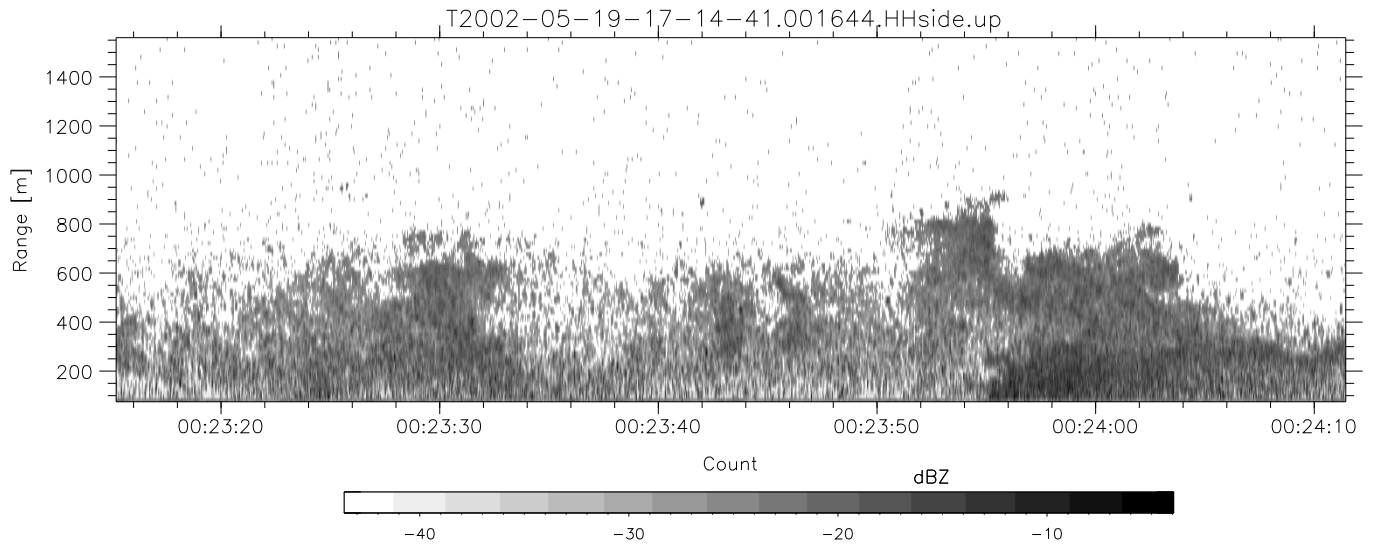
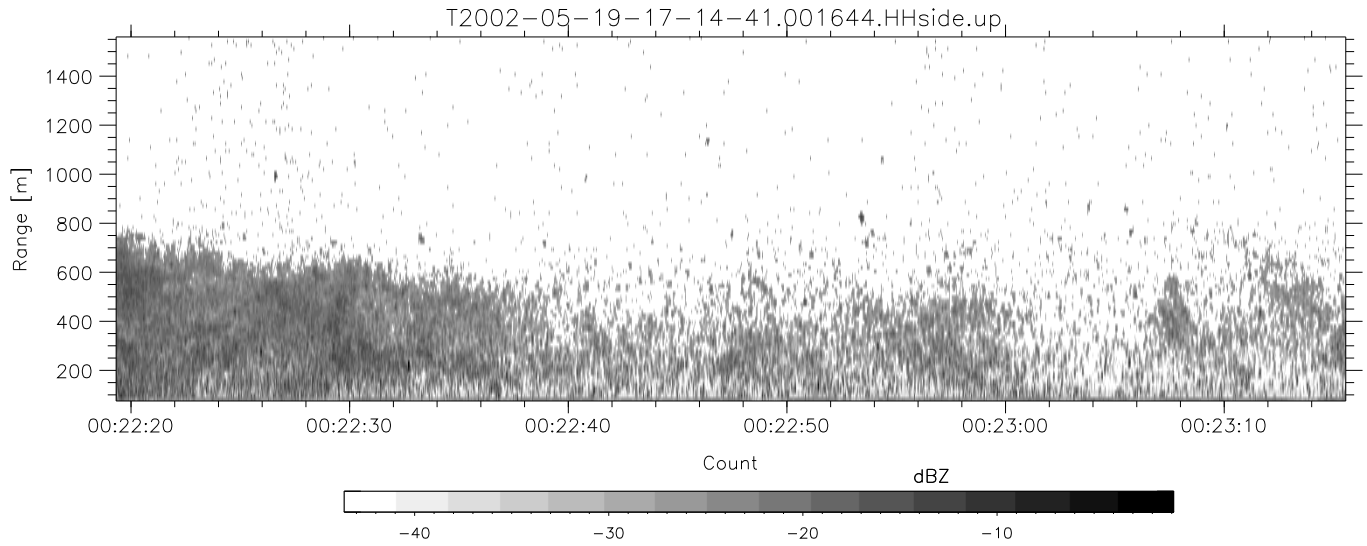
IHOP 2002 (dual-antenna config, modes 1,3,4,7) Data (cal: 49.0,50.0)

T2002-05-19-17-14-41 - PPMAG4	Min	Max	Mean	Std	Varc%	
IRIG:-2,Count: 00:00:00.0 to 02:28:29.64, Dur: 8909s	hhN (dB)	-67.80	-64.28	-65.77	-75.85	9.8
TimeLngth: 8909.64s, TimeInt: 40ms (25.0pps)	vvN (dB)	-68.03	-64.86	-66.36	-76.40	9.9
TimeCor=0.0s, DSPDif[ms]: mn=40,mx-min=0	hhL (dB)	-31.38	-12.01	-17.95	-20.98	49.8
PPS(min,max,std): 25,25,0.00	vvL (dB)	-33.39	-14.62	-20.86	-24.42	44.0
Prof: 192 to 222934, NumProf(t/r): 222742/12551	ppN (m/s)	-12.61	12.42	-0.00	4.16	
ProcTime/Recs: 00:16:44-00:25:06/25102-37652	ppT (m/s)	-99.64	98.13	-0.02	32.84	
MxACQtime: 33ms; DRate: 139.9KB/s; Flags: 0, 0, 1	hh/vv (dB)	-NaN	58.53	17.68	39.18	1413
Pulse: 275ns, IFilt: 5.0MHz; ppPol: HH HV VV	vh/hh (dB)	-NaN	-2.80	-14.60	-10.27	271.
TxPol: HHVV, PRF: 20 10 20 10 kHz	hv/vv (dB)	-NaN	-18.22	-35.45	-33.45	158.
Range: Delay 75m, Spacing 15m, Gates 100	hnjmp (dB)	-2.32	1.97	-0.08	-8.71	13.7
Ave. Pulses: 84, Rng/Prof Aspect@90m/s: 4.2	vnjmp (dB)	-2.15	1.95	-0.07	-8.59	14.1



IHOP 2002 (dual-antenna config, modes 1,3,4,7) Data (cal: 49.0,50.0)

	Min	Max	Mean	Std	Varc%	
T2002-05-19-17-14-41 - PPMAG4						
IRIG:-2,Count: 00:00:00.0 to 02:28:29.64, Dur: 8909s	hhN (dB)	-67.80	-64.28	-65.77	-75.85	9.8
TimeLngth: 8909.64s, TimeInt: 40ms (25.0pps)	vvN (dB)	-68.03	-64.86	-66.36	-76.40	9.9
TimeCor=0.0s, DSPDif[ms]: mn=40,mx-min=0	hhL (dB)	-31.38	-12.01	-17.95	-20.98	49.8
PPS(min,max,std): 25,25,0.00	vvL (dB)	-33.39	-14.62	-20.86	-24.42	44.0
Prof: 192 to 222934, NumProf(t/r): 222742/12551	ppN (m/s)	-12.61	12.42	-0.00	4.16	
ProcTime/Recs: 00:16:44-00:25:06/25102-37652	ppT (m/s)	-99.64	98.13	-0.02	32.84	
MxAcQtime: 33ms; DRate: 139.9KB/s; Flags: 0, 0, 1	hh/vv (dB)	-NaN	58.53	17.68	39.18	1413
Pulse: 275ns, IFilt: 5.0MHz; ppPol: HH HV VV	vh/hh (dB)	-NaN	-2.80	-14.60	-10.27	271.
TxPol: HHVV, PRF: 20 10 20 10 kHz	hv/vv (dB)	-NaN	-18.22	-35.45	-33.45	158.
Range: Delay 75m, Spacing 15m, Gates 100	hn_jmp (dB)	-2.32	1.97	-0.08	-8.71	13.7
Ave. Pulses: 84, Rng/Prof Aspect@90m/s: 4.2	vn_jmp (dB)	-2.15	1.95	-0.07	-8.59	14.1



IHOP 2002 (dual-antenna config, modes 1,3,4,7) Data (cal: 49.0,50.0)

	Min	Max	Mean	Std	Varc%	
T2002-05-19-17-14-41 - PPMAG4						
IRIG:-2,Count: 00:00:00.0 to 02:28:29.64, Dur: 8909s	hhN (dB)	-67.80	-64.28	-65.77	-75.85	9.8
TimeLngth: 8909.64s, TimeInt: 40ms (25.0pps)	vvN (dB)	-68.03	-64.86	-66.36	-76.40	9.9
TimeCor=0.0s, DSPDif[ms]: mn=40,mx-min=0	hhL (dB)	-31.38	-12.01	-17.95	-20.98	49.8
PPS(min,max,std): 25,25,0.00	vvL (dB)	-33.39	-14.62	-20.86	-24.42	44.0
Prof: 192 to 222934, NumProf(t/r): 222742/12551	ppN (m/s)	-12.61	12.42	-0.00	4.16	
ProcTime/Recs: 00:16:44-00:25:06/25102-37652	ppT (m/s)	-99.64	98.13	-0.02	32.84	
MxAcQtime: 33ms; DRate: 139.9KB/s; Flags: 0, 0, 1	hh/vv (dB)	-NaN	58.53	17.68	39.18	1413
Pulse: 275ns, IFfilt: 5.0MHz; ppPol: HH HV VV	vh/hh (dB)	-NaN	-2.80	-14.60	-10.27	271.
TxPol: HHVV, PRF: 20 10 20 10 kHz	hv/vv (dB)	-NaN	-18.22	-35.45	-33.45	158.
Range: Delay 75m, Spacing 15m, Gates 100	hn/jmp (dB)	-2.32	1.97	-0.08	-8.71	13.7
Ave. Pulses: 84, Rng/Prof Aspect@90m/s: 4.2	vn/jmp (dB)	-2.15	1.95	-0.07	-8.59	14.1