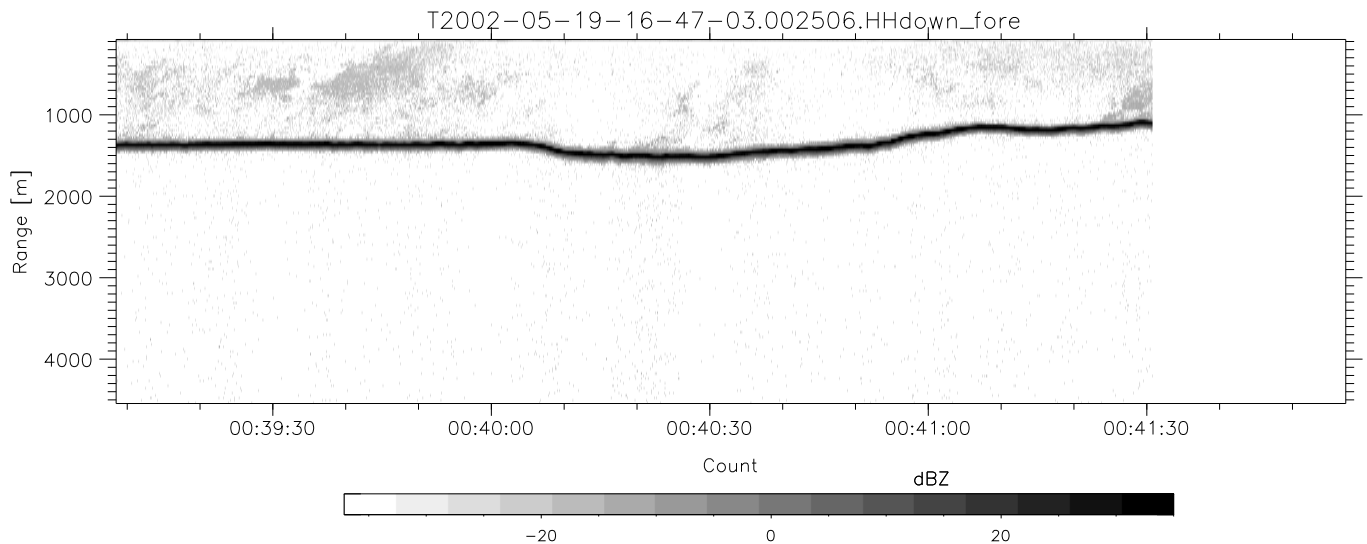
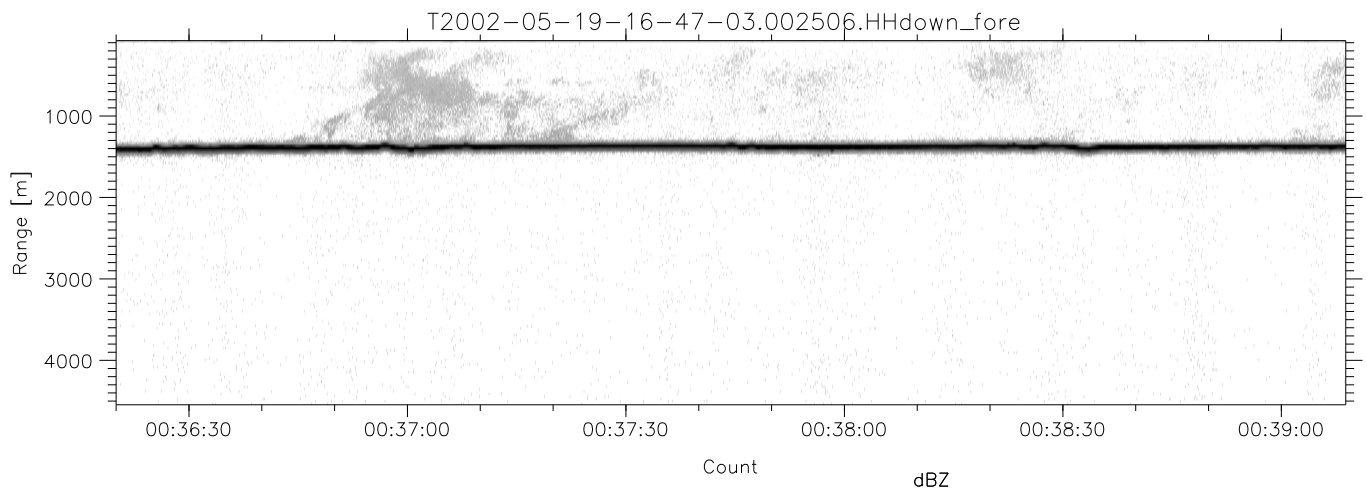
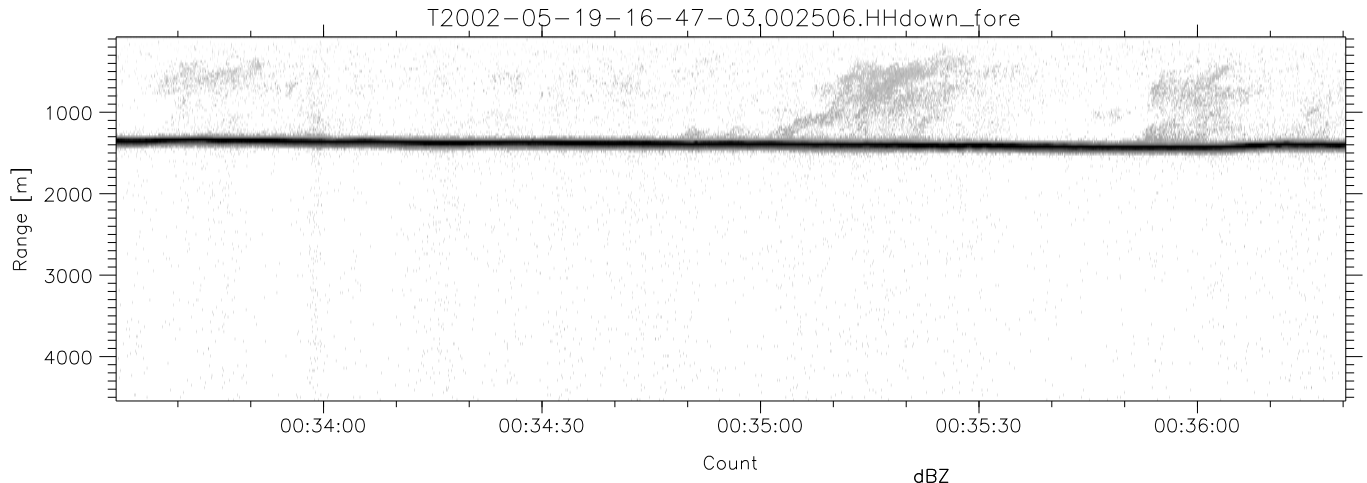


IHOP 2002 (dual-antenna config, modes 1,3,4,7) Data (cal: 55.0,50.0)

T2002-05-19-16-47-03 - PPMAG4	Min	Max	Mean	Std	Varc%	
IRIG:-2,Count: 00:00:00.0 to 00:41:30.76, Dur: 2490s	hhN (dB)	-67.70	-63.34	-65.34	-74.53	12.1
TimeLngth: 2490.76s, TimeInt: 40ms (25.0pps)	vvN (dB)	-68.44	-64.36	-66.31	-75.44	12.2
TimeCor=0.0s, DSPDif[ms]: mn=40,mx-min=0	hhL (dB)	-33.84	-9.44	-19.60	-20.42	82.9
PPS(min,max,std): 25,25,0.00	vvL (dB)	-31.37	-14.05	-16.32	-22.90	22.0
Prof: 694 to 62964, NumProf(t/r): 62270/24617	ppN (m/s)	-12.57	12.61	0.01	4.14	
ProcTime/Recs: 00:25:06-00:41:30/37653-62269	ppT (m/s)	-99.29	99.59	0.06	32.73	
MxAcQtime: 22ms; DRate: 208.3KB/s; Flags: 0, 0, 1	hh/vv (dB)	-NaN	98.21	53.34	76.07	1876
Pulse: 275ns, IFilt: 5.0MHz; ppPol: HH HV VV	vh/hh (dB)	-NaN	-29.30	-49.12	-40.61	709.
TxPol: HHVV, PRF: 20 10 20 10 kHz	hv/vv (dB)	-NaN	-32.91	-49.99	-44.14	384.
Range: Delay 75m, Spacing 30m, Gates 150	hn/jmp (dB)	-2.89	2.94	0.17	-7.50	17.1
Ave. Pulses: 56, Rng/Prof Aspect@90m/s: 8.3	vn/jmp (dB)	-2.95	3.11	0.18	-7.40	17.5



IHOP 2002 (dual-antenna config, modes 1,3,4,7) Data (cal: 55.0,50.0)

T2002-05-19-16-47-03 - PPMAG4						
IRIG:-2,Count: 00:00:00.0 to 00:41:30.76, Dur: 2490s	hhN (dB)	Min	Max	Mean	Std	Varc%
TimeLngth: 2490.76s, TimeInt: 40ms (25.0pps)	vvN (dB)	-67.70	-63.34	-65.34	-74.53	12.1
TimeCor=0.0s, DSPDif[ms]: mn=40,mx-min=0	hhL (dB)	-68.44	-64.36	-66.31	-75.44	12.2
PPS(min,max,std): 25,25,0.00	vvL (dB)	-33.84	-9.44	-19.60	-20.42	82.9
Prof: 694 to 62964, NumProf(t/r): 62270/24617	ppN (m/s)	-31.37	-14.05	-16.32	-22.90	22.0
ProcTime/Recs: 00:25:06-00:41:30/37653-62269	ppT (m/s)	-12.57	12.61	0.01	4.14	
MxAcQtime: 22ms; DRate: 208.3KB/s; Flags: 0, 0, 1	hh/vv (dB)	-99.29	99.59	0.06	32.73	
Pulse: 275ns, IFilt: 5.0MHz; ppPol: HH HV VV	vh/vh (dB)	-NaN	98.21	53.34	76.07	1876
TxPol: HHVV, PRF: 20 10 20 10 kHz	hv/hv (dB)	-NaN	-29.30	-49.12	-40.61	709.
Range: Delay 75m, Spacing 30m, Gates 150	hv/vv (dB)	-NaN	-32.91	-49.99	-44.14	384.
Ave. Pulses: 56, Rng/Prof Aspect@90m/s: 8.3	hn/jmp (dB)	-2.89	2.94	0.17	-7.50	17.1
	vn/jmp (dB)	-2.95	3.11	0.18	-7.40	17.5